

NBER WORKING PAPER SERIES

UNEMPLOYMENT INSURANCE IN MACROECONOMIC STABILIZATION

Rohan Kekre

Working Paper 29505

<http://www.nber.org/papers/w29505>

NATIONAL BUREAU OF ECONOMIC RESEARCH

1050 Massachusetts Avenue

Cambridge, MA 02138

November 2021, Revised August 2022

I thank the editor Dirk Krueger and four anonymous referees. This paper is a substantial revision of the first chapter of my PhD dissertation at Harvard University. I am indebted to Emmanuel Farhi, Gita Gopinath, Raj Chetty, and Gabriel Chodorow-Reich for their guidance. I thank Peter Ganong, Veronica Guerrieri, Erik Hurst, Greg Kaplan, and Joseph Vavra for numerous discussions, and Robin Li for excellent research assistance. The views expressed herein are those of the author and do not necessarily reflect the views of the National Bureau of Economic Research.

NBER working papers are circulated for discussion and comment purposes. They have not been peer-reviewed or been subject to the review by the NBER Board of Directors that accompanies official NBER publications.

© 2021 by Rohan Kekre. All rights reserved. Short sections of text, not to exceed two paragraphs, may be quoted without explicit permission provided that full credit, including © notice, is given to the source.

Unemployment Insurance in Macroeconomic Stabilization
Rohan Kekre
NBER Working Paper No. 29505
November 2021, Revised August 2022
JEL No. D52,E21,E62,J64,J65

ABSTRACT

I study unemployment insurance (UI) in general equilibrium with incomplete markets, search frictions, and nominal rigidities. An increase in generosity raises the aggregate demand for consumption if the unemployed have a higher marginal propensity to consume (MPC) than the employed or if agents precautionary save in light of future income risk. This raises output and employment unless monetary policy raises the nominal interest rate. In an analysis of the U.S. economy over 2008-2014, UI benefit extensions had a contemporaneous output multiplier around 1. The unemployment rate would have been as much as 0.4pp higher absent these extensions.

Rohan Kekre
Booth School of Business
University of Chicago
5807 S. Woodlawn Avenue
Chicago, IL 60637
and NBER
rohan.kekre@chicagobooth.edu

An appendix is available at <http://www.nber.org/data-appendix/w29505>

1 Introduction

Economists have long viewed unemployment insurance (UI) as an important automatic stabilizer — but should it also serve as a discretionary tool in the stabilization of short-run fluctuations? Since the 1950s, policymakers in the United States have treated UI generosity as precisely such an instrument, extending benefits in recessions. This practice was expanded in unprecedented and controversial fashion during the Great Recession, when benefit durations were raised almost four-fold at the depth of the downturn. While critics emphasized the costly supply-side effects of more generous UI, supporters pointed to potential stimulus benefits of transfers to the unemployed.¹ More recently, a similar debate has unfolded with respect to UI benefit increases during the Covid-19 pandemic.

The existing analysis of UI in the literature cannot speak fully to these debates because it has largely ignored these potential interactions between UI and aggregate demand. Most prior work has studied UI in partial equilibrium, while analyses in general equilibrium have focused on environments in steady-state or in the real business cycle tradition. This paper studies the output and employment effects of UI in a general equilibrium framework with macroeconomic shocks and nominal rigidities.

I demonstrate that the effect of UI on aggregate demand makes it expansionary when monetary policy is constrained. An increase in UI generosity raises aggregate demand if the unemployed have a higher marginal propensity to consume (MPC) than the employed or if agents precautionary save in light of future income risk. If monetary policy does not respond to the demand stimulus by raising the nominal interest rate, this raises equilibrium output and employment. Calibrating the model to the U.S. economy during the Great Recession implies an important stabilization role of UI through these channels. With monetary policy and unemployment matching the data over 2008-2014, the observed extensions in UI duration had a contemporaneous output multiplier around 1. The unemployment rate would have been as much as 0.4pp higher absent these extensions.

Several real and nominal frictions interact to set the stage for the paper’s results. First, search and matching frictions in the tradition of Diamond [1981], Mortensen [1982], and Pissarides [1984] give rise to unemployment and disincentive effects of UI. Second, market incompleteness with respect to unemployment risk, building on Bewley [1983], Huggett [1993], and Aiyagari [1994], generates a consumption insurance role for publicly provided UI. Third, nominal rigidities render the level of production partially demand-determined.

In such an environment, I first analytically demonstrate how nominal rigidities and ac-

¹See Summers [2010], Congressional Budget Office [2012], and Blanchard et al. [2013] for examples of commentary emphasizing the potential stimulus from UI.

commodative monetary policy reverse the conventional effects of UI on macroeconomic aggregates. A budget-balanced increase in UI raises the aggregate demand for consumption in the same period if the unemployed have a higher MPC than the employed. Expectations of more generous future UI raise aggregate demand by reducing agents' incentive to precautionary save. Absent nominal rigidity, these impulses are undone by a rise in the equilibrium real interest rate, and the effects of UI on wages and search intensity drive a reduction in equilibrium output and employment. The same results obtain with nominal rigidity but monetary policy which replicates the aforementioned path of real interest rates. In contrast, with nominal rigidity but monetary policy which maintains a constant real interest rate, the stimulus to aggregate demand drives an increase in equilibrium output and employment. These results are only amplified when monetary policy implements a constant nominal rather than real interest rate — as at the zero lower bound — in which case the supply-side effects of UI raise inflation expectations, lower real interest rates, and thus further stimulate demand.

I then study these mechanisms in a richer model calibrated to the U.S. economy. Because the model is consistent with evidence on consumption sensitivities to income by employment status, the incidence and effects of unemployment, and the cross-sectional distribution of consumption, we can have confidence in its predictions regarding MPC heterogeneity and precautionary saving. Because it is consistent with evidence on the disincentive effects of UI and degree of price rigidity, and because it can flexibly accommodate real wage rigidity as in much of the literature, we can have confidence in its supply-side predictions.

I first quantitatively characterize the roles of nominal rigidity and accommodative monetary policy in rendering UI extensions expansionary around the model's steady-state. Absent nominal rigidity, extending UI benefit duration by three months for one year has a contemporaneous output multiplier of -0.5: while the increase in generosity would raise short-run consumption in partial equilibrium, the real interest rate rises so that output falls in general equilibrium. With nominal rigidity but assuming that monetary policy follows a conventional Taylor rule, the output multiplier becomes 0.6 as the nominal and thus real rate rises in response, but not as much as under flexible prices. If monetary policy maintains a fixed nominal interest rate during the period of benefit extensions and follows a Taylor rule thereafter, the output multiplier nearly doubles to 1.1.

Quantitatively, MPC heterogeneity and diminished precautionary saving drive the stimulus from UI when monetary policy is constrained. Absent cross-sectional heterogeneity in the incidence of unemployment which contributes to MPC heterogeneity, the output multiplier is substantially diminished. Conversely, if UI is expected to be extended over a greater horizon, the multiplier substantially rises due to the feedback loop between lower precautionary saving and higher job-finding rates. While a greater search or wage response to UI only

amplifies the stimulus at a constant nominal interest rate by raising inflation expectations, the direct effects of UI on aggregate demand via heterogeneity in MPCs and diminished precautionary saving account for a majority of the baseline equilibrium effects.

I then study the role of UI benefit extensions during the Great Recession. I first isolate 13 distinct shocks to UI policy during this period. Twelve of these correspond to distinct pieces of legislation introducing or reauthorizing benefits under the Emergency Unemployment Compensation Act of 2008 (EUC08). One of these corresponds to the initiation of benefits under the Extended Benefits (EB) program for the median U.S. state. Given these shocks to UI policy, I then calibrate a sequence of discount factor shocks to match the dynamics of U.S. unemployment from May 2008 through December 2014, and I calibrate the degree of real wage rigidity to match the dynamics in consumer prices over this period. The goal is not to provide a complete account of the Great Recession, but instead to quantify the effects of UI extensions in a large downturn of this kind. With that said, untargeted macroeconomic time series validate the fit of the model despite the parsimony of focusing on a single driving force. In the simulation, as in the data, the nominal interest rate is at a binding zero lower bound during almost all of the period when UI benefits are extended.

Comparing the model to a counterfactual economy without these UI extensions, I conclude that the unemployment rate would have been as much as 0.4pp higher absent the extensions. I explore the mechanisms underlying this result in three ways, all of which are consistent with the steady-state impulse responses described above. First, in an analysis of each of the 13 shocks to UI policy in isolation, I find output multipliers ranging between 0.6-1.8, with the variation across these explained by agents' endogenously evolving expectations regarding the horizon over which the zero lower bound will bind and variation in the horizon of each UI shock. Second, the accommodative response of monetary policy is indeed crucial: in a counterfactual in which there is no zero lower bound, UI extensions would have triggered a monetary policy tightening and the magnitude of transfers themselves would have been smaller (as the recession would have been less severe). Third, the stimulus from UI is primarily driven by heterogeneity in MPCs and diminished precautionary saving at my estimated degree of real wage rigidity. That being said, more flexible real wages would only amplify the model-implied stimulus from UI at the zero lower bound.

Related literature The results of this paper are distinct from previous models of UI because I accommodate and focus on the combination of incomplete markets, nominal rigidities, and constraints on monetary policy. In environments without nominal rigidity, Krusell et al. [2010], Nakajima [2012a], and Mitman and Rabinovich [2015, 2020] find that increases in UI are contractionary. I demonstrate that these results are reversed with nominal rigidity

and constraints on monetary policy. In New Keynesian models with a zero lower bound but with complete asset markets, Albertini and Poirier [2015] and Christiano et al. [2016] find that increases in UI can be expansionary because the induced rise in inflation expectations lowers the real interest rate. I demonstrate that this channel is complemented by the direct stimulus to aggregate demand through heterogeneity in MPCs and diminished precautionary saving when markets are incomplete. Quantitatively, the latter channels are more important than that through inflation expectations in my simulation of the Great Recession. While MPC heterogeneity and precautionary saving have featured prominently in the policy debate regarding UI extensions, to my knowledge this is the first paper to quantify their role in a dynamic stochastic general equilibrium model.²

In doing so, my paper contributes to the rapidly growing literature on heterogeneous agent New Keynesian (HANK) models.³ The most closely related strand of this literature also accounts for endogenous unemployment, including Challe et al. [2017], den Haan et al. [2018], Gornemann et al. [2021], Heathcote and Perri [2018], McKay and Reis [2021], and Ravn and Sterk [2017, 2020]. Relative to all of these, my focus is on discretionary changes in UI rather than its time-invariant level. For this reason, my analysis emphasizes heterogeneity in MPCs alongside the effects of UI on precautionary savings, whereas the above papers have largely emphasized the latter alone. Furthermore, constraints on monetary policy play a crucial role in my analysis. Indeed, to my knowledge, my quantitative analysis of a HANK model subject to a sequence of shocks gradually pushing it “far” from steady-state with an endogenous and time-varying duration at the zero lower bound is novel to this literature.

By focusing on benefit extensions in a model calibrated to the Great Recession, my results also provide a structural interpretation of empirical analyses of the UI extensions in the U.S during this period. This includes the work of Boone et al. [2019], Chodorow-Reich et al. [2019], Dieterle et al. [2020], Hagedorn et al. [2016], and Hagedorn et al. [2019]. Researchers in this literature have obtained conflicting results. My findings are consistent with the upper end of stimulus estimated in this literature; the stimulus remains modest in

²My results here parallel the (much larger) literature studying conventional government spending in New Keynesian models. My analytical results in particular follow the conceptual approach of Woodford [2011], who contrasts the government spending multiplier in a conventional small-scale New Keynesian model in which monetary policy replicates the natural (flexible price) real interest rate; maintains a constant real interest rate; or maintains a constant nominal interest rate. In these cases, the multiplier is below one, equal to one, and greater than one, respectively. My quantitative results parallel those of Christiano et al. [2011], who quantify the government spending multiplier in a medium-scale model of the Great Recession. In section 5, I also quantify the government spending multiplier in my model, demonstrating that it is consistent with the empirical evidence and lending credibility to my analysis of the effects of UI.

³In addition to the papers focused on unemployment risk which I discuss here, this literature has included analyses of government spending (as in Auclert et al. [2018] and Hagedorn et al. [2019], among others) and monetary policy (as in Auclert [2019], Kaplan et al. [2018], and Werning [2015], among others).

terms of employment because, despite a sizeable output multiplier, transfers to the long-term unemployed are small versus output. The model can further explain differences in the precise estimates of researchers as arising from differences in the horizon of UI shocks studied, since these imply differential stimulus through precautionary saving.

Outline The rest of the paper is structured as follows. In section 2 I analytically characterize the effects of marginal increases in UI generosity in a very simple environment. In section 3 I introduce the full model and in section 4 I parameterize it to the U.S. economy. In section 5 I study impulse responses to UI policy, and in section 6 I evaluate the effects of benefit extensions during the Great Recession. Finally, in section 7 I conclude.

2 UI, nominal rigidity, and monetary policy

I first characterize the marginal effects of UI in a simple setting to frame the quantitative results which follow. An increase in UI raises aggregate demand if the unemployed have a higher MPC than the employed or if agents have a precautionary saving motive given future income risk. With nominal rigidity and monetary policy which does not respond by raising the nominal interest rate, this raises equilibrium output and employment.

2.1 A simple two-period environment

Consider the following environment with incomplete markets, search frictions, and nominal rigidity which captures the essence of the full model studied in the rest of the paper. Appendix A outlines the environment more formally, and here I summarize it.

There are two periods, 0 and 1. In period 0 (the “short run”), firms producing an intermediate good post vacancies, a measure one of potential workers search, matches occur randomly, and then production takes place. Monopolistically competitive retailers purchase intermediate goods and sell them as differentiated final goods subject to adjustment costs in price-setting. For simplicity, all firm profits are paid to employed agents. Period 1 (the “long run”) is an endowment economy in which agents receive an identical endowment. Agents trade a real bond between periods 0 and 1, and have standard concave, separable preferences over consumption and a convex, separable disutility from searching in period 0.

We can summarize agents’ micro-level optimization as follows. The representative agent’s optimal search effort at the start of period 0 is $s_0(\theta_0, y_0^e, b_0, r_0)$, a function of labor market tightness θ_0 , real income when employed y_0^e , real income when unemployed b_0 (UI), and the real interest rate r_0 . An employed agent’s value function and optimal consumption in period

0 are $v_0^e(y_0^e, r_0)$ and $c_0^e(y_0^e, r_0)$. For an unemployed agent these are $v_0^u(b_0, r_0)$ and $c_0^u(b_0, r_0)$, respectively. We suppress the dependence of these policies on exogenous period 1 income.

A small set of conditions fully characterize the equilibrium. Goods market clearing in period 0 requires

$$p(\theta_0)s_0(\cdot)c_0^e(\cdot) + (1 - p(\theta_0)s_0(\cdot))c_0^u(\cdot) = p(\theta_0)s_0(\cdot) - k\theta_0s_0(\cdot), \quad (1)$$

where the left-hand side is aggregate consumption and the right-hand side is aggregate production, and I have suppressed the arguments of s_0 , c_0^e , and c_0^u for brevity.⁴ Aggregate consumption depends on the consumption levels of employed and unemployed workers as well as the employment rate $p(\theta_0)s_0$, where $p(\theta_0)$ is the job-finding probability per unit search. Aggregate production depends on the employment rate less the measure of labor used in recruiting rather than production, $k\theta_0s_0$, where k controls the magnitude of hiring costs in this frictional labor market.⁵ We normalize productivity to one.

Government budget balance implies that

$$p(\theta_0)s_0(\cdot)y_0^e + (1 - p(\theta_0)s_0(\cdot))b_0 = p(\theta_0)s_0(\cdot) - k\theta_0s_0(\cdot), \quad (2)$$

where the left-hand side is aggregate income and the right-hand side is aggregate production.

Optimal vacancy posting by intermediate good firms requires

$$\mu_0^{-1} \left(1 - \frac{k}{q(\theta_0)} \right) = w_0, \quad (3)$$

where μ_0 denotes the price of final goods relative to intermediate goods, $q(\theta_0)$ is the vacancy-filling probability,⁶ and w_0 is the real wage. The left-hand side is the marginal benefit of hiring a worker, rising in the relative price of intermediate goods μ_0^{-1} and falling in the hiring costs per worker $k/q(\theta_0)$. The right-hand side is the marginal cost of employing a worker, simply the real wage.

Finally, Nash bargaining implies

$$\frac{1}{u'(c_0^e(\cdot))} (v_0^e(\cdot) - v_0^u(\cdot)) = \frac{\phi}{1 - \phi} (\mu_0^{-1} - w_0), \quad (4)$$

⁴This condition also uses that the consumption and production of each individual retailer variety is the same, an implication of the symmetry across retailers which we assume.

⁵Since tightness θ_0 is given by the ratio of vacancies to search, $k\theta_0s_0$ equals k times the measure of vacancies, so that k formally corresponds to the measure of recruiters per vacancy as in Shimer [2010]. This interpretation of course makes more sense with incumbent workers as in the quantitative model.

⁶As is standard, this is related to the job-finding probability and tightness according to $q(\theta_0) = \frac{p(\theta_0)}{\theta_0}$.

a standard surplus-sharing condition in which ϕ denotes the bargaining power of workers.

Conditional on b_0 and r_0 , these constitute 4 equations in 4 unknowns $\{y_0^e, \theta_0, \mu_0, w_0\}$.⁷ The real interest rate r_0 is in turn determined by the Fisher equation

$$1 + r_0 = (1 + i_0) \frac{P_0}{P_1},$$

which in turn depends on monetary policy $\{i_0, P_1\}$ as well as the short-run price level P_0 , which reflects the optimizing behavior of retailers subject to adjustment costs in price-setting.

2.2 Effects of a change in UI

I now characterize how a change in UI b_0 affects equilibrium output $y_0 \equiv p(\theta_0)s_0 - k\theta_0s_0$.

Regardless of the price-setting and monetary policy regime, (1) and (2) together imply the following result.⁸

Lemma 1. *As $k \rightarrow 0$ while $\frac{k}{1-\phi}$ remains fixed,*

$$\frac{dy_0}{db_0} \rightarrow \frac{(1 - p(\theta_0)s_0) \left(\frac{\partial c_0^u}{\partial y_0^u} - \frac{\partial c_0^e}{\partial y_0^e} \right) + \left(p(\theta_0)s_0 \frac{\partial c_0^e}{\partial r_0} + (1 - p(\theta_0)s_0) \frac{\partial c_0^u}{\partial r_0} \right) \frac{dr_0}{db_0}}{1 - (c_0^e - c_0^u) - \frac{1}{p(\theta_0)s_0} \frac{\partial c_0^e}{\partial y_0^e} b_0},$$

where all partial derivatives refer to the micro-level policy functions defined in the main text.

The first term in the numerator summarizes the direct, contemporaneous effect of UI on aggregate demand. It says that an increase in UI will raise aggregate demand if the unemployed have a higher MPC than the employed. This is scaled by the economy's unemployment rate, which determines the volume of transfers.

The second term in the numerator summarizes the indirect effect of UI on aggregate demand through the induced change in the real interest rate.

The denominator reflects amplification through the Keynesian cross. The more that employed agents consume versus unemployed agents, the larger will be the feedback to aggregate demand when employment rises. The higher is the MPC of employed agents, the larger will be the feedback to aggregate demand when employment rises and thus employed agents' tax burden to finance UI falls.

The assumption that the hiring cost (k) is sufficiently small ensures that the direct resource cost associated with changes in vacancy posting vanishes from Lemma 1. The assumption that $\frac{k}{1-\phi}$ remains fixed in this limit (so workers' bargaining share ϕ is sufficiently

⁷By Walras' Law, these conditions imply that the bond market also clears.

⁸The proof of this result, like all other results in this section, is provided in appendix A.

close to one) ensures that workers' surplus from employment remains positive even as hiring costs vanish. Both assumptions are empirically plausible; in the quantitative model studied later in this paper, k is indeed calibrated to be small and ϕ is calibrated close to one.

Armed with Lemma 1, we can interpret the main result of this section:

Proposition 1. *Suppose k is small, ϕ is close to one, and agents face a sufficiently tight borrowing constraint in period 0. Then:*

- *If prices are fully flexible (and UI b_0 is close to optimal), $\frac{dy_0}{db_0} < 0$ and $\frac{dr_0}{db_0} > 0$.*
- *If prices are sticky but monetary policy replicates the real interest rate r_0 absent nominal rigidity, $\frac{dy_0}{db_0} < 0$ is identical to that under flexible prices.*
- *If prices are sticky and monetary policy maintains a constant r_0 , then $\frac{dy_0}{db_0} > 0$.*

The assumption that agents face a sufficiently tight borrowing constraint in period 0 has the natural implication that the unemployed will be constrained whereas the employed will not. Thus, the unemployed have a higher MPC than the employed, so by Lemma 1 the increase in UI will generate an initial stimulus to aggregate demand.

With fully flexible prices, equilibrium output nonetheless falls with more generous UI because it raises equilibrium wages, depressing vacancy creation, and further reduces workers' incentive to search.⁹ Lemma 1 thus makes clear that the initial stimulus to aggregate demand must be met by an increase in the real interest rate which is sufficiently strong that it lowers aggregate consumption (since $\frac{\partial c_0^e}{\partial r_0}$ is necessarily negative when the magnitude of borrowing/lending is small and thus substitution effects dominate income effects). With sticky prices but monetary policy replicating this real interest rate, the equilibrium effects of UI are identical to the flexible price case.

Conversely, with nominal rigidity and monetary policy maintaining a constant real interest rate, there is no crowd out of the stimulus to aggregate demand characterized in Lemma 1. As is standard in New Keynesian models, endogenous mark-ups are crucial to this mechanism. Indeed, in firms' optimal vacancy-posting condition (3), a lower gross mark-up earned by retailers μ_0 is consistent with firms' increase in real marginal cost.

2.3 Additional insights

The key takeaway from the prior subsection is that if a marginal increase in UI stimulates aggregate demand, it will raise output given nominal rigidity and a constant real interest rate.

⁹The assumption that the initial level of UI is close to optimal is sufficient to sharply sign these general equilibrium responses of wages and search. The optimal level of UI here refers to the value of b_0 which maximizes utilitarian social welfare given flexible prices in period 0.

This contrasts starkly with the equity-efficiency trade-off emphasized in partial equilibrium analyses in public finance and general equilibrium analyses ignoring nominal rigidity.

Several extensions presented in appendix A provide additional insights on this result which help to frame the quantitative analysis in the remainder of the paper.

Precautionary saving and dynamic amplification The above results demonstrate that aggregate demand rises with UI in the same period if the unemployed have a higher MPC than the employed. Extending the model to an infinite horizon with unemployment risk in future periods, an expected *future* increase in UI in any period $t \geq 1$ also stimulates aggregate demand in prior periods by reducing agents' incentive to precautionary save. This again raises output given nominal rigidity and a constant real interest rate.

We can also ask how the magnitude of stimulus in period 0 varies with the period t in which UI is raised. As t rises, there are two offsetting forces. On the one hand, the stimulus in period 0 is dampened because binding borrowing constraints limit the fraction of agents which respond to changes in future income. This is consistent with the dampening effects of forward guidance in models with incomplete markets, as in McKay et al. [2016]. On the other hand, the stimulus in period 0 is amplified because of the dynamic interplay between lower income risk, higher aggregate demand, and thus a higher job-finding rate. This mechanism has been emphasized by Acharya and Dogra [2020], Challe et al. [2017], McKay and Reis [2016, 2021], and Ravn and Sterk [2017, 2020]. We can prove that this latter effect will dominate the former effect if the initial generosity of UI is sufficiently low.

Trade in equities and investment These insights are robust to allowing for trade in equities and a separation rate less than one (as in the quantitative analysis of the rest of the paper). In previous work, Challe et al. [2017], den Haan et al. [2018], and Krueger et al. [2016a,b] have emphasized that a decline in savings would reduce the demand for firm equity and investment, counteracting the stimulus to output. The endogenous rise in the real interest rate is the key mechanism by which investment — which encompasses hiring in a frictional labor market — is crowded out. Conditional on the path of real interest rates, an increase in UI stimulates output. In particular, the decline in desired savings must be met by an increase in income rather than decline in investment to clear the asset market.

Constant i versus r The above results assume that the monetary authority maintains a constant *real* interest rate. In practice, monetary policy more naturally features a constant *nominal* interest rate — as when the nominal interest rate is at the zero lower bound, as in my simulation of the Great Recession later in this paper. In such a context, the rise in firms'

marginal cost due to an increase in UI will further amplify its stimulus, as it raises expected inflation, lowers the ex-ante real interest rate, and thus stimulates output. This mechanism exists in representative agent economies, having been studied in a standard New Keynesian model by Eggertsson [2010] and Werning [2012] and in the context of UI in particular by Albertini and Poirier [2015] and Christiano et al. [2016]. The above analysis complements this work by demonstrating that with incomplete markets, UI is stimulative even absent this inflation expectations channel.

2.4 Summing up

Taken together, the effects of a marginal increase in UI depend crucially on the degree of nominal rigidity and response of monetary policy. Absent nominal rigidity, an increase in UI is contractionary. This remains with nominal rigidity but monetary policy which replicates the real interest rate under flexible prices. With nominal rigidity and a constant real interest rate, a marginal increase in UI is instead expansionary if the unemployed have a higher MPC than the employed or if agents have a precautionary saving motive. With a constant nominal interest rate, a marginal increase in UI is further expansionary by raising inflation expectations. With these mechanisms in mind, the rest of the paper quantifies the effects of UI extensions in a richer model of the U.S. economy during the Great Recession.

3 Model

The framework integrates workhorse quantitative models of incomplete markets, search and matching, and nominal rigidities in a unified framework.

3.1 Environment and equilibrium

Timing Each period, firms post vacancies, workers search, and matches occur randomly; production takes place and agents face a standard consumption-savings problem; and then a fraction of employed workers exogenously separate.

Workers Each period workers differ in their employment status ($i \in \{e, u\}$), wealth in bonds (z_t^b) and shares in firm equity (z_t^f), and a vector of other idiosyncratic states (ζ_t^i) which evolve exogenously conditional on $\{e, u\}$ transitions. These latter states will capture dimensions of heterogeneity such as labor productivity when employed and the duration of unemployment when unemployed. Conditional on an unemployed worker becoming employed in period t , they transition according to $\Gamma_t(\zeta_t^e | \zeta_t^u)$. Conditional on an employed worker

remaining employed or separating between t and $t+1$, they transition according to $\Gamma_t(\zeta_{t+1}^e|\zeta_t^e)$ and $\Gamma_t(\zeta_{t+1}^u|\zeta_t^e)$, respectively. Finally, among unemployed workers between t and $t+1$ they transition according to $\Gamma_t(\zeta_{t+1}^u|\zeta_t^u)$.

We study an environment without aggregate risk (in the transitional dynamics, aggregate shocks are unanticipated). Hence, except for the initial period when any shock is realized, in equilibrium we can collapse the state variables (z_t^b, z_t^f) into a worker's total real wealth

$$z_t \equiv z_t^b + \frac{\Pi_t + Q_t}{P_t} z_t^f \quad (5)$$

where Π_t is the dividend paid on firm equity, Q_t is its price, and P_t is the price level. To simplify notation, we thus exposit the model in terms of total wealth z_t alone.

At the beginning of period t , incumbent workers' value functions are

$$\tilde{v}_t^e(z_t; \zeta_t^e) = v_t^e(z_t; \zeta_t^e), \quad (6)$$

and initially unemployed workers' value functions are

$$\begin{aligned} \tilde{v}_t^u(z_t; \zeta_t^u) = \max_{s_t} (p_t(\theta_t; \zeta_t^u) s_t) \int_{\zeta_t^e} v_t^e(z_t; \zeta_t^e) \Gamma_t(\zeta_t^e|\zeta_t^u) d\zeta_t^e \\ + (1 - p_t(\theta_t; \zeta_t^u) s_t) v_t^u(z_t; \zeta_t^u) - \psi(s_t). \end{aligned} \quad (7)$$

In the latter, unemployed agents' disutility of search effort is given by $\psi(s_t)$ and their job-finding probability per unit search is

$$p_t(\theta_t; \zeta_t^u) = \bar{m}_t^{1-\eta} m_t(\zeta_t^u) \theta_t^\eta, \quad (8)$$

where \bar{m}_t controls overall match efficiency, $m_t(\zeta_t^u)$ controls relative match efficiency, and θ_t is labor market tightness characterized further below.

In the middle of period t , the employed face

$$\begin{aligned} v_t^e(z_t; \zeta_t^e) = \max_{c_t^e, z_{t+1}^e} u(c_t^e) \\ + \beta_t(\zeta_t^e) \left[(1 - \delta_t(\zeta_t^e)) \int_{\zeta_{t+1}^e} \tilde{v}_{t+1}^e(z_{t+1}^e; \zeta_{t+1}^e) \Gamma_t(\zeta_{t+1}^e|\zeta_t^e) d\zeta_{t+1}^e \right. \\ \left. + \delta_t(\zeta_t^e) \int_{\zeta_{t+1}^u} \tilde{v}_{t+1}^u(z_{t+1}^e; \zeta_{t+1}^u) \Gamma_t(\zeta_{t+1}^u|\zeta_t^e) d\zeta_{t+1}^u \right] \text{ s.t.} \\ P_t c_t^e + (1 + i_t)^{-1} P_{t+1} z_{t+1}^e \leq Y_t^e(\zeta_t^e) + P_t z_t, \\ z_{t+1}^e \geq \underline{z}_t, \end{aligned} \quad (9)$$

and the unemployed face

$$\begin{aligned}
v_t^u(z_t; \zeta_t^u) &= \max_{c_t^u, z_{t+1}^u} u(c_t^u) + \beta_t(\zeta_t^u) \int_{\zeta_{t+1}^u} \tilde{v}_{t+1}^u(z_{t+1}^u; \zeta_{t+1}^u) \Gamma_t(\zeta_{t+1}^u | \zeta_t^u) d\zeta_{t+1}^u \text{ s.t.} \\
P_t c_t^u + (1 + i_t)^{-1} P_{t+1} z_{t+1}^u &\leq Y_t^u(\zeta_t^u) + P_t z_t, \\
z_{t+1}^u &\geq \underline{z}_t,
\end{aligned} \tag{10}$$

where each agent's discount factor is $\beta_t(\zeta_t^i)$, income inclusive of government taxes and transfers is $Y_t^i(\zeta_t^i)$, and when employed, separation rate at the end of the period is $\delta_t(\zeta_t^e)$. In asset markets, agents face the nominal interest rate i_t and borrowing constraint \underline{z}_t .

Producers A representative producer hires workers to produce a homogenous intermediate good sold at price P_t^I . In period t , the producer starts with a stock \tilde{p}_t^e of incumbent workers and can hire more workers by posting ν_t vacancies which are filled with probability $q_t(\theta_t)$. Managing a vacancy requires k incumbent workers with the average level of productivity, \bar{a}_t . The distribution of workers across the idiosyncratic state space is relevant for the firm because these states affect workers' productivity, separation rate, and wages; let $\tilde{\varphi}_t^e(z_t; \zeta_t^e)$ denote the distribution of state variables among incumbent workers, and $\frac{m_t(\zeta_t^u) s_t(z_t; \zeta_t^u)}{\bar{s}_t} \tilde{\varphi}_t^u(z_t; \zeta_t^u)$ the distribution of state variables among the pool of unemployed workers matched with the firm. The latter reflects the raw distribution of unemployed workers $\tilde{\varphi}_t^u(\cdot)$ weighted by workers' relative match efficiency $m_t(\zeta_t^u)$ and search effort $s_t(z_t; \zeta_t^u)$ relative to weighted average search

$$\bar{s}_t \equiv \int_{\zeta_t^u} \int_{z_t} m_t(\zeta_t^u) s_t(z_t; \zeta_t^u) \tilde{\varphi}_t^u(z_t; \zeta_t^u) dz_t d\zeta_t^u. \tag{11}$$

Hence, the representative producer faces

$$J_t^I(\tilde{p}_t^e, \tilde{\varphi}_t^e) = \max_{\Pi_t^I, \nu_t, \tilde{p}_{t+1}^e, \tilde{\varphi}_{t+1}^e} \Pi_t^I + (1 + i_t)^{-1} J_{t+1}^I(\tilde{p}_{t+1}^e, \tilde{\varphi}_{t+1}^e) \tag{12}$$

subject to its flow of funds

$$\begin{aligned}
\Pi_t^I &= \int_{\zeta_t^e} \int_{z_t} (P_t^I a_t(\zeta_t^e) - W_t(\zeta_t^e)) \times \\
&\left[\tilde{p}_t^e \tilde{\varphi}_t^e(z_t; \zeta_t^e) + q_t(\theta_t) \nu_t \int_{\zeta_t^u} \Gamma_t(\zeta_t^e | \zeta_t^u) \frac{\bar{m}_t(\zeta_t^u) s_t(z_t; \zeta_t^u)}{\bar{s}_t} \tilde{\varphi}_t^u(z_t; \zeta_t^u) d\zeta_t^u \right] dz_t d\zeta_t^e - P_t^I \bar{a}_t k \nu_t,
\end{aligned}$$

the evolution of its stock of incumbents

$$\begin{aligned} \tilde{P}_{t+1}^e = & \int_{\zeta_t^e} \int_{z_t} (1 - \delta_t(\zeta_t^e)) \left[\tilde{p}_t^e \tilde{\varphi}_t^e(z_t; \zeta_t^e) \right. \\ & \left. + q_t(\theta_t) \nu_t \int_{\zeta_t^u} \Gamma_t(\zeta_t^e | \zeta_t^u) \frac{\bar{m}_t(\zeta_t^u) s_t(z_t; \zeta_t^u)}{\bar{s}_t} \tilde{\varphi}_t^u(z_t; \zeta_t^u) d\zeta_t^u \right] dz_t d\zeta_t^e \end{aligned}$$

and the evolution of $\tilde{\varphi}_t^e$ consistent with Bayes' Rule. Nominal wages $W_t(\zeta_t^e)$ depends on each worker's type and are described further below. Since there is no aggregate risk, the producer discounts future profits at the nominal interest rate i_t .

Retailers Retailers purchase the intermediate good and sell a differentiated variety to consumers. When choosing its price P_{tj} , retailer j faces Rotemberg [1982] adjustment costs

$$AC_{tj} = \frac{\psi}{2} \left(\frac{P_{tj}}{P_{t-1j}} - 1 \right)^2 \left(\int_0^1 P_{tk} y_{tk} dk \right)$$

given its prior price P_{t-1j} and aggregate nominal output $\int_0^1 P_{tk} y_{tk} dk$. Hence, retailer j faces

$$\begin{aligned} J_{tj}^R(P_{t-1j}) = & \max_{\Pi_{tj}^R, P_{tj}, y_{tj}, x_{tj}} \Pi_{tj}^R + (1 + i_t)^{-1} J_{t+1j}^R(P_{tj}) \text{ s.t.} \\ \Pi_{tj}^R = & P_{tj} y_{tj} - (1 + \tau^R) P_t^I x_{tj} - \frac{\psi}{2} \left(\frac{P_{tj}}{P_{t-1j}} - 1 \right)^2 \left(\int_0^1 P_{tk} y_{tk} dk \right) - T_t^R, \\ & y_{tj} = x_{tj}, \\ & y_{tj} = \left(\frac{P_{tj}}{P_t} \right)^{-\varepsilon} c_t, \end{aligned} \tag{13}$$

where y_{tj} is its production using x_{tj} units of the intermediate good and a linear technology; c_t is the sum of $c_t^i(z_t; \zeta_t^i)$ across the idiosyncratic state space; and τ^R is an ad-valorem tax on inputs, rebated back to retailers via the lump-sum instrument T_t^R .¹⁰ I focus on the case with symmetric initial prices and thus identical production and consumption of varieties in equilibrium, so I drop the index j going forward.

Policy The government specifies a Taylor rule for i_t , its bond position z_t^g , and its schedule of real UI benefits $b_t(\zeta_t^e)$.¹¹ It balances its budget using a tax on the employed T_t .

Wages and income Finally, a union represents workers of each type ζ_t^e and Nash bargains the wage $W_t^{nb}(\zeta_t^e)$ with producers given a bargaining share ϕ and a utilitarian welfare function

¹⁰I further assume that the price adjustment costs are paid to the government and rebated back via T_t^R , so that the only effect of these costs is on retailers' price-setting decisions, not on resources used.

¹¹Following Woodford [2003], I model the "cashless limit" where money serves only as the unit of account.

over workers of that type having different levels of wealth.¹² In the model's steady-state, the real wage is given by the Nash bargained wage: $w(\zeta_t^e) = \frac{W_t^{nb}(\zeta_t^e)}{P}$. Following Hall [2005] and Blanchard and Gali [2010], in response to aggregate shocks we then allow the equilibrium real wage to be a weighted average of the re-bargained wage and the steady-state real wage

$$\frac{W_t(\zeta_t^e)}{P_t} = \iota w(\zeta_t^e) + (1 - \iota) \frac{W_t^{nb}(\zeta_t^e)}{P_t}, \quad (14)$$

allowing us to accommodate real wage rigidity within the bilaterally efficient bargaining set.

By assuming wages are (at least partially) Nash bargained, but are bargained at the level of worker types rather than individual workers, we retain the desirable axiomatic properties of Nash bargaining while avoiding the substantial computational difficulties of solving for the transitional dynamics of a wage schedule over the entire wealth distribution over time.¹³ I verify that equilibrium wages remain bilaterally efficient for all individual workers in all calibrations and all transitional dynamics studied in the paper.

Given these wages and the above policy instruments, agents' incomes are

$$Y_t^e(\zeta_t^e) = W_t(\zeta_t^e) - T_t, \quad (15)$$

$$Y_t^u(\zeta_t^u) = P_t b_t(\zeta_t^u). \quad (16)$$

Market clearing As already defined, at the beginning of period t the employment rate is \tilde{p}_t^e and the distributions of incumbent and unemployed workers are $\tilde{\varphi}_t^e(z_t; \zeta_t^e)$ and $\tilde{\varphi}_t^u(z_t; \zeta_t^u)$, respectively. Let p_t^e , $\varphi_t^e(z_t; \zeta_t^e)$, and $\varphi_t^u(z_t; \zeta_t^u)$ denote the analogs in the middle of period t .

Then asset market clearing (the sum of bond and equity market clearing) is

$$p_t^e \int_{\zeta_t^e} \int_{z_t} z_{t+1}^e(z_t; \zeta_t^e) \varphi_t^e(z_t; \zeta_t^e) dz_t d\zeta_t^e + (1 - p_t^e) \int_{\zeta_t^u} \int_{z_t} z_{t+1}^u(z_t; \zeta_t^u) \varphi_t^u(z_t; \zeta_t^u) dz_t d\zeta_t^u + z_{t+1}^g = \frac{\Pi_{t+1} + Q_{t+1}}{P_{t+1}}, \quad (17)$$

where aggregate dividends and the price of equity satisfy

$$\Pi_t = \Pi_t^I + \int_0^1 \Pi_{tj}^R dj, \quad (18)$$

¹²We assume the union represents newly matched workers and incumbents then receive the same wage.

¹³A similar approach has been used by Costain and Reiter [2005] and Nakajima [2007]. Using a Krusell and Smith [1998] solution approach, Krusell et al. [2010] and Nakajima [2012b] solve for wages as a function of individual worker wealth. Using my sequence space solution approach — which affords other advantages, such as the ability to study a wide variety of aggregate shocks to UI policy and fundamentals — this is extremely computationally demanding. I leave it to future work to make progress on this important task.

$$Q_t = (1 + i_t)^{-1} (\Pi_{t+1} + Q_{t+1}). \quad (19)$$

In the labor market, labor market tightness

$$\theta_t = \frac{\nu_t}{(1 - \tilde{p}_t^e) \bar{s}_t} \quad (20)$$

determines the vacancy-filling probability and job-finding probability per unit search. Hence, the aggregate number of matches corresponding to the job-finding probabilities in (8) is

$$\bar{m}_t^{1-\eta} ((1 - \tilde{p}_t^e) \bar{s}_t)^{1-\eta} \nu_t^\eta,$$

and the vacancy-filling probability referenced in the producer problem (12) is given by

$$q_t(\theta_t) \equiv \frac{\bar{m}_t^{1-\eta} ((1 - \tilde{p}_t^e) \bar{s}_t)^{1-\eta} \nu_t^\eta}{\nu_t} = \bar{m}_t^{1-\eta} \theta_t^{\eta-1}.$$

Absent heterogeneity in match efficiency ($m_t(\zeta_t^u) = 1$ for all ζ_t^u), this specification of the labor market collapses to the Cobb-Douglas case of that in Pissarides [2000].¹⁴

Goods market clearing is

$$\begin{aligned} p_t^e \int_{\zeta_t^e} \int_{z_t} c_t^e(z_t; \zeta_t^e) \varphi_t^e(z_t; \zeta_t^e) dz_t d\zeta_t^e + \\ (1 - p_t^e) \int_{\zeta_t^u} \int_{z_t} c_t^u(z_t; \zeta_t^u) \varphi_t^u(z_t; \zeta_t^u) dz_t d\zeta_t^u = \int_{\zeta_t^e} \int_{z_t} a_t(\zeta_t^e) \left[\tilde{p}_t^e \tilde{\varphi}_t^e(z_t; \zeta_t^e) + \right. \\ \left. q(\theta_t) \nu_t \int_{\zeta_t^u} \Gamma_t(\zeta_t^e | \zeta_t^u) \frac{m_t(\zeta_t^u) s_t(z_t; \zeta_t^u)}{\bar{s}_t} \tilde{\varphi}_t^u(z_t; \zeta_t^u) d\zeta_t^u \right] dz_t d\zeta_t^e - \bar{a}_t k \nu_t. \end{aligned} \quad (21)$$

Finally, budget balance for the government is characterized by

$$p_t^e T_t + P_t z_t^g = P_t (1 - p_t^e) \int_{\zeta_t^u} \int_{z_t} b_t(\zeta_t^u) \varphi_t^u(z_t; \zeta_t^u) dz_t d\zeta_t^u + (1 + i_t)^{-1} P_{t+1} z_{t+1}^g. \quad (22)$$

¹⁴Shimer [2004] challenges an equilibrium implication of this matching function that search effort rises in tightness. Mukoyama et al. [2018] propose a generalized job-finding function where search effort can fall in tightness, consistent with evidence from the Great Recession. I conjecture that the results in this paper would be little changed under such a job-finding function, since I find that the aggregate consumption responses dominate search responses in determining the macroeconomic effects of UI in the presence of nominal rigidity and accommodative monetary policy. I maintain the Pissarides [2000] approach because it can easily accommodate an aggregate matching function with heterogeneous match efficiencies, which I need to quantitatively match negative duration dependence in observed job-finding rates later in this paper.

Equilibrium Conditional on policy $\{b_t(\zeta_t^u), z_{t+1}^g, T_t\}$ and the monetary policy rule, as well as exogenous aggregates $\{a_t(\zeta_t^e), \delta_t(\zeta_t^e), m_t(\zeta_t^u), \beta_t(\zeta_t^i), \bar{a}_t, \bar{m}_t, \underline{z}_t\}$ and initial prices $\{P_{-1}\}$, the definition of equilibrium is standard. I characterize the equilibrium in appendix B.

3.2 Functional forms

I now specify the functional forms assumed when parameterizing and quantifying the model.

3.2.1 Heterogeneity beyond employment status and wealth

Beyond employment status and wealth, I assume that agents differ in

$$\begin{aligned}\zeta_t^e &\equiv (a_t^P, a_t^T, \nu^\beta), \\ \zeta_t^u &\equiv (a_t^P, a_t^T, \nu^\beta, d_t, 1_{UI}),\end{aligned}$$

where $\{a_t^P, a_t^T\}$ are components of productivity, ν^β indexes discount factor heterogeneity, d_t is the duration of unemployment, and 1_{UI} is an indicator for UI eligibility and take-up. The transition probabilities $\Gamma_t(\zeta_t^e|\zeta_t^u)$, $\Gamma_t(\zeta_{t+1}^e|\zeta_t^e)$, $\Gamma_t(\zeta_{t+1}^u|\zeta_t^e)$, and $\Gamma_t(\zeta_{t+1}^u|\zeta_t^u)$ are induced by the transitions for each state variable described below.

Shocks to labor productivity To capture income volatility conditional on employment, I adopt a standard persistent-transitory process for labor productivity a_t such that

$$a_t(\zeta_t^e) \equiv a_t^P a_t^T. \quad (23)$$

When a worker is employed in period t , these components evolve as

$$\begin{aligned}\log a_t^P &= \log \bar{a}_t + \eta_t^P, \\ \eta_t^P &= \rho^P \eta_{t-1}^P + \varepsilon_t^P, \varepsilon_t^P \sim N(0, (\sigma^P)^2), \\ \log a_t^T &\sim N\left(-\frac{1}{2}(\sigma^T)^2, (\sigma^T)^2\right),\end{aligned} \quad (24)$$

where \bar{a}_t controls the economy-wide average productivity and follows an exogenous process. When a worker is unemployed in period t , the transitory component a_t^T continues to evolve as above, and the persistent component η_t^P remains fixed.¹⁵

¹⁵Given the specification of UI benefits described later in this section, the latter assumption ensures that an unemployed worker's UI benefits remain constant until they expire.

Heterogeneous discount factors As argued by Carroll et al. [2017] and Krueger et al. [2016a], discount factor heterogeneity can further help in matching the empirical distribution of wealth. I assume that ν^β indexes this heterogeneity, with a fraction one-third of worker-consumers having $\nu^\beta = -\Delta^\beta$, one-third having $\nu^\beta = 0$, and one-third having $\nu^\beta = \Delta^\beta$ for some positive dispersion parameter Δ^β . An agent's period t discount factor is then

$$\beta_t(\zeta_t^i) = \bar{\beta}_t + \nu^\beta \quad (25)$$

where $\bar{\beta}_t$ is the economy-wide average discount factor and follows an exogenous process.

Heterogeneous separation rates Separation rate heterogeneity allows the model to accommodate the uneven risk of unemployment across the population, with its attendant consequences for the wealth distribution. In particular, an agent's separation rate is

$$\delta_t(\zeta_t^e) = \bar{\delta}_t \left(1 + (\epsilon_a^\delta / \bar{\delta}) (\log a_t^P - \log \bar{a}_t) + (\epsilon_\beta^\delta / \bar{\delta}) (\beta_t(\zeta_t^e) - \bar{\beta}_t) \right), \quad (26)$$

where $\bar{\delta}_t$ controls the economy-wide average separation rate and follows an exogenous process. In steady-state, $\bar{\delta}_t = \bar{\delta}$ and thus the parameters ϵ_a^δ and ϵ_β^δ control the elasticities of an agent's separation rate with respect to her productivity and discount factor, respectively.

Incomplete eligibility and take-up In practice, not all newly unemployed workers are eligible for benefits, and many who are still do not take it up (Blank and Card [1991]). To capture this pattern in the data, I assume that only with probability ζ does a newly unemployed worker begin receiving benefits, a state denoted with indicator 1_{UI} .¹⁶

Structural duration dependence Finally, structural duration dependence allows the model to better reflect empirical hazard rates out of unemployment, consistent with the evidence of Ghayad [2013], Kroft et al. [2013], Eriksson and Rooth [2014] and others. I assume that the relative match efficiency of an unemployed agent with duration d_t relevant for her job-finding probability per unit effort (8) is

$$\bar{m}_t(\zeta_t^u) = \begin{cases} \exp(d_t \lambda) & \text{for } d_t < 8, \\ \exp(7\lambda) & \text{for } d_t \geq 8. \end{cases} \quad (27)$$

¹⁶Using the 2001 and 2008 SIPP panels studied in appendix C, I find that household income prior to unemployment has an association with an indicator for UI receipt which is statistically indistinguishable from zero once we exclude the bottom 25% of income observations. Hence, for parsimony, I assume that all workers have an identical probability of receiving UI conditional on job loss.

Here, λ controls duration dependence in match efficiencies. I assume furthermore that match efficiencies are flat after an unemployed agent has been unemployed for 8 months or more.^{17,18}

3.2.2 Functional forms for primitives and policy

I specify the structure of UI and monetary policy to be consistent with U.S. practice, and choose standard preferences over consumption and search.

Household income during unemployment UI benefits have finite duration and scale with earnings over a base period prior to job loss (up to a cap).¹⁹ Moments from the Survey of Income and Program Participation (SIPP) in appendix C reveal the importance of non-UI income through unemployment. I thus assume transfers to an unemployed agent with productivity $\{a_t^P, a_t^T\}$, discount factor ν^β , duration d_t , and UI eligibility/take-up indicator 1_{UI}

$$b_t(\zeta_t^u) = \begin{cases} \min\{rr_t(1 - \omega_0)w_t(a_t^P, 1, \nu^\beta), \bar{w}i_t\} + \omega_1 w_t(a_t^P, a_t^T, \nu^\beta) & \text{if } 1_{UI} = 1, d_t < \bar{d}_t, \\ \omega_2 w_t(a_t^P, a_t^T, \nu^\beta) & \text{if } 1_{UI} = 0 \text{ or } d_t \geq \bar{d}_t, \end{cases} \quad (28)$$

where the job loser is assumed to have earned a fraction $1 - \omega_0$ of household income prior to job loss; UI policy parameters in period t are replacement rate rr_t , maximum benefit level $\bar{w}i_t$, and duration \bar{d}_t ; and $\{\omega_1, \omega_2\}$ control the level of non-UI income through the spell.²⁰ Higher ω_1 than ω_0 parsimoniously captures the household income implications of an “added worker effect” after job loss (e.g., Lundberg [1985], Stephens [2002]). Higher ω_2 than ω_1 captures the crowd-out of non-UI income during UI receipt, another form of moral hazard associated with UI.

Taylor rule Monetary policy specifies the nominal interest rate according to a standard Taylor rule with a zero lower bound

$$i_t = \max \{r + \phi^\Pi \Pi_t^P + \phi^y (y_t/y - 1), 0\}, \quad (29)$$

¹⁷This is computationally convenient because it limits the state space. But it is also consistent with the flatter empirical hazards out of unemployment after 8 months reported in Figure 7(A) of Kroft et al. [2016].

¹⁸An alternative literature has argued that dynamic selection among heterogeneous job-seekers better explains observed duration dependence in job-finding rates (Ahn and Hamilton [2020], Alvarez et al. [2015]). I refer the reader to the previous drafts of this paper on my website in which I demonstrate that the macroeconomic effects of changes in UI are robust to this alternative environment.

¹⁹UI benefits are also subject to a floor (a minimum weekly benefit amount), but given the discretized income process in my calibration this would not bind at observed values, so I ignore it for simplicity.

²⁰As documented in appendix C, non-UI income is mostly the earnings of other household members. Modeling this as a transfer is a parsimonious way of accounting for it without extending the framework to model dual-income households. The results are robust to modeling this income as an endowment instead.

where r denotes the steady-state real interest rate, $\Pi_t^P \equiv \frac{P_t}{P_{t-1}} - 1$ denotes aggregate inflation, y_t denotes aggregate output, and y denotes its value in steady-state.

Preferences Finally, among workers, I assume CRRA flow utility from consumption

$$u(c) = \frac{c^{1-\sigma} - 1}{1-\sigma}$$

as well as isoelastic disutility of searching when unemployed

$$\psi(s) = s^{\xi+1}.$$

4 Stationary recursive competitive equilibrium

In this section I calibrate the model to match patterns in wealth, income, and employment in U.S. data. The consistency of the stationary recursive competitive equilibrium (RCE) with available evidence on consumption sensitivities to income by employment status, the incidence and effects of unemployment, and disincentive effects of UI can give us confidence in its demand- and supply-side predictions in response to redistribution.

4.1 Calibrating the stationary RCE

I first set a subset of parameters to be consistent with common benchmarks and the broader literature. Relative risk aversion is $\sigma = 1$, allowing us to normalize $\bar{a} = 1$ since the environment is consistent with balanced growth. The elasticity of job-finding with respect to tightness is $\eta = 0.7$ consistent with the range reported in Petrongolo and Pissarides [2001], and the average separation rate is $\bar{\delta} = 0.034$ as calculated by Shimer [2010] at a monthly frequency. The persistent-transitory process for worker productivity is $\rho^P = 0.997$, $\sigma^P = 0.057$, and $\sigma^T = 0.228$, based on Krueger et al. [2016a]’s estimates using post-tax, per-capita household earnings data conditional on an employed household head, adjusted to a monthly frequency.²¹ The fraction of household income earned by the head prior to job loss is $1 - \omega_0 = 0.67$, consistent with evidence from the SIPP in appendix C. I assume $\tau^R = -7.6\%$ so that, anticipating the calibration targets described below, government debt will be roughly 60% of annual output, consistent with total public debt relative to GDP in

²¹Using annual data from the Panel Study of Income Dynamics, these authors estimate a persistent-transitory process of $\rho_a^P = 0.9695$, $(\sigma_a^P)^2 = 0.0384$, $(\sigma_a^T)^2 = 0.0522$. They then translate these estimates to a quarterly frequency; using their same approach, I adjust these to a monthly frequency using $\rho^P = (\rho_a^P)^{1/12}$, $(\sigma^P)^2 = (1 - (\rho^P)^2) \frac{(\sigma_a^P)^2}{1 - (\rho_a^P)^2}$, $\sigma^T = \sigma_a^T$.

Moment	Target	Achieved	Parameter	Value
<i>Real rate, wealth, and average MPC</i>				
Real interest rate (ann.)	2%	2.0%	z^g/\bar{a}	-8.3
Mean wealth / monthly HH income	66.0	65.5	$\bar{\beta}$	0.99335
Mean (U-E) wealth / monthly HH income	-47.5	-47.6	ϵ_β^δ	-4.55
Fraction HH with negative wealth	0.08	0.05	\underline{z}/\bar{a}	-0.15
Mean quarterly MPC to \$500 rebate*	0.21	0.21	Δ^β	0.0045
<i>Income during unemployment</i>				
Share unemployed receiving UI	0.39	0.42	ζ	0.5
Max UI / mean wage UI recipients	0.6	0.60	$\frac{\zeta}{\bar{w}}$	0.4
Mean HH income w. UI / pre job loss	0.76	0.75	ω_1	0.37
Mean HH income w.o UI / pre job loss	0.55	0.56	ω_2	0.50
<i>Incidence of unemployment</i>				
Unemployment rate	5%	5.0%	ϕ	0.957
Fraction w/ duration > 6 mos	0.17	0.17	λ	-0.14
EU probability on log wage	-0.012	-0.012	ϵ_a^δ	-0.011
<i>Search and the labor market</i>				
Duration elasticity to benefit duration	0.1	0.09	ξ	15
Vacancies per unemployed worker	0.634	0.634	\bar{m}	0.19
Fraction of monthly wage to hire worker	0.108	0.108	k/\bar{a}	0.044

Table 1: targeted moments and calibration results

Note: sources for targets are provided in the main text. The table provides the main parameter used to target each moment. Figure 1 describes the identification of key parameters in particular.

* Among households earning \leq \$75k ann. income (0.92 times average household income in model).

the years immediately preceding the Great Recession.²² In most states, regular UI benefits are paid for 6 months, and the weekly benefit amount (among those not hitting the cap) replaces roughly half of wages. I thus set $rr = 50\%$ for $\bar{d} = 6$ months.

I calibrate the remaining parameters to match salient patterns in wealth, income, and unemployment in U.S. data prior to the Great Recession.²³ The targeted moments and simulated values are summarized in Table 1. The table indicates the value of the model parameter which is primarily varied in order to target the given moment.

The first set of parameters target key features of wealth and income. Combining the data for employed and unemployed households from the 2004 Survey of Consumer Finances (SCF) summarized in appendix C, and defining wealth as total net worth, I find that mean wealth equaled 66.0 times average monthly household income, mean wealth of households with an

²²Government debt to output equals aggregate wealth to output, less the discounted present value of firm profits to output. Absent hiring costs (which will indeed be calibrated to be small, consistent with available evidence), firm profits are retailer profits. Relative to output, these are $1 - \mu^{-1} = 1 - \frac{\epsilon-1}{\epsilon} \frac{1}{1+\tau^R}$. Given $\epsilon = 6$, the targeted aggregate wealth to output, and targeted real interest rate, I thus set τ^R accordingly.

²³The computational algorithm used to solve the stationary RCE is discussed in appendix F.

unemployed head was 47.5 months of average household income below that of households with an employed head, and 8% of households had negative wealth.²⁴ I use the average discount factor $\bar{\beta}$ to target mean wealth, the sensitivity of separation rates $\epsilon_{\beta}^{\delta}$ to target the mean difference in wealth by employment status, and the borrowing constraint \underline{z} to target the fraction with negative wealth. To match a 21% mean quarterly MPC out of an unanticipated \$500 rebate among households earning \$75,000 or less annually (the midpoint of the 12%-30% range reported by Parker et al. [2013]), I use the dispersion in discount factors Δ^{β} .²⁵ To clear the asset market at a targeted 2% annualized real interest rate, I use the government's bond position z^g . To match the 39% of unemployed receiving benefits computed by Chodorow-Reich and Karabarbounis [2016] over 1961Q1-2008Q2, I use the probability of UI receipt conditional on job loss ζ . To match the 60% ratio between the maximum statutory level of UI and the average wage (weighted across states),²⁶ I use the maximum level of benefits \overline{ui} . Finally, to match the dynamics of household income through unemployment using the SIPP in appendix C, I use ω_1 to target 24% lower income after job loss and ω_2 to target 45% lower income after UI exhaustion.

The second set of parameters target key features of unemployment and job search. Based on monthly data over 1995-2007 from the Bureau of Labor Statistics, I calculate a 5.0% average unemployment rate with 17% of the unemployed having duration greater than 26 weeks. I use the bargaining power of workers ϕ to target the overall unemployment rate and the duration dependence of match efficiency λ to target the fraction 0.17 of unemployed with duration greater than 6 months. Since much of my analysis will focus on policy affecting UI duration, I use the elasticity of workers' disutility from search ξ to target a micro-elasticity of unemployment duration to potential duration of benefits of 0.1, within the range surveyed by Schmieder and von Wachter [2016].²⁷ I use the sensitivity of separation rates ϵ_a^{δ} to match the negative relationship between EU probabilities and wages which I estimate using the Current Population Survey (CPS) over 2004-2007 in appendix C. Finally, I use the level of

²⁴I study an alternative calibration matching features of the liquid wealth distribution, rather than total wealth distribution, in appendix D. Since I find even larger effects of UI extensions on aggregate demand in that environment, I present the calibration to total wealth in the main text to be conservative.

²⁵The tax rebates under study in Parker et al. [2013] phased out rapidly above \$75,000 annual income among single earner households, and \$150,000 annual income among dual earner households. I use the former threshold to compute the comparable moment in my model so that, if anything, my calibration of MPCs is conservative. I focus on a \$500 rebate as in Kaplan and Violante [2014]. I convert both the \$500 rebate and \$75,000 annual income cutoff into model scale using average monthly household income from the 2004 SCF, and then compute MPCs by simulating agents over three months including and after receipt.

²⁶In the data, I first compute the ratio of the maximum statutory weekly benefit amount to average weekly wage in each state. I then average across states, weighting by UI claimants. All data comes from the U.S. Department of Labor for the first quarter of 2008.

²⁷As in the data, this micro-elasticity in the model is computed using the change in expected duration for a single unemployed agent able to receive longer UI benefits in an unchanged macroeconomic environment.

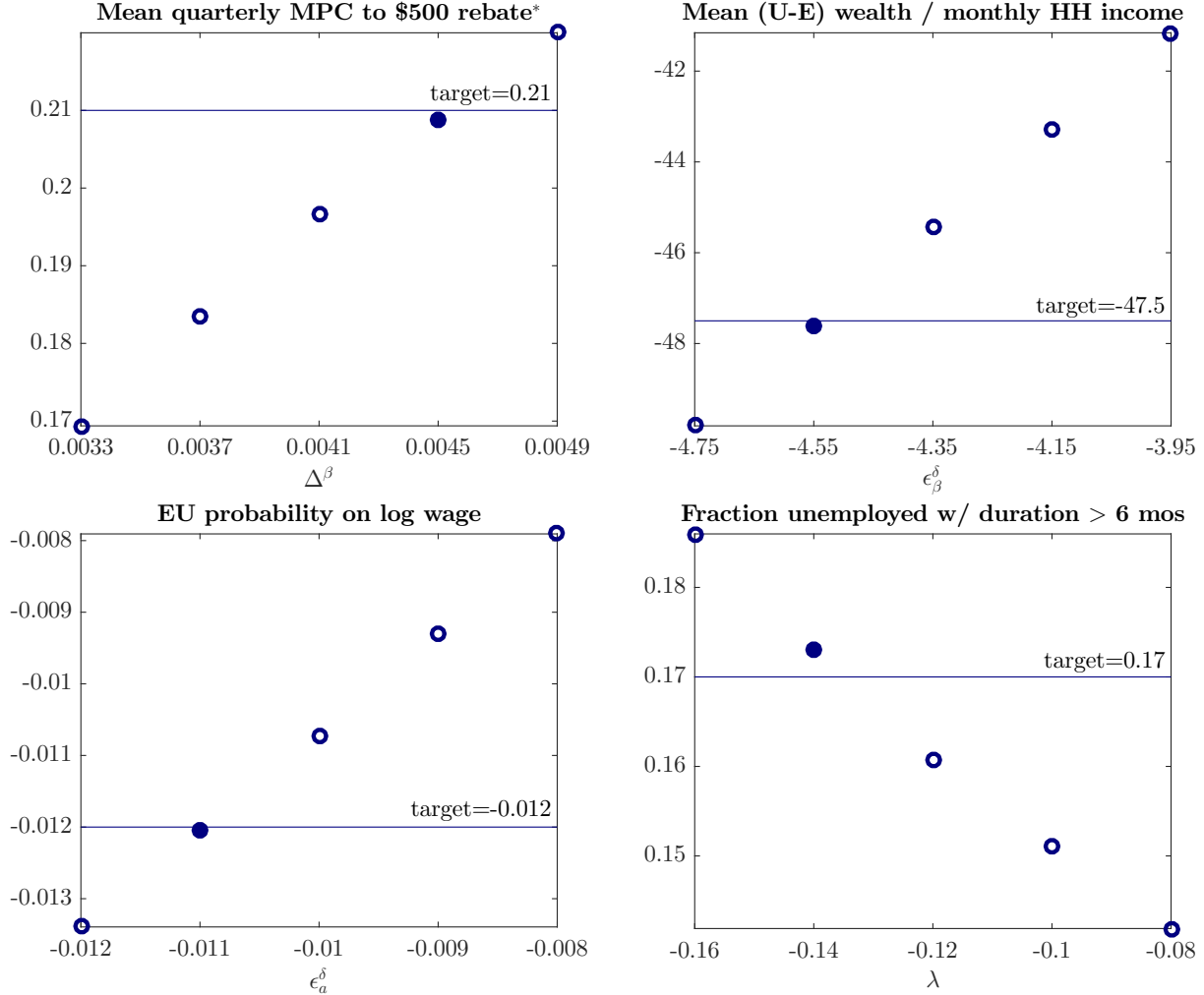


Figure 1: identification of selected parameters in stationary RCE

Note: each panel characterizes a given moment in the stationary RCE as I vary a single parameter, keeping all other parameters unchanged from their values in Table 1. The only exception to this is in the first panel where I vary Δ^β : in that case, I also vary $\bar{\beta}$ such that $\bar{\beta} + \Delta^\beta = 0.99785$, ensuring a bounded wealth distribution. In each panel, the horizontal line denotes the targeted value of the moment, and the shaded marker denotes the calibrated value of the parameter and resulting moment in the stationary RCE.

* Among households earning \leq \$75k ann. income (0.92 times average household income in model).

match efficiency \bar{m} to target 0.634 vacancies per unemployed worker reported by Hagedorn and Manovskii [2008], and the cost k to target the 10.8% of a recruiter's monthly wage used in hiring one worker reported by Silva and Toledo [2009].

Figure 1 illustrates the identification of several parameters deserving further comment. First, the convexity of MPCs by cash on hand implies that the average MPC is rising in discount factor heterogeneity. Consistent with Carroll et al. [2017], such heterogeneity is needed to generate an average MPC high enough to match the data provided that the average level of wealth is also consistent with the data. Second, separation rates must

fall with discount factors ($\epsilon_\beta^\delta < 0$) to match the mean difference in wealth between the unemployed and employed. Indeed, separation rates which fall only with productivity ($\epsilon_a^\delta < 0$) to match the observed relationship between EU probabilities and wages cannot rationalize this large difference in wealth by employment status.²⁸ Notably, this is consistent with evidence from the SIPP in appendix C that EU probabilities are negatively related to wealth even conditional on income.²⁹ Finally, match efficiencies must fall with duration ($\lambda < 0$) to match the observed fraction of unemployed agents who are long-term unemployed. Absent this decline in efficiency, job-finding rates rise with duration as agents search harder through unemployment, rendering the fraction of long-term unemployed counterfactually low.

4.2 Consumption, unemployment risk, and wealth: data vs. model

The model’s consistency with untargeted moments on consumption, unemployment risk, and wealth can give us further confidence in its predictions for the effects of redistribution. I assemble a broad set of related moments from a variety of data sources in Table 2. More detail on the estimates, including standard errors and sample descriptions, is in appendix C.

The model is first consistent with estimates of consumption sensitivities to income by employment status. Using the 2010 Survey of Household Income and Wealth (SHIW), unique in providing household heads’ employment status alongside (self-reported) MPCs, I find that the annual MPC out of unexpected, transitory income shocks is 25% higher for unemployed versus employed households.³⁰ The results of Ganong and Noel [2019] using data from JPMorgan Chase indicate that the consumption sensitivity to income is especially high among the long-term unemployed: at the month of UI exhaustion, spending falls by 20% of the reduction in household income. The calibrated model implies corresponding moments only a bit larger than the empirical counterparts.

The model is also consistent with untargeted moments regarding the incidence and effects of unemployment. Exploiting the panel structure of the SIPP, I estimate that one additional month of income in net worth is associated with a 0.02pp decrease in the probability that a household head becomes unemployed one year in the future. In the model, the same increase in net worth is associated with a 0.01pp decline in the probability of unemployment one year in the future. The consequences of unemployment for consumption have been studied by a

²⁸While the sensitivity of separation rates to discount factors is needed to match these features of the wealth distribution, note that even without such sensitivity, Table 5 demonstrates that MPCs rise with unemployment duration.

²⁹I do not use the EU-wealth relationship from the SIPP to calibrate the model because it is imprecisely estimated. But I show in the next subsection that the model is consistent with this untargeted moment.

³⁰While the horizon of spending was not explicitly asked, as Auclert [2019] notes, the consistency with the annual MPCs elicited in a later 2012 survey suggests that respondents had an annual horizon in mind.

Moment	Estimate	Source	Model
<i>Consumption sensitivities to income</i>			
Annual MPC unemp. - emp.	0.25	2010 SHIW	0.27
Δ spend. / Δ inc. at UI exhaustion	0.20	Ganong and Noel [2019]	0.27
<i>Incidence and consumption effects of unemployment</i>			
EU prob. on wealth / mo. HH income	-0.0002	2004 Panel SIPP	-0.0001
During UI receipt / pre job loss	0.91	Ganong and Noel [2019]	0.85
After UI exhaustion / pre job loss	0.80	Ganong and Noel [2019]	0.77
<i>Aggregate consumption shares by wealth</i>			
Quintile 5 (highest)	37.2%	Krueger et al. [2016a]	33.5%
Quintile 4	22.4%	Krueger et al. [2016a]	26.6%
Quintile 3	16.8%	Krueger et al. [2016a]	21.1%
Quintile 2	12.4%	Krueger et al. [2016a]	11.2%
Quintile 1 (lowest)	11.3%	Krueger et al. [2016a]	7.7%

Table 2: untargeted moments on MPCs, unemployment risk, and consumption

Note: further details on the estimates are provided in appendix C. The model moments are computed in the same way as the estimates except for the annual MPC, which is self-reported in the data but computed in the model for each agent using the change in average consumption over the year following an unanticipated rebate equal to average economy-wide monthly income.

literature beginning with Gruber [1997] using progressively richer data. Using the JPMorgan Chase panel, Ganong and Noel [2019] estimate that the spending of UI exhaustees falls by 9% during UI receipt and a further 11% after exhaustion. As in their partial equilibrium analysis, agents in the model reduce consumption by more in anticipation of exhaustion relative to what we observe in the data. However, the model more closely matches observed consumption after exhaustion, more important for the experiments which follow because of my primary focus on changes to UI benefit duration affecting the long-term unemployed.

The model is finally consistent with the relative importance of consumption among households by wealth. Krueger et al. [2016a] sort households in the 2007 PSID into quintiles based on their total level of net worth, and then compute the share of aggregate consumption by households in each group. If anything, the model slightly undershoots the share of aggregate consumption accounted for by households in the bottom two wealth quintiles. Since (as I show in the next subsection) MPCs are strongly associated with wealth, this implies that the model does not overstate the importance of high-MPC households in aggregate consumption.

4.3 Long-term unemployed as a “tag” for high MPCs

The structural approach taken in this paper illustrates why, to borrow a phrase from Akerlof [1978], the long-term unemployed are an especially good “tag” for high MPCs: low wealth, and low temporary income relative to permanent income.

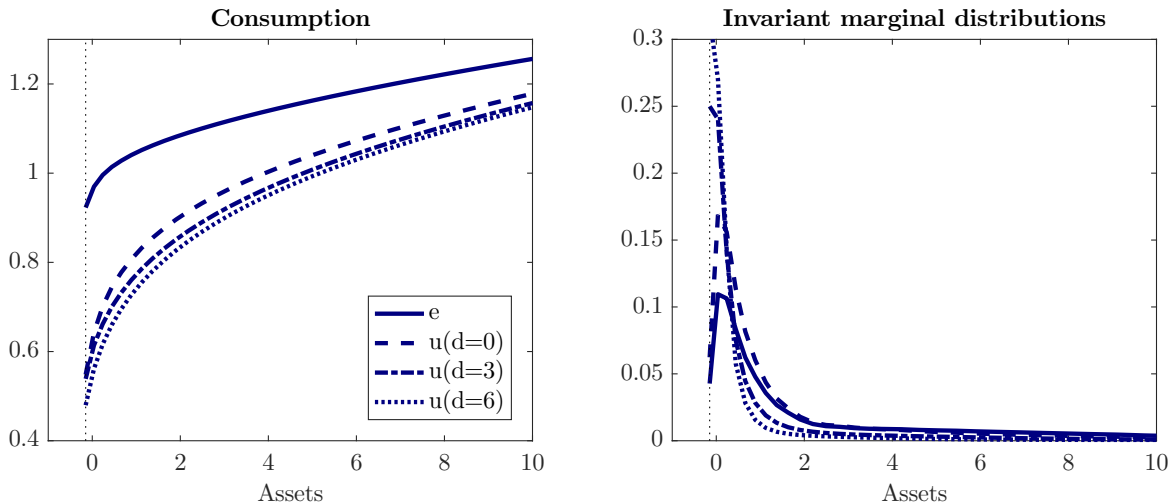


Figure 2: consumption policy functions and marginal wealth distributions in stationary RCE

Note: e denotes employed, u denotes unemployed, and d denotes the number of months an agent has been unemployed in the current spell (not including the current month). The policy functions in the first panel average over all other state variables using the marginal distributions conditional on employment status. The dashed vertical line in both panels marks the borrowing constraint.

This is evident from agents' consumption policy functions and the marginal distributions over wealth, depicted in Figure 2 for employed agents and unemployed agents in their first month of unemployment ($d = 0$), in their fourth month ($d = 3$), and just after the expiration of benefits ($d = 6$), averaging over all other state variables. The marginal distributions are consistent with the unemployed being drawn disproportionately from the pool of low wealth agents and then further decumulating assets through the spell, a temporary shock. The policy functions are consistent with the temporary income losses associated with unemployment leading agents, even conditional on wealth, to have lower consumption and higher sensitivities to cash on hand. Taken together, Table 3 illustrates that the long-term unemployed have a quarterly MPC out of an unexpected rebate of \$500 which is over three times that of the employed. In fact, the long-term unemployed have a quarterly MPC which is more than one and a half times that of the bottom quintile of households by wealth.³¹

³¹The MPCs by wealth are further useful in validating the model given the consistency between the model-implied pattern of MPCs declining in wealth and available evidence. For instance, Broda and Parker [2014] find that the roughly half of households reporting less than two months of income available in liquid assets have a quarterly MPC at least double that of households reporting sufficient liquidity. The distinction between liquid and illiquid wealth is of course one that my baseline model does not capture, though I provide an alternative calibration to the liquid wealth distribution in appendix D.

Group	Mean quarterly MPC
Overall	0.17
<i>By wealth</i>	
Quintile 5 (highest)	0.01
Quintile 4	0.05
Quintile 3	0.17
Quintile 2	0.24
Quintile 1 (lowest)	0.39
<i>By employment status</i>	
Employed	0.16
Unemployed	0.42
Short-term ($d \in \{0, 1, 2\}$)	0.36
Medium-term ($d \in \{3, 4, 5\}$)	0.47
Long-term ($d \geq 6$)	0.59

Table 3: model-generated quarterly MPC to \$500 rebate

Note: the \$500 rebate is first translated into model scale using average monthly household income of \$6,761 from the 2004 SCF. The MPC for each agent is then computed as the change in average consumption over the three months after an unanticipated receipt of this rebate in a given month.

5 Impulse responses to UI shocks

I now study UI policy starting from the stationary RCE. Consistent with the earlier analytical results, UI extensions are contractionary absent nominal rigidity but are expansionary given nominal rigidity and monetary policy which does not raise the interest rate. The latter stimulus is more pronounced when MPCs rise more sharply by duration of unemployment or the extensions last for a longer horizon.

5.1 Roles of nominal rigidity and the monetary policy response

I start with an unanticipated extension of UI duration by three months and lasting one year. This subsection clarifies the key roles of nominal rigidity and the monetary policy response in shaping the resulting macroeconomic effects.

I assume for now $\iota = 1$, so that real wages do not change in response to the shock, and all other macroeconomic parameters are fixed, such as z^g , so that changes in UI are fully financed by contemporaneous changes in taxes. I explore the sensitivity to alternative changes in UI policy and parameters in results which follow.

Since unanticipated shocks lead to a change in the value of firm equity, we must take a stand on the composition of household portfolios at $t = 0$. As described in appendix C, I

	Flex prices	Sticky prices	Sticky prices + fixed r	Sticky prices + fixed i
Output multiplier	-0.5	0.6	1.1	1.1
Avg change in unemp. rate	+0.02pp	-0.01pp	-0.02pp	-0.02pp

Table 4: baseline effects of UI

Note: the panels summarize the effects of a one-year extension of UI duration by three months starting from the stationary RCE under flexible prices, sticky prices and an active Taylor rule, sticky prices and a constant real interest rate for 18 months, and sticky prices and a constant nominal interest rate for 18 months. The output multiplier is defined in (30). The average change in unemployment is computed over the year of extended benefits.

use empirical patterns in household portfolios by wealth to initialize these portfolios.³²

I use a partial equilibrium / general equilibrium decomposition to understand the results. I compute the partial equilibrium impulse using agents' re-optimized consumption and search behavior in response to the UI shock, holding fixed the initial value of firm equity, the path of labor market tightness, and the path of real interest rates, and only updating taxes to balance the government budget given the change in worker search effort and thus employment. The resulting impulse is consistent with partial equilibrium analyses in public finance, as in Baily [1978] and Chetty [2006], which accounts for the fiscal externality associated with changes in search. I then characterize the full general equilibrium response accounting for the endogenous adjustment of firm equity, tightness, and real rates.

The partial equilibrium impulse to desired consumption resulting from extended UI reflects the effects of MPC heterogeneity, lower precautionary saving, and moral hazard in search. This impulse is the thin solid line in the first panel of Figure 3. The reallocation of desired consumption from the future to the present is consistent with UI redistributing to higher MPC households and reducing the incentive for all households to precautionary save. Because of moral hazard in search, the change in desired consumption is negative in net present value terms as more households stay unemployed with more generous UI.

Accounting for the responses in tightness and interest rates in general equilibrium, the UI extension leads to lower output and employment under flexible prices. The real interest rate rises to equilibrate the asset (and goods) market, as shown by the thick solid line in the second panel of Figure 3. This undoes the effects of more generous UI on households' desired consumption-savings plan and, consistent with Hall [2017], reduces vacancy creation by raising the discount rate applied by firms on the surplus from continuing matches. Together with lower worker search effort due to moral hazard, the net effect on aggregate consumption and

³²The computational algorithm used to characterize each of the transitional dynamics in this section builds on Guerrieri and Lorenzoni [2017] and Auclert et al. [2021] and is discussed further in appendix F.

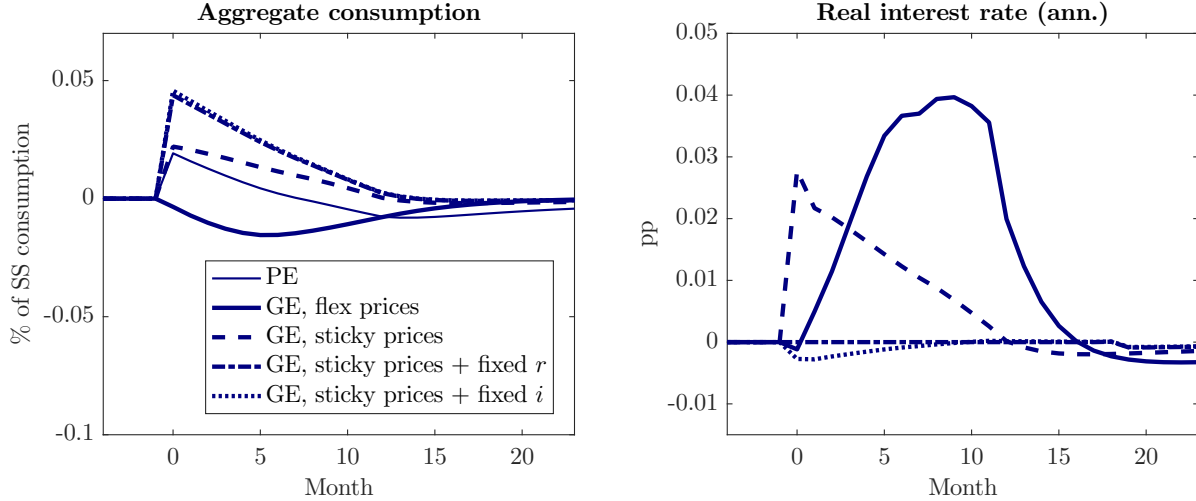


Figure 3: effects of UI starting from steady-state

Note: the panels describe the effects of a one-year extension of UI duration by three months starting from the stationary RCE with no other macroeconomic shocks. In the left panel, the partial equilibrium impulse describes the change in aggregate consumption after agents re-optimize consumption and search given the change in UI benefits and taxes (where the latter balances the government budget), holding fixed the initial value of firm equity, the path of tightness, and the path of real interest rates. The general equilibrium impulse describes the change in aggregate consumption (which equals output) accounting for the final response of firm equity, tightness, and real interest rates.

thus output in the first panel of Figure 3 is negative.³³ The first row of Table 4 summarizes the effect on output by the contemporaneous multiplier

$$\text{output multiplier} \equiv \frac{\sum_{t=0}^{11} \Delta \text{output}_t}{\sum_{t=0}^{11} \Delta \text{UI payments}_t}, \quad (30)$$

where the denominator uses the initial distribution of agents across the state space. The multiplier is -0.5, with the unemployment rate rising by 0.02pp in the year of extended UI.

With nominal rigidity but a standard Taylor rule, real interest rates rise — but not as much as above — in response to UI extensions. I set the adjustment cost on prices to $\psi = 360$, so that (given an elasticity of substitution across retailer varieties of $\epsilon = 6$) the log-linear New Keynesian Phillips curve has slope on marginal cost $\frac{\epsilon-1}{\psi} = 0.014$. This is equivalent to the log-linear Phillips curve in a model of Calvo pricing with expected price duration 9 months, consistent with the range of estimates surveyed in Nakamura and Steinsson [2013]. I set the coefficients in (29) to $\phi^\Pi = 1.5$ and $\phi^y = 1/12$, following much of the literature since Taylor [1999]. Monetary policy tightens in response to the increase in UI such that the real interest rate, shown by the dashed line in the second panel of Figure 3, rises. Because

³³Appendix D provides the impulse responses of equilibrium tightness, search, and other variables.

	Baseline	Identical δ
Quarterly MPC, employed	0.16	0.17
Quarterly MPC, ST unemployed	0.36	0.27
Quarterly MPC, MT unemployed	0.47	0.35
Quarterly MPC, LT unemployed	0.59	0.43
Output multiplier	1.1	0.8
Avg change in unemp. rate	-0.02pp	-0.03pp

Table 5: sensitivity of effects of UI under sticky prices and fixed i

Note: the counterfactual economy sets $\epsilon_a^\delta = \epsilon_\beta^\delta = 0$ and re-calibrates all other parameters to match the same moments as in the baseline, as described in appendix D. In all cases the quarterly MPC is computed for an unexpected \$500 rebate.

real interest rates do not rise by as much as in the flexible price case, the resulting output multiplier becomes positive at 0.6.

Eliminating the rise in the real interest rate, the expansionary effects of UI extensions nearly double. Suppose first that monetary policy maintains a constant real interest rate for 18 months, after which it follows the Taylor rule. The left panel of Figure 3 demonstrates that aggregate consumption rises more substantially, and the third column of Table 4 indicates that the UI extension now has an output multiplier of 1.1, generating an average decline in the unemployment rate of 0.02pp. If monetary policy instead maintains a constant nominal interest rate for 18 months before reverting to the Taylor rule, the left panel of Figure 3 demonstrates that the increase in consumption is even higher, and the right panel demonstrates that this is because the real interest rate falls due to an increase in inflation expectations at a constant nominal rate. Nonetheless, as both this figure and the last two columns of Table 4 make clear, the latter mechanism is small in these baseline results.

5.2 Roles of MPC heterogeneity and precautionary saving

MPC heterogeneity and reduced precautionary saving drive the aggregate effects of UI extensions when monetary policy is constrained.

I first study an alternative calibration of the model eliminating heterogeneity in separation rates, illustrating the importance of heterogeneity in MPCs. With $\epsilon_a^\delta = \epsilon_\beta^\delta = 0$ and other parameters re-calibrated to match the same targets as the baseline as described in appendix D, the first panel of Table 5 indicates that the stationary RCE features a smaller difference in MPCs between the unemployed and employed. The second panel of Table 5 indicates that the output multiplier from a three-month extension of UI is diminished.³⁴ These results

³⁴The effect on the unemployment rate is slightly amplified, however. This is because the average productivity of the employed is lower than in the baseline, so a larger change in employment is needed to achieve

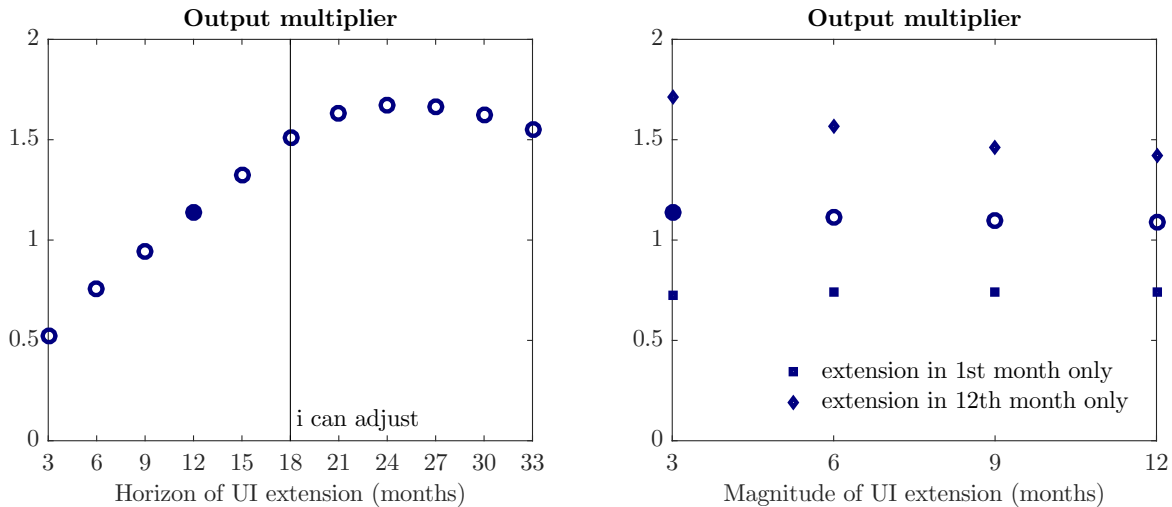


Figure 4: sensitivity to horizon and magnitude given sticky prices and fixed i

Note: the left panel depicts the output multipliers corresponding to different UI extension horizons, in each case extended from 6 to 9 months. In all cases the output multiplier is computed over the horizon of the extension. The right panel depicts the output multipliers corresponding to different UI extension magnitudes, in place for one year (circles); in the 1st month of the simulation only (small squares); and in the 12th month of the simulation only (small diamonds). In all cases the output multiplier is computed over a fixed 12-month horizon. Shaded markers in both panels depict the baseline three-month extension of UI for one year.

indicate that heterogeneity in the incidence of unemployment, which Figure 1 demonstrated was needed to rationalize observed variation in EU flows by income and differences in wealth conditional on these flows, plays a key role in the macroeconomic effects of UI by determining the MPCs of those receiving the transfers.

Returning to focus on the baseline calibration alone, I next vary the number of calendar months during which extended benefits are provided, illustrating the importance of precautionary saving. The first panel of Figure 4 plots the output multiplier associated with extended UI over horizons of 3 to 33 months, holding fixed the three-month duration by which benefits are extended. Over the period in which monetary policy is accommodative (18 months), the stimulus grows as the announced horizon increases. This is consistent with the dynamic amplification of the stimulus from reduced precautionary saving, higher aggregate demand, and lower unemployment risk.³⁵ Of course, once UI extensions are expected to persist beyond the period of a constant nominal interest rate, the tightening which accompanies the extensions eventually renders them less expansionary.

Varying the number of months of unemployment by which UI is extended illustrates

a particular change in output.

³⁵Output multipliers rising with the horizon of a spending shock can also rise from the inflation expectations channel, but that is not dominant here: almost the same multipliers are obtained if monetary policy maintains a constant real interest rate rather than nominal interest rate over the first 18 months.

	Baseline	Lower real wage rigidity	Higher disincentive elasticity
Flexible prices			
Avg change in real rate (ann.)	+0.03pp	+0.04pp	+0.01pp
Output multiplier	-0.5	-5.2	-1.8
Avg change in unemp. rate	+0.02pp	+0.13pp	+0.07pp
Sticky prices			
Avg change in real rate (ann.)	+0.01pp	+0.02pp	+0.02pp
Output multiplier	0.6	0.6	0.6
Avg change in unemp. rate	-0.01pp	-0.01pp	+0.00pp
Sticky prices + fixed i			
Avg change in real rate (ann.)	-0.00pp	-0.01pp	-0.00pp
Output multiplier	1.1	2.2	1.3
Avg change in unemp. rate	-0.02pp	-0.05pp	-0.02pp

Table 6: sensitivity of effects of UI to supply-side responses

Note: in all cases the changes in the annualized interest rate, output, and unemployment rate are computed over the year of extended benefits.

an interesting tension between the stimulus via heterogeneous MPCs and precautionary saving.³⁶ The right panel of Figure 4 plots the output multiplier associated with duration extensions by 3 to 12 months, holding fixed a one-year horizon over which benefits are extended. It further plots the output multiplier associated with such extensions at $t = 0$ and $t = 11$ alone (both announced at $t = 0$). On the one hand, the marginal recipients of transfers have higher MPCs as UI is extended by a greater magnitude, explaining why the output multiplier from UI extensions in the 1st month of the simulation alone rise. On the other hand, a smaller fraction of agents are affected by the policy change, reducing the precautionary saving effects of UI and explaining why the output multiplier from UI extensions in the 12th month of the simulation alone fall. Because these forces offset, the overall output multiplier from a one-year extension of benefits is remarkably stable with the magnitude of the extension.

5.3 Sensitivity to supply-side responses

Larger supply-side responses only amplify the stimulus from UI when monetary policy is constrained, in contrast to the results with flexible prices or an active Taylor rule.

This is first evident in the case of a lower degree of real wage rigidity. In the second column

³⁶I find a similar tension when considering an alternative calibration of the coefficient of relative risk aversion σ : raising σ raises agents' prudence, but compresses the distribution of MPCs by employment status, such that the effects of UI extensions on output are roughly unchanged from the baseline calibration.

of Table 6, I lower ι from its baseline value of 1 to 0.9. In the usual way, this implies that real wages rise with UI generosity, as this raises workers’ outside option in the Nash bargain. Under flexible prices, this increase in wages leads to a reduction in firm profits and thus firm vacancies, generating a large negative multiplier. With sticky prices, the Taylor rule similarly calls for a larger rise in the nominal and thus real interest rate, though it remains dampened versus flexible prices. However, with sticky prices and constrained monetary policy, these results are reversed. The increase in real wages directly increases firms’ marginal costs and generates inflation, reducing the ex-ante real interest rate when the nominal interest rate is held fixed. Hence, the stimulus is amplified relative to the baseline.

This mechanism also applies to a larger micro disincentive effect. In the third column of Table 6, I re-calibrate the steady-state to target a micro elasticity of unemployment duration to potential benefit duration of 0.4, exceeding the baseline target of 0.1 and at the high end of U.S. estimates summarized in Schmieder and von Wachter [2016].³⁷ The larger disincentive elasticity translates into a larger contractionary effect of UI extensions under flexible prices. In contrast, the stimulus with sticky prices and constrained monetary policy is amplified.

5.4 Other features of UI policy and fiscal policy

In appendix D, I conduct several additional experiments which further elucidate the effects of UI extensions in the model given sticky prices and constraints on monetary policy. I first consider an increase in UI eligibility/take-up, which amplifies the stimulus by expanding the scale of transfers. I then consider deficit-financed increases in UI duration, which amplifies the stimulus because the model is non-Ricardian. I then compare the effects of raising the replacement rate to extending UI duration, which underscores that duration extensions have a larger multiplier because long-term unemployment is a “tag” for particularly high MPCs.

Finally, in appendix D I study the effects of conventional government purchases, rather than UI (transfers). I augment the model to feature government spending on final goods which enters separably into households’ utility. The model-implied fiscal multiplier (defined analogously to (30)) ranges between 0.6-1.4 and is on the higher end of that range when monetary policy maintains a constant nominal interest rate (as at the zero lower bound) and government spending is deficit-financed. These magnitudes are in line with estimates of the fiscal multiplier exploiting time-series and cross-sectional variation as surveyed by Ramey [2011] and Chodorow-Reich [2019], respectively. This lends further credibility to my model’s implications for the general equilibrium effects of UI.

³⁷The re-calibrated parameters are again summarized in appendix D.

6 Evaluation of policy during Great Recession

Armed with these insights from steady-state impulse responses, I now evaluate the effects of UI policy during the Great Recession. The goal is not to provide a complete account of the Great Recession, but instead to quantify the effects of UI extensions in a large downturn of this kind. I calibrate a sequence of shocks to agents' discount factors to replicate the path of unemployment over 2008-2014 given the observed extensions to UI. I compare the observed path of unemployment to counterfactual economies without the observed extensions or without a zero lower bound. I find that the unemployment rate would have been as much as 0.4pp higher were it not for the benefit extensions, and the binding zero lower bound is essential for this result. The model-implied stimulus is consistent with the upper end of estimates of stimulus in the empirical literature.

6.1 UI policy during Great Recession

The Emergency Unemployment Compensation Act of 2008 (EUC08) was legislated by the U.S. Congress in June 30, 2008 to provide a federally-financed extension of UI across U.S. states through June 2009. Subsequent extensions and re-authorizations, together with the triggering of the Extended Benefits (EB) program, meant that UI duration exceeded 26 weeks in most states through 2013, reaching 99 weeks in some states.

Based on the Chronology of Federal Unemployment Compensation Laws and median UI benefits by state reported by Farber and Valetta [2013], I simulate 13 shocks to UI policy summarized in Table 7. Each shock is defined by its month of occurrence and the revised path of UI duration from that month onwards. Twelve shocks correspond to new extensions or re-authorizations of EUC08. I date each based on when the legislation was passed by the U.S. Congress, and I define the revised path of UI duration based on the maximum weeks of UI allowed by each piece of legislation.³⁸ One shock corresponds to the triggering of EB. I date it based on when EB benefits began for the median U.S. state, and I assume for simplicity that EB benefits are reauthorized at the same time and over the same horizon as EUC08 benefits in the subsequent months (until the last EB benefits were paid in August 2012). In all cases, I assume 4.5 weeks per month and round to the nearest month to obtain UI durations consistent with the model frequency. Figure 5 shows that the realized path of UI duration in my model corresponds closely to the median UI duration across U.S. states.

³⁸The exceptions to the latter are shocks 12 and 13, in which case (from September 2012 onwards) I adjust downward the expected UI duration to match the median realized UI duration across states. As states started letting extended benefits expire or no longer met the necessary "lookback" provisions, the maximum available weeks of UI exceeded the realized measure.

	Date	Revised UI extensions	Relevant legislation/program
1	7/2008	3 months through 6/2009	P.L. 110-252 (EUC08 Tier 1 announced)
2	12/2008	7 months through 11/2009	P.L. 110-449 (EUC08 Tier 2 announced)
3	3/2009	7 months through 5/2010	P.L. 111-5
4	5/2009	12 months through 5/2010	EB starts for median state
5	11/2009	16 months through 5/2010	P.L. 111-92 (EUC08 Tiers 3, 4 announced)
6	1/2010	16 months through 7/2010	P.L. 111-118
7	3/2010	16 months through 8/2010	P.L. 111-144
8	4/2010	16 months through 10/2010	P.L. 111-157
9	8/2010	16 months through 4/2011	P.L. 111-205
10	1/2011	16 months through 5/2012	P.L. 111-312
11	1/2012	16 months through 8/2012	P.L. 112-78
12	3/2012	16 months through 5/2012, 14 months through 8/2012, 8 months through 12/2012	P.L. 112-96
13	1/2013	8 months through 12/2013	P.L. 112-240

Table 7: UI shocks simulated in model based on EUC08 and EB extensions

Note: for all shocks corresponding to EUC08 legislations, if legislation was passed in the first half of the month, it is dated as that month; if it was passed in the second half of the month, it is dated as the following month. UI duration is quoted in number of weeks in practice, so I assume 4.5 weeks per month and round to the nearest month. See text for additional description of how each shock is classified.

My implementation tries to strike a balance between realism and parsimony.³⁹ Importantly, by simulating 13 distinct shocks to UI policy, I capture the fact that the extended UI benefits over 2008-13 were not characterized by perfect foresight in 2008, and instead evolved in real time based on developments in the U.S. labor market and U.S. Congress. At the same time, I abstract from the state-contingency involved in some of the extensions, namely the second through fourth tiers of the EUC08 program as well as the EB program, which depended on the evolution of the unemployment rate in each state. I further abstract from the increase in U.S. government borrowing during this period, instead making the (conservative) assumption that the benefits are financed via contemporaneous taxes on the employed.

6.2 Model versus data

I then simulate a sequence of shocks to agents' average discount factor $\bar{\beta}_t$ to match the observed path of unemployment from May 2008 through December 2014, conditional on the aforementioned shocks to UI and a value of real wage rigidity ι calibrated to match the

³⁹I also view it as conservative: since the output multiplier rises with the horizon of UI extensions when monetary policy maintains a constant nominal interest rate (Figure 4), I expect that I would find even more stimulative effects of the UI extensions if agents were not surprised by future reauthorizations and had instead expected them to continue so long as monetary policy was at the zero lower bound.

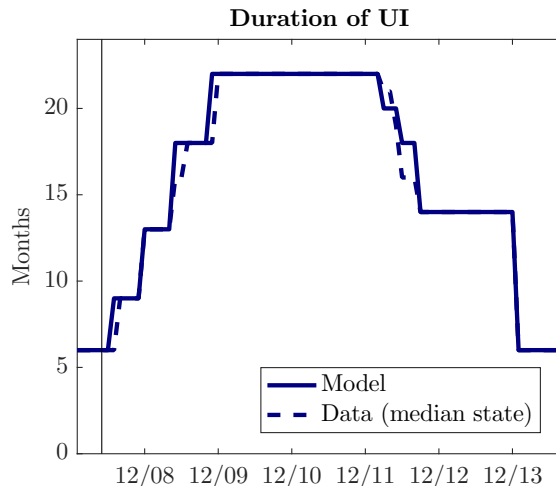


Figure 5: realized UI duration in model versus data

Note: vertical line corresponds to initial date of simulation, before which model is in stationary RCE. At any given month of simulation, agents’ expectations regarding future UI duration are described in Table 7. Data is from Farber and Valetta [2013], who report weeks of UI by state. I assume 4.5 weeks per month and round to the nearest month.

dynamics of prices during this period. I assume that the average discount factor follows the AR(1) process

$$\bar{\beta}_t = (1 - \rho^{\bar{\beta}})\bar{\beta} + \rho^{\bar{\beta}}(\bar{\beta}_{t-1} - \bar{\beta}) + \epsilon_t^{\bar{\beta}}.$$

and I set $\rho^{\bar{\beta}} = 0.95$.⁴⁰ As in section 5, I assume price adjustment costs $\psi = 360$ (implying a Calvo-equivalent frequency of price adjustment of 9 months). Monetary policy follows the standard Taylor rule subject to zero lower bound in (29) with $\phi^\Pi = 1.5$ and $\phi^y = 1/12$.

I view discount factor shocks as a way to capture changes in financial conditions which change households’ desired (or required) saving.⁴¹ A shock to the credit constraint \underline{z} delivers the same comovements.⁴² In appendix E I also characterize the effects of productivity, separation rate, and match efficiency shocks, which imply distinct comovements from discount factor or credit constraint shocks. In particular, these “supply” shocks generate a rise in unemployment together with an increase in inflation. Later in this section, I thus consider

⁴⁰I find that the assumed value of $\rho^{\bar{\beta}}$ has little effect on the results which follow; it simply implies a different magnitude of shocks to rationalize the observed path of unemployment.

⁴¹A large literature has tried to isolate the driving forces behind the Great Recession. This is of course not the contribution of my paper. The ability of discount factor shocks to rationalize the empirical comovements in my model is consistent with the many papers finding a key role for negative demand shocks of this sort in estimated DSGE models of the Great Recession, such as Christiano et al. [2015] and Del Negro et al. [2015].

⁴²However, it is quantitatively problematic to match the rapid rise in aggregate unemployment early in the Great Recession via shocks to \underline{z} alone: because the credit constraint shock has little effect on high wealth households, the required size of shocks to \underline{z} would imply some agents have negative consumption. It is for this reason that I focus on discount factor shocks.

the sensitivity of my findings to an alternative calibration featuring both discount factor and separation rate shocks; in my baseline calibration, however, I focus on discount factor shocks alone for parsimony.

The calibration proceeds as follows. For a grid of values of real wage rigidity ι , I calibrate a sequence of shocks $\{\epsilon_t^{\bar{\beta}}\}$ to match unemployment in the data. I choose the unemployment rate as my calibration target so that the model-implied scale of UI payments is as consistent with the data as possible. Given a sequence of shocks $\{\epsilon_t^{\bar{\beta}}\}$ calibrated in this way for each value of ι , I then choose ι to minimize the sum of squared differences between the final goods price index in model and data. I use the final goods price index as the key nominal calibration target because expected inflation is what enters into agents' Euler equations and thus affects aggregate demand while monetary policy is at the zero lower bound.⁴³

The computational heart of this algorithm is in calibrating the sequence of discount factor of shocks, conditional on any ι . This proceeds iteratively: conditional on the distribution of agents over the state space at $t - 1$, the calibrated $\bar{\beta}_{t-1}$, and the expected future path of UI from t onwards, I calibrate $\epsilon_t^{\bar{\beta}}$ so that in the perfect foresight equilibrium from period t onwards, the unemployment rate in period t is consistent with the data in the corresponding period.⁴⁴ I proceed to period $t + 1$ and repeat the steps. Because I re-solve for equilibrium policies, prices, and quantities at each step of this algorithm, I respect the important nonlinearities induced by the zero lower bound. To my knowledge, the solution of such a heterogeneous agent model as it gradually travels “far” from the initial steady-state, with an endogenously time-varying duration at the zero lower bound, is novel to the literature.⁴⁵

This algorithm implies $\iota = 0.94$, a high degree of real wage rigidity, and the set of discount factor shocks $\epsilon_t^{\bar{\beta}}$ depicted in the first panel of Figure 6. As is evident, the model requires positive shocks to rationalize the rise and persistence in unemployment in the early part of the sample period, and negative shocks to rationalize its decline toward the end. The simulated unemployment rate is depicted in the second panel, almost identical to the data.

Figure 7 compares other model-generated time-series with the data, all of which are untargeted in the calibration except the final goods price index.⁴⁶ The first panel demon-

⁴³I use the core PCE as the data counterpart of final goods prices because the PCE index is the one targeted by the FOMC, and the core index in particular is typically viewed as a more reliable measure of inflation because it excludes volatile food and energy prices.

⁴⁴I again use the empirical patterns in household portfolios described in appendix C to revalue households' relative wealth given the change in the price of equity on impact of a shock at t .

⁴⁵What makes this possible is a simple algorithm to dynamically update the Jacobian used to solve the sequence of equilibrium conditions as the simulation proceeds. I describe this further in appendix F.

⁴⁶The data sources are as follows. The nominal interest rate is the effective funds rate reported by the Federal Reserve Board, rounded down to the nearest *25bp*. Total non-farm job openings, unemployed persons, unemployment by duration, and average hourly earnings of all private employees are reported by the Bureau of Labor Statistics (BLS). The PCE index excluding food and energy is from the Bureau of

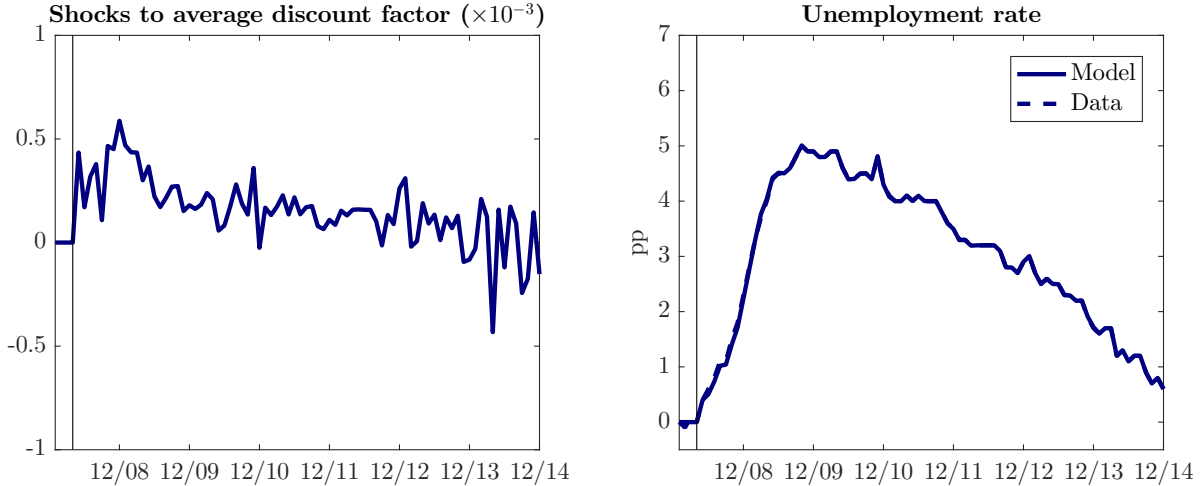


Figure 6: discount factor shocks and unemployment

Note: average discount factor assumed to follow an AR(1) process with persistence 0.95. Shocks are chosen each period so that, together with the shocks to UI described in Table 7, unemployment in model matches that in data. Unemployment series is displayed in deviations from steady-state (for model) and April 2008 (in data).

states that the model generates a binding zero lower bound from late 2008 (as in the data) through late 2013 (earlier than “lift-off” in the data). The second and third panels plot vacancies relative to the measure of unemployed and the fraction of the unemployed which are long-term unemployed; the model generates substantial movements in both variables, albeit of a smaller magnitude than in the data. The fourth panel plots consumption per capita: the model and data are quite consistent through mid-2011, though consumption per capita recovers in the model (consistent with unemployment) whereas in the data it falls further below trend.⁴⁷ The fifth and sixth panels focus on nominal wages and prices; the model generates a decline in both quite consistent with the data.⁴⁸ Notably, the high degree of real wage rigidity ensures that nominal prices only fall by less than $3pp$ below trend by 2014 — amounting to less than $0.5pp$ below trend per year — despite the substantial rise in unemployment during the Great Recession.⁴⁹

Figure 8 plots an important endogenous outcome in the simulation: the horizon over

Economic Analysis (BEA). Consumption per capita is nominal consumption of non-durables plus services (BEA), divided by the product of the GDP deflator (BEA) and total civilian population over 16 (BLS), linearly interpolated from a quarterly to monthly frequency.

⁴⁷I expect that a change in trend growth could rationalize the model with the data in this dimension.

⁴⁸Interestingly, nominal wages rise in the first few months of the simulation, as in the data. In the model, this occurs because of selection: the decline in job-finding rates disproportionately affects low-productivity workers who are overrepresented among the unemployed.

⁴⁹In this way, the model rationalizes the “missing disinflation” during this period (see, e.g., Harding et al. [2021] and citations therein).

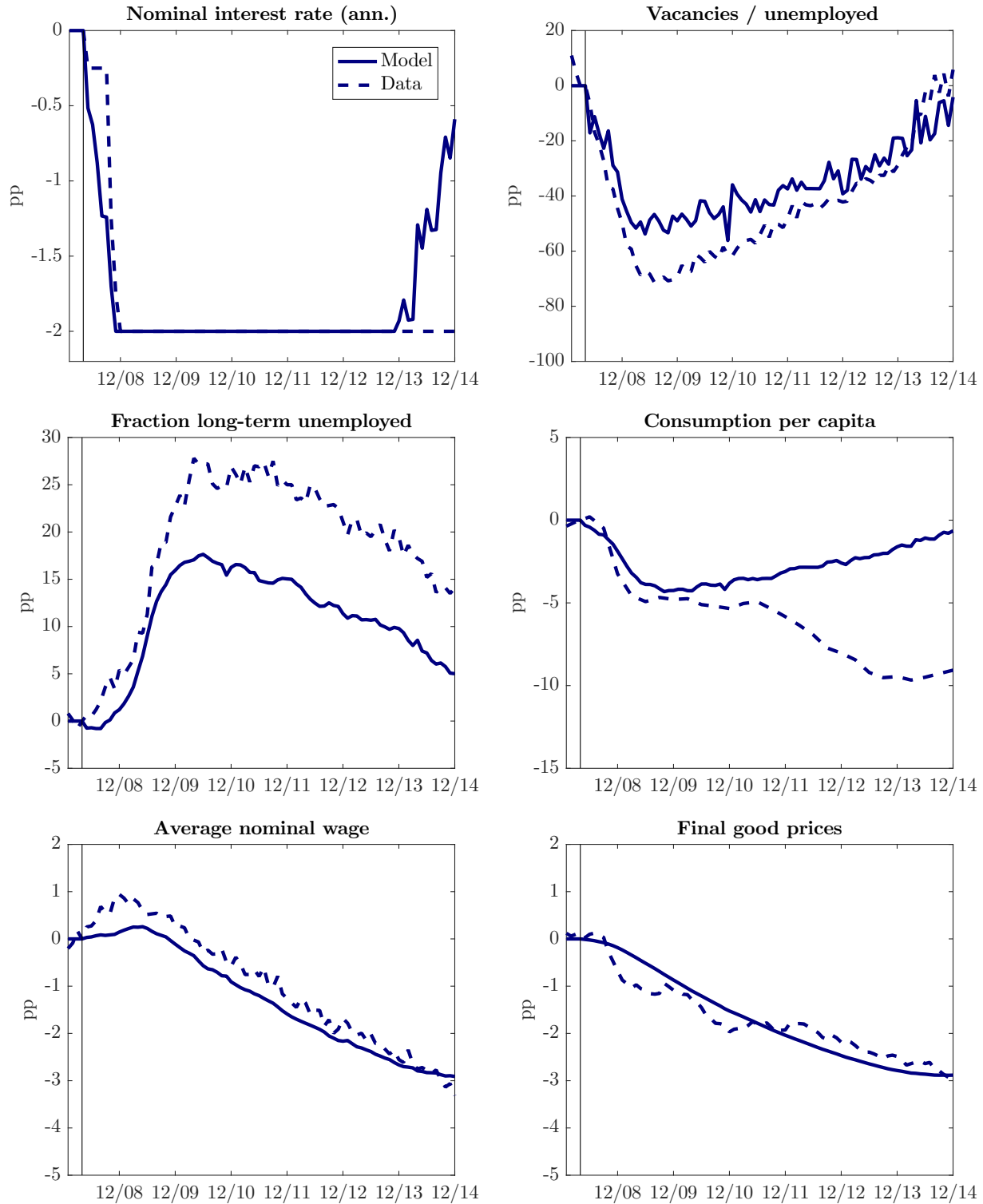


Figure 7: untargeted macro time-series

Note: series displayed in deviations from steady-state (for model) and April 2008 (in data). In the data, consumption per capita, the nominal wage index, and the nominal price index are detrended at their average growth rates over 1990-2019 (1.7%, 2.6%, and 1.9% per year, respectively).

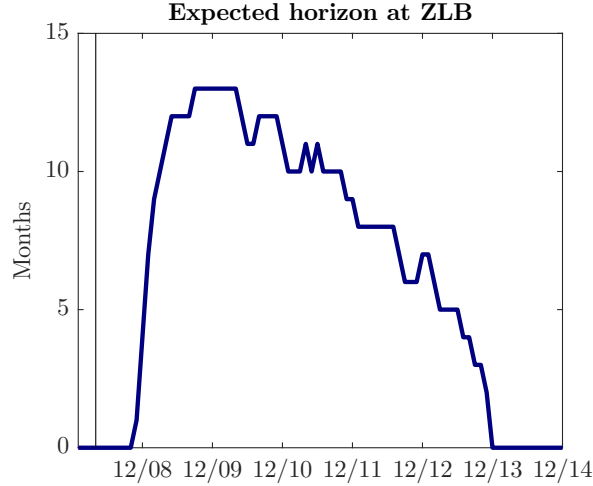


Figure 8: expected horizon at the zero lower bound

Note: model hits the zero lower bound in the first month of the simulation, as depicted in Figure 7.

which agents expect the zero lower bound to bind, which evolves as agents (rationally) forecast the economy’s response to shocks. Through August 2011, the model-implied expectations of roughly one year at the zero lower bound are quite consistent with actual expectations. For instance, as summarized by Swanson and Williams [2014], the Blue Chip survey of forecasters implied an expected number of quarters at the zero lower bound between 2-5 quarters from January 2009 through August 2011. Yield curve data, interpreted for instance through the lens of a shadow rate term structure model as in Bauer and Rudebusch [2016], similarly imply that the zero lower bound was expected to bind for around one year over this same period. In August 2011, the Federal Reserve began forward guidance,⁵⁰ dramatically increasing the market’s expectation of the horizon of zero nominal interest rates. The absence of forward guidance in the model means that it undershoots the expected horizon at the zero lower bound from this point onwards, and indeed the model economy ultimately “lifts off” from the zero lower bound at the end of 2013, whereas in practice this only happened in mid-2015. I do not enrich the model to feature forward guidance for two reasons. First, as described in Table 7, 10 of the 13 extensions to UI in my model all occur before August 2011, so that accounting for forward guidance would have a relatively small effect on my results. Second, accounting for forward guidance would only increase the model-implied stimulus from UI in the remaining 3 extensions, rendering my results conservative.

⁵⁰The Federal Open Market Committee announced that “economic conditions...are likely to warrant exceptionally low levels for the federal funds rate at least through mid-2013.”

6.3 Effects of UI extensions

I now characterize the effects of the UI extensions in this environment.

I first compare the model dynamics to a counterfactual economy subject to the same discount factor shocks but with no UI extensions. Figure 9 presents the same endogenous variables as Figures 6 and 7 except for the nominal interest rate; I do not show the latter for brevity because in the counterfactual economy, as in the baseline, the nominal interest rate remains at zero through virtually the entire period of UI extensions.

The first panel of Figure 9 demonstrates that the counterfactual economy sees a larger rise in unemployment. The unemployment rate would have been as much as 0.4pp higher were it not for the benefit extensions. More generally, the model implies that the benefit extensions were not a cause of unemployment persistence during the Great Recession.

The remaining panels of Figure 9 demonstrate that the counterfactual economy is more slack on a number of other dimensions. Labor market tightness and aggregate consumption are lower, while long-term unemployment is higher. These differences are especially pronounced by 2011. With more slack in the counterfactual economy, there is more disinflation.

Table 8 considers the effects of each of the 13 shocks in Table 7 in isolation. The effect of each UI shock is computed by comparing the transitional dynamics with the shock to those without the shock, assuming no future shocks to UI nor fundamentals from that month onwards. As is evident, all 13 shocks feature a positive output multiplier, around 1. There is nonetheless obvious heterogeneity across shocks which underscores the key mechanisms underlying these extensions.

For instance, a comparison of shock 1 and 4 demonstrates the key role of the binding zero lower bound. Both shocks extend UI over a roughly one year horizon, but at the time of shock 1 the zero lower bound is not expected to bind, whereas at the time of shock 4 it is expected to bind over almost the entire period of extended UI. For that reason, shock 4 generates more stimulus.

A comparison of shock 3 and 9 demonstrates the key role of dynamic amplification via reduced precautionary savings and a higher job-finding rate. Both shocks push out the horizon of extended benefits by 6 months, but shock 3 does so 8 months in the future whereas shock 9 does so only 2 months in the future. Consistent with Figure 4, the output multiplier for shock 3 is larger than for shock 9.

Appendix E finally provides a case study of the expiration of extended benefits in December 2013. In the analysis above, I assume that upon the final reauthorization of benefits in January 2013, agents rationally expected that benefits would expire in December 2013. In the appendix, I consider an alternative scenario in which agents expected benefits to last through 2014, but then they unexpectedly expire in December 2013. The analysis clarifies

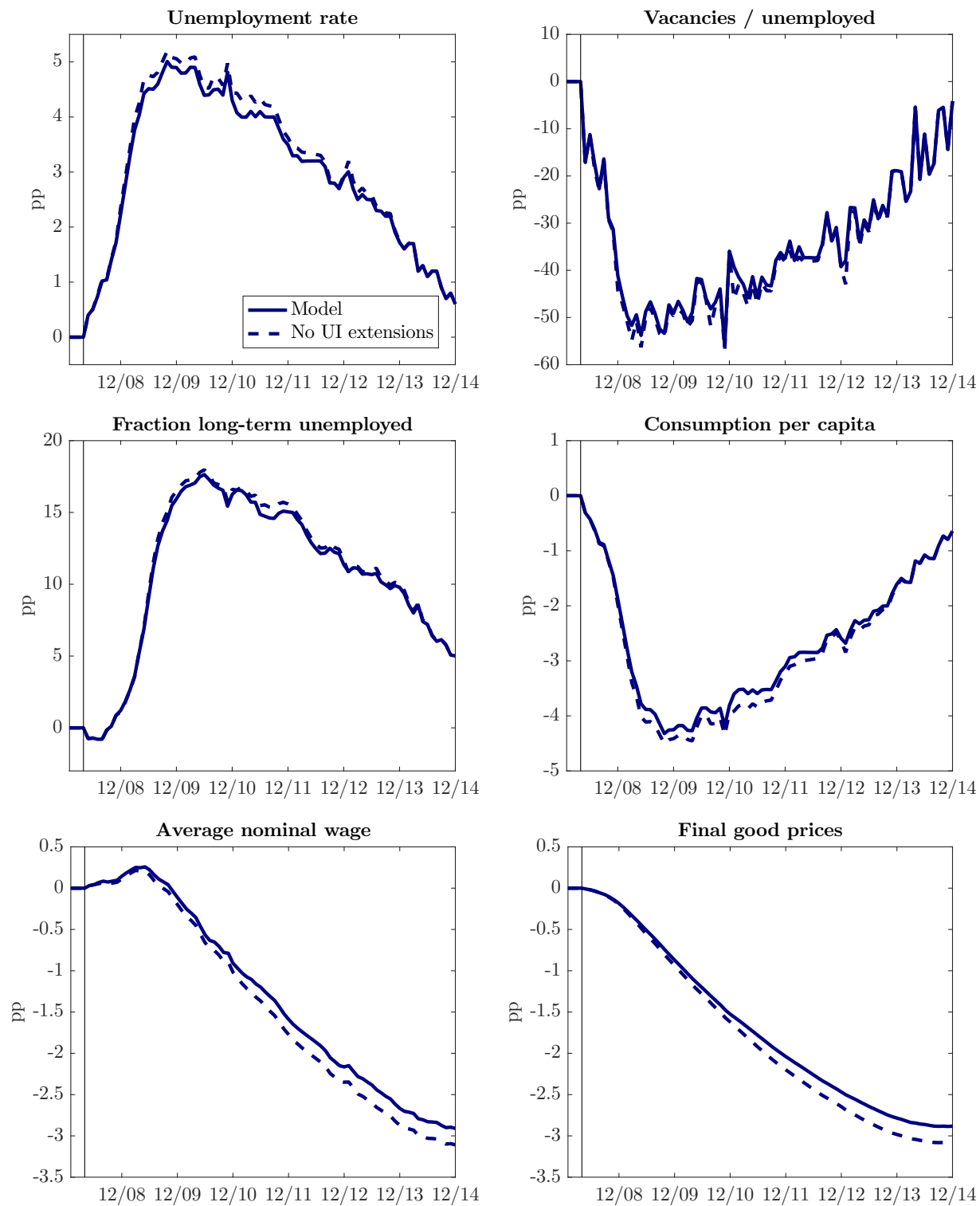


Figure 9: effects of UI shocks

Note: counterfactual environment maintains the same discount factor shocks in Figure 6.

	Date	Output multiplier	Avg change in unemployment rate
1	7/2008	0.6	-0.01pp
2	12/2008	0.8	-0.03pp
3	3/2009	1.8	-0.04pp
4	5/2009	1.2	-0.02pp
5	11/2009	0.8	-0.01pp
6	1/2010	1.0	-0.04pp
7	3/2010	0.9	-0.02pp
8	4/2010	1.0	-0.04pp
9	8/2010	1.1	-0.09pp
10	1/2011	1.5	-0.10pp
11	1/2012	1.0	-0.04pp
12	3/2012	1.2	-0.03pp
13	1/2013	1.0	-0.07pp

Table 8: effects of each UI shock

Note: see Table 7 for description of each UI shock. Effect of shock in period t is computed by comparing transitional dynamics with the UI shock to those without the UI shock, assuming no future shocks to UI nor fundamentals from period $t + 1$ onwards. Output multiplier and effect on unemployment computed over horizon of UI shock.

first that even if the expiration was unexpected, it need not have been accompanied by a sharp deterioration in the labor market to the extent that favorable fundamental shocks supported the economy at the same time. For instance, when I recalibrate discount factor shocks to match the dynamics of unemployment, the (untargeted) dynamics of vacancies are virtually indistinguishable between my baseline model and the model with unexpected expiration. Of course, this does not mean the expiration is neutral: holding *fixed* the path of discount factor shocks, but comparing the dynamics with unexpected expiration to those in a counterfactual without expiration, I find that the real economy would have recovered faster towards trend in the counterfactual economy.

6.4 Role of zero lower bound

I now further characterize the key role of the zero lower bound for the above results.

I first simulate a counterfactual economy subject to the same discount factor shocks and UI extensions as the baseline model, but without a zero lower bound on the nominal interest rate. The left panel of Figure 10 demonstrates that this counterfactual economy sees a smaller rise in unemployment than the baseline. The right panel demonstrates that what underlies this result is a substantial decline in the nominal interest rate (below zero), which

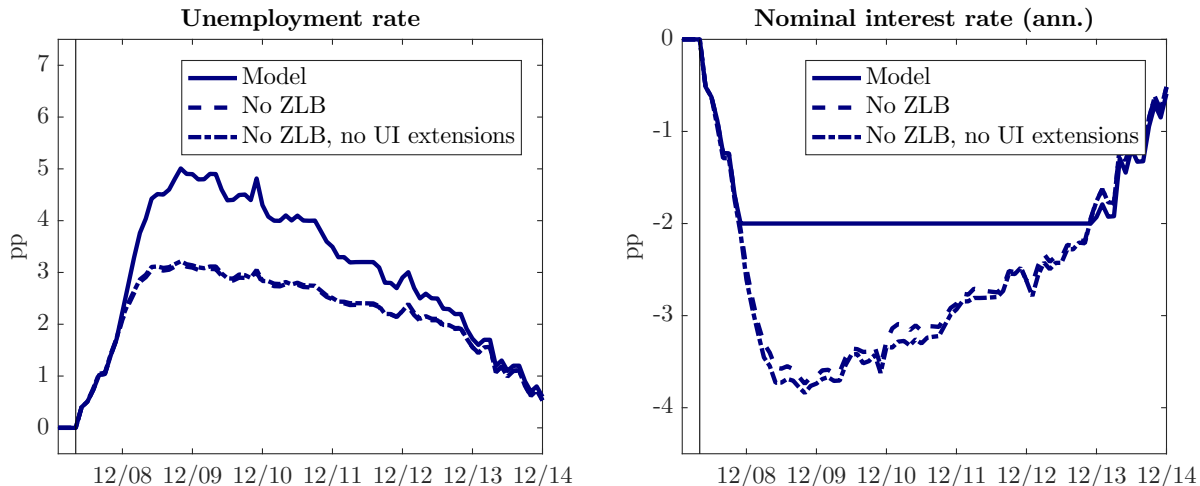


Figure 10: effects of zero lower bound

Note: counterfactual environments maintain the same discount factor shocks in Figure 6.

helps to undo the recessionary effects of positive discount factor shocks.

I then simulate this same economy except without any UI extensions. The left panel demonstrates that unemployment is close to indistinguishable from the environment with the extensions. The right panel demonstrates that monetary policy endogenously tightens in response to these extensions, explaining why they have smaller effects on economic activity.

Taken together, the zero lower bound on unemployment plays two key roles. First, it generates a deeper economic recession given the same fundamental shocks, implying a larger pool of workers affected by UI extensions. Second, it explains why monetary policy does not tighten in response to the demand stimulus from extended UI.

6.5 Role of real wage rigidity

I now shed further light on the identification of real wage rigidity and its role in these results.

In Figure 11, I first compare the data and baseline path of nominal wages and prices to alternative calibrations with more rigid real wages ($\iota = 1$) and less rigid real wages ($\iota = 0.88$). The latter two cases are generated using alternative sequences of discount factor shocks to match the same unemployment series in Figure 5. As is evident, a lower degree of real wage rigidity would imply that nominal wages and prices fall by more during this period. This makes clear that the model requires a high degree of real wage rigidity to rationalize the absence of substantial deflation despite the rise in unemployment during the Great Recession.

Of course, with more real wage flexibility, the model implies only greater stimulus from UI extensions at the zero lower bound. In Table 9, I compute the output multipliers from

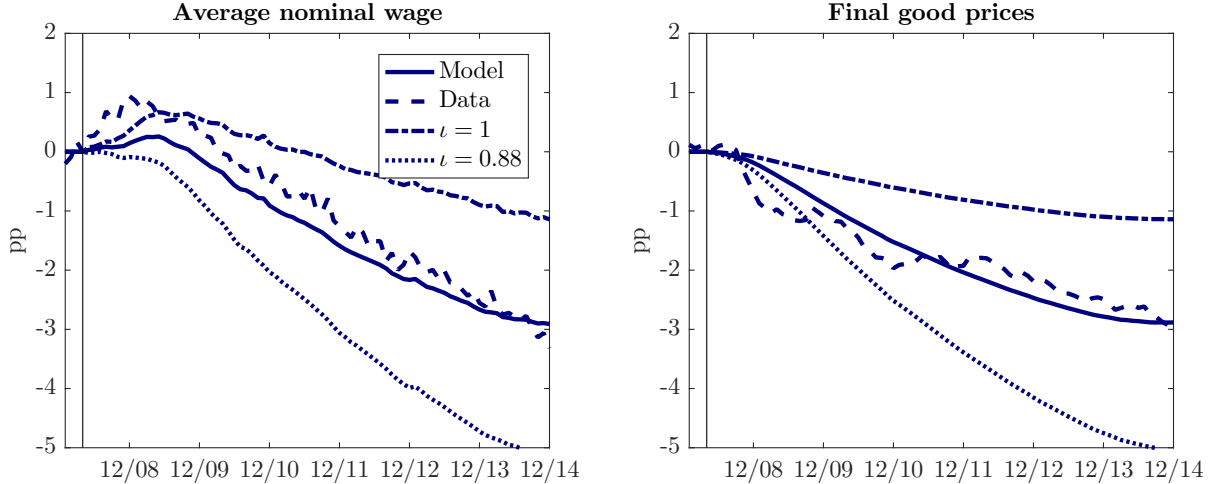


Figure 11: wages and prices with alternative real wage rigidity ι

Note: series displayed in deviations from steady-state (for model) and April 2008 (in data). Model series under alternative values of ι are generated using alternative sequences of discount factor shocks to match the same unemployment series in Figure 5.

each of the 13 UI shocks across these calibrations. As is evident, a lower degree of real wage rigidity only implies more stimulus from UI extensions, consistent with Table 6.

Nonetheless, the case with fully rigid real wages still features substantial stimulus. In fact, the multipliers are more than half of those obtained with $\iota = 0.94$. Since the inflation expectations channel is extremely small when real wages are fully rigid — evident from the comparison of a constant real versus nominal interest rate in Table 4 — I conclude that around my estimated degree of real wage rigidity, the direct effect of UI extensions on aggregate demand are more important than the induced effect through inflation expectations in driving the macroeconomic effects of UI extensions during the Great Recession.

Several other considerations justify the high degree of real wage rigidity in my analysis. While there continues to be substantial debate in the literature, such high degrees of real wage rigidity are well within the range consistent with macro evidence on labor market fluctuations over the business cycle,⁵¹ as well as micro evidence on the responsiveness of real wages to changes in UI.⁵² I also continue to estimate a high degree of real wage rigidity when I account

⁵¹Shimer [2010], for instance, also focuses on a degree of (monthly) real wage rigidity around or above 0.95. The comovements between the labor wedge, hours, and consumption/output ratios justify this choice. In the data, the labor wedge and hours are strongly negatively correlated, while the labor wedge and consumption/output ratio are essentially uncorrelated (see his Table 1.1). Absent real wage rigidity in a conventional search model with capital and (only) productivity shocks around a deterministic trend, the labor wedge has a correlation of 0.96 with employment and almost -1 with the consumption/output ratio (see his Table 3.3). Real wage rigidity of 0.993 is needed to bring both close to zero (see his Figure 4.2).

⁵²While I have followed Hall [2005], Blanchard and Gali [2010], Shimer [2010], and much of the literature in assuming that a single parameter (ι) governs the responsiveness of real wages to all shocks, one could

Output multiplier				
	Date	$\iota = 0.88$	Model	$\iota = 1$
1	7/2008	0.6	0.6	0.6
2	12/2008	1.4	0.8	0.6
3	3/2009	2.9	1.8	1.0
4	5/2009	1.7	1.2	0.8
5	11/2009	1.0	0.8	0.8
6	1/2010	1.2	1.0	0.8
7	3/2010	1.0	0.9	0.7
8	4/2010	1.2	1.0	0.8
9	8/2010	1.3	1.1	0.9
10	1/2011	2.3	1.5	0.9
11	1/2012	1.4	1.0	0.8
12	3/2012	1.9	1.2	0.8
13	1/2013	1.4	1.0	0.8

Table 9: effects of each UI shock with alternative real wage rigidity ι

Note: see Table 7 for description of each UI shock. Effect of shock in period t is computed by comparing transitional dynamics with the UI shock to those without the UI shock, assuming no future shocks to UI nor fundamentals from period $t + 1$ onwards. Output multiplier computed over horizon of UI shock.

for other driving forces besides demand shocks during the Great Recession: in appendix E, I present an alternative calibration featuring both discount factor and separation rate shocks, where the latter is directly disciplined by the time-series of the aggregate separation rate. Even in this case, I continue to estimate $\iota = 0.94$.

6.6 Interpretation of empirical evidence

My analysis complements a growing empirical literature studying UI during this period.

This literature has obtained conflicting results. Boone et al. [2019] and Chodorow-Reich et al. [2019] find small but potentially positive effects of the UI extensions on employment. Hagedorn et al. [2016], Hagedorn et al. [2019], and Dieterle et al. [2020] find that the UI extensions lowered employment, with large effects in the first two papers.

The present model implies effects which are consistent with the upper end of estimates in this literature. Boone et al. [2019] find that a three-month extension of UI raises the employment-to-population rate between -0.09pp and 0.24pp,⁵³ while Chodorow-Reich et al.

entertain a specification in which real wages are more responsive to some shocks than others. Of most relevance for my results is the responsiveness of real wages to changes in UI. In this context, my estimated high degree of real wage rigidity is especially reasonable: Card et al. [2007], Jäger et al. [2020], Lalive [2007], and van Ours and Vodopivec [2008] have all exploited micro variation in UI and estimated extremely small effects of UI duration on wages.

⁵³In Table 2, these authors find that a 73-week extension of benefits increases employment-to-population

[2019] find that a three-month extension of UI reduces the unemployment rate between -0.06pp and 0.09pp.⁵⁴ The positive ranges of these confidence intervals are consistent with my baseline results. One reason that my estimates may be at the positive end of these ranges is that the empirical literature has focused on cross-state identification which may understate the increase in consumption on tradeables.

The structural approach in this paper provides three other insights on mechanisms and implications which complement these estimates. First, the modest estimates of stimulus in terms of unemployment are consistent with meaningfully-sized output multipliers, since transfers to the long-term unemployed were a small fraction of overall output even during the Great Recession. Second, differences in identifying variation can rationalize why Boone et al. [2019] may have estimated greater stimulus than Chodorow-Reich et al. [2019]: since the former use differences in UI with an average half-life more than a year while the latter use shocks to UI with an average half-life of three months, the former would be expected to measure greater stimulus from diminished precautionary saving. Third, the estimates of stimulus are consistent with the micro evidence on MPC heterogeneity and precautionary saving used to calibrate and validate my model, and do not rely on an especially large effect through inflation expectations at the zero lower bound.

7 Conclusion

This paper studies UI in general equilibrium with incomplete markets, search frictions, and nominal rigidities. An increase in UI raises aggregate demand if the unemployed have a higher MPC than the employed or if agents have a precautionary saving motive. This raises equilibrium output and employment if monetary policy does not raise the nominal rate. In a quantitative analysis of the U.S. economy over 2008-2014, I find that these mechanisms drove the macroeconomic effects of UI extensions during this period. The observed extensions had a contemporaneous output multiplier around 1. The unemployment rate would have been as much as 0.4pp higher were it not for the benefit extensions.

There are two natural directions to build on the analysis of this paper. One direction is to study the positive effects of other social insurance and cash transfer programs: as with UI, these programs may be effective “tags” for agents with high MPCs and affect agents’

by 0.43pp with standard error 0.47. This implies that a 13-week extension of benefits increases employment-to-population by $[0.43 - 1.96 \times 0.47, 0.43 + 1.96 \times 0.47] \times (13/73) = [-0.09, 0.24]$ pp. Scaling by (13/73) can be justified by my results in Figure 4 that the stimulus from UI is stable across magnitudes of the extension.

⁵⁴In their discussion of Table 4, the authors argue that their estimates imply a one-month UI duration innovation reduces the unemployment rate by $[-0.02, 0.03]$ pp. This implies that a three-month UI duration innovation reduces the unemployment rate by $[-0.06, 0.09]$ pp.

incentives to precautionary save, giving these programs an aggregate demand stabilization role in recessions. Another direction is to explore the normative implications of my findings: the effects of UI and other social insurance programs on aggregate demand will naturally affect their optimal generosity over the business cycle, particularly if monetary policy is constrained. I leave the analysis of these exciting questions to future research.

References

- Sushant Acharya and Keshav Dogra. Understanding HANK: insights from a PRANK. *Econometrica*, 88(3):1113–1158, 2020.
- Hie Joo Ahn and James D. Hamilton. Heterogeneity and unemployment dynamics. *Journal of Business & Economic Statistics*, 38(3):554–569, 2020.
- S. Rao Aiyagari. Uninsured aggregate risk and idiosyncratic saving. *Quarterly Journal of Economics*, 109(3):659–684, 1994.
- George A. Akerlof. The economics of “tagging” as applied to the optimal income tax, welfare programs, and manpower planning. *American Economic Review*, 68(1):8–19, 1978.
- Julien Albertini and Arthur Poirier. Unemployment benefit extensions at the zero lower bound. *Review of Economic Dynamics*, 18:733–751, 2015.
- Fernando Alvarez, Katarina Borovickova, and Robert Shimer. Decomposing duration dependence in a stopping time model. *Working paper*, 2015.
- Adrien Auclert. Monetary policy and the redistribution channel. *American Economic Review*, 109(6):2333–2367, 2019.
- Adrien Auclert, Matthew Rognlie, and Ludwig Straub. The intertemporal Keynesian cross. *Working paper*, 2018.
- Adrien Auclert, Bence Bardoczy, Matthew Rognlie, and Ludwig Straub. Using the sequence-space Jacobian to solve and estimate heterogeneous-agent models. *Econometrica*, 89(5):2375–2408, 2021.
- Martin Neil Baily. Some aspects of optimal unemployment insurance. *Journal of Public Economics*, 10(3):379–402, 1978.

- Michael D. Bauer and Glenn D. Rudebusch. Monetary policy expectations at the zero lower bound. *Journal of Money, Credit and Banking*, 48(7):1439–1465, 2016.
- Truman Bewley. A difficulty with the optimum quantity of money. *Econometrica*, 51(5):1485–1504, 1983.
- Olivier Blanchard and Jordi Gali. Labor markets and unemployment: a new keynesian model with unemployment. *American Economic Journal: Macroeconomics*, 2(2):1–30, 2010.
- Olivier Blanchard, Florence Jaumotte, and Prakash Loungani. Labor market policies and IMF advice in advanced economies during the Great Recession. *IMF Staff Discussion Note*, 2013.
- Rebecca M. Blank and David E. Card. Recent trends in insured and uninsured unemployment: is there an explanation? *Quarterly Journal of Economics*, 106(4):1157–1189, 1991.
- Christopher Boone, Arindrajit Dube, Lucas Goodman, and Ethan Kaplan. Unemployment insurance generosity and aggregate employment. *American Economic Journal: Policy*, 2019.
- Christian Broda and Jonathan A. Parker. The economic stimulus payments of 2008 and the aggregate demand for consumption. *Journal of Monetary Economics*, 68:S20–36, 2014.
- David Card, Raj Chetty, and Andrea Weber. Cash on hand and competing models of intertemporal behavior: new evidence from the labor market. *Quarterly Journal of Economics*, 122(4):1511–1560, 2007.
- Christopher Carroll, Jiri Slacalek, Kiichi Tokuoka, and Matthew N. White. The distribution of wealth and the marginal propensity to consume. *Quantitative Economics*, 8(3):977–1020, 2017.
- Edouard Challe, Julien Matheron, Xavier Ragot, and Juan F. Rubio-Ramirez. Precautionary saving and aggregate demand. *Quantitative Economics*, 8(2):435–478, 2017.
- Raj Chetty. A general formula for the optimal level of social insurance. *Journal of Public Economics*, 90(10-11):1879–1901, 2006.
- Gabriel Chodorow-Reich. Geographic cross-sectional fiscal spending multipliers: what have we learned? *American Economic Journal: Economic Policy*, 11(2):1–34, 2019.
- Gabriel Chodorow-Reich and Loukas Karabarbounis. The cyclical cost of the opportunity cost of employment. *Journal of Political Economy*, 124(6):1563–1618, 2016.

- Gabriel Chodorow-Reich, John Coghlanese, and Loukas Karabarbounis. The macro effects of unemployment benefit extensions: a measurement error approach. *Quarterly Journal of Economics*, 134(1):227–279, 2019.
- Lawrence Christiano, Martin Eichenbaum, and Sergio Rebelo. When is the government spending multiplier large? *Journal of Political Economy*, 119(1):78–121, 2011.
- Lawrence J. Christiano, Martin S. Eichenbaum, and Mathias Trabandt. Understanding the Great Recession. *American Economic Journal: Macroeconomics*, 7(1):110–167, 2015.
- Lawrence J. Christiano, Martin S. Eichenbaum, and Mathias Trabandt. Unemployment and business cycles. *Econometrica*, 84(4):1523–1569, 2016.
- Congressional Budget Office. Unemployment insurance in the wake of the recent recession. November 2012.
- James S. Costain and Michael Reiter. Stabilization versus insurance: welfare effects of procyclical taxation under incomplete markets. *Working paper*, 2005.
- Marco Del Negro, Marc P. Giannoni, and Frank Schorfheide. Inflation in the Great Recession and New Keynesian models. *American Economic Journal: Macroeconomics*, 7(1):168–196, 2015.
- Wouter J. den Haan, Pontus Rendahl, and Markus Riegler. Unemployment (fears) and deflationary spirals. *Journal of the European Economic Association*, 16(5):1281–1349, 2018.
- Peter A. Diamond. Mobility costs, frictional unemployment, and efficiency. *Journal of Political Economy*, 89(4):798–812, 1981.
- Steven Dieterle, Otavio Bartalotti, and Quentin Brummet. Revisiting the effects of unemployment insurance extensions on unemployment: a measurement-error-corrected regression discontinuity approach. *American Economic Journal: Economic Policy*, 12(2): 84–114, 2020.
- Gauti Eggertsson. The paradox of toil. *Working paper*, 2010.
- Stefan Eriksson and Dan-Olaf Rooth. Do employers use unemployment as a sorting criterion when hiring? Evidence from a field experiment. *American Economic Review*, 104(3): 1014–1039, 2014.

- Henry S. Farber and Robert G. Valetta. Do extended unemployment benefits lengthen unemployment spells? Evidence from recent cycles in the U.S. labor market. *Working paper*, 2013.
- Peter Ganong and Pascal Noel. Consumer spending during unemployment: positive and normative implications. *American Economic Review*, 109(7):2383–2424, 2019.
- Rand Ghayad. Why is it so hard for job-seekers with valuable experience to find work? *Working paper*, 2013.
- Nils Gornemann, Keith Kuester, and Makoto Nakajima. Doves for the rich, hawks for the poor? Distributional consequences of systematic monetary policy. *Working paper*, 2021.
- Jonathan Gruber. The consumption smoothing benefits of unemployment insurance. *American Economic Review*, 87(1):192–205, 1997.
- Veronica Guerrieri and Guido Lorenzoni. Credit crises, precautionary savings, and the liquidity trap. *Quarterly Journal of Economics*, 132(3):1427–1467, 2017.
- Marcus Hagedorn and Iourii Manovskii. The cyclical behavior of equilibrium unemployment and vacancies revisited. *American Economic Review*, 98(4):1692–1706, 2008.
- Marcus Hagedorn, Iourii Manovskii, and Kurt Mitman. The impact of unemployment benefit extensions on employment: the 2014 employment miracle? *Working paper*, 2016.
- Marcus Hagedorn, Fatih Karahan, Iourii Manovskii, and Kurt Mitman. Unemployment benefits and unemployment in the Great Recession: the role of equilibrium effects. *Working paper*, 2019.
- Robert E. Hall. Employment fluctuations with equilibrium wage stickiness. *American Economic Review*, 95(1):50–65, 2005.
- Robert E. Hall. High discounts and high unemployment. *American Economic Review*, 107(2):305–330, 2017.
- Martin Harding, Jesper Linde, and Mathias Trabandt. Resolving the missing deflation puzzle. *Journal of Monetary Economics*, 2021.
- Jonathan Heathcote and Fabrizio Perri. Wealth and volatility. *Review of Economic Studies*, 4(85):2173–2213, 2018.
- Mark Huggett. The risk-free rate in heterogeneous-agent incomplete-insurance economies. *Journal of Economic Dynamics and Control*, 17:953–969, 1993.

- Simon Jäger, Benjamin Schoefer, Samuel Young, and Josef Zweimüller. Wages and the value of non-employment. *Quarterly Journal of Economics*, 135(4):1905–1963, 2020.
- Greg Kaplan and Giovanni L. Violante. A model of the consumption response to fiscal stimulus payments. *Econometrica*, 82(4):1199–1239, 2014.
- Greg Kaplan, Benjamin Moll, and Giovanni L. Violante. Monetary policy according to hank. *American Economic Review*, 108(3):697–743, 2018.
- Kory Kroft, Fabian Lange, and Matthew J. Notowidigdo. Duration dependence and labor market conditions: evidence from a field experiment. *Quarterly Journal of Economics*, 128(3):1123–1167, 2013.
- Kory Kroft, Fabian Lange, Matthew J. Notowidigdo, and Lawrence F. Katz. Long-term unemployment and the great recession: the role of composition, duration dependence, and non-participation. *Journal of Labor Economics*, 34(S1):S7–S54, 2016.
- Dirk Krueger, Kurt Mitman, and Fabrizio Perri. *Macroeconomics and Household Heterogeneity*, volume 2 of *Handbook of Macroeconomics*, pages 843–921. North-Holland, 2016a.
- Dirk Krueger, Kurt Mitman, and Fabrizio Perri. *On the Distribution of the Welfare Losses of Large Recessions*. Advances in Economics and Econometrics: Theory and Applications, Eleventh World Congress. 2016b.
- Per Krusell and Anthony A. Smith. Income and wealth heterogeneity in the economy. *Journal of Political Economy*, 106(5):867–896, 1998.
- Per Krusell, Toshihiko Mukoyama, and Aysegül Sahin. Labour-market matching with precautionary saving and aggregate fluctuations. *Review of Economic Studies*, 77(4):1477–1507, 2010.
- Rafael Lalive. Unemployment benefits, unemployment duration, and post-unemployment jobs: a regression discontinuity approach. *American Economic Review*, 97:108–112, 2007.
- Shelly Lundberg. The added worker effect. *Journal of Labor Economics*, 3(1):11–37, 1985.
- Alisdair McKay and Ricardo Reis. The role of automatic stabilizers in the U.S. business cycle. *Econometrica*, 84(1):141–194, 2016.
- Alisdair McKay and Ricardo Reis. Optimal automatic stabilizers. *Review of Economic Studies*, 88(5):2375–2406, 2021.

- Alisdair McKay, Emi Nakamura, and Jon Steinsson. The power of forward guidance revisited. *American Economic Review*, 106(10):3133–3158, 2016.
- Kurt Mitman and Stanislav Rabinovich. Optimal unemployment insurance in an equilibrium business-cycle model. *Journal of Monetary Economics*, 71:1477–1507, 2015.
- Kurt Mitman and Stanislav Rabinovich. Do unemployment benefit extensions explain the emergence of jobless recoveries? *Working paper*, 2020.
- Dale T. Mortensen. *The matching process as a noncooperative bargaining game*, pages 233–254. The Economics of Information and Uncertainty. University of Chicago Press, 1982.
- Toshihiko Mukoyama, Christina Patterson, and Aysegul Sahin. Job search behavior over the business cycle. *American Economic Journal: Macroeconomics*, 10(1):190–215, 2018.
- Makoto Nakajima. Business cycles in the equilibrium model of labor market search and self-insurance. *Working paper*, 2007.
- Makoto Nakajima. A quantitative analysis of unemployment benefit extensions. *Journal of Monetary Economics*, 59:686–702, 2012a.
- Makoto Nakajima. Business cycles in the equilibrium model of labor market search and self-insurance. *International Economic Review*, 53(2):399–432, 2012b.
- Emi Nakamura and Jon Steinsson. Price rigidity: microeconomic evidence and macroeconomic implications. *Annual Review of Economics*, 5:133–163, 2013.
- Jonathan A. Parker, Nicholas S. Souleles, David S. Johnson, and Robert McClelland. Consumer spending and the economic stimulus payments of 2008. *American Economic Review*, 103(6):2530–2553, 2013.
- Barbara Petrongolo and Christopher A. Pissarides. Looking into the black box: a survey of the matching function. *Journal of Economic Literature*, 39(2):390–431, 2001.
- Christopher A. Pissarides. Search intensity, job advertising, and efficiency. *Journal of Labor Economics*, 2(1):128–143, 1984.
- Christopher A. Pissarides. *Equilibrium unemployment theory*. MIT Press, 2nd edition, 2000.
- Valerie A. Ramey. Can government purchases stimulate the economy? *Journal of Economic Literature*, 49(3):673–685, 2011.

- Morten O. Ravn and Vincent Sterk. Job uncertainty and deep recessions. *Journal of Monetary Economics*, 90:125–141, 2017.
- Morten O. Ravn and Vincent Sterk. Macroeconomic fluctuations with HANK & SAM: an analytical approach. *Journal of the European Economics Association*, 19(2):1162–1202, 2020.
- Julio J. Rotemberg. Sticky prices in the United States. *Journal of Political Economy*, 90(6):1187–1211, 1982.
- Johannes F. Schmieder and Till von Wachter. The effects of unemployment insurance benefits: new evidence and interpretation. *Annual Review of Economics*, 8:547–581, 2016.
- Robert Shimer. Search intensity. *Working paper*, 2004.
- Robert Shimer. *Labor markets and business cycles*. Princeton University Press, 2010.
- Jose I. Silva and Manuel Toledo. Labor turnover costs and the cyclical behavior of vacancies and unemployment. *Macroeconomic Dynamics*, 13(51):76–96, 2009.
- Melvin Stephens. Worker displacement and the added worker effect. *Journal of Labor Economics*, 3(20):503–537, 2002.
- Lawrence Summers. The economic case for extending unemployment insurance. *The White House Blog*, July 2010.
- Eric T. Swanson and John C. Williams. Measuring the effect of the zero lower bound on medium- and longer-term interest rates. *American Economic Review*, 104(10):3154–3185, 2014.
- John B. Taylor. *A historical analysis of monetary policy rules*, pages 319–348. Monetary Policy Rules. University of Chicago Press, 1999.
- Jan C. van Ours and Milan Vodopivec. Does reducing unemployment insurance generosity reduce job match quality? *Journal of Public Economics*, 92:684–695, 2008.
- Ivan Werning. Managing a liquidity trap: monetary and fiscal policy. *Working paper*, 2012.
- Ivan Werning. Incomplete markets and aggregate demand. *Working paper*, 2015.
- Michael Woodford. *Interest and prices: foundations of a theory of monetary policy*. Princeton University Press, 2003.

Michael Woodford. Simple analytics of the government expenditure multiplier. *American Economic Journal: Macroeconomics*, 3(1):1–35, 2011.