

NBER WORKING PAPER SERIES

THE ECONOMICS OF PARENTING

Matthias Doepke
Giuseppe Sorrenti
Fabrizio Zilibotti

Working Paper 25533
<http://www.nber.org/papers/w25533>

NATIONAL BUREAU OF ECONOMIC RESEARCH
1050 Massachusetts Avenue
Cambridge, MA 02138
February 2019

We thank Ashley Wong and Jane Olmstead-Rumsey for excellent research assistance. Financial support from the National Science Foundation (grant SES-1260961) and the Swiss National Science Foundation (grant 100018_165616, Sorrenti and Zilibotti) is gratefully acknowledged. The views expressed herein are those of the authors and do not necessarily reflect the views of the National Bureau of Economic Research.

NBER working papers are circulated for discussion and comment purposes. They have not been peer-reviewed or been subject to the review by the NBER Board of Directors that accompanies official NBER publications.

© 2019 by Matthias Doepke, Giuseppe Sorrenti, and Fabrizio Zilibotti. All rights reserved. Short sections of text, not to exceed two paragraphs, may be quoted without explicit permission provided that full credit, including © notice, is given to the source.

The Economics of Parenting
Matthias Doepke, Giuseppe Sorrenti, and Fabrizio Zilibotti
NBER Working Paper No. 25533
February 2019
JEL No. J13,J24,R20

ABSTRACT

Parenting decisions are among the most consequential choices people make throughout their lives. Starting with the work of pioneers such as Gary Becker, economists have used the toolset of their discipline to understand what parents do and how parents' actions affect their children. In recent years, the literature on parenting within economics has increasingly leveraged findings and concepts from related disciplines that also deal with parent-child interactions. For example, economists have developed models to understand the choice between various parenting styles that were first explored in the developmental psychology literature, and have estimated detailed empirical models of children's accumulation of cognitive and noncognitive skills in response to parental and other inputs. In this paper, we survey the economic literature on parenting and point out promising directions for future research.

Matthias Doepke
Northwestern University
Department of Economics
2001 Sheridan Road
Evanston, IL 60208
and NBER
doepke@northwestern.edu

Fabrizio Zilibotti
Department of Economics
Yale University
28 Hillhouse Avenue
New Haven, CT 06520
and NBER
fabrizio.zilibotti@yale.edu

Giuseppe Sorrenti
University of Zurich
Schönberggasse 1
8001 Zurich
Switzerland
giuseppe.sorrenti@econ.uzh.ch

1 Introduction

Among the distinct characteristics of humans is extraordinarily slow development. We are born helpless, and then go through a prolonged phase of childhood and adolescence before reaching full maturity decades into our lives. As a consequence, young humans depend on their parents. Child rearing or *parenting* refers to everything parents do to support the development of their children, from basics such as providing food and shelter to guiding their emotional and intellectual development.

While some time ago parenting was mostly studied in other social sciences such as sociology and developmental psychology, in recent years a large literature on parenting has developed within economics. In part, this reflects the growing reach of economics, which in the case of parenting goes back to Gary Becker's work on the family.¹ However, an equally important factor is that recent research has shown parenting decisions to have profound economic implications. In modern economies, about two-thirds of total income goes to workers as wages, and most of this income reflects the return to accumulated human capital rather than "raw" labor. A key factor in the accumulation of human capital, in turn, is parenting decisions that start in the very first years of life and continue through a child's development to adulthood. Economists who want to study the role of human capital in economic development, determinants of social mobility, and the drivers of long-run inequality must take parenting decisions into account.

Choices that matter for parenting start long before a child is born. In the marriage market, for example, one criterion in choosing a partner is what she or he has to offer in terms of expected future investments in children. A number of papers on the economics of marriage analyze how future parenting plans affect premarital investments and the matching patterns in the marriage market.² In turn, these choices influence the parenting choices that take place after a relationship is formed. Even more directly, the choice of how to raise each individual child is closely linked to the choice of how many children to have in the first place. One of the central concepts in the economics of fertility is Becker's quantity-quality

¹See Becker (1981).

²See, for example, Chiappori, Salanié, and Weiss (2017).

tradeoff, i.e., the notion that a larger number of children (quantity) tends to lower investment in each individual child (quality).³ This tradeoff is inevitable in particular in regard to parents' time: for parents with many children, it is simply not possible to spend hours of one-on-one time each day with each individual child, whereas parents of only children have more flexibility. Fertility and other parenting decisions are therefore closely linked.

Nevertheless, in this survey we focus more narrowly on child-rearing decisions that take place after parents have formed a relationship and have had a child. In part, this is because the economics of marriage and fertility has a longer history and a number of surveys are available.⁴ Moreover, up to now the literatures on marriage, fertility, and narrowly defined parenting have mostly developed in isolation, with a lack of research that considers, say, a joint decision involving how many children to have and with which parenting style to raise them. We believe considering interactions between different choices that affect child rearing to be an important direction for future research, and we discuss some specific issues (such as the role of single parenting) at the end of the paper.

We develop our discussion of the economic literature on "post birth" parenting around three main themes. First, we focus on the choice of a "parenting style." The term parenting style stems from developmental psychology, and refers to the broad strategies that parent follow in raising their children, such as an obedience-based "authoritarian" style versus "permissive" parenting that grants more independence to children. We describe how the economics of parenting can be used to derive predictions on how economic conditions affect the choice of parenting style, and we point to empirical evidence suggesting that variation in parenting practices over time and across space lines up well with these predictions.

Next, we focus on technology, and in particular on the production function al-

³See Becker (1960) for the initial statement of the quantity-quality tradeoff and Doepke (2015) for an overview of the role of this concept in the economics of fertility.

⁴For an overview of the economics of marriage and the family and some recent directions in this literature see Browning, Chiappori, and Weiss (2014), Lundberg and Pollak (2007), and Lundberg, Pollak, and Stearns (2016). Surveys with a focus on the macroeconomic implications of family decisions are provided by Doepke and Tertilt (2016) and Greenwood, Guner, and Vandenbroucke (2017). For the economics of fertility see, for example, Hotz, Klerman, and Willis (1997) and Chapter 7 of Doepke and Zilibotti (2019).

lowing children to acquire and accumulate skills. Some of the issues discussed in the underlying literature are the relative importance of parental and other inputs, the effect of early versus late inputs as children develop, and the complementarity between inputs over time and across different types of inputs.

Third, we focus on the effects of the environment. It has long been recognized that peer effects count for a lot in child development, especially during adolescence. This suggests that parents' impact on their children may work in large part through their influence on their children's environment rather than through their direct interactions with them. For example, parents choose the neighborhood in which a family lives, and the schools which their children attend. We discuss how these choices can be framed as an integral part of the economics of parenting.

We organize our discussion by presenting a general model that captures the main aspects of the economics of parenting. We model the decision problem of parents who care about their own utility and the welfare of their children. Following our previous work in (Doepke and Zilibotti 2017), the concern for children allows for both altruism (parents care about their children's utility) and paternalism (parents care about their children's actions, in ways that potentially conflict with the children's own preferences). Parents face a set of constraints that include standard budget and time constraints, but also technological constraints. For example, there is a "production function" that specifies how children's skills and attitudes evolve as a function of endowments and parental inputs. The framework also allows for environmental influences outside the immediate family to affect child development, such as peer effects in schools and neighborhood effects.

Using this general framework, we discuss the economic literature on the three main issues outlined above, and we relate theoretical results to empirical evidence. Much of the literature on the economics of parenting is recent; the research frontier is constantly evolving, and many new questions raised by current research are yet to be addressed. We therefore conclude by outlining a few areas for future research on the economics of parenting that we consider particularly promising.

In the following section, we present our economic model of parenting. In Section 3, we use this model to discuss the economics of choosing a parenting style,

and compare the predictions of the theory to data. In Section 4, we relate the recent literature on children’s skill acquisition to our model of parenting. Neighborhood and peer effects are discussed in Section 5. Conclusions and directions for future research are discussed in Section 6.

2 An Economic Model of Parenting

In this section, we outline a general economic model of parenting that we will use to discuss parenting styles, skill formation, and neighborhood and peer effects below. What we mean by “economic model” is that we conceive of parenting decisions in the same way that economists conceive of any other decision: parents pursue particular objectives that are summarized by a utility function, they act rationally and purposefully in pursuing these objectives, and they are subject to various constraints such as limits to their financial resources, their knowledge, their time, and the underlying technology of child development. Given that much of parenting is about parent-child interactions, the model also allows for children to have a say and take actions on their own. The main elements of the model are a combination of our earlier work on parenting style (Doepke and Zilibotti 2017) with the notion of a multistage production function for skill as in James Heckman’s recent work with different coauthors (e.g., Cunha and Heckman 2007, Cunha, Heckman, and Schennach 2010).

In the model, we limit attention to a single parent and a single child. We start with the parent’s objectives. The parent derives utility during two periods of adulthood, and also cares about the child. The value function that the parent seeks to maximize is given by:

$$V = U_1(C_1, L_1|A) + U_2(C_2, L_2|A) + Z((1 - \gamma)v + \gamma\tilde{v}). \quad (1)$$

We use the convention that upper-case variables refer to the parent, and lower-case variables to the child. Accordingly, C_t and L_t are the parent’s consumption and leisure in period t , and A is a vector of preference parameters for the parent. The overall weight that the parent attaches to the welfare of the child is given by the parameter $Z > 0$. The parent derives utility from the child in two different ways. First, she cares about the child’s actual lifetime utility v , i.e., the parent

displays *altruism*, as in Gary Becker's work on dynastic utility (e.g., Becker and Barro 1988, Barro and Becker 1989). Second, we also allow for the possibility that the parent may evaluate the welfare of the child through a different function \tilde{v} that does not coincide with the true utility of the child. This feature captures *paternalism*, i.e., a utility derived from the child's choices and outcomes that reflects the parents own, distinct views on what is good for the child. Paternalistic preferences (and the related concept of *imperfect empathy*) play a central role in the economic literature on cultural transmission.⁵ The parameter γ measures the relative importance of altruism versus paternalism in the parent's preferences. We abstract from uncertainty during the two periods of adulthood, but the setup allows for shocks that affect the child before reaching adulthood. The utility derived from the child is therefore an expected utility.

The value function that the child seeks to maximize (and which enters in the parent's altruistic utility) is:

$$v = u_1(c_1, l_1|a_1) + u_2(c_2, l_2|a_2) + zV'. \quad (2)$$

Here c_t and l_t are consumption and leisure of the child, a_t is the child's preference vector at age t , and V' is the expected continuation utility of the child after reaching adulthood, which in a dynastic model would be of the form (1). Unlike the parent's preferences A , the child's preferences a_t evolve during childhood, which captures the gradual formation of attitudes and non-cognitive skills such as patience and perseverance. Leisure l_t can be a vector of different activities from which the child derives enjoyment. The parameter $z \in (0, 1)$ denotes the weight that the child attached to future adult utility.

The parent's paternalistic concern about the child \tilde{v} is given by:

$$\tilde{v} = \tilde{u}_1(c_1, l_1|A) + \tilde{u}_2(c_2, l_2|A) + zV',$$

that is, the parent's paternalistic utility is defined over the same objects as the child's actual utility, but potentially with a different functional form for utility

⁵See Bisin and Verdier (2001) for a seminal contribution in this literature and Bisin and Verdier (2010) for a survey.

that may depend on the parent's preferences A .

The key implication of the paternalistic component in preferences is that the parent may disagree with the actions of the child; this scope for disagreement turns out to play a central role in the economics of parenting. In particular, parenting styles relate to how the disagreement between parent and child is resolved. Our representation is rather general and can capture different sources of disagreement, ranging from different views regarding risk aversion or work ethic to the consumption of particular goods such as alcohol and cigarettes.

A particularly common source of disagreement between parents and children (which we focus on below) stems from time preferences: the parent may wish that the child focus more on long-run success rather than instant gratification. More formally, the parent (in the paternalistic utility \tilde{v}) places relatively more weight on the child's future utility V' (compared to the young-age utility) than does the child in her own utility function v . Notice that even though the same discount factor z appears in \tilde{v} and v , our setup still incorporates the possibility of disagreement about intertemporal tradeoffs through the dependence of the utility functions $u_t(\cdot)$ and $\tilde{u}_t(\cdot)$ on the preferences A and a of the parent and the child. As a specific example, we can capture such a difference in patience by setting the utility of the child to:

$$v = a_1 u(c_1, l_1) + a_2 \beta u(c_2, l_2) + \beta^2 V', \quad (3)$$

whereas the paternalistic preference of the parent is given by:

$$\tilde{v} = u(c_1, l_1) + \beta u(c_2, l_2) + \beta^2 V', \quad (4)$$

where we define $\beta \equiv \sqrt{z}$. Here, β is the parent's discount factor whereas the child's (scalar) preference parameters $a_1 \geq 1$ and $a_2 \geq 1$ capture additional weight that the child places on experiences early in life relative to the later-in-life expected utility V' .⁶

⁶These utilities can be mapped into (1) and (2) by setting $u_1(c_1, l_1|a_1) = a_1 u(c_1, l_1)$, $u_2(c_2, l_2|a_2) = a_2 \beta u(c_2, l_2)$, $\tilde{u}_1(c_1, l_1|A) = u(c_1, l_1)$, and $\tilde{u}_2(c_1, l_1|A) = \beta u(c_2, l_2)$. In Section 3.2 below, we focus on the case where $a_2 = a > 1$ and $a_1 = a^2$. This case yields a constant intertemporal tradeoff, where the child's discount factor β/a is smaller than the adult discount factor β . In

Next, we turn to choices and constraints. The parent's choices at time t include own and the child's consumption C_t and c_t , leisure L_t , and labor supply N_t . We are particularly interested in parenting choices, i.e., choices aimed at affecting the development of the child. The parent's investment in the child's development is represented by a vector I_t , where:

$$I_t = \{X_t, E_t\}.$$

Here X_t is a time investment in child rearing, and E_t is a monetary investment (expense) in child rearing. The parent can also affect the influence of peers on the child's development by choosing the district of residence d_t where the family lives. Finally, the parent can determine the choice set \mathcal{X}_t for the child, which determines how much freedom of choice the child has.

The parent is constrained by an intertemporal budget constraint:

$$C_1 + c_1 + E_1 + q(d_1) + \frac{1}{R} (C_2 + c_2 + E_2 + q(d_2)) = w_1(S) N_1 + \frac{1}{R} w_2(S) N_2 \quad (5)$$

and by a time constraint:

$$L_t + N_t + X_t = 1.$$

Here R is the gross interest rate, S is the skill vector of the parent, $w_t(S)$ is the wage, and $q(d_t)$ is the rental cost of living in neighborhood d_t . Neighborhoods may differ for exogenous reasons, such as the quality of public schools. There may be also peer externalities, namely, the quality of neighborhood is a function of the average skills of the residents. If households cannot borrow, the intertemporal budget constraint is replaced by two sequential constraints.

The child's choices are leisure l_t and a vector of own investment in skills x_t . The choices of the child are constrained by the choice set imposed by the parent:

$$\{l_t, x_t\} \in \mathcal{X}_t.$$

The choice set reflects time constraints as well as additional restrictions poten-

this case, we can write $v = a^2 (u(c_1, l_1) + bu(c_2, l_2) + b^2 V')$ and $\tilde{v} = u(c_1, l_1) + \beta u(c_2, l_2) + \beta^2 V'$, where $b = \beta/a < \beta$.

tially imposed by the parent. In turn, the parent's choice of \mathcal{X}_t has to respect technological constraints, i.e., there is a set of feasible choice sets \mathbb{X}_t and the parent must satisfy $\mathcal{X}_t \in \mathbb{X}_t$. The feasible set \mathbb{X}_t may in turn depend on the investments I_t , capturing that restricting or expanding the child's choice may be costly (e.g., time spent monitoring the child). For example, the parent may spend effort to force the child to study more for school and to spend less time playing video games, or the parent may force the child to adopt a particular occupation (e.g., accountant instead of circus performer). Conversely, the parent may expose the child to role models or activities that broaden the range of actions among which the child can choose.⁷

The final set of constraints for both parent and child concern the technology of skill accumulation. The child's skills consist of cognitive skills h_t and noncognitive skills (e.g., preferences, attitudes, and values) a_t . Let $s_t = \{h_t, a_t\}$ denote the entire skill vector of the child. S denotes the skill vector of the parent. Let s_1 denote the initial skill vector of the child. In the first period of childhood, the child's skills evolve as a function of initial conditions, the parent's investment, the environment, and the child's effort x_1 :

$$s_2 = f_1(S, s_1, I_1, d_1, x_1), \quad (6)$$

In the second period (adolescence), we have:

$$S' = f_2(S, s_2, I_2, d_2, x_2), \quad (7)$$

where $S' = \{H', A'\}$ is the child's skill vector at the beginning of adulthood, which in turn determines the child's utility as an adult V' .

We have now all the pieces in place to discuss the three specific elements of the economics of parenting outlined in the introduction. In the following section, we focus on parenting style, which is about how the disagreement between parent and child is resolved. In Section 4 we deal with the technology of skill formation,

⁷The parent's control over the children's choice set relates our model to Bandura's (1986) social cognitive theory. According to this theory, children learn from role models to which they are exposed. Saez Marti (2018) incorporates this notion in an economic model of cultural transmission through endogenous parental influence.

which is about the specific properties of the technology (6)–(7), and how these properties interact with other aspects of parenting. The role of the choice of a neighborhood d_t in parenting is analyzed in Section 6.

3 The Economics of Parenting Style

The framework outlined in the previous section can shed light on a variety of aspects of parent-child interactions. In developmental psychology, starting with the seminal work of Baumrind (1967) the concept of *parenting style* takes a central place in categorizing types of parenting. For us, the choice of parenting style describes the extent to which parents interfere with their children's own inclinations, and how they go about getting children to conform to their own wishes.

3.1 Parenting Styles in the General Model

In the general framework above, consider the child's choices x_t in period $t = 1, 2$, which may include actions such as effort put into studying for school, but also other choices with potential long-run consequences such as drinking alcohol, unprotected sex, and similar risky behaviors. In the analysis of Doepke and Zilibotti (2017), parenting styles come down to whether, and how, parents interfere with the child's choice. If the child can choose x_t freely, she will do this with the objective of maximizing her own utility (2). How will the parent feel about this choice? If the parent is purely altruistic (i.e., if $\gamma = 0$, so that only the altruistic component enters (1)), the parent will necessarily agree. Such a parent simply wants the child to be happy, and hence approves of anything that contributes to the child's happiness. However, if the parent is at least somewhat paternalistic ($\gamma > 0$), there may be disagreement. For example, if the parent places relatively more weight on the child's future relative to the enjoyment of the present, the parent will wish that the child puts more effort into education than what the child would choose of her own accord. Similarly, if the parent's paternalistic preferences incorporate more risk aversion than the child's own utility, the parent may wish that the child stayed away from certain risk-taking activities that the child would like to engage in.

The three traditional parenting styles in developmental psychology can be un-

derstood as archetypes of resolutions of this conflict between parent and child.⁸ The *permissive* parenting style is the scenario where the parent lets the child have her way and refrains from interfering in the choices x_t . The *authoritarian* style is one where the parent imposes her will through coercion. In the model above, coercion (i.e., authoritarian parenting) is captured through the notion of restricting the choice set \mathcal{X}_t . An authoritarian parent chooses a small set \mathcal{X}_t that leaves little or no leeway to the child. The third parenting style, *authoritative* parenting, is also one where the parent aims to affect the child's choice. However, rather than using coercion, an authoritative parent uses persuasion: she shapes the child's preferences a_2 through investments I_1 in the first period of life. For example, such a parent may preach the virtues of patience or the dangers of risk during when the child is little, so that the child ends up with more adult-like preferences when the child's own decisions matter during adolescence.

What determines the tradeoff between these parenting styles? All parenting styles come with costs and benefits. Permissive parenting maximizes the utility of the child, but the child may end up making choices that go against the paternalistic drive of the parent. An authoritarian parent directly influences the child's choice, but this lowers the happiness of the child and may have other repercussions, in particular if there are economic benefits (in terms of the child's future expected utility) to making independent decisions. An authoritative parent also influences the child's choice, but this parenting style requires costly effort on part of the parent and may also reduce the child's welfare. How these tradeoffs are resolved depends in part on the level of paternalism γ . More importantly, for a given level of paternalism what matters are the economic conditions that shape the impact that a given decision will have on the child's future.

3.2 The Impact of Economic Conditions on Parenting Style

We illustrate the interaction between economic conditions and parenting styles with a specialized version of the model in Section 2 where the dimension of child

⁸Sometimes *neglecting* parenting is considered as a fourth parenting style. We abstract from this parenting style here; see Doepke and Zilibotti (2017) for a discussion.

preferences that parents aim to influence is patience.⁹ Patience is a natural starting point for a theory of parent-child transmission of preferences, both because disagreements about how to weigh immediate gratification versus future payoffs is a particularly salient aspect of parent-child interactions, and because patience matters for future-oriented investments such as education.¹⁰ The stylized model is based on our work in Doepke and Zilibotti (2017) and Agostinelli et al. (2019). The model is stripped down to the essential elements needed to bring out the main tradeoffs involved in choosing a parenting style. We abstract from goods consumption and labor supply. For the parent, the period utility function is linear in leisure, given by $L_1 = 1 - X_1$, where X_1 is parenting effort. There is no parenting effort in the second period, so that (ignoring constants) utility (1) takes the form:

$$-X_1 + Z((1 - \gamma)v + \gamma\tilde{v}).$$

For the child, we abstract from utility during the first (early childhood) period. During the second (adolescence) period, the child gets linear utility from leisure l_2 , which depends on the child's vector x_2 of education investments. There is disagreement about the intertemporal tradeoff between the child and the paternalistic parent as in (3) and (4). Given that utility is only derived in the second period, we can rewrite (3) and (4) as:

$$v = a_2 l_2 + \beta V', \tag{8}$$

$$\tilde{v} = l_2 + \beta V', \tag{9}$$

where $a_2 \geq 1$ is the extent to which the child places more weight on fun in the present versus welfare in the future.

Next, we turn to the technology of skill formation. In the first period, the tech-

⁹Models of endogenous patience were first applied by Becker and Mulligan (1997), Doepke and Zilibotti (2005), and Doepke and Zilibotti (2008).

¹⁰See Figlio et al. (2016), Heckman, Stixrud, and Urzua (2006), and Sutter et al. (2013) for evidence at the micro level, and Dohmen et al. (2018) for a country-level analysis of the relationship between patience and development. Doepke and Zilibotti (2017) also consider the transmission of risk preferences, which have been shown by Dohmen et al. (2012) to be strongly correlated between parents and children. Zumbuehl, Dohmen, and Pfann (2013) find that risk attitudes are particularly close for parents who invest a lot in child-rearing effort, which is consistent with the general model of parenting described here.

nology (6) for the accumulation of the skill vector $s_2 = \{h_2, a_2\}$ takes the form:

$$\begin{aligned} h_2 &= f_{h,1}(S, d_1), \\ a_2 &= f_{a,1}(S, X_1, d_1). \end{aligned}$$

That is, the child's cognitive skills in adolescence h_2 evolve passively depending on endowments (represented by the parent's skill vector S) and the environment (represented by the neighborhood quality d_1 , taken as fixed here). We abstract from investment in cognitive skills by both the parent and the child at this stage. Instead, parental involvement is crucial for the acquisition of noncognitive skills, here represented by the child's preference parameter a_2 . In addition to S and d_1 , this parameter depends on the parent's time investment X_1 . Intuitively, increasing the child's patience (here, by lowering the enjoyment of the present a_2) requires a "socialization" effort that is costly in terms of time. In the first period, the parent also chooses the choice set \mathcal{X}_2 that constrains the child's choice in the second period.

In the second period (adolescence), adult skills are formed. At this stage, parents make no further direct investment and the ball is in the child's court. The child is now called on to make decisions x_2 in two dimensions: the choice of an occupation k and an investment in human capital $x_{h,2}$, i.e., $x_2 = \{k, x_{h,2}\}$. The acquisition of adult skills $S' = H'$ hinges on $x_{h,2}$ and the values and skills the child has acquired in the early period:

$$H' = f_{h,2}(S, h_2, d_2, x_{h,2}).$$

Here, H' is strictly increasing in the educational effort $x_{h,2}$.

The occupations k differ in the relative importance of talent and effort. Specifically, each occupation k is defined by a triplet $\{\bar{x}_k, \bar{w}_k, \psi_k\}$ determining the time \bar{x}_k required to learn the basics of the occupation, the basic wage \bar{w}_k in the occupation, and the return ψ_k to human capital H' . The potential income a child would realize in occupation k is given by:

$$\xi_k [\bar{w}_k + (\psi_k H' w_H + (1 - \psi_k H') w_L)],$$

where, ξ_k is an i.i.d. individual talent shock capturing a Roy-model type comparative advantage at different occupations with unit mean and finite variance, and $w_L > 0$ and $w_H > w_L$ capture the overall return to education. The talent shock is realized in the second (adolescence) period, before the child decides on x_2 (so that the child does not face uncertainty), but after the parent's choice of X_1 and \mathcal{X}_2 in the first period.

The setup captures that in some occupations, success hinges primarily on the child's talent and intrinsic motivation (e.g., becoming an artist or an elite sport player), and hence on her choosing something she is good at. Such occupations are characterized by a high variance of the talent shock ξ_k across individuals, but a low return ψ_k to formal education. In other occupations, such as becoming an engineer or a business manager, cognitive human capital, and hence success in education, is more important. In such occupations, the talent shock ξ_k has little variance or may even be constant and the basic wage \bar{w}_k is low, but the return to educational effort ψ_k is high. Professions also differ in how difficult it is to learn the basics; children may find it more pleasant to train to become an actor (low \bar{x}_k) than to study math or economics (high \bar{x}_k). Overall inequality is captured by $w_L > 0$ and $w_H \geq w_L$: when the gap between w_H and w_L is small, both inequality and the return to education are low.

The child chooses the vector x_2 (i.e., the occupation k and educational effort $x_{h,2}$) so as to maximize her own utility (8):

$$\max_{x_2 \in \mathcal{X}_2} a_2 (1 - (x_{h,2} + \bar{x}_k)) + zV',$$

where

$$V' = \xi_k [\bar{w}_k + (\psi_k H' w_H + (1 - \psi_k H') w_L)]$$

and, recall:

$$H' = f_{h,2}(S, h_2, d_2, x_{h,2}).$$

Now consider how economic conditions affect the choice of parenting style. The basic parent-child conflict underlying this choice is that the parent attaches a higher weight to the future utility V' of the child. As a result, the parent would like the child to exert a greater educational effort $x_{h,2}$ than the child would do

on her own accord. While in Doepke and Zilibotti (2017) we allow for intensive margins in parenting (e.g., parents can be more or less authoritative, and more or less authoritarian), here we simplify the analysis by restricting parents to a discrete choice between the three parenting styles: permissive (PE), authoritative (AV), and authoritarian (AR). Each parenting style $P \in \{PE, AV, AR\}$ comes with a specific effort cost X_P for the parent.

The permissive parent PE does not interfere with the child's preferences, so that $a_2 > 1$ and the child gets full enjoyment of adolescence, and also does not restrict the choice of occupation. In principle, a permissive parent might even spend effort to expand the children's choice set, for example by offering more opportunities for entertainment. However, we abstract from this possibility here and set the effort cost of permissive parenting to zero, $X_{PE} = 0$.

The authoritative parent AV does not restrict the child's choice set, but molds her preferences. Specifically, this parent socializes the child into adult-like preferences, $a_2 = 1$. This "indoctrination" reduces in the child's enjoyment of adolescence while inducing her to make more forward-looking choices x_2 , to the extent that the child ends up choosing just what her parent would like her to. Indoctrinating the child requires effort $X_{AV}(S, d_1) > 0$, which is decreasing in both the skill of the parent and the quality of the neighborhood. This assumption reflects that better-educated parents possess superior *soft skills* to persuade their children (e.g., they use more convincing arguments to convince them that working for school is a good idea). In addition, the parental effort can be reinforced by a positive neighborhood culture, including good teachers and peers who share work-oriented values.

Finally, the authoritarian parent AR forces the child into a particular occupation (i.e., the choice set \mathcal{X} given to the child only includes the occupation k preferred by the parent). Authoritarian parents also impose control on the child's effort choice $x_{h,2}$. Imposing these restrictions requires costly monitoring and on the part of the parent, which is captured by a positive effort cost $X_{AR} > 0$. Depending on the parent's skill and the neighborhood, X_{AR} may be larger or smaller than the cost of the authoritative style $X_{AV}(S, d_1)$. Unlike authoritative parents, authoritarian parents do not change their children's preferences. For them, the

Parenting Style	Indoctrinate Child	Restrict Child's Choice	Cost to Parent
Permissive	No ($a_2 > 1$)	No	0
Authoritarian	No ($a_2 > 1$)	Yes	$X_{AR} > 0$
Authoritative	Yes ($a_2 = 1$)	No	$X_{AV}(S, d_1) > 0$

Table 1: Three Parenting Styles in the Model

problem is not what children think but what they do. Therefore, they force them to do as parents like rather than attempt to persuade them of the validity of the adult standpoint. A downside of the authoritarian style is that the parent locks the child into a particular occupation before the child's occupation-specific talent shock is realized.

As an example of this kind of authoritarian parenting, Doepke and Zilibotti (2017) discuss a setting in which parents force their children to stay at home and work in the family business instead of allowing them to move to the city and study. Doepke and Zilibotti (2019) discuss other forms of control over the process of skill formation. For instance, a young child wishing to become a professional soccer player may be denied the opportunity to practice that sport at an early age. Conversely, a child may be forced to play piano or tennis for many hours so as to induce specialization to an extent that it delimits the choice set of the child when this grows up.

Table 1 summarizes the features of the three parenting styles. We can now assess how economic conditions affect the choice between them. Consider, first, a low-inequality society, where the gap between w_H and w_L is small. In such a society, there is limited incentive for children to put effort $x_{h,2}$ into education. Parents are also less concerned about children's effort, and thus there is little scope for disagreement between parents and children. Therefore, most parents adopt a permissive parenting style, namely, they keep young children happy and foster their sense of independence so that they can discover what they are good at in their adult life. There may still be a small fraction of highly paternalistic parents (high γ) who want to influence their children's occupational choice. Among them, those with low skills S will be authoritarian, i.e., resort to restrictions on

the choice set. The downside of this parenting strategy is that it prevents children from learning professions in which they have a strong comparative advantage, *ex post*. For instant, talented painters may become not-so-well-paid engineers. Highly paternalistic parents with high skills S will instead be authoritative.

Consider, next, a high-inequality society. There, the disagreement between parents and children is more salient, because parents would like to see their children work hard in school and choose professions with a high return to human capital. In this society, a larger share of parents will be authoritative, and fewer will be permissive. Moreover, because of the comparative advantage of rich and educated parents in authoritative parenting, there will be a stronger socioeconomic sorting into parenting styles. Since an authoritative parenting style is conducive to more economic success, this sorting will hamper social mobility.

While inequality drives the choice margin between permissive and authoritative parenting style, other factors determine the appeal of authoritarian parenting. In Doepke and Zilibotti (2017), we discuss the role of the return to incumbency. In traditional societies, most children adopt their parents' profession and learn the necessary skills inside the family. Thus, parents have little incentive to be permissive in order to let children discover what they are good at. Nor do they need to spend effort in socializing children into adult-like values (i.e., to be authoritative) since they can achieve the same result by simply monitoring them. As the economy develops, occupational mobility grows, the return to incumbency falls, and the appeal of authoritative parenting declines.

In our model, we can parameterize the value of independence by the variance of the talent shock ξ_k . When this variance is low, the opportunity cost of authoritarian parenting is small. As the variance of ξ_k increases, so does the value of letting children discover their talent. Hence, fewer and fewer parents will be authoritarian and restrict their children's occupational choice.

3.3 Empirical Evidence on Economic Conditions and Parenting Styles

The discussion in the previous section generates a number of testable predictions. In Doepke and Zilibotti (2019), we show that in many industrialized countries, the trend of rising income inequality over recent decades has been accompanied

by more “intensive” (authoritarian or authoritative) parenting, while permissive parenting has declined. Evidence from the Multinational Time Use Study shows that in all countries for which a sufficient number of observations is available (Canada, Italy, the Netherlands, and Spain), time diaries display a significant increase in the time parents spend with their children. For the United States and the Netherlands we have long time series, which makes these two cases especially informative. In both countries, college-educated parents have increased the time spent on child care much more than high-school graduates. In the 1970s, low- and high-educated parents the United States spent about the same time on child care. Today, there is a gap of more than three hours per week between more and less educated parents. Ramey and Ramey (2010), who were the first to note this diverging behavior, suggest that this trend is explained by increased competition for admission to top colleges.

A large share of increase in child care time is related to educational activities. Back in 1976, American couples spent an average of two hours a week on playing, reading, and talking to their children, and about 17 minutes a week on helping them with homework. In 2012, the average went up to six and a half hours a week for playing, reading, and talking to children, and more than 1.5 hours for helping them with homework. Overall, American parents now spend 3.5 times more time on these education-related child care activities. This shift to more intensive and less permissive parenting styles is reflected in children’s experiences. The percentage of kids walking or biking alone to school fell from 41% in 1969 to 13% in 2001. Among 6-to-8-year-old Americans, unsupervised playtime decreased by 25% between 1981 and 1997, whereas time spent on homework more than doubled. This is consistent with parents pushing children towards academic achievement.

This rise in child care time is associated with the widely discussed phenomenon of helicopter parenting, i.e., the trend (especially pronounced among the upper and middle classes) towards an increasingly intrusive and protecting parenting style, with a mix of authoritarian and authoritative elements. In what follows, we relate these trends to changing macroeconomic conditions in areas such as income inequality, the return to education, and redistributive policies, following

the investigation in Doepke and Zilibotti (2017) and Doepke and Zilibotti (2019).

First, we document that parents are less permissive (and, especially, more authoritative) in countries with higher inequality across OECD countries.¹¹ We use information from the World Value Survey (WVS), where people are asked to select five values (out of a list of ten) that children should be encouraged to learn at home.¹² To simplify the discussion of the evidence, we use a binary classification of parenting styles. We classify as *intensive* parents who single out either obedience (a value typically associated with an authoritarian parenting style) or hard work (which is associated with an authoritative parenting style). We classify as *relaxed* those who mention either independence or imagination, and neither obedience nor hard work. Intensive parenting corresponds to a combination of authoritarian and authoritative methods, and relaxed parenting to permissive methods.¹³ This classification covers 91% of a sample of 66,632 respondents from OECD countries. Among them, 63% are classified as intensive, and 37% are classified as relaxed. We exclude from the analysis the 9% of respondents who remain unclassified because they do not mention any of the four above-mentioned values.

We study the correlation between intensive parenting and measures of pre-tax earnings inequality and government-mandated redistribution. In particular, we use: (i) the 90th-to-10th percentile ratio in the pre-tax earnings of full-time dependent employees; (ii) the return to tertiary education (Montenegro and Patrinos 2014); (iii) a measure of tax progressivity that captures the marginal rate progression up to an income level equivalent to four times a country's per capita

¹¹The sample includes all countries with available data that were OECD members as of 1994: Australia, Canada, Finland, France, Germany, Great Britain, Italy, Japan, the Netherlands, New Zealand, Norway, Spain, Sweden, Switzerland, Turkey, and the United States. The cross-country pattern is robust if we include the nine countries with available data that became OECD members after 1994 (Chile, Czech Republic, Estonia, Hungary, Israel, Korea, Mexico, Poland, and Slovenia).

¹²The question is worded as follows: "Here is a list of qualities that children can be encouraged to learn at home. Which, if any, do you consider to be especially important? Please choose up to five!" The values among which parents can choose are independence, hard work, feeling of responsibility, imagination, tolerance and respect for others, thrift and saving money, determination and perseverance, religious faith, unselfishness, and obedience.

¹³In Doepke and Zilibotti (2017) we show that the results are robust to other classifications, such as defining as authoritative all non-authoritarian parents who mention either hard work or determination and perseverance among top five values.

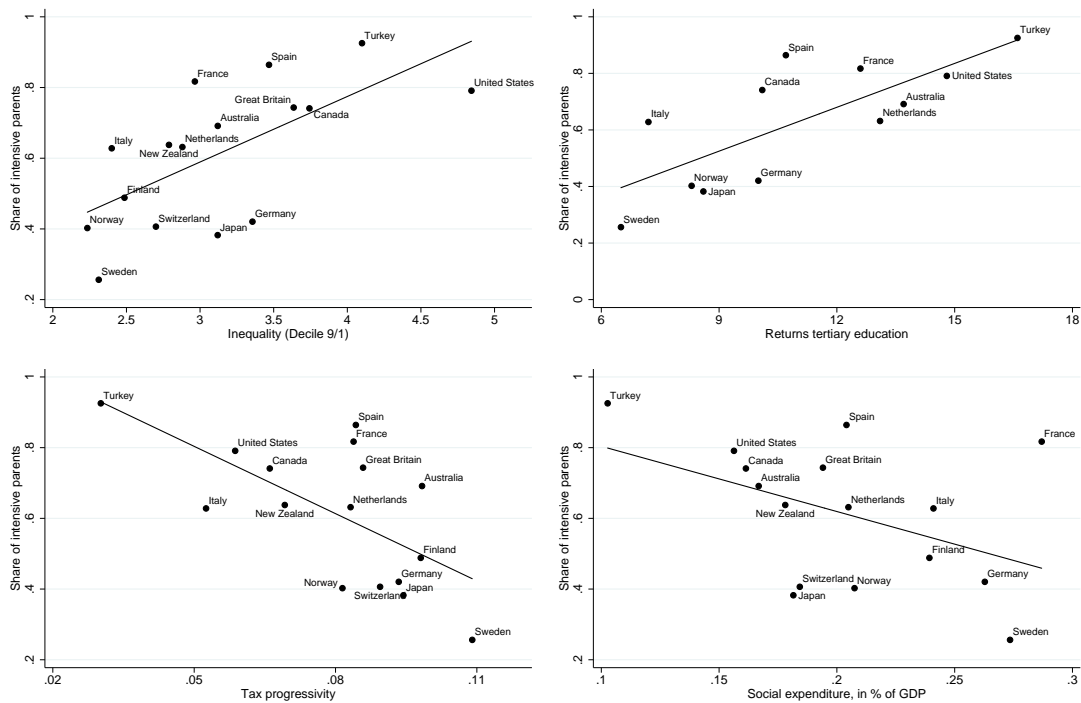


Figure 1: Inequality, Redistribution, and Intensive Parenting across Countries

GDP (Andrew Young School of Policy Studies 2010); (iv) a measure of aggregate social expenditure as a percentage of GDP from the OECD Social Expenditure Database.¹⁴

Figure 1 plots the results for Wave 5 of the World Value Survey, which was carried out in 2005 and which has the largest number of countries. As predicted by the theory, the share of intensive parents increases with pre-tax inequality and the return to education (upper panels) and decreases with the extent of redistribution through tax progressivity and social expenditure. For instance, 79% of American respondents are classified as intensive—and the US has both high earnings inequality and a high return to education, and low tax progressivity and social expenditure. Among the US respondents, 49% are authoritative and 30% are authoritarian in the classification of Doepke and Zilibotti (2017). In contrast, only 26% of the Swedes are intensive parents, whereas 74% are relaxed—and Sweden

¹⁴Note that (iii) and (iv) are inverse measures of inequality.

has low inequality and high redistribution. Countries with moderate inequality such as Germany and Japan fall in between. The overall pattern conforms well with the prediction of the theory for all measures of inequality.

The cross-country results still leave open the possibility that parenting styles are mostly due to some unchanging local tradition, and that the correlation with inequality is due to omitted variables. It is therefore important to verify the results using changes in inequality and parenting styles within countries over time. Here, we focus on changes in pretax earnings inequality, for which we information at a higher frequency. We expect that intensive parenting increases in countries where inequality increases and decreases in countries that become less unequal.

To examine this prediction, we perform regression analysis based on individual data. We estimate the following equation:

$$INT_PAR_{ict} = \alpha_c + \alpha_t + \beta \cdot INEQ_{ct} + X'_{ict} \cdot \gamma + \varepsilon_{ict},$$

where i , c , and t stand for individual, country, and time (wave). The dependent variable INT_PAR is an indicator for parenting style, where $INT_PAR = 1$ means that the parent is intensive, whereas $INT_PAR = 0$ means that the parent is relaxed. Among the right hand-side variables, α_c is a country fixed effect, α_t is a wave fixed effect, $INEQ_{ct}$ is a time-varying measure of inequality (the 90-10 earnings ratio), X is a vector of individual and country characteristics including gender, age, age squared, and the (log of) GDP, and ε is an error term.

We estimate a logistic regression on 45,482 individual observations. Table 2 displays the estimates for β , expressed as odds ratios. All regressions include wave fixed effects with standard errors clustered at the country level. Column (1) displays the basic specification. Column (2) adds the control variables X_{ict} . Column (3) also adds country fixed effects. The odds ratio is significantly larger than unity and stable across specifications. In all cases, higher inequality increases the probability of intensive parenting. In columns (4), (5), and (6), we repeat the analysis while also including the measures of tax progressivity and social expenditure. The results in columns (4) and (5) confirm that each of the three variables of interest has the predicted effect: inequality increases the intensive parenting style,

Table 2: Inequality, Redistribution, and Parenting Styles

	(1)	(2)	(3)	(4)	(5)	(6)
	Logit	Logit	Logit	Logit	Logit	Logit
	Intensive	Intensive	Intensive	Intensive	Intensive	Intensive
Inequality	2.38*** (0.44)	2.50*** (0.29)	2.12** (0.72)	1.74*** (0.37)	1.74*** (0.28)	27.22** (35.21)
Tax progressivity				0.20** (0.13)	0.24** (0.17)	5.35 (5.88)
Social expenditure				0.70 (0.29)	0.58 (0.25)	0.21** (0.14)
Controls	No	Yes	Yes	No	Yes	Yes
Country FE	No	No	Yes	No	No	Yes
Observations	45,482	45,482	45,482	32,196	32,196	32,196

*Dependent variable: intensive parenting style (indicator). All the models are logistic models and the displayed coefficients are odds ratios. All the models include wave fixed effects. Models in Columns (2), (3), (5), and (6) include controls for gender, age, age squared, and log of GDP per capita (based on expenditure-side real GDP at chained PPPs, from Penn World Table 9.0). Models in Columns (3) and (6) also include country fixed effects. Inequality is defined as the ratio between the 90th and 10th percentile of gross earnings of full-time dependent employees. Tax progressivity is from Andrew Young School of Policy Studies (2010). Safety nets are expressed as the aggregate social expenditure as a percentage of GDP. Standard errors (in parentheses) are clustered at the country level. *, **, *** indicate statistical significance at the 10%, 5%, and 1% level, respectively.*

while tax progressivity and social expenditure reduce it (though the effect of the latter is not statistically significant). In the panel regression (6), the three effects are less well identified. The effects of inequality and social expenditure conform with the prediction of the theory, but the odds ratios are very high and low, respectively. Tax progressivity is not statistically significant. The mixed results in regression (6) reflect the limited time variation for the measures of redistribution, which makes it difficult to obtain reliable estimates in fixed-effect regressions.¹⁵

¹⁵All results hold true irrespective of whether we include all respondents or only those who are actually parents. They are also robust to the inclusion of a self-reported dummy for religiosity. Finally, they are robust to an alternative definition of parenting style, where we classify as

The correlations are quantitatively large. Consider, for instance, a hypothetical parent born in a country where the 90-to-10 measure of inequality is three, close to the average for European countries. Suppose the individual characteristics of this parent and the country fixed effect are such that her probability of being intensive is 40% (approximately the average value for countries like Germany, Japan, and Switzerland). Now consider an increase of inequality from three to five, close to the US value, holding other characteristics—including the country fixed effect—constant. Then, the probability for this parent to be intensive increases from 40% to 75%. Although this estimated change cannot be interpreted as causal, this is a large effect, moving the likelihood of being an intensive parent close to the proportion of intensive parents in the United States.

So far, we have focused on the relaxed versus intensive margin (or, equivalently, permissive versus nonpermissive), showing that high inequality turns parents less relaxed. Consider, next, the margin of authoritarian versus nonauthoritarian parenting (i.e., parents who emphasize obedience versus those who don't). In this case, the key variables are (i) whether the effort of children can be easily monitored; (ii) the extent of occupational mobility (which affects the return to independence and hence the choice between authoritarian and authoritative parenting). Two (highly correlated) proxies for macroeconomic conditions that affect this margin are the share of agriculture and the enrollment rate in tertiary education. In traditional agricultural societies, most children live and work under the parents' direct supervision. Moreover, most of them are expected also to become farmers and to learn the skills from their parents. In such societies the return to independence is low. Conversely, in societies where many children receive higher education, they are expected to work hard on their own initiative, as students often live far from their families and must take important independent decisions, such as which subject to major in and how hard to study. Therefore, we should expect parents to be more authoritarian in traditional agricultural societies where the share of enrollment in higher education is low. Figure 2 shows that these predictions are borne out in the data: across countries, the share of authoritarian parents is increasing in the employment share of agriculture and

intensive parents who mention either hard work or determination and perseverance among the preferred parenting values.

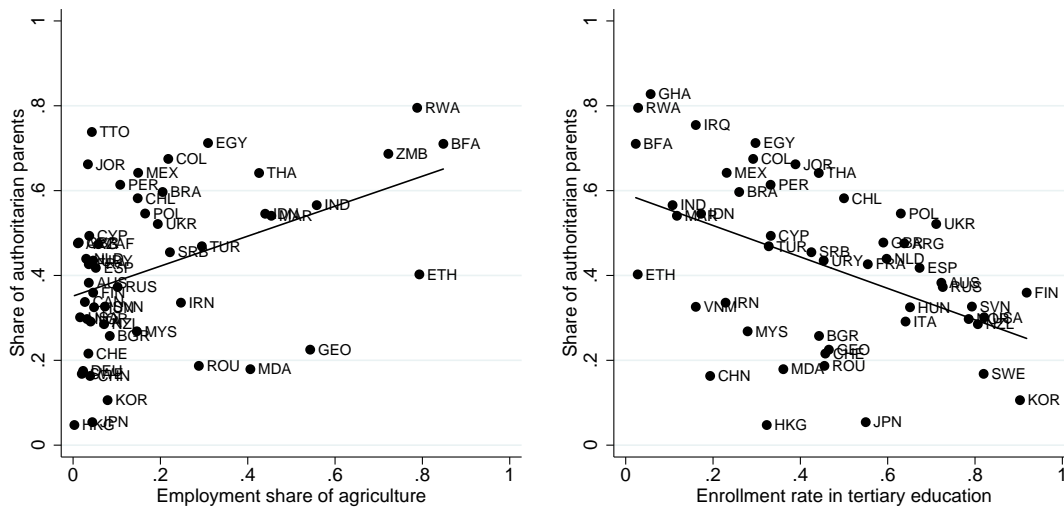


Figure 2: Share of Agriculture, Higher Education, and Authoritarian Parenting decreasing in the enrollment rate in tertiary education.

Doepke and Zilibotti (2019) also examine the effect of religiosity on parenting. They show that religious people are significantly less permissive and more authoritarian than nonreligious people. This finding is consistent with the hypothesis that many traditionally religious parents believe that the world is regulated by a never-changing order, and that it is their duty to transmit to their children an immutable set of values and truths.¹⁶ The result is based on US data from the Child Development Supplement (CDS) of the Panel Study of Income Dynamics (PSID). In the initial survey of the PSID-CDS in 1997, parents are asked whether they have ever spanked their children. In addition, they are asked whether religion is very important in their life. The data set also contains information on parenting styles. Religious parents have a more positive attitude towards corporal punishment: 70% of religious parents report spanking their children, against 58% of non-religious parents. These results are robust to controlling for a variety of socio-economic characteristics such as income or education that may be related

¹⁶According to Bartkowski and Ellison (1995), such parents do not emphasize creativity and intellectual curiosity, but instead believe that "... to succeed in adult roles, children must be trained to embrace the divinely-ordained principles of authority and hierarchy" (p.25). Therefore, religious parents may be more prone to be authoritarian.

to both religiosity and the use of corporal punishment. In addition, non-religious parents are significantly more permissive than religious ones, especially Protestants. The effect is quantitatively large. Consider a nonreligious parent whose probabilities to be permissive, authoritative and authoritarian are, respectively, 50%, 25%, and 25%. The probability for an otherwise identical parent who is an observant Protestant to embrace each of the three parenting styles are, respectively, 30%, 25%, and 45%. Similar patterns are observed in a cross-country analysis based on the WVS.

Overall, the evidence lines up very well with the predictions of our simple model of the economics of parenting. Empirically, economic factors can account for a substantial fraction of the variation in parenting practices over time and across space. Clearly, the results do not rule out that non-economic factors also matter, such as the role of religiosity discussed above. The evidence is also at the level of correlations, and more work towards causal identification is needed to confirm the results. Nevertheless, the results are indicative that the economic approach can be quite successful in explaining what parents do.

3.4 Additional Mechanisms for the Choice of a Parenting Style

The economic literature on parenting has identified additional mechanisms relevant for the choice of a parenting style that are not captured by the model outlined in Section 3.2. Among the earliest contributions is Weinberg (2001), who focuses on the role of monetary incentives in raising children. In his model, richer parents can use monetary rewards to get their children to comply with their wishes. Poor parents lack the resources to do the same, and hence may be more likely to resort to authoritarian methods such as corporal punishment. Hence, the mechanism can contribute to our understanding of the distribution of parenting styles in the population and also help explain the impact of parental income on child achievement.

Another interesting dimension is information frictions. At least initially, children know a lot less than parents do, and part of the challenge of parenting is to convince children of what the parents know is right. Information transmission from parent to child may be distorted for a number of reasons; for example, the child

may mistrust the parent and believe that she is being fed wrong information for strategic reasons (“if you don’t eat your vegetables, you will never grow big!”), or it may simply be difficult to convey complex, tacit, or informal knowledge. In the model of Lizzeri and Siniscalchi (2008), the authors focus on the polar case where the parent is unable to directly convey information, and the child learns entirely from experience. The parent faces a tradeoff between letting the child learn from her own mistakes or correcting the child, but at the cost of inhibiting learning. As in the model above, how much is at stake in these decisions matters for the optimal parenting strategy. In a recent paper, Seror (2019) combines the principal-agent approach followed by Lizzeri and Siniscalchi (2008) with some of the tradeoffs incorporated in the model described in Section 3.2 above.

Other recent studies involving a choice of parenting strategies include Burton, Phipps, and Curtis (2002), who focus on how a parent responds to “bad behavior” by a child; Cobb-Clark, Salamanca, and Zhu (2019), who introduce a distinction between parents’ time and attention as inputs in child rearing; Cosconati (2013), who considers the contrast between a strict and a permissive parenting style in a setting where parent and child disagree on the relative importance of the child’s leisure; Zhang and Ikeda (2016), where a central role is played by a process of habit formation that only the parent is fully aware of; Hao, Hotz, and Jin (2008), who focus on strategic interplay between strict and lenient parenting in families with multiple children; and Lundberg, Romich, and Tsang (2009) and Romich, Lundberg, and Tsang (2009), who analyze the non-cooperative interaction between paternalistic parents and myopic children. Cunha (2015) considers the role of information frictions on the part of parents, who may differ in their subjective assessment of the productivity of different parenting styles. The self-interest of parents takes center stage in Becker, Murphy, and Spenkuch (2016), where parents may attempt to manipulate their children’s preferences in order to receive more support in old age. None of these studies attempt to account for variation in parenting styles across countries and over time. Instead, they introduce a broad range of mechanisms and forces that are potentially relevant in the choice of a parenting style, and that could be included in more encompassing future models of parenting behavior.

4 The Economics of Children's Skill Acquisition

Skills and abilities are important determinants of an individual's life and economic success. In economics, the process of skill acquisition first took center stage in the early literature on human capital that was pioneered by Gary Becker and Jacob Mincer, among others. Initially, the analysis of human capital accumulation was focused on cognitive skills that traditionally have been deemed relevant for shaping outcomes such as education and earnings (Murnane, Willett, and Levy 1995; Cawley, Heckman, and Vytalacil 2001). More recent literature has also shown how noncognitive skills such as perseverance, patience, sociability, and other personality and behavioral traits are important determinants of outcomes in childhood and adulthood (Heckman and Rubinstein 2001; Heckman, Stixrud, and Urzua 2006; Heckman, Pinto, and Savelyev 2013).

Different disciplines such as economics, psychology, and sociology share the view that childhood is a critical period in an individual's life because this is when many of the attributes that will affect adult outcomes are acquired. In economics, the consideration of family influences during childhood was popularized by the work of Becker and Tomes (1979, 1986), who analyze the role of endowments versus investment in the determination of intergenerational mobility. Since then, a large literature has aimed to understand the process through which children acquire skills in detail.

In our parenting model in Section 2, the technology of skill acquisition is represented by equations (6) and (7), reproduced here for easy reference:

$$s_2 = f_1(S, s_1, I_1, d_1, x_1), \quad (10)$$

$$S' = f_2(S, s_2, I_2, d_2, x_2), \quad (11)$$

where the skill vectors during childhood s_t and adulthood (S for the parent, S' for the child) include both cognitive and noncognitive skills. This formulation of skill acquisition already incorporates some central insights of the recent literature on skill acquisition. For example, the technology gives a role to both endowments (represented by the parent's skills S and the child's initial skills s_1) and later investments in skills. Also, the technology allows for investment on part of both

parent (I_t) and child (x_t), and the environment (such as schools, neighborhoods, and peers) also matters (d_t). An important feature of this formulation is that it allows for the cumulative formation of skills. The skills h_2 acquired during childhood are one of the inputs in skill acquisition during adolescence. The model allows for different degrees of complementarity or substitutability of early and late investments in skills.

A focal point of the literature on skill formation is to pin down the technology (10) and (11) in more detail, beyond the general functional form. Some of the central questions in this literature are:

- What is the relative importance of endowments, parental investment, own investment, and the environment for the acquisition of cognitive and noncognitive skills?
- During which phase of childhood are investments in cognitive and noncognitive skills the most effective?
- Are early and late investments in skills complements or substitutes?

All of these issues are relevant for parents who want to decide which parenting style to adopt and how to best invest in the skills of their children. What is more, these questions are also crucial for the design of public policy. The timing of skill acquisition helps determine at what ages public investment in school and child care are likely to be most effective. The issue of substitutability versus complementarity matters for whether early deficits (say, regarding children from socially disadvantaged backgrounds) can be offset by interventions later on (say, training and tutoring during high school) or should be addressed as early as possible. The substitution relationship between parental and other inputs (such as public schooling) determines whether public programs that aim to foster skill acquisition can concentrate on providing public inputs, or whether support and tutoring for parents should be a central plank of such programs.

A large body of research during the last two decades provides answers to many of these questions. Recent comprehensive overviews of this literature are provided by Heckman and Mosso (2014) and Attanasio (2015). Here, we focus on the main insights of this literature and some of the most recent developments.

The work by James Heckman and his coauthors represents a central part of our understanding of the process of skill formation. Building on the framework of Becker and Tomes, this research describes the complex process of skill formation through the formalization of a multistage technology of skill formation. The combination of a theory for the technology of skill formation (Cunha and Heckman 2007) with estimates of the skill production function (Cunha and Heckman 2008; Cunha, Heckman, and Schennach 2010) makes it possible to characterize the process of human development and to rationalize the available empirical evidence. First, as reflected in the technology (10) and (11), skills are multidimensional (Almlund et al. 2011). Cognition and IQ are not the only determinants of success in life; personality traits such as perseverance, conscientiousness, and sociability are equally important in shaping future outcomes. Second, skills are malleable and genetics is only one of the main possible determinants of the set of individual skills and abilities.

Perhaps the most important finding in the recent literature is that early childhood (up to about four years of age) is a crucial phase for skill acquisition. Carneiro and Heckman (2003), Ermisch and Francesconi (2005), and Heckman and Mosso (2014) document that cognitive and noncognitive outcomes are largely shaped early in life.¹⁷ The skill gaps that can be found between individuals from different socio-economic backgrounds opens at very early stages of childhood. Moreover, early interventions have higher returns and are more effective in reducing achievement gaps than later interventions. Later investments are especially ineffective if not anticipated by at least some earlier investments (see Cunha et al. 2006 and Knudsen et al. 2006).

Our theoretical representation of the technology of skill formation (10) and (11) is closely related to Cunha and Heckman (2007). A key feature here is that childhood consists of multiple periods.¹⁸ The model allows for two important features. The first feature is *self-productivity* of human capital. Skills acquired in a

¹⁷Works such as Carneiro and Heckman (2003), Heckman and Masterov (2007), and Cunha et al. (2006) show the important role of parents—through ability and engagement—in producing both cognitive and noncognitive skills.

¹⁸The recognition of different stages of child development was widely acknowledged in the child development literature (Erikson 1950), but initially neglected by the economics of child development.

certain period persist and contribute to the creation of new skills in the following periods. The second feature is *dynamic complementarity*, namely the observation that skills produced at a specific stage of life raise the productivity of investments at later stages. This implies that investments made at different ages foster each other. Moreover, complementarity suggests that early-in-life investments should be followed by later investments in order to increase their productivity.

Empirical evidence on these features is provided by Cunha and Heckman (2008) and Cunha, Heckman, and Schennach (2010). Cunha and Heckman (2008) estimate a linear dynamic factor model to identify the multistage investment technology under the assumption that early and late investments as perfect substitutes. In Cunha, Heckman, and Schennach (2010), a more general nonlinear technology is identified. Estimates are obtained through a dynamic factor model where both cognitive and noncognitive skills are modeled as low-dimensional latent variables. Estimates of these models show clear evidence of self-productivity and complementarity. Self-productivity becomes more evident as the child gets older. For cognitive skills, the complementarity between investments and skills tends to increase over the life cycle. As a result, compensating measures to offset adverse environments are less effective at later ages. Complementarity between noncognitive skills and investments display a different pattern: the estimated effects are similar at different stages of child development, making it easier to intervene with later remediation. Investments are particularly productive for disadvantaged children. The recognition of disadvantaged children as the optimal target for interventions also stands out in the recent study Agostinelli and Wiswall (2016).¹⁹

Another focus of the literature is the importance of household and family characteristics in shaping child development. Many papers such as Duncan et al. (1998), Akee et al. (2010), Bernal and Keane (2011), Dahl and Lochner (2012), Løken, Mogstad, and Wiswall (2012), and Agostinelli and Sorrenti (2018) study the impact of a family's financial constraints on child development. Del Boca, Flinn,

¹⁹Other important contributions to the estimation of the technology of skill formation include Todd and Wolpin (2003, 2007), who model and estimate a dynamic child quality production function for cognitive skills to show the importance of both lagged and contemporaneous inputs on the production of current skills.

and Wiswall (2014) estimate a production technology of child cognitive ability within an explicit model of household choices. Time inputs (both maternal and paternal) are found to be more important than monetary expenses in the child development process. Financial constraints matter more (and monetary transfers to a family are more effective) towards the end of the development process during adolescence. Attanasio et al. (2018) exploit a randomized early childhood intervention in Colombia to estimate the technology of skill acquisition. Consistent with Del Boca, Flinn, and Wiswall (2014), they find that the program led to positive effects on cognitive and socio-emotional development primarily by inducing parents to increase their own investment in child development.²⁰

How does the literature on skill formation relate to the economics of parenting styles? To start, we can view parenting style as yet another input in the production of skills, by distinguishing different kinds of interactions between parents and children. A bigger difference is one of perspective. The literature on skill formation, for the most part, limits itself to estimating a production technology, such as equations (10) and (11) in the model used here. The theory of parenting style outlined in Sections 2 and 3 above, in contrast, formulates a full choice problem in which both parents and children make optimal decisions, given the environment they face. Whereas the skill formation literature primarily asks which skills children will end up with given inputs, the analysis in Section 3 is about explaining *why* parents and children make certain investment decisions. In the parenting style model, a major part of the impact of parents is not through direct investment (the parental inputs I_1 and I_2 in (10) and (11)), but through influencing child's own investment and choices (x_1 and x_2) through authoritarian or authoritative strategies. Combining the two approaches therefore results in a broader perspective on the role of parents for child development.

Conversely, the insights of the literature on skill formation are relevant for formulating better choice models of parenting style. The empirical analysis above was limited to broad classifications of types of parenting. In reality, there are many dimensions to parenting strategies, and parenting evolves over time as the child develops. For instance, the balance between coercion and persuasion in in-

²⁰See also Attanasio, Meghir, and Nix (2017) for a similar model for cognition and health of children aged 0-12 in India.

fluencing children usually varies over time, depending on what is at stake and how the child's skills and abilities evolve. A research approach that combines the findings of the recent literature on skill formation with the choice-based approach of the literature on parenting styles should be productive for providing a deeper understanding of such issues. An explicit model of optimizing behavior of parents and children is also helpful for characterizing how decisions respond to public inputs; for example, in places where excellent public schools exist and schools do not rely on additional investment at home (e.g., there is little homework), parents can relax more compared to places without such features. Lastly, the environment itself is also, to a large extent, a parental choice. Parents can decide in which neighborhood to live, who to socialize with, and which schools their children should attend. This leads to a new set of interactions, which we explore in the next section.

5 The Interaction of Parenting and Neighborhoods in Child Development

In the last decades, an extensive and multidisciplinary literature has studied the importance of neighborhoods in shaping an individual's life opportunities.²¹ Most of the research focuses on children and, especially, children living in poor and distressed areas. Neighborhoods play an important role in part because, especially for older children, much of human capital accumulation takes place in schools, which may vary in quality and organization. Broadly defined neighborhoods also matter because they define the set of labor market opportunities that children face. Most young people start working in the same commuting zone where they grew up. This affects the incentives for parents to adopt different parenting styles and to invest in their skill formation.

More generally, the developmental psychology literature has long pointed out the importance of peers for child development. This is especially true for older children during adolescence, when attachment to parents is loosened and relationships with peers take center stage. These observations do not imply that par-

²¹See Jencks and Mayer (1990) and Sampson, Morenoff, and Gannon-Rowley (2002) for reviews of neighborhood effects.

ents no longer matter once a child enters adolescence; rather, the way in which a parents influence their children shifts gradually from direct interactions to the parents' influence on the environment in which children live. For this reason, an encompassing theory of the economics of parenting should take account of how parents help determine the peers that their children interact with, the schools that they attend, and the neighborhoods that they live in. We first discuss these issues from an empirical perspective, focusing on neighborhood effects in child development. We then outline how a choice of the child's environment can be incorporated in more general models of the economics of parenting.

5.1 Empirical Evidence on Neighborhood Effects in Child Development

Children who grow up in distressed areas tend to reach lower outcomes and display less upward mobility when compared to children from wealthier areas (Brooks-Gunn et al. 1993; Cutler and Glaeser 1997; Chetty et al. 2014). This stylized fact makes the analysis of neighborhood and peer effects a key point of theories of social capital accumulation (Coleman 1988) and human capital externalities and growth (Benabou 1993; Lucas 1988).²² One potential explanation underlying neighborhoods effects (Wilson 1987; Akerlof 1997; Glaeser and Scheinkman 2001) is that children in better neighborhoods are exposed to adults acting as role models who shape. Social networks and peer effects also play a role. For example, higher-income peers may have more information about labor market opportunities to be shared with the surrounding children (once grown up) and their parents (Manski 2000; Durlauf 1996). Neighborhoods may also affect the human capital accumulation process through community resources such as schools or libraries (Jencks and Mayer 1990).

The empirical study of neighborhood effects is a challenging task. If people's location choices are driven in part by unobservable characteristics, measured neighborhood effects based on observational data do not have a causal interpretation. One way to overcome this issue is to look at policies and interventions that

²²Regarding the importance of peer effects, social interactions, and neighborhood effects see also Case and Katz (1991), Borjas (1995), and Glaeser, Sacerdote, and Scheinkman (1996). Econometric issues that arise when there are unobserved neighborhood and individual characteristics in the presence of sorting are addressed in Altonji and Mansfield (2018) and Agrawal, Altonji, and Mansfield (2019).

induce experimental or quasi-experimental relocation of families. Perhaps the most studied intervention in this context is the Moving to Opportunity (MTO) experiment of the US Department of Housing and Urban Development. In the mid-1990s, the MTO program offered vouchers to a randomly selected groups of families living in high-poverty housing projects that allowed them to relocate to areas with lower poverty rates. The experiment took place in the cities of Baltimore, Boston, Chicago, Los Angeles, and New York. Relocation generated large variation in neighborhood composition for otherwise similar families.²³

Katz, Kling, and Liebman (2001) analyze the short-run impacts of the MTO in the city of Boston. While individual economic self-sufficiency was unaffected by the displacement of families from higher to lower poverty areas, treated families experienced improvements in quality of life factors such as health, safety, and children's behavioral outcomes. Kling, Liebman, and Katz (2007) extend the analysis to all five cities involved in the MTO experiment, and confirm the absence of effects on economic self-sufficiency.²⁴ However, unlike in the Boston-only study, adult physical health did not improve in response to the intervention. Other outcomes for youths (such as health and risky behaviors) were differentially affected by gender. Heterogeneous effects of the MTO experiment also arise in the analysis of youth crime and delinquency in Kling, Ludwig, and Katz (2005). Ludwig et al. (2012, 2013) focus on longer-term outcomes and show the MTO experiment positively affected adult mental and physical health and subjective well-being, whereas the impact on economic self-sufficiency or child achievement in education was negligible.

One explanation for the limited measured impact of the MTO experiment is that not only neighborhood characteristics matter, but also when and how long one has lived there. Chetty, Hendren, and Katz (2016) study the duration of exposure to a new neighborhood as a possible determinant of long-term effects on children.²⁵ They find that: (i) moving to a lower-poverty area improves long-term

²³Sanbonmatsu et al. (2011) provide a comprehensive description of the MTO experiment.

²⁴These results are consistent with Oreopoulos (2003), who exploits differences in neighborhood quality of housing projects in Toronto to show little role for neighborhood effects in determining youths' long-term earnings, unemployment status, and dependence on the welfare system.

²⁵Long-term outcomes of disadvantaged children relocated to lower-poverty areas are also the

outcomes of those children who moved at young ages; (ii) the positive effect induced by the move tend to decline with a child's age at move; and (iii) individuals moving during adolescence report negative outcomes induced by the move. Specifically, children moving to less poor areas before the age of 13 considerably increase their earnings in the mid-twenties, are more likely to attend a college (and also a better college), are less likely to live in high-poverty areas, and (for women) are less likely to be single mothers. Conversely, moving when the child is between age 13–18 has small or even negative effects on a child's future outcomes. This finding suggests that the cost of moving (e.g., disruption of social networks and friendships) weighs more heavily once a child has reached adolescence.

The importance of childhood exposure to neighborhoods is further investigated in recent papers studying tax records of millions of US families moving across different areas (Chetty and Hendren 2018a, 2018b). Motivated by evidence that a child's income conditional on parents' income varies substantially with the area in which the child grew up (Chetty et al. 2014), Chetty and Hendren (2018a) exploit variation in the age of children when a family moves from one commuting zone to another to estimate the impact of neighborhoods on intergenerational mobility.²⁶ They find that “on average, spending an additional year in a commuting zone where the mean income rank of children of permanent residents is 1 percentile higher (at a given level of parental income) increases a child's income rank in adulthood by approximately 0.04 percentiles.”²⁷

Chetty and Hendren (2018b) examine the causal effect of each county in the US on children's outcomes in adulthood to provide insights about the mechanism

object of study of Chyn (2018). By exploiting public housing demolition in Chicago during the 1990s, the study shows that moving out of disadvantaged neighborhoods increased a child's employment and earnings in adulthood and reduced arrests for violent crimes.

²⁶The causal interpretation of their results relies on the assumption that the selection effect (e.g., a child's unobservable characteristics) associated with a move to a better neighborhood is invariant with respect to the child's age at the time of the move.

²⁷Interestingly, while in the Chetty, Hendren, and Katz (2016) study of the MTO experiment only young children benefit from a better neighborhood, in Chetty and Hendren (2018a) the neighborhood effect persists until an individual reaches the early twenties. The difference can be rationalized as a consequence of the two different settings: in the MTO experiment movers are compared to non-movers, while Chetty and Hendren (2018a) compare movers across different commuting zones, which nets out fixed disruption costs of moving.

underlying neighborhood effects. Previous analyses by Sampson, Morenoff, and Gannon-Rowley (2002) and Chetty et al. (2014) show correlations between upward mobility and factors such as residential segregation, income inequality, demographic characteristics (fraction of single mothers and racial composition), and the availability of good primary schools. Although these correlations are informative, they fail to disentangle the causal effect of a specific neighborhood from endogenous sorting. The evidence in Chetty and Hendren (2018b) suggests that the association between upward mobility and group-level characteristics such as racial and income segregation or income inequality are mostly driven by the direct effect of neighborhoods, whereas the relation between upward mobility and average individual-level characteristics (such as family structure) are due to sorting.

Summing up, the literature suggests that neighborhoods are important determinants of a child's future opportunities. The understanding of the mechanisms underlying neighborhood effects remains a research priority.²⁸

5.2 Neighborhood Choice in a Model of Parenting

From the perspective of the economics of parenting, the results of this literature suggest that parents have a major impact on their children through determining their environment, including (but not limited to) the choice of which neighborhood to live in. To date, there is little work from a modeling perspective of neighborhood choice as an aspect of parenting, and none that considers how this important dimension of parenting interacts with other parenting choices, such as that of a parenting style. Eckert and Kleineberg (2019) estimate a model of neighborhood choice where the value of the neighborhood is exogenous (and estimated). In Fogli and Guerrieri (2018), endogenous neighborhood effects arise from a human capital spillover. Agostinelli (2018) estimates a dynamic model of skill formation where children choose their own peer groups, and parental

²⁸Another recent contribution to this issue is Gibbons et al. (2013, 2017), who study the determinants of students' educational outcomes in England using a model with neighborhood fixed effects. Neighborhood composition is found to play only a limited role for teenagers' test scores, whereas turnover of same-school-grade students reduces value added for students who stay in their original neighborhood.

investments respond to the children's peer groups (although the choice of neighborhood is not modeled). In our ongoing work Agostinelli et al. (2019), we develop a model of endogenous neighborhood choice and endogenous neighborhood characteristics within a theory of parenting along the lines of the model described in Section 2.

In Agostinelli et al. (2019), there are explicit peer effects and there is endogenous sorting due to endogenous rental costs. To outline the main ideas, consider a version of the model described in Section 2 in which there are two neighborhoods, P (posh) and B (bohemian). Hence, the neighborhood variable d_t that enters the technology of skill formation (6) and (7) satisfies $d_t \in \{P, B\}$. Rental prices $q(d_t)$ which enter the budget constraint (5) may differ across these neighborhoods. The new element is that neighborhood choice and neighborhood quality are endogenous.

In choosing a neighborhood, parents consider their own preferences, the quality of the neighborhood as a place to raise children, and the cost of living in the neighborhood. Parents' own preferences are determined by a random preference shock for neighborhoods. For instance, parents may have a preference for the neighborhood in which they grew up. The quality of the neighborhood is driven by peer effects. As a simple example, suppose the quality of the neighborhood depends on the average skills S of the adult residents. In more elaborate formulations, neighborhood quality can also depend on local public goods, parents' investments I , and the skills s and educational effort x of the local children, that is, peer effects.

The model implies that both parenting and neighborhood choice interact with economic conditions. The model displays a force towards economic segregation: richer parents are more willing and more able to pay high rents in order to provide their children with a good environment. In the basic model, the strength of this force depends primarily on inequality. Consider, first, an environment with low inequality, which could be modeled as a low ratio w_H/w_L in the setup used in Section 3.2. The equilibrium will display some segregation, but only to a limited extent. In particular, there will be one neighborhood where rich people are more likely to live, and another that has more poor people. The poorer households are

deterred from the rich neighborhood due to higher rental costs. Nevertheless, with low inequality the degree of sorting will also be low. If inequality is low, so are the stakes in getting the best possible education for the children. Hence, providing the best possible environment for the children is a relatively weak force in choosing the neighborhood, and for many parents their preference shock (which is uncorrelated with status) will drive the choice. The difference in the rental price across the neighborhoods will also be low, again because parents have a limited willingness to pay for a better environment for their children.

Now consider the same economy but with higher inequality. Parents will now be more concerned about their children's skill accumulation, and consequently the willingness to pay for a better neighborhood goes up. The result is more segregation: there will be less mixing between rich and poor people, and the difference in the rental cost between the neighborhoods will increase. Notice that while here we consider the underlying inequality as an exogenous force, spatial sorting has a self-reinforcing element. As the rich and poor become more separated, the difference in the educational environment in the two neighborhoods (which, recall, we relate to the average skill level S of the local population) will also increase. This further increases the willingness of the rich to pay for living in the better neighborhood.

Another self-reinforcing mechanism works through parents' investments in their children's skill accumulation. If neighborhood quality and parental investments are complementary, increased segregation leads to even stronger parenting investments among the rich, and less investment among the poor in the disadvantaged neighborhood. Such complementarities can arise from a variety of sources. For example, when children have many peers who are strongly focused on educational achievement, they may be more receptive to their parents' efforts compared to an environment where the peer group shows little interest in school. There are also interactions with the choice of parenting style. For instance, in poor and crime-ridden neighborhoods parents are likely to emphasize risk aversion, since many of the risks that are present in the environment (such as juvenile crime and drugs) can have harmful long-term consequences. A side effect is that the children may end up so risk averse that they are less inclined to jump on eco-

conomic opportunities that involve some risk taking. In contrast, in safer middle-class environments parents can afford to be more permissive and risk tolerant, which translates into a more positive attitude of children towards opportunities that present some upside risk.

This discussion shows that even a relatively simple model of neighborhood choice and parenting based on the simple framework presented in Section 2 can address many of the trends over recent decades that we discussed earlier, such as the increase in economic inequality, rising residential segregation, and a rising gap in parental investments between families from different ends of the social spectrum. A better understanding of the mutual interactions that give rise to these trends will be helpful in formulating policy responses that can be used to prevent these trends from accelerating further.

6 Conclusions and Directions for Future Research

The economics of parenting has come a long way since the family first entered the realm of economics with the work of Gary Becker. Economic models turn out to be remarkably successful at explaining many dimensions of what parents do, ranging from fertility choice (which we did not discuss in detail here) and parenting style to the choice of a neighborhood for the family to live. There has also been tremendous progress on understanding the technology of children's skill formation. The findings of this literature already play a crucial role in policy making; for example, the observation that many important skills are acquired during the first years of life has led to calls for more support for high-quality daycare and preschool, which is now being implemented in many places. As this example shows, the economics of parenting takes a central place in some major policy challenges of this age. Rising inequality, increased segregation, low social mobility, and more generally increased polarization in society are trends that most industrialized countries confront today. Further research on the economics of parenting will help advance our understanding of the root causes of these trends, and can clarify options for public policy to address the resulting challenges.

There are many remaining research challenges for the economics of parenting.

One example is the measurement of parenting styles. Existing measures, which derive from developmental psychology, only provide a broad classification, and different approaches can be incompatible with each other. It would be fruitful to combine detailed time-use data with other information on the relationships of parents and children to construct more finely graded measures that map more directly into economic models of parenting.

A broader challenge for future work is to combine the three strands of research on the economics of parenting discussed here. Until now, the economics of parenting style, the technology of skill formation, and the role of neighborhood effects have been mostly studied in isolation. But clearly these dimensions are closely related: parenting style is a crucial input in skill formation, and so is the choice of a neighborhood. Conversely, the neighborhood in which a family lives, and hence the risks and opportunities that a child is exposed to, matter for the choice of a parenting style. One recent paper that combines two of these elements is Deckers et al. (2017), who relate socio-economic differences among children in IQ, patience, and other economic preferences to parental and family characteristics, parental time investments, and parenting style, and show that parenting style and time investments play distinct roles. There is a lot of scope for future work that takes interactions between the different aspects of the economics of parenting into account.

Another limitation of existing research is that most theoretical models of parent-child interaction focus on the case of a single parent and a single child. In reality there are two biological parents, but many children live with a single parent, and stepparents are also present in many families. It would be fruitful to take more account of interactions between multiple parents and caregivers in economic models of parenting. Likewise, in many families there are multiple children, and we know from empirical work that birth order is an important determinant of children's outcomes (Black, Devereux, and Salvanes 2005). For parents, it quickly becomes apparent that the choice of parenting style for, say, the third child is more constrained than for the first, given the competing needs of the older children (see Hao, Hotz, and Jin 2008). Children also come with their own personalities (and genders), and parents use different strategies with different children

in response to their characteristics. A lot of productive research could be done extending theoretical models of parenting beyond the single-parent, single-child case to capture the multifaceted interactions between many family members.²⁹

Beyond refining the economics of parenting, more research is also needed to assess the implications of changes in parenting for broader economic issues. For example, if parenting gets more time-intensive, we might expect fertility rates to fall. The general relationship between investment in children and fertility is a major topic in the economics of fertility (i.e., the quantity-quality tradeoff), but we are not aware of work that makes a direct connection between a rising intensity of parenting and the currently very low fertility rates in many industrialized countries (Doepke and Kindermann 2018), that reconsiders the income-fertility gradient from the perspective of parenting decisions, or that formulates a joint decision problem involving fertility and parenting style. Parenting also interacts with labor supply and careers, especially for mothers (Adda, Dustmann, and Stevens 2017). Recent research on the gender wage gap has identified motherhood as the primary reason for why women still get paid less than men (Kleven, Landais, and Sogaard 2018, Gallen 2018). For the impact of parenthood on careers, choices such as parenting style and time use on parenting are surely important, which is another connection not yet explored in the literature.

Lastly, given the central role of parenting for the accumulation of skills and human capital, the economics of parenting is highly relevant for macroeconomic issues such the dynamics of inequality, intergenerational mobility, and overall economic growth. There are only few papers that take recent advances in research on the technology of skill formation into account while developing multi-generation models to study determinants of the intergenerational transmission of economic status (Yum 2015, Caucutt and Lochner 2017, Lee and Seshadri 2019). We are aware of only a single paper, namely Daruich (2018), that examines the importance of early investments in children, a major theme in literature on the technology of skill formation, for the evolution of inequality and growth in a dynamic macroeconomic model. In the future, we expect that macroeconomic

²⁹Two recent examples of work along these lines are Blandin and Herrington (2018), who consider the impact of family structure and early family investments on college completion rates, and Gayle, Golan, and Soyatas (2015), who analyze racial differences in human capital accumulation.

modeling will be one of the areas to particularly benefit from ongoing research on the economics of parenting.

References

- Adda, Jérôme, Christian Dustmann, and Katrien Stevens. 2017. "The Career Costs of Children." *Journal of Political Economy* 125 (2): 293–337.
- Agostinelli, Francesco. 2018. "Investing in Children's Skills: An Equilibrium Analysis of Social Interactions and Parental Investments." Unpublished Manuscript, Arizona State University.
- Agostinelli, Francesco, Matthias Doepke, Giuseppe Sorrenti, and Fabrizio Zilibotti. 2019. "It Takes a Village: The Economics of Parenting with Neighborhood and Peer Effects." Unpublished Manuscript, Yale University.
- Agostinelli, Francesco, and Giuseppe Sorrenti. 2018. "Money vs. Time: Family Income, Maternal Labor Supply, and Child Development." HCEO Working Paper 2018-017.
- Agostinelli, Francesco, and Matthew Wiswall. 2016. "Estimating the Technology of Children's Skill Formation." NBER Working Paper 22442.
- Agrawal, Mohit, Joseph G. Altonji, and Richard K. Mansfield. 2019. "Quantifying Family, School, and Location Effects in the Presence of Complementarities and Sorting." *Journal of Labor Economics* 37 (S1): S11–S83.
- Akee, Randall K. Q., William E. Copeland, Gordon Keeler, Adrian Angold, and E. Jane Costello. 2010. "Parents' Incomes and Children's Outcomes: A Quasi-experiment Using Transfer Payments from Casino Profits." *American Economic Journal: Applied Economics* 2 (1): 86–115.
- Akerlof, George A. 1997. "Social Distance and Social Decisions." *Econometrica* 65 (5): 1005–1027.
- Almlund, M., A. Duckworth, J. J. Heckman, and T. Kautz. 2011. "Personality Psychology and Economics." In *Handbook of the Economics of Education, Vol. 4*, edited by E. A. Hanushek, S. Machin, and L. Woessmann. Amsterdam: Elsevier.

- Altonji, Joseph G., and Richard K. Mansfield. 2018. "Estimating Group Effects Using Averages of Observables to Control for Sorting on Unobservables: School and Neighborhood Effects." *American Economic Review* 108 (10): 2902–46.
- Andrew Young School of Policy Studies. 2010. *Andrew Young School World Tax Indicators*. Atlanta, GA: International Studies Program <https://aysps.gsu.edu/isp/wti.html> (accessed: January 17, 2017).
- Attanasio, Orazio. 2015. "The Determinants of Human Capital Formation During the Early Years of Life: Theory, Measurement, and Policies." *Journal of the European Economic Association* 13 (6): 949–97.
- Attanasio, Orazio, Sarah Cattan, Emla Fitzsimmons, Costas Meghir, and Marta Rubio-Codina. 2018. "Estimating the Production Function for Human Capital: Results from a Randomized Controlled Trial in Colombia." IFS Working Paper W18/18.
- Attanasio, Orazio, Costas Meghir, and Emily Nix. 2017. "Human Capital Development and Parental Investment in India." NBER Working Paper 21740.
- Bandura, Albert. 1986. *Social Foundations of Thought and Actions*. Prentice Hall.
- Barro, Robert J., and Gary S. Becker. 1989. "Fertility Choice in a Model of Economic Growth." *Econometrica* 57 (2): 481–501.
- Bartkowski, John P., and Christopher G. Ellison. 1995. "Divergent Models of Childrearing in Popular Manuals: Conservative Protestants vs. the Mainstream Experts." *Sociology of Religion* 56 (1): 21–34.
- Baumrind, Diana. 1967. "Child Care Practices Anteceding Three Patterns of Preschool Behavior." *Genetic Psychology Monographs* 75 (1): 43–88.
- Becker, Gary S. 1960. "An Economic Analysis of Fertility." *Demographic and Economic Change in Developed Countries*. Princeton: Princeton University Press.
- . 1981. *A Treatise on the Family*. Harvard University Press.
- Becker, Gary S., and Robert J. Barro. 1988. "A Reformulation of the Economic Theory of Fertility." *Quarterly Journal of Economics* 103 (1): 1–25.

- Becker, Gary S., and Casey B. Mulligan. 1997. "The Endogenous Determination of Time Preference." *Quarterly Journal of Economics* 112 (3): 729–58.
- Becker, Gary S., Kevin M. Murphy, and Jörg L. Spenkuch. 2016. "The Manipulation of Children's Preferences, Old Age Support, and Investment in Children's Human Capital." *Journal of Labor Economics* 34 (S2): S3–S30.
- Becker, Gary S., and Nigel Tomes. 1979. "An Equilibrium Theory of the Distribution of Income and Intergenerational Mobility." *Journal of Political Economy* 87 (6): 1153–1189.
- . 1986. "Human Capital and the Rise and Fall of Families." *Journal of Labor Economics* 4 (3): S1–S39.
- Benabou, Roland. 1993. "Workings of a City: Location, Education, and Production." *Quarterly Journal of Economics* 108 (3): 619–652.
- Bernal, Raquel, and Michael P. Keane. 2011. "Child Care Choices and Children's Cognitive Achievement: The Case of Single Mothers." *Journal of Labor Economics* 29 (3): 459–512.
- Bisin, Alberto, and Thierry Verdier. 2001. "The Economics of Cultural Transmission and the Dynamics of Preferences." *Journal of Economic Theory* 97 (2): 298–319.
- . 2010. "The Economics of Cultural Transmission and Socialization." Chapter 9 of *Handbook of Social Economics*, edited by Jess Benhabib, Alberto Bisin, and Matthew O. Jackson, Volume 1A. Amsterdam: Elsevier.
- Black, Sandra E., Paul J. Devereux, and Kjell G. Salvanes. 2005. "The More the Merrier? The Effect of Family Size and Birth Order on Children's Education." *Quarterly Journal of Economics* 120 (2): 669–700.
- Blandin, Adam, and Christopher Herrington. 2018. "Family Structure, Human Capital Investment, and Aggregate College Attainment." Unpublished Manuscript, Virginia Commonwealth University.
- Borjas, George J. 1995. "Ethnicity, Neighborhoods, and Human-Capital Externalities." *American Economic Review* 85 (3): 365–390.

- Brooks-Gunn, Jeanne, Greg J. Duncan, Pamela Kato Klebanov, and Naomi Sealand. 1993. "Do Neighborhoods Influence Child and Adolescent Development?" *American Journal of Sociology* 99 (2): 353–395.
- Browning, Martin, Pierre-André Chiappori, and Yoram Weiss. 2014. *Economics of the Family*. Cambridge University Press.
- Burton, Peter, Shelley Phipps, and Lori Curtis. 2002. "All in the Family: A Simultaneous Model of Parenting Style and Child Conduct." *American Economic Review* 92 (2): 368–372.
- Carneiro, Pedro, and J. J. Heckman. 2003. "Human Capital Policy." In *Inequality in America: What Role for Human Capital Policies*, edited by James J. Heckman and Alan B. Krueger. Cambridge, MA: MIT Press.
- Case, A., and L. F. Katz. 1991. "The Company You Keep: The Effects of Family and Neighborhood on Disadvantaged Youths." NBER Working Paper 3705.
- Caucutt, Elizabeth M., and Lance Lochner. 2017. "Early and Late Human Capital Investments, Borrowing Constraints, and the Family." CHCP Working Paper 2017-3, University of Western Ontario.
- Cawley, John, James J. Heckman, and Edward J. Vytlačil. 2001. "Three Observations on Wages and Measured Cognitive Ability." *Labour Economics* 8 (4): 419–442.
- Chetty, Raj, and Nathaniel Hendren. 2018a. "The Impacts of Neighborhoods on Intergenerational Mobility I: Childhood Exposure Effects." *Quarterly Journal of Economics* 133 (3): 1107–1162.
- . 2018b. "The Impacts of Neighborhoods on Intergenerational Mobility II: County-Level Estimates." *Quarterly Journal of Economics* 133 (3): 1163–1228.
- Chetty, Raj, Nathaniel Hendren, and Lawrence F. Katz. 2016. "The Effects of Exposure to Better Neighborhoods on Children: New Evidence from the Moving to Opportunity Experiment." *American Economic Review* 106 (4): 855–902.
- Chetty, Raj, Nathaniel Hendren, Patrick Kline, and Emmanuel Saez. 2014. "Where is the land of Opportunity? The Geography of Intergenerational Mobility in the United States." *Quarterly Journal of Economics* 129 (4): 1553–1623.

- Chiappori, Pierre-André, Bernard Salanié, and Yoram Weiss. 2017. "Partner Choice, Investment in Children, and the Marital College Premium." *American Economic Review* 107 (8): 2109–67.
- Chyn, Eric. 2018. "Moved to Opportunity: The Long-Run Effects of Public Housing Demolition on Children." *American Economic Review* 108 (10): 3028–56.
- Cobb-Clark, Deborah A., Nicolas Salamanca, and Anna Zhu. 2019. "Parenting Style as an Investment in Human Development." Forthcoming, *Journal of Population Economics*.
- Coleman, James S. 1988. "Social Capital in the Creation of Human Capital." *American Journal of Sociology* 94:S95–S120.
- Cosconati, Marco. 2013. "Optimal Parenting Styles: Evidence from a Dynamic Game with Multiple Equilibria." Unpublished Manuscript, Bank of Italy.
- Cunha, Flavio. 2015. "Subjective Rationality, Parenting Styles, and Investments in Children." Chapter 6 of *Families in an Era of Increasing Inequality*, edited by P.R. Amato et al. Springer.
- Cunha, Flavio, and James J. Heckman. 2007. "The Technology of Skill Formation." *American Economic Review* 97 (2): 31–47.
- . 2008. "Formulating, identifying, and estimating the technology for the formation of skills." *Journal of Human Resources* 43 (4): 738–782.
- Cunha, Flavio, James J. Heckman, Lance Lochner, and Dimitriy V. Masterov. 2006. "Interpreting the Evidence on Life Cycle Skill Formation." In *Handbook of the Economics of Education, Vol. 1*, edited by E. A. Hanushek and F. Welch. Amsterdam: Elsevier.
- Cunha, Flavio, James J. Heckman, and Susanne M. Schennach. 2010. "Estimating the Technology of Cognitive and Noncognitive Skill Formation." *Econometrica* 78 (3): 883–931.
- Cutler, David M., and Edward L. Glaeser. 1997. "Are Ghettos Good or Bad?" *Quarterly Journal of Economics* 112 (3): 827–872.

- Dahl, Gordon B., and Lance Lochner. 2012. "The Impact of Family Income on Child Achievement: Evidence from the Earned Income Tax Credit." *American Economic Review* 102 (5): 1927–1956.
- Daruich, Diego. 2018. "The Macroeconomic Consequences of Early Childhood Development Policies." Unpublished Manuscript, NYU.
- Deckers, Thomas, Armin Falk, Fabian Kosse, Pia Pinger, and Hannah Schildberg-Hörisch. 2017. "Socio-Economic Status and Inequalities in Children's IQ and Economic Preferences." IZA Discussion Paper 11158.
- Del Boca, Daniela, Christopher Flinn, and Matthew Wiswall. 2014. "Household Choices and Child Development." *Review of Economic Studies* 81 (1): 137–185.
- Doepke, Matthias. 2015. "Gary Becker on the Quantity and Quality of Children." *Journal of Demographic Economics* 81 (1): 59–66.
- Doepke, Matthias, and Fabian Kindermann. 2018. "Bargaining over Babies: Theory, Evidence, and Policy Implications." NBER Working Paper 22072.
- Doepke, Matthias, and Michèle Tertilt. 2016. "Families in Macroeconomics." Chapter 23 of *Handbook of Macroeconomics*, edited by John B. Taylor and Harald Uhlig, Volume 2 of *Handbook of Macroeconomics*, 1789–1891. Elsevier.
- Doepke, Matthias, and Fabrizio Zilibotti. 2005. "Social Class and the Spirit of Capitalism." *Journal of the European Economic Association* 3 (2-3): 516–24.
- . 2008. "Occupational Choice and the Spirit of Capitalism." *Quarterly Journal of Economics* 123 (2): 747–93.
- . 2017. "Parenting with Style: Altruism and Paternalism in Intergenerational Preference Transmission." *Econometrica* 85 (5): 1331–1371.
- . 2019. *Love, Money, and Parenting: How Economics Explains the Way We Raise Our Kids*. Princeton, New Jersey: Princeton University Press.
- Dohmen, Thomas, Benjamin Enke, Armin Falk, David Huffman, and Uwe Sunde. 2018. "Patience and Contemporary Development." Unpublished Manuscript, University of Bonn.
- Dohmen, Thomas, Armin Falk, David Huffman, and Uwe Sunde. 2012. "The

- Intergenerational Transmission of Risk and Trust Attitudes." *Review of Economic Studies* 79 (2): 645–77.
- Duncan, Greg J., W. Jean Yeung, Jeanne Brooks-Gunn, and Judith R. Smith. 1998. "How Much Does Childhood Poverty Affect the Life Chances of Children?" *American Sociological Review* 63 (3): 406–423.
- Durlauf, Steven N. 1996. "A Theory of Persistent Income Inequality." *Journal of Economic Growth* 1 (1): 75–93.
- Eckert, Fabian, and Tatjana Kleineberg. 2019. "Can We Save the American Dream? A Dynamic General Equilibrium Analysis of the Effects of School Financing on Local Opportunities." Unpublished Manuscript, Yale University.
- Erikson, Erik H. 1950. *Childhood and society*. New York: Norton.
- Ermisch, J., and M. Francesconi. 2005. "Parental Employment and Children's Welfare." In *Women at Work: An Economic Perspective*, edited by T. Boeri, D. Del Boca, and C. Pissarides. Oxford: Oxford University Press.
- Figlio, David, Paola Giuliano, Umut Özek, and Paola Sapienza. 2016. "Long-Term Orientation and Educational Performance." NBER Working Paper 22541.
- Fogli, Alessandra, and Veronica Guerrieri. 2018. "The End of the American Dream? Inequality and Segregation in US Cities." Unpublished Manuscript, University of Chicago.
- Gallen, Yana. 2018. "Motherhood and the Gender Productivity Gap." Unpublished Manuscript, University of Chicago.
- Gayle, George-Levi, Limor Golan, and Mehmet A. Soytaş. 2015. "What Accounts for the Racial Gap in Time Allocation and Intergenerational Transmission of Human Capital?" Working papers 2015-18, Federal Reserve Bank of St. Louis.
- Gibbons, Stephen, Olmo Silva, and Felix Weinhardt. 2013. "Everybody Needs Good Neighbours? Evidence from Students' Outcomes in England." *Economic Journal* 123 (571): 831–874.

- . 2017. “Neighbourhood Turnover and Teenage Attainment.” *Journal of the European Economic Association* 15 (4): 746–783.
- Glaeser, E., and J. Scheinkman. 2001. “Measuring social interactions.” In *Social Dynamics*, edited by S. Durlauf and P. Young, 83–130. Boston, MA: MIT Press.
- Glaeser, Edward L., Bruce Sacerdote, and José A. Scheinkman. 1996. “Crime and Social Interactions.” *Quarterly Journal of Economics* 111 (2): 507–548.
- Greenwood, Jeremy, Nezih Guner, and Guillaume Vandembroucke. 2017. “Family Economics Writ Large.” *Journal of Economic Literature* 55 (4): 1346–1434.
- Hao, Lingxin, V. Joseph Hotz, and Ginger Z. Jin. 2008. “Games Parents and Adolescents Play: Risky Behaviour, Parental Reputation and Strategic Transfers.” *Economic Journal* 118 (528): 515–55.
- Heckman, James J., and Dimitriy V. Masterov. 2007. “The Productivity Argument for Investing in Young Children.” *Review of Agricultural Economics* 29 (3): 446–493.
- Heckman, James J., and Stefano Mosso. 2014. “The Economics of Human Development and Social Mobility.” *Annual Review of Economics* 6 (1): 689–733.
- Heckman, James J., Rodrigo Pinto, and Peter A. Savelyev. 2013. “Understanding the Mechanisms through Which an Influential Early Childhood Program Boosted Adult Outcomes.” *American Economic Review* 103 (6): 2052–86.
- Heckman, James J., and Yona Rubinstein. 2001. “The Importance of Noncognitive Skills: Lessons from the GED Testing Program.” *American Economic Review* 91 (2): 145–149.
- Heckman, James J., Jora Stixrud, and Sergio Urzua. 2006. “The Effects of Cognitive and Noncognitive Abilities on Labor Market Outcomes and Social Behavior.” *Journal of Labor Economics* 24 (3): 411–82.
- Hotz, V. Joseph, Jacob Alex Klerman, and Robert J. Willis. 1997. “The Economics of Fertility in Developed Countries.” *Handbook of Population and Family Economics* 1:275–347.
- Jencks, Christopher, and Susan E. Mayer. 1990. “The Social Consequences of Growing Up in a Poor Neighborhood.” In *Inner-City Poverty in the United*

- States*, edited by E. Lynn Jr. Laurence and Michael G. H. McGeary, 111–185. Washington, DC: National Academies Press.
- Katz, Lawrence F., Jeffrey R. Kling, and Jeffrey B. Liebman. 2001. “Moving to Opportunity in Boston: Early Results of a Randomized Mobility Experiment.” *Quarterly Journal of Economics* 116 (2): 607–654.
- Kleven, Henrik, Camille Landais, and Jakob Egholt Sogaard. 2018. “Children and Gender Inequality: Evidence from Denmark.” NBER Working Paper 24219.
- Kling, Jeffrey R., Jens Ludwig, and Lawrence F. Katz. 2005. “Neighborhood Effects on Crime for Female and Male Youth: Evidence from a Randomized Housing Voucher Experiment.” *Quarterly Journal of Economics* 120 (1): 87–130.
- Kling, Jeffrey R, Jeffrey B Liebman, and Lawrence F Katz. 2007. “Experimental Analysis of Neighborhood Effects.” *Econometrica* 75 (1): 83–119.
- Knudsen, Eric I., James J. Heckman, Judy L. Cameron, and Jack P. Shonkoff. 2006. “Economic, Neurobiological, and Behavioral Perspectives on Building America’s Future Workforce.” *Proceedings of the National Academy of Sciences* 103 (27): 10155–10162.
- Lee, Sang Yoon, and Ananath Seshadri. 2019. “On the Intergenerational Transmission of Economic Status.” Forthcoming, *Journal of Political Economy*.
- Lizzeri, Alessandro, and Marciano Siniscalchi. 2008. “Parental Guidance and Supervised Learning.” *Quarterly Journal of Economics* 123 (3): 1161–95.
- Løken, Katrine V., Magne Mogstad, and Matthew Wiswall. 2012. “What Linear Estimators Miss: The Effects of Family Income on Child Outcomes.” *American Economic Journal: Applied Economics* 4 (2): 1–35.
- Lucas, Robert E. 1988. “On the Mechanics of Economic Development.” *Journal of Monetary Economics* 22 (1): 3–42.
- Ludwig, Jens, Greg J. Duncan, Lisa A. Gennetian, Lawrence F. Katz, Ronald C. Kessler, Jeffrey R. Kling, and Lisa Sanbonmatsu. 2012. “Neighborhood Effects on the Long-Term Well-Being of Low-Income Adults.” *Science* 337 (6101): 1505–1510.

- . 2013. “Long-Term Neighborhood Effects on Low-Income Families: Evidence from Moving to Opportunity.” *American Economic Review* 103 (3): 226–31.
- Lundberg, Shelly, and Robert A. Pollak. 2007. “The American Family and Family Economics.” *Journal of Economic Perspectives* 21 (2): 3–26.
- Lundberg, Shelly, Robert A. Pollak, and Jenna Stearns. 2016. “Family Inequality: Diverging Patterns in Marriage, Cohabitation, and Childbearing.” *Journal of Economic Perspectives* 30 (2): 79–102.
- Lundberg, Shelly, Jennifer L. Romich, and Kwok Ping Tsang. 2009. “Decision-Making by Children.” *Review of Economics of the Household* 7(1):1–30.
- Manski, Charles F. 2000. “Economic Analysis of Social Interactions.” *Journal of Economic Perspectives* 14 (3): 115–136.
- Montenegro, Claudio E., and Harry Anthony Patrinos. 2014. “Comparable Estimates of Returns to Schooling Around the World.” World Bank Policy Research Working Paper WPS 7020.
- Murnane, Richard J., John B. Willett, and Frank Levy. 1995. “The Growing Importance of Cognitive Skills in Wage Determination.” *The Review of Economics and Statistics* 77 (2): 251–266.
- Oreopoulos, Philip. 2003. “The Long-Run Consequences of Living in a Poor Neighborhood.” *Quarterly Journal of Economics* 118 (4): 1533–1575.
- Ramey, Garey, and Valerie A. Ramey. 2010. “The Rug Rat Race.” *Brookings Papers on Economic Activity* Spring:129–76.
- Romich, Jennifer L., Shelly Lundberg, and Kwok P. Tsang. 2009. “Independence Giving or Autonomy Taking? Childhood Predictors of Decision-Sharing Patterns Between Young Adolescents and Parents.” *Journal of Research on Adolescence* 19 (4): 587–600.
- Saez Marti, Maria. 2018. “Observational Learning and Parental Influence.” Unpublished Manuscript, Yale University.
- Sampson, Robert J., Jeffrey D. Morenoff, and Thomas Gannon-Rowley. 2002. “Assessing “Neighborhood Effects”: Social Processes and New Directions in Research.” *Annual Review of Sociology* 28 (1): 443–478.

- Sanbonmatsu, Lisa, Jens Ludwig, Lawrence F. Katz, Lisa A. Gennetian, Greg J. Duncan, Ronald C. Kessler, Emma Adam, Thomas W. McDade, and Stacy Tessler Lindau. 2011. *Moving to Opportunity for Fair Housing Demonstration Program: Final Impacts Evaluation*. Washington, DC: US Department of Housing and Urban Development, Office of Policy Development and Research.
- Seror, Avner. 2019. "Intergenerational Rearing and the Transmission of a Cultural Cognition." Unpublished Manuscript, Chapman University.
- Sutter, Matthias, Martin G. Kocher, Daniela Glaetze-Ruetzler, and Stefan T. Trautmann. 2013. "Impatience and Uncertainty: Experimental Decisions Predict Adolescents' Field Behavior." *American Economic Review* 103 (1): 510–31.
- Todd, Petra E., and Kenneth I. Wolpin. 2003. "On the Specification and Estimation of the Production Function for Cognitive Achievement." *Economic Journal* 113 (485): F3–F33.
- . 2007. "The Production of Cognitive Achievement in Children: Home, School, and Racial Test Score Gaps." *Journal of Human Capital* 1 (1): 91–136.
- Weinberg, Bruce A. 2001. "An Incentive Model of the Effect of Parental Income on Children." *Journal of Political Economy* 109 (2): 266–80.
- Wilson, William J. 1987. *The Truly Disadvantaged: The Inner City, the Underclass, and Public Policy*. Chicago: University of Chicago Press.
- Yum, Minchul. 2015. "Parental Time Investment and Intergenerational Mobility." Unpublished Manuscript, University of Mannheim.
- Zhang, Lin, and Shinsuke Ikeda. 2016. "Welfare-enhancing Parental Altruism and Children's Habit Formation." *International Review of Economics* 63 (3): 281–303.
- Zumbuehl, Maria, Thomas Dohmen, and Gerard Pfann. 2013. "Parental Investment and the Intergenerational Transmission of Economic Preferences and Attitudes." IZA Discussion Paper 7476.