

NBER WORKING PAPER SERIES

MANAGING CREDIT BUBBLES

Alberto Martin
Jaume Ventura

Working Paper 19960
<http://www.nber.org/papers/w19960>

NATIONAL BUREAU OF ECONOMIC RESEARCH
1050 Massachusetts Avenue
Cambridge, MA 02138
March 2014

A previous version of this paper was circulated under the title "Bubbly Collateral and Economic Activity". We thank seminar participants at various institutions and Zeno Enders, Raquel Fernandez, Bernardo Guimaraes, Zhiguo He, Joachim Jungherr, Fabrizio Perri, and Oren Sussmann for very helpful discussions. We acknowledge support from the Spanish Ministry of Economics and Competitiveness (grant ECO2011-23192) and the Generalitat de Catalunya-DIUE (grant 2009SGR1157). In addition, Ventura acknowledges support from the ERC (Advanced Grant FP7-249588), and Martin from the Spanish Ministry of Science and Innovation (grant Ramon y Cajal RYC-2009-04624) and the IMF Research Fellowship. The views expressed herein are those of the authors and do not necessarily reflect the views of the National Bureau of Economic Research.

NBER working papers are circulated for discussion and comment purposes. They have not been peer-reviewed or been subject to the review by the NBER Board of Directors that accompanies official NBER publications.

© 2014 by Alberto Martin and Jaume Ventura. All rights reserved. Short sections of text, not to exceed two paragraphs, may be quoted without explicit permission provided that full credit, including © notice, is given to the source.

Managing Credit Bubbles
Alberto Martin and Jaume Ventura
NBER Working Paper No. 19960
March 2014
JEL No. E32,E44,O40

ABSTRACT

We study a dynamic economy where credit is limited by insufficient collateral and, as a result, investment and output are too low. In this environment, changes in investor sentiment or market expectations can give rise to credit bubbles, that is, expansions in credit that are backed not by expectations of future profits (i.e. fundamental collateral), but instead by expectations of future credit (i.e. bubbly collateral). During a credit bubble, there is more credit available for entrepreneurs: this is the crowding-in effect. But entrepreneurs must also use some of this credit to cancel past credit: this is the crowding-out effect. There is an "optimal" bubble size that trades off these two effects and maximizes long-run output and consumption.

The "equilibrium" bubble size depends on investor sentiment, however, and it typically does not coincide with the "optimal" bubble size. This provides a new rationale for macroprudential policy. A lender of last resort can replicate the "optimal" bubble by taxing credit when the "equilibrium" bubble is too high, and subsidizing credit when the "equilibrium" bubble is too low. This leaning-against-the-wind policy maximizes output and consumption. Moreover, the same conditions that make this policy desirable guarantee that a lender of last resort has the resources to implement it.

Alberto Martin
CREI
Universitat Pompeu Fabra
Ramon Trias Fargas, 25-27
08005 Barcelona
Spain
and Barcelona GSE
amartin@crei.cat

Jaume Ventura
CREI
Universitat Pompeu Fabra
Ramon Trias Fargas, 25-27
08005-Barcelona
SPAIN
and Barcelona GSE
and also NBER
jventura@crei.cat

Credit markets play an increasingly central role in modern economies. Within the OECD, for instance, domestic credit has risen from 100% of GDP in 1970 to approximately 160% of GDP in 2012 (Figure 1). This growth masks large variations across countries and over time (Figure 2). And yet, there is a common feature to all these different country experiences that stands out: credit has often alternated periods of rapid growth or “booms”, with periods of stagnation or significant decline or “busts”. Moreover, there is some evidence that these credit booms and busts have become more common in recent years.¹

Consider the case of the United States, where credit has grown more or less continuously throughout the sample period. Even there, it grew by approximately 40 percent of GDP between 1990 and 2010, only to contract sharply afterwards. In Greece, Ireland, Spain and Portugal, the dynamics of credit look similar during the last decades: stagnant or declining credit between the mid 1980s and the mid 1990s, a spectacular surge in credit between the mid-1990s and 2010, and stagnation or a sharp decline since then. Looking ahead, these drops in credit need not be short-lived as the Japanese and Swedish experiences show. In Japan, for instance, credit grew rapidly in the late 1990s and has fallen steadily since its 1999 peak. In Sweden, credit collapsed during the financial crisis of the early 1990s and it took over a decade to return to its previous peak.

These credit booms and busts tend to be accompanied by changes in key economic variables. It has been well documented that credit booms are associated with high asset prices and high growth rates of real GDP, consumption and investment. According to some estimates the growth rate of investment doubles during booms.² In spite of this, credit booms are still viewed with concern by policymakers and academics. The reason is that they eventually end, and their aftermaths are often characterized by financial crises and low economic growth.³ This has prompted calls for policies that restrain credit during booms, in the hope that smaller booms will lead to smaller crises.

¹See Mendoza and Terrones (2012) and Dell’Ariccia et al. (2012) for a brief discussion on the formal definition and empirical identification of credit booms. Mendoza and Terrones (2012) analyze the evolution of private credit to the private sector in 61 countries between 1960 and 2010 and identify 70 credit booms: each of the countries plotted in Figure 2 contains at least one of these. Dell’Ariccia et al. (2012) analyze data on bank credit to the domestic private sector in 170 countries between 1960 and 2010. They identify 175 credit booms, which translates into a 14% probability of a country experiencing a credit boom in any given year. They also document that credit booms appear to have become more common over time, in the sense that the fraction of countries experiencing a credit boom in any given year has been increasing since the 1980s. Claessens et al. (2011) use a different approach and study “credit cycles”, but they also find them to be common: in a sample of 21 advanced economies between 1960 and 2007, they are able to identify 114 such cycles.

²See Mendoza and Terrones (2012) and Dell’Ariccia et al. (2012).

³Dell’Ariccia et al. (2012) find that one third of credit booms end up in financial crises. Mendoza and Terrones (2012) find slightly lower numbers. The recent financial crisis in the United States also provides evidence in this regard: it was those regions that experienced the largest credit booms in the run up to the crisis that suffered the greater increase in credit delinquency during the crisis (Dell’Ariccia et al. 2008, Mian and Sufi 2009).

To evaluate the merit of these calls for policy, one must have a view of the forces driving these credit cycles. Credit may fluctuate for variety of reasons, and different types of fluctuations may call for different policy responses. At a very general level, fluctuations in credit may reflect changes in demand or in supply. And these, in turn, may reflect changes in a variety of factors like preferences, technology or expectations. In this paper, we follow the large body of recent macroeconomic research on the “financial accelerator” and focus on credit fluctuations that are driven by fluctuations in borrowing constraints. The narrative is simple. When a borrower obtains credit, she is exchanging goods today for a promise to deliver goods in the future. These promises are only valued by lenders if they have some guarantee of being repaid. One can think of this guarantee as the future income of borrowers that can be credibly pledged to lenders. We refer to this pledgeable income as the economy’s stock of collateral. If borrowers are constrained, it is this stock of collateral that determines the amount of promises that can be issued. If borrowers are constrained, understanding boom-bust episodes like the ones depicted above requires a theory of collateral fluctuations. This paper provides such a theory.

Our key innovation is to distinguish between fundamental and bubbly collateral. Fundamental collateral is the part of a borrower’s pledgeable income that corresponds to future output, i.e. it consists of a borrower’s rights to future production. Bubbly collateral is instead the part of a borrower’s pledgeable income that corresponds to bubbles or pyramid schemes, i.e. it consists of a borrower’s rights to future contributions in such schemes. The macroeconomic literature has exclusively focused on fundamental collateral, studying its implications for credit, investment and growth. This view of collateral is incomplete, though. Whenever fundamental collateral is insufficient (say, because of weak enforcement institutions), we show that there is room for investor optimism to sustain bubbles that expand the economy’s stock of collateral and total credit.

What are the macroeconomic effects of bubbly collateral? By definition, it enables borrowers to obtain credit in excess of their fundamental collateral: intuitively, current borrowers can obtain “excess” credit today because it is expected that there will be “excess” credit in the future as well. This is the crowding-in effect of bubbles, which *ceteris paribus* increases investment. But this future “excess” credit will divert some of the resources of future generations away from investment. This is the crowding-out effect of bubbles, which *ceteris paribus* reduces investment. The macroeconomic consequences of bubbles depend on the relative strength of these two effects. In particular, we find that the crowding-in effect dominates when bubbly collateral is low, and the crowding-out effect dominates when bubbly collateral is high. This gives rise to an “optimal” bubble which trades-off

these two effects and provides the amount of bubbly collateral that maximizes long-run output and consumption.

An essential feature of bubbly collateral is that its stock is driven by investor sentiment or market expectations. The credit obtained by borrowers today depends on market expectations about the credit that borrowers will obtain tomorrow, which in turn depend on tomorrow's market expectations about the credit that borrowers will obtain on the day after, and so on. Because of this, markets may sometimes provide too much bubbly collateral and sometimes too little of it, which creates a natural role for stabilization policies. We show that a lender of last resort with the authority to tax and subsidize credit can in fact replicate the optimal bubble allocation. To do so, it must adopt a policy of leaning-against-the-wind, taxing credit when bubbly collateral is excessive and subsidizing it when bubbly collateral is scarce. We explore the implications of this policy and show that it raises output and consumption, although it may sometimes increase macroeconomic volatility. Moreover, the same conditions that make bubbly collateral possible guarantee that a lender of last resort always has enough resources to implement the desired policy.

Sections 1, 2 and 3 contain the main results of the paper. Section 1 develops our basic model of collateral, credit and investment. Section 2 explores bubbly equilibria and studies the implications of bubbly collateral for dynamics and welfare. Section 3 introduces a lender of last resort and shows how credit-market interventions can be used to maximize output and consumption. Section 4 explores the issue of a fiscal backstop, i.e. of the resources required to sustain the desired policy. Section 5 extends the model by introducing roles for financial intermediaries and various types of credit contracts. Section 6 concludes. Before moving on, we offer a short review of related literature.

Literature review:

The model developed here builds upon previous work by Martin and Ventura (2011, 2012). In Martin and Ventura (2012), we analyzed the existence and macroeconomic effects of bubbles in an economy with extreme financial frictions that impede credit. In Martin and Ventura (2011), we extended the analysis to an economy with credit, and argued that bubbles could be a source of collateral. Relative to those papers, we now: (i) fully characterize the effects of bubbly collateral, identifying the conditions under which it is expansionary or contractionary; (ii) analyze the effects of macroprudential policies, and of the resources required to implement them, and; (iii) generalize the framework by introducing financial intermediaries and different types of credit contracts.

Our paper is obviously related to a large body of research that deals with fluctuations in credit,

both empirically and theoretically. The former has sought to identify empirical regularities of credit booms and busts: Gourinchas et al. (2001), Claessens et al. (2011), Mendoza and Terrones (2012), Dell’Ariccia et al. (2012) and Schularick and Taylor (2012) fall within this category. On the theoretical front, various papers have tried to model “credit cycles” as an equilibrium outcome of competition in financial markets. Some examples of this work are Ruckes (2004), Dell’Ariccia and Marquez (2006), Matsuyama (2007), Gorton and He (2008) and Martin (2008). Like us, these papers model fluctuations in credit. Unlike us, though, these papers emphasize the role of institutional features of financial markets – like regulation or the incentives of certain market participants – in generating and magnifying fluctuations in credit. We take instead a macroeconomic perspective and argue that, when fundamental collateral is scarce, investor sentiment may give rise to credit bubbles.

From a methodological perspective, thus, this paper is closest to the literature that has studied the effects of bubbles in the presence of financial frictions: (i) unlike us, Caballero and Krishnamurthy (2006), Farhi and Tirole (2011) and Miao and Wang (2011) focus on the role of bubbles as a useful source of liquidity; (ii) like us, Kocherlakota (2009) focuses on the role of bubbles as collateral or net worth; and (iii) unlike us, Ventura (2011) focuses on the effects of bubbles on the cost of capital. There is also a long tradition of papers that view fiat money as a bubble, like Samuelson (1958) and Kiyotaki and Moore (2008). Our model is also related to the vast work on macroeconomic models with financial frictions, going back to Bernanke and Gertler (1989) and Kiyotaki and Moore (1997), in which collateral plays an key role in determining the level of financial intermediation and economic activity. Our contribution relative to this work is that we distinguish between fundamental and bubbly collateral.

Our study of policy is related to the literature on bailouts. Bailouts are commonly rationalized as a way to stimulate economic activity in the event of a crisis, by transferring resources towards distressed agents. In a macroeconomic model with financial frictions, for instance, Gertler and Kiyotaki (2012) show how policies that provide credit to distressed agents can reduce the severity of a crisis. At the same time, the prevailing view is that bailouts generate costs *ex ante* by distorting incentives (e.g. Farhi and Tirole 2012). The credit subsidies that we study are not really bailouts because they are financed through taxes on borrowers themselves, i.e., they entail no net transfers to borrowers as a whole. They are akin to bailouts, though, because they are given to borrowers to repay their debts. The effects of these subsidies are different from those emphasized in the literature, however. They have positive effects on economic activity *ex ante* because, as in Ranciere

et al. (2008), the expectation of future bailouts raises collateral; but they are costly to execute ex post because they divert resources away from investment.

Finally, this paper is related to the recent work that stresses the role of information insensitive collateral such as Dang et al. (2011) and Gorton and Ordoñez (2012). This research emphasizes the role of the financial system in generating collateral that is accepted by everyone without fear of adverse selection, because it does not pay for any agent to produce private information regarding its underlying characteristics. Of course, these incentives may change during a crisis, in which case information is generated and the value of collateral might experience large swings. In our model, it is also natural to think of bubbly collateral as information insensitive relative to fundamental collateral. The value of bubbly collateral depends on investor sentiment or market expectations which are public information. The value of fundamental collateral depends instead on the regular business activity of the underlying firm or financial institution, which is likely to be influenced by managers through a variety of channels that are difficult to observe and give rise to private information.

1 The bubbly economy

The starting point of our analysis is the classic Diamond (1965) model of capital accumulation with overlapping generations. The young supply labor, consume part of their labor income and save the rest. These savings are used to purchase capital from the old and to produce new capital. The old own the capital, demand labor and consume their capital income.

Tirole (1985) extended the Diamond model by introducing an additional market for bubbles or pyramid schemes. Participants in a pyramid scheme make voluntary contributions that entitle them to receive the next contribution. Thus, we say that an individual purchases a bubble when he/she makes a contribution to a pyramid scheme. Similarly, we say that an individual sells a bubble when he/she receives a contribution from the pyramid scheme. Starting a bubble or pyramid scheme yields a windfall to the first participant, which consists of the first contribution to the scheme. We assume that each generation starts new bubbles with random initial value. These new bubbles are traded in the market for bubbles alongside the old bubbles started by previous generations.⁴

The model we present here adds a credit market to the Tirole model, as sketched in the last

⁴The arrival of new bubbles is an important departure from the original Tirole model that plays a key role in our theory.

section of Martin and Ventura (2012). In the Diamond and Tirole models there is only intergenerational trade. Here we create gains from intragenerational trade by introducing heterogeneity within generations. Workers/lenders supply labor, but they do not own capital and bubbles. Entrepreneurs/borrowers are the ones who own capital and bubbles. This creates a role for a credit market in which young workers/lenders give credit to young entrepreneurs/borrowers. In return, old entrepreneurs/borrowers pay a (possibly contingent) interest rate to old workers/lenders.

Our emphasis is precisely on the workings of this credit market. If this market worked well, the equilibria of our model would not differ from those of the Tirole model. The credit market would simply allow workers/lenders to effectively own capital and bubbles, since competition among entrepreneurs/borrowers would ensure that equilibrium credit contracts replicate the payoffs of owning capital and bubbles. But, like the “financial accelerator” literature, we recognize that imperfect enforcement institutions limit the collateral of entrepreneurs/borrowers and impair the workings of the credit market.⁵ By collateral, we mean the old-age resources that young entrepreneurs/borrowers can pledge to young workers/lenders. In this section, we describe our model and show how the set of equilibria depends on the availability of collateral.

Before moving on, it might be useful to write a few words about the nature of bubbles for those readers that remain skeptical about this modeling strategy. Even though the concept of bubble might seem quite abstract or exotic to some at first sight, it is easy to find real-world situations that correspond fairly well to this concept. Consider, for instance, credit given to a firm in excess of the net present value of the cash-flows that this firm will generate. Such excessive credit is rational if lenders expect the firm to obtain excessive credit also in the future. Thus, giving excessive credit is akin to purchasing a bubble, that is, it can be interpreted as a voluntary contribution to the firm that gives the right to the next voluntary contribution. This leads us to think of real-world firms as portfolios of capital and bubbles. And this is exactly what the entrepreneurs/borrowers in our model stand for. Naturally, the young workers/lenders in our model stand for those savers that rationally provide credit to them.

⁵Imperfect enforcement institutions do not impair the workings of the markets for labor, capital or bubbles since transactions in these markets do not involve a promise by the seller to deliver future payments to the buyer. Thus, labor, capital and bubbles can be traded even in situations in which credit is not possible or severely restricted.

1.1 The basic setup

Consider an economy inhabited by a sequence of equal-sized and overlapping generations of young and old. Time starts in period $t = 0$ and then goes on forever. The objective of individual i of generation t is to maximize his/her utility U_t^i , given by:

$$U_t^i = C_{t,t}^i + \beta \cdot E_t C_{t,t+1}^i \quad (1)$$

where $\beta > 0$; and $C_{t,t}^i$ and $C_{t,t+1}^i$ are the young-age and old-age consumptions of individual i generation t . Naturally, consumption must be non-negative, i.e. $C_{t,t}^i \geq 0$ and $C_{t,t+1}^i \geq 0$. As usual, $E_t \{\cdot\}$ denotes the mathematical expectation of the corresponding variable.

Each generation consists of two types of individuals. Individuals of the first type work during youth, save part of their labor income and lend it to finance old age consumption. We refer to individuals of this type as workers/lenders. Individuals of the second type borrow during youth to finance purchases of capital and bubbles, and they produce during old age. We refer to individuals of this type as entrepreneurs/borrowers.

Workers/lenders supply one unit of labor during youth and decide how much of their labor income to save. They use their savings to purchase credit contracts in exchange for a gross, possibly contingent, interest rate of R_{t+1} units of output in period $t + 1$ for each unit of output used to purchase credit contracts in period t . We refer to R_{t+1} as the contingent or ex post interest rate, and we refer to $E_t R_{t+1}$ as the interest rate. In old age, these individuals receive the return to their savings and consume. Thus, the consumptions of these individuals are given by:

$$C_{t,t}^i = W_t - L_t \quad (2)$$

$$C_{t,t+1}^i = R_{t+1} \cdot L_t \quad (3)$$

where W_t is the wage and L_t is savings or the value of credit contracts purchased. Equation (2) says that young-age consumption equals labor income minus savings, while Equation (3) says that old-age consumption equals the return to savings. Worker/lenders maximize utility in Equation (1) subject to the budget constraints in Equation (2) and (3).

Entrepreneurs/borrowers invest and produce. The production technology can be described by

the following Cobb-Douglas function:

$$F(K_t, N_t) = A_t \cdot K_t^\alpha \cdot (\gamma^t \cdot N_t)^{1-\alpha} \quad (4)$$

where K_t is capital, $\alpha \in (0, 1)$ and $\gamma > 1$. Labor productivity grows at the constant rate $\gamma \geq 1$. We refer to A_t as a productivity shock and assume that it fluctuates randomly over time. The production of one unit of capital requires one unit of the consumption good. We assume that capital fully depreciates in production.

Entrepreneurs/borrowers also initiate and trade bubbles. We use B_t to denote the value of the bubbles in period t . Some of these bubbles are old since they were initiated by previous generations of entrepreneurs/borrowers and were purchased by entrepreneurs/borrowers of generation $t - 1$. Some of these bubbles are new since they are initiated by entrepreneurs/borrowers of generation $t - 1$. Thus, the aggregate bubble evolves as follows:

$$B_{t+1} = R_{t+1}^B \cdot B_t + B_{t+1}^N \quad (5)$$

where R_{t+1}^B is the increase in price or return to the bubbles purchased from entrepreneurs/borrowers of generation $t - 1$; and B_{t+1}^N the value of the bubbles initiated by the entrepreneurs/borrowers of generation t . We refer to B_{t+1}^N as bubble creation and we assume that it is non-negative, i.e. $B_{t+1}^N \geq 0$.

To finance their activities, entrepreneurs/borrowers sell credit contracts to workers/lenders. These contracts must be collateralized, that is, they must be backed by credible promises of future payments. This brings us to the key friction that underlies all the analysis of this paper: imperfect enforcement institutions limit the amount of available collateral. In particular, entrepreneurs/borrowers can hide a fraction $1 - \phi$ of their capital income from enforcement institutions, so that:

$$R_{t+1} \cdot L_t \leq \phi \cdot [F(K_{t+1}, N_{t+1}) - W_{t+1} \cdot N_{t+1}] + B_{t+1}. \quad (6)$$

Equation (6) states that promised payments cannot exceed a fraction $\phi \in [0, 1]$ of their capital income plus their bubbles. We think of the first term as the “fundamental” collateral of entrepreneurs/borrowers, and of the second term as their “bubbly” collateral.⁶ Throughout the paper, we

⁶One way to think about this constraint is that courts can grab all the consumption goods that are traded in the market but only a fraction ϕ of those that are not traded.

refer to Equation (6) as the credit or collateral constraint. As $\phi \rightarrow 1$, the entire capital income can be used as collateral for credit and the credit constraint coincides with the restriction that old-age consumption be non-negative, i.e. $C_{t,t+1}^i \geq 0$. We refer to this limiting case as the frictionless economy.

With these assumptions, we can write the consumptions of entrepreneurs/borrowers as follows:

$$C_{t,t}^i = L_t - K_{t+1} - B_t \quad (7)$$

$$C_{t,t+1}^i = F(K_{t+1}, N_{t+1}) - W_{t+1} \cdot N_{t+1} + B_{t+1} - R_{t+1} \cdot L_t \quad (8)$$

Equation (7) says that young-age consumption equals credit minus investment and the purchases bubbles, while Equation (8) says that old-age consumption equals production net of labor costs plus the value of bubbles minus credit payments. Entrepreneurs/borrowers maximize utility in Equation (1) subject to the budget constraints in Equations (7), (8), the credit constraint in Equation (6) and the law of motion of bubbles in Equation (5).

1.2 Markets and prices

We are ready to solve the model. In the labor market, old entrepreneurs/borrowers (henceforth, borrowers) demand the labor supplied by young workers/lenders (henceforth, lenders) until the marginal product equals the wage. Since the latter supply one unit of labor, $N_t = 1$, this means that:

$$w_t = (1 - \alpha) \cdot A_t \cdot k_t^\alpha \quad (9)$$

As usual, we use lowercase letters to refer to variables in units of efficient workers so that, for instance, $k_t \equiv \gamma^{-t} \cdot K_t$. Equation (9) says that labor income is a constant fraction $1 - \alpha$ of production.

In the market for bubbles, old borrowers sell bubbles to young ones. Old borrowers supply all their bubbles provided the price is nonnegative. Young borrowers, as we have seen, finance the purchase bubbles by selling credit contracts. If the expected return to holding bubbles falls short of the interest rate, therefore, young borrowers make a loss when they sell credit contracts to finance bubble purchases and the demand for bubbles is zero. If the expected return to holding bubbles exceeds the interest rate, young borrowers make a profit when they borrow to purchase bubbles and the demand for bubbles is unbounded. Thus, equilibrium requires that the expected return to

holding bubbles equals the interest rate:

$$E_t R_{t+1}^B = E_t R_{t+1} \quad (10)$$

Finally, we move to the credit market where young lenders supply credit to young borrowers. Note first that $\alpha \cdot E_t A_{t+1} \cdot k_{t+1}^{\alpha-1} \geq E_t R_{t+1} \geq \beta^{-1}$ in equilibrium.⁷ Using this observation, the supply of credit by young lenders can be described as follows:

$$l_t \begin{cases} = w_t & \text{if } \beta \cdot E_t R_{t+1} > 1 \\ \in [0, w_t] & \text{if } \beta \cdot E_t R_{t+1} = 1 \end{cases} \quad (11)$$

If the interest rate exceeds the discount rate, young lenders save all their income. If the interest rate equals the discount rate, young lenders are indifferent between saving and consuming.

The demand for credit by young borrowers can be written as follows:

$$R_{t+1} = \begin{cases} \alpha \cdot A_{t+1} \cdot k_{t+1}^{\alpha-1} & \text{if } E_t b_{t+1}^N \geq (1 - \phi) \cdot \alpha \cdot E_t A_{t+1} \cdot k_{t+1}^{\alpha} \\ \frac{\phi \cdot \alpha \cdot A_{t+1} \cdot k_{t+1}^{\alpha} + b_{t+1}}{\gamma^{-1} \cdot l_t} & \text{if } E_t b_{t+1}^N < (1 - \phi) \cdot \alpha \cdot E_t A_{t+1} \cdot k_{t+1}^{\alpha} \end{cases} \quad (12)$$

Since there are no restrictions on the type of contracts that can be written, we have that, if the credit constraint is binding in one state, it is always binding. Thus, the contingent interest rate is either the marginal product of capital or the maximum that the constraint allows in all states. Whether the credit constraint is binding or not depends on whether expected bubble creation exceeds the capital income that is not pledgeable. If it does, then the credit constraint is not binding. If it does not, the credit constraint is binding.

To complete the solution, we need to determine how borrowers use the credit they receive, and this is as follows:

$$\gamma \cdot k_{t+1} + b_t \begin{cases} = l_t & \text{if } \beta \cdot \alpha \cdot E_t A_{t+1} \cdot k_{t+1}^{\alpha-1} > 1 \\ \in [0, l_t] & \text{if } \beta \cdot \alpha \cdot E_t A_{t+1} \cdot k_{t+1}^{\alpha-1} = 1 \end{cases} \quad (13)$$

Equation (13) says that borrowers consume in the first period only if the marginal product of capital equals β^{-1} . Otherwise, borrowers use all the credit they receive to invest and purchase bubbles.

⁷This can be shown by contradiction. Assume first that $E_t R_{t+1} > \alpha \cdot E_t A_{t+1} \cdot k_{t+1}^{\alpha-1}$. Then, entrepreneurs would not want to sell credit contracts and $\alpha \cdot E_t A_{t+1} \cdot k_{t+1}^{\alpha-1} = \infty > \beta^{-1}$; while savers would like to spend all their income purchasing credit contracts. Thus, it follows that $\alpha \cdot E_t A_{t+1} \cdot k_{t+1}^{\alpha-1} \geq E_t R_{t+1}$. Assume next that $\beta^{-1} > E_t R_{t+1}$. Then, savers would not want to purchase credit contracts and $\alpha \cdot E_t A_{t+1} \cdot k_{t+1}^{\alpha-1} = \infty > \beta^{-1}$; while entrepreneurs would want to sell as many credit contracts as allowed by their constraint. Thus, it follows that $E_t R_{t+1} \geq \beta^{-1}$.

1.3 Equilibrium dynamics

To obtain some intuitions about the workings of the model, it is useful to collapse the previous equations as follows:

$$k_{t+1} \begin{cases} = \frac{1-\alpha}{\gamma} \cdot A_t \cdot k_t^\alpha - \frac{b_t}{\gamma} & \text{if } \beta \cdot E_t R_{t+1} > 1 \\ \in \left[0, \frac{1-\alpha}{\gamma} \cdot A_t \cdot k_t^\alpha - \frac{b_t}{\gamma} \right] & \text{if } \beta \cdot E_t R_{t+1} = 1 \end{cases} \quad (14)$$

$$E_t R_{t+1} = \min \{ \alpha \cdot E_t A_{t+1}, E_t \{ (\phi \cdot \alpha + n_{t+1}) \cdot A_{t+1} \} \} \cdot k_{t+1}^{\alpha-1} \quad (15)$$

$$b_{t+1} = \frac{E_t R_{t+1} + u_{t+1}}{\gamma} \cdot b_t + n_{t+1} \cdot A_{t+1} \cdot k_{t+1}^\alpha \quad (16)$$

where u_{t+1} is the unexpected component of bubble returns and n_{t+1} is the value of new bubbles as a share of output, i.e. $u_{t+1} \equiv R_{t+1}^B - E_t R_{t+1}^B$ and $n_{t+1} \equiv \frac{b_{t+1}^N}{A_{t+1} \cdot k_{t+1}^\alpha}$. We refer to u_t and n_t as bubble-return and bubble-creation shocks, respectively. Equations (14) and (15) describe the supply and demand of funds for investment, respectively. Equation (16) describes the dynamics of the bubble. Jointly, Equations (14)-(16) provide a full description of the dynamics of the state variables, i.e. k_t and b_t ; for any admissible sequence of productivity and bubble shocks, i.e. A_t , u_t and n_t . Thus, we refer to them as the law of motion of the system.

Figure 3 shows how the interest rate and next period's capital stock are determined by solving Equations (14) and (15). If the capital stock is low, the interest rate is above the discount rate and young lenders use all their income to purchase credit contracts. In this case, collateral is abundant and the capital stock is determined by the supply of funds. We label this range of capital stocks the region of *full intermediation*. If the capital stock is high, the interest rate equals the discount rate and young lenders consume part of their income. In this case, collateral is scarce and the capital stock is determined by the demand for funds. We label this range of capital stocks the region of *partial intermediation*.

Figure 4 shows how productivity and bubbles affect the supply and demand of funds for investment and, thus, the law of motion. High *realized* productivity raises the supply of funds, while high *expected* productivity raises collateral and the demand for funds. Bubble return shocks are embedded in the size of the bubble. The higher is the size of the bubble the lower is the supply of funds. High *realized* bubble creation raises the size of the bubble and lowers the supply of funds, but high *expected* bubble creation raises collateral and the demand for funds. These intuitions are crucial to understand the results that follow.

To construct equilibria for this economy, we propose first a joint stochastic process for bubble return and creation shocks: $\{u_t, n_t\}$ for all t . Naturally, this bubble process must be such that $E_t u_{t+1} = 0$, $b_t \geq 0$ and $n_t \geq 0$ for all t . We adopt the convention that $b_{-1} = 0$ and set n_0 to ensure that b_0 takes the desired starting value. With this stochastic process at hand, we search for a non-negative sequence for the state variables $\{k_t, b_t\}$ for all t that satisfies Equations (14)-(16). If such a sequence exists, we say that the proposed bubble process is an equilibrium. If such a sequence does not exist, we say that the proposed bubble process is not an equilibrium.

The bubbleless equilibrium is that one in which the bubble process takes this form: $\{u_t, n_t\} = \{0, 0\}$ for all t . The bubbleless equilibrium always exists and it is a useful reference. But there are additional bubbly equilibria and these we find more interesting.

2 Bubbly equilibria

Borrowers wish to purchase bubbles if these grow at least as fast as the interest rate. Borrowers can raise enough funds to purchase bubbles if these do not grow faster than the economy. Thus, bubbly equilibria are possible if and only if the interest rate does not exceed the growth rate.

It is well known that this situation arises if the frictionless economy is dynamically inefficient. In this case, the interest rate is low because the supply of funds is high and the economy overinvests. Bubbles reduce unproductive investment and this allows the economy to sustain a higher level of consumption and welfare. We do not want to focus on this case however.⁸

It is somewhat less known that, even if the frictionless economy is dynamically efficient, the interest rate might fall below the growth rate if financial frictions limit the stock of fundamental collateral. In this case, the interest rate is low because the demand for funds is low and, if anything, there might be underinvestment. This is indeed the case we focus on here.

Throughout, we assume that $\beta \cdot \gamma > 1$. This condition ensures that individuals are patient enough to save even if the interest rate is below the growth rate. Without this condition, the interest rate would never fall short of the growth rate and bubbly equilibria would not be possible in our model.

⁸One reason is that dynamic inefficiency is believed to be rare in practice (see Abel et al. 1988), although this has been recently challenged by Geerolf (2012). Another reason is that, in this case bubbly equilibria are associated with declines in investment and output, which seems counterfactual.

2.1 Bubbly business cycles

It seems natural to start with the case in which there are no productivity shocks, i.e. $A_t = A$. We also adopt the following assumption:

$$\frac{1}{2} < \alpha < \frac{1}{1 + \phi} \quad (17)$$

The first inequality ensures that the frictionless economy is dynamically efficient and investment is always productive. Thus, bubbly equilibria exist only if the demand for funds is depressed. The second inequality ensures that this is indeed the case. That is, collateral is scarce and this lowers the demand for funds enough to make bubbly equilibria possible.

The existence of bubbly equilibria of this sort does not imply that there is underinvestment in the bubbleless equilibrium. If

$$\frac{1}{1 + \beta \cdot \phi} < \alpha < \frac{1}{1 + \phi},$$

the steady state of the bubbleless equilibrium lies in the region of full intermediation. The interest rate is low enough to make bubbly equilibria possible, but not low enough to lead to underinvestment. If

$$\frac{1}{2} < \alpha < \frac{1}{1 + \beta \cdot \phi},$$

the steady state of the bubbleless equilibrium lies in the region of partial intermediation. In this case, the interest rate is low enough not only to make bubbly equilibria possible, but also to lead to underinvestment.

Let us consider first a ‘quiet’ bubble process: $\{u_t, n_t\} = \{0, n\}$ for all t . This deterministic bubble is an equilibrium if n is low enough. From any initial condition, the economy converges to the following steady state:

$$k^* = \min \left\{ \frac{1 - \alpha}{\gamma} \cdot A \cdot (k^*)^\alpha - \frac{b^*}{\gamma}, [\beta \cdot (\phi \cdot \alpha + n) \cdot A]^{1-\alpha} \right\} \quad (18)$$

$$b^* = \frac{\gamma \cdot n \cdot A \cdot (k^*)^\alpha}{\gamma - (\phi \cdot \alpha + n) \cdot A \cdot (k^*)^{\alpha-1}} \quad (19)$$

Equation (18) and (19) jointly determine the steady state values for the capital stock and bubble. One can think of n as an index of the size of the bubble. A higher value of n leads to a higher steady state bubble, for at least two reasons. The first and direct one is that a higher value of n raises the value of new bubbles that are created in each period. The second and more indirect reason is that a higher value of n raises the interest rate, thereby raising the rate at which the value

of old bubbles grows.

Figure 5 shows the effects of n on the steady state values of capital, the bubble, credit, the interest rate and utility. By utility we mean the sum of utilities of lenders and borrowers, i.e. $U_t = \sum_i U_t^i$. The left panels of the figure show the case in which the steady state of the bubbleless equilibrium is located in the region of full intermediation. The effects of the size of the bubble on the capital stock and utility are negative over all the range of possible values of n . The reason is that investment is not distorted in the bubbleless equilibrium. Since the supply of funds is vertical, bubbles raise the interest rate and displace productive investment. This crowding-out effect of bubbles lowers the capital stock and welfare.

The right panels of Figure 5 show instead a case in which the steady state of the bubbleless equilibrium is located in the region of partial intermediation. The effects of the size of the bubble on the capital stock and utility have an inverse U-shape. The reason is that there is underinvestment in the bubbleless equilibrium. Since the supply of funds is initially flat, small bubbles do not affect the interest rate but they provide additional collateral that raises credit and investment. This crowding-in effect of bubbles raises the capital stock and welfare.

But if the bubbles are too large, the economy enters the region of full intermediation and the effects of bubbles change. Since the supply of funds becomes vertical, large bubbles raise the interest rate and displace productive investment. The crowding-out effect returns. The larger the bubble the larger is this crowding out effect. Indeed, if the bubble is large enough, utility is lower than if there is underinvestment.

There is therefore an ‘optimal’ bubble that provides the amount of collateral that maximizes the capital stock and utility in the steady state. This bubble is the one that places the economy at the frontier of the partial and full intermediation regions, eliminating underinvestment without raising the interest rate. A smaller bubble would provide too little collateral and the funds available for investment would be too low. A larger bubble would raise the interest rate and the funds available for investment would also be too low.

The ‘quiet’ bubble provides the basic intuition for what is to come later. But, to the extent that fluctuations in credit are driven by bubbles, these bubbles are everything but quiet. Thus, we consider next an economy that experiences ‘bubbly episodes’. In particular, we assume that the economy starts in the fundamental state where $b_t = n_t = 0$. The economy can transition to one of many bubbly states which we index by $j = 1, \dots, J$. Let ε_j be the probability of reaching bubbly state j from the fundamental state. When the economy abandons a bubbly state, it returns to the

fundamental state. Let δ_j be the probability that the economy reaches the fundamental state from bubbly state j . We refer to the interval that goes from the first period the economy reaches bubbly state j to the first period in which it returns to the fundamental state as a ‘bubbly episode of type j ’. Let z_t be the state of the economy, i.e. $z_t \in \{F, B_1, \dots, B_J\}$. During a bubbly episode of type j , we have that

$$n_t = n_j \quad \text{and} \quad u_{t+1} = \begin{cases} [\phi \cdot \alpha + (1 - \delta_j) \cdot n_j] \cdot A \cdot k_{t+1}^{\alpha-1} \cdot \frac{\delta_j}{1 - \delta_j} & \text{if } z_{t+1} = B_j \\ -[\phi \cdot \alpha + (1 - \delta_j) \cdot n_j] \cdot A \cdot k_{t+1}^{\alpha-1} & \text{if } z_{t+1} = F \end{cases} \quad (20)$$

The assumption that bubble creation is constant is just for convenience. The assumption about bubble returns says that, during a bubbly episode, the expected return to holding the bubble equals that of credit contracts. Conditional on the bubbly episode not ending, the return on the bubble will exceed that of credit contracts. But this is only compensation for the risk of the bubbly episode ending and the bubble bursting.⁹

With these assumptions, the dynamics of the economy can be written as follows:

$$k_{t+1} \begin{cases} \min \left\{ \frac{1 - \alpha}{\gamma} \cdot A \cdot k_t^\alpha, [\beta \cdot (\phi \cdot \alpha + \varepsilon \cdot n) \cdot A]^{1-\alpha} \right\} & \text{if } z_t = F \\ \min \left\{ \frac{1 - \alpha}{\gamma} \cdot A \cdot k_t^\alpha - \frac{b_t}{\gamma}, [\beta \cdot (\phi \cdot \alpha + (1 - \delta_j) \cdot n_j) \cdot A]^{1-\alpha} \right\} & \text{if } z_t = B_j \end{cases} \quad (21)$$

$$b_t = \begin{cases} 0 & \text{if } z_t = F \\ \frac{(\phi \cdot \alpha + (1 - \delta_j) \cdot n_j) \cdot A \cdot k_t^{\alpha-1}}{\gamma \cdot (1 - \delta_j)} \cdot b_{t-1} + n_j \cdot A \cdot k_t^\alpha & \text{if } z_t = B_j \end{cases} \quad (22)$$

where $\varepsilon \cdot n = \sum_j \varepsilon_j \cdot n_j$. Equation (21) describes the behavior of the capital stock. Its evolution in each period depends on whether investment is determined by the supply or demand for funds. It is worth mentioning that the probability of a bubbly episode starting raises the demand for funds in the fundamental state. Thus, the behavior of the economy in the fundamental state is not equivalent to that of the bubbleless equilibrium.¹⁰ Equation (22) describes the evolution of the bubble during an episode of type j . Note that the growth of the bubble depends on how large and

⁹Naturally, the economy with the ‘quiet’ bubble analyzed in Figure 3 is the limiting case of the economy with ‘bubbly episodes’ in which there is a bubbly state with $\varepsilon_j \rightarrow 1$, $\delta_j \rightarrow 0$ and $n_j = n$. The economy enters this state at the beginning of time with probability one and never leaves it.

¹⁰We have assumed that the probability and type of bubbly episodes are constant over time and therefore expected bubble creation is constant when the economy is in the fundamental state, i.e. $\varepsilon \cdot n$. This assumption is not necessary. We could have assumed instead that there are fluctuations in expected bubble creation in the fundamental state. In this case, even in the fundamental state the economy would be subject to changes in investor sentiment.

risky it is, i.e. n_j and δ_j . The larger and riskier, the faster it grows.

To understand the behavior of this economy, we show next some simulations. To produce them, we follow three steps. First, we choose parameter values that ensure that the steady state of the bubbleless equilibrium is located in the region of partial intermediation, i.e. $\alpha < \frac{1}{1 + \beta \cdot \phi}$. Second, we create four bubbly states that differ in terms of the size of the bubble and its risk:

Size\Risk	safe	risky
small	(n_S, δ_S)	(n_S, δ_R)
large	(n_L, δ_S)	(n_L, δ_R)

where $n_S < n_L$ and $\delta_S < \delta_R$. We also assume that all these bubbles are equally likely, i.e. $\varepsilon_j = \varepsilon$. Third, we generate a sequence of 10,000 values for z_t , and start the economy in the steady state so that we record 10,000 periods of steady state behavior.

Figure 6 plots the simulated time series of k_t , $E_t R_{t+1}$, l_t , U_t and b_t during a window of 200 periods. The Figure also shows the mean and standard deviation of these variables computed with the entire series of 10,000 periods. Given the length of the simulation, these sample statistics are excellent approximations to their corresponding theoretical counterparts.

Figure 6 illustrates that, depending on their characteristics, some bubbles crowd-in capital while others crowd-out capital. Take the first bubble in the sample: in this case, the bubble is small (i.e., $n = n_L$) and safe (i.e., $\delta = \delta_S$) and it raises the economy's capital stock. The interest rate remains constant at β^{-1} throughout the episode, which confirms that there is not enough bubbly collateral to fully intermediate wages. Contrast these effects with those of the next two bubbles, which are large (i.e., they both have $n = n_L$). Initially, both bubbles raise the economy's capital stock: after a while, though, they both become too large and reduce capital accumulation. The interest rises above β^{-1} during both episodes, confirming that there is too much bubbly collateral. The figure also illustrates that riskier bubbles grow faster because they must compensate potential buyers for their risk of bursting. To see this, compare the two episodes around periods 8030 and 8040. Both bubbles are of the same size but the first is riskier: thus, even though the first episode lasts less than the second one, the maximum size of the bubble is larger. One implication of this is that, conditional on not bursting, riskier bubbles become larger and have more severe crowding-out effects.

These examples illustrate two key aspects of credit bubbles. The first one is that they have

mixed effects on the economy. Bubble creation provides collateral to the current generation and this allows it to raise credit and expand investment. But bubble creation also requires future generations to cancel this additional credit and this diverts some of their resources away from investment. In this regard, we can think of the crowding-out effect of bubbles as an “overhang” effect, in the sense that growth is hurt by bubbles that were created in the past. The second point is that credit bubbles can follow very different paths, potentially much more complicated than the ones explored here, and they may have very different effects on output and welfare. This naturally suggests a role for policy in selecting or replicating a desirable equilibrium. Before going there, though, we need to deal with another layer of complexity: real-world economies are not only subject to bubble shocks but also to fundamental ones.

2.2 Bubbly and real business cycles

Let us bring back productivity shocks. In particular, assume that A_t can take two positive values: $A_t \in \{A_L, A_H\}$ with $A_L \leq A_H$. The transition probability is $\eta \leq 0.5$, i.e. $Prob(A_{t+1} \neq A_t) = \eta$. We define $EA_L \equiv E_t \{A_{t+1}/A_t = A_L\}$ and $EA_H \equiv E_t \{A_{t+1}/A_t = A_H\}$, and note that $A_L \leq EA_L \leq EA_H < A_H$. Then, we adopt the following assumption:

$$\frac{A_H}{A_H + EA_H} < \alpha < \frac{A_L}{A_L + \phi \cdot EA_L} \quad (23)$$

This assumption converges to that in Equation (17) as productivity shocks become small. The first inequality ensures that the frictionless economy is dynamically efficient and, as a result, investment is always productive. The second inequality ensures that financial frictions are strong enough to make bubbly equilibria possible.

Consider first the bubbleless equilibrium with productivity shocks. The economy goes through periods of high and low productivity. Periods of high productivity are characterized a large supply of funds and by a high expected productivity, which raises the demand for funds. The former lowers the interest rate while the later increases it (see Figure 4). The relative strength of these effects depends on the persistence of productivity as measured by η , and the importance of diminishing returns to investment as measured by α . If $\eta > 0.5 \cdot \alpha$, the effect of productivity on the supply of funds dominates. In this case, when productivity is high the interest rate is low and the gap between the actual and the optimal levels of investment is high. If instead $\eta < 0.5 \cdot \alpha$, the effect of productivity on the demand for funds dominates and the opposite is true.

To illustrate how productivity affects the optimal bubble, we extend the economy with ‘bubbly episodes’ to introduce productivity shocks. To simplify, we assume that transition probabilities for productivity and bubble shocks are independent. With these assumptions, we have that the dynamics of the economy are now given by:

$$k_{t+1} = \begin{cases} \min \left\{ \frac{1-\alpha}{\gamma} \cdot A_t \cdot k_t^\alpha, [\beta \cdot (\phi \cdot \alpha + \varepsilon \cdot n) \cdot E_t A_{t+1}]^{\frac{1}{1-\alpha}} \right\} & \text{if } z_t = F \\ \min \left\{ \frac{1-\alpha}{\gamma} \cdot A_t \cdot k_t^\alpha - \frac{b_t}{\gamma}, [\beta \cdot (\phi \cdot \alpha + (1-\delta_j) \cdot n_j) \cdot E_t A_{t+1}]^{\frac{1}{1-\alpha}} \right\} & \text{if } z_t = B_j \end{cases} \quad (24)$$

$$b_t = \begin{cases} 0 & \text{if } z_t = F \\ \frac{(\phi \cdot \alpha + (1-\delta_j) \cdot n_j) \cdot E_{t-1} A_t \cdot k_t^{\alpha-1}}{\gamma \cdot (1-\delta_j)} \cdot b_{t-1} + n_j \cdot A_t \cdot k_t^\alpha & \text{if } z_t = B_j \end{cases} \quad (25)$$

Equations (24) and (25) are simple generalizations of Equations (21) and (22) to allow for productivity fluctuations.

Figure 7 shows simulations for this economy. As before, the simulations start in the steady state and run for 10,000 periods. To produce them, we use the same methodology as in the previous section, except that we now have a process for productivity. In choosing the parameters for this process, we have assumed that $\eta > 0.5 \cdot \alpha$. As mentioned, this parameter condition implies that the bubble that fully intermediates wages grows with productivity.

This is why in Figure 7 bubbles raise the capital stock when productivity is high but reduce it when productivity is low. This is best exemplified by the long episode that starts after period 6960 and lasts until after period 7000, in which the bubble is large (i.e., $n = n_L$) and safe (i.e., $\delta = \delta_S$). The capital stock increases during the episode but it fluctuates with productivity. When productivity is high, the capital stock grows because wages are high and the large bubble channels part of these wages to investment. When productivity falls, however, the capital stocks contracts for two reasons: not only are wages lower, but the large bubble diverts part of them away from investment. The evolution of the interest rate confirms this narrative since, by rising above β^{-1} whenever productivity is low, it indicates that there is “too much” bubbly collateral and investment is being crowded out. In this example, the equilibrium bubble is too small when productivity is high but it is too large when productivity is small: an ‘optimal’ bubble would thus be procyclical, amplifying the response of output to productivity shocks.¹¹

¹¹More generally, the cyclicity of the bubble that attains full intermediation depends on the shock that is considered. We have also explored, for instance, a specification of the model with financial shocks, i.e. with random fluctuations in ϕ . These shocks affect the demand for funds but not their supply and, as a result, collateral is pro-

The general insight of this example is that the relative strength of crowding-in and crowding-out effects changes with the strength of fundamentals. The same amount of bubble creation today, for instance, may have small or large crowding-out effects in the future depending on the evolution of productivity. If future productivity is high and the economy is in the region of partial intermediation, the crowding-out effect of current bubble creation will be small. If instead future productivity is low and the economy is in the region of full intermediation, the crowding-out effect of current bubble creation will be high. In the terminology of the previous section, bubbly episodes may have large “overhang” effects should the economy suffer from a fall in productivity.

Taken together, the examples of the last two sections show that bubbles may expand the economy by providing collateral, but they may also lower investment and output if they grow too large. Can public policy be used to provide the economy with the desired amount of bubbly collateral? We show next that the answer to this question is affirmative.

3 A lender of last resort

We introduce next an agency that manages bubbly collateral through credit-market interventions. Subsidizing old borrowers, this agency expands their collateral. Taxing old borrowers, this agency reduces their collateral. The fiscal implications of these interventions are borne by young borrowers. Although these interventions do not directly affect the equilibrium value of the bubble, they enable the agency to “select” an equilibrium allocation.

We refer to this agency as a lender of last resort (LORL), since it guarantees the collateral of borrowers at the targeted level. If ex-post the bubble turns out to be too small given the target, the LORL provides additional resources to them. If ex-post the bubble turns out to be too large given the target, the LORL takes away resources from them.

3.1 The model with a lender of last resort

We introduce a LORL that intervenes in credit markets. In particular, it promises borrowers in period t a transfer of S_t units of the economy’s consumption good. The transfer S_t can be negative and contingent on the state of the economy. If the transfer is positive, its cost is financed by young borrowers. If the transfer is negative, its benefit is distributed to young borrowers. Letting X_t

cyclical. This means that, to intermediate wages fully, a bubble must be counter-cyclical with respect to ϕ , so that it reduces the response of output to financial shocks.

denote the agency's tax revenues, we require that the LOLR run a balanced budget

$$S_t = X_t. \quad (26)$$

Define S_{t+1}^N as the net resources that this policy provides to the borrowers of generation t in terms of goods in period $t + 1$:

$$S_{t+1}^N \equiv S_{t+1} - \frac{E_t R_{t+1}}{\gamma} \cdot X_t \quad (27)$$

That is, S_{t+1}^N is the difference between the subsidies that will be obtained in old age and the taxes paid in young age, both expressed in terms of goods in period $t + 1$. Insofar as expected subsidies can be pledged by borrowers to cancel credit contracts, this is a wealth transfer that affects collateral. If $S_{t+1}^N > 0$, the policy creates collateral in period t . If $S_{t+1}^N < 0$, the policy destroys collateral in period t . Thus, we refer to S_{t+1}^N as collateral creation by the LOLR. Using this notation and the budget constraint of the LOLR, we can express the dynamics of the policy as follows:

$$S_{t+1} = \frac{E_t R_{t+1}}{\gamma} \cdot S_t + S_{t+1}^N \quad (28)$$

The formal similarity between Equations (28) and (5) describing the dynamics of policy and the bubble hints at some of the results that follow.

The introduction of a LOLR does not affect the problem of lenders, but it does affect the problem of borrowers. Since borrowers can use subsidies to cancel credit contracts, the collateral constraint in Equation (6) now becomes

$$R_{t+1} \cdot L_t \leq \phi \cdot [F(K_{t+1}, N_{t+1}) - W_{t+1} \cdot N_{t+1}] + B_{t+1} + S_{t+1}, \quad (29)$$

while their consumptions are now given by

$$C_{t,t}^i = L_t - K_{t+1} - B_t - X_t \quad (30)$$

$$C_{t,t+1}^i = F(K_{t+1}, N_{t+1}) - W_{t+1} \cdot N_{t+1} + B_{t+1} + S_{t+1} - R_{t+1} \cdot L_t \quad (31)$$

The only differences between Equations (30)-(31) and Equations (7)-(8) are due to the transfers that are made by the LOLR. Borrowers maximize utility in Equation (1) subject to the budget constraints in Equations (30), (31), the credit constraint in Equation (29) and the laws of motion of bubbles and policy in Equations (5) and (28).

The introduction of a LOLR does not affect the equilibrium in the markets for labor or bubbles, which are still respectively described by Equations (9) and (10). It does affect the equilibrium in the credit market, though. While the supply of credit is still described by Equation (11), the demand of funds for investment by young borrowers can be written as follows:

$$R_{t+1} = \begin{cases} \alpha \cdot A_{t+1} \cdot k_{t+1}^{\alpha-1} & \text{if } E_t (b_{t+1}^N + s_{t+1}^N) \geq (1 - \phi) \cdot \alpha \cdot E_t A_{t+1} \cdot k_{t+1}^\alpha \\ \frac{\phi \cdot \alpha \cdot A_{t+1} \cdot k_{t+1}^\alpha + b_{t+1} + s_{t+1}}{k_{t+1} + \gamma^{-1} \cdot (b_t + s_t)} & \text{if } E_t (b_{t+1}^N + s_{t+1}^N) < (1 - \phi) \cdot \alpha \cdot E_t A_{t+1} \cdot k_{t+1}^\alpha \end{cases}, \quad (32)$$

As before, Equation (32) says that the credit constraint either binds in all or in none of the states. Thus, the contingent interest rate is either the marginal product of capital or the maximum that the constraint allows in all states. The only novelty is that the constraint is affected by the LOLR's policies: future subsidies s_{t+1} provide collateral to borrowers and they raise the demand for credit and thus investment, but current taxes s_t divert the resources of borrowers and they reduce the share of credit that can be used for investment.

To complete the solution, we need to determine how borrowers use the credit they receive, and this is as follows:

$$\gamma \cdot k_{t+1} + b_t + s_t \begin{cases} = l_t & \text{if } \beta \cdot \alpha \cdot E_t A_{t+1} \cdot k_{t+1}^{\alpha-1} > 1 \\ \in [0, l_t] & \text{if } \beta \cdot \alpha \cdot E_t A_{t+1} \cdot k_{t+1}^{\alpha-1} = 1 \end{cases} \quad (33)$$

Equation (33) says that borrowers consume in the first period only if the marginal product of capital equals β^{-1} . Otherwise, borrowers use all the credit they receive to invest, purchase bubbles, and pay taxes.

3.2 Equilibrium dynamics

We can now collapse the model with a LOLR into the following four equations:

$$k_{t+1} \begin{cases} = \frac{(1 - \alpha) \cdot A_t \cdot k_t^\alpha - b_t - s_t}{\gamma} & \text{if } \beta \cdot E_t R_{t+1} > 1 \\ \in \left[0, \frac{(1 - \alpha) \cdot A_t \cdot k_t^\alpha - b_t - s_t}{\gamma} \right] & \text{if } \beta \cdot E_t R_{t+1} = 1 \end{cases} \quad (34)$$

$$E_t R_{t+1} = \min \{ \alpha \cdot E_t A_{t+1}, E_t \{ (\phi \cdot \alpha + n_{t+1} + m_{t+1}) \cdot A_{t+1} \} \} \cdot k_{t+1}^{\alpha-1} \quad (35)$$

$$b_{t+1} = \frac{E_t R_{t+1} + u_{t+1}}{\gamma} \cdot b_t + n_{t+1} \cdot A_{t+1} \cdot k_{t+1}^\alpha \quad (36)$$

$$s_{t+1} = \frac{E_t R_{t+1}}{\gamma} \cdot s_t + m_{t+1} \cdot A_{t+1} \cdot k_{t+1}^\alpha \quad (37)$$

where m_{t+1} measures collateral creation by the LOLR as a share of output, i.e. $m_{t+1} \equiv \frac{s_{t+1}^N}{A_{t+1} \cdot k_{t+1}^\alpha}$. We shall think of m_t as the key policy instrument in the model, which is determined by the LOLR.

Equations (34) and (35) respectively describe the supply and demand of funds for investment with policy. Equation (36) and Equation (37) respectively describe the evolution bubbles and subsidies. Equations (34)-(37) provide a full description of the dynamics of the state variables, i.e. k_t , b_t and s_t ; for any admissible sequence of productivity and bubble shocks, i.e. A_t , u_t and n_t and for any sequence of policy interventions m_t . Thus, we refer to these four equations as the law of motion of the system with policy.

Equations (34)-(37) show how policy shocks affect the supply and demand of funds for investment and thus the law of motion. Like bubble shocks, past and present policy choices as captured by m_0, m_1, \dots, m_t are embedded in subsidies s_t . Through taxation, these policy choices reduce the present supply of funds available for investment as depicted in Equation (34). Simply put, young borrowers must devote part of their credit to paying for the subsidies promised to the previous generation. Future policy choices as captured by m_{t+1} instead raise the collateral of borrowers, as shown by Equation (35), enabling them to expand their demand for funds and their investment.

Once a LOLR is introduced into the model, an equilibrium cannot be defined without specifying policy. Throughout, we take policy as given and describe it by a stochastic process $\{m_t\}$. We adopt the convention that $s_{-1} = 0$ so that s_0 is determined by m_0 . We then propose a joint stochastic process for bubble return and bubble creation shocks: $\{u_t, n_t\}$, with $E_t u_{t+1} = 0$, $b_t \geq 0$ and $n_t \geq 0$ for all t . With this process at hand, we search for a sequence for the state variables (k_t, b_t, s_t) that satisfies $k_t \geq 0$ as well as Equations (34)-(37). If such a sequence exists, we say that the proposed stochastic process is an equilibrium. If such a sequence does not exist, we say that the proposed stochastic process is not an equilibrium.

3.3 Managing collateral during business cycles

What can a LOLR achieve by taxing and subsidizing credit? A first important result, which follows directly from comparing Equations (34)-(37) with Equations (14)-(16), is that a LOLR can use policy to replicate any of the equilibria of the original economy. Consider, for instance, that the economy is characterized by a process $\{u_t, n_t\}$ for the bubble return and creation shocks and

a corresponding bubble b_t . The LOLR can replicate the equilibrium allocation that would arise under an alternative process $\{\hat{u}_t, \hat{n}_t\}$, and the corresponding bubble \hat{b}_t , by choosing a policy $\{m_t\}$ that satisfies

$$m_t \cdot A_t \cdot k_t^\alpha = \frac{\hat{u}_t \cdot \hat{b}_{t-1} - u_t \cdot b_{t-1}}{\gamma} + (\hat{n}_t - n_t) \cdot A_t \cdot k_t^\alpha \quad (38)$$

for all $t > 0$. This policy guarantees that $s_t + b_t = \hat{b}_t$ and that $E_t \{(m_{t+1} + n_{t+1}) \cdot A_{t+1}\} = E_t \{\hat{n}_{t+1} \cdot A_{t+1}\}$ in all periods. Thus, the total crowding-out and crowding-in effects of the policy s_t together with bubble b_t are identical to those of bubble \hat{b}_t in the absence of policy.

This result is important because we have seen that markets may provide too little bubbly collateral, which is insufficient to intermediate all wages, or too much of it, which crowds out investment and reduces output and consumption. It therefore seems natural to consider policies that manage the economy's collateral. In particular, we consider policies $\{m_t\}$ that satisfy

$$E_t \{m_{t+1} \cdot A_{t+1}\} = \beta^{-1} \cdot k_{t+1}^{1-\alpha} - E_t \{(\phi \cdot \alpha + n_{t+1}) \cdot A_{t+1}\}, \quad (39)$$

$$k_{t+1} = \frac{(1 - \alpha) \cdot A_t \cdot k_t^\alpha - b_t - s_t}{\gamma} \quad (40)$$

in all periods t . Equation (39) guarantees that the proposed policy stabilizes $E_t R_{t+1}$ and sets it equal to β^{-1} at all times. Equation (40) says that this stabilization must be achieved while guaranteeing that wages are fully intermediated in equilibrium. Through this policy, the LOLR effectively “leans against the wind”, taxing credit when collateral is excessive and $E_t R_{t+1} > \beta^{-1}$ and subsidizing it when collateral is scarce and there is partial intermediation. Note that the policy depends only on observables, since it need only be contingent on aggregate productivity A_t and on the bubble shocks $\{u_t, n_t\}$.

We can illustrate the effects of such a policy by revisiting the example of a ‘quiet’ bubbly process, in which $A_t = A$ and $\{u_t, n_t\} = \{0, n\}$ for all t . We have already argued that there is an optimal level of bubble creation in this example, which maximizes output and welfare in the steady state. This bubble, which places the economy at the frontier of the partial and full intermediation regions, corresponds exactly to the one prescribed by our policy rule. Thus, if we use n^* to denote such an optimal level of bubble creation and follow Equation (38), a policy that sets $m = n^* - n$ in all periods attains the maximum levels of output and welfare.

Figure 8 depicts the steady state values of capital, credit, the interest rate, utility, the bubble and the subsidy s as a function of n , both with and without policy. The solid lines depict the

equilibrium values of these variables without policy. The figure is drawn for an economy with partial intermediation in which n has non-monotonic effects. The dashed lines reflect the steady-state values of these same variables under the proposed policy rule. In this case, all variables are independent of n . Once again, the reason is that the LOLR intervenes in the credit market to maximize intermediation while minimizing crowding out effects. In the region of partial intermediation it does so by subsidizing credit payments by old borrowers, i.e. by setting $s > 0$, whereas in the region of full intermediation it does so by taxing credit payments by old borrowers, i.e. by setting $s < 0$ until $E_t R_{t+1} = \beta^{-1}$.

These insights are easily extended to the economy with “bubbly episodes” that was analyzed in Section 2.1. This is the same economy as before, with the only difference that it transitions between fundamental and bubbly states according to a sunspot variable $z_t \in \{F, B\}$. Thus, the optimal bubble is also the same as before, and the corresponding allocation can be implemented by the LOLR by setting

$$m_t \cdot A_t \cdot k_t^\alpha = (n^* - n_t) \cdot A_t \cdot k_t^\alpha - \frac{u_t \cdot b_{t-1}}{\gamma},$$

in all periods. Figure 9 shows the effects of this policy on the main variables of the economy, and it also depicts the size and risk of the bubble that characterize each bubbly episode. Once again, the solid lines represent these variables in the absence of policy while the dashed lines represent their values under the policy rule. The LOLR’s intervention, which is now state contingent, raises the capital stock in all periods and fully stabilizes it. Whenever bubbly collateral is scarce and the economy is in the partial intermediation region, credit is subsidized until it equals total wages. Whenever collateral is abundant and the interest rate exceeds β^{-1} , credit is taxed until the $E_t R_{t+1} = \beta^{-1}$.

This example illustrates that the LOLR’s intervention only affects the market for bubbles through its effect on the interest rate. The economy still experiences bubbly episodes and the policy rule has no direct effect over them. Instead, the LOLR monitors these fluctuations and intervenes in the market for credit accordingly. When bubbles burst, the LOLR steps in and helps borrowers cancel their credit contracts. When bubbles become too large, as in the second and third episodes of the example, the LOLR steps in and taxes borrowers. By doing so, the LOLR reduces the demand for credit, eliminates the crowding out effect and boosts capital accumulation. Of course, not everyone is happy with this policy: generations with a lot of bubble creation lose

because part of their wealth is taxed away. Yet, as the table in Figure 9 confirms, average welfare increases as a result of the intervention.

Figures 8 and 9 depict the effect of our policy rule in economies with no fundamental uncertainty. In this case, the rule is optimal in the sense of maximizing average welfare and output in the steady state. The analysis becomes more complicated in economies with fundamental uncertainty, though. As we have discussed, a level of bubble creation that boosts growth when productivity is high might lead to large crowding-out effects when productivity falls. This complicates the characterization of an optimal bubble. Nonetheless, we apply next our same policy rule to this economy and show that it also raises the average levels of output and welfare in the steady state.

Figure 10 builds on the example of Section 2.3 and depicts the impact of the policy rule in an economy with both, productivity and bubble shocks. As before, the solid lines represent the values of the different variables in the absence of policy while the dashed lines represent their values under the policy rule. The figure shows that, once more, the policy rule stabilizes the interest rate and it also raises the average capital stock and welfare. The new insight is that the policy has an ambiguous effect on economic volatility. Fluctuations that are driven by bubble shocks are stabilized by the policy, while fluctuations that are driven by productivity shocks are amplified by it.

The reason for this last result is that, under our assumptions, the policy rule is procyclical relative to productivity shocks. When productivity is high, investment is constrained by the demand of funds. Wages are high in these periods and collateral is insufficient to intermediate them all. By following the policy, the LOLR increases expected subsidies, raises credit and exacerbates the boom. When productivity is low, however, investment is constrained by the supply of funds. In these times, there is not much that the policy can do to expand output besides taxing borrowing to reduce crowding-out effects. Hence, the policy rule increases the strength of productivity-driven booms relative to productivity-driven recessions. Its overall effect on economic volatility, however, depends on the relative variance of bubble vis-à-vis productivity shocks. In our particular example, as the table in Figure 10 shows, it increases the volatility of both the capital stock and of welfare.

The examples of this section show that the bubbly economy provides a new rationale for macroprudential policy. A leaning-against-the-wind policy that taxes/subsidizes credit when the “equilibrium” bubble is too high/low can replicate the “optimal” bubble and maximize output and consumption. A natural question is whether the LOLR can afford this policy.

4 The fiscal backstop

We have assumed so far that the LOLR can guarantee any amount of collateral provided that it does not exceed savings. In other words, we have assumed that the economy's entire savings serve as fiscal backstop. This is obviously an unrealistic assumption. What happens if the LOLR has limited taxation power? We show next that the same conditions that make a policy desirable also guarantee that a lender of last resort has enough resources to implement it.

4.1 The model with debt

We address this question by assuming that the LOLR has a taxation "capacity" τ , i.e. a maximum amount that it can tax per effective worker. Clearly, this capacity constraint does not bind for policies that satisfy $s_t < \tau$ in all periods. To sustain policies that require transfers $s_t > \tau$ in some periods, though, the LOLR needs to issue credit contracts. To distinguish these contracts from those issued by entrepreneurs/lenders we refer to them as public credit contracts or public debt. We then refer to credit contracts issued by entrepreneurs/lenders as private credit contracts. Public credit contracts pay a gross, possibly contingent, interest rate of R_{t+1}^G units of output in period $t+1$ for each unit of output used to purchase them in period t . We refer to R_{t+1}^G as the contingent or ex-post interest rate on public credit, and we refer to $E_t R_{t+1}^G$ as the interest rate on public credit. With this notation, we can write the budget constraint of the LOLR as follows:

$$S_t + R_t^G \cdot D_{t-1} = X_t + D_t. \quad (41)$$

where D_t is the value of public credit contracts issued in period t . Equation (41) says that total spending by the LOLR in transfers and debt payments cannot exceed total revenues from taxation and the sales of public credit contracts.

The main change relative to our previous analysis is that now we have an additional market for public credit contracts. In this market, the LOLR supplies debt inelastically. Lender maximization implies that, in equilibrium, the return to public credit contracts must equal the return to private lending:¹²

$$E_t R_{t+1}^G = E_t R_{t+1}. \quad (42)$$

¹²To see this note that the consumptions of lenders are now given by $C_{t,t}^S = W_t - L_t - D_t$ and $C_{t,t+1}^S = R_{t+1} \cdot L_t + R_{t+1}^G \cdot D_t$. Clearly, the demand for public credit contracts will be either zero or infinity if $R_{t+1} \neq R_{t+1}^G$.

This does not imply, however, that the ex-post interest rate on public and private credit contracts coincide.

Define D_{t+1}^N measures the net resources that the evolution of public credit provides to the borrowers of generation t in terms of goods in period $t + 1$:

$$D_{t+1}^N \equiv D_{t+1} - \frac{E_t R_{t+1}}{\gamma} \cdot D_t \quad (43)$$

That is, D_{t+1}^N is the difference between the public debt that generation t leaves in old age and the public debt that this generation receives in young age, both expressed in terms of goods in period t . It represents a wealth transfer to generation t and affects its collateral. If $D_{t+1}^N > 0$, the policy creates collateral in period t . If $D_{t+1}^N < 0$, the policy destroys collateral in period t . Thus, we refer to D_{t+1}^N as additional collateral creation by the LOLR. While S_{t+1}^N is the collateral creation that is determined by the evolution of subsidies, D_{t+1}^N is the collateral creation that is determined by the evolution of debt and ultimately of taxes. We can now express the dynamics of policy as follows:

$$S_{t+1} = \frac{E_t R_{t+1}}{\gamma} \cdot X_t + S_{t+1}^N \quad (44)$$

$$D_{t+1} = \frac{E_t R_{t+1}}{\gamma} \cdot D_t + D_{t+1}^N \quad (45)$$

Once again, the formal similarity between Equations (44)-(45) and (5) describing the dynamics of policy and the bubble hints at some of the results that follow.

4.2 Equilibrium dynamics

Following steps that are now familiar, we can rewrite the model with a LOLR as follows:

$$k_{t+1} \begin{cases} = \frac{(1 - \alpha) \cdot A_t \cdot k_t^\alpha - b_t - s_t - d_t}{\gamma} & \text{if } \beta \cdot E_t R_{t+1} > 1 \\ \in \left[0, \frac{(1 - \alpha) \cdot A_t \cdot k_t^\alpha - b_t - s_t - d_t}{\gamma} \right] & \text{if } \beta \cdot E_t R_{t+1} = 1 \end{cases} \quad (46)$$

$$E_t R_{t+1} = \min \{ \alpha \cdot E_t A_{t+1}, E_t \{ (\phi \cdot \alpha + n_{t+1} + m_{t+1}^S + m_{t+1}^G) \cdot A_{t+1} \} \} \cdot k_{t+1}^{\alpha-1} \quad (47)$$

$$b_{t+1} = \frac{E_t R_{t+1} + u_{t+1}}{\gamma} \cdot b_t + n_{t+1} \cdot A_{t+1} \cdot k_{t+1}^\alpha \quad (48)$$

$$s_{t+1} = \frac{E_t R_{t+1}}{\gamma} \cdot x_t + m_{t+1}^S \cdot A_{t+1} \cdot k_{t+1}^\alpha \quad \text{and} \quad x_t \leq \tau \quad (49)$$

$$d_{t+1} = \frac{E_t R_{t+1}}{\gamma} \cdot d_t + m_{t+1}^G \cdot A_{t+1} \cdot k_{t+1}^\alpha \quad (50)$$

where m_{t+1}^S and m_{t+1}^G reflect now collateral creation through both subsidies/taxes and public debt, i.e. $m_{t+1}^S \equiv \frac{s_{t+1}^N}{A_{t+1} \cdot k_{t+1}^\alpha}$ and $m_{t+1}^G \equiv \frac{d_{t+1}^N}{A_{t+1} \cdot k_{t+1}^\alpha}$.

A comparison between Equations (46)-(47) and (34)-(35) shows that the introduction of debt does not substantially affect the supply and demand of funds for investment. As long as $s'_t = s_t + d_t$ in all periods, any policy with subsidies s'_t that is fully financed through taxation can be perfectly replicated with an alternative policy with subsidies $s_t < s'_t$ that is financed partly through taxation and partly through debt. Equations (46) and (47) also show that, like bubbles and subsidies, the introduction of debt financing has conflicting effects on intermediation and capital accumulation. All else equals, debt issued in the past requires taxation and it reduces the supply of funds available for investment. This is why d_t enters with a negative sign in Equation (46). Debt issued in the present, though, makes it possible to reduce taxes on the current generation of borrowers thereby enabling them to expand their demand for credit. This is why m_{t+1}^G enters with a positive sign in Equation (47).

Now policy consists of a sequence for the triplet $\{x_t, m_t^S, m_t^G\}$. We adopt the convention that $s_{-1} = d_{-1} = 0$ so that s_0 and d_0 is determined by x_0 , m_0^S and m_0^D . We then propose a joint stochastic process for bubble return and bubble creation shocks: $\{u_t, n_t\}$, with $E_t u_{t+1} = 0$, $b_t \geq 0$ and $n_t \geq 0$ for all t . With this process at hand, we search for a sequence for the state variables (k_t, b_t, s_t, d_t) that satisfies $k_t \geq 0$ as well as Equations (46)-(50). If such a sequence exists, we say that the proposed stochastic process is an equilibrium. If such a sequence does not exist, we say that the proposed stochastic process is not an equilibrium.

4.3 Are there limits to debt financing?

A quick analysis of Equations (46)-(50) suggests that debt financing can help achieve policies that would not be feasible otherwise due to the fiscal constraint that $x_t \leq \tau$. What ensures, though, that the government can issue public debt contracts? That is, what are the limits to debt financing? This question seems relevant because an important difference between taxes and debt is that paying the former is mandatory while purchasing the latter is voluntary. In any period t , the debt issued by the LOLR is backed by taxes but also by the expectation of new debt that will be issued in period $t + 1$. If this expectation changes, so might the willingness of lenders to hold debt. Thus, debt financing seems subject to changes in investor sentiment that might limit the LOLR's ability

to manage the economy's collateral. In a sense, public credit might be just as bubbly as private credit.

To see whether this concern is justified, we focus on the case in which the LOLR uses the policy rule derived in Section 3.3 to intermediate all wages while setting $E_t R_{t+1} = \beta^{-1}$ for all t . We assume that τ is small, so that debt financing is required to fund the desired subsidies. In equilibrium, the most that the LOLR can promise to repay at time $t + 1$ is given by

$$E_t d_{t+1} \leq \tau + \gamma \cdot \beta \cdot E_t \{E_{t+1} d_{t+2}\},$$

i.e. expected debt payments cannot exceed the expected resources obtained through taxation and through the issue of new debt. But the expected debt payments that the LOLR can make at time $t + 2$ are themselves limited by expected taxation and the sale of new debt at $t + 3$. Taking this into account, we can write

$$E_t d_{t+1} \leq \tau + \gamma \cdot \beta \cdot E_t \{ \tau + \gamma \cdot \beta \cdot E_{t+1} \{ \tau + E_{t+2} d_{t+3} \} \}.$$

Iterating this process forward we obtain an upper bound for debt payments:

$$E_t d_{t+1} \leq \tau \cdot \sum_{j=0}^{\infty} (\gamma \cdot \beta)^j + \lim_{T \rightarrow \infty} (\gamma \cdot \beta)^T \cdot E_t d_{t+T}. \quad (51)$$

Equation (51) provides an expression for the LOLR's fiscal backstop. It says that expected debt payments are backed by fundamental resources, which correspond to the net present value of taxes, and by bubbly resources, which correspond to the public debt that is expected to be rolled over forever. The key aspect of this expression is that, since $\gamma \cdot \beta > 1$, the fundamental resources of the LOLR are infinite for any positive value of τ , regardless of how small it is. Thus, even if the LOLR must issue debt to finance its policies, it can always do so without being exposed to roll-over crises: the reason is that, no matter how large debt payments are, they are always fully backed by future taxes. In the bubbly economy, the fiscal backstop of the LOLR is unlimited!

The intuition behind this result is quite natural. The LOLR's fiscal backstop includes all future taxes, including those that will be paid by generations that are yet to be born. These tax revenues grow with the economy. When collateral is scarce and output is below potential, though, this growth rate is higher than the market interest rate and the net present value of tax revenues is

unbounded. Thus, the same condition that makes bubbly episodes possible guarantee that, even if the LOLR must issue debt to finance its policies, this debt is not prone to a rollover crisis because it is fully backed by tax revenues.

Admittedly, this result has been derived in a highly stylized setting. In particular, two key assumptions underlie the analysis. First, we have assumed that the LOLR can fully pledge its future tax revenues for debt payments, i.e. it has full commitment. Second, we have assumed that the LOLR can transform each unit of taxation into one unit of debt payment or subsidies, i.e. there are no inefficiencies associated to tax collection and expenditure. Although important, these assumptions are not as restrictive as they may seem. The presence of either commitment problems or inefficiencies would certainly affect the policy chosen by a LOLR, making it impossible to replicate the “optimal” bubble. Because both of these problems reduce the effectiveness of taxes and subsidies in managing the stock of collateral, they reduce the extent of the desired intervention in credit markets. But it is not difficult to show that, even in such an environment, the main insight of this section remains valid: as long as the LOLR finds it optimal to intervene, it always has the necessary fiscal backstop to finance the desired intervention.

5 On the size and type of bubbles

Up to this point, we have considered situations where the size of the bubble matters because it determines the collateral available to issue credit contracts. We have shown that this provides a rationale for macroprudential policy. A LOLR can improve on market outcomes by guaranteeing credit when bubbly collateral is scarce and by taxing credit when bubbly collateral is excessive.

But there are also situations in which it is not just the amount of bubbly collateral, but also its type that matters. To illustrate this, we develop two simple extensions of the model. In the first one, we introduce financial intermediaries that sell deposits contracts to lenders and purchase loan contracts from borrowers. In this case, the economy needs different types of bubbly collateral to back deposit and loan contracts. In the second extension, we introduce a set of risk-averse lenders. In this case, the economy needs different types of collateral to back safe and risky credit contracts. In these extensions, there is sometimes too much collateral of one type but too little collateral of the other type. Thus, to improve on market outcomes, the LOLR must simultaneously subsidize some types of credit while taxing others.

5.1 Deposit vs. loan bubbles

We introduce now a third type of individual, the intermediary, that has the same preferences as the other two types. Now borrowers and lenders cannot trade directly. Instead, their trade must go be done through intermediaries. Just as borrowers are the subset of individuals that have access to the production technology, one can think of intermediaries as the subset of individuals that have access to a screening or monitoring technology that is necessary to ensure that credit is profitable to all parties. To simplify the discussion, we assume that there are no productivity shocks, i.e. $A_t = 1$, ; and that there is no fundamental collateral, i.e. $\phi = 0$.

The bubbly economy now contains two distinct credit markets. In the market for deposits, intermediaries sell credit contracts to lenders: we use R_{t+1}^D to denote the gross, possibly state contingent interest rate paid by intermediaries on this credit. In the market for loans, intermediaries purchase credit contracts from borrowers: we use R_{t+1}^L to denote the gross interest rate paid by borrowers on these loans. We refer to the expected return on deposits, $E_t R_{t+1}^D$, as the deposit rate, and to the expected return on loans, $E_t R_{t+1}^L$, as the loan rate.

Now we have two types of credit bubbles, which we refer to as deposit and loan bubbles. Borrowers initiate and trade loan bubbles, while intermediaries initiate and trade deposit bubbles. Let B_t^D and B_t^L denote the value of deposit and loan bubbles in period t . Some of these bubbles are old and some of them are new. Thus, the aggregate bubbles evolve as follows:

$$B_{t+1}^D = R_{t+1}^{BD} \cdot B_t^D + B_{t+1}^{ND} \quad (52)$$

$$B_{t+1}^L = R_{t+1}^{BL} \cdot B_t^L + B_{t+1}^{NL} \quad (53)$$

where R_{t+1}^{BD} and R_{t+1}^{BL} are the returns to deposit and loan bubbles purchased from generation $t - 1$; and B_{t+1}^{ND} and B_{t+1}^{NL} the value of the bubbles initiated generation t . We refer to B_{t+1}^{ND} and B_{t+1}^{NL} as deposit and loan bubble creation and we assume that they are random and non-negative, i.e. $B_{t+1}^{ND} \geq 0$ and $B_{t+1}^{NL} \geq 0$.

Just like borrowers' loan contracts, deposit contracts must be collateralized. Since we have assumed that there is no fundamental collateral, this means that:

$$R_{t+1}^D \cdot D_t \leq B_{t+1}^D \quad (54)$$

$$R_{t+1}^L \cdot L_t \leq B_{t+1}^L \quad (55)$$

where D_t and L_t are the value of deposit and loan contracts, respectively.

With these assumptions, we can solve the optimization problem of all individuals and compute the equilibria in the labor, deposit, loan, and bubble markets. The analysis mirrors the one of Section 1, but it suffices to note that

$$E_t R_{t+1}^{BD} = E_t R_{t+1}^D \quad (56)$$

$$E_t R_{t+1}^{BL} = E_t R_{t+1}^L \quad (57)$$

in equilibrium, since otherwise demand for bubbles would be either zero or infinite and the markets for deposit and loan bubbles could not clear.

Taking all this into account, we can collapse the dynamics of the model to the following equations:

$$k_{t+1} \begin{cases} = \frac{(1-\alpha) \cdot k_t^\alpha - b_t^D - b_t^L}{\gamma} & \text{if } \beta \cdot E_t R_{t+1}^D > 1 \\ \in \left[0, \frac{(1-\alpha) \cdot k_t^\alpha - b_t^D - b_t^L}{\gamma} \right] & \text{if } \beta \cdot E_t R_{t+1}^D = 1 \end{cases} \quad (58)$$

$$E_t R_{t+1}^D = \min \left\{ E_t R_{t+1}^L, \frac{E_t n_{t+1}^D \cdot k_{t+1}^\alpha}{k_{t+1} + \gamma^{-1} \cdot b_t^L} \right\} \quad (59)$$

$$E_t R_{t+1}^L = \min \{ \alpha, E_t n_{t+1}^L \} \cdot k_{t+1}^{\alpha-1} \quad (60)$$

$$b_{t+1}^D = \frac{E_t R_{t+1}^D + u_{t+1}^D}{\gamma} \cdot b_t^D + n_{t+1}^D \cdot k_{t+1}^\alpha \quad (61)$$

$$b_{t+1}^L = \frac{E_t R_{t+1}^L + u_{t+1}^L}{\gamma} \cdot b_t^L + n_{t+1}^L \cdot k_{t+1}^\alpha \quad (62)$$

where $\{u_{t+1}^D, u_{t+1}^L, n_{t+1}^D, n_{t+1}^L\}$ are the bubble-return and the bubble-creation shocks of deposit and loan bubbles. Equations (58)-(62) generalize Equations (14)-(16), and they provide a full description of the dynamics of the economy in the presence of deposit and loan bubbles.

The key innovation relative to our baseline model is that now it is both, the amount and the distribution of bubbly collateral that matter for investment. Equation (58) shows that regardless of their type, bubbles divert resources and crowd out investment. But whether loan and deposit bubbles have crowding-in effects depends on which collateral constraint binds, if any. Equation (59) represents intermediaries' demand for credit. If intermediaries have enough collateral, the deposit rate equals the loan rate. Otherwise intermediaries are constrained and the deposit rate is lower than the loan rate. Equation (60) represents borrower's demand for credit. If borrowers

have enough collateral, the loan rate equals the return to investment. Otherwise borrowers are constrained and the loan rate is lower than the return to investment.

Thus, there are two reasons why the bubbly economy may find itself in the region of partial intermediation: (i) because intermediaries do not have the collateral to raise all wages through deposits; or (ii) because borrowers do not have enough collateral to raise all deposits through loans. In the first case, deposit bubble creation ($E_t n_{t+1}^D > 0$) is expansionary because it raises the collateral of intermediaries and thus total deposits. Loan bubble creation ($E_t n_{t+1}^L > 0$), however, is contractionary because its only effect is to raise the loan rate. There is too little deposit collateral and too much loan collateral, so that the right policy requires subsidizing deposits while taxing loans. In the second case, the opposite is true. There is too little loan collateral, and the right policy requires subsidizing loans.

5.2 Safe vs. risky bubbles

We now extend the basic model to allow for risk-averse individuals. In particular, we assume that a fraction ρ of the lenders have the following preferences:

$$U_t^i = C_{t,t}^i + \beta \cdot \min_t C_{t,t+1}^i \quad (63)$$

where the operator $\min_t \{\cdot\}$ indicates the lowest bound of the support of the corresponding variable. To simplify the discussion, we assume that there are no productivity shocks, i.e. $A_t = 1$; and that there is no fundamental collateral, i.e. $\phi = 0$.

The presence of risk-averse individuals induces borrowers to issue two types of credit contracts, safe and risky. Let R_{t+1}^S and R_{t+1}^R respectively denote the ex-post interest rates on these contracts. Naturally, safe contracts promise a noncontingent interest rate but risky contracts do not. It follows that now borrowers face two credit constraints:

$$R_{t+1}^R \cdot L_t^R + R_{t+1}^S \cdot L_t^S \leq B_{t+1} \quad (64)$$

$$R_{t+1}^S \cdot L_t^S \leq \min_t B_{t+1} \quad (65)$$

Since we have assumed that $\phi = 0$, there is only bubbly collateral in this economy. Equation (64) says that the total payments promised to lenders cannot exceed the total amount of collateral. Equation (65) says that the amount of safe payments that are promised cannot exceed the minimum

value of collateral. Otherwise, these payments would need to be state contingent and could not be riskless. Thus, while all collateral in this economy is bubbly, it comes in two types. The stock of safe collateral is given by $\min_t B_{t+1}$, while the stock of risky collateral is given by $B_{t+1} - \min_t B_{t+1}$.

If there is enough safe collateral to ensure that the credit constraint in Equation (65) is not binding, all the results are the same as in the baseline model. Basically, all credit is priced in a risk-neutral fashion: risk-averse lenders purchase only safe credit and all risky credit is in the hands of risk-neutral lenders. But if there is not enough safe collateral, a new and interesting situation can arise. Because risk-averse lenders do not want to purchase risky credit, there may be full intermediation of risk-neutral savings but partial intermediation of risk-averse savings. In such a situation, the law of motion of the economy is given by:

$$k_{t+1} = \beta \cdot \min_t b_{t+1} + (1 - \rho) \cdot \frac{1 - \alpha}{\gamma} \cdot k_t^\alpha - \frac{b_t}{\gamma} \quad (66)$$

$$E_t R_{t+1}^R = \frac{E_t n_{t+1} \cdot k_{t+1}^\alpha - \min_t b_{t+1}}{k_{t+1} - \beta \cdot \min_t b_{t+1}} \quad (67)$$

$$b_{t+1} = \frac{E_t R_{t+1}^R + u_{t+1}}{\gamma} \cdot b_t + n_{t+1} \cdot k_{t+1}^\alpha \quad (68)$$

Equation (66) says that investment equals total savings minus the bubble: the difference with the basic model is that only risk neutral lenders save their entire income, while risk-averse lenders do not because there is not enough safe collateral. Thus, this economy has too much risky collateral and too little safe collateral.

It is straightforward to show that increases in $\min_t n_{t+1}$ are expansionary since they raise savings and crowd-in capital, while increases in $E_t n_{t+1} - \min_t n_{t+1}$ are contractionary since they reduce funds available for investment and crowd-out capital. In this example, the right policy would expand one bubble at the expense of the other. In terms of the notation used in section 3, the LOLR would set a negative value for $E_t m_t - \min_t m_{t+1}$, but a positive value for $\min_t m_{t+1}$.

6 What have we learned?

So what do we take home from this paper? Credit booms and busts are a fact of life in modern economies. There is a widespread view among macroeconomists that fluctuations in collateral are an important driver of these fluctuations in credit. This paper builds on this view and makes the following observations:

1. Economies with binding borrowing constraints have two types of collateral, fundamental and bubbly. Fluctuations in both types of collateral generate boom-bust cycles in credit, investment and growth. These fluctuations might be driven by traditional or fundamental shocks, but also by changes in investor sentiment or market expectations. Both types of shock affect the amounts of fundamental and bubbly collateral.
2. Bubbly collateral raises equilibrium credit (“crowding-in”) but diverts part of this credit away from investment (“crowding-out”). When bubbles are small, the crowding-in effect dominates and investment and output increase. When bubbles are large, the crowding out effect dominates and investment and output are low. There is therefore an “optimal” bubble size that trades off these two effects to maximize long-term output and consumption.
3. Markets are generically unable to provide the optimal amount of bubbly collateral, but a lender of last resort can replicate the “optimal” bubble allocation by taxing credit when bubbly collateral is excessive and subsidizing it when it is insufficient. Such a policy can be characterized as leaning-against-the-wind, but not as a policy of preventing bubbles. It cannot be characterized as a bailout policy either, since the credit-market interventions that are required to implement it pay for themselves.

These results provide a coherent and rich view of credit booms and busts, in which both fundamental and bubbly collateral play a key role. They also provide a useful blueprint to guide policy in dealing with credit bubbles. But the theory has limitations and there is still much work to be done.

A first important limitation is that the model assumes perfect information, so that everyone observes the gap between the optimal bubble and the existing one: the role of policy is simply to bridge this gap. Reality is more complicated because market participants and policymakers may be uncertain as to whether fluctuations are driven by fundamental or bubbly collateral. Introducing this type of uncertainty is an important next step in this research agenda.

A second limitation of the theory is that it essentially takes fundamental collateral as exogenous. One may think, though, that fundamental collateral is “produced” by the financial system when it invests in the screening and monitoring of borrowers. Bubbly collateral provides an inexpensive alternative to fundamental collateral because it is sustained by market expectations. This may entail costs, however: by discouraging investment in fundamental collateral, bubbly collateral may be expansionary in the short run at the expense of larger downturns when bubbly episodes end.

Taking into account these negative incentive effects of bubbles, and analyzing how they impact the design of policy, is another exciting next step in this research agenda.

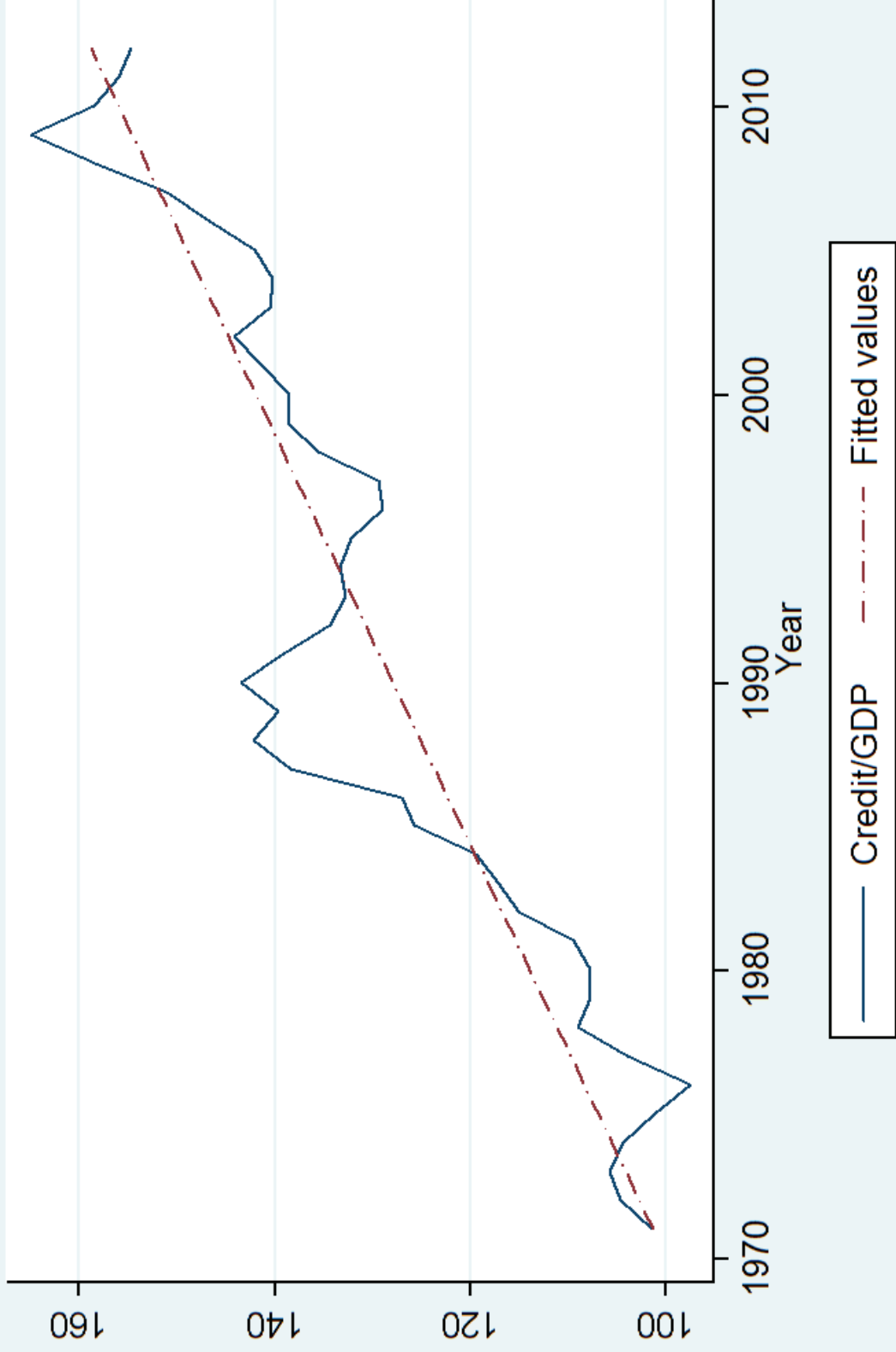
References

- [1] Aoki, K. and K. Nikolov (2011), “Bubbles, Banks and Financial Stability”, working paper CARF-F-253, The University of Tokio.
- [2] Bernanke, B. and M. Gertler (1989), “Agency Costs, Net Worth and Business Fluctuations”, *American Economic Review* 79, 14-31.
- [3] Caballero, R. and A. Krishnamurthy (2006), “Bubbles and Capital Flow Volatility: Causes and Risk Management”, *Journal of Monetary Economics* 53(1), 33-53.
- [4] Claessens, S., A. Kose and M. Terrones (2011), “Financial Cycles: What? How? When?”, *NBER International Seminar on Macroeconomics*, University of Chicago Press, 7(1), 303 - 344.
- [5] Dang, T.V., G. Gorton and B. Holmstrom (2012), “Ignorance, Debt and Financial Crises”, mimeo, Yale.
- [6] Dell’Ariccia, G., D. Igan, L. Laeven and H. Tong, with B. Bakker and J. Vandenbussche (2012), “Policies for Macrofinancial Stability: How to Deal with Credit Booms”, IMF Staff Discussion Note, SDN 12/06.
- [7] Dell’Ariccia, G., D. Igan and L. Laeven (2012), “Credit Booms and Lending Standards: Evidence from the Subprime Mortgage Market”, *Journal of Money, Credit, and Banking* 44(2-3), 367-384..
- [8] Dell’Ariccia, G. and R. Marquez (2006), “Lending Booms and Lending Standards”, *The Journal of Finance* 51(5), 2511–2546.
- [9] Farhi, E. and J. Tirole (2011), “Bubbly Liquidity”, *Review of Economic Studies* 79, 678-706.
- [10] Farhi, E. and J. Tirole (2012), “Collective Moral Hazard, Maturity Mismatch and Systemic Bailouts,” *American Economic Review* 102, 60-93.
- [11] Geerolf, F. (2013), “Reassessing Dynamic Efficiency”, mimeo, Toulouse School of Economics.

- [12] Gertler, M., and N. Kiyotaki (2010), “Financial Intermediation and Credit Policy in Business Cycle Analysis”, in Friedman and Woodford, *Handbook of Monetary Economics*, Vol. 3A, Elsevier.
- [13] Gorton, G. and P. He (2008), “Bank Credit Cycles”, *Review of Economic Studies* 75(4), 1181-1214.
- [14] Gorton, G. and G. Ordoñez (2014), “Collateral Crises”, *American Economic Review* 104(2), 343-378.
- [15] Gourinchas, P.O., R. Valdes and O. Landerretche (2001), “Lending Booms: Latin America and the World”, *Economia* 1(2), 47-99.
- [16] Kiyotaki, N., and J. Moore (1997), “Credit Cycles”, *Journal of Political Economy* 105, 211-248.
- [17] Kiyotaki, N. and J. Moore (2008), “Liquidity, Business Cycles and Monetary Policy”, mimeo, Princeton University.
- [18] Kocherlakota, N. (2009), “Bursting Bubbles: Consequences and Cures”, mimeo, Federal Reserve Bank of Minneapolis.
- [19] Martin, A. (2008), “Endogenous Credit Cycles”, mimeo, CREI.
- [20] Martin, A. and J. Ventura (2011), “Theoretical Notes on Bubbles and the Current Crisis”, *IMF Economic Review* 59, 6-40.
- [21] Martin, A. and J. Ventura (2012), “Economic Growth with Bubbles”, *American Economic Review* 102, 3033-3058.
- [22] Matsuyama, K. (2007), “Credit Traps and Credit Cycles”, *American Economic Review* 97(1), 503-516.
- [23] Mendoza, E. and M. Terrones (2012), “An Anatomy of Credit Booms and their Demise”, WP 18379, NBER.
- [24] Mian, A. and A. Sufi (2009), “The Consequences of Mortgage Credit Expansion: Evidence from the U.S. Mortgage Default Crisis”, *The Quarterly Journal of Economics* 124(4), 1449-1496.
- [25] Miao, J. and P. Wang (2011), “Bubbles and Credit Constraints”, mimeo, Boston University.

- [26] Rancière, R., A. Tornell and F. Westermann (2008), “Systemic Crises and Growth”, *The Quarterly Journal of Economics* 123(1), 359-406.
- [27] Ruckes, M. (2004), “Bank Competition and Credit Standards”, *The Review of Financial Studies* 17(4), 1073-1102.
- [28] Samuelson, P. (1958), “An Exact Consumption-loan Model of Interest with or without the Social Contrivance of Money”, *Journal of Political Economy* 66, 467-482.
- [29] Schularick, M. and A. Taylor (2012), “Credit Booms Gone Bust: Monetary Policy, Leverage Cycles and Financial Crises, 1870-2008”, *American Economic Review* 102(2), 1029–1061.
- [30] Tirole, J. (1985), “Asset Bubbles and Overlapping Generations”, *Econometrica* 53 (6), 1499-1528.
- [31] Ventura, J. (2011), “Bubbles and Capital Flows”, *Journal of Economic Theory* 147 (2), 738-758.

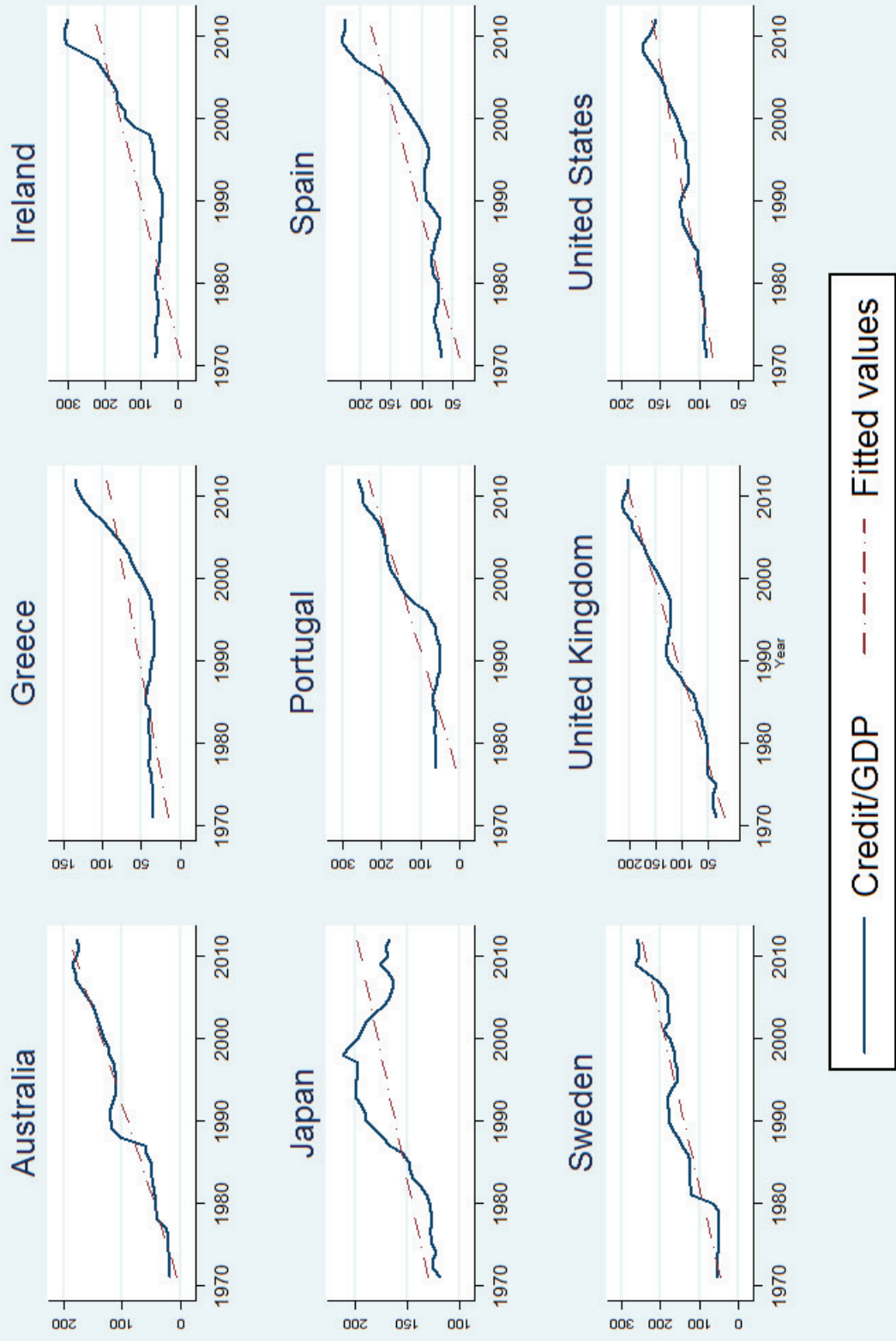
Credit/GDP Trends for OECD Countries



Date Source - *Long series on credit to private non-financial sectors* by the Bank of International Settlements (2013). The plot above includes all OECD countries except Chile, Estonia, Israel, Slovak Republic and Slovenia. Slovak Republic joined the OECD in 2000, the rest in 2010.

Figure 1: Credit/GDP for OECD Countries

Credit/GDP Trend



Date Source - Long series on credit to private non-financial sectors by the Bank of International Settlements (2013).

Figure 2: Selected OECD Countries with Credit/GDP trends

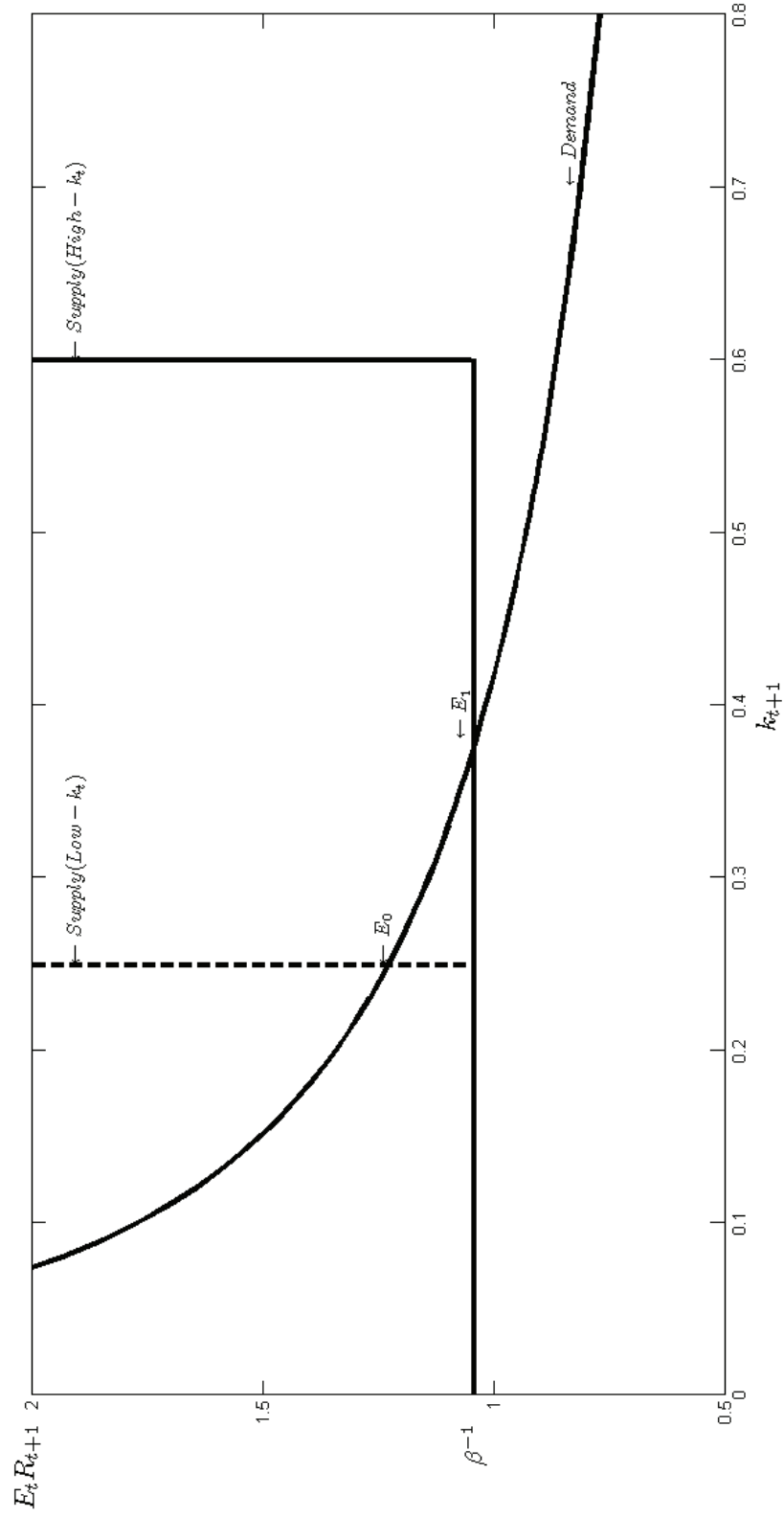


Figure 3: Demand and supply of funds for investments

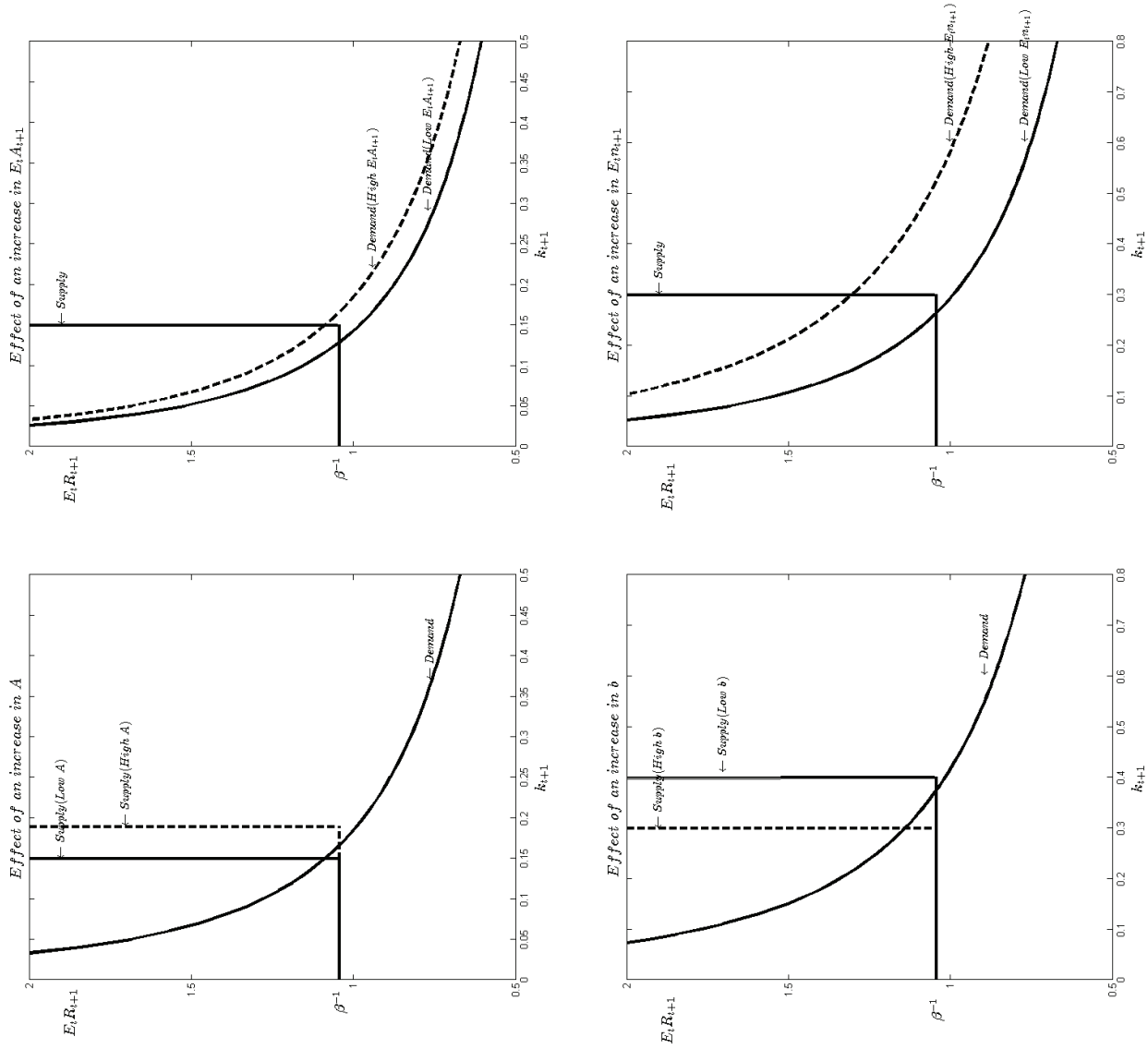


Figure 4: Demand and supply of funds in the presence of shocks

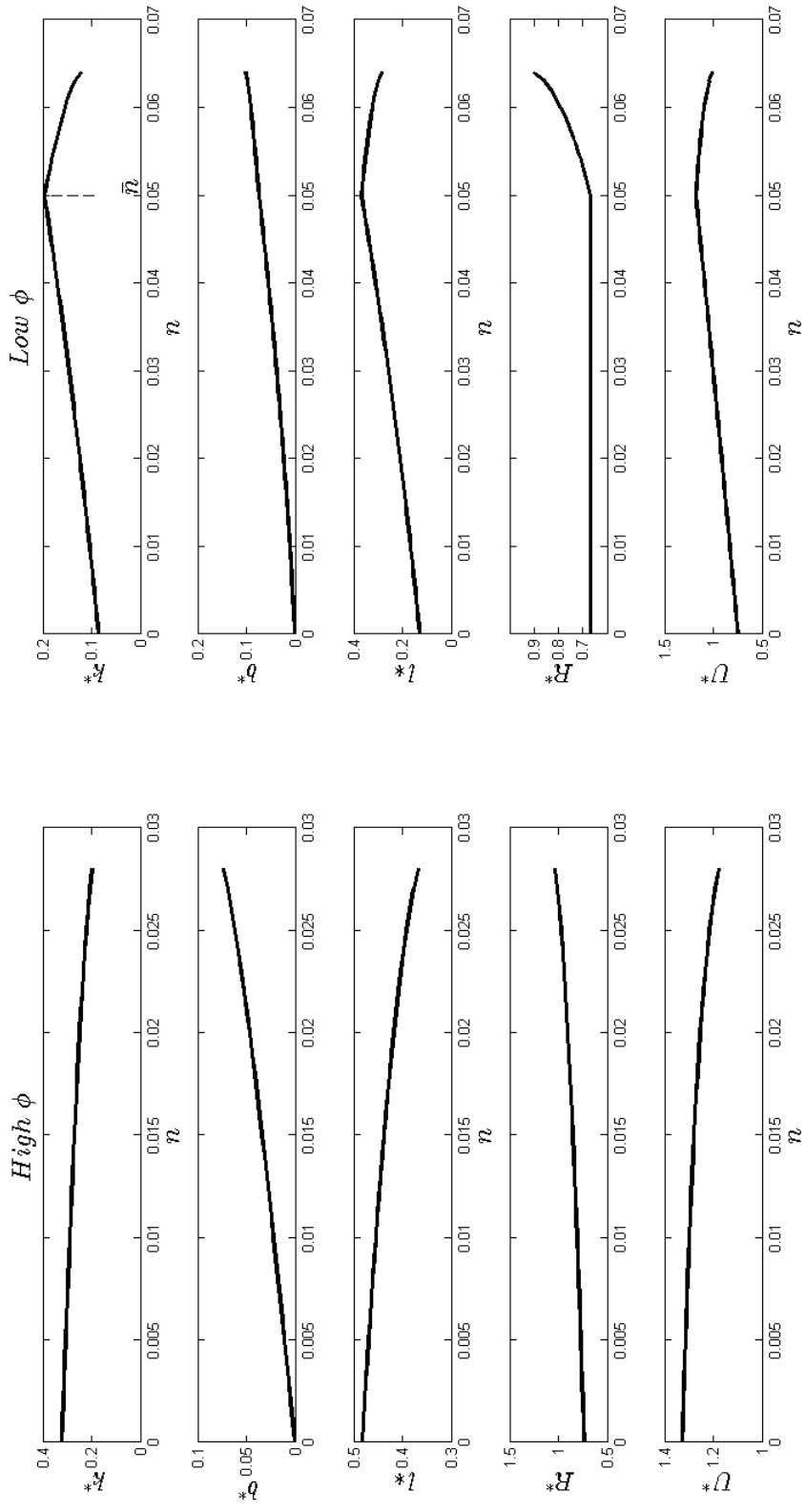
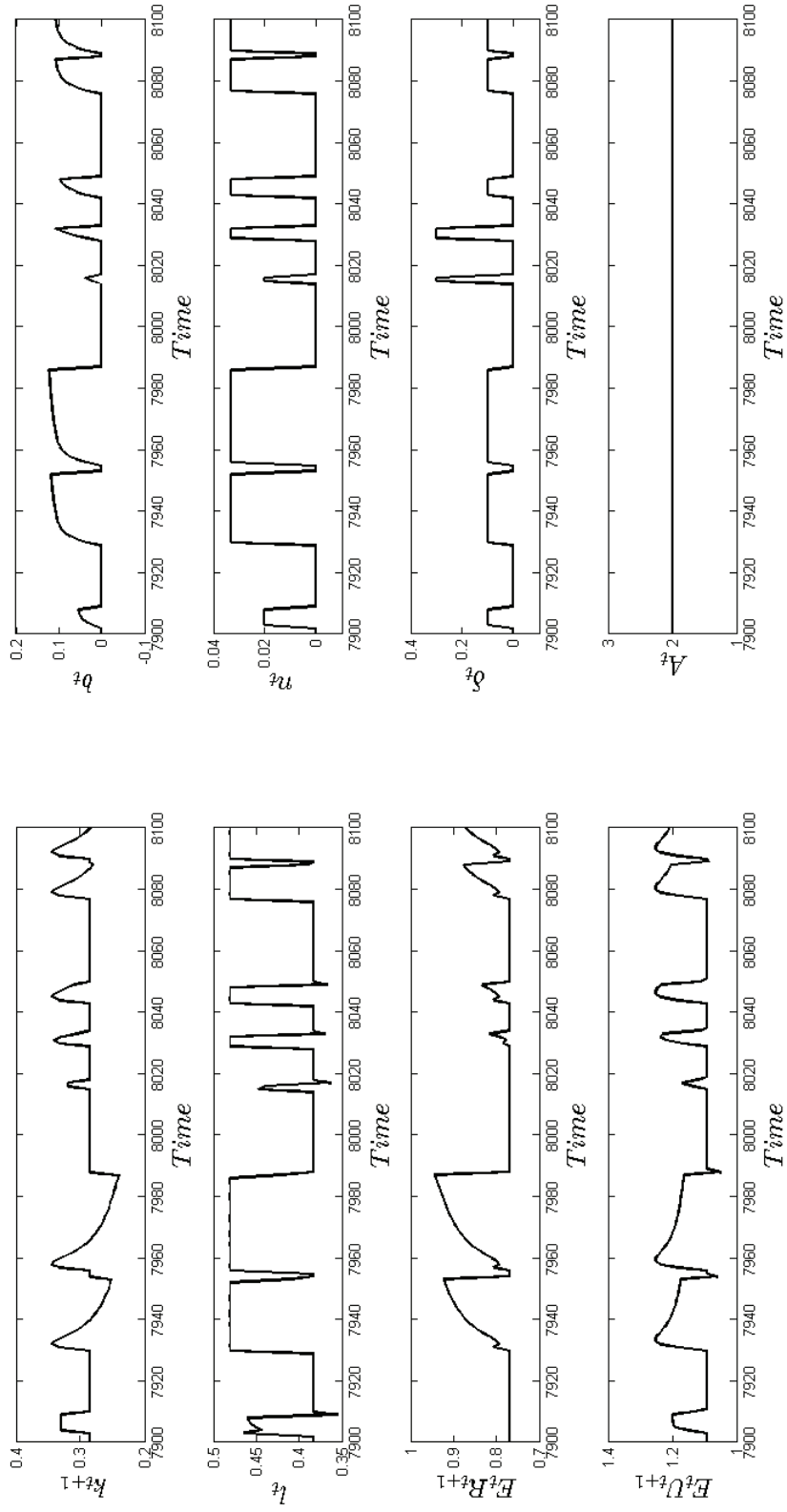
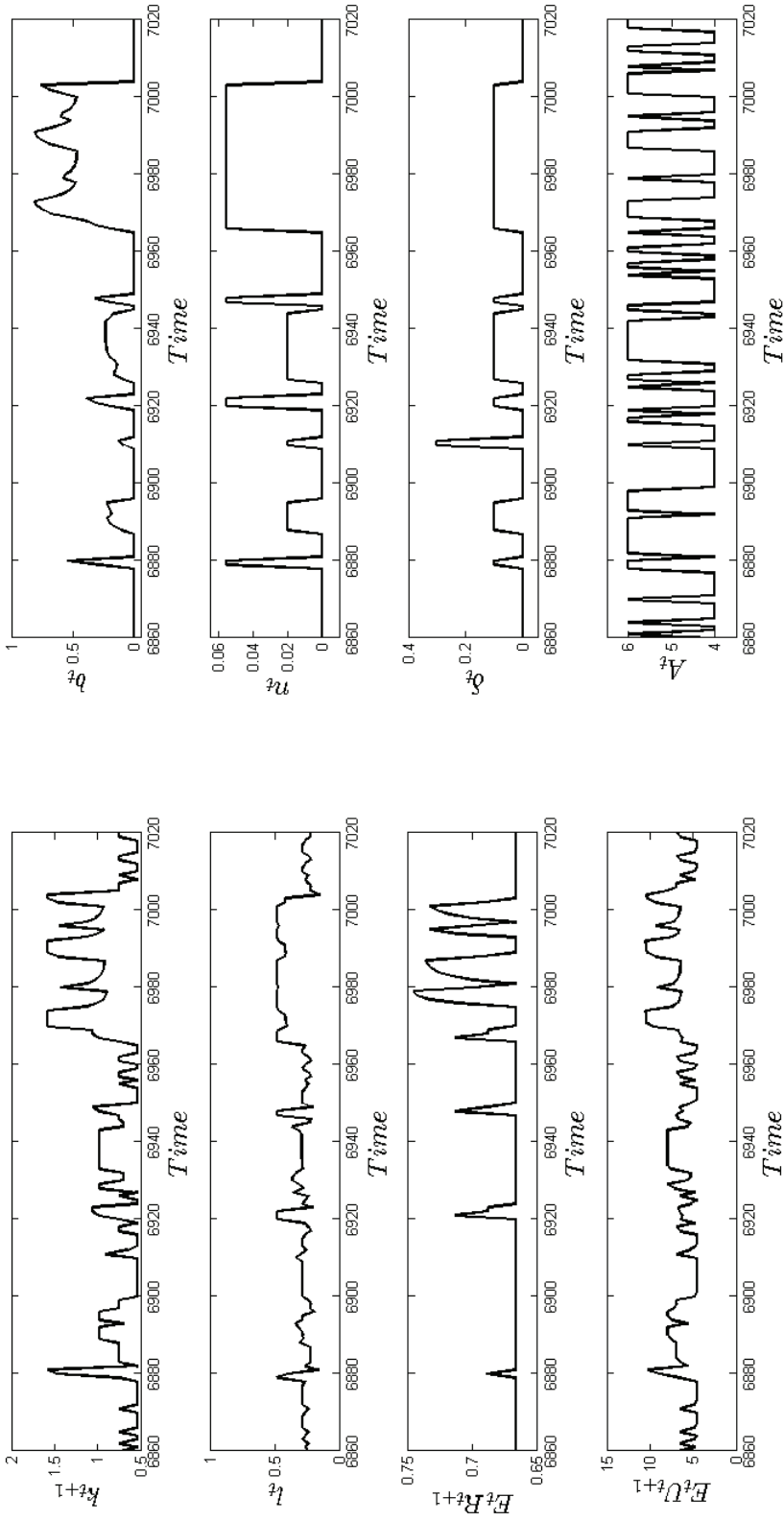


Figure 5: Deterministic Steady States



Summary Statistics		
k_{t+1}	μ	0.297
	s.d.	0.027
$E_t U_{t+1}$	μ	1.136
	s.d.	0.079

Figure 6: Simulated economy with bubble shocks and constant productivity



Summary Statistics		
k_{t+1}	μ	0.809
	<i>s.d.</i>	0.288
$E_t U_{t+1}$	μ	6.396
	<i>s.d.</i>	1.618

Figure 7: Simulated economy with bubble and productivity shocks

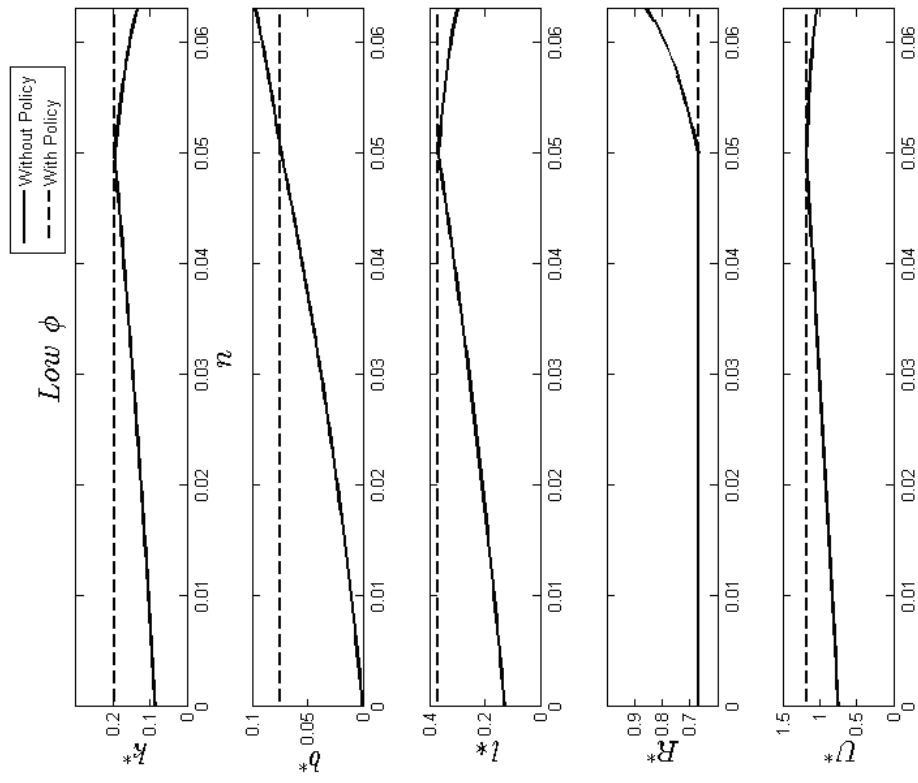


Figure 8: Effect of policy in an economy with bubble shocks and constant productivity

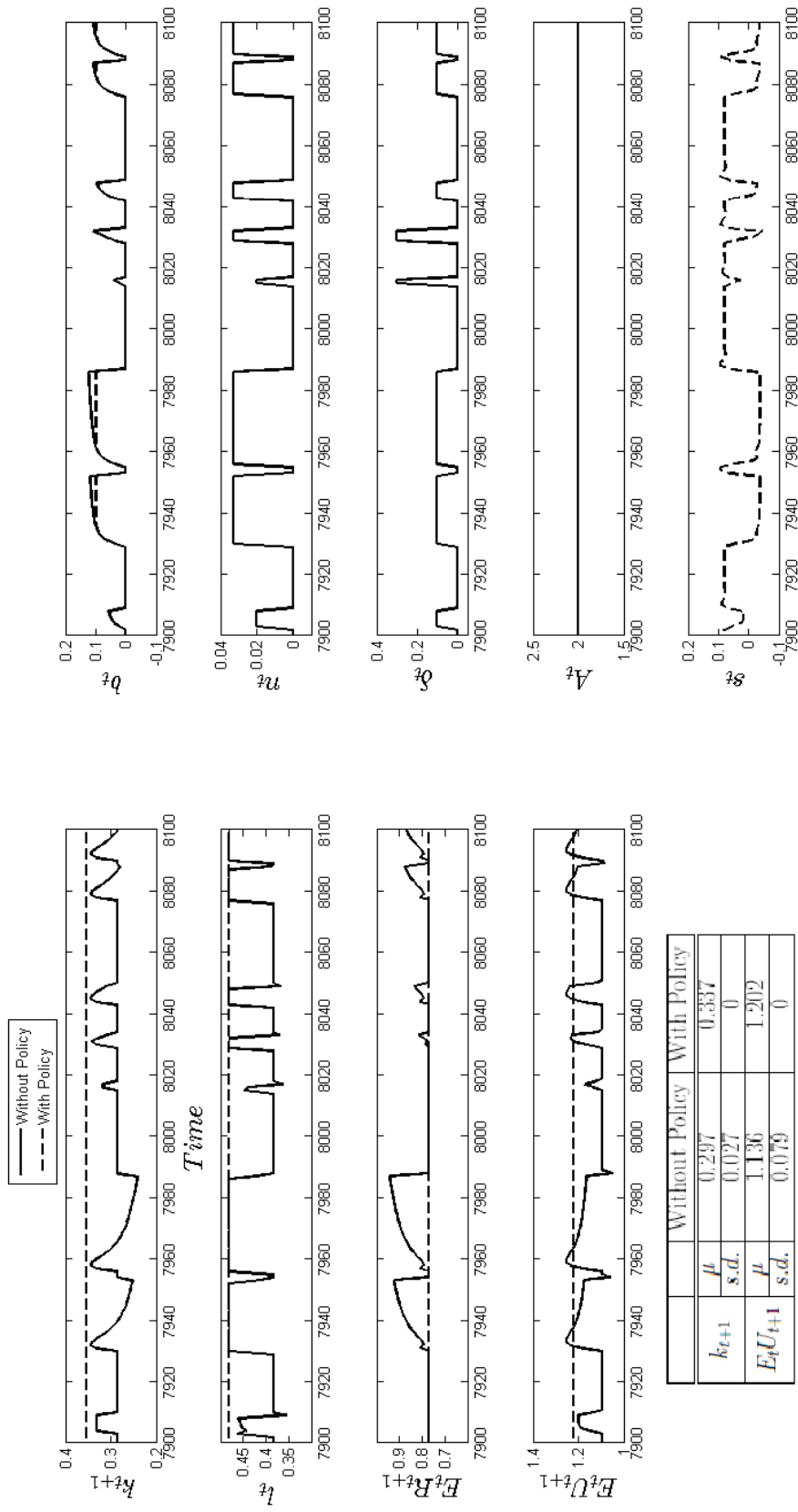


Figure 9: Simulated economy with bubble shocks and constant productivity (with and without policy)

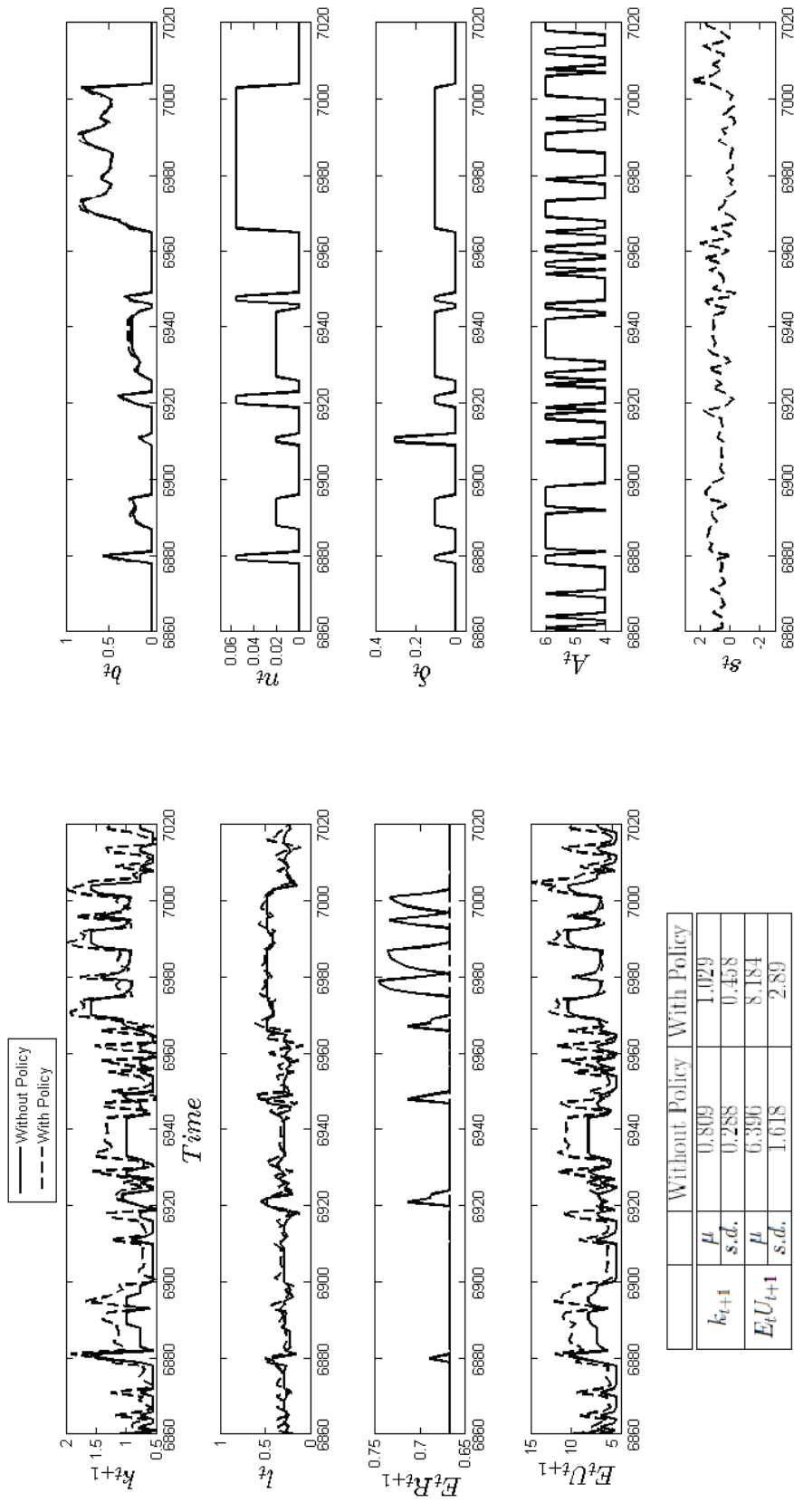


Figure 10: Simulated economy with bubble and productivity shocks (with and without policy)