

NBER WORKING PAPER SERIES

GROWTH OPTIONS AND FIRM VALUATION

Holger Kraft  
Eduardo S. Schwartz  
Farina Weiss

Working Paper 18836  
<http://www.nber.org/papers/w18836>

NATIONAL BUREAU OF ECONOMIC RESEARCH  
1050 Massachusetts Avenue  
Cambridge, MA 02138  
February 2013

We thank participants of the 12th Colloquium on Financial Markets in Cologne, the Federal Reserve Bank of San Francisco Seminar, the 20th Annual Meeting of the German Finance Association and the Arne Ryde Workshop in Financial Economics in Lund for helpful comments and suggestions. We also thank Vikas Agarwal, Michael Brennan, Thomas Dimp, Dieter Hess, and Paul Soederlind for valuable comments and discussions. Finally, we thank an anonymous referee and John A. Doukas (the editor) for their suggestions which we feel improved the quality of the paper. All remaining errors are of course our own. Holger Kraft gratefully acknowledges financial support by Deutsche Forschungsgemeinschaft (DFG) as well as the Center of Excellence SAFE, funded by the State of Hessen initiative for research LOEWE. The views expressed herein are those of the authors and do not necessarily reflect the views of the National Bureau of Economic Research.

NBER working papers are circulated for discussion and comment purposes. They have not been peer-reviewed or been subject to the review by the NBER Board of Directors that accompanies official NBER publications.

© 2013 by Holger Kraft, Eduardo S. Schwartz, and Farina Weiss. All rights reserved. Short sections of text, not to exceed two paragraphs, may be quoted without explicit permission provided that full credit, including © notice, is given to the source.

Growth Options and Firm Valuation  
Holger Kraft, Eduardo S. Schwartz, and Farina Weiss  
NBER Working Paper No. 18836  
February 2013, Revised April 2017  
JEL No. G12

### **ABSTRACT**

This paper studies the relation between firm value and a firm's growth options. We find strong empirical evidence that (average) Tobin's Q increases with firm-level volatility. The significance mainly comes from R&D firms, which have more growth options than non-R&D firms. By decomposing firm-level volatility into its systematic and unsystematic part, we document that only idiosyncratic volatility has a significant effect on valuation. Second, we analyze the relation of stock returns to realized contemporaneous idiosyncratic volatility and R&D expenses. Single sorting on idiosyncratic volatility yields a significant negative relation between portfolio alphas and contemporaneous idiosyncratic volatility for non-R&D portfolios, whereas in a four-factor model the portfolio alphas of R&D portfolios are all positive. Double sorting on idiosyncratic volatility and R&D expenses also reveals these differences between R&D and non-R&D firms. To control for several explanatory variables simultaneously, we also run panel regressions of firm-level alphas which confirm the relative importance of idiosyncratic volatility that is amplified by R&D expenses. Finally, we show that our results are robust to the definition of idiosyncratic volatility. We tease out the "true" idiosyncratic volatilities by performing a principal-component analysis on the residuals of Fama-French regressions and find that our main results still hold for this alternative definition of idiosyncratic volatility.

Holger Kraft  
Goethe University  
Grueneburgplatz 1  
65323 Frankfurt am Main  
Germany  
holgerkraft@finance.uni-frankfurt.de

Farina Weiss  
Goethe University  
Frankfurt, Germany  
Farina.Weiss@hof.uni-frankfurt.de

Eduardo S. Schwartz  
Anderson Graduate School of Management  
UCLA  
110 Westwood Plaza  
Los Angeles, CA 90095  
and NBER  
eduardo.schwartz@anderson.ucla.edu

# 1 Introduction

The market value of a firm is the sum of the present value of the cash flows generated by the assets in place and its growth options.<sup>1</sup> Real option theory suggests that values of growth options are positively related to the volatility of firm value (or a firm's cash flows).<sup>2</sup> Everything else equal, we thus expect the market value of a firm to increase in volatility. Depending on whether a firm belongs to a growing or mature industry, this dependence is more or less strong. For instance, R&D as opposed to non-R&D firms are supposed to have more growth options and in turn should be more affected by volatility. In this paper, we first study the relation of firm value and volatility and find empirical evidence that Tobin's Q is positively related to a firm's stock volatility that serves as a proxy for the volatility of the underlying growth options.<sup>3</sup> As suggested by real options theory, we document that this relation is much stronger for R&D firms than for non-R&D firms.

Volatility however consists of a systematic and an unsystematic (idiosyncratic) part. By definition, the systematic part should be priced and thus expected returns should be affected by systematic volatility. In contrast standard capital-market theory suggests that idiosyncratic risk has no effect on expected returns.<sup>4</sup> Therefore, the effects of these two volatility components on firm value are different: Although both components increase the value of growth options, systematic volatility also increases discount rates that are used to discount future cash flows of a firm. Hence, the effect of systematic volatility on firm value is ambiguous. We thus decompose volatility into its systematic and unsystematic part. Our line of argument so far suggests that the effect of unsystematic volatility should be stronger than the effect of systematic volatility. Besides, the effect of unsystematic volatility should be the strongest for firms that have a lot of growth options (e.g. R&D firms). Our empirical results support these predictions: Whereas Tobin's Q is hardly affected by systematic volatility, there is a pronounced effect for unsystem-

---

<sup>1</sup>See, e.g., Berk, Green, and Naik (1999).

<sup>2</sup>Brennan and Schwartz (1985) and McDonald and Siegel (1986).

<sup>3</sup>See, e.g., Grullon, Lyandres, and Zhdanov (2012).

<sup>4</sup>There are however models where unsystematic risk is priced. For instance, Merton (1987) sets up a model where investors hold undiversified portfolios and thus demand a risk premium for unsystematic risk.

atic volatility. In particular, the effect for R&D firm observations is significantly stronger than for non-R&D firm observations.

Importantly, we also extend the existing literature by addressing concerns about missing factors in the Fama-French model (see, e.g., Chen and Petkova (2012)). We perform a principal-component analysis (PCA) on the residuals of the Fama-French regressions that are used to calculate the idiosyncratic volatility. This allows us to tear out the systematic part of these residuals and to compute the “truly” idiosyncratic volatility which is the idiosyncratic volatility after subtracting the first two factor of the PCA.<sup>5</sup> On average the first factor explains about 2% of the remaining variation. Since there is not much systematic variation left in the residuals of the Fama-French regressions, it turns out that our above described results stand even for this alternative definition of idiosyncratic volatility.

Finally, we analyze the relation of realized stock returns to realized contemporaneous idiosyncratic volatility (ivol) and R&D expenses where we again split the whole sample into sub-samples of R&D and non-R&D observations. Single sorting on idiosyncratic volatility yields a significant negative relation between abnormal stock returns and contemporaneous ivol for non-R&D portfolios,<sup>6</sup> whereas in a four-factor model the portfolio alphas of R&D portfolios are all positive. This confirms the intuition that the values of growth options increase in (idiosyncratic) volatility and thus a larger ivol leads to higher contemporaneous returns. We also document that, although for R&D portfolios the average Tobin’s Q and R&D expenses increase in average ivol, the relation is flat for non-R&D portfolios.<sup>7</sup> In other words, both sub-samples are very distinct with respect to the sizes and patterns of R&D expenses and Tobin’s Q. On the

---

<sup>5</sup>We thank an anonymous referee for this suggestion. This is similar to Herskovic, Kelly, Lustig, and Nieuwerburgh (2016), but they perform a PCA on the excess returns, whereas we run it on the residuals of Fama-French regressions.

<sup>6</sup>Notice that we consider a contemporaneous relation between the two. This should not be confused with the so-called “ivol anomaly” which refers to the empirical finding that stocks with high (low) idiosyncratic volatility have abnormally low and negative (high and positive) expected average returns. See, e.g., Ang, Hodrick, Xing, and Zhang (2006).

<sup>7</sup>By definition, R&D expenses are zero for non-R&D portfolios so that these portfolios have trivially a flat relation for R&D expenses.

contrary, the average ivols of the portfolios are similar. This finding is in line with our panel regression results that idiosyncratic volatility is particularly pricing relevant when it is interacted with an R&D dummy. Double sorting on idiosyncratic volatility and R&D expenses supports our findings for portfolio alphas: For high R&D observations all (three and four-factor) alphas are positive, whereas for low or zero R&D observations alphas in general are positive for low-ivol portfolios and negative for high-ivol portfolios. Besides, all difference portfolios (high minus low or zero R&D for given ivol level) have positive alphas where 17 out of 20 are individually significant.

Since a single-sort on ivol simultaneously leads to orderings with respect to other variables (e.g. size, leverage, firm-level volatility, skewness), we also run panel regressions of firm-level alphas where we can simultaneously control for several explanatory variables. Our results suggest that firm-level alphas depend on firm-level volatility, but predominately via its idiosyncratic part. These effects are amplified for R&D observations. Again we address concerns about missing factors in the Fama-French model. We thus run our main regressions using the “true” idiosyncratic volatilities (after performing a PCA) and confirm that the results essentially also hold for this alternative definition of ivol.

Our paper is related to an increasing literature on the cross-sectional relation between returns and volatility or idiosyncratic volatility. Duffee (1995) documents a positive relation between stock returns and volatility at the firm level. Concerning idiosyncratic volatility, several empirical studies find evidence that expected returns vary systematically with idiosyncratic risk. This is in contrast to standard capital-market models such as the CAPM and the Fama-French model, which predict no relation between expected returns and idiosyncratic volatility. Ang, Hodrick, Xing, and Zhang (2006, 2009) measure idiosyncratic volatility relative to the Fama-French model and find a negative relation between expected returns and idiosyncratic risk (ivol anomaly). By measuring volatility in a different way, Fu (2009) and Fink, Fink, and He (2012) find that expected returns and idiosyncratic volatility are positively related. Our paper adds to this extensive literature. Motivated by the work from Cochrane (2011), we study the cross-sectional price variation and first concentrate on firm value. In contrast to the existing

literature, we then study the *contemporaneous* relation between (abnormal) returns and idiosyncratic volatility, which complements our analysis for values. Similar to our results, Fink, Fink, and He (2012) find empirical evidence for a positive contemporaneous ivol-return relation. Our paper is also related to the real option pricing literature that started with the papers by Brennan and Schwartz (1985) and McDonald and Siegel (1986). Option values increase in volatility (both systematic and idiosyncratic), which indicates why idiosyncratic volatility might be priced if a firm has growth options.

Several papers have examined the effect of volatility on returns (but not the effect of volatility on prices) and use real option theory to explain their observations. Grullon, Lyandres, and Zhdanov (2012) find evidence that expected returns increase in (firm-level) volatility. This relation is much stronger for firms with more real options. An important difference with our paper is however that they consider expected returns and do not decompose volatility into a systematic and an idiosyncratic part. Chen and Petkova (2012) consider idiosyncratic volatility and focus on the ivol anomaly. They suggest that their observed negative relation between idiosyncratic volatility and return in the Fama-French model arises from a missing factor. By introducing a new factor (a component of aggregated market variance), they can explain the ivol anomaly and relate this factor to a firm's growth options. In our paper, we also examine the effect of contemporaneous volatility on firm values and propose a growth option explanation for cross-sectional differences in firm values. We find clear evidence that firm value increases in firm-level volatility and this effect is stronger for firms with higher R&D expenses. These results are in line with the findings of Connolly and Hirschey (2005) and Czarnitzki, Hall, and Oriani (2006), who show that the amount of R&D expenses is a significant determinant of firm value.

Cao, Simin, and Zhao (2008) provide a link between growth options and the value-weighted average of idiosyncratic firm-level volatility. They show that average aggregated idiosyncratic volatility is positively related to growth options and that these options can explain the increasing aggregate idiosyncratic volatility over the last decades. Bekaert, Hodrick, and Zhang (2013) study aggregate idiosyncratic volatility in 23 countries and document that it is highly

correlated across countries. They find that idiosyncratic volatility can be explained by growth opportunities and a business cycle sensitive risk indicator. These findings are in line with our results that firm values increase in (idiosyncratic) volatility due to growth options.

Pastor and Veronesi (2003) develop a framework for valuing stocks whose average future profitability is unknown. They find that uncertainty about a firm's average profitability increases its idiosyncratic return volatility. This uncertainty is especially large for the newly listed firms. Kogan and Papanikolaou (2012) develop a theoretical model in which a firm's sensitivity to technological shocks is a function of the ratio between growth opportunities and firm value. Firms with more growth options benefit more from positive technological shocks than firms with limited investment opportunities. Hence, differences in the ratio between growth opportunities and firm value lead to difference in returns, and technological shocks lead to differences in stock returns across firms.

Finally, our paper is related to the q-theory of investment that studies the relation between investment decisions and firm value. Belo and Zhang (2010) combine q-theory and asset pricing literature. They develop a neoclassical model to study the determinants of firm value and focus on the investment-to-capital ratio to explain cross-sectional differences in firm value.<sup>8</sup>

The remainder of the paper is structured as follows: Section 2 discusses the economic hypotheses. Section 3 describes the data set and introduces definitions of variables. Section 4 presents results of benchmark panel regressions. Section 5 studies how these results change when we decompose volatility into a systematic and an idiosyncratic part. Section 6 analyzes the relation of R&D expenses and realized idiosyncratic volatility with contemporaneous stock returns. To address concerns about missing factors in the Fama-French model, Section 7 decomposes the idiosyncratic firm-level volatility of the Fama-French model into a part that is explained by a principal-component analysis and a residual that is still unexplained. We redo our main analyses using these residuals and confirm that our main findings still stand. Section 8 concludes.

---

<sup>8</sup>For further literature that studies the effect of real investment decisions on asset prices and returns see, e.g., Chan, Lakonishok, and Sougiannis (2001), Desai, Wright, Chuang, and Charoenwong (2003), Aguerrevere (2009), Carlson, Fisher, and Giammarino (2010), and Hackbarth and Johnson (2012).

## 2 Economic Hypotheses

Following Berk, Green, and Naik (1999), we posit that firm value is the sum of the present value of cash flows of assets in place and the value of a firm's growth options (call options). Tobin's Q is then defined as the ratio of firm value and book value.

Our first analysis consists in panel regressions of Tobin's Q on the variables that affect the value of the growth options, controlling for other factors that may have an impact on firm valuation. Our regressions involve long-term interest rates that affect discount rates and call option prices, but in different directions. Present values decrease in discount rates, whereas call option prices increase. Additionally, interest rates also vary with the business cycle. Therefore, the overall effect of interest rates on firm value is not obvious.

Motivated by the findings of Ang, Hodrick, Xing, and Zhang (2006) that aggregate volatility risk is priced, we add the volatility of the S&P 500 index to our regressions. Since market volatility is a measure of global risk, we expect Tobin's Q to be negatively related to market volatility.

On the contrary, individual stock volatility is directly related to the volatility of firm value. On the one hand, discount rates increase in systematic volatility, which in turn has a negative effect on firm value. On the other hand, growth options increase in both systematic and idiosyncratic volatility. We thus expect that for firms with a lot of growth options (e.g. R&D firms) firm value and firm-level volatility are positively related. The effect should be particularly strong for idiosyncratic volatility, which should not affect discount rates. Furthermore, firm-level skewness and Tobin's Q should be positively related, since a larger skewness leads to larger values of growth options.

Roll, Schwartz, and Subrahmanyam (2009) proxy for investment opportunities by including capital expenditures, but disregard R&D expenses. On the other hand, Connolly and Hirschey (2005) and Czarnitzki, Hall, and Oriani (2006) find that R&D expenses affect firm values positively. We thus include both variables. Whereas R&D expenses create growth options, capital expenditures are a direct measure of investment opportunities actually undertaken, i.e. exercised growth options. Therefore, we expect Tobin's Q to increase with R&D expenses. This



is also inline with Kogan and Papanikolaou (2012) who theoretically show that Tobin's Q is positively related to growth opportunities. The effect of capital expenditures is however not obvious, since capital expenditures destroy growth options, but can also create new ones.<sup>9</sup>

Following Roll, Schwartz, and Subrahmanyam (2009), among others, our regressions involve several control variables. We use turnover of a firm's shares as a liquidity proxy. Since investors are willing to pay a premium for liquid assets, the market value of a firm and thus Tobin's Q should increase in stock turnover. Besides, we include market capitalization as a size measure and expect Tobin's Q to increase with market capitalization due to the size effect. We also control for leverage. Depending on whether leverage is a proxy for default risk or whether debt might make managers more careful about investments (see Jensen and Meckling (1976)) the effect can be positive or negative. Besides, return on assets is used a profitability measure. The relation to Tobin's Q could be positive since profitable firms might have more growth options. On the other hand, the relation could be negative if mature firms with few growth options are more profitable. Finally, we include a dividend dummy that proxies for capital constraints. Firms that pay dividends may have more free cash flow, which may potentially be used to overinvest in marginal projects. This would lead to a negative relation to Tobin's Q. This could also be due to a tax effect, since taxes on dividends are higher than on capital gains.

### 3 Data

Since we are interested in analyzing the effect of volatility on Tobin's Q and stock returns, we distinguish firms with more growth options (R&D firms) from firms with less growth options (non-R&D firms). Therefore, our sample period starts in 1975 (ranging until 2015). Before 1975 firms were allowed, but not required to capitalize R&D expenses. Since 1975 there are stricter rules and it is required that all R&D expenses are expensed in the period incurred (with a few exceptions). Consequently, the year 1975 is the natural starting point of the sample. Notice that

---

<sup>9</sup>Notice that capital expenditure increase not only the physical capital, but also the option to invest further and can thus create new growth options. See, e.g., Carlson, Fisher, and Giammarino (2010).

it is not straightforward to distinguish between R&D and non-R&D firms.<sup>10</sup> For this reason, we are going to split the observations into firm-year observations in which R&D expenses are reported and into firm-year observations where this is not the case (missing or zero). We have also tried alternative ways to identify R&D vs. non-R&D firms (e.g. more than 90% firm-year observations in the past with R&D) and the results were very similar to the results reported below.

The data comes from several sources. Firstly, we use two macro variables, the 10y Treasury yield and the historical volatility of the S&P 500 index. The Treasury yield comes from the database of the FED St. Louis. The S&P 500 index data is reported by CRSP. At the end of every month of the sample period we calculate the historical index volatility by computing the daily standard deviation of the returns over the year up to that month.<sup>11</sup> The volatility is then annualized by multiplying by  $\sqrt{250}$ . The average treasury yield is about 6.6% and the average historical volatility of the S&P 500 index is 15.9%.<sup>12</sup>

The firm data comes from Compustat and CRSP. The sample is selected by deleting any firm-year observations with missing accounting data. Financial firms and utilities are excluded from the sample as well. Our benchmark results presented in Section 4 are based on 156,938 observations coming from 16,732 firms over 41 years. There are 74,544 observations including R&D expenses and 82,394 observations not including R&D expenses. Figure 1 depicts the percentage of observations with R&D expenses per Fama-French industry, both for the whole sample and after cleaning the data (referred to as 'benchmark'). It can be seen that the frequencies are similar in the 'benchmark' sample and in the whole sample. The industries in which close to 90% or more of the observations involve R&D expenses are Measuring and Control Equipment, Pharmaceutical Products, Computers, Medical Equipment, and Electronic Equipment.

---

<sup>10</sup>For instance, there are firms that initially do not report R&D expenses and then start to do so or vice versa. In particular, one has to be careful not to use any forward-looking criteria.

<sup>11</sup>We use the returns excluding distributions, but our results do not change if we use returns including distributions.

<sup>12</sup>VIX data is not available for the whole time period and thus we decided to use historical volatility.

[INSERT FIGURE 1 ABOUT HERE]

The relevant data includes the following items derived from Compustat: Tobin's Q is defined as the ratio between (i) the sum of book value of assets plus the difference between market value and book value of equity minus deferred taxes (Compustat:  $at + prcc\_f \times csho - ceq - txdb$ ), where we set deferred taxes equal to zero if they are missing,<sup>13</sup> and (ii) book value of assets (Compustat:  $at$ ). Invest denotes the investments of a firm defined as capital expenditures (Compustat:  $capx$ ) over sales (Compustat:  $sale$ ).<sup>14</sup> Size is defined as the logarithm of real market capitalization that is obtained by dividing nominal market capitalization (Compustat:  $prcc\_f \times csho$ ) by the Consumer Price Index from the Bureau of Labor Statistics. The return on assets, ROA, is given as the ratio between income before extraordinary items plus total interest and related expense (Compustat:  $ib$  plus  $xint$ ) and lagged book value of total assets (Compustat:  $lag$  of  $at$ ). Leverage is long-term debt over total assets (Compustat:  $dltt/at$ ). RDexp is defined as the ratio between R&D expenses (Compustat:  $xrd$ ) and sales. Missing R&D expenses are set to zero. A dummy variable for whether the firm pays a dividend is included in most regressions as well.

We also calculate the annualized historical volatility and skewness of a firm's stock returns using the CRSP daily stock file for every firm fiscal year (excluding distributions).<sup>15</sup> Firm-level volatility and skewness are denoted by  $Vol\_firm$  and  $Skew\_firm$ .<sup>16</sup> The turnover of a firm's share is given as the average daily turnover of shares divided by the number of outstanding shares.

---

<sup>13</sup>Our results are robust to this assumption.

<sup>14</sup>There are few observations with negative sales where we set sales to missing. Notice that our regression results are very similar if we divide by lagged sales. In order to make our results easier comparable to Roll, Schwartz, and Subrahmanyam (2009), we divide by sales.

<sup>15</sup>We have calculated volatility and skewness using all available return observations and setting missing return observations to zero. As a robustness check, however, we have tried several alternatives to deal with missing observations. We have calculated the firm-level volatilities by disregarding days where return is missing. Then we have only used days where trading volume is positive and returns are not missing. Besides, we have also used daily returns including distributions. Our regression results only marginally change, though.

<sup>16</sup>In contrast to the firm-level volatility that is annualized the firm-level skewness is not annualized. This is because the annualized skewness equals the daily skewness multiplied by  $250 \cdot \sqrt{250}$ , which leads to inconveniently large number.

We use the information about volume as reported in CRSP with the following exceptions. If volume and return are missing, then volume is replace by zero. The same is true if volume is missing and return is zero. If volume is missing, but return is non-zero, then we keep the missing value of volume. However, our results hardly change if we disregard missing volume information altogether.

[INSERT TABLE 1 ABOUT HERE]

Table 1 reports summary statistics of the firm specific variables. It also provides these statistics for the sub-samples of firm-year observations involving R&D expenses and not-involving R&D expenses. It can be seen that R&D observations have higher Tobin's Q, higher firm-specific volatility, lower skewness and are related to more liquidity as measured by turnover. Furthermore, the relative capital expenditures are lower, size is bigger, and profitability and leverage are smaller. Besides, the probability of a dividend payment is smaller.

[INSERT TABLE 2 ABOUT HERE]

Table 2 summarizes the correlations between the variables involved in our analysis. First, note that – except for few correlations close to zero – all signs of the correlations are the same for the full sample and the two sub-samples. Furthermore, the S&P volatility is negatively related indicating that it proxies for global risk. On the contrary, firm-level volatility and skewness are positively related to Tobin's Q, which suggests that growth options are indeed relevant for pricing. Both capital expenditures and R&D expenses are positively related to Tobin's Q, where the latter relation is reported in Panel B of Table 2. The positive relation of capital expenditures is even true for R&D observations, which points in the direction that the effect of creating new growth options dominates the effect of destroying existing ones. As we will see later on, this relation reverses in multi-dimensional regressions where we control for both R&D expenses and capital expenditures at the same time. The control variables size and turnover have the expected positive relation to Tobin's Q. Profitability as measured by ROA is negatively correlated suggesting that mature firm's with less growth options are more profitable. Leverage is also negatively related indicating that leverage proxies for default risk.

This is also true for the dividend dummy and the effect is more pronounced for R&D firms, i.e. for those firms dividend payments seem to particularly damaging.<sup>17</sup> Finally, Tobin's Q is negatively related to the Treasury yield, so its role as discount rate seems to dominate in the data.<sup>18</sup> To summarize, the relations between Tobin's Q and the volatility or skewness variables have the expected signs. Besides, the controls have the same signs as in Roll, Schwartz, and Subrahmanyam (2009). While these are one-dimensional results, in the following sections we will run panel regressions controlling simultaneously for several factors and distinguishing more clearly between the effects that are pricing relevant for R&D and non-R&D observations.

## 4 Benchmark Results

In this section we examine the relation of Tobin's Q to the joint explanatory variables discussed above. We run several panel regressions that use all the information contained in the cross-section of firms and in the time-series. The residuals of the cross-sectional regressions are likely to be serially correlated. Furthermore, there might be cross-sectional dependence as well. To overcome these potential problems, we correct our  $t$ -statistics using the approach outlined in Driscoll and Kraay (1998). They assume an error structure that is heteroscedastic, autocorrelated up to some lag, and possibly correlated between the units.<sup>19</sup> The resulting standard errors are heteroscedasticity consistent as well as robust to very general forms of cross-sectional and temporal dependence. As a robustness check we have also corrected the standard errors by double clustering as discussed in Petersen (2009). The benchmark results are however almost identical.<sup>20</sup>

[INSERT TABLE 3 ABOUT HERE]

---

<sup>17</sup>This result is in line with Tobin and Brainard (1977) who suggest that firms with high market-to-book values (R&D firms) should undertake investments.

<sup>18</sup>This will however change if we control for several variables simultaneously in panel regressions.

<sup>19</sup>In our regressions, the maximum lag is two years.

<sup>20</sup>The corresponding regression results are available upon request.

Table 3 reports our benchmark results. In regressions (1)-(3) we include a dummy variable if R&D expenses are positive, whereas regressions (4)-(6) involve R&D expenses that are set to zero if they are missing. In regressions (2), (3), (5), and (6) we include interaction variables that are the product of an R&D dummy and firm-level volatility or firm-level skewness. For instance, `RD_vol_firm` equals firm-level volatility if the particular observation also involves R&D expenses. Otherwise it is set zero. There are several interesting findings: First, index volatility is significantly negative in all regressions, i.e. more global risk leads to lower firm values. This result is consistent with the findings of Ang, Hodrick, Xing, and Zhang (2006) that aggregate volatility risk is inversely related to stock prices. However, the situation is very different for firm-level volatility that is significantly positive in regressions (1)-(6). Notice that the significance decreases and the point estimate goes down by almost 50% if we include the interaction variable `RD_vol_firm`. Instead, this interaction variable turns out to be highly significant with larger coefficients than firm volatility in regressions (1) and (4). This shows that firm-level volatility matters significantly more for R&D observations. The result supports our hypothesis that firm values are positively related to firm-level volatility due to growth options. Besides, we document that firm-level skewness (`Skew_firm`) is highly positively significant in all regressions. If we include the interaction variable `RD_skew_firm`, the coefficient of `Skew_firm` goes down by 50%. The loading of `RD_skew_firm` is more than twice as high as the loading for non-R&D observations (in regressions (3) and (6) measured by `Skew_firm`).<sup>21</sup>

We also find that capital expenditures (`Invest`) are only significant if we do not include the actual size of R&D expenses, which are very significant in the last three regressions. Therefore, creating growth options via R&D expenses is more pricing relevant than any of the effects that could be attributed to capital expenditures (see Section 2).<sup>22</sup> Notice also that, although the R&D dummy becomes insignificant in regressions (2) and (3) where we include interaction variables with this dummy, the significance of the amount of the R&D expenses is not affected

---

<sup>21</sup>Chen and Petkova (2012) also suggest that firms with high skewness are likely to have growth options/R&D expenditures. However, they examine the relation between R&D expenses and stock returns.

<sup>22</sup>McConnell and Muscarella (1985) find evidence that the announcement of capital expenditures positively affects firm values, but they do not control for R&D expenses.

if we include the interaction variables in regressions (5) and (6). This documents the relative importance of R&D expenses in this context.

Furthermore, the Treasury yield is significant and positive. Since this result holds no matter how we control for effects of R&D expenses, the Treasury yield seems to proxy for business cycles.<sup>23</sup> The other controls have the expected signs and go in the same directions as in Roll, Schwartz, and Subrahmanyam (2009):<sup>24</sup> Tobin's Q increases with size and decreases with ROA and leverage. This suggests that there is a size effect in the cross-section. Besides, since ROA is negatively significant, mature firm's with less growth options seem to be more profitable. The loading of leverage is negative. Therefore, the interpretation of leverage as a measure of distance to insolvency appears to be more important than its disciplinary effect as discussed by Jensen and Meckling (1976). Finally, the dividend dummy is highly negatively significant, which suggests that firms that pay dividends waste money on non-profitable projects due to non-binding financial constraints and/or are mature firms with less growth options.

## 5 Systematic vs. Idiosyncratic Volatility

In the previous section, we have documented that Tobin's Q of an R&D observation has a significantly positive loading on firm-level volatility and that the corresponding loading for non-R&D observation is significantly smaller. In this section, we explore whether this positive dependence can be attributed to systematic or idiosyncratic firm-level volatility. We also study whether there is a difference between R&D and non-R&D observations. The main reason for decomposing firm-level volatility is that for the valuation of (growth) options both systematic and idiosyncratic volatility matter, whereas idiosyncratic volatility is not priced according to the CAPM or APT. Therefore, the idiosyncratic part of firm-level volatility might be a cleaner measure than firm-level volatility, since the idiosyncratic part only influences the values of growth options and not discount rates. Furthermore, if R&D firms have more growth options

---

<sup>23</sup>Notice that this is still true if we use the real Treasury yield (= Treasury yield minus inflation).

<sup>24</sup>An exception is turnover. Here the comparison is more complicated since Roll, Schwartz, and Subrahmanyam (2009) include two liquidity variables, stock turnover and option trading activity.

than non-R&D firms, they should have a higher and positive loading on idiosyncratic volatility. In the following, we briefly discuss how firm-level volatility can be decomposed into a systematic and an idiosyncratic part. First, notice that this decomposition is model-dependent. We thus implement two models: a Fama-French three-factor model and a CAPM-style one factor model. In the three-factor model, we run for every firm fiscal year the following regression on daily data

$$r_t^i - r_t^f = \alpha^i + \beta^{M,i}(r^M - r^f)_t + \beta^{SMB,i}SMB_t + \beta^{HML,i}HML_t + \varepsilon_t^i, \quad (5.1)$$

where  $r_t^i$  is the daily return of firm  $i$ ,  $r_t^f$  is the Fama riskfree rate, and  $(r^M - r^f)_t$ ,  $SMB_t$ , and  $HML_t$  denote the returns on the three Fama-French factor portfolios (market, size, book). Following Ang, Hodrick, Xing, and Zhang (2006), among others, the idiosyncratic volatility (ivol) of year  $y$  is then defined as

$$\sigma_y^{unsys} = \sqrt{\text{Var}(\varepsilon_t^i)}, \quad (5.2)$$

where  $t$  is in year  $y$ . Analogously, the systematic volatility of year  $y$  is given by

$$\sigma_y^{sys} = \sqrt{\text{Var}(r_t^i - r_t^f - \varepsilon_t^i)}.$$

Notice that  $\sigma_y^2 = (\sigma_y^{sys})^2 + (\sigma_y^{unsys})^2$ , where  $\sigma_y$  is the volatility of firm  $i$  in year  $y$ . The one-factor model includes the market factor  $r^M - r^f$  only. Since our regressions already control for size and leverage that are closely related to the size and book factor of the Fama-French model, considering a one-factor might be a reasonable alternative.

[INSERT TABLE 4 ABOUT HERE]

Table 4 reports the regression results when we decompose firm-level volatility (Vol\_firm) into a systematic part (Vol\_ff\_sys or Vol\_capm\_sys) and an unsystematic part (Vol\_ff\_unsys or Vol\_capm\_unsys) using the Fama-French model and the CAPM. The regressions labeled (2: FF) and (2: CAPM) should be compared with regression (2) repeated from Table 3, which involves an R&D dummy. Accordingly, regressions labeled (5: FF) and (5: CAPM) should be compared with regression (5) repeated from Table 3, which involves the actual amount of R&D expenses (set to zero if missing) instead of an R&D dummy.



It turns out that all variables involving idiosyncratic volatility are highly significant with the expected (positive) sign. These results clearly indicate that volatility predominately matters through its idiosyncratic parts. Since the interaction variables `RD_vol_ff_unsys` and `RD_vol_capm_unsys` are strongly significant, the effect is the strongest for R&D firms that have a lot of growth options. Notice that the all point estimates of the systematic part of firm volatility (`Vol_ff_sys` and `Vol_capm_sys`) are negative, which is not unreasonable since this part shall involves risk that affects discount rates.

Finally, notice that our previous results concerning the relevance of capital expenditures and R&D expenses are still intact: The size of R&D expenses is highly relevant and knocks out the significance of capital expenditures when we include the actual amount in the regressions. This can be seen in regressions (5), (5: FF), and (5: CAPM).

## 6 Stock Returns

In the previous sections, we have documented that firm value increases with idiosyncratic firm-level volatility where the effect is the strongest for R&D observations. In this section, we study the relation between (idiosyncratic) firm-level volatility and stock returns for R&D and non-R&D observations. Following a similar line of argument as before, the (contemporaneous) stock return of a firm with a lot of growth options should be positively related to idiosyncratic volatility. This is because a larger volatility increases the values of the growth options, which should materialize in positive stock returns. As already discussed in the introduction, Ang, Hodrick, Xing, and Zhang (2006) document the so-called *ivol* anomaly showing that value-weighted high *ivol* portfolios have significantly lower expected returns, i.e. lower returns in *future* periods.<sup>25</sup> Since we focus on growth options where from an option pricing point of view the relation between volatility and value or returns is contemporaneous,<sup>26</sup> we consider contemporaneous realized stock returns. Therefore, we relate volatility to returns of the same

---

<sup>25</sup>See Fu (2009) for measurement issues in this context.

<sup>26</sup>See, e.g., Brennan and Schwartz (1985). In the model of Kogan and Papanikolaou (2012) there is also a relation between expected returns and growth opportunities.

period for which (idiosyncratic) volatility is calculated. This is in line with the previous panel regressions where we relate firm values to contemporaneous firm-level volatilities. We focus on firms in our sample that have a fiscal year ending in December and match monthly stock returns from CRSP to our data set. The Fama-French factors as well as the momentum factor stem from Kenneth French's website.

We expect that firms with more growth options should have higher returns than firms with less growth options and thus the contemporaneous relation of idiosyncratic volatility and abnormal returns should be higher for firms with more growth options, i.e. R&D firms. In the following, we first perform single sorts on ivol and double sorts on ivol and R&D expenses to study the properties of the resulting portfolio alphas. Then we run panel regressions of firm-level alphas on the same explanatory variables that we used in Sections 4 and 5 on Tobin's Q.

[INSERT TABLE 5 ABOUT HERE]

We start with the sorts: The firms are grouped into equal-weighted portfolios since this approach is similar to the weighting scheme of panel regressions. Each year we form equal-weighted portfolios on the basis of the size of idiosyncratic volatility computed from a Fama-French model. The ivol portfolios are arranged from low ivol to high ivol. Table 5 reports the alphas from regressions of the monthly excess portfolio returns on the three Fama-French factors for the fiscal year whose data is used to calculate the ivol on which the portfolios are based. This is performed for the whole sample and two sub-samples, R&D and non-R&D firm observations. We also report the results for a four-factor model with momentum.<sup>27</sup> Table 5 provides evidence that there is no significant contemporaneous ivol-return relation for the whole sample if we use the four-factor model since the alpha of the difference portfolio is not significant. For the three factor model, there is a significant effect.<sup>28</sup> In both cases, the alphas appear to be ordered.

To put these findings into perspective, we now consider sub-portfolios. For R&D observations, the ordering of the alphas goes away. If anything, the alphas show a hump-shaped pattern. For the four-factor model all alphas are positive and the point estimate of the difference portfolio

---

<sup>27</sup>See Carhart (1997).

<sup>28</sup>Bali and Cakici (2008) show that this is also true for expected returns and equal-weighted portfolios.

is close to zero. On the other hand, for non-R&D observations we find the opposite: Alphas are ordered and the alphas of the difference portfolio are significantly negative. Panel C of Table 5 also reports the robust Newey-West  $t$ -statistics of the diff-in-diff portfolio (difference portfolio of the difference portfolios) that is -1.76 for the three-factor model and -2.16 for the four-factor model. These results indicate that there is significantly negative contemporaneous ivol-return relation for non-R&D observations. Notice that these findings are driven by the two highest ivol deciles of the non-R&D observations. To summarize, our results support our above prediction that firms with growth options should have higher contemporaneous returns than firms with less growth options and that the contemporaneous ivol-return relation should be higher for firms with more growth options.

Table 5 also reports sample averages of several variables for each portfolio. Here in every month we calculate the equal-weighted average of the corresponding variable and then calculate the equal-weighted average across months.<sup>29</sup> All variables are defined as in Section 3. It can be seen that sorting on ivol leads to several interesting patterns. Size is decreasing with idiosyncratic volatility both for R&D and non-R&D observations, which is in line with Bali and Cakici (2008) who consider the whole sample. Besides, R&D firms are bigger than non-R&D firms where the difference is the largest for low ivol and slightly U-shaped. Second, the sort on ivol also leads to a monotonous relation for firm-level volatility in both panels.

For R&D observations the ivol portfolios are also monotonously ordered with respect to R&D expenses and high (idiosyncratic) volatilities go together with high R&D expenses.<sup>30</sup> Notice however that R&D observations do not systematically have higher idiosyncratic volatility than non-R&D observations. In particular, the average ivol in the highest ivol portfolio is larger for non-R&D observations.

Tobin's Q shows a very similar pattern as R&D expenses: The mean values of all R&D portfolios

---

<sup>29</sup>Accounting data is only annual, i.e. does not change within a year. Therefore, for these variables one can just calculate the equal-weighted averages over December averages. But also for the other variables the differences are negligible.

<sup>30</sup>This is in line with the finding of Chen and Petkova (2012) who do not report results for non-R&D observations.

are larger than of the non-R&D portfolios. Besides, they are monotonously increasing for the R&D observations (except for the second portfolio), whereas they are almost flat around 1.6 for non-R&D observations. Therefore, the portfolio with the highest average ivol (non-R&D portfolio 10 in Panel C) has a smaller average Tobin's Q than 8 out of 10 R&D portfolios. In particular, its average ivol is much larger than the average ivol of the first R&D portfolio which has a Tobin's Q of similar size. Notice however that for the whole sample Tobin's Q is (almost) monotonously increasing with ivol, which is also reported by Chen and Petkova (2012).

Furthermore, capital expenditures are systematically for non-R&D observations. Turnover increases in ivol and R&D firm observations have higher turnovers than non-R&D observations. Skewness is smaller for R&D firm observations and has the tendency to increase with ivol for both sub-samples. Besides, R&D firms have less leverage and for non-R&D firms leverage is increasing in ivol, whereas there is no clear pattern for R&D firms. Finally, ROA is decreasing in ivol for both sub-portfolios and R&D firms have smaller ROA than non-R&D firms. This difference substantially widens from low ivol to high ivol portfolios.

To summarize, a single-sort on ivol leads to several systematic patterns for other firm-specific variables<sup>31</sup> and these patterns have different forms for R&D and non-R&D firm observations. Furthermore, in equal-weighted portfolios there is only a significantly negative contemporaneous ivol-return relation (relative to a four factor model) when we focus on non-R&D observations. Here the significantly negative alphas of the two highest ivol portfolios in Panel C of Table 5 drive the results. Focusing on the portfolio with the highest ivol and most negative alpha in Panel C, this portfolio consists of firms without contemporaneous R&D expenses that at the same time are on average the smallest, have the highest leverage and the highest idiosyncratic volatility of all portfolios (non-R&D as well R&D).

[INSERT TABLE 6 ABOUT HERE]

---

<sup>31</sup>These findings are related to the results of Kogan and Papanikolaou (2012). They show that that firm characteristics such as Tobin's Q, investment rates, earnings-to-price ratio, and ivol are correlated with firms' exposures to the same common risk factor, which generates a significant share of variation in realized portfolio returns and captures cross-sectional differences in their risk premia.

Since there is a strong relation between firm-level volatility and R&D expenses, we now double sort firms, first with respect to idiosyncratic volatility then with respect to R&D expenses. This allows us to control for (idiosyncratic) volatility and to study the impact of R&D expenses on contemporaneous stock returns. We expect that for a given level of idiosyncratic volatility returns increase in R&D expenses since firms with high R&D expenses presumably have more growth options. Table 6 reports portfolio alphas when we sort observations into 60 portfolios:<sup>32</sup> Every ivol portfolio is sorted into six sub-portfolios (zero R&D and five R&D portfolios). Since approximately half of our observations are non-R&D observations, the five R&D portfolios together are approximately as big as the zero R&D portfolio. It can be seen that our intuition is confirmed: In all cases, high R&D observations have higher alphas than low R&D or zero R&D observations. Additionally, in 17 out of 20 cases, the differences are even individually significant.

Furthermore, note that the individual alphas of all high R&D portfolios are positive. This is in sharp contrast to the whole sample and zero or low R&D portfolios where the portfolio alphas are positive (negative) for low (high) ivol portfolios and with few outliers monotonously decreasing over ivol portfolios. These findings provide additional evidence that R&D firms have larger positive alphas.

[INSERT TABLE 7 ABOUT HERE]

Although our double sorts control for idiosyncratic firm-level volatility, there might be other variables that systematically affect alphas. To control for additional variables, we now extract annual averages of firm-level alphas. More precisely, we calculate the monthly alphas via Fama-French regressions and then compute annual averages by averaging over these monthly alphas for a particular year in the sample. We use all explanatory variables that are included in the regressions of Table 4. and focus on firms in our sample that have a fiscal year ending in December. Table 7 reports the corresponding panel regressions. It can be seen that the loadings of all variables involving firm-level volatility have similar signs and significance levels as in the

---

<sup>32</sup>We use a Fama-French three-factor model. The results involving a momentum factor are similar and available upon request.

previous panel regressions. In particular, the loadings of variables involving *ivol* are positive and very significant. These findings support our previous results that idiosyncratic volatility matters the most for firms with a lot of growth options.

## 7 Decomposition of Idiosyncratic Volatility

The issue with idiosyncratic volatility as defined in Section 5 is that from a theoretical point of view there can be a systematic relation between returns and idiosyncratic volatility if there is an omitted variable in the Fama-French model. To address this concern, we take the residuals of the Fama-French regression (5.1) as starting point. Then for every year we perform a principal-component analysis (PCA) on these residuals and extract the first two factors.<sup>33</sup> This allows us to calculate idiosyncratic volatilities *after subtracting these factors*. Using these adjusted *ivol*s, we then redo our main analysis, i.e. Tables 4 and 7. As in the latter table, we concentrate on firms with fiscal year ending in December. Since a PCA is sensitive to missing values and singularities, we only consider firm year observations where there are no missings for the stock return observations and at most 75 return observations per year are zero.<sup>34</sup> As we are going to report below, the bottom line of this section is that our main results stand also for the more sophisticated *ivol* definition.

More precisely, performing a PCA allows us to decompose the unexplained variance  $(\sigma_y^{unsys})^2$  of the Fama-French model into a component  $(\sigma_y^{fit})^2$  that is explained by the factors of the PCA

---

<sup>33</sup>This is similar, but not the same as in Herskovic, Kelly, Lustig, and Nieuwerburgh (2016). They perform a PCA on excess returns, whereas we perform a PCA on the residuals coming from Fama-French regressions. This is the reason why we use two factors only, which amounts to five factors if the Fama-French factors are counted as well.

<sup>34</sup>The original sample has 156,938 observations where about 91,767 are for firm years ending in December. Disregarding observations with sparse return observations, our sample consists of about 67,300. To make sure that this sample is still similar to the original sample, we have rerun the regressions of Tables 4 and 7 with the *ivol* definition (5.2). As can be seen below, the results of the relevant variables essentially do not change.

and a component  $(\sigma_y^{res})^2$  that is still unexplained.<sup>35</sup> Formally, we obtain

$$(\sigma_y^{unsys})^2 = (\sigma_y^{fit})^2 + (\sigma_y^{res})^2.$$

Therefore, we define the systematic part of the total variance (after performing the PCA) as the sum of the components that are explained by the Fama-French factors and the first ten components of the PCA,

$$(\sigma_y^{sys,pca})^2 = (\sigma_y^{sys})^2 + (\sigma_y^{fit})^2,$$

and the unsystematic part of the total variance as the remaining residuals,

$$(\sigma_y^{unsys,pca})^2 = (\sigma_y^{res})^2. \tag{7.3}$$

The annualized systematic and unsystematic volatilities are  $\sigma_y^{sys,pca}\sqrt{250}$  and  $\sigma_y^{unsys,pca}\sqrt{250}$ .

[INSERT TABLE 8 AND 9 ABOUT HERE]

Table 8 reports the correlations of these volatility components with our explanatory variables. Notice that the unsystematic part `Vol_ff_pca_unsys` is highly correlated with the total firm volatility `Vol_firm`, which is however also true for the `ivol` definitions `Vol_ff_unsys` and `Vol_ff_capm` that we have applied previously. This means that unsystematic volatility is high if total volatility is high as well.

Table 9 reports the regression results for the new `ivol` definition and should be compared with Table 4. First we compare the regressions labeled (2: FF) of both tables. In both cases, we apply the original `ivol` definition (5.2) and run the same regressions, but in Table 9 on the smaller sample (fiscal year December, no sparse returns) that we use to perform the PCA. Apparently, the signs of all explanatory variables are the same, although some controls (Treasury yield, turnover, and leverage) are not significant any more. Additionally, the important variables related to firm-level volatility are now all significant with the expected signs. If we regress

---

<sup>35</sup>It turns out that on average the first component explains only 2% of the variation of the residuals of the Fama-French regressions. The first ten components explain about 11.6%. This indicates that there is not much systematic variation left. Only during the crisis years 2007-2009 these numbers are higher. For instance, in the year 2008, the first component explains about 6% and the first ten components about 21%.

on the actual R&D expenses (instead of an R&D dummy), then only the variables related to *ivol* are significant. This can be seen in columns (5: FF). The results become clearer if we use the new *ivol* definition as reported in column (2: FF&PCA) and (5: FF&PCA). Then systematic volatility has a significantly negative effect, whereas both variables related to *ivol* have significantly positive effects.

[INSERT TABLE 10 ABOUT HERE]

Finally, we reconsider Table 7. The columns (a2: FF) and (a5: FF) report the results if we rerun regressions (a2: FF) and (a5: FF) of Table 7 on the smaller sample. Apparently, this sample delivers similar results. Only the interaction variable *RD\_vol\_ff\_unsys* is not significant any more in regression (a5: FF), although the sign stays the same. More importantly, regressions (a2: FF&PCA) and (a5: FF&PCA), which involve the volatility variables derived from the PCA, yield almost the same results.

## 8 Conclusion

This paper studies to what extent firm value is related to growth options. We find strong evidence that Tobin's Q is significantly increasing in firm-level volatility. More importantly, by splitting the sample into R&D and non-R&D observations we show that this relation is to a large extent driven by the idiosyncratic part of firm-level volatility and is concentrated within R&D firm observations. These results complement earlier findings that idiosyncratic volatility is significantly priced in the cross-section of stock returns. On the other hand, we document that Tobin's Q is negatively related to index-level volatility as measured by the volatility of the S&P 500, which proxies for global risk.

Furthermore, we find that firm-level skewness is positively related to Tobin's Q which is also consistent with real options theory. Hence, our results provide strong empirical evidence that firm value is significantly affected by growth options. We also document that the actual amount of R&D expenses is more important for firm valuation than capital expenditures, which are not



significant in regressions where both variables are included. This indicates that R&D expenses are a better proxy for the creation of growth options.

Besides, we study the relation of stock returns to realized contemporaneous idiosyncratic volatility and R&D expenses. In this case, there is a significantly negative relation for non-R&D observations, whereas for R&D observations the portfolio alphas are all positive if we use a four-factor model with momentum. We also document that the sub-samples of R&D and non-R&D observations are very distinct with respect to the sizes and patterns of R&D expenses and Tobin's Q. On the contrary, the average ivols of the portfolios are similar, which is in line with our previous result that the pricing effect of ivol matters the most if we interact ivol with an R&D dummy.

Double sorts controlling for ivol show that for high R&D observations all sub-portfolio alphas are positive and that all alphas of difference portfolios between high and low or zero R&D observations are positive as well. Running panel regressions of firm-level alphas on firm-level volatility as well as its idiosyncratic and systematic parts shows that volatility matters, but predominately through its idiosyncratic part. Besides, we again confirm that this effect is amplified via R&D expenses.

## References

- Aguerrevere, F. L., 2009, Real options, product market competition, and asset returns, *Journal of Finance* 64, 957–983.
- Ang, A., R. J. Hodrick, Y. Xing, and X. Zhang, 2006, The cross-section of volatility and expected returns, *Journal of Finance* 61, 259–299.
- Ang, A., R. J. Hodrick, Y. Xing, and X. Zhang, 2009, High idiosyncratic volatility and low returns: International and further U.S. evidence, *Journal of Financial Economics* 91, 1–23.

- Bali, T. G., and N. Cakici, 2008, Idiosyncratic volatility and the cross section of expected returns, *Journal of Financial and Quantitative Analysis* 43, 29–58.
- Bekaert, G., R. J. Hodrick, and X. Zhang, 2013, Aggregate idiosyncratic volatility, *Journal of Financial and Quantitative Analysis* forthcoming.
- Belo, F., C. Xue, and L. Zhang, 2010, Cross-sectional Tobin’s Q, *Working Paper*, NBER.
- Berk, J. B., R. C. Green, and V. Naik, 1999, Optimal investment, growth options, and security returns, *Journal of Finance* 54, 1553–1607.
- Brennan, M. J., and E. S. Schwartz, 1985, Evaluating natural resource investment, *Journal of Business* 58, 135–157.
- Cao, C., T. Simin, and J. Zhao, 2008, Can growth options explain the trend in idiosyncratic risk?, *Review of Financial Studies* 21, 2599–2633.
- Carhart, M. M., 1997, On persistence in mutual fund performance, *Journal of Finance* 52, 57–82.
- Carlson, M., A. Fisher, and R. Giammarino, 2010, SEO risk dynamics, *Review of Financial Studies* 23, 4026–4077.
- Chan, L. K. C., J. Lakonishok, and T. Sougiannis, 2001, The stock market valuation of research and development expenditures, *Journal of Finance* 56, 2431–2456.
- Chen, Z., and R. Petkova, 2012, Does idiosyncratic volatility proxy for risk exposure?, *Review of Financial Studies* 25, 2745–2787.
- Cochrane, J. H., 2011, Presidential address: Discount rates, *Journal of Finance* 66, 1047–1108.
- Connolly, R. A., and M. Hirschey, 2005, Firm size and the effect of R&D on Tobin’s q, *R&D Management* 35, 217–223.

- Czarnitzki, D., B. H. Hall, and R. Oriani, 2006, Market valuation of US and European intellectual property, *Management Of Intellectual Property. Cheltenham, UK: Edward Elgar* pp. 111–131.
- Desai, A., P. Wright, K. H. Chuang, and C. Charoenwong, 2003, Impact of changes in strategic investments on shareholder returns: The role of growth opportunities, *Journal of Applied Business Research* 19, 41–55.
- Driscoll, J. C., and A. C. Kraay, 1998, Consistent covariance matrix estimation with spatially dependent panel data, *Review of Economics and Statistics* 80, 549–560.
- Duffee, G. R., 1995, Stock returns and volatility a firm-level analysis, *Journal of Financial Economics* 37, 399–420.
- Fink, J. D., K. E. Fink, and H. He, 2012, Expected idiosyncratic volatility measures and expected returns, *Financial Management* 41, 519–553.
- Fu, F., 2009, Idiosyncratic risk and the cross-section of expected stock returns, *Journal of Financial Economics* 91, 24–37.
- Grullon, G., E. Lyandres, and A. Zhdanov, 2012, Real options, volatility, and stock returns, *Journal of Finance* 67, 1499–1537.
- Hackbarth, D., and T. C. Johnson, 2012, Real options and risk dynamics, *Working Paper*.
- Herskovic, B., B. Kelly, H. Lustig, and S. Van Nieuwerburgh, 2016, The Common Factor in Idiosyncratic Volatility: Quantitative Asset Pricing Implications, *Journal of Financial Economics* 119, 249–283.
- Jensen, M. C., and W. H. Meckling, 1976, Theory of the firm: Managerial behavior, agency costs and ownership structure, *Journal of Financial Economics* 5, 305–360.
- Kogan, L., and D. Papanikolaou, 2012, A theory of firm characteristics and stock returns: The role of investment-specific shocks, .

- McConnell, J. J., and C.J. Muscarella, 1985, Corporate capital expenditure decisions and the market value of the firm, *Journal of Financial Economics* 14, 399–422.
- McDonald, R., and D. Siegel, 1986, The value of waiting to invest, *Quarterly Journal of Economics* 101, 707–728.
- Merton, R. C., 1987, A simple model of capital market equilibrium with incomplete information, *Journal of Finance* 42, 483–510.
- Pastor, L., and P. Veronesi, 2003, Stock valuation and learning about profitability, *Journal of Finance* 58, 1749–1789.
- Petersen, M. A., 2009, Estimating standard errors in finance panel data sets: Comparing approaches, *Review of Financial Studies* 22, 435–480.
- Roll, R., E. S. Schwartz, and A. Subrahmanyam, 2009, Options trading activity and firm valuation, *Journal of Financial Economics* 94, 345–360.
- Tobin, J., and W. C. Brainard, 1977, Asset markets and the cost of capital, *Economic Progress, Private Values and Public Policy, Essays In Honor of William Fellner, North-Holland* pp. 235–262.

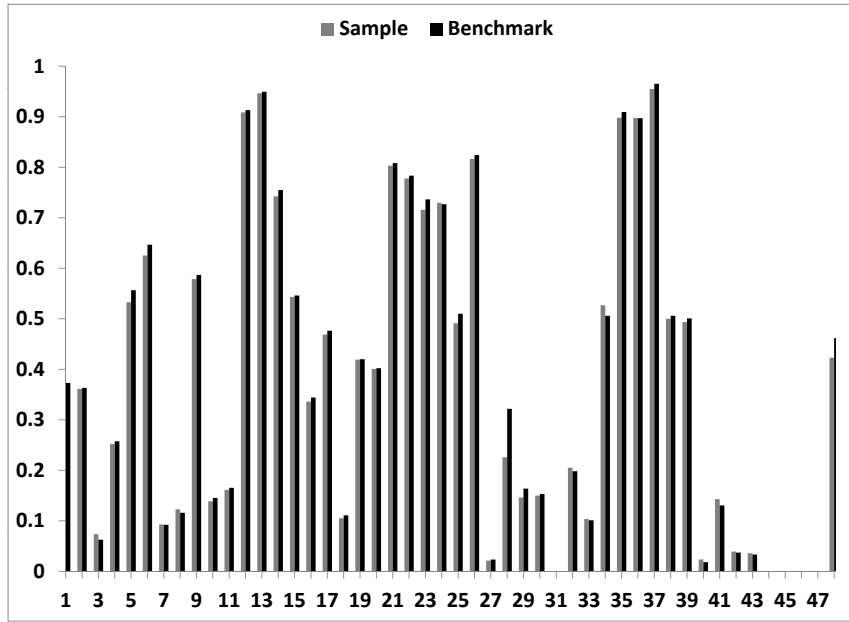


Figure 1: **Percentage of R&D Observations per FF-Industry.** This figure depicts the percentage of observations reporting R&D expenses per Fama-French industry. Sample refers to the whole sample, benchmark refers to the observations included in our regressions.

	Tobin	Vol_firm	Skew_firm	Turn_firm	Invest	Size	Roa	Leverage	Div_dum	RDexp
Panel A: All Observations										
Mean	1.941	0.600	0.152	0.006	0.265	-0.132	-0.014	0.211	0.371	0.630
Median	1.337	0.500	0.186	0.003	0.042	-0.290	0.065	0.169	0.000	0.000
Std. Dev.	2.528	0.407	1.380	0.017	2.297	2.241	0.450	0.214	0.483	8.452
Panel B: R&D Observations										
Mean	2.329	0.613	0.125	0.007	0.229	0.087	-0.065	0.165	0.346	1.326
Median	1.526	0.522	0.186	0.003	0.042	-0.137	0.059	0.119	0.000	0.048
Std. Dev.	3.226	0.402	1.363	0.022	2.259	2.285	0.555	0.192	0.476	12.226
Panel C: Non-R&D Observations										
Mean	1.590	0.587	0.176	0.005	0.298	-0.329	0.032	0.253	0.394	0.000
Median	1.213	0.481	0.186	0.002	0.042	-0.436	0.069	0.221	0.000	0.000
Std. Dev.	1.580	0.412	1.395	0.011	2.329	2.182	0.320	0.225	0.489	0.000

**Table 1: Summary Statistics for Firm Specific Variables.** This table provides summary statistics for the firm specific variables. Tobin is the ratio of market value to book value. Vol\_firm is a firm's historical volatility of the stock returns. Skew\_firms is a firm's historical skewness of the stock returns. Turn\_firm is the daily turnover of the shares of stock as a percentage of stocks outstanding. Invest is the ratio between capital expenditures and sales of a firm. Size is the logarithm of a firm's market capitalization deflated by CPI as reported by the Bureau of Labor Statistics. Roa is the return on assets defined as income before extraordinary items plus interest divided by lagged book value. Leverage is ratio between long-term debt and book value of assets. Div\_dum is an indicator variable for whether a firm pays a dividend. RDexp is the ratio between RD expenses and sales. Invest, Roa, Leverage, and RDexp at the 0.1% level. There are 156,938 observations coming from 16,732 firms. We have 74,544 observations including R&D expenses and 82,394 observations not including R&D expenses. The observations range from 1975 to 2015.

	Tobin	Treasury10	Vol_sp	Vol_firm	Skew_firm	Turn_firm	Invest	Size	Roa	Leverage	Div_dum	RDexp
Panel A: All Observations												
Tobin	1.000											
Treasury10	-0.060	1.000										
Vol_sp	-0.021	-0.217	1.000									
Vol_firm	0.093	-0.083	0.195	1.000								
Skew_firm	0.043	0.096	-0.063	0.068	1.000							
Turn_firm	0.109	-0.170	0.046	0.084	-0.024	1.000						
Invest	0.057	-0.005	0.004	0.046	-0.002	0.006	1.000					
Size	0.109	-0.287	0.021	-0.454	-0.075	0.139	-0.019	1.000				
Roa	-0.250	0.066	-0.032	-0.248	-0.004	-0.057	-0.127	0.149	1.000			
Leverage	-0.078	-0.001	0.020	0.016	-0.012	-0.024	0.011	0.022	0.029	1.000		
Div_dum	-0.124	0.123	-0.062	-0.417	0.000	-0.063	-0.056	0.406	0.183	-0.012	1.000	
Panel B: R&D Observations												
Tobin	1.000											
Treasury10	-0.062	1.000										
Vol_sp	-0.019	-0.222	1.000									
Vol_firm	0.128	-0.099	0.215	1.000								
Skew_firm	0.063	0.077	-0.061	0.083	1.000							
Turn_firm	0.107	-0.140	0.034	0.093	-0.013	1.000						
Invest	0.065	-0.019	0.004	0.044	-0.004	0.010	1.000					
Size	0.076	-0.235	0.005	-0.464	-0.077	0.110	-0.017	1.000				
Roa	-0.278	0.078	-0.031	-0.281	-0.019	-0.055	-0.159	0.164	1.000			
Leverage	-0.043	0.024	0.012	-0.017	-0.018	-0.028	-0.001	0.045	0.016	1.000		
Div_dum	-0.164	0.160	-0.070	-0.444	-0.005	-0.071	-0.054	0.433	0.206	0.046	1.000	
RDexp	0.098	-0.062	0.001	0.068	-0.011	0.013	0.648	-0.033	-0.214	-0.012	-0.077	1.000
Panel C: Non-R&D Observations												
Tobin	1.000											
Treasury10	-0.042	1.000										
Vol_sp	-0.038	-0.213	1.000									
Vol_firm	0.037	-0.066	0.175	1.000								
Skew_firm	0.025	0.111	-0.064	0.055	1.000							
Turn_firm	0.085	-0.247	0.075	0.078	-0.047	1.000						
Invest	0.061	0.005	0.005	0.048	-0.001	0.003	1.000					
Size	0.152	-0.329	0.033	-0.455	-0.071	0.202	-0.019	1.000				
Roa	-0.114	0.037	-0.031	-0.218	0.013	-0.043	-0.097	0.167	1.000			
Leverage	-0.072	-0.044	0.034	0.053	-0.015	0.007	0.015	0.041	-0.005	1.000		
Div_dum	-0.056	0.085	-0.053	-0.392	0.003	-0.051	-0.060	0.394	0.154	-0.075	1.000	

**Table 2: Correlation Matrix for R&D and Non-R&D Observations.** This table reports the correlations between the relevant variables. The correlations are calculated on the basis of 74,544 observations including R&D expenses and 82,394 observations not including R&D expenses. The observations range from 1975 to 2015. Invest, Roa, Leverage, and RDexp are winsorized at the 0.1% level.

	(1)	(2)	(3)	(4)	(5)	(6)
Treasury10	4.380** (3.28)	4.429*** (3.33)	4.469*** (3.35)	4.602*** (3.43)	4.552*** (3.41)	4.595*** (3.43)
Vol_sp	-1.875*** (-4.57)	-1.930*** (-4.76)	-1.922*** (-4.75)	-1.861*** (-4.62)	-1.917*** (-4.68)	-1.909*** (-4.67)
Vol_firm	0.582*** (4.24)	0.321*** (4.06)	0.329*** (4.07)	0.611*** (4.37)	0.315** (2.95)	0.324** (3.00)
Skew_firm	0.089*** (7.73)	0.088*** (7.82)	0.044*** (5.66)	0.088*** (7.43)	0.088*** (7.77)	0.043*** (5.55)
Turn_firm	7.505*** (3.91)	7.248*** (3.73)	7.245*** (3.73)	7.641*** (3.99)	7.257*** (3.73)	7.254*** (3.73)
Invest	0.025*** (5.41)	0.026*** (5.44)	0.026*** (5.45)	0.002 (0.30)	0.009 (1.50)	0.009 (1.47)
Size	0.285*** (6.83)	0.287*** (6.84)	0.287*** (6.84)	0.300*** (6.98)	0.288*** (6.96)	0.288*** (6.96)
Roa	-1.272*** (-10.65)	-1.244*** (-10.43)	-1.243*** (-10.42)	-1.283*** (-10.72)	-1.219*** (-10.06)	-1.217*** (-10.04)
Leverage	-0.731*** (-4.68)	-0.712*** (-4.63)	-0.713*** (-4.63)	-0.909*** (-5.66)	-0.713*** (-4.86)	-0.714*** (-4.88)
Div_dum	-0.775*** (-10.27)	-0.771*** (-10.54)	-0.772*** (-10.57)	-0.806*** (-10.71)	-0.771*** (-10.75)	-0.773*** (-10.78)
RD_dum	0.392*** (7.21)	0.035 (0.39)	0.035 (0.38)			
RD_vol_firm		0.600*** (3.71)	0.578*** (3.65)		0.620*** (7.08)	0.596*** (7.05)
RD_skew_firm			0.095*** (6.54)			0.097*** (6.72)
RDexp				0.013*** (5.74)	0.011*** (5.13)	0.011*** (5.19)
Intercept	1.815*** (13.28)	1.969*** (18.10)	1.968*** (17.84)	2.015*** (16.49)	1.971*** (15.19)	1.970*** (15.21)
$R^2$	0.134	0.137	0.137	0.130	0.138	0.138

**Table 3: Benchmark Regressions.** The table reports the results of panel regressions of Tobin's Q on selected variables. All regressions are based on 156,938 observations coming from 16,732 firms. There are 74,544 observations including R&D expenses and 82,394 observations not including R&D expenses. Financial firms and utilities are excluded from the sample. The sample ranges from 1975 to 2015. Invest, Roa, Leverage, and RDexp are winsorized at the 0.1% level. Robust Driscoll-Kraay  $t$ -statistics are reported in brackets. Asterisks correspond to the following  $p$ -values: \* $p < 0.05$ , \*\* $p < 0.01$ , \*\*\* $p < 0.001$ .



	(2)	(2: FF)	(2: CAPM)	(5)	(5: FF)	(5: CAPM)
Treasury10	4.429*** (3.33)	4.335** (3.31)	4.386*** (3.38)	4.552*** (3.41)	4.452*** (3.36)	4.504*** (3.44)
Vol_sp	-1.930*** (-4.76)	-1.994*** (-4.92)	-1.621*** (-4.15)	-1.917*** (-4.68)	-1.978*** (-4.87)	-1.603*** (-4.08)
Skew_firm	0.088*** (7.82)	0.088*** (7.59)	0.086*** (7.60)	0.088*** (7.77)	0.089*** (7.50)	0.087*** (7.51)
Turn_firm	7.248*** (3.73)	7.110*** (3.52)	7.440*** (3.77)	7.257*** (3.73)	7.146*** (3.55)	7.470*** (3.79)
Invest	0.026*** (5.44)	0.026*** (5.43)	0.026*** (5.44)	0.009 (1.50)	0.009 (1.52)	0.009 (1.51)
Size	0.287*** (6.84)	0.284*** (6.89)	0.297*** (6.92)	0.288*** (6.96)	0.284*** (7.04)	0.297*** (7.05)
Roa	-1.244*** (-10.43)	-1.240*** (-10.33)	-1.242*** (-10.45)	-1.219*** (-10.06)	-1.215*** (-9.99)	-1.217*** (-10.10)
Leverage	-0.712*** (-4.63)	-0.704*** (-4.69)	-0.707*** (-4.62)	-0.713*** (-4.86)	-0.697*** (-4.90)	-0.701*** (-4.82)
Div_dum	-0.771*** (-10.54)	-0.760*** (-11.09)	-0.773*** (-10.84)	-0.771*** (-10.75)	-0.759*** (-11.20)	-0.772*** (-10.92)
RD_dum	0.035 (0.39)	-0.040 (-0.34)	-0.019 (-0.16)			
Vol_firm	0.321*** (4.06)			0.315** (2.95)		
RD_vol_firm	0.600*** (3.71)			0.620*** (7.08)		
Vol_ff_sys		-0.143 (-0.46)			-0.090 (-0.29)	
Vol_ff_unsys		0.344*** (3.79)			0.364** (3.25)	
RD_vol_ff_sys		0.969 (1.85)			0.870* (2.48)	
RD_vol_ff_unsys		0.488*** (3.99)			0.444*** (6.51)	
Vol_capm_sys			-0.602* (-2.09)			-0.576* (-2.15)
Vol_capm_unsys			0.374*** (4.44)			0.390*** (3.56)
RD_vol_capm_sys			0.741 (1.58)			0.687* (2.17)
RD_vol_capm_unsys			0.565*** (3.87)			0.532*** (6.86)
RDexp				0.011*** (5.13)	0.011*** (5.13)	0.011*** (5.17)
Intercept	1.969*** (18.10)	1.997*** (18.68)	1.971*** (19.02)	1.971*** (15.19)	1.964*** (14.87)	1.948*** (15.09)
R <sup>2</sup>	0.137	0.137	0.137	0.138	0.138	0.138

**Table 4: Regressions with Volatility Decomposition.** The table reports the results of panel regressions of Tobin's Q on selected variables. Firm volatility is decomposed into a systematic and an unsystematic part. Regressions (2: FF) and (5: FF) uses a decomposition coming from a three-factor Fama-French model, whereas regressions (2: CAPM) and (5: CAPM) uses a decomposition coming from a one-factor CAPM. The results can be compared with regressions (2) and (5) where volatility is not decomposed (also reported in Table 3). All regressions are based on 156,938 observations coming from 16,732 firms. There are 74,544 observations including R&D expenses and 82,394 observations not including R&D expenses. Financial firms and utilities are excluded from the sample. The sample ranges from 1975 to 2015. Invest, Roa, Leverage, and RDexp are winsorized at the 0.1% level. Robust Driscoll-Kraay  $t$ -statistics are reported in brackets. Asterisks correspond to the following  $p$ -values: \* $p < 0.05$ , \*\* $p < 0.01$ , \*\*\* $p < 0.001$ .

	Low	2	3	4	5	6	7	8	9	High	HL
Panel A: All Observations											
Alpha_ff3	0.002** (3.12)	0.002* (2.48)	0.002** (2.40)	0.002** (2.77)	0.002** (2.82)	0.001 (1.37)	-0.000 (-0.17)	-0.002 (-1.46)	-0.004* (-2.11)	-0.005 (-1.49)	-0.007* (-2.02)
Alpha_ff4	0.002*** (3.65)	0.002** (3.14)	0.002** (2.94)	0.003*** (3.45)	0.003** (3.06)	0.002* (2.07)	0.001 (0.74)	-0.000 (-0.29)	-0.002 (-0.82)	-0.002 (-0.64)	-0.005 (-1.28)
Size	2.530	1.866	1.253	0.738	0.298	-0.144	-0.577	-1.001	-1.567	-2.388	
Vol_ff_unsys	0.189	0.257	0.311	0.368	0.428	0.495	0.573	0.674	0.827	1.296	
Vol_total	0.226	0.296	0.351	0.408	0.469	0.536	0.611	0.707	0.855	1.318	
RDexp	0.022	0.029	0.028	0.116	0.431	0.639	1.006	1.393	2.220	2.064	
Invest	0.086	0.104	0.138	0.176	0.214	0.275	0.296	0.439	0.517	0.524	
Tobin	1.658	1.599	1.605	1.687	1.826	1.946	2.028	2.117	2.317	2.275	
Turn_firm	0.003	0.004	0.005	0.005	0.006	0.006	0.006	0.006	0.006	0.007	
Skew_firm	0.075	0.074	0.087	0.107	0.109	0.141	0.105	0.149	0.245	0.522	
Leverage	0.207	0.219	0.225	0.223	0.219	0.210	0.204	0.206	0.219	0.246	
Roa	0.094	0.089	0.079	0.073	0.057	0.028	-0.016	-0.080	-0.129	-0.231	
Panel B: R&D Observations											
Alpha_ff3	0.002** (2.73)	0.001 (1.61)	0.001 (1.93)	0.002* (1.99)	0.004* (2.55)	0.003 (1.82)	0.000 (0.25)	-0.001 (-0.56)	-0.002 (-0.83)	-0.002 (-0.60)	-0.004 (-1.07)
Alpha_ff4	0.002*** (3.50)	0.002* (2.16)	0.002** (3.04)	0.003** (2.77)	0.004*** (3.40)	0.004* (2.44)	0.002 (1.19)	0.001 (0.52)	0.001 (0.20)	0.001 (0.31)	-0.001 (-0.26)
Size	3.112	2.255	1.439	0.873	0.370	-0.103	-0.541	-0.985	-1.464	-2.233	
Vol_ff_unsys	0.188	0.255	0.318	0.382	0.446	0.514	0.592	0.687	0.827	1.251	
Vol_total	0.230	0.299	0.361	0.428	0.490	0.558	0.632	0.722	0.856	1.273	
RDexp	0.044	0.062	0.146	0.617	0.871	1.523	2.032	3.206	3.423	3.820	
Invest	0.066	0.065	0.077	0.148	0.181	0.271	0.265	0.478	0.435	0.377	
Tobin	1.722	1.667	1.770	2.068	2.276	2.405	2.496	2.562	2.678	2.936	
Turn_firm	0.004	0.005	0.005	0.006	0.007	0.007	0.007	0.007	0.006	0.008	
Skew_firm	0.024	0.030	0.053	0.050	0.085	0.105	0.083	0.116	0.203	0.510	
Leverage	0.186	0.191	0.178	0.166	0.157	0.152	0.148	0.149	0.168	0.186	
Roa	0.096	0.082	0.074	0.050	0.023	-0.025	-0.081	-0.164	-0.237	-0.344	
Panel C: Non-R&D Observations											
Alpha_ff3	0.003** (3.21)	0.002** (3.08)	0.002** (2.62)	0.002* (2.46)	0.002 (1.74)	0.000 (0.29)	-0.001 (-1.00)	-0.004* (-2.09)	-0.007** (-2.70)	-0.008* (-2.61)	-0.011** (-2.61)
Alpha_ff4	0.003*** (3.33)	0.003*** (3.77)	0.002** (2.95)	0.003** (3.10)	0.002 (1.86)	0.001 (0.64)	-0.000 (-0.22)	-0.003 (-1.28)	-0.004 (-1.70)	-0.006 (-1.52)	-0.007* (-2.10)
Size	1.879	1.529	1.058	0.678	0.272	-0.115	-0.587	-1.011	-1.629	-2.496	
Vol_ff_unsys	0.191	0.260	0.310	0.359	0.412	0.474	0.548	0.652	0.816	1.321	
Vol_total	0.221	0.295	0.346	0.396	0.449	0.511	0.583	0.683	0.843	1.343	
RDexp	0.000	0.000	0.000	0.000	0.000	0.000	0.000	0.000	0.000	0.000	
Invest	0.108	0.139	0.179	0.218	0.273	0.275	0.323	0.449	0.535	0.621	
Tobin	1.595	1.545	1.533	1.504	1.493	1.469	1.512	1.490	1.752	1.693	
Turn_firm	0.003	0.004	0.005	0.005	0.005	0.005	0.005	0.005	0.005	0.006	
Skew_firm	0.118	0.122	0.129	0.153	0.121	0.159	0.131	0.174	0.286	0.524	
Leverage	0.229	0.244	0.260	0.265	0.266	0.271	0.266	0.275	0.279	0.304	
Roa	0.091	0.090	0.086	0.081	0.077	0.066	0.042	0.012	-0.004	-0.114	

**Table 5: Alphas of Portfolios Constructed on the Basis of Ivol.** Equal-weighted portfolios are formed each year on the basis of the size of idiosyncratic volatility computed from a Fama-French model. The ivol portfolios are arranged from Low ivol to High ivol. The table reports the alphas, Alpha\_ff3, from *contemporaneous* regressions of the monthly excess portfolio returns on the three Fama-French factors for the fiscal year whose data is used to calculate the ivol on which the portfolios are based. Also reported are the alphas of a four-factor model with momentum, Alpha\_ff4. HL refers the difference portfolio between high ivol firms and low ivol firms. In column HL of Panel C (right-hand side of alpha of HL), we also report the alpha of the diff-in-diff portfolio (HL of non-RD observations minus HL of RD observations). Sample averages of other variables are also reported. All variables are defined as in Table 1. The sample period is from 1975 to 2015. Only firms with fiscal year ending in December are included. Robust Newey-West  $t$ -statistics are reported in brackets. Asterisks correspond to the following  $p$ -values: \* $p < 0.05$ , \*\* $p < 0.01$ , \*\*\* $p < 0.001$ .

Six R&D Expenses Sub-Portfolios					
Portfolio:	Zero R&D	Low R&D	High R&D	HL R&D	HZ R&D
1	0.003** (3.07)	0.002 (1.93)	0.003** (3.09)	0.001 (1.19)	0.000 (0.48)
2	0.002** (2.59)	-0.001 (-0.55)	0.005*** (3.60)	0.006*** (3.31)	0.003* (2.09)
3	0.002* (2.31)	-0.002 (-1.59)	0.005*** (3.82)	0.007** (3.30)	0.003 (1.73)
4	0.002* (2.39)	-0.003 (-1.71)	0.008*** (4.61)	0.011*** (3.91)	0.006** (3.11)
5	0.002 (1.75)	-0.003* (-1.99)	0.010*** (3.46)	0.013*** (3.62)	0.008* (2.50)
6	-0.001 (-0.83)	-0.001 (-0.78)	0.011*** (4.31)	0.012*** (3.68)	0.012*** (3.96)
7	-0.003 (-1.27)	-0.006** (-3.06)	0.008* (2.57)	0.014*** (3.50)	0.011* (2.52)
8	-0.005* (-2.11)	-0.003 (-1.00)	0.007* (2.00)	0.010* (2.12)	0.012** (2.69)
9	-0.006 (-1.79)	-0.009** (-2.74)	0.008 (1.51)	0.017** (2.71)	0.014* (2.18)
10	-0.008 (-1.94)	-0.008 (-1.70)	0.005 (0.85)	0.014* (2.28)	0.013* (2.01)

**Table 6: Alphas of Double-sorted Portfolios Constructed on the Basis of Ivol and R&D.** Equal-weighted portfolios are formed each year on the basis of the size of idiosyncratic volatility computed from a Fama-French model and R&D expenses (normalized by lagged book value). The ivol portfolios are arranged from Low ivol to High ivol (in rows). The alphas of the R&D portfolios are in columns. HL R&D (HZ R&D) denotes the difference portfolio of high R&D observations minus low R&D observations (observations with zero R&D). The alphas come from *contemporaneous* regressions of the monthly excess portfolio returns on the three Fama-French factors for several periods relative to December of the end of the fiscal year whose data are used to calculate R&D expenses and the ivol on which the portfolios are based. The sample period is from 1975 to 2015. Only firms with fiscal year ending in December are included. Robust Newey-West  $t$ -statistics are reported in brackets. Asterisks correspond to the following  $p$ -values: \* $p < 0.05$ , \*\* $p < 0.01$ , \*\*\* $p < 0.001$ .

	(a2)	(a2: FF)	(a2: CAPM)	(a5)	(a5: FF)	(a5: CAPM)
Treasury10	0.115*	0.113*	0.113*	0.113*	0.113*	0.114*
	(2.20)	(2.21)	(2.21)	(2.14)	(2.16)	(2.17)
Vol_sp	0.007	0.011	0.013	0.008	0.011	0.014
	(0.35)	(0.53)	(0.63)	(0.43)	(0.55)	(0.67)
Skew_firm	0.010***	0.010***	0.010***	0.010***	0.010***	0.010***
	(15.35)	(15.14)	(15.12)	(15.32)	(15.04)	(15.03)
Turn_firm	0.116	0.120	0.123	0.123	0.125	0.129
	(1.27)	(1.32)	(1.34)	(1.33)	(1.37)	(1.39)
Invest	0.000	0.000	0.000	-0.000	-0.000	-0.000
	(0.36)	(0.36)	(0.35)	(-0.58)	(-0.60)	(-0.59)
Size	0.007***	0.007***	0.007***	0.006***	0.007***	0.007***
	(8.35)	(8.74)	(8.99)	(8.19)	(8.65)	(8.93)
Roa	0.009***	0.009***	0.009***	0.009***	0.010***	0.010***
	(5.99)	(6.03)	(5.93)	(6.15)	(6.15)	(6.08)
Leverage	-0.018***	-0.018***	-0.018***	-0.017***	-0.017***	-0.018***
	(-9.87)	(-10.32)	(-10.18)	(-8.82)	(-9.79)	(-9.69)
Div_dum	-0.007***	-0.007***	-0.007***	-0.007***	-0.007***	-0.007***
	(-4.37)	(-4.37)	(-4.40)	(-4.26)	(-4.35)	(-4.38)
RD_dum	-0.009***	-0.010***	-0.009***			
	(-4.61)	(-4.44)	(-4.09)			
Vol_firm	0.015***			0.019***		
	(4.46)			(5.11)		
RD_vol_firm	0.015***			0.004*		
	(4.70)			(2.72)		
Vol_ff_sys		-0.003			0.008	
		(-0.22)			(0.74)	
Vol_ff_unsys		0.015***			0.018***	
		(4.52)			(5.13)	
RD_vol_ff_sys		0.013			-0.008	
		(0.90)			(-0.67)	
RD_vol_ff_unsys		0.013***			0.007*	
		(4.04)			(2.45)	
Vol_capm_sys			-0.003			0.006
			(-0.25)			(0.54)
Vol_capm_unsys			0.015***			0.018***
			(4.59)			(5.32)
RD_vol_capm_sys			0.005			-0.014
			(0.38)			(-1.40)
RD_vol_capm_unsys			0.015***			0.007***
			(4.82)			(3.62)
RDexp				0.000*	0.000*	0.000*
				(2.21)	(2.19)	(2.19)
Intercept	-0.013**	-0.013**	-0.014**	-0.017***	-0.018***	-0.018***
	(-3.04)	(-3.06)	(-3.22)	(-3.76)	(-3.95)	(-4.02)
R <sup>2</sup>	0.118	0.118	0.118	0.116	0.117	0.117

**Table 7: Regressions of Firm-level Alpha with Volatility Decomposition.** The table reports the results of panel regressions of annual averages of firm-level alphas on the same explanatory variables as in Table 4. Every year the average is formed over monthly alphas. Firm volatility is decomposed into a systematic and an unsystematic part. Regressions (a2: FF) and (a5: FF) uses a decomposition coming from a three-factor Fama-French model, whereas regressions (a2: CAPM) and (a5: CAPM) uses a decomposition coming from a one-factor CAPM. The results can be compared with regressions (a2) and (a5) where volatility is not decomposed. All regressions are based on 91,273 observations coming from 10,419 firms. There are 44,236 observations including R&D expenses and 47,037 observations not including R&D expenses. Financial firms and utilities are excluded from the sample. Only firms with fiscal year ending in December are included. The sample ranges from 1975 to 2015. Invest, Roa, Leverage, and RDexp are winsorized at the 0.1% level. Robust Driscoll-Kraay  $t$ -statistics are reported in brackets. Asterisks correspond to the following  $p$ -values: \* $p < 0.05$ , \*\* $p < 0.01$ , \*\*\* $p < 0.001$ .

	Tobin	Treasury10	Vol <sub>sp</sub>	Vol <sub>firm</sub>	Skew <sub>firm</sub>	Turn <sub>firm</sub>	Invest	Size	Roa	Leverage	Div <sub>dum</sub>	Vol <sub>ff_pca_sys</sub>	Vol <sub>ff_pca_unsys</sub>	RDexp
Panel A: All Observations														
Vol <sub>ff_pca_sys</sub>	0.047	-0.244	0.549	0.534	-0.030	0.307	0.045	-0.028	-0.160	0.046	-0.232	1.000		
Vol <sub>ff_pca_unsys</sub>	0.097	-0.107	0.230	0.986	0.118	0.150	0.054	-0.609	-0.363	-0.004	-0.460	0.395	1.000	
Panel B: R&D Observations														
Vol <sub>ff_pca_sys</sub>	0.067	-0.225	0.540	0.553	-0.023	0.291	0.034	-0.060	-0.167	0.002	-0.279	1.000		
Vol <sub>ff_pca_unsys</sub>	0.129	-0.137	0.237	0.988	0.120	0.170	0.063	-0.609	-0.384	-0.047	-0.494	0.428	1.000	
RDexp	0.096	-0.061	-0.005	0.091	-0.013	0.026	0.628	-0.074	-0.229	-0.001	-0.096	0.034	0.094	1.000
Panel C: Non-R&D Observations														
Vol <sub>ff_pca_sys</sub>	-0.014	-0.264	0.560	0.512	-0.037	0.326	0.061	0.003	-0.163	0.109	-0.181	1.000		
Vol <sub>ff_pca_unsys</sub>	0.009	-0.075	0.223	0.984	0.118	0.121	0.044	-0.617	-0.371	0.060	-0.421	0.357	1.000	

**Table 8: Volatility Correlations for the PCA Subsample.** This table reports the correlations between the relevant variables and the volatility parts derived from a PCA with two components. All regressions are based on 67,290 observations coming from 8,522 firms. There are 34,336 observations including R&D expenses and 32,954 observations not including R&D expenses. Financial firms and utilities are excluded from the sample. The sample ranges from 1975 to 2015. Additional information on the sample can be found in Section 7. Invest, Roa, Leverage, and RDexp are winsorized at the 0.1% level.

	(2: FF)	(2: FF&PCA)	(5: FF)	(5: FF&PCA)
Treasury10	0.788 (0.60)	0.735 (0.62)	0.863 (0.63)	0.812 (0.67)
Vol_sp	-2.021*** (-7.78)	-1.638*** (-6.36)	-2.004*** (-7.62)	-1.631*** (-6.30)
Skew_firm	0.104*** (10.08)	0.102*** (10.09)	0.106*** (10.41)	0.103*** (10.48)
Turn_firm	4.256 (1.48)	5.077 (1.70)	4.245 (1.47)	5.041 (1.68)
Invest	0.012 (1.41)	0.013 (1.55)	-0.010 (-1.72)	-0.009 (-1.61)
Size	0.295*** (10.37)	0.308*** (10.28)	0.296*** (10.09)	0.308*** (10.01)
Roa	-1.910*** (-7.06)	-1.908*** (-7.07)	-1.861*** (-6.89)	-1.859*** (-6.89)
Leverage	-0.505 (-1.68)	-0.503 (-1.66)	-0.499 (-1.73)	-0.500 (-1.72)
Div_dum	-0.687*** (-8.73)	-0.696*** (-8.60)	-0.687*** (-8.77)	-0.695*** (-8.68)
RD_dum	-0.018 (-0.09)	0.009 (0.05)		
Vol_ff_sys	-0.697** (-3.37)		-0.669 (-1.67)	
Vol_ff_unsys	0.392*** (4.04)		0.416*** (4.48)	
RD_vol_ff_sys	0.656* (2.43)		0.613 (1.98)	
RD_vol_ff_unsys	0.583** (3.21)		0.546*** (9.64)	
Vol_ff_pca_sys		-0.975*** (-4.41)		-0.962* (-2.44)
Vol_ff_pca_unsys		0.496*** (4.85)		0.507*** (5.80)
RD_vol_ff_pca_sys		0.358 (1.42)		0.367 (1.22)
RD_vol_ff_pca_unsys		0.615** (3.26)		0.599*** (7.93)
RDexp			0.010*** (4.79)	0.010*** (4.72)
Intercept	2.119*** (11.78)	2.075*** (11.97)	2.094*** (22.98)	2.065*** (24.56)
$R^2$	0.127	0.129	0.129	0.130

**Table 9: Regressions with Volatility Decomposition Involving a PCA.** The table reports the results of panel regressions of Tobin's Q on selected variables. Firm volatility is decomposed into a systematic and an unsystematic part where the ivol definition (7.3) is applied with two components. Apart from that the regressions are using the same variables as the ones in Table 4. All regressions are based on 67,290 observations coming from 8,522 firms. There are 34,336 observations including R&D expenses and 32,954 observations not including R&D expenses. Financial firms and utilities are excluded from the sample. The sample ranges from 1975 to 2015. Additional information on the sample can be found in Section 7. Invest, Roa, Leverage, and RDexp are winsorized at the 0.1% level. Robust Driscoll-Kraay  $t$ -statistics are reported in brackets. Asterisks correspond to the following  $p$ -values: \* $p < 0.05$ , \*\* $p < 0.01$ , \*\*\* $p < 0.001$ .

	(a2: FF)	(a2: FF&PCA)	(a5: FF)	(a5: FF&PCA)
Treasury10	0.094*	0.094*	0.094*	0.093*
	(2.12)	(2.16)	(2.06)	(2.10)
Vol_sp	0.003	0.011	0.003	0.011
	(0.13)	(0.51)	(0.13)	(0.51)
Skew_firm	0.009***	0.009***	0.009***	0.009***
	(12.12)	(11.98)	(12.06)	(11.93)
Turn_firm	0.099	0.130	0.103	0.133
	(0.75)	(0.99)	(0.78)	(1.01)
Invest	-0.000	-0.000	-0.000*	-0.000*
	(-1.45)	(-1.37)	(-2.48)	(-2.46)
Size	0.007***	0.007***	0.007***	0.007***
	(8.82)	(9.05)	(8.76)	(9.00)
Roa	0.016***	0.016***	0.016***	0.016***
	(5.76)	(5.66)	(5.95)	(5.84)
Leverage	-0.017***	-0.017***	-0.016***	-0.016***
	(-8.44)	(-8.40)	(-8.23)	(-8.19)
Div_dum	-0.007***	-0.007***	-0.007***	-0.007***
	(-4.84)	(-4.92)	(-4.77)	(-4.82)
RD_dum	-0.010***	-0.011***		
	(-4.01)	(-4.09)		
Vol_ff_sys	-0.002		0.010	
	(-0.12)		(0.74)	
Vol_ff_unsys	0.024***		0.027***	
	(5.08)		(6.16)	
RD_vol_ff_sys	0.020		-0.002	
	(1.13)		(-0.19)	
RD_vol_ff_unsys	0.012**		0.005	
	(3.17)		(1.42)	
Vol_ff_pca_sys		-0.012		-0.001
		(-0.81)		(-0.07)
Vol_ff_pca_unsys		0.026***		0.030***
		(6.17)		(7.36)
RD_vol_ff_pca_sys		0.024		0.001
		(1.28)		(0.10)
RD_vol_ff_pca_unsys		0.011*		0.003
		(2.52)		(0.92)
RDexp			0.000*	0.000*
			(2.53)	(2.44)
Intercept	-0.016***	-0.016***	-0.021***	-0.022***
	(-3.68)	(-3.88)	(-4.74)	(-4.98)
R <sup>2</sup>	0.143	0.145	0.141	0.142

**Table 10: Regressions of Firm-level Alpha with Volatility Decomposition Involving a PCA.** The table reports the results of panel regressions of annual averages of firm-level alphas on selected variables. Firm volatility is decomposed into a systematic and an unsystematic part where the ivol definition (7.3) with two components is applied. Apart from that the regressions are using the same variables as the ones in Table 7. All regressions are based on 67,323 observations coming from 8,527 firms. There are 34,343 observations including R&D expenses and 32,980 observations not including R&D expenses. Financial firms and utilities are excluded from the sample. The sample ranges from 1975 to 2015. Additional information on the sample can be found in Section 7. Invest, Roa, Leverage, and RDexp are winsorized at the 0.1% level. Robust Driscoll-Kraay  $t$ -statistics are reported in brackets. Asterisks correspond to the following  $p$ -values: \* $p < 0.05$ , \*\* $p < 0.01$ , \*\*\* $p < 0.001$ .

# ADDITIONAL TABLES



	(2: FF)	(2: FF&PCA)	(5: FF)	(5: FF&PCA)
Treasury10	0.788 (0.60)	0.743 (0.62)	0.863 (0.63)	0.821 (0.67)
Vol_sp	-2.021*** (-7.78)	-1.637*** (-6.32)	-2.004*** (-7.62)	-1.631*** (-6.23)
Skew_firm	0.104*** (10.08)	0.102*** (10.19)	0.106*** (10.41)	0.103*** (10.60)
Turn_firm	4.256 (1.48)	5.086 (1.72)	4.245 (1.47)	5.048 (1.70)
Invest	0.012 (1.41)	0.013 (1.57)	-0.010 (-1.72)	-0.009 (-1.59)
Size	0.295*** (10.37)	0.308*** (10.29)	0.296*** (10.09)	0.308*** (10.02)
Roa	-1.910*** (-7.06)	-1.908*** (-7.07)	-1.861*** (-6.89)	-1.859*** (-6.89)
Leverage	-0.505 (-1.68)	-0.505 (-1.67)	-0.499 (-1.73)	-0.501 (-1.74)
Div_dum	-0.687*** (-8.73)	-0.695*** (-8.59)	-0.687*** (-8.77)	-0.694*** (-8.68)
RD_dum	-0.018 (-0.09)	0.010 (0.05)		
Vol_ff_sys	-0.697** (-3.37)		-0.669 (-1.67)	
Vol_ff_unsys	0.392*** (4.04)		0.416*** (4.48)	
RD_vol_ff_sys	0.656* (2.43)		0.613 (1.98)	
RD_vol_ff_unsys	0.583** (3.21)		0.546*** (9.64)	
Vol_ff_pca_sys		-0.944*** (-4.06)		-0.930* (-2.29)
Vol_ff_pca_unsys		0.542*** (4.83)		0.552*** (6.11)
RD_vol_ff_pca_sys		0.352 (1.43)		0.360 (1.18)
RD_vol_ff_pca_unsys		0.608** (3.25)		0.593*** (6.63)
RDexp			0.010*** (4.79)	0.010*** (4.72)
Intercept	2.119*** (11.78)	2.071*** (11.85)	2.094*** (22.98)	2.061*** (23.91)
$R^2$	0.127	0.129	0.129	0.130

Table 11: Regressions with Volatility Decomposition Involving a PCA. TABLE 9 with 5 components.

	(a2: FF)	(a2: FF&PCA)	(a5: FF)	(a5: FF&PCA)
Treasury10	0.094* (2.12)	0.094* (2.17)	0.094* (2.06)	0.093* (2.11)
Vol_sp	0.003 (0.13)	0.012 (0.58)	0.003 (0.13)	0.012 (0.58)
Skew_firm	0.009*** (12.12)	0.009*** (11.95)	0.009*** (12.06)	0.009*** (11.89)
Turn_firm	0.099 (0.75)	0.135 (1.00)	0.103 (0.78)	0.137 (1.02)
Invest	-0.000 (-1.45)	-0.000 (-1.31)	-0.000* (-2.48)	-0.000* (-2.41)
Size	0.007*** (8.82)	0.007*** (9.23)	0.007*** (8.76)	0.007*** (9.20)
Roa	0.016*** (5.76)	0.016*** (5.65)	0.016*** (5.95)	0.016*** (5.83)
Leverage	-0.017*** (-8.44)	-0.017*** (-8.37)	-0.016*** (-8.23)	-0.016*** (-8.13)
Div_dum	-0.007*** (-4.84)	-0.007*** (-4.94)	-0.007*** (-4.77)	-0.007*** (-4.82)
RD_dum	-0.010*** (-4.01)	-0.011*** (-4.08)		
Vol_ff_sys	-0.002 (-0.12)		0.010 (0.74)	
Vol_ff_unsys	0.024*** (5.08)		0.027*** (6.16)	
RD_vol_ff_sys	0.020 (1.13)		-0.002 (-0.19)	
RD_vol_ff_unsys	0.012** (3.17)		0.005 (1.42)	
Vol_ff_pca_sys		-0.013 (-0.89)		-0.002 (-0.13)
Vol_ff_pca_unsys		0.027*** (6.59)		0.031*** (7.71)
RD_vol_ff_pca_sys		0.025 (1.38)		0.002 (0.19)
RD_vol_ff_pca_unsys		0.010* (2.08)		0.003 (0.73)
RDexp			0.000* (2.53)	0.000* (2.44)
Intercept	-0.016*** (-3.68)	-0.016*** (-3.97)	-0.021*** (-4.74)	-0.022*** (-5.07)
R <sup>2</sup>	0.143	0.145	0.141	0.142

Table 12: Regressions of Firm-level Alpha with Volatility Decomposition Involving a PCA. TABLE 10 with 5 components.