

NBER WORKING PAPER SERIES

TRADE AND GEOGRAPHY IN THE ORIGINS AND SPREAD OF ISLAM

Stelios Michalopoulos
Alireza Naghavi
Giovanni Prarolo

Working Paper 18438
<http://www.nber.org/papers/w18438>

NATIONAL BUREAU OF ECONOMIC RESEARCH
1050 Massachusetts Avenue
Cambridge, MA 02138
October 2012, Revised June 2017

We would like to thank the Editor and three anonymous referees for their valuable comments. We have also benefited from discussions with several colleagues and comments from numerous seminars and conferences. Stelios Michalopoulos was a visiting Fellow at Collegio Carlo Alberto while this project was written and gratefully acknowledges their hospitality. Funding from Faculty Research Awards Committee at Tufts University is also acknowledged. The views expressed herein are those of the authors and do not necessarily reflect the views of the National Bureau of Economic Research.

NBER working papers are circulated for discussion and comment purposes. They have not been peer-reviewed or been subject to the review by the NBER Board of Directors that accompanies official NBER publications.

© 2012 by Stelios Michalopoulos, Alireza Naghavi, and Giovanni Prarolo. All rights reserved. Short sections of text, not to exceed two paragraphs, may be quoted without explicit permission provided that full credit, including © notice, is given to the source.

Trade and Geography in the Origins and Spread of Islam
Stelios Michalopoulos, Alireza Naghavi, and Giovanni Prarolo
NBER Working Paper No. 18438
October 2012, Revised June 2017
JEL No. N0,N27,N3,O0,O1,O43,Z0,Z1,Z12

ABSTRACT

In this study we explore the historical determinants of contemporary Muslim representation. Motivated by a plethora of case studies and historical accounts among Islamicists stressing the role of trade for the adoption of Islam, we construct detailed data on pre-Islamic trade routes, harbors, and ports to determine the empirical regularity of this argument. Our analysis—conducted across countries and across ethnic groups within countries—establishes that proximity to the pre-600 CE trade network is a robust predictor of today's Muslim adherence in the Old World. We also show that Islam spread successfully in regions that are ecologically similar to the birthplace of the religion, the Arabian Peninsula. Namely, territories characterized by a large share of arid and semi- arid regions dotted with few pockets of fertile land are more likely to host Muslim communities. We discuss the various mechanisms that may give rise to the observed pattern.

Stelios Michalopoulos
Brown University
Department of Economics
64 Waterman Street
Providence, RI 02912
and NBER
smichalo@brown.edu

Giovanni Prarolo
University of Bologna
Piazza Scaravilli 2
40125 Bologna
ITALY
giovanni.prarolo@unibo.it

Alireza Naghavi
Department of Economics
University of Bologna
Piazza Scaravilli 2
Bologna 40126
Italy
alireza.naghavi@unibo.it

*" O you who believe! Eat not up your property among yourselves unjustly
except it be a trade amongst you, by mutual consent.
And do not kill yourselves (nor kill one another).
Surely, Allah is Most Merciful to you."
The Noble Qur'an (Hilali-Khan translation), Surah An-Nisa', 4:29*¹

1 Introduction

Religion is significantly correlated with a range of economic and political outcomes both within and across countries.² This can, perhaps, be linked to the fact that religious people tend to be more trusting in general (Guiso, Sapienza, and Zingales, 2003). Given the importance of religion in society, a natural question to ask is what factors contributed to the distribution of religions around the globe that we see today.

In this study, we focus on the spread of one religion – Islam. There has been growing interest in Muslim societies in recent years amongst economists and political scientists, see for example, Blydes (2014), Campante and Yanagizawa-Drott (2015), Clingingsmith, Khwaja, and Kremer (2009), Jha (2013), and Kuran (2004). Our analysis investigates the role that ancient trade routes have played in facilitating the spread of Islam. Motivated by numerous case studies on the historical relationship between trade and Islam, we construct detailed data on pre-Islamic trade routes, ports, and harbors. Proximity to the pre-600 CE trade network is a robust predictor of today's Muslim adherence in the Old World. We also show that Islam spread successfully in regions that are ecologically similar to the birthplace of the religion, the Arabian Peninsula.

The empirical analysis establishes that countries located closer to historical trade routes are more likely to be Muslim. We then investigate whether this empirical regularity holds at the more disaggregated level of ethnic homelands within countries. Exploiting within-country variation has straightforward advantages. First, it allows us to test in a sharper manner whether differences in proximity to pre-Islamic trade routes are meaningful predictors of local adherence to Islam. Second, leveraging within contemporary-state variation in Muslim representation mitigates concerns related to the endogeneity of current political boundaries. Modern states, arguably, have affected religious affiliation in a multitude of ways including state-sponsored religion. As such, it is crucial to account for these nationwide histories.

These findings are in line with a rich body of earlier work by prominent Islamicists including Lapidus (2002), Berkey (2003), and Lewis (1993), who have extensively discussed the role of long-distance trade, noting both the diffusion of Muslims along trade routes (Geertz, 1968; Lewis, 1980; Trimingham, 1962) and the importance that Islamic scriptures confer on trade-related matters (Cohen, 1971; Hiskett, 1984; Last, 1979). An innovation of Islam was the practice of direct trade, where

¹Translation by Dr. Muhammad Taqi-ud-Din Al-Hilali and Dr. Muhammad Muhsin Khan in 1999.

²See Barro and McCleary (2006a, 2006b) for an overview and Barro and McCleary (2003), La Porta et al. (1997), Martin, Doppelhofer, and Miller (2004), and Pryor (2007), among others for mixed evidence of the impact of religion on economic indicators.

Muslim merchants personally carried goods over long distances along the trade routes rather than relying on intermediaries. For example, the acceptance of Islam in most of Inner Asia, Southeast Asia, and Sub-Saharan Africa is known to have occurred primarily through contacts with Muslim merchants (Insoll, 2003; Lapidus, 2002; Levtzion, 1979). In addition, the highly personal practice of exchange created preference for Muslims to conduct trade with co-religionists (Chaudhuri, 1995; Kuran and Lustig, 2012). Therefore, merchants converting to Islam enjoyed substantial externalities like access to the Muslim trade network, steady trade flows, and a reduction in transaction costs. In Section 2 we provide a brief overview illustrating the role of trade in the Islamization process in various parts of the Old World.

Although the primary contribution of this study is to establish how proximity to pre-Islamic trade routes has influenced the distribution of Muslim communities in the Old World, we also explore whether the ecological similarity to the Arabian peninsula of a given region predicts the presence of Muslim communities. But which are the salient geographic features of the cradle of Islam? The Arabian peninsula has a distinct geography, mainly consisting of desert and semi-arid landscapes with a few regions of moderate fertility such as today's Yemen and other scattered oases in the interior. On the eve of Islam, frankincense, myrrh, vine, dyes, and dates were produced in these fertile pockets (Ibrahim, 1990). To capture this distinct landscape, we construct for each country/ethnic homeland the Gini coefficient of land suitability for agriculture and show that ecological similarity to the Arabian Peninsula (reflected in the degree of inequality in the potential for farming across regions) increases Muslim representation.

We discuss various explanations consistent with this less-well-known fact and show that groups residing along geographically unequal territories have a particular production structure (both historically and today) with pasture dominating the semi-arid landscape and farming taking place in the few relatively fertile regions. These differences in the underlying productive endowments may generate gains from specialization and provide a basis for trade as a means of subsistence. This is indeed the case for a cross-section of ethnographic societies we examine. So, to the extent that trade is likely to flourish when the parties involved adhere to a common code of exchange, the trade-promoting institutional framework of Islam would find likely converts across such territories.

A complementary interpretation links geographic inequality to social inequality and predation and echoes Ibn Khaldun (1377), one of the greatest philosophers of the Muslim world, who observed that a crucial factor for understanding Muslim history is the central social conflict between the primitive Bedouin and the urban society ("town" versus "desert"). The argument is that long-distance trade opportunities confer differential gains to populations residing in the relatively more fertile regions, fostering predatory behavior from the poorly endowed ones. Along the same lines, contemporary scholars have noted that when farmers and herders coexisted in absence of an institutional framework coordinating their activities, their interactions were often conflictual, disrupting trade flows across these territories (Richerson, 1996). We conjecture that Islam with its redistributive economic principles was a unifying force aimed at reining in the underlying inequality in exchange for security for the trading caravans (Michalopoulos, Naghavi, and Prarolo, 2016). The premise that

geographic inequality becomes more salient when long-distance trade opportunities arise generates an auxiliary prediction. Namely, the intensity of adoption of Islam across unequally endowed regions should increase with proximity to trade routes. This prediction is borne out in the data.

Our study belongs to a wider literature in economics that explores the interplay between the economic and political environment and (religious) beliefs and rules. Contributions include works by Greif (1994), Benabou and Tirole (2001), Botticini and Eckstein (2005, 2007), Cervellati and Sunde (2017), Guiso, Sapienza, and Zingales (2016), Platteau (2008, 2011), Rubin (2009), Becker and Woessmann (2009), and Greif and Tabellini (2010). Moreover, by focusing on the spread of a particular religion, our work is closely related to that of Cantoni (2012) who explores how proximity to Wittenberg, the birthplace of Martin Luther, influenced the diffusion of Protestantism. The evidence provided on the consistent geographic pattern followed by the Muslim world also makes contact with the studies by Engerman and Sokoloff (1997, 2002) and Acemoglu, Johnson, and Robinson (2001, 2002), among others, that stress the role of geography in shaping institutional outcomes.

The rest of the paper is organized as follows. In Section 2 we provide a historical narrative of the significance of trade for the spread of Islam. In Section 3, we discuss the data and present the empirical analysis conducted across countries and ethnic groups. In Section 4, we dig deeper into what distance to trade routes and geographic inequality reflect and outline possible explanations consistent with the uncovered evidence. Section 5 summarizes and discusses avenues for future research.

2 The Spread of Islam along Historical Trade Routes

Islam has spread at a breathless pace since the time of Muhammad. Nevertheless, the mode of expansion has differed across time and space ranging from conquests, to trade, to proselytization and migrations. During the early phase, Islam expanded mainly through conquests within a certain radius around Mecca. The initial military conquests, even if they did not entail forced conversion, eventually resulted in Muslim-majority populations occupying large swaths of land. These areas overlap with contemporary countries close to Mecca including the entire Arab World in the Middle East and North Africa, Iran, Afghanistan, and Pakistan, and slightly further away in Uzbekistan and Turkmenistan. The territories featured important trade hubs during the pre-Islamic era, particularly those along the Silk Road in Asia and the Red Sea in North Africa. Most of these lands were part of the Persian Empire, which was the largest and most important empire of the time to be conquered and concede to Islam. Famous trade hubs along the routes of the Persian Empire were Rey (in Iran), Samarkand and Bukhara (in Uzbekistan), and Merv (in Turkmenistan).

The process of Islamization farther away from the birthplace of Islam was intimately linked to trade. The Islamic world came to dominate the network of the most lucrative international trade routes that connected Asia to Europe (and by sea to North Africa). With full Muslim control of the western half of the Silk Road by mid-8th century, any long-distance exchange had to traverse Muslim lands, giving trade a central role in the further propagation of the religion. Muslim merchants carried the message of Islam wherever they traveled. This was possible because of the Muslim practise of "direct" trade, one of the most remarkable innovations of Islam. Prior to Muslim conquests, trade

was conducted by a network of local merchants who traded exclusively in their homelands. In other words, they played the role of intermediary agents with goods (often spices) being transported from one carrier to another by short journeys, creating a trade-relay. Muslims instead did not rely on intermediaries and personally travelled the entire length of the journey, crucial for the diffusion of the religion along the trade routes and at the destination. The spread of Islam was hence greatly enhanced by social contact as a consequence of trade (Miller, 1969; Wood, 2003).

On the receiving end, the new religion appealed to the local merchants because it legitimized their economic base more than most belief systems present at that time. Merchants converting to Islam had clear advantages including (i) cooperation within the Muslim trading network, (ii) valuable contacts to expand their trade, and (iii) rules governing commercial activities naturally favoring Muslims over non-Muslims (Sinor, 1990; Foltz, 1999).

Proselytization was a third factor that influenced the spread of Islam across locations most distant to Mecca. Trade routes were also important in this process as the charismatic Sufi preachers travelled along these routes to perform missionary activities. Finally, migration of Muslims (again through trade routes) and their inter-marriages at the destination also contributed to the spread of Islam along the trade routes distant from Mecca.

2.1 The Adoption of Islam by Ethnic Groups in the Vicinity of Trade Routes

The historical accounts linking trade routes and Muslim adherence across countries are indicative of their importance for the spread of Islam. Nevertheless, given the power of the state to influence its religious composition, one may wonder whether a similar nexus between proximity to trade hubs and Muslim representation exists within countries that are not religiously homogeneous. In what follows, we review the historical record on the emergence of Islam for specific countries with varying religious diversity including China, Tanzania, Mali (the location of the former Ghana Empire), Indonesia, and India. A systematic empirical analysis at the ethnic group level for each of these countries is relegated to Section 3.3.

Figures 1*a*, 1*b*, 1*c*, 1*d*, and 1*e* provide snapshots of pre-Islamic trade routes along with contemporary Muslim representation for groups located in these five regions making apparent the link between the two (see Section 3.1 below for a description of the underlying data).

2.2 Inner Asia

By the 8th century, Islam was no longer the religion of only the Arab world and had expanded geographical borders along the Silk Road. Conversions were often a result of economic considerations and the financial benefits afforded to those joining the Ummah. Even among the conquered people in Central Asia, Islam continued to gain a hearing without coercion as merchants spread the religion. Muslim traders traveled as far as the capital of the Tang dynasty, Chang'an, in the Chinese Empire. The 9th century saw the rise of Islamic kingdoms in Central Asia, especially the Samanid Empire, the first Persian dynasty after the Arab conquests. The Islamization of the nomadic Turkic peoples of Central and Inner Asia occurred during the 10th century along the trade routes. This process has

been linked mainly to their participation in the oasis-based Silk Road trade and was accelerated by the conversion and the expansion of three Turkic Muslim dynasties of the Karakhanids, the Ghaznavids, and the Seljuks (Meri and Bacharach, 2006).

The major ethnic groups close to trade routes with a substantial Muslim representation in this region are the Uyghurs, the Hui, the Kazakhs, the Kyrgyz, and the Tajiks. These ethnic groups also exist within China today and comprise the Muslim minority in the country. They are all located around Xianjiang, a vast region of deserts and mountains along the Silk Road in Northwest China.

The Uyghurs are one of the largest ethnic groups in Inner Asia, and their Islamization dates back to the Karakhanids in early 10th century, the first Turkic dynasty to convert to the new religion. The core of the Uyghurs' homeland was Kashgar, an oasis city located in the West of China near the current-day border of Tajikistan and Kyrgyzstan, which historically served as a strategic trade hub between China, the Middle East, and Europe (Roemer, 2000). The Hui people are another Muslim Chinese minority historically connected to Muslim merchants travelling along the Silk Road. Besides Xianjiang, they also live farther east in Central China. A cluster of this group can be found today in Xi'an, where they form the majority of a large Muslim community (the dark spot in the center of China in Figure 1a). Xi'an was the first city in China where Islam was introduced. (Soucek, 2000). The longest segment of the Silk Road runs across the Central Asia and Kazakhstan. The religion practiced by the majority of Kazakhs is Islam since its introduction in the region by the Arabs during the 9th century. The Kyrgyz tribes also adopted Islam as Muslim traders and then Sufi missionaries began to move out from scattered towns to the nomadic steppes, spreading Islam among the tribal groups. They are known to have adopted Islam between the 8th and 12th centuries. The Tajiks on the other hand, started converting to Islam in the late 11th century (Minahan, 2014).

2.3 East and West Africa

Islam spread through the well-established trade routes of the east coast of Africa via merchants. The earliest records for trade in East Africa indicate Greco-Roman trade down the Red Sea and along the Somali coast to the Tanzanian coast. This was followed by the trade of frankincense, myrrh, and spices with the Persian Gulf from the 2nd to the 5th century CE. Soon Zanzibar Island also became a trade hub and remained so until the 9th century CE, when Bantu traders settled on the Kenyan-Tanzanian coast and joined the Indian Ocean trade networks interacting with the Somali and Arab proselytizers. Shanga, an early Swahili town on Pate Island in the Lamu Archipelago, is a good example of early influence through Muslim traders as they built the first small wooden mosque in the region around 850 CE (Shillington, 2005). Islam was established on the Southeast coast soon after, and eventually a full-scale prosperous Muslim dynasty known for trading gold and slaves was established at Kilwa on the coast of modern Tanzania. By the 11th century CE, several settlements down the east coast were equipped with mosques, and Islam emerged as a unifying force on the coast to form a distinct Swahili identity (Trimingham, 1964).

Historical accounts suggest that the early penetration of Islam was even more effective along the caravan routes of West Africa. Trans-Saharan trade started on a regular basis during the 4th century

and presents a clear example of subsistence from trade between the people of the Sahara, forest, Sahel, and savanna (Boahen, Ajayi, and Tidy, 1966). While present since 500 CE, the significance of the trans-Saharan trade routes rose and declined over time depending on the empire in power and the security that could be maintained along the routes (Devisse, 1988). Islam was introduced through Muslim traders along several major trade routes that connected Africa below the Sahara with the Mediterranean Middle East, such as Sijilmasa to Awdaghust and Ghadames to Gao. Muslims crossed the Sahara into West Africa trading salt, horses, dates, and camels for gold, timber, and foodstuff from the ancient Ghana empire. The trade-friendly elements of Islam, such as credit or contract law, together with the information networks it helped create, facilitated long-distance trade. By the 10th century, merchants to the south of the trade routes had converted to Islam. In the 11th century CE the rulers began to convert. The first Muslim ruler in the region was the king of Gao, around the year 1000 CE. The Kanem empire (the Kanuri people), located at the southern end of the trans-Saharan trade route between Tripoli and the region of Lake Chad, followed after being exposed to Islam through North African traders, Berbers, and Arabs (Trimingham, 1962; Levtzion and Pouwels, 2000; Robinson, 2004).

2.4 South and Southeast Asia

There is ample historical evidence indicating that Arabs and Muslims interacted with India from the very early days of Islam, although trade relations had existed since ancient times. Malabar and Kochi were two important princely states on the western coast of India where Arabs and Persians found fertile ground for their trade activities. The trade on the Malabar coast prospered due to the local production of pepper and other spices. Islam was first introduced to India by the newly converted Arab traders reaching the western coast of India (Malabar and the Konkan-Gujarat region) during the 7th century CE (Elliot and Dowson, 1867; Makhdum, 2006; Rawlinson, 2003).

Cheraman Juma Masjid in Kerala is thought to be the first mosque in India. It was built towards the end of Muhammad's lifetime during the reign of the last ruler of the Chera dynasty, who converted to Islam and facilitated the proliferation of Islam in Malabar. The 8th century CE marked the start of a period of expansion of Muslim commerce along all major routes in the Indian Ocean, suggesting that the Islamic influence during this period was essentially one of commercial nature. Initially settling in Konkan and Gujarat, the Persians and Arabs extended their trading bases and settlements to southern India and Sri Lanka by the 8th century CE, and to the Coromandel coast in the 9th century CE. These ports helped develop maritime trade links between the Middle East and Southeast Asia during the 10th century CE (Wink, 1990).

The people of the Malay world have been active participants in trade and maritime activities for over a thousand years. Their settlements along major rivers and coastal areas were important means of contact with traders from the rest of the world. The strategic location of the Malay Archipelago at the crossroad between the Indian Ocean and East Asia, and in the middle of the China-India trade route, aided the rapid development of trade in the region (Wade, 2009). In particular, the Srivijaya kingdom (7th -13th century CE) on the straits of Malacca attracted ships from China, India, and

Arabia plying the China-India trade routes by ensuring safe passage through the Straits of Malacca (Andaya and Andaya, 1982).

Similar to those in Africa, rulers in Southeast Asia often converted to Islam through the influence of Muslim merchants who set up or conducted business there. While the landed Hindu-Buddhists were content to let the trade come to them, the Muslim merchants, lacking a fixed land base, made their profits from trade at the location of exchange. Consequently, the people of Southeast Asia began to accept Islam and create Muslim towns and kingdoms. By the late 13th century CE, the kingdom of Pasai in northern Sumatra had converted to Islam. At the same time, the collapse of Srivijayan power at the end of the 13th century CE drew foreign traders to the harbors on the northern Sumatran shores of the Bay of Bengal, safe from the pirate lairs at the southern end of the Strait of Malacca (Houben, 2003; Ricklefs, 1991). Around 1400 CE, a new kingdom was established in Malacca (on the north shore of the Malacca Strait). The rulers of Malacca soon accepted Islam in order to attract Muslim and Javanese traders to their port by providing a common culture and offering legal security under Islamic law (Holt, Lambton, and Lewis, 1970; Esposito, 1999). Finally, the Bugis, an ethnic group along Java's northern coast adopted Islam later in the 16th century CE when Muslim proselytizers from West Sumatra came in contact with the people of this region who conducted trade (Mattulada, 1983).

3 Empirical section

3.1 The Data Sources

The historical overview vividly illustrates the importance of pre-existing trade routes for the diffusion of Islam but also suggests the beneficial impact of Islam on the further expansion of the trade network. To make sure we capture the first part of this two-way relationship, we construct our main explanatory variable by measuring the distance between the relevant unit of analysis (a country or an ethnic homeland) and the closest historical trade route or port before 600 CE, reflecting the structure of trade flows already present in the Old World in the eve of Islam.³

The location of trade routes is outlined in Brice and Kennedy (2001) whereas the location of ancient ports and harbors is taken from the work of De Graauw, Maione-Downing, and McCormick (2014) who collected and identified their precise locations. The result is an impressive list of approximately 2,900 ancient ports and harbors mentioned in the writings of 66 ancient authors and a few modern authors, including the Barrington Atlas. We complement the pre-600 CE routes mapped in Brice and Kennedy (2001) with information on the Roman roads identified in the Barrington Atlas (McCormick, et al., 2013). Finally, we also extend the trade network up to 1800 CE, digitizing the relevant information from Brice and Kennedy (2001), and supplementing it with routes within Europe,

³All distance measures are constructed in the following manner. We generate a grid of 0.5 by 0.5 decimal degrees and intersect the resulting cells with the country and homeland boundaries. We then calculate the distance from the centroid of each cell within the country/homeland to the nearest feature. To arrive at a single distance term for each unit of aggregation, we take the mean value of the distances across the cells that fall within the country/ethnic homeland borders. This procedure is more accurate than using only the country's or homeland's centroid. Moreover, using the minimum or the maximum distance instead of the mean distance to the attributes of interest delivers noisier coefficients.

Southeast Asia, West Africa, and China mapped in O'Brien (1999) during the same time period. We expect these data to be useful to other researchers. See Figures 2*a* and 2*b* for the reconstruction of the pre-Islamic and pre-1800 CE trade network, respectively.

In the cross-country analysis, the dependent variable employed is the fraction of Muslims in the population as early as 1900 CE reported by Barrett, Kurian, and Johnson (2001). For the ethnic group analysis, the dependent variable is the fraction of Muslims and of other religious denominations in 2005 from the World Religion Database (WRD).⁴ These estimates are extracted from the World Christian Database and are subsequently adjusted based on three sources of religious affiliation: census data, demographic and health surveys, and population survey data.⁵ In absence of historical estimates of Muslim representation at an ethnic group level, we are constrained in using contemporary data. Reassuringly, country-level Muslim representation derived from the group-specific estimates of the WRD are highly correlated (0.93) with the respective country statistics on Muslim adherence in 1900 CE.

Information on the location of ethnic groups' homelands is available from the World Language Mapping System (WLMS) database. This dataset maps the locations of the language groups covered in the 15th edition of the Ethnologue (2005) database. The location of each ethnic group is identified by a polygon. Each of these polygons delineates the traditional homeland of an ethnic group; populations away from their homelands (e.g., in cities, refugee populations, etc.) are not mapped. Also, the WLMS (2006) does not attempt to map immigrant languages. Finally, ethnic groups of unknown location, widespread ethnicities (i.e., groups whose boundaries coincide with a country's boundaries) and extinct languages are not mapped and, thus, not considered in the empirical analysis. The matching between the WLMS (2006) and the WRD is done using the unique Ethnologue identifier for each ethnic group within a country.⁶

To capture how similar the ecology of a given region is to that of the Arabian Peninsula, we construct the distribution of land quality and, in turn, the Gini coefficient of regional land potential for agriculture across countries and homelands. Under the assumption that land quality dictates the productive capabilities of a given region, populations on fertile areas would engage in farming whereas pastoralism would be the norm in poorly endowed regions (see more on this in Section 4). In the absence of historical data on land quality, we use contemporary disaggregated data on the suitability of land for agriculture to proxy for regional productive endowments. The global data on current land quality for agriculture were assembled by Ramankutty et al. (2002) to investigate the effect of future climate change on contemporary agricultural suitability and have been used extensively in the recent

⁴WRD classifies as Muslims the followers of Islam in its two main branches (with schools of law, rites or sects): Sunnis or Sunnites (Hanafite, Hanbalite, Malikite, Shafite) and Shias or Shiites (Ithna Ashari, Ismaili, Alawite, and Zaydi); also Kharijite and other orthodox sects; reform movements (Wahhabi, Sanusi, Mahdiya); also heterodox sects (Ahmadiya, Druzes, Yazidis); but excludes syncretistic religions with Muslim elements and partially Islamized tribal religionists.

⁵Hsu et al. (2008) show that the country level estimates for Muslim representation in WRD are highly correlated (above 0.97) with similar statistics available from World Values Survey, Pew Global Assessment Project, CIA World Factbook, and the U.S. Department of State. At the ethnic group level, there are no comparable statistics.

⁶For some language groups in WLMS (2006) the WRD offers information at the subgroup level. In this case the religious affiliation is the average across the subgroups.

literature in historical comparative development. Each observation takes a value between 0 and 1 and represents the probability that a particular grid cell may be cultivated.⁷

Finally, we combine anthropological information on ethnic groups from Murdock (1967) with the Ethnologue (2005), enabling us to examine the pre-colonial societal and economic traits of Muslim groups. We discuss these two datasets in more detail as we introduce them to our analysis.

3.2 Cross-Country Analysis

We start by investigating the relationship between distance to trade routes in the Old World and Muslim adherence across modern-day countries. The cross-country summary statistics and the corresponding correlation matrix of the variables of interest are reported in Appendix Table 1.

To estimate how proximity to trade routes shapes Muslim adherence we adopt the following OLS specification:

$$\% \text{ Muslim } 1900_i = \beta_0 + \beta_1 \text{Distance to Trade Routes}_i + \beta_2 \mathbf{X}_i + \nu_i \quad (1)$$

where $\% \text{ Muslim } 1900_i$ is the fraction of the population in country i adhering to Islam in 1900 CE.⁸

In Column 1 of Table 1, we report the univariate relationship between distance from trade routes and Muslim adherence. The coefficient is economically and statistically significant. Across modern-day countries variation in the distance to pre-Islamic trade routes accounts for roughly 9% of the observed variation in Muslim representation. The magnitude of the estimated coefficient, moreover, suggests that a country located 1,000 kilometers farther from the 600 CE trade routes has 15% lower Muslim representation. Naturally, one may wonder whether this association remains robust to other possible determinants of Muslim adherence that may be correlated to distance to trade routes. In Column 2, we add a series of distance terms that may be potential confounders. The literature reviewed in Section 2 unequivocally suggests that proximity to Mecca is likely to be a strong predictor for the spread of Islam, and this is indeed what we find. The precisely estimated coefficient on distance to Mecca suggests that countries that are 1,000 kilometers closer to Mecca see a 7% increase in their Muslim share, and countries further away from the equator are less likely to be Muslim. Distance to the coast by itself does not significantly affect Muslim representation. These three additional location attributes significantly increase the predictive power of the empirical model, the R^2 jumps to 23%; nevertheless, the coefficient of interest only slightly declines and remains precisely estimated.

In the rest of the Columns of Table 1, we add additional geographic variables. The goal is twofold. First, to make sure that the uncovered relationship between distance to trade routes and Muslim adherence is not driven by some other geographic factor, and second, and perhaps more

⁷In the online Appendix, we discuss in detail the components of the land quality index and present the sources of the data used in the empirical analysis.

⁸We focus on countries with at least three regional observations of land quality to ensure that our findings are not driven by countries with limited regional coverage. Using the Muslim representation in 2000 as the dependent variable, the coefficients of interest are larger and more precisely estimated. Presumably this is because earlier estimates of religious affiliation are noisier.

importantly, in doing so, we attempt to shed light on the geographic covariates of Islam. Given the recent interest among growth economists on the environmental determinants of comparative development, the list of potential geographic candidates is long. So, our choice of variables is disciplined in the following manner. Since we are interested in exploring whether a given region’s ecological similarity to the Arabian peninsula predicts the presence of Muslim communities, we construct the Gini coefficient of land suitability for agriculture using the data from Ramankutty et al. (2002).

The following example may help illustrate the type of geographies that this measure reflects. Uzbekistan and Poland are both equally close to pre-Islamic trade routes (approximately 190 kilometers) but have very different ecologies. On the one hand, less than 10% of Uzbekistan’s territory lies in river valleys and oases that serve as cultivable land, whereas the rest of the country is dominated by the Kyzyl Kum desert and mountains. In our data, the Gini coefficient of land quality is estimated to be 0.59 (82nd percentile) with an average land quality of 0.25. On the other hand, Poland has a much more homogeneous geography in terms of farming potential with a Gini coefficient of 0.16 (30th percentile) and an average land suitability of 0.56. As of 1900 CE, Uzbekistan was 98% Muslim whereas there were no Muslims in Poland. These stark geographic differences across Muslim and non-Muslim countries are readily visible in the our sample. Out of the 127 countries in the Old World, those 35 (92) that have a Muslim absolute majority (minority) have median land quality equal to 0.22 (0.50) and median Gini coefficient in land quality of 0.54 (0.20). In Column 4 of Table 1, we add both of these geographic indexes in logs to our benchmark specification. The estimated coefficient on proximity to pre-Islamic trade routes remains qualitatively and quantitatively intact. Moreover, the estimates suggest that low land suitability for agriculture and high inequality in the spatial distribution of this scarce factor are strongly predictive of the presence of Muslims across countries. Adding these two features in the regression increases the R^2 by 25 percentage points revealing the importance of geographic features in the spread of Islam. One may naturally wonder what potential mechanisms are behind this strong associations. We will return to this question in Section 4.

In the rest of the columns in Table 1, we check the robustness of our findings. Specifically, in Column 4, we add four more geographic traits. The log area of each country, the log of terrain ruggedness, an indicator reflecting the presence of a desert, and an indicator reflecting whether a country has any irrigation potential.⁹ These geographic variables are chosen for the following reasons. First, Bulliet (1975) observed that Arab armies had a comparative advantage over desert terrain. In our sample of 127 countries, 38 feature some desert. Moreover, Bentzen, Kaarsen, and Wingender (2016) show that Muslim countries have higher irrigation potential and the latter may be correlated both with proximity to trade routes and inequality in the spatial distribution of land quality across cells within a country. Finally, ruggedness is controlled for as it is likely that more rugged countries limit the ability of foreign powers to penetrate them, and it also seems plausible that ruggedness is associated with the quality of land and trade routes (Chaney and Hornbeck, 2016). Adding these controls neither changes the magnitude nor the precision of the estimates of our main explanatory

⁹We follow Bentzen, Kaarsen, and Wingender (2016) and define the irrigation potential of an area as land that is classified in irrigation Impact Class 5. Impact Class 5 are those cells where irrigation can more than double agricultural yields. Out of the 127 countries, 72% have some irrigation potential whereas 28% of countries feature no such cells.

variables. Among these new covariates, the only consistent predictor of Muslim representation is the potential for irrigation in line with Bentzen, Kaarsen, and Wingender (2016). Finally, in Column 5 we add continental fixed effects to account for the broad geographic and historical differences between the continental masses finding similar results. Figure 3 plots non-parametrically the relationship between Muslim representation and distance to the pre-Islamic trade network after partialling out the covariates included in Column 5.¹⁰

3.3 Cross-Ethnic-Group Analysis

The evidence so far reveals a strong cross-country association between Muslim representation and proximity to pre-Islamic trade routes as well as an unequal distribution of land endowments. However, the spread of Islam is a historical process that predated the emergence of modern nation states. Moreover, the historical record is replete with examples of current countries actively influencing their religious composition by promoting or demoting specific religious identities. Would the cross-country patterns survive if we were to account for the idiosyncratic historical legacies of contemporary states? To answer this we look at the religious affiliations of ethnic groups within countries. This allows us to control for country-specific constants and thus produce reliable estimates of the impact of trade routes on Muslim adherence.

In Appendix Table 2 Panel A, we report the summary statistics of the main variables employed in the cross-ethnic-group analysis.¹¹ An average ethnic group in the Old World has 21% of its population adhering to Islam in 2005, is 5,230 kilometers from Mecca, and 1,345 kilometers from trade routes before 600 CE. Appendix Table 2 Panel B shows the raw correlations among the main variables of interest. Ethnic-specific Muslim representation is negatively related to distance to Mecca ($\square 0.24$) and distance to trade routes in 600 CE ($\square 0.22$).

We adopt the following specification:

$$\% \text{ Muslim in } 2005_{i,c} = \beta_0 + \beta_1 \text{Distance to pre-600CE Trade Routes}_{i,c} + \beta_2 \mathbf{X}_{i,c} + \delta_c + v_{i,c}, \quad (2)$$

where δ_c represents the country-specific fixed effects.¹²

Before showing the results for all groups across the Old World, and motivated by the historical accounts summarized in Section 2, in Table 2 we report bivariate regressions linking distance to pre-600 CE trade routes to contemporary Muslim adherence across linguistic groups within specific countries. In Columns 1, 2, and 3, we look at the religious composition of language groups in China, Mali (the location of the ancient Ghana empire), and Tanzania, respectively. Within each of these countries with varied historical legacies, and as foreshadowed by our early discussion, proximity to trade routes is a systematic predictor of Muslim communities. In Column 4, we focus on Indonesia,

¹⁰We follow Hsiang (2013) to visually display the uncertainty of the regression estimates in Figures 3 and 4.

¹¹Similar to the cross-country regressions, we focus on ethnic groups with at least three regional land quality observations. Using all ethnic groups irrespective of the underlying geographic coverage does not change the results.

¹²The results presented here are OLS estimates with the standard errors clustered at the country level. Adjusting for spatial autocorrelation following Conley (1999) delivers more conservative standard errors.

the country with the largest Muslim population worldwide. Across the 615 linguistic groups mapped by the Ethnologue, variation in the proximity of these homelands to pre-Islamic trade routes accounts for almost a quarter (22%) of the observed variation in contemporary Muslim adherence. In Column 5 we show that a similar pattern holds for India, a country where although Muslims are a minority they nevertheless represent the third-largest Muslim population across countries. In what follows, instead of showing country-specific estimates we use the entire sample of linguistic groups across the Old World to assess this link.

To facilitate comparison across the different levels of analysis, the layout of Table 3A mimics that of Table 1. The pattern found in the cross-country analysis resurfaces in the cross-ethnicity sample. The difference between Columns 1 and 2 in Table 3A is that in the latter we include country-specific constants. By doing so, the coefficient on the proximity to pre-Islamic trade routes increases considerably. Within modern-day countries, ethnic groups whose historical homelands are closer to the trade routes before 600 CE experience a significant boost in their Muslim representation. Namely, a 1,000-kilometer increase in the former decreases Muslim representation by 17 percentage points. Columns 3 to 5 confirm the pattern obtained in Columns 2 to 4 of Table 1. Regions closer to pre-Islamic trade routes, characterized by overall low land quality interspersed with pockets of fertile land are more likely to be populated by Muslim communities today. One noteworthy difference between the two levels of aggregation is that in the cross-group sample proximity to Mecca is now a reliable and precisely estimated correlate of Muslim adherence. In Figure 4, we graph non-parametrically the association between Muslim representation across groups and distance to the pre-Islamic routes after partialling out all covariates included in Column 5 of Table 3A.

Groups of people coming under the direct rule of a Muslim empire might face incentives for converting to Islam related to social mobility (Bulliet, 1979), a career within a Muslim bureaucracy (Eaton, 1996), or lower tax rates (Chaney, 2008). For example, the lower tax rates granted to Muslims over non-Muslims within Muslim Empires or the status achieved by switching to the ruler's religion might differentially affect conversion rates. Likewise, instances of forced conversion, religious persecution during the Muslim expansion, or Arab migration movements within the Muslim empires might have shaped the observed religious affiliation. Hence, in Columns 1 and 2 of Table 3B, we divide the ethnic groups based on whether they have been within a Muslim empire as classified by Iyigun (2010). An ethnic group is considered to be outside a Muslim empire if the country to which it belongs today has never been part of a Muslim empire. Both the negative relationship of Muslim adherence and distance to trade routes and the positive link with geographic inequality remain significant outside the former Muslim empires.

It is clear that Europe traded with the Muslim world for centuries without large-scale conversions, indicating that there may be other factors at play than just access to the Islamic trade networks. Considering that monotheism was an attractive ideology compared to polytheism, regions outside the Muslim empires where monotheism was already present should be less receptive to the spread of Islam along trade routes. To explore this prediction, in Columns 3 and 4 of Table 3B, we focus on ethnic groups outside Muslim empires, further distinguishing between regions that were

already monotheistic by 1050 CE as classified by O’Brien (1999). Column 3 shows that limiting the sample to polytheistic areas during the diffusion of Islam, distance to trade routes is more precisely estimated. On the contrary, in Column 4 among the 172 groups where Christianity and Judaism were present by 1050 CE, proximity to trade routes negatively impacts Muslim representation suggesting that regions where monotheism was already in place found adherence to the Islamic institutional complex and access to the Muslim trade networks less beneficial.

The findings in Table 3B also raise the question whether the link between trade and religious adherence is particular to Islam. We tackle this issue by asking whether the identified relationship between Muslim representation and distance to trade routes systematically holds for other major religions. To facilitate comparisons in Column 1 of Table 4, we replicate Column 5 of Table 3A where the dependent variable is the fraction of Muslims. In Columns 2, 3, and 4, we use as a dependent variable the percentage of people within an ethnic group adhering to three other major religions i.e., Christianity, Hinduism, and Buddhism, respectively. Lastly in Column 5, we use the fraction of the population adhering to local animistic, or shamanistic religions, known as Ethnoreligionists. The spatial distribution of these other religions does not seem to be influenced by the ancient trade routes. If anything Christians seem to be located further away from the pre-Islamic routes, a pattern mainly driven by groups in Asia and Africa.

These findings highlight the, until now, neglected crucial role of trade in shaping the differential adherence to Islam across ethnic groups and shed new light on the geographical origins and spatial distribution of Muslims within modern-day countries.

Robustness Checks In the Appendix, we offer a series of sensitivity checks for the main pattern established in Tables 1 and 3A. First, in Columns 1 and 4 of Appendix Table 3, we replicate the specifications reported in Columns 5 of Tables 1 and 3A with the difference being that we replace the dependent variable with a dummy equal to one for countries/groups where Muslims are the absolute majority. The estimated coefficients suggest that a 1,000-kilometer increase in the distance to pre-Islamic trade routes decreases the probability of finding a country (group within a country) with a Muslim majority by 16% (12%). Second, in Columns 2 and 5, we explore the non-linearity of proximity to pre-Islamic trade routes to capture the plausibly diminishing role of distance for regions further away from the trade hubs. The quadratic term on distance to pre-600 CE trade routes alternates in sign across levels of aggregation and is highly insignificant. This can be rationalized in different ways. First, this pattern may reflect the fact that despite our efforts to collect a comprehensive set of indicators regarding the presence of pre-Islamic regional trade opportunities (manifested in routes, roads, and ports) we are fully aware that measurement error in the mapping of ancient routes is non-trivial.

Second, an alternative interpretation of the non-significance of the quadratic term is that Muslims starting from the pre-600 CE trade network and continuing over the next 1,000 years until the beginning of the European colonialism significantly expanded trade routes, adding myriad new connections and reaching vast areas in Sub-Saharan Africa and Asia. This implies that the network

relevant for discerning a diminishing role of the proximity to trade routes on the spread of Islam is not the pre-600 CE one but the routes on the eve of the colonial era. To explore the empirical validity of this conjecture, we expanded our trade-routes dataset with information up to 1800 CE. Columns 3 and 6 of Appendix Table 3 clearly show that Muslim representation both across countries and across-groups within countries has a concave relationship with proximity to trade. Further increasing distance to pre-industrial trade hubs for regions already far from them has little bearing on their Muslim adherence. A note of caution is in order. Using data on trade routes after 600 CE implies that the empirical relationship cannot be unequivocally interpreted as it clearly reflects a two-way interplay from initial trade routes to the spread of Islam and from the latter to the further development of the trade network.

4 Mechanisms

So far, we have established a strong positive association between proximity to ancient trade routes and contemporary Muslim adherence and a positive link between geographically unequal regions and the presence of Muslim communities. In this section, we do two things. First, we investigate whether a group’s proximity to trade routes predicts its reliance on trade. Second, we open the black box of what inequality in land quality reflects, using contemporary data on land use and historical data on the subsistence pattern across groups.

Historical Trade Routes and Historical Dependence on Trade Is it the case that groups closer to trade routes are more likely to engage in trade? Historical data on dependence on trade are notoriously difficult to come by. To the best of our knowledge, the only dataset that records the extent of trade at the group level in the pre-industrial era is the Standard Cross Cultural Sample (SCCS), which reports detailed information for 186 historical societies worldwide.¹³ The entry we are interested in is the share of the overall subsistence needs that comes from trade (*v819*). Across the 121 societies in the Old World we compute the distance from their centroids (reported in the SCCS) to the closest trade routes before 600 CE and in 1800 CE.

In Table 5, we report the results. The coefficient estimate on distance to the pre-600 CE trade routes is negative but statistically insignificant. The absence of significance is easy to understand. All but four of the SCCS societies were recorded by ethnographers after 1750 CE, which implies that their effective exposure to trade was that of the trade network as of 1800 and not the one of 600 CE. Indeed, when we replace the distance to 600 CE trade routes with the one of 1800 CE, a strong negative relationship emerges. Groups closer to the 1800 CE trade network consistently derive a larger share of subsistence from trade. Examples include the Javanese in Indonesia and the Rwala Bedouin, a large Arab tribe of northern Arabia and the Syrian Desert. Both groups are a mere 70 kilometers away from the trade routes and ports in 1800 CE and derived as much as 25% of

¹³The SCCS comprises ethnographically well-documented societies, selected by George P. Murdock and Douglas R. White, published in the journal *Ethnology* in 1969, and followed by several publications that coded the SCCS societies for many different types of societal characteristics.

their subsistence from trade. In Column 3, we drop the four SCCS societies that were documented by ethnographers before 1750, namely the Babylonians, the Hebrews, the Khmer, and the Romans, finding a similar pattern.

What Does Land Inequality Capture? Our motivation for constructing the inequality in the distribution of agricultural potential across regions is that this statistic reflects the ecological conditions of the Arabian peninsula, the birthplace of Islam. Indeed, across the 36,582 land quality observations in the Old World among the 1,285 cells that belong to the Arabian Peninsula, the Gini coefficient of land quality is 0.87 with an average land quality of 0.03 whereas the statistics for the rest of the regions are 0.57 and 0.32, respectively.¹⁴ In a stage of development when land quality dictates the productive structure of the economy, one would expect societies along unequally endowed territories to have a specific productive structure with herding dominating the arid and semi-arid regions and farming taking place in the few fertile ones. This was certainly the economic landscape of the pre-industrial Arabian peninsula. Below, we verify this link using historical and contemporary data across groups on the dependence on pastoralism and agriculture.

The data on land use come from Ramankutty et al. (2008) and provide at the grid level of 0.083 by 0.083 decimal degrees estimates on the share of land allocated to pasture and agriculture in 2000. We aggregate this information at the homeland level to obtain a measure of how tilted land allocation is towards pasture. The data on the historical traits across groups come from Murdock (1967) who produced an Ethnographic Atlas (published in twenty-nine installments in the anthropological journal *Ethnology*) that coded around 60 variables, capturing cultural, societal, and economic characteristics of 1,270 ethnicities around the world. We linked Murdock’s Ethnographic Atlas groups to the Ethnologue’s linguistic homelands in the Old World. These two datasets do not always use the same name to identify a group. Utilizing several sources and the updated version of Murdock’s Atlas produced by Gray (1999), we were able to identify the pre-colonial traits as recorded in the Ethnographic Atlas for 1,210 linguistic homelands in the Ethnologue (2005).¹⁵

In the first three columns of Table 6, the dependent variable is the log ratio of pastoral over agricultural area in 2000 across linguistic homelands.¹⁶ All columns include country-specific constants. Within countries, groups residing along poor and unequally endowed regions display a larger land allocation towards animal husbandry compared to farming. Adding in Column 2 the geographic variables discussed above does not change the pattern. The only additional finding is that groups located in rugged regions are also more dependent on pastoralism than agriculture. In Column 3, we verify that Muslim groups today live in homelands that display this particular type of land use, i.e., a land allocation skewed against agriculture and in favor of pastoral activities.

Is it the case that groups residing in habitats where farming today is limited and herding

¹⁴The Arabian Peninsula consists of the following 9 contemporary countries: Yemen, Oman, Iraq, Jordan, Qatar, Bahrain, Kuwait, Saudi Arabia, and the United Arab Emirates.

¹⁵Unlike the SCCS dataset, Murdock’s Ethnographic Atlas does not have information on trade-related traits.

¹⁶Note that the number of groups in Columns 1 to 3 is 2,845 instead of the 3,181 covered in Table 3. This is because for 336 linguistic homelands the allocation of land either towards farming or towards pasture in 2000 is 0 so the log of their ratio is not well defined.

significantly more common had a similar lopsided type of subsistence in the pre-industrial era? This is what we ask in Column 4 where the dependent variable is the log ratio of the share of subsistence derived from animal husbandry over agriculture as recorded in the Ethnographic Atlas. Groups that today allocate more of their land towards pastoralism also used to derive more of their livelihood from similar activities in the past, suggesting the persistence in the structure of production across groups.

In Columns 5 to 7, we replicate the pattern shown in Columns 1 to 3 with the difference being that on the left hand side of the equation, instead of the contemporary land allocation, we use the log ratio of the historical subsistence share from animal husbandry relative to agriculture. Groups residing in homelands of limited potential for agriculture dotted with few pockets of fertile land also used to obtain more from herding and less from agricultural products in the pre-colonial era. Adding the geographical covariates in Column 6 reveals that the presence of desert and of regions with irrigation potential also skew subsistence towards animal husbandry. Finally, in Column 7, we show that indeed Muslim groups are those that historically were more dependent on pastoralism and less on farming, corroborating one of the long-standing themes in the environmental history of Islamic Eurasia and North Africa, namely, the interface between the steppe and the sown (Mikhail, 2012).

In this environment where each area specializes in its comparative advantage (farmers on the fertile pockets and herders on the relatively arid ones), a larger geographical Gini coefficient may correspond to larger potential gains from trade. Richerson (1996), for example, observes that "despite the emphasis on animals, most herders are dependent on crop staples for part of their caloric intake ... procured by client agricultural families that are often part of the society and the presence of specialized tradesmen that organize the exchange of agricultural products for animal products." This suggests that an exchange economy may be more vibrant within a community of many herders and few farmers. To shed light on this conjecture, we rely on the Standard Cross Cultural Sample (SCCS). Specifically, in Column 8 of Table 6, we ask whether societies relying more on pastoralism relative to agriculture also derive more of their subsistence needs from trade; across the 186 ethnographic societies worldwide, this is indeed the case. Overall, the results in Table 6 reveal how the specific geographic endowments of Muslim homelands give rise to a distinct specialization pattern: a pastoral economy with few farmers where trade is important.

Why Ecological Similarity to the Arabian Peninsula Matters for the Spread of Islam At first blush, showing that Muslim regions are ecologically similar to the birthplace of Islam, i.e., the Arabian peninsula, is consistent with various interpretations.

First, Michalopoulos (2012) argues that cultural groups have location-specific human capital derived from the type of geography they inhabit. Hence, when members of such groups leave their group's homeland they are likely to target regions that are productively similar to their ancestral territories to ensure transferability of their skills. For example, early farmers and pastoralists moving out of the Fertile Crescent on the eve of the Neolithic Revolution follow this pattern of dispersal, i.e., farmers moving to land suitable for agriculture and herders targeting landscapes appropriate for

animal husbandry. One may apply a similar reasoning to the diffusion of Islam. Since the productive toolset of early Muslims was fine-tuned to the arid landscapes of the Arabian Peninsula, seeing Muslims migrating to lands similar to their ancestral regions can be easily rationalized.

Second, Bulliet (1975) convincingly argues that one crucial element for understanding the spread of Muslim empires is the use of the camel that provided the Arab armies a military edge over their rivals. So, terrains suitable for deploying the camel would be more easily conquered whereas others would remain beyond the reach of Muslim rulers. Chaney (2012) shows empirically how a desert ecosystem is indeed predictive of the Arab conquests and Muslim adherence across countries today.

Both of these arguments are very relevant for understanding the spread of Islam in places that experienced either a Muslim conqueror and/or a significant influx of Muslims. Nevertheless, in many of the cases discussed in the historical section, Islam was often voluntarily adopted by the local rulers in absence of significant Muslim population movements. What arguments may then rationalize the voluntary adoption of Islam across geographically unequal regions? Below we offer some tentative explanations.

Islam, Trade, and Unequal Geography We offer two complementary accounts that highlight the pro-trade stance of Islam. The first derives from the observation that historically within geographically unequal societies trade is likely to play an important role for subsistence (see Column 8 of Table 6). Hence, to the extent that Islam offered an institutional framework promoting exchange, groups across geographically unequal territories would have an added incentive to convert. Several Islamicists have stressed the pro-trade elements of the Muslim institutional complex. According to Cohen (1971), "[Islam is a] blue-print of a politico-economic organization which has overcome the many basic technical problems of trade." Trade called for new types of economic organization that required stronger authority (Davidson, 1969). An important advantage of Islam with respect to previous arrangements was the fact that it offered a powerful ideology with built-in sanctions that created non-material interest in holding to the terms of contracts (Ensminger, 1997). This common platform allegedly generated trust and contributed to the reduction in transaction costs while doing business with fellow Muslims.

Second, in our companion paper, Michalopoulos, Naghavi, and Prarolo (2016), we advance theoretically a related hypothesis where the Islamic economic rules arise to mitigate social tensions across Arabia's tribes exposed to long-distance trade opportunities during the 7th century CE. In a nutshell, we argue that trade diversion over Arabia created new potential economic benefits for the scattered oases by transforming them to trade hubs providing services to the trading community (Watt, 1961). Caravans, however, for thousands of miles were constantly exposed to raids by the Bedouins, who made up a considerable fraction of the population at that time (Berkey, 2003). In this historical backdrop, we hypothesize that Islamic rules were devised in response to the costly nature of predation between the Bedouins and oasis dwellers, offering a framework whose redistributive

principles safeguarded exchange over numerous and heterogeneous tribal territories (Bogle, 1998).¹⁷

This view of Islam as an institutional package engineered to allow the flourishing of long-distance trade across unequally endowed regions generates an auxiliary prediction: Islam should be able to gain a hearing more readily across unequal territories close to trade routes. Empirically, this can be tested by adding the interaction between distance to trade routes and ports and the degree of geographic inequality. Columns 1 and 2 of Table 7 are country-level regressions and Columns 3 and 4 focus on ethnic groups within countries. Across both units of aggregation the interaction term enters with a negative sign and it is statistically significant.¹⁸ The point estimates in Specification 1 suggest that the effect of land inequality on Muslim adherence across countries becomes insignificant for countries farther than 650 kilometers from the trade routes as of 600 CE, pointing to the differential incentives to convert to Islam among geographically unequal regions in the vicinity of historical trade routes.

Although the decline in the predictive power of inequality in agricultural endowments farther from trade routes is consistent with the proposed view that Islamic rules were better suited for geographically unequal communities close to the trade network, it is far from a proof. To establish that converting to Islam indeed facilitated trade and changed the groups' institutional framework – increasing redistribution and mitigating conflict – one would need data before and after Islamization. Cross-sectional variation only cannot shed light on whether converting to Islam changed the underlying institutional structure, or if groups that already had traits similar to what the Islamic scriptures prescribed found it easier to become Muslim. Taking these qualifiers into account in the Appendix we show that Muslim groups are different from non-Muslim ones in some of their institutional and societal arrangements. Specifically, in Appendix Table 4 we show that Muslim societies as recorded by ethnographers in the Old World are more likely to be politically centralized, harbor beliefs in moral gods, and follow equitable inheritance rules. Moreover, a strong link between an unequal geography and social stratification is present across non-Muslim groups but muted across Muslim ones.

5 Conclusion

In this study we examine the historical roots of Muslim adherence within as well as across countries. First, we digitize and combine a multitude of historical sources, to construct detailed proxies of ancient, pre-Islamic trade routes, harbors, and ports and show that regions in the vicinity of such locations are systematically more likely to be Muslim today. We view this finding as offering large-scale econometric support to a widely held conjecture among prominent Islamicists like Lapidus (2002), Berkey (2003), and Lewis (1993), and complement this empirical regularity with historical accounts

¹⁷The link between the structure of production, institutional formation and religion can be readily glimpsed in the works of Ibn Khaldun (1377) and Marx (1833 [1970]). Ibn Khaldun (1377) notes that "it is the physical environment-habitat, climate, soil, and food, that explain the different ways in which people, nomadic or sedentary, satisfy their needs, and form their customs and institutions," whereas Marx (1833 [1970]) highlights that religion, like any other social institution, is a by-product of the society's productive forces.

¹⁸Note that when we use the trade network before 1800 CE the direct effect of distance to trade routes also reflects reverse causality. Nevertheless, irrespective of who set up the routes, we may still explore whether it is unequally endowed regions that are differentially impacted.

illustrating the importance of trade contacts in the process of Islamization of various prominent locations in Africa and Asia.

Second, we establish that Muslim communities tend to reside in habitats that are ecologically similar to those of the Arabian Peninsula, the birthplace of Islam. Specifically, we show that Muslim homelands are dominated by arid and semi-arid lands where animal husbandry is the norm, and dotted with few niches of fertile land where farming is feasible. Overall, a poor and unequal distribution of agricultural potential predicts Muslim adherence. We discuss the various mechanisms that may give rise to this phenomenon and offer evidence consistent with the view of Islam as an institutional package appropriate for societies residing along unequally endowed regions in the vicinity of trade opportunities.

The empirical analysis is conducted across countries and across ethnic groups within countries. Exploring within-country variation is crucial in our context given the intimate relationship between country formation and religious identity. Across both levels of aggregation, there is a robust link between proximity to pre-Islamic trade routes, geographic inequality, and Muslim representation. The identified pattern is unique to the Muslim denomination and it obtains for regions that historically have not been part of a Muslim empire. Overall, the empirical analysis highlights the prominent role of history in shaping the contemporary spatial distribution of Muslim societies.

We view these findings as a stepping stone for further research. For example, focusing on specific regions where historical data may be available, one may explore time variation in the speed at which Islam made inroads to the respective communities. Moreover, one element we do not touch upon is why religious beliefs – once adopted – persist over time. Insights from the rapidly growing theoretical and empirical literature on the persistence of beliefs and attitudes may shed light on this phenomenon (see Bisin and Verdier, 2000; and Voigtlander and Voth, 2012). Finally, having identified some of the forces behind the formation and spread of Islam, one might examine the economic and political consequences for the short-run and the long-run development of the Muslim world (see Michalopoulos, Naghavi, and Prarolo, 2016). We plan to address some of these issues in subsequent research.

References

- ACEMOGLU, D., S. JOHNSON, AND J. A. ROBINSON (2001): “The Colonial Origins of Comparative Development: An Empirical Investigation,” *American Economic Review*, 91(5), 1369–1401.
- (2002): “Reversal Of Fortune: Geography And Institutions in the Making of the Modern World Income Distribution,” *Quarterly Journal of Economics*, 107(4), 1231–1294.
- ANDAYA, B., AND L. ANDAYA (1982): *A History of Malaysia*. Macmillan, London.
- BARRETT, D. B., G. T. KURIAN, AND T. M. JOHNSON (2001): *World Christian Encyclopedia, 2nd Edition*. Oxford University Press, Oxford.
- BARRO, R., AND R. M. MCCLEARY (2003): “Religion and Economic Growth Across Countries,” *American Sociological Review*, 68(5), 760–781.
- (2006a): “Religion and Economy,” *Journal of Economic Perspectives*, 20(2), 49–72.
- (2006b): “Religion and Political Economy in an International Panel,” *Journal for the Scientific Study of Religion*, 45(2), 149–175.
- BECKER, S. O., AND L. WOESSMANN (2009): “Was Weber Wrong? A Human Capital Theory of Protestant Economic History,” *The Quarterly Journal of Economics*, 124(2), 531–596.
- BENABOU, R., AND J. TIROLE (2001): “Willpower and Personal Rules,” *Journal of Political Economy*, 112(4), 848–886.
- BENTZEN, J. S., N. KAARSEN, AND A. M. WINGENDER (2016): “Irrigation and Autocracy,” *Journal of the European Economic Association*, forthcoming.
- BERKEY, J. P. (2003): *The Formation of Islam: Religion and Society in the Near East, 600-1800*. Cambridge University Press, Cambridge.
- BISIN, A., AND T. VERDIER (2000): “Beyond the Melting Pot: Cultural Transmission, Marriage, and the Evolution of Ethnic and Religious Traits,” *Quarterly Journal of Economics*, 115, 955–988.
- BLYDES, L. (2014): “How Does Islamist Local Governance Affect the Lives of Women?,” *Governance*, 27(3), 489–509.
- BOAHEN, A., J. AJAYI, AND M. TIDY (1966): *Topics in West African History*. Longman, London.
- BOGLE, E. C. (1998): *Islam: Origin and Belief*. University of Texas Press, Austin, TX.
- BOTTICINI, M., AND Z. ECKSTEIN (2005): “Jewish Occupational Selection: Education, Restrictions, or Minorities?,” *Journal of Economic History*, 65, 922–948.
- (2007): “From Farmers to Merchants, Conversions and Diaspora: Human Capital and Jewish History,” *Journal of the European Economic Association*, 5, 885–926.
- BRICE, W. C., AND H. KENNEDY (2001): *An Historical Atlas of Islam*. Brill Academic Publishers, Leiden.
- BULLIET, R. W. (1975): *The Camel and the Wheel*. Columbia University Press, New York, NY.
- (1979): *Conversion to Islam in the Medieval Period: An Essay in Quantitative History*. Harvard University Press, Cambridge, MA.
- CAMPANTE, F., AND D. YANAGIZAWA-DROTT (2015): “Does Religion Affect Economic Growth and Happiness? Evidence from Ramadan,” *Quarterly Journal of Economics*, 130(2), 615–658.

- CANTONI, D. (2012): “Adopting a New Religion: The Case of Protestantism in 16th Century Germany,” *Economic Journal*, 122(560), 502–531.
- CERVELLATI, M., AND U. SUNDE (2017): “On the Emergence of Religious Norms – Theory and Evidence from the Protestant Reformation,” Working Paper, mimeo University of Bologna.
- CHANEY, E. (2012): “Islam and Human Capital Formation: Evidence from Pre-Modern Muslim Science,” in *Handbook of the Economics of Religion*, ed. by R. McCleary. Oxford University Press, Oxford.
- (2016): “Religion and the Rise and Fall of Islamic Science,” Working Paper, mimeo Harvard University.
- CHANEY, E., AND R. HORNBECK (2016): “Economic Dynamics in the Malthusian Era: Evidence from the 1609 Spanish Expulsion of the Moriscos,” *Economic Journal*, 126(594), 1404–1440.
- CHAUDHURI, K. (1985): *Trade and Civilisation in the Indian Ocean: An Economic History from the Rise of Islam to 1750*. Cambridge University Press, Cambridge.
- CLINGINGSMITH, D., A. I. KHWAJA, AND M. KREMER (2009): “Estimating the Impact of The Hajj: Religion and Tolerance in Islam’s Global Gathering,” *Quarterly Journal of Economics*, 124(3), 1133–1170.
- COHEN, A. (1971): “Cultural Strategies in the Organization of Trading Diasporas,” in *The Development of Indigenous Trade and Markets in West Africa*, ed. by C. Meillassoux, pp. 206–281. Oxford University Press, London.
- CONLEY, T. G. (1999): “GMM Estimation with Cross Sectional Dependence,” *Journal of Econometrics*, 92(1), 1–45.
- DAVIDSON, B. (1969): *A History of East and Central Africa*. Doubleday Anchor Books, New York, NY.
- DE GRAAUW, A., B. MAIONE-DOWNING, AND M. MCCORMICK (2014): “Geodatabase of Ancient Ports and Harbours,” DARMC Scholarly Data Series, Data Contribution Series 2013-2. (version 1.1). DARMC, Center for Geographic Analysis, Harvard University, Cambridge, MA.
- DEVISSE, J. (1988): “Trade and trade routes in West Africa,” in *General history of Africa 3: Africa from the seventh to the eleventh century*, ed. by M. Elfasi, and H. I., pp. 367–435. Heinemann, London.
- EATON, R. M. (1996): *The Rise of Islam and the Bengal Frontier, 1204-1760*. University of California Press, Berkeley, CA.
- ELLIOT, H., AND J. DOWSON (1867): *The History of India: As Told by Its Own Historians. The Muhammadan Period, v.1*. Trübner and Company, London.
- ENGERMAN, S. L., AND K. L. SOKOLOFF (1997): “Factor Endowments, Institutions, and Differential Paths of Growth among New World Economies,” in *How Latin America Fell Behind*, ed. by S. Haber, pp. 260–304. Stanford University Press, Stanford, CA.
- (2002): “Factor Endowments, Inequality, and Paths of Development among New World Economies,” Working Paper No. 9259, NBER.
- ENSMINGER, J. (1997): “Transaction Costs and Islam: Explaining Conversion in Africa,” *Journal of Institutional and Theoretical Economics*, 153(1), 3–29.
- ESPOSITO, J. (1999): *The Oxford History of Islam*. Oxford University Press, Oxford.
- ETHNOLOGUE (2005): *Languages of the World*, SIL International; Fifteenth edition.

- FOLTZ, R. (1999): *Religions of the Silk Road: Overland Trade and Cultural Exchange from Antiquity to the Fifteenth Century*. St. Martin's Press, New York, NY.
- GEERTZ, C. (1968): *Islam Observed: Religious Development in Morocco and Indonesia*. University of Chicago Press, Chicago.
- GENNAIOLI, N., AND I. RAINER (2007): "The Modern Impact of Precolonial Centralization in Africa," *Journal of Economic Growth*, 12(3), 185–234.
- GRAY, P. J. (1999): "A Corrected Ethnographic Atlas," *World Cultures*, 10, 24–85.
- GREIF, A. (1994): "Cultural Beliefs and the Organization of Society: A History and Theoretical Reflection on Collectivist and Individualist Societies," *The Journal of Political Economy*, 102(5), 912–950.
- GREIF, A., AND G. TABELLINI (2010): "Cultural and Institutional Bifurcation: China and Europe Compared," *American Economic Review: Papers and Proceedings*, 100(2), 135–140.
- GUIO, L., P. SAPIENZA, AND L. ZINGALES (2003): "People's Opium? Religion and Economic Attitudes," *Journal of Monetary Economics*, 50(1), 225–282.
- (2016): "Long Term Persistence," *Journal of the European Economic Association*, 14(6), 1401–1436.
- HISKETT, M. (1984): *The Development of Islam in West Africa*. Longman, London.
- HOLT, P., A. LAMBTON, AND B. LEWIS (1970): *The Cambridge History of Islam, v. 2A*. Cambridge University Press, Cambridge.
- HOUBEN, V. J. (2003): "Southeast Asia and Islam," *The Annals of the American Academy of Political and Social Science*, 588(1), 149–170.
- HSIANG, S. M. (2013): "Visually-Weighted Regression," Working Paper, mimeo Princeton University.
- HSU, B., J. GIBBON, C. HACKETT, AND A. REYNOLDS (2008): "Estimating the Religious Composition of All Nations: An Empirical Assessment of the World Christian Database," *Journal for the Scientific Study of Religion*, 74(4), 678–693.
- IBN KHALDUN (1377): *Muqaddimah: An Introduction to History, transl. Franz Rosenthal (1967)*. Princeton University Press, Princeton, NJ.
- IBRAHIM, M. (1990): *Merchant Capital and Islam*. University of Texas Press, Austin.
- INSOLL, T. (2003): *The Archaeology of Islam in Sub-Saharan Africa*. Cambridge University Press, Cambridge.
- IYIGUN, M. (2010): "Monotheism (From a Sociopolitical and Economic Perspective)," Working Paper, mimeo University of Colorado.
- JHA, S. (2013): "Trade, Institutions and Ethnic Tolerance: Evidence from South Asia," *American Political Science Review*, 107(4), 806–832.
- KURAN, T. (2003): "The Islamic Commercial Crisis: Institutional Roots of Economic Underdevelopment in the Middle East," *Journal of Economic History*, 63, 414–446.
- (2004): "Why the Middle East Is Economically Underdeveloped: Historical Mechanisms of Institutional Stagnation," *Journal of Economic Perspectives*, 18, 71–90.
- KURAN, T., AND S. LUSTIG (2012): "Judicial Biases in Ottoman Istanbul: Islamic Justice and Its Compatibility with Modern Economic Life," *Journal of Law and Economics*, 55(3), 631–666.

- LA PORTA, R., F. LOPEZ-DE-SILANES, A. SHLEIFER, AND R. VISHNY (1997): “Legal Determinants of External Finance,” *Journal of Finance*, 52(3), 1131–1150.
- LAPIDUS, I. M. (2002): *A History of Islamic Societies*. Cambridge University Press, Cambridge.
- LAST, M. (1979): “Some Economic Aspects of Conversion in Hausaland (Nigeria),” in *Conversion to Islam*, ed. by N. Levtzion, pp. 236–246. Holmes and Meier, New York, NY.
- LEVTZION, N. (1979): *Conversion to Islam*. Holmes and Meier Publishers, New York, NY.
- LEVTZION, N., AND R. POWELS (2000): *History Of Islam In Africa*. Ohio University Press, Athens, OH.
- LEWIS, B. (1993): *The Arabs in History, 6th Edition*. Oxford University Press, Oxford.
- LEWIS, I. M. (1980): *Islam in Tropical Africa*. International African Institute, London.
- MAKHDUM, S. Z. (2006): *Tuhfat al-Mujahidin: A Historical Epic of the Sixteenth Century. Translated from Arabic by S. Muhammad Husayn Nainar*. Islamic Book Trust, Kuala Lumpur / Calicut.
- MARTIN, X. S. I., G. DOPPELHOFER, AND R. I. MILLER (2004): “Determinants of Long-Run Growth: a Bayesian Averaging of Classical Estimates (BACE) Approach,” *American Economic Review*, 94(4), 813–835.
- MARX, K. (1833 [1970]): *Critique of Hegel’s Philosophy of Right, Edited by Joseph O’Malley*. Cambridge University Press, Cambridge.
- MATTULADA (1983): “Islam di Sulawesi Selatan” (Islam in South Sulawesi),” in *Agama dan Perubahan Sosial (Religion and Social Change)*, ed. by T. Abdullah. Rajawali, Jakarta.
- MCCORMICK, M., G. HUANG, G. ZAMBOTTI, AND J. LAVASH (2013): “Roman Road Network (version 2008),” DARMC Scholarly Data Series, Data Contribution Series 2013-5. DARMC, Center for Geographic Analysis, Harvard University, Cambridge, MA.
- MERI, J., AND J. BACHARACH (2006): *Medieval Islamic Civilization: An Encyclopedia*, Routledge Encyclopedias of the Middle Ages. Routledge, New York.
- MICHALOPOULOS, S. (2012): “The Origins of Ethnolinguistic Diversity,” *American Economic Review*, 102(4), 1508–1539.
- MICHALOPOULOS, S., A. NAGHAVI, AND G. PRAROLO (2016): “Islam, Inequality, and Pre-Industrial Comparative Development,” *Journal of Development Economics*, 120, 86–98.
- MICHALOPOULOS, S., AND E. PAPAIOANNOU (2013): “Pre-Colonial Ethnic Institutions and Contemporary African Development,” *Econometrica*, 81(1), 113–152.
- MIKHAIL, A. (2012): *Water on Sand*. Oxford University Press, Oxford.
- MILLER, J. (1969): *The spice trade of the Roman Empire, 29 B.C. to A.D. 641*, Oxford University Press Academic Monogra Series. Clarendon Press, Oxford.
- MINAHAN, J. (2014): *Ethnic Groups of North, East, and Central Asia: An Encyclopedia*, Ethnic groups of the world. Abc-Clio Incorporated, Santa Barbara, CA.
- NUNN, N., AND D. PUGA (2012): “Ruggedness: The Blessing of Bad Geography in Africa,” *Review of Economics and Statistics*, 94(1), 20–36.
- O’BRIEN, P. K. (1999): *Oxford Atlas of World History*. Oxford University Press, New York, NY.
- PEOPLES, H. C., AND F. W. MARLOWE (2012): “Subsistence and the Evolution of Religion,” *Human Nature*, 23(3), 253–269.

- PLATTEAU, J.-P. (2008): "Religion, Politics, and Development: Lessons from the Lands of Islam," *Journal of Economic Behavior and Organization*, 68, 329–351.
- (2011): "Political Instrumentalization of Islam and Threat of an Obscurantist Deadlock," *World Development*, 39, 243–260.
- PRYOR, F. L. (2007): "The Economic Impact of Islam on Developing Countries," *World Development*, 35(11), 1815–1835.
- RAMANKUTTY, N., J. A. FOLEY, C. MONFREDA, AND J. FOLEY (2008): "Farming the Planet: 1. Geographic Distribution of Global Agricultural Lands in the Year 2000," *Global Biogeochemical Cycles*, 22, 1–19.
- RAMANKUTTY, N., J. A. FOLEY, J. NORMAN, AND K. MCSWEENEY (2002): "The Global Distribution of Cultivable Lands: Current Patterns and Sensitivity to Possible Climate Change," *Global Ecology and Biogeography*, 11, 377–392.
- RAWLINSON, H. (2003): *Ancient and Medieval History of India*. Bharatiya Kala Prakashan, New Delhi.
- RICHERSON, P. J. (1996): *Principles of Human Ecology*. Pearson Custom Pub, New York, NY.
- RICKLEFS, M. (1991): *A History of Modern Indonesia since c.1300, 2nd Edition*. MacMillan, London.
- ROBINSON, D. (2004): *Muslim Societies in African History*, New Approaches to African History. Cambridge University Press, New York, NY.
- ROEMER, H. R. (2000): *History of the Turkic Peoples in the Pre-Islamic Period*. Klaus Schwarz Verlag, Berlin.
- ROES, F. L., AND M. RAYMOND (2003): "Belief in Moralizing Gods," *Evolution and Human Behavior*, 24, 126–135.
- RUBIN, J. (2009): "Social Insurance, Commitment, and the Origin of Law: Interest Bans in Early Christianity," *Journal of Law and Economics*, 52, 761–777.
- SHILLINGTON, K. (2005): *Encyclopedia of African history, v. 3*. Fitzroy Dearborn, New York, NY.
- SINOR, D. (1990): *The Cambridge History of Early Inner Asia, v. 1*. Cambridge University Press, Cambridge.
- SOUCEK, S. (2000): *A History of Inner Asia*. Cambridge University Press, Cambridge.
- TRIMINGHAM, J. S. (1962): *A History of Islam in West Africa*. Oxford University Press, London.
- (1964): *Islam in east Africa*. Clarendon Press, Oxford.
- VOIGTLANDER, N., AND H.-J. VOTH (2012): "Persecution Perpetuated: The Medieval Origins of Anti-Semitic Violence in Nazi Germany," *Quarterly Journal of Economics*, 127, 1339–1392.
- WADE, G. (2009): "An Early Age of Commerce in Southeast Asia, 900-1300 CE," *Journal of Southeast Asian Studies*, 40(2), 221–265.
- WATT, W. M. (1961): *Muhammad: Prophet and Statesman*. Oxford University Press, London.
- WINK, A. (1990): *Al-Hind: The Making of the Indo-Islamic World*. E.J. Brill, Leiden.
- WLMS (2006): World Language Mapping System, Version 3.2 Available on-line at <http://www.gmi.org/wlms/>.
- WOOD, E. (2003): *Empire of Capital*. VERSO, New York, NY.

WRD (2006): World Religion Database, BRILL, Available on-line at <http://www.worldreligiondatabase.org/>.

Supplementary Appendix for "Trade and Geography in the Spread of Islam"

6 Appendix

6.1 Data: Geographical Variables

Absolute Latitude: Absolute distance from the equator averaged across the centroids of each 0.5 by 0.5 decimal degrees cell that fall within a country or ethnic group in decimal degrees.

Source: Constructed using ArcGis.

Average Land Quality: Average suitability for farming based on climatic and soil characteristics within the respective unit of analysis.

Source: Michalopoulos (2012). The raw dataset is available at the Atlas of the Biosphere.¹⁹

In order to construct this index, Ramankutty et al. (2002) empirically estimate the probability density function of the percentage of croplands around 1990 with respect to climate and soil characteristics. Then the authors combine the derived probability with data on climate and soil quality to predict regional suitability for agriculture at the resolution of 0.5 degrees latitude by 0.5 degrees longitude worldwide. The climatic characteristics are based on mean-monthly climate conditions for the 1961–1990 period and capture (i) monthly temperature (ii) precipitation and (iii) potential sunshine hours. All the climatic conditions weakly increase the suitability of land for agriculture. Regarding the soil suitability, the traits considered are a measure of the total organic content (carbon density) and the nutrient availability (soil pH). The relationship of these indexes with agricultural suitability is non-monotonic. Low and high values of pH limit cultivation potential, since these values signal that soils are too acidic or too alkaline, respectively. Specifically, Average Land Quality, lq , is the product of two components capturing the climatic suitability for cultivation, lq_{clim} , and the soil suitability, lq_{soil} . Hence, $lq = lq_{clim} * lq_{soil}$. Each component is constructed in the following way: $lq_{clim} = f_1(GDD) * f_2(m)$, where GDD denotes growing degree days and m is a moisture index capturing the availability of water to plants. Regarding soil characteristics, $lq_{soil} = g_1(C_{soil}) * g_2(pH_{soil})$, where C_{soil} stands for soil carbon density and pH_{soil} captures the acidity or alkalinity of soil. Each functional form is derived from the probability density function of actual cropland area versus each component. For example, in the case of $f_1(GDD)$ and $f_2(m)$, according to Ramankutty et al. (2002) a sigmoidal function best fits the observed empirical relationship between the fraction of a cell that was cultivated in 1990 and the GDD and m respectively. Specifically, $f_1(GDD) = 1/(1 + \exp(a(b \square GDD)))$ and $f_2(m) = 1/(1 + \exp(c(d \square m)))$ with $a = 0.0052$, $b = 1334$, $c = 14.705$ and $d = 0.3295$. The functional forms of $g_1(C_{soil})$ and $g_2(pH_{soil})$ are the following: $g_1(C_{soil}) = (a/(1 + \exp(b(c \square C_{soil})))) * (a/(1 + \exp(d(e \square C_{soil}))))$ with $a = 3.9157$, $b = 1.3766$,

¹⁹It may be downloaded from http://www.sage.wisc.edu/iamdata/grid_data_sel.php.

$$c = 3.468 \text{ and } d = 0.0791 \text{ and } g_2(pH_{soil}) = \left\{ \begin{array}{ll} 2.085 + 0.475pH_{soil} & \text{if } pH_{soil} \leq 6.5 \\ 1.0 & \text{if } 6.5 < pH_{soil} < 8 \\ 1.0 - 2.0pH_{soil} & \text{if } pH_{soil} \geq 8 \end{array} \right\}.$$

Distance to Mecca: Great-circle distance from Mecca averaged across the centroids of each 0.5 by 0.5 decimal degrees cell that fall within a country or ethnic group in thousand kilometers.

Source: Calculated using the Haversine Formula.

Distance to Trade Routes before 600 CE: Great-circle distance from the nearest trade route before 600 CE averaged across the centroids of each 0.5 by 0.5 decimal degrees cell that fall within a country or ethnic group in thousand kilometers.

Source: Used the trade routes mapped in Brice and Kennedy (2001) in 600 CE; the digital version of the Roman roads identified in the Barrington Atlas (McCormick, et al., 2013); and a list of around 2,900 ancient ports based on the writings of 66 ancient authors and a few modern authors, including the Barrington Atlas (De Graauw, Maione-Downing, and McCormick, 2014).

Distance to Trade Routes in 1800 CE: Great-circle distance from the nearest trade route in 1800 CE averaged across the centroids of each 0.5 by 0.5 decimal degrees cell that fall within a country or ethnic group in thousand kilometers.

Source: Calculated using the all trade routes mapped in Brice and Kennedy (2001) before 1800 CE. This information is supplemented by maps from O'Brien (1999) which contain information on trade routes within Europe, Southeast Asia, West Africa, and China during the same time period; the digital version of the Roman roads identified in the Barrington Atlas (McCormick, et al., 2013); and a list of around 2,900 ancient ports based on the writings of 66 ancient authors and a few modern authors, including the Barrington Atlas (De Graauw, Maione-Downing, and McCormick, 2014).

Land Inequality: Inequality in the regional suitability for agriculture within country or linguistic homeland. The measure used in the regressions is the log of the Gini index.

Source: See **Average Land Quality**

Sea Distance: Distance from the nearest coastline (1000s of km.) averaged across the centroids of each 0.5 by 0.5 decimal degrees cell that fall within a country or ethnic group in thousand kilometers.

Source: The coastline shapefile comes from the coastlines of seas and oceans dataset. Publisher: Global Mapping International, Colorado Springs, Colorado, USA. Series name: Global Ministry Mapping System. Series issue: Version 3.0.

Irrigation Potential: Indicator that takes the value 1 if there are regions in a given country/homeland classified as Impact Class 5, i.e., there are cells where irrigation can more than double agricultural yields.

Source: GAEZ available at <http://webarchive.iiasa.ac.at/Research/LUC/SAEZ/index.html>. The raster file is plate number 47.

Ruggedness: Apply the ruggedness index formula by Nunn and Puga (2012) using the topographical data of the Global Land One-Kilometer Base Elevation (GLOBE) digital elevation model.

Ratio of Land Allocation of Pasture Relative to Agriculture in 2000: The data on land use come from Ramankutty et al. (2002) and provide at the grid level of 0.083 by 0.083 decimal

degrees an estimate of the shares of land allocated to pasture and agriculture in 2000 CE, respectively. We aggregate this information at the homeland level to obtain a measure of how tilted land allocation is in favor of pasture.

6.2 Data: Historical Variables

% Muslim in 2005 CE: Fraction of Muslim population in 2005 within an ethnic group.

Source: World Religion Database, available at: <http://www.worldreligiondatabase.org/>

% Muslim in 1900 CE: Fraction of Muslim population in 1900CE within country.

Source: Religion Adherence Data - McCleary and Barro (2005) available at

<http://ksghome.harvard.edu/~rmcclea/data.html>

Muslim Majority: Dummy variable equals 1 if the percentage of Muslims either in a country or an ethnic group is larger than 90%.

Source: See **% Muslim in 2005 CE** / **% Muslim in 1900 CE**.

Animal Husbandry: 0-9 scale index reflecting the intensity of pastoralism. The index equals 0 when there is 0-5% dependence; 1 when there is 6-15% dependence; 2 when there is 16-25% dependence; 3 when there is 26-35% dependence; 4 when there is 36-45% dependence; 5 when there is 46-55% dependence; 6 when there is 56-65% dependence; 7 when there is 66-75% dependence; 8 when there is 76-85% dependence; and 9 when there is 86-100% dependence. Source: Murdock (1967); variable code in the Ethnographic Atlas v4.

Agriculture: 0-9 scale index reflecting the intensity of agriculture. The index equals 0 when there is 0-5% dependence; 1 when there is 6-15% dependence; 2 when there is 16-25% dependence; 3 when there is 26-35% dependence; 4 when there is 36-45% dependence; 5 when there is 46-55% dependence; 6 when there is 56-65% dependence; 7 when there is 66-75% dependence; 8 when there is 76-85% dependence; and 9 when there is 86-100% dependence. Source: Murdock (1967); variable code in the Ethnographic Atlas v5.

Ratio of Historical Subsistence Share of Pastoralism Relative to Agriculture:
 $\ln((1+v4)/(1+v5))$.

Dependence on Trade: Percent importance in contribution to subsistence from trade; variable *v819* from the Standard Cross-Cultural Sample (SCCS).

Takes the following values: 0%, 5%, 10%, 15%, 20%, 25%, 55%, 65%. Source: Murdock and White (1967); variable code in the Standard Cross Cultural Sample v819.

Class Stratification Indicator: Following Gennaioli and Rainer (2007) we define a dummy stratification index that equals zero when Murdock's variable equals zero indicating "absence of significant class distinctions among freemen, ignoring variations in individual reputes achieved through skill, valor, piety, or wisdom," and one when Murdock's class stratification measure equals 1, 2, 3, or 4. Source: Murdock (1967); variable code in the Ethnographic Atlas v66.

Inheritance Distribution for Movable Property: Non-Ordered variable that equals 1 when distribution is "equal or relatively equal," 2 when it is "exclusively," 3 when it is "ultimogeniture," 4 when it is "primogeniture," and 9 when there is "absence of inheritance of real property."

Source: Murdock (1967); variable code in the Ethnographic Atlas v77.

Egalitarian Inheritance Distribution for Movable Property Indicator: takes on the value of 1 when the **Inheritance Distribution for Movable Property** is "equal or relatively equal" and when there is "absence of inheritance of real property" and zero otherwise. Source: Murdock (1967); variable code in the Ethnographic Atlas v77.

Egalitarian Inheritance Distribution for Land Property Indicator: takes on the value of 1 when the **Inheritance Distribution for Land Property** is "equal or relatively equal" and when there is "absence of inheritance of real property" and zero otherwise. Source: Murdock (1967); variable code in the Ethnographic Atlas v76.

High Gods: A "High God" is described as "a spiritual being who is believed to have created all reality and/or to be its ultimate governor, even though his/her sole act was to create other spirits who, in turn, created or control the natural world." The values of this variable are: (1) absent or not reported; (2) present but not active in human affairs; (3) present and active in human affairs but not supportive of human morality; and (4) present, active, and specifically supportive of human morality. We recoded values 1–3 into 0, thus, creating a variable "High Gods Supportive of Human Morality," with two values: either supportive of human morality, or not. Source: Murdock (1967); variable code in the Ethnographic Atlas v34 ("High Gods").

Jurisdictional Hierarchy beyond Local Community: Ordered variable ranging from 1 to 5 indicating the number of jurisdictional levels (political complexity) in each society above the local level. A 1 indicates stateless societies, 2 and 3 indicate petty and large paramount chiefdoms (or their equivalent), 4 and 5 indicate large states. Source: Murdock (1967); variable code in the Ethnolinguistic Atlas v33; Murdock's Atlas is available at: <http://eclectic.ss.uci.edu/~drwhite/worldcul/EthnographicAtlasWCRevisedByWorldCultures.sav>.

Monotheistic Religions: Territories of monotheistic religions are classified as those countries with an Abrahamic religion besides Islam by 1050 CE according to O'Brien (1999).

Muslim Empires: Territories of Muslim empires are classified as those countries which at some point hosted Islamic empires, kingdoms, and Sultanates according to Iyigun (2010).

6.3 Appendix Tables

6.3.1 Discussion on Societal Traits of Muslim Groups

In Appendix Table 4, we investigate whether Muslim groups are different from non-Muslim ones with respect to various societal and institutional traits. The unit is the ethnic group and the sample comprises all groups in the Old World for which we have found a correspondence between the Ethnologue and the Murdock's Ethnographic Atlas. All columns include country-specific constants.

The dependent variable in Column 1 is the number of jurisdictional levels beyond the local community, an index that has been used to capture historical state capacity at the ethnicity level (see Michalopoulos and Papaioannou, 2013). To the extent that Islam offered an institutional framework facilitating trade, one would expect Muslim groups to be more politically centralized. The positive and significant association between Muslim adherence and political complexity is consistent with the

idea that Islam was successful in gaining a hearing across tribal populations, politically integrating them into more centralized units.

One may wonder why a group needs to adopt a religion rather than just the appropriate economic principles. Such question is vast in its scope and a comprehensive answer cannot be provided within the confines of the present study. Nonetheless, among the pre-colonial traits recorded by Murdock (1967) there is an entry describing whether a group believes in gods that are supportive of human morality. Peoples and Marlowe (2012) and Roes and Raymond (2003) have shown that the presence of moral gods in historical societies is associated with intensive competition for resources, high threat of free-riding, and collective action problems. For trade to flourish across geographically unequal territories, cooperation across the underlying tribal clans was necessary. Islam's religious ideology with built-in penalties offered such a platform. With this background in mind, in Column 2 we regress Muslim representation on whether a group believes in moral gods. The coefficient suggests that a 50% increase in Muslim adherence within a group (close to one standard deviation) increases the likelihood that the group believes in gods that dictate what should (not) be done by 29% pointing to the importance of Islam as a commitment device.

Column 3 in Appendix Table 4 shows that land inequality harbors heterogeneous economic opportunities leading to the emergence of economically stratified societies. One-standard-deviation increase in geographic inequality increases the probability that a group will be stratified by 2%. Unlike non-Muslim groups, for which the link between geographic and social inequality is strong (Column 5), the tendency of an unequal geography to breed social inequality is muted for Muslim-majority societies (Column 4).

But what type of economic traits characterize Muslim communities? Unfortunately data on the extent of charity or usury laws within a group are not available; however, there is information on the type of the pre-colonial inheritance system that Kuran (2003, 2004b) and others have stressed as a key aspect of Islam. The dependent variable in Column 6 (7) of Appendix Table 4 is a dummy that takes the value 1 when the inheritance of movable (land) property is "equal or relatively equal" or when there is "absence of inheritance." The estimates suggest that Muslim groups are more likely to follow equal inheritance rules.

Figure 1 – Muslim Adherence and Ancient Trade Routes – Selected Countries

Figure 1a - China

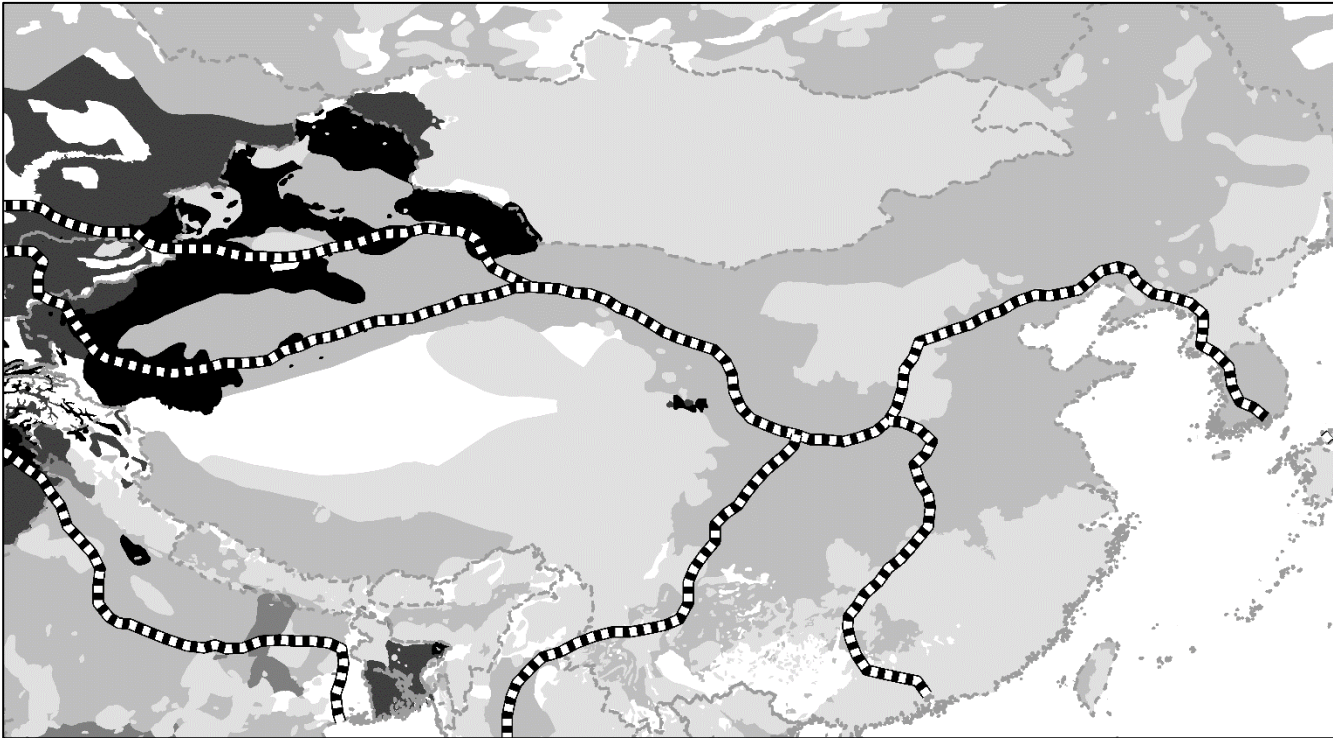


Figure 1b - Mali

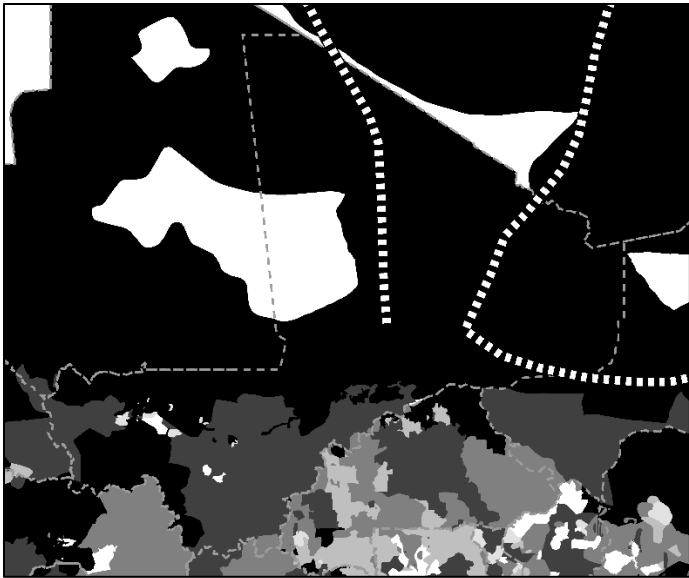


Figure 1c - Tanzania

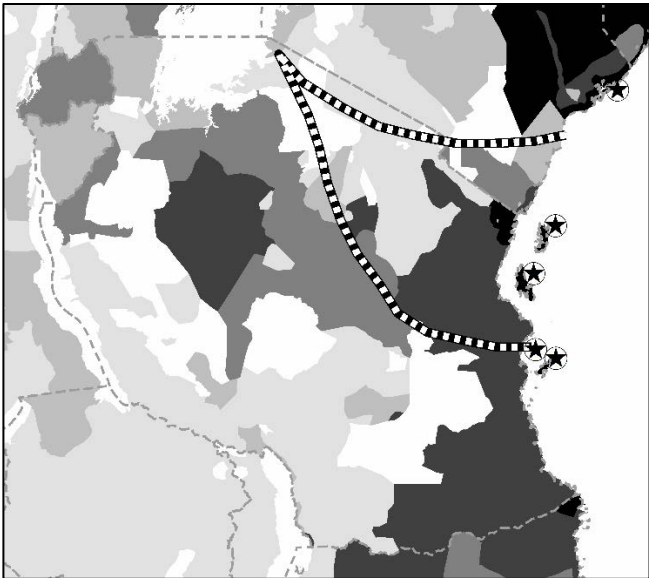


Figure 1d - Indonesia

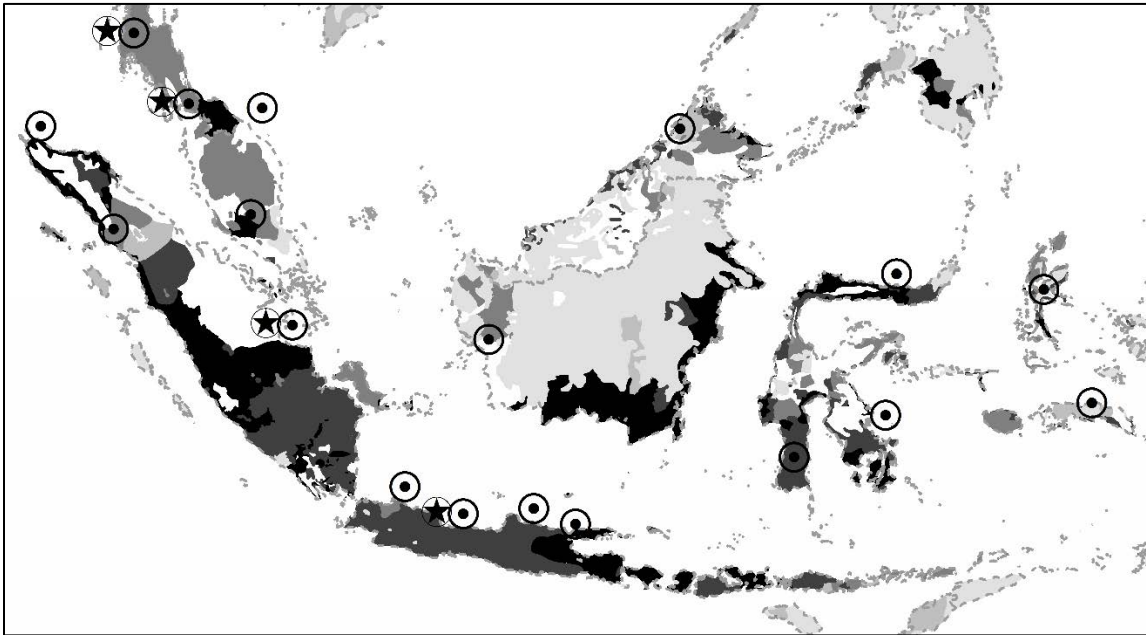


Figure 1e - India

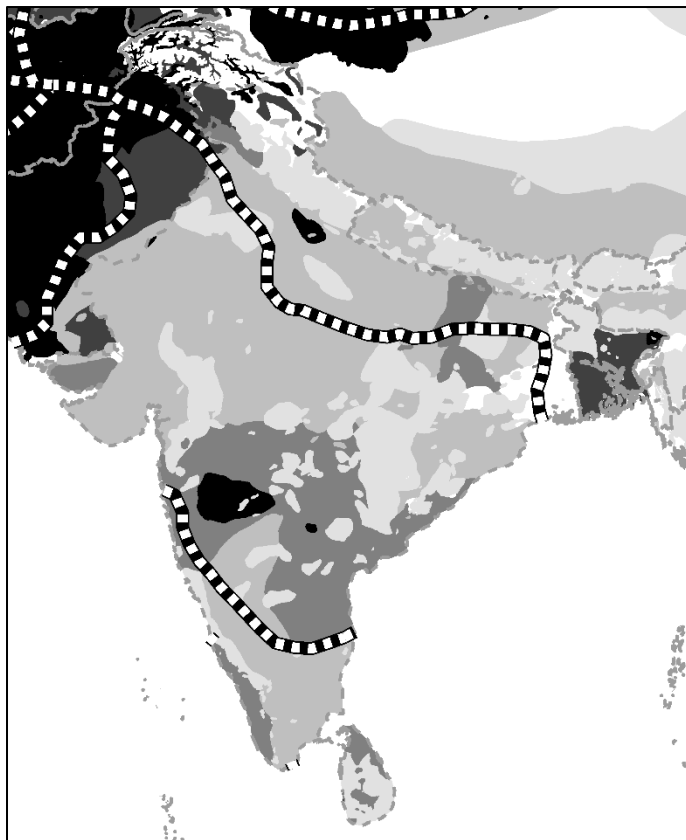


Figure 1 portrays Muslim adherence at the ethnic group level and historical trade routes within five countries (1a: China, 1b: Mali, 1c: Tanzania, 1d: Indonesia and 1e: India). Muslim adherence is represented in quintiles at the level of ethnic group, where actual homelands are from the Ethnologue version 15 and data on religious affiliation from the World Religion Database. Darker shades represent higher Muslim shares in the population. In Figures 1a, 1c, and 1e the trade routes are depicted as thick, black-and-white dashed lines and correspond to pre-600 CE. These routes are digitized from Brice and Kennedy (2001). The ancient ports and harbors, depicted as circled stars, are from Arthur de Graauw (2014). In figure 1b trade routes are relative to 900 AD, while in figures 1c and 1d ports in year 600 CE (1800 CE) are represented with circled stars (circled dots). Country borders are represented with a thin dashed grey line.

Figure 2 – Main Old World trade routes

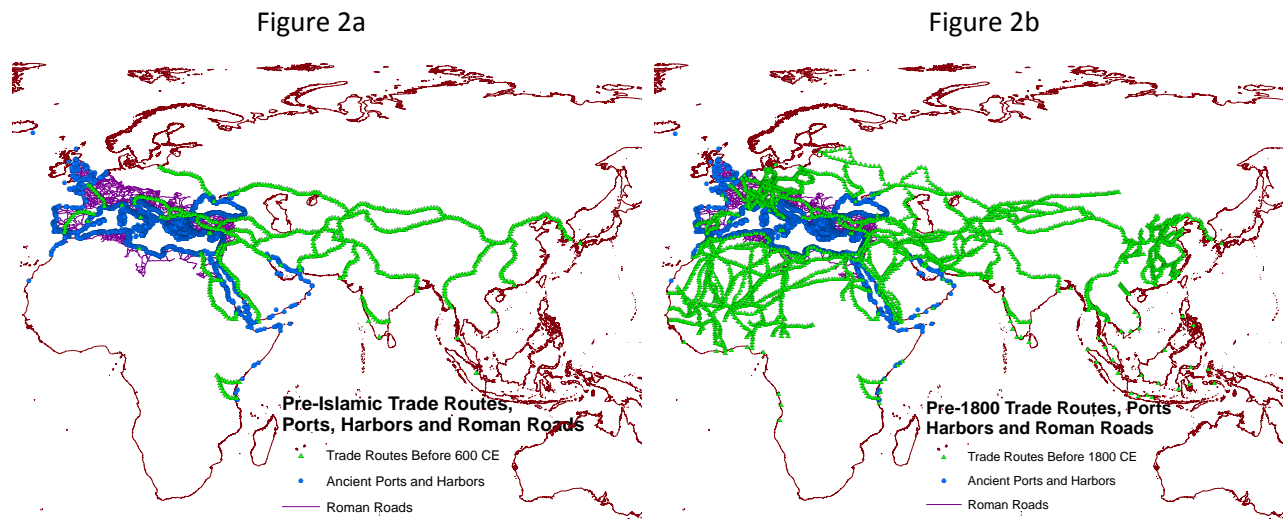


Figure 2a (2b) shows the Old World network of Roman roads (from the Barrington Atlas), ancient ports and harbours (from Arthur de Graauw, 2014) and trade routes (from Brice and Kennedy, 2001) in 600 AD (1800 AD).

Figure 3 - Non-parametric conditional correlation – Cross-country

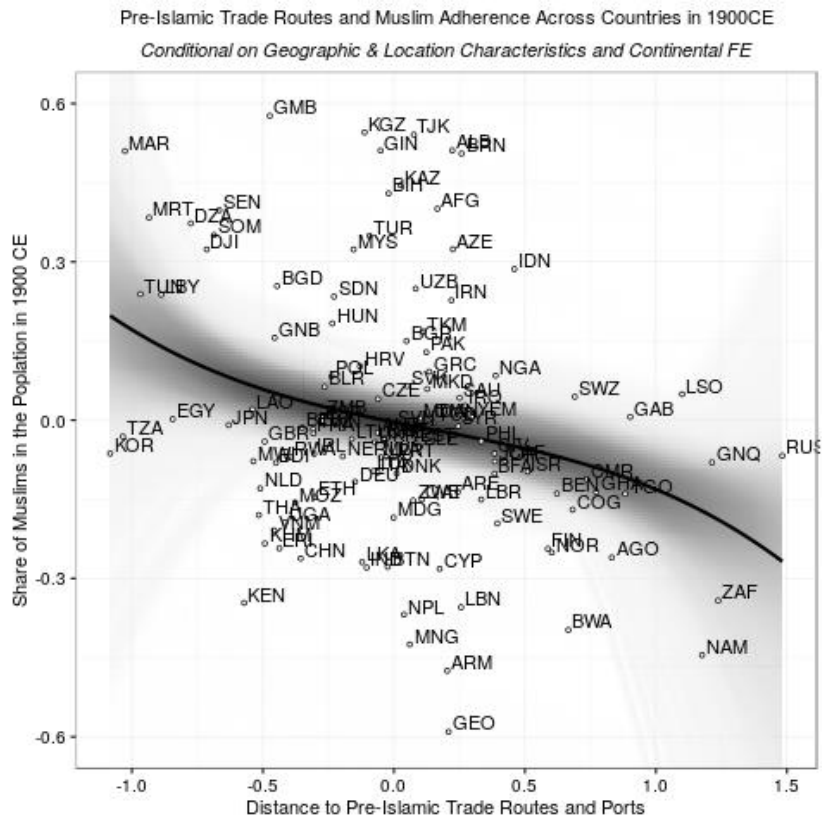


Figure 4 – Non-parametric conditional correlation – Cross-ethnic group

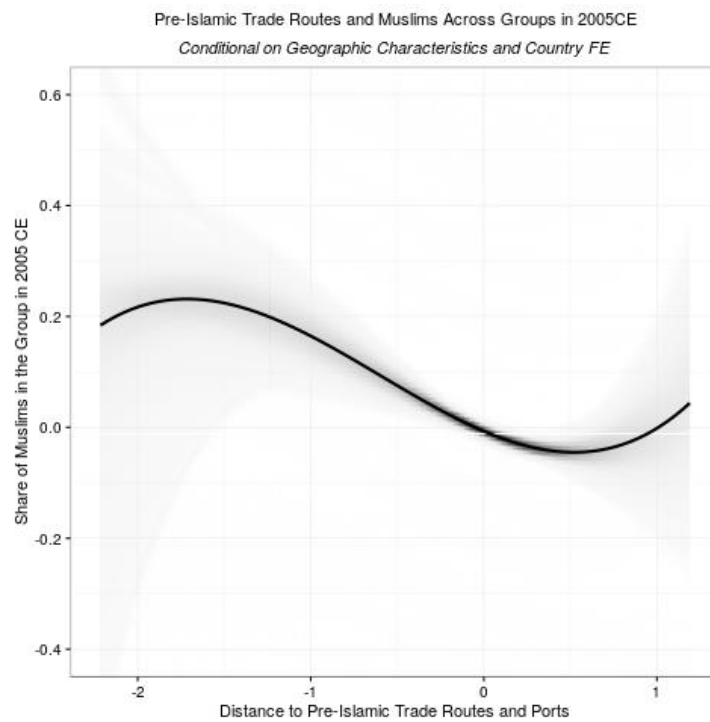


Table 1 – Countries

	(1)	(2)	(3)	(4)	(5)
Distance to 600 AD Trade Routes	-0.1500*** (0.0284)	-0.1391*** (0.0351)	-0.1650*** (0.0320)	-0.1415*** (0.0366)	-0.1307*** (0.0383)
Distance to Mecca		-0.0706*** (0.0159)	-0.0309** (0.0144)	-0.0004 (0.0185)	-0.0237 (0.0194)
Distance to the Coast		-0.0398 (0.1055)	-0.1499 (0.0981)	-0.1526 (0.1147)	-0.1925* (0.1016)
Absolute Latitude		-0.0054*** (0.0020)	-0.0063*** (0.0018)	-0.0026 (0.0020)	0.0034 (0.0033)
Ln Gini Index of Land Quality			0.1357*** (0.0393)	0.0932** (0.0446)	0.0965** (0.0425)
Ln Average Land Quality			-0.1010*** (0.0186)	-0.0842*** (0.0205)	-0.0640*** (0.0185)
Ln Land Area				-0.0487** (0.0245)	-0.0331 (0.0224)
Ln Ruggedness				-0.0069 (0.0247)	-0.0390* (0.0222)
Irrigation Potential Indicator				0.2508*** (0.0686)	0.1740*** (0.0635)
Presence of Desert Indicator				0.2174** (0.0956)	0.1035 (0.0927)
Continental FE	NO	NO	NO	NO	YES
Observations	127	127	127	127	127
R-squared	0.09	0.23	0.48	0.55	0.62

Table 1 reports OLS estimates associating the share of Muslims with geographical variables. Observations are at the level of countries, the sample is the Old World (Europe, Asia and Africa). In all specifications the dependent variable is the share of Muslims in 1900 from McCleary and Barro (2005). All specifications include the constant (not reported) and column (5) includes a set of continental effects. The Supplementary Appendix gives detailed definitions, data sources and summary statistics for all variables. Standard errors in parentheses are robust to heteroskedasticity. ***, **, and * indicate statistical significance at the 1%, 5%, and 10% level, respectively.

Table 2 – Within-country Across Groups Univariate Specifications

	(1)	(2)	(3)	(4)	(5)
Country	China	Mali	Tanzania	Indonesia	India
Distance from Trade routes 600AD	-0.2401*** (0.0839)	-0.7736*** (0.2418)	-0.4139*** (0.1474)	-0.1619*** (0.0114)	-0.1183*** (0.0425)
Observations	188	44	109	615	300
R-squared	0.03	0.23	0.05	0.22	0.01

Table 2 reports OLS estimates associating the share of Muslims with distance from trade routes in 600AD in selected countries, at the level of ethnic group. In all specifications the dependent variable is the share of Muslims in 2005 at ethnic group level from the World Religion Database. All specifications include a constant (not reported). The Supplementary Appendix gives detailed definitions, data sources and summary statistics for all variables. Standard errors in parentheses are robust to heteroskedasticity. ***, **, and * indicate statistical significance at the 1%, 5%, and 10% level, respectively.

Table 3A - Ethnic Groups

	(1)	(2)	(3)	(4)	(5)
Distance to 600 AD Trade Routes	-0.0652*** (0.0167)	-0.1712*** (0.0190)	-0.0997*** (0.0298)	-0.1071*** (0.0328)	-0.1151*** (0.0326)
Distance to Mecca			-0.0791*** (0.0190)	-0.0717*** (0.0221)	-0.0596*** (0.0225)
Distance to the Coast			-0.0343 (0.0603)	-0.0370 (0.0585)	-0.0411 (0.0594)
Absolute Latitude			0.0119** (0.0059)	0.0091 (0.0057)	0.0086* (0.0052)
Ln Gini Index of Land Quality				0.0333*** (0.0107)	0.0261** (0.0105)
Ln Average Land Quality				-0.0275 (0.0173)	-0.0278* (0.0158)
Ln Land Area					-0.0026 (0.0058)
Ln Ruggedness					0.0083 (0.0105)
Irrigation Potential Indicator					0.0900*** (0.0304)
Presence of Desert Indicator					0.0576 (0.0419)
Country FE	NO	YES	YES	YES	YES
Observations	3181	3181	3181	3181	3181
R-squared	0.05	0.51	0.52	0.53	0.54

Table 3A reports OLS estimates associating the share of Muslims with geographical variables. Observations are at the level of ethnic group, the sample is the Old World (Europe, Asia and Africa). In all specifications the dependent variable is the share of Muslims in 2005 from World Religion Database. Column (1) includes the constant (not reported), while the remaining columns include a set of country fixed effects. The Supplementary Appendix gives detailed definitions, data sources and summary statistics for all variables. Standard errors in parentheses are clustered at the country level. ***, **, and * indicate statistical significance at the 1%, 5%, and 10% level, respectively.

Table 3B – Ethnic Groups, Sample Split

Sample	(1) Within Muslim empires	(2) Outside Muslim empires	(3) Outside Muslim empires, previously non-monotheistic	(4) Outside Muslim empires, previously monotheistic
Distance to 600 AD Trade Routes	-0.1571*** (0.0359)	-0.1384* (0.0746)	-0.1660** (0.0804)	0.2384*** (0.0559)
Distance to Mecca	-0.0024 (0.0317)	-0.0784*** (0.0155)	-0.0445* (0.0228)	-0.1488*** (0.0150)
Distance to the Coast	-0.0548 (0.1238)	-0.0685 (0.0702)	-0.0390 (0.0900)	-0.1723*** (0.0150)
Absolute Latitude	0.0170* (0.0086)	0.0050 (0.0069)	0.0122* (0.0063)	-0.0327*** (0.0071)
Ln Gini Index of Land Quality	0.0125 (0.0141)	0.0307*** (0.0099)	0.0270*** (0.0098)	0.0474* (0.0233)
Ln Average Land Quality	-0.0289 (0.0179)	-0.0464** (0.0185)	-0.0686*** (0.0202)	0.0184** (0.0080)
Ln Land Area	0.0107 (0.0066)	-0.0071 (0.0067)	-0.0015 (0.0055)	-0.0067 (0.0089)
Ln Ruggedness	0.0148 (0.0095)	-0.0029 (0.0159)	-0.0190 (0.0141)	-0.0007 (0.0098)
Irrigation Potential Indicator	0.1133** (0.0524)	0.0811** (0.0359)	0.0563* (0.0322)	-0.0100 (0.0336)
Presence of Desert Indicator	-0.0185 (0.0406)	0.1096* (0.0571)	0.0413 (0.0566)	-0.0682 (0.0656)
Country FE	YES	YES	YES	YES
Observations	1166	2015	1843	172
R-squared	0.55	0.40	0.41	0.81

Table 3B reports OLS estimates associating the share of Muslims with geographical variables. Observations are at the level of ethnic group, the samples are partitions of the Old World (Europe, Asia and Africa). In Column 1 (2) the sample includes ethnic groups within (outside) the Muslim empires as classified by Iyigun (2010). In Column 3 (4) the sample is restricted to ethnic groups outside the Muslim empires where the dominant religion during the expansion of Islam was a non-monotheistic (monotheistic) one. In all specifications the dependent variable is the share of Muslims in 2005 from the World Religion Database. The Supplementary Appendix gives detailed definitions, data sources and summary statistics for all variables. Standard errors in parentheses are clustered at the country level. ***, **, and * indicate statistical significance at the 1%, 5%, and 10% level, respectively.

Table 4 - Ethnic Groups, Other Religions

	(1)	(2)	(3)	(4)	(5)
DEPENDENT VARIABLE	% Muslim	% Christian	% Hindu	% Buddhists	% Ethnoreligious
Distance to 600 AD Trade Routes	-0.1151*** (0.0326)	0.1408** (0.0590)	0.0405 (0.0413)	0.0188 (0.0204)	-0.0527 (0.0356)
Distance to Mecca	-0.0596*** (0.0225)	0.0072 (0.0529)	-0.0387 (0.0385)	-0.0104 (0.0163)	0.0753** (0.0349)
Distance to the Coast	-0.0411 (0.0594)	-0.0473 (0.0581)	-0.0055 (0.0227)	0.0583*** (0.0201)	0.0605 (0.0488)
Absolute Latitude	0.0086* (0.0052)	-0.0048 (0.0042)	-0.0019 (0.0016)	-0.0016 (0.0015)	-0.0017 (0.0044)
Ln Gini Index of Land Quality	0.0261** (0.0105)	-0.0104 (0.0099)	-0.0009 (0.0076)	0.0223* (0.0115)	-0.0343*** (0.0122)
Ln Average Land Quality	-0.0278* (0.0158)	0.0143 (0.0128)	0.0188 (0.0177)	-0.0331* (0.0172)	0.0174 (0.0209)
Ln Land Area	-0.0026 (0.0058)	0.0087* (0.0049)	0.0028 (0.0035)	0.0021 (0.0032)	-0.0177*** (0.0039)
Ln Ruggedness	0.0083 (0.0105)	0.0055 (0.0101)	-0.0151* (0.0087)	0.0078 (0.0056)	-0.0022 (0.0088)
Irrigation Potential Indicator	0.0900*** (0.0304)	-0.0296 (0.0185)	0.0079 (0.0090)	-0.0147 (0.0105)	-0.0546** (0.0247)
Presence of Desert Indicator	0.0576 (0.0419)	-0.0484 (0.0374)	0.0111 (0.0146)	-0.0520 (0.0335)	0.0172 (0.0482)
Country FE	YES	YES	YES	YES	YES
Observations	3181	3181	3181	3181	3181
R-squared	0.54	0.61	0.46	0.33	0.33

Table 4 reports OLS estimates associating the share of different religions with geographical variables. Observations are at the level of ethnic group, the sample is the Old World (Europe, Asia and Africa). In all specifications the dependent variable is the share of the population belonging to a given religion in 2005 measured at ethnic group level from the World Religion Database. All columns include a set of country fixed effects. The Supplementary Appendix gives detailed definitions, data sources and summary statistics for all variables. Standard errors in parentheses are clustered at the country level. ***, **, and * indicate statistical significance at the 1%, 5%, and 10% level, respectively.

Table 5 – Distance to Routes and Dependence on Trade

	(1)	(2)	(3)
Distance to 600 AD Trade Routes	-0.0765 (0.0528)		
Distance to 1800 AD Trade Routes		-0.1515*** (0.0542)	-0.1511*** (0.0541)
Observations	121	121	117
R-squared	0.01	0.03	0.04

Table 5 reports OLS estimates associating the relative importance of trade with distance to trade routes. Observations are at the level of a historical society, the sample is the Old World (Europe, Asia and Africa). In all specifications the dependent variable is the (log of 1 plus) share from trade in subsistence measured as reported in the Standard Cross Cultural Sample (SCCS). Column (3) excludes societies that were documented by ethnographers before 1750 (Babylonians, Hebrews, Khmer, and Romans). The Supplementary Appendix gives detailed definitions, data sources and summary statistics for all variables. Standard errors in parentheses are robust to heteroskedasticity. ***, **, and * indicate statistical significance at the 1%, 5%, and 10% level, respectively.

Table 6 – What Does Land inequality Reflect?

	(1)	(2)	(3)	(4)	(5)	(6)	(7)	(8)
Sample	Ethnologue			Ethnologue & Murdock's Ethnographic Atlas				SCCS
DEPENDENT VARIABLE	Log Ratio of Land Allocation of Pasture Relative to Agriculture in 2000			Log Ratio of Historical Subsistence Share of Pastoralism Relative to Agriculture				Log 1+ Share of Subsistence from Trade
Ln Gini Index of Land Quality	0.2328*** (0.0764)	0.2203*** (0.0789)			0.1854*** (0.0379)	0.1004** (0.0445)		
Ln Average Land Quality	-0.3790*** (0.1273)	-0.3068** (0.1405)			-0.1569*** (0.0502)	-0.1025** (0.0433)		
Absolute Latitude		0.0728** (0.0310)				0.0386*** (0.0123)		
Ln Land Area		-0.0931*** (0.0305)				0.0122 (0.0215)		
Ln Ruggedness		0.1630** (0.0715)				0.0376 (0.0385)		
Presence of Desert Indicator		0.4325 (0.3031)				0.3564** (0.1537)		
Irrigation Potential Indicator		0.1404 (0.1576)				0.1917** (0.0749)		
Share of Muslims in 2005			0.7402*** (0.1807)				0.5232*** (0.1510)	
Log Ratio of Historical Subsistence Share of Pastoralism Relative to Agriculture				0.1115*** (0.028)				0.2938*** (0.0797)
Country FE	YES	YES	YES	YES	YES	YES	YES	NO
Observations	2845	2845	2845	1131	1210	1210	1210	186
R-squared	0.68	0.69	0.67	0.35	0.39	0.43	0.36	0.05

Table 6 reports OLS estimates associating (contemporary and historical) measures of dependence on pastoralism and agriculture with land inequality, adherence to Islam and other historical and geographic variables. The dependent variable in columns 1 to 3 is the log ratio of pastoral to agricultural lands from Ramankutty et al., 2008. The log ratio of historical subsistence of pastoral to agricultural share, from Murdock's Ethnographic Atlas is the dependent variable in columns 4 to 7 and the (log +1) share of subsistence from trade from the SCCS dataset in column 8. Observations are at the ethnic group level in columns 1 to 7 and at the level of historical societies in column 8. The sample used is the Old-World part of the Ethnologue (columns 1 to 3), its intersection with the Murdock's Ethnographic Atlas (columns 4 to 7) and all groups in the Standard Cross Cultural Sample in column 8. The Supplementary Appendix gives detailed definitions, data sources and summary statistics for all variables. Columns 1 to 7 include a set of country fixed effects with errors clustered at the country level in parentheses, while those of column 8 are robust to heteroscedasticity. ***, **, and * indicate statistical significance at the 1%, 5%, and 10% level, respectively.

Table 7 – Land Inequality and Proximity to Trade Routes

Sample	(1) Countries	(2) Countries	(3) Ethnic Groups	(4) Ethnic Groups
(a) Ln Gini Index of Land Quality	0.1546*** (0.0425)	0.1135** (0.0443)	0.0458** (0.0176)	0.0368** (0.0158)
(b) Distance to 600 AD Trade Routes	-0.3120*** (0.0551)		-0.1587*** (0.0299)	
(a)*(b)	-0.1328*** (0.0314)		-0.0174* (0.0097)	
(c) Distance to 1800 AD Trade Routes		-0.3759*** (0.0884)		-0.2271** (0.1005)
(a)*(c)		-0.1397*** (0.0431)		-0.0366** (0.0143)
Controls	ALL	ALL	ALL	ALL
Continental FE	YES	YES	NO	NO
Country FE	NO	NO	YES	YES
Observations	127	127	3181	3181
R-squared	0.65	0.64	0.54	0.54

Table 7 reports OLS estimates associating the share of Muslims with geographical variables. Observations are at the level of countries (columns 1 and 2) or ethnic groups (columns 3 and 4). The sample is the Old World (Europe, Asia and Africa). In columns 1 and 2 the dependent variable is the share of Muslims in 1900 across countries from McCleary and Barro (2005), while in columns 3 and 4 the dependent variable is the share of Muslims across ethnic groups from the World Religion Database (WRD). Controls are Distance to Mecca, Distance to the Coast, Absolute Latitude, Ln Average Land Quality, Ln Land Area, Ln Ruggedness, Irrigation Potential Indicator and Presence of Desert Indicator. The Supplementary Appendix gives detailed definitions, data sources and summary statistics for all variables. Columns 1 and 2 (3 and 4) include a set of continental (country) fixed effects. Standard errors, in parentheses, are robust to heteroscedasticity (columns 1 and 2) and clustered at the country level (columns 3 and 4). ***, **, and * indicate statistical significance at the 1%, 5%, and 10% level, respectively.

Appendix Table 1 – Descriptive Statistics and Correlations, County level

Panel A

Variable	Obs	Mean	Std. Dev.	Min	Max
% Muslim (1900)	127	0.29	0.39	0	1
Distance to 600 AD Trade Routes	127	0.70	0.79	0	2.74
Distance to Mecca	127	4.05	1.87	0.74	9.17
Distance to the Coast	127	0.33	0.34	0.01	1.51
Absolute Latitude	127	28.66	17.48	0.55	65.26
Ln Gini Index of Land Quality	127	-1.37	0.75	-3.45	-0.13
Ln Average Land Quality	127	-1.32	1.36	-5.84	-0.05
Ln Land Area	127	12.19	1.59	7.87	16.65
Ln Ruggedness	127	4.33	1.09	1.30	6.61
Irrigation Potential Indicator	127	0.72	0.45	0	1
Presence of Desert Indicator	127	0.30	0.46	0	1

Panel B

	(1)	(2)	(3)	(4)	(5)	(6)	(7)	(8)	(9)	(10)	(11)
(1) % Muslim (1900)	1										
(2) Distance to 600 AD Trade Routes	-0.31	1									
(3) Distance to Mecca	-0.44	0.39	1								
(4) Distance to the Coast	0.03	0.15	-0.15	1							
(5) Absolute Latitude	-0.09	-0.48	-0.04	-0.23	1						
(6) Ln Gini Index of Land Quality	0.42	-0.05	-0.23	0.38	0.10	1					
(7) Ln Average Land Quality	-0.57	0.04	0.35	-0.07	0.07	-0.52	1				
(8) Ln Land Area	0.11	0.19	0.06	0.46	-0.13	0.53	-0.21	1			
(9) Ln Ruggedness	-0.06	-0.34	0.07	-0.10	0.19	-0.08	0.29	-0.15	1		
(10) Irrigation Potential Indicator	0.41	0.07	-0.32	0.33	-0.45	0.24	-0.20	0.41	-0.07	1	
(11) Presence of Desert Indicator	0.56	-0.07	-0.36	0.33	-0.10	0.65	-0.56	0.50	-0.16	0.41	1

Appendix Table 1, Panel A, reports summary statistics for the main variables employed in the empirical analysis at the county level. Panel B gives the correlation structure of these variables. The Supplementary Appendix gives detailed variable definitions and data sources.

Appendix Table 2 – Descriptive Statistics and Correlations, Ethnic Group Level

Panel A

Variable	Obs	Mean	Std. Dev.	Min	Max
Muslim Majority (2005)	3181	0.20	0.40	0	1
% Muslim (2005)	3181	0.21	0.36	0	1
Distance to 600 AD Trade Routes	3181	1.34	1.23	0	5.19
Distance to Mecca	3181	5.23	2.76	0.45	12.92
Distance to the Coast	3181	0.45	0.44	0.00	2.15
Absolute Latitude	3181	16.02	14.44	0.00	72.42
Ln Gini Index of Land Quality	3181	-2.19	0.89	-4.61	-0.03
Ln Average Land Quality	3181	-1.03	0.93	-4.60	0.00
Ln Land Area	3181	8.14	1.75	3.04	15.90
Ln Ruggedness	3181	4.14	1.43	0	7.06
Irrigation Potential Indicator	3181	0.25	0.44	0	1
Presence of Desert Indicator	3181	0.05	0.22	0	1

Panel B

	(1)	(2)	(3)	(4)	(5)	(6)	(7)	(8)	(9)	(10)	(11)	(12)
(1) Muslim Majority (2005)	1											
(2) % Muslim (2005)	0.96	1										
(3) Distance to 600 AD Trade Routes	-0.21	-0.22	1									
(4) Distance to Mecca	-0.22	-0.24	0.62	1								
(5) Distance to the Coast	0.06	0.07	-0.21	-0.49	1							
(6) Absolute Latitude	0.09	0.07	-0.42	-0.17	0.01	1						
(7) Ln Gini Index of Land Quality	0.25	0.26	-0.14	-0.21	0.16	0.35	1					
(8) Ln Average Land Quality	-0.28	-0.28	0.01	0.10	-0.14	-0.28	-0.39	1				
(9) Ln Land Area	0.14	0.14	-0.19	-0.21	0.14	0.21	0.43	-0.23	1			
(10) Ln Ruggedness	-0.04	-0.05	-0.26	0.17	-0.13	0.21	-0.01	0.16	-0.09	1		
(11) Irrigation Potential Indicator	0.30	0.31	-0.20	-0.34	0.19	0.11	0.30	-0.15	0.39	-0.19	1	
(12) Presence of Desert Indicator	0.32	0.32	-0.15	-0.16	0.11	0.17	0.28	-0.44	0.32	-0.06	0.32	1

Appendix Table 2, Panel A, reports summary statistics for the main variables employed in the empirical analysis at the ethnic group level. Panel B gives the correlation structure of these variables. The Supplementary Appendix gives detailed variable definitions and data sources.

Appendix Table 3 – Robustness checks

	(1)	(2)	(3)	(4)	(5)	(6)
Sample	Countries	Countries	Countries	Ethnic Groups	Ethnic Groups	Ethnic Groups
DEPENDENT VARIABLE	Muslim Majority Dummy	Share of Muslim in 1900		Muslim Majority Dummy	Share of Muslim in 2005	
Distance to 600 AD Trade Routes	-0.1565*** (0.0459)	-0.1192 (0.1478)		-0.1164*** (0.0325)	-0.2095*** (0.0789)	
Distance to 600 AD Trade Routes Squared		-0.0043 (0.0546)			0.0219 (0.0163)	
Distance to 1800 AD Trade Routes			-0.4980*** (0.1353)			-0.4038*** (0.0723)
Distance to 1800 AD Trade Routes Squared			0.1760*** (0.065)			0.0921*** (0.0134)
Controls	ALL	ALL	ALL	ALL	ALL	ALL
Continental FE	YES	YES	YES	NO	NO	NO
Country FE	NO	NO	NO	YES	YES	YES
Observations	127	127	127	3181	3181	3181
R-squared	0.50	0.62	0.63	0.48	0.54	0.55

Appendix Table 3 reports OLS estimates associating measures of Muslim adherence with geographical variables. Observations are at the level of countries (columns 1 to 3) or ethnic group (columns 4 to 6), the sample is the Old World (Europe, Asia and Africa). In column 1 (4) the dependent variable is a dummy equal to one if the share of Muslim in the country (ethnic group) in 1900 (2005) is greater than 50%, from McCleary and Barro (2005) (World Religion Database). In columns 2 and 3 the dependent variable is the share of Muslim population in 1900 measured at country level, while in columns 5 and 6 the dependent variable is the share of Muslim population in 2005 at the ethnic group level. Included controls are Distance to Mecca, Distance to the Coast, Absolute Latitude, Ln Average Land Quality, Ln Land Area, Ln Ruggedness, an Irrigation Potential Indicator and the Presence of Desert Indicator. The Supplementary Appendix gives detailed variable definitions, data sources and summary statistics for all variables. Columns 1 to 3 (4 to 6) include a set of continental (country) fixed effects. Standard errors, in parentheses, are robust to heteroscedasticity (columns 1 to 3) and clustered at the country level (columns 4 to 6). ***, **, and * indicate statistical significance at the 1%, 5%, and 10% level, respectively.

Appendix Table 4 – Historical Traits of Muslim Communities

Sample	(1) Full Sample	(2) Full Sample	(3) Full Sample	(4) Muslim Share >95%	(5) Muslim Share <5%	(6) Full Sample	(7) Full Sample
DEPENDENT VARIABLE	Jurisdictional Hierarchy	Belief in Moral Gods		Class Stratification		Egalitarian inheritance – Movable Property	Egalitarian inheritance – Land Property
% Muslim (2005)	0.7179*** (0.1845)	0.5868*** (0.0739)				0.1550* (0.0783)	0.1439** (0.0587)
Ln Gini Index of Land Quality			0.0556* (0.0282)	-0.0024 (0.0480)	0.0892*** (0.0317)		
Controls	NO	NO	YES	YES	YES	NO	NO
Country FE	YES	YES	YES	YES	YES	YES	YES
Observations	1183	838	1132	167	664	1042	1000
R-squared	0.32	0.62	0.16	0.05	0.17	0.24	0.26

Appendix Table 4 reports OLS estimates associating Muslim adherence across groups to various societal traits and geographical variables. In column 1 the dependent variable is the degree of jurisdictional hierarchy beyond the local community level. In column 2 the dependent variable is a dummy reflecting whether the local gods are supportive of human morality. In columns 3 to 5 the dependent variable is an indicator whether a group is socially stratified and in columns 6 and 7 the dependent variable reflects whether there is egalitarian inheritance with respect to movable and land property, respectively. In column 4 (5) the sample is restricted to ethnic groups with a share of Muslim population above 95% (below 10%). Observations are at the ethnicity level and the sample comprises of groups in the Old World for which we have created a correspondence between the Ethnologue and the Murdock's Ethnographic Atlas. Controls are Absolute Latitude, Ln Average Land Quality, Ln Land Area, Ln Ruggedness, an Irrigation Potential Indicator and Presence of Desert Indicator. The Supplementary Appendix gives detailed variable definitions, data sources and summary statistics for all variables. Standard errors in parentheses are clustered at the country level. ***, **, and * indicate statistical significance at the 1%, 5%, and 10% level, respectively.