

NBER WORKING PAPER SERIES

WORKER RESPONSES TO SHIRKING UNDER SHARED CAPITALISM

Richard Freeman  
Douglas Kruse  
Joseph Blasi

Working Paper 14227  
<http://www.nber.org/papers/w14227>

NATIONAL BUREAU OF ECONOMIC RESEARCH  
1050 Massachusetts Avenue  
Cambridge, MA 02138  
August 2008

Presented at the Russell Sage/NBER conference in New York City, October 2006, and at the M.I.T. Sloan School of Management, November 2007. The authors wish to thank Eric Maskin and Canice Prendergast for comments on the paper at the Russell Sage/NBER conference. The discussion and footnotes in response to possible objections represent our responses to his very helpful points. An earlier version was presented at the 2004 Association for Comparative Economic Studies conference, San Diego, CA, with valuable comments from Avner Ben-Ner. This paper is part of the National Bureau of Economic Research's Shared Capitalism Research Project, funded by the Russell Sage and Rockefeller Foundations. Additional funding for the General Social Survey questions was provided by the Beyster Institute for Entrepreneurial Employee Ownership, the ESOP Association, the Employee Ownership Foundation, Hewitt Associates, the National Center for Employee Ownership, and the Profit Sharing Council of America. The authors wish to thank Tom Smith with the General Social Survey at the National Opinion Research Center of the University of Chicago and Peter Marsden of Harvard University with the National Organizations Study for their assistance in arranging the shared capitalism segment of both surveys. Refen Koh, Michelle Pinheiro, Rhokeun Park, and Patricia Berhau provided excellent assistance in survey scanning, entry, and verification. The views expressed herein are those of the author(s) and do not necessarily reflect the views of the National Bureau of Economic Research.

NBER working papers are circulated for discussion and comment purposes. They have not been peer-reviewed or been subject to the review by the NBER Board of Directors that accompanies official NBER publications.

© 2008 by Richard Freeman, Douglas Kruse, and Joseph Blasi. All rights reserved. Short sections of text, not to exceed two paragraphs, may be quoted without explicit permission provided that full credit, including © notice, is given to the source.

## WORKER RESPONSES TO SHIRKING UNDER SHARED CAPITALISM

Richard Freeman, Douglas Kruse, and Joseph Blasi

NBER Working Paper No. 14227

August 2008

JEL No. J33,J54,L23

### ABSTRACT

Group incentive systems have to overcome the free rider or 1/N problem, which gives workers an incentive to shirk, if they are to succeed. This paper uses new questions on responses to shirking from the General Social Survey and a special NBER survey of workers at over 300 worksites in 14 companies that have some form of group incentive pay to examine how well workers can monitor their peers and what they do when the peers are not working up to speed. The paper finds that: 1) most workers say that they can detect fellow employees who shirk; 2) many report that they would speak to the shirker or report the behavior to a supervisor, and many report that they did so in the past; 3) the proportion that takes action against shirkers is greatest among workers paid under group incentive systems, in smaller companies, and in companies with good employee-management relations; 4) group incentives interact with high-performance human resource policies such as employee involvement teams, training, task variety, low levels of supervision, and good fixed wages to induce more workers to act against shirking; 5) workers in workplaces where there is more anti-shirking behavior report that co-workers work harder, encourage other workers more, and report that their workplace facility is more effective in ways that should raise productivity and profits.

Richard Freeman  
NBER  
1050 Massachusetts Avenue  
Cambridge, MA 02138  
freeman@nber.org

Douglas Kruse  
School of Management and Labor Relations  
Rutgers University  
94 Rockafeller Road  
Piscataway, NJ 08854  
and NBER  
dkruse@rci.rutgers.edu

Joseph Blasi  
Rutgers University  
School of Management and Labor Relations  
Levin Building  
New Brunswick, NJ 08544  
and NBER  
jrbru@hotmail.com

What do workers do when they see someone slacking off in ways that reduce the productivity of their work group and enterprise?

The rational response depends on the circumstances. In a tournament race for promotion, having a competitor slack off is good news. You don't have to go all out to win the promotion. In a piece-rate pay system where the firm lowers the rate per piece when workers produce more than expected, you will also welcome the shirker. The more other workers shirk, the less likely it is that management will lower the rate per piece and make it harder to earn your weekly pay.

But when part of workers' pay comes in the form of some group incentive such as profit-sharing or share ownership or stock options, a worker who does not do his or her job takes "money out of the pocket" of other workers. The group would be better off if someone acted against the shirker. But standard analysis suggests that it will rarely be rational for anyone to intervene. The costs of intervening with the shirker fall on the intervener but that person gets only part of the benefit (in an N worker group the worker who intervenes gains  $1/N$ th of the benefit going to workers and none of the benefit that goes to capital). The implication is that rational workers will not act against a shirker just as rational players should not cooperate in a prisoner's dilemma game. Group incentive systems are thus doomed to failure.

The facts for labor practices as for prisoner's dilemma and other games of cooperation are different. Team production and group incentive plans, which succeed only if they overcome free riding and shirking, are widespread in modern economies. Since workers often have better information than management on what fellow workers are doing, worker responses to shirking are critical to the success or failure of these schemes. Many workplaces develop cultures where workers discourage others from shirking. Lab experiments find cooperative behavior in

collective goods games when game theory rationality predicts that the rational player defects. Directly relevant to our analysis, Fehr and Gächter (2000) have found that individuals punish defectors in laboratory experiments even when it is not in their individual self-interest to do so, due to norms of reciprocity that are strong among many individuals. Peer monitoring has also been found in group loans in Third World credit markets (Stiglitz 1990). Punishing free riders at a workplace may also benefit the intervener in the long run if other members of the group appreciate that person's action against free riders. They may reap long term rewards in the form of higher esteem and greater influence within a group. Self-interest aside, the evidence from anthropologists that voluntarily "policing" cooperation occurs in many societies suggests that it may be hardwired from evolution. Some economists have suggested how ostracism can be effective in promoting cooperation (Hirshleifer and Rasmusen 2003).

This study examines worker reactions to shirking by analyzing questions that we developed and put on the 2002 and 2006 General Social Surveys (GSS) and on surveys of 14 companies that have some forms of group incentive plans that we conducted through the NBER. We asked workers about the ease of observing co-workers' performance, and the likelihood of responding to poor work performance. Our analysis of these questions, together with questions about incentive systems, firm human resource policies, and other aspects of the workplace, show:

1. Most workers believe that they can readily detect shirking by fellow employees.
2. Workers are most likely to take action against shirkers in workplaces where employees are paid by some form of "shared capitalism" – by which we mean profit sharing, gain sharing, stock options, or other forms of ownership – and they participate in decisions or work in team settings.

3. Responses to these forms of group incentive pay are largest when they trust management and have good employee management relations, and when the firm adopts high-performance human resource policies, low levels of supervision, and pays fixed wages at or above market levels along with the incentive pay.

4. Consistent with the theory of free riding, anti-shirking behavior is greater in smaller firms and is particularly strong in small firms with shared capitalist pay.

5. Workers in workplaces where there is more anti-shirking behavior report that co-workers work harder, encourage other workers more, and report that their workplace facility is more effective in several dimensions related to productivity and profits.

The bottom line is that “shared capitalist“ arrangements – defined broadly as those in which firms share rewards and decision-making with workers -- and positive labor relations encourage workers to act against shirking behavior and thus strengthen the potential for group incentive systems and team production to overcome the free rider problem and succeed.

### **Group incentives and monitoring colleagues**

When will a worker act against a shirking fellow employee?

The natural economics answer is that a worker will so act when it pays off for that person, which almost invariably requires group incentive pay. Building on Drago and Garvey (1998), it is easy to show that workers are more likely to intervene the higher the amount of the group incentive, the higher the probability that intervening increases the performance of the co-worker, the lower the cost of intervening (which may depend on individual incentives), and the smaller the number of co-workers. In addition, workers may gain respect from fellow workers and supervisors, which can translate into greater chances of promotion in the future. Workers

may discourage "shirkers" through peer pressure and non pecuniary sanctions such as social ostracism, personal guilt, or shame (Kandel and Lazear 1991). Since the 1/N problem is smaller at small workplaces, cooperative agreements should be easier to establish and maintain in small companies than in large ones.

Workers can also engage in punishing behavior to enforce group norms of high effort, and change the behavior of free riders. Punishment may be effective in counteracting the free rider effect per the experimental results of Carpenter (2004). He explains his results by noting that an increase in the size of a group has two opposing effects: it "forces monitors to spread their resources thinner which might lead to more free riding," but "there are also more people monitoring each free rider so it is not obvious whether the total amount of punishment each free rider receives will increase or decrease" (2004: 4). Prendergast suggests that monitoring with a sufficiently low cost can negate the free rider problem but notes that "empirical evidence on peer pressure reveals behavioral responses different from those posited in the theory".<sup>1</sup>

Finally in the workplace setting, management may seek to develop a corporate culture that emphasizes company spirit, promotes group cooperation, encourages social enforcement mechanisms, and so forth in order to encourage cooperative actions (Weitzman and Kruse, 1990; Blasi, Conte, and Kruse, 1996; Blasi, Kruse, and Bernstein, 2003: 226-228). Fudenberg and Maskin (1986) show how the free rider problem can be overcome in an ongoing relationship by a cooperative agreement among participants. Using artificial agent modeling with small groups, Axelrod (1997) has shown how mutual cooperation can develop among agents through

---

<sup>1</sup> Prendergast cites Weiss' study of workers in a pharmaceutical company (1987) and Hansen's examination (1997) of the incentives of telephone operators for a large financial corporation. Both found that group incentives improved the performance of workers who were less productive under individual schemes but decreased the performance of

reciprocity. Klos and Nooteboom (2001) explore the creation of interaction networks that have trust as a major component.

Whatever model one uses to explain punishment of free riders, workers should be more likely to act against shirker when they: a) have some financial interest in the performance of the firm; b) regularly participate in workplace decisions, which should reduce the cost of speaking out; and c) have trust in management and good labor-management relations, since in those situations, they can reasonably expect the firm to reward them for helping to reduce shirking. If you don't trust management, you can hardly be expected to report shirking to management. If you regard labor-management relations as poor, you may view shirking as a justifiable response to management's poor treatment of workers.

## **Data**

Our study asked about worker responses to shirker behavior on two datasets. The first dataset comes from the 2002 and 2006 General Social Surveys (GSS), on which we placed several questions on shared capitalism programs. The GSS is a national area probability sample of non institutionalized adults conducted by NORC. The 2002 GSS has a sample of 1,145 employees, and the 2006 GSS has a sample of 1,081 employees, in for-profit companies. The second dataset is based on surveys of employees in 14 companies with over 300 worksites that had one or more shared capitalist incentive program in 2001-2006 that we conducted as part of the NBER Shared Capitalism research program.<sup>2</sup> The response rates from employees averaged

---

more productive workers

<sup>2</sup> We drew up a sample of firms varying in size, industry, and type of program, and contacted them in various ways to participate. As is usual in this sort of research, we were able to convince only some firms to participate. Once firms agreed to the survey, we surveyed either all employees or a random sample of employees. The survey included core questions common across all companies, and some questions of special interest or relevance to that

53% across the 14 companies. A total of 41,206 respondents provided usable surveys. Question wordings and descriptive statistics for both surveys are in Appendix A.

Neither survey is ideal. The GSS is nationally representative, but has limited numbers of persons with different forms of compensation arrangements, which makes it hard to reach statistically valid conclusions in some areas. Because it is a small national sample, workers are likely to all be employed by different firms so that we view comparisons among workers as comparisons across firms. The NBER has a large number of respondents but they are taken from a sample of firms that is non random. Because the NBER survey covers a small number of firms, much of the variation comes from variation among workers within firms, and we generally include firm fixed effects in analyses to focus on this variation. By combining analyses of the small national sample that lives on cross-company variation and the larger non-random sample of workers from participating companies that lives on within- company variation, we hopefully surmount these weaknesses and can reach conclusions that have general validity.

The innovation of our study is the new questions about workers' ability to detect the performance of other workers at their workplace and their actions if they observed shirking. We asked about the ability of workers to observe their peers' effort because that is a necessary precondition for acting against shirking:

*In your job how easy is it for you to see whether your co-workers are working well or poorly? On a scale of 0 to 10 please describe with 0 meaning not at all easy to see and 10 meaning very easy to see*

---

company. Six company surveys were conducted over the web, seven company surveys were done on paper, and one survey was done using both the web and paper surveys. Two firms that agreed to participate were bought out by other firms, who did not want to cooperate with the study.



Figure 1A displays the frequency distribution of answers from the GSS. The distribution is concentrated at the upper end, with 49% of workers giving the highest possible answer about the ease of detecting how co-workers are doing, and another 28% giving answers in the 7-9 categories. Responses are also bunched at the 0 category as well, with 8% of workers giving this answer but otherwise there is a paucity of responses at the low end. Thus, the vast majority of workers think they have a good idea of how hard their fellow employees are working. Looking at which employees report being able to observe co-workers shows a priori sensible variation among employees. Workers who answered with a 7 or more to the question reported disproportionately that they work in a team as opposed to by themselves, and that they rely on coworkers and supervisors for help, compared to workers who answered 3 or less on seeing how coworkers perform (data not shown but available). In addition, 13% who answered 7 or higher reported that they are managers compared to 7% of those answered 3 or less.

Figure 1B displays the frequency distribution of answers from the NBER survey. The largest single group of respondents gave the maximum answer to their ability to observe their fellow employees, but the distribution is less concentrated than the distribution in the GSS, with proportionately half as many workers giving the 10 response. Still, 62% of respondents gave a response of 7 or more to the observability question.

Given that most workers say that they can observe the effort of co-workers, what do they do if they catch someone shirking? Our question was:

*If you were to see a fellow employee not working as hard or well as he or she should, how likely would you be to:*

- A. Talk directly to the employee;*
- B. Speak to your supervisor or manager;*

*C. Do nothing*

*D. (contained on only some company surveys) Talk about it in a work group or team<sup>3</sup>;*

The responses use a four-point scale: not at all likely, not very likely, somewhat likely, and very likely. As a simple way to display the responses to these questions, we formed a summated rating anti-shirking index reflecting the likelihood of intervention against shirkers using a 1 to 4 scale, where 1 measures the lowest intervention and 4 the greatest intervention, by simply adding the values of responses across questions (Bartholemew et al, 2002). The anti-shirking index ranges from 3 to 12 for the observations based on the A to C responses and from 4 to 16 for the smaller sample for which we asked part D as well. In this ordering a 12 means that the worker reported that it was very likely they would talk to the shirking employee and very likely that they would talk to the supervisor and not at all likely that they would do nothing. A 3 means that they said it was very unlikely they would talk to the shirking employee, very unlikely they would talk to the supervisor, and very likely they would do nothing.

Figure 2A summarizes the responses from the GSS. It shows that the summary statistic differentiates people in a relatively continuous way. If we organize the data into five bins, grouping the 3 and 4 responses, and the 5 and 6 responses, and so on, the distribution looks roughly uniform. The anti-shirking index has a mean of 7.81 and a standard deviation of 2.94. Figure 2B gives the anti-shirking index for the NBER survey data. With the larger sample, the distribution has proportionately more persons in the middle of the distribution, which gives it a rough normal look. But again, there is wide variation. Some people are likely to take action against a shirker and some are likely to do little. Our goal is to find out what differentiates workers in this form of behavior.

Table 1 shows for both data sets the proportion of workers who said it was likely or not likely that they would take one of the actions in response to shirking behavior by a fellow employee. One finding is that more workers in the GSS sample than in the NBER companies say they would be “very likely” to take action against shirkers, which would seem to go against the idea that shared capitalism encourages anti-shirking activities; this difference, however, is primarily due to the larger establishment sizes in the NBER sample, and the difference is reversed when controlling for this and other factors distinguishing the samples.<sup>4</sup> In addition, the table shows that the greater concentration of responses at the upper end of the distribution in the GSS than in the NBER data set is due to the great proportion in the former who say they would talk to the shirking employee: 32.4% in the GSS versus 16.7% in the NBER dataset. In the GSS proportionately more workers say that it is very likely that they would talk to an employee than would talk to a supervisor or manager, whereas in the NBER data set about the same proportion say it is very likely they would talk to the shirker as to a manager.<sup>5</sup>

To move from hypothetical responses to actual behavior, in some company surveys we added a question, "Have you ever seen one of your fellow employees not working as hard or well as he or she should over an extended time period?" Over half, 59%, of the respondents said yes.<sup>6</sup>

---

3 This option was not included in the 2002 GSS and the early NBER surveys.

4 GSS employees are also younger on average, and more likely to say they can see how well their co-workers are working. When these two variables and establishment size are used in the GSS sample to predict anti-shirking, the predicted mean for the NBER sample is less than the actual mean, indicating that the NBER employees are generally more likely than would be expected to take action against shirkers.

5 Since some respondents said that they did not have a supervisor or manager the sample size of answers to that question is smaller than the sample size for the other questions. One possible objection to the anti-shirking index is that it combines disparate behaviors that may substitute for each other—for example, a worker may choose between talking to the shirker or supervisor but not want to do both. We find, however, that the responses are highly correlated (the alpha for the index is .80 in the GSS data and .69 in the NBER data). We also present results for each response separately in Table 4a and find results consistent with those using the anti-shirking index.

6 The mean of the anti-shirking index for the 41% of workers who said they have not seen a co-worker shirking is not significantly different from the mean for the 59%, suggesting that there is no systematic difference in

We then asked what they did in response. As seen in Table 2, 34% of the employees talked to the shirker, 46% talked to a supervisor or manager, 20% talked about it in a work group or team, 5% did something else, and 29% did nothing (row 1). Most important, these answers correlate highly with the respondents' reported likelihood of taking this action, as shown in rows 2 to 5: for example, 82% of those who said they were very likely to talk to the shirker actually did so, while only 6% of those who said it was not likely they would talk to the shirker actually did so.

From the tabulations in Figures 1a, 1b, 2a, and 2b, and Tables 1 and 2, we conclude that: most workers can tell when a fellow employee is shirking or not; there is wide variation in what they will do when faced with a situation in which someone shirks; and that this variation reflects variation in actual past behavior.

### **Shared Capitalist Arrangements: Group Incentives and Labor Policies**

We have a wide set of measures of the group incentives and labor policies that we expect to affect worker responses to shirking behavior. As far as we know, ours is the most comprehensive survey of group incentive policies in the United States. The overall prevalence of shared capitalist compensation is presented in Appendix Tables A-1 and A-2. The most important result is that 45% of the for-profit private sector employees in the GSS sample report participating in some kind of shared capitalism program (36% in profit sharing, 25% in gain-sharing, 19% in employee ownership, and 11% in stock options). This gives us good variation for examining the relation of these programs to worker outcomes. Regarding other work policies, the 2002 and 2006 GSS asked whether employees normally work as part of a team and how

---

willingness to take action against shirkers between these two groups.

often they participate with others in determining how things are done at their job. Over half (58%) of private sector workers report working in a team setting, and 44% report that they often participate with others in helping set the way things are done on a job.

The prevalence of group incentives is necessarily higher in the NBER sample, since these firms were selected on the basis of having one or more shared capitalism programs. About two-thirds report profit sharing (71%) and owning company stock (64%), while about one-fifth report gainsharing (21%) and holding stock options (22%). The figure for working as part of a team (59%) is similar to that for the GSS, and about one-third (35%) report being part of an employee involvement team.

As a first step in assessing the relation of shared capitalism to employee outcomes, we constructed a thermometer-style index of shared capitalism, which assigns points based on coverage by shared capitalism programs and the size of the financial stakes. This index is described in Appendix B. We also present results breaking out the different forms of shared capitalism types and intensities.

### **Shared Capitalist Incentives and Shirking**

To examine the determinants of anti-shirking behavior, we first regressed the anti-shirking index on organizational/company policy variables and job and demographic factors. As seen in Table 3, the shared capitalism index is linked to greater anti-shirking activity in both the GSS and NBER datasets. Among the covariates, the ease of observing co-workers has a strong positive effect on the anti-shirking index, consistent with the idea that workers will be more likely to take action the greater the observability of shirking behavior. The participation variables have a substantial positive impact on the anti-shirking index in both datasets, as does

job security in the NBER dataset. Job task variety also has a strong positive effect (consistent with Drago and Garvey, 1998), indicating that knowledge of how to help is greater, and the costs of helping are lower, when the worker has a broader base of skills and overlap of tasks with the shirking co-worker. Those who are supervised more closely are less likely to engage in anti-shirking behavior in the NBER dataset, perhaps reflecting a belief among closely-supervised workers that dealing with shirking is the supervisor's responsibility (to be addressed in Table 8). Finally, the data shows that the size of the workplace has a strong impact on anti-shirking behavior, with workers more likely to intervene more to stop shirking in a smaller workplace, where the shirking of one co-worker is more likely to affect them more than it would in a larger workplace.

The specific behaviors making up the anti-shirking index are analyzed separately in Tables 4a and 4b. The shared capitalism index is a positive predictor of each type of anti-shirking behavior in both the GSS and NBER data, except for the likelihood of talking in a work group in the GSS data. It seems that many workers with shared capitalism do not wish to talk about the shirker to the group in the shirker's presence as they might find this embarrassing (consistent with concerns by workers that the shirker might resent them or other employees would react poorly, as presented in Table 8.)

#### *Types of shared capitalism*

Which shared capitalism policies are responsible for the results given in our indices? Table 6 uses different types and intensities of shared capitalism to predict taking action against shirking. In the GSS data, the most important factors behind anti-shirking activity is the presence of profit sharing and gain-sharing (col. 1). In the NBER data, it is the intensity rather

than the presence of profit sharing and gain sharing that seems to matter. The NBER results in column 2 show a very strong effect of the profit/gain sharing bonus size (not eligibility), along with strong positive effects of stock option holding and owning any company stock.

When the richer NBER data are used for a more detailed breakdown of shared capitalism in column 3 (along with more extensive controls, mirroring the specification in Table 3), anti-shirking activity is strongly related to both profit sharing bonus size and gain sharing bonus size. There is one seemingly odd result, however. The negative coefficient on eligibility combined with the positive coefficient on bonus size indicate that when the profit share is small, those eligible for profit sharing are less likely than non-eligible employees to take action. As will be seen in Table 8, shared capitalism appears to increase the fear that co-workers will resent any anti-shirking action, so that low levels of profit sharing may have a negative effect on anti-shirking activity but this reluctance is apparently overcome as the bonus grows larger. For gain sharing, by contrast, simple eligibility increases anti-shirking behavior.

Consistent with the results of Drago and Garvey (1998), the effect of greater individual bonuses is negative and significant on anti-shirking behavior (column 3). Apparently, individual bonuses focus workers on their own work and may lead them to see co-workers as competitors (or at least not cooperators). By contrast, workers who received a stock option grant last year were more likely to take action against shirkers, although the size of the grant, and of one's holdings, do not seem to make a difference (col. 3). Owning company stock is no longer a significant predictor in column 3, although in supplementary regressions (not reported here) we find positive associations with some forms of ownership -- ESPP participation, holding stock after exercising options, holding stock purchased on the open market, and ESOP membership (this

latter result only when company fixed effects are not used<sup>7</sup>). That ownership appears to operate through simply owning stock and not the size of one's stake is consistent with findings from several other studies, which they attribute to higher organizational commitment (reviewed in Kruse and Blasi, 1997). Eight out of ten of the workers reporting employee ownership in the 2002 GSS report they also have some form of profit/gain sharing or stock options, which indicates that some managers recognize the value of combining short-term rewards and long-term equity (Blasi, Kruse, and Freeman 2006: 7)

#### *Before/After on Profit Sharing*

The cross section data presented so far are consistent with the theory that shared capitalism affect the response of workers to shirking co-workers but cannot rule out the possibility that there are missing variables or other processes that affect results. As we were conducting our survey, one firm told us that they intended to introduce a new profit-sharing plan that offered the chance to conduct a before/after analysis as well as a cross-section analysis of worker responses to group incentives. Accordingly, we administered our survey twice at this firm, six months apart, with the first survey coming before the firm introduced a new profit-sharing plan, and the second survey coming after the firm had introduced the new plan.<sup>8</sup>

As shown in Table 6, the introduction of the profit-sharing plan led to a jump in the percent of employees saying they are eligible for profit sharing from 59% at the first survey to

---

<sup>7</sup> Company fixed effects are probably inappropriate to use in analyzing the effects of ESOP membership, since ERISA rules provide strict guidelines to ensure broad coverage. The small number of non-ESOP members are likely to be very different from the ESOP members within a firm, and the effects of ESOP membership may be better judged by comparing ESOP members to otherwise-similar workers in other firms.

<sup>8</sup> The analyses presented so far use only the responses to the second survey at this company, to avoid having more than one survey from some employees. The surveys did not have individual identifiers so respondents could not be tracked across the two surveys. The higher response rate in the second survey is due in part to the provision of a \$5 bill accompanying this survey, but the surveys appear equally representative since the means on all variables (apart



88% at the second survey. Apart from this, only two variables in the entire survey showed significant changes between the surveys: the percent who say they were very likely to talk to a shirking co-worker (increase from 42% to 55%), and the percent who say that they would do something about a shirker because poor performance would hurt the bonus or stock value (from 39% to 56%). The fact that these are the only three variables that changed between the surveys indicates that there were not compositional changes or other policy changes that affected the results. These results lend support to the prior findings, pointing toward a positive effect of profit sharing in attempts to combat co-worker shirking.

### *Complementarities*

Analysis of the decision equation for workers to intervene against shirking suggests that some of the factors that influence behavior should enter equations in an interactive rather than linear way.. The worker decides to intervene against a shirker when the expected benefits of intervening exceed the costs:  $p(G) - C$ , where  $p$  is the probability that the intervention will succeed,  $G$  is the gain to the worker and  $C$  is the cost. The financial incentive would affect  $G$ ; participation should affect  $p$  and the cost. Labor-management relations  $L-M$  might affect both  $G$  and  $p$ . More complicated analyses, in which the worker is assumed to take account of the possible behavior of other employees, lead to even more complexity, which we will ignore. Instead, we have looked for potential interactions among key variables in determining anti-shirking behavior.

Using the nationally representative GSS data, Table 7a examines how shared capitalism interacts with company size, and Table 7b examines how it interacts with other company

---

from those highlighted in Table 8) were not significantly different between the two surveys.

policies. Shared capitalism is most strongly associated with taking action against shirkers in the smallest workplaces, as shown in column 1 of Table 7a. The supports the idea that the 1/N problem will be lower in smaller workplaces (note that the base estimates continue to show more anti-shirking activity among workers in small companies without profit/gain sharing, indicating that shirking may be perceived as more of an economic threat in small enterprises generally). The shared capitalist index effect is also significant in the next two larger size classes, and positive although not significant in the two largest classes. An equally or even more important factor, however, appears to be the quality of the relationship with management. As shown in column 2, shared capitalism is associated with anti-shirking activity most strongly when combined with a high level of trust in management. While this could simply reflect column 1's finding of a more positive effect in small companies, the results in column 2 are maintained when the smallest companies are deleted (not shown here). Similar results are obtained when shared capitalism is interacted with view of employee-management relations.<sup>9</sup> These results indicate that employees are likely to take action to increase productivity only when they are confident that any gains will in fact be shared with workers. This suggests that large companies can use improved employee-management relations to counteract the 1/N problem.<sup>10</sup>

---

9 The correlation between trust in management and view of employee management relations is .60, indicating they appear to represent a common attitude.

10 We examined other ways in which shared capitalism arrangements may interact with workplace policies. The positive shared capitalism effect on the likelihood of taking action against shirkers is lower among those who plan to look for a new job in the next year (presumably because they will not be around to receive the profit share), and in companies with high injury rates (which could worsen management employee relations and decrease expected tenure). While some models predict that financial participation will have a positive interaction with participation in decision-making in affecting worker motivation and performance (e.g., Ben-Ner and Jones, 1995), we do not find significant interactions using the GSS participation measures (which are subjective and may mediate the effects of shared capitalism). Further, we did not find that employee stock ownership or holding stock options alone were related to anti-shirking behavior. This is consistent with the research literature and our findings in this and related papers in the NBER project that employee ownership and stock options generally interact with company culture in impacting performance, although there is evidence that employee ownership directly improves commitment. Also,

This result does not, however, carry over to within-company comparisons in the NBER data. The most positive effect of shared capitalism on anti-shirking activity still occurs among employees with the most trust in management, but the shared capitalism index has a positive effect even when the NBER employees disagree that management is trustworthy. We do not have a ready explanation for the difference between the two datasets. Because almost all employees in the GSS sample work in different companies, we do not know if the positive interaction between shared capitalism and employee-management relations in that data set reflects the effect of companies with good employee-management relations in general, or of individuals who perceive good relations within a company (even if their co-workers do not). We did some exploration of company and individual differences in the NBER data and found that anti-shirking behavior is generally strong in companies with higher average grades of employee-management relations and trust in management, no matter the individual employee's grades of these items. This suggests the importance of company culture in fostering an environment encouraging peer pressure.

The role of complementary company policies is explored with the NBER data in Table 7b. Column 1 essentially replicates the specification from Table 3, adding a control for the worker's perception that his or her fixed pay is at or above market level. The strong positive effect of the wage variable is consistent with efficiency wage theories which posit that worker behavior can be improved when they are better paid. The shared capitalism index remains a positive predictor as this control is introduced. The effect appears to be contingent, however, on

---

as noted, it is possible that some managers combine profit sharing and equity participation in order to get synergy between them.

other workplace policies. The shared capitalist index has a strong positive interaction with a high performance policy index (col. 2), supporting the idea of complementarities among these policies in affecting worker behavior.<sup>11</sup> The shared capitalist index also has a strong negative interaction with closeness of supervision, and a positive interaction with having fixed pay at or above market level. The negative supervision interaction may reflect a negative reaction to the mixed message received by workers: we want you to work harder due to company-based pay, but we're nonetheless going to watch you very closely. In this case the shared capitalism might be perceived by workers as primarily risk-sharing. The positive interaction with having fixed pay at or above the market level may reflect a more positive response by workers when the company seems to be truly sharing, and not asking the worker to sacrifice pay levels in exchange for shared capitalist incentives. Forms of employee ownership that are combined with below-market pay might not be optimal for anti-shirking behavior because the incentive is diluted through what workers perceive as wage substitution.

These interaction results for supervision and high-performance policies are illustrated in Figure 3. This figure shows how there is a positive relation between shared capitalism and the anti-shirking index only when there are high-performance policies and average or low levels of supervision. Otherwise the relationship is negative.

Thus, incentive intensity is strongly related to anti-shirking activity, but appears to work best as part of a high-performance work system where workers are paid well and not supervised too closely. These results are consistent with the findings of Ichniowski et al. that workplace

---

<sup>11</sup> These results showing the value of embedding such participation in a system of high performance work policies are consistent with the analysis of Appelbaum, Bailey, Berg, and Kalleberg (2000) and Huselid (1995).

productivity is improved by combining several high-performance HR policies, and show that worker response to shirkers is likely an important mechanism in the higher productivity.

### *Reasons For/Against Acting Against Shirkers*

The dynamics underlying taking action against shirkers are explored more fully in Table 8, which records employee responses to questions about why they might or might not do something about a shirking co-worker. These questions were asked on only some of our company surveys. Over half of workers said they would be likely to do something because the employee's performance could affect their own jobs (56%), reflecting interdependent work where cooperation can be especially productive. Almost half of workers said they would do something because they would want to keep work standards high (47%), which can be seen as reflecting a cooperative solution to reinforce high work norms. Almost as many workers expressed a financial incentive, saying the poor performance would lead to lower bonus or stock value (43%), while 45% said they simply like helping others and 31% said the employee might help them in the future.

The responses are related to level of participation in shared capitalism. For example, the percent saying that poor performance would lead to lower bonus or stock value is almost twice as high among those with a high value on the shared capitalism index (58%, in col. 4) relative to those with a low value on the index (32% in col. 2). Similarly, the former group is more likely to say they would do it to keep work standard high (59% compared to 42%). Column 5 shows that the shared capitalism index is a strong predictor of five of the reasons for taking action.<sup>12</sup>

---

<sup>12</sup> One possible objection to our focus on shared capitalism is that there are many reasons workers take action against shirkers, as shown in this table. Of course, workers report and probably have a variety of reasons -- which may also include simply noticing incompetence, as noted by Erik Maskin in discussing our paper -- and we do not

The predominant reason for not taking action against shirkers is that it's seen as the supervisor's job (45%) followed closely by the fear that the shirking employee would resent it (41%). About one-fourth (23%) feared that other employees would react poorly, while less than one-tenth (8%) directly expressed free ridership by saying that some other employee would probably take action. The shared capitalism index is a strong predictor of the fear that the shirking employee would resent the action, perhaps because the intervener would be seen as acting out of a financial concern rather than out of concern for the worker. As noted earlier, this may help explain why very low levels of profit sharing appear to be associated with reduced likelihood of taking action against shirkers—an effect that is more than counterbalanced by other reasons as the bonus size grows. The shared capitalist index also, not surprisingly, predicts a lower likelihood that the employee will say there's no financial benefit or "nothing in it for me personally" (col. 5). Therefore these data are consistent with the idea that shared capitalism can affect worker behavior.

#### *Outcomes of Anti-shirking Activity*

What happened as a result of the action? The data in Table 9 point up one of the dangers of taking action, as one-third (35%) of the workers said that the employee who was not working well resented it. The most likely outcome, however, was that other employees appreciated the action (45%), while almost as many said the supervisor appreciated it (40%), and just over one-third said that the employee's performance improved (36%).

---

pretend that workers have the simple motive of “anti-shirking” in their minds, or that shared capitalism is the only motivator. These results show that shared capitalism is not related to two of the key reasons for taking action (“I like helping others” and “Employee may help me in the future”), but is clearly related to several reasons that reflect a concern with site performance efficiency.

Does it help economic performance? Only a minority of workers report that the employee's performance improved, but this may still be enough to make a difference in workplace performance. Also, apart from actual anti-shirking actions, people may work harder simply knowing that their co-workers are likely to do something if they see signs of shirking. We do not have hard performance data, but we do have several survey measures of co-worker and facility performance that show a strong relationship with our anti-shirking measures. Table 10 shows that those who report a higher likelihood of talking to a shirker, and a lower likelihood of doing nothing, rate their co-workers' effort higher on a 0-10 scale. The anti-shirking index is very strongly related not just to this measure, but also to a perception that workers tend to encourage each other, and to ratings of the facility on five specific measures of performance. Since several of these measures involve workers reporting on the behavior of others, it lessens the probability that that the interveners are putting a good spin on their behavior by reporting higher performance, as one reviewer has cautioned. To check the possibility that this simply reflects individual characteristics (e.g., greater optimism about company performance among those who say they would take action against shirkers), we also calculated these relationships at the site level and found that worksites with higher average scores on the anti-shirking index also had significantly higher average evaluations of workplace performance. This is illustrated in Figure 4 for one of our performance measures (evaluations of co-workers performance).<sup>13</sup>

Therefore this does not simply reflect an individual reporting phenomenon: shared views of

---

<sup>13</sup> We also find that site-level averages of the anti-shirking index are strongly related to site-level averages of a worker-reported performance index (containing the five items from the bottom of Table 10) and employee loyalty to the organization, although there is no strong relationship to site-level averages of willingness to work hard and turnover intention. For one large multinational, the dataset has a number of hard operational measures of efficiency, but only at an aggregate division level, which makes analysis problematic.

higher performance in a workplace are related to shared commitments to take action against shirkers. It appears that the propensity for anti-shirking activity does make a difference in performance.

One possible objection to these findings is that some production processes are difficult to supervise by managers so that work is arranged to rely on peer intervention. Shared capitalism may be used not to encourage anti-shirking behavior, but directly to deter shirking, so that peer intervention and shared capitalism are both consequences of technologies rather than causally related to each other. Our pre/post results in Table 6 go against this explanation. We also tested this by examining the relationship in different industries, and by controlling for detailed manufacturing technologies (in our diversified multinational firm with diverse technologies such as plastics and aerospace). The shared capitalism effect does not disappear, but in fact gets slightly stronger with more detailed controls for production technologies, making us more confident that anti-shirking intentions and behavior are a result of shared capitalism and company culture.<sup>14</sup>

## **Conclusion**

This study has examined employee responses to new questions on the 2002 and 2006 General Social Surveys and a large database of NBER employee surveys on whether workers can

---

14 One limitation of our study is the lack of a measure of shirking per se. However, we did ask each employee in two companies covering to respond on a 1-5 scale whether “There are days when I don’t put much effort into my job.” Analysis of this variable indicates that workers reporting high effort are the ones who are more likely to intervene against shirkers. Moreover, there is no direct relationship between the shared capitalism index and increased individual effort. This reflects the finding that the principal impact of shared capitalism appears to work in combination with various aspects of company culture such as trust, high performance work systems, and fixed wages at or above market. This suggests that shared capitalism alone nor unique production systems dependent on technologies are not creating anti-shirking work systems, but rather that shared capitalism enhances anti-shirking together with company culture, and shared capitalism and positive company culture also impact the potential shirker’s level of effort. These additional analyses are available from the authors.



easily observe whether co-workers are shirking and how workers respond to shirking. The answers to the new questions provide valuable insight into the likely magnitude of mutual monitoring and peer pressure against shirking behavior. They show that most workers believe that they are able to observe the effort/activity of fellow workers, which is the first prerequisite for mutual monitoring and peer pressure against shirking to work. In addition, about half of the work force says that they would be very likely to respond to poor job performance by co-workers, with more saying that they would talk to the shirker rather than reporting the behavior to management. While there are some demographic correlates to responding against shirking, workplace factors are more strongly related to employee efforts to reduce shirking. This conflicts with the claim that broad-based incentives will be weak for everyone because of free riding.<sup>15</sup>

Employees respond more against shirking in workplaces with shared capitalism institutions, and the findings suggest important complementarities between shared capitalism and high-performance policies, supervision intensity, and being paid at least the market wage.

---

<sup>15</sup> The standard theory does not predict no anti-shirking intervention but only that it is likely to be suboptimal. As our discussant Eric Maskin noted, there is “no way of telling what optimal intervention would be.” Our study does suggest, however, how the corporation can be structured to increase anti-shirking behavior and performance.

## APPENDIX A: Variable definitions and descriptive statistics

### MONITORING AND RESPONDING TO SHIRKING

**Ease of seeing how well co-workers are working** (GSS and NBER): "In your job how easy is it for you to see whether your co-workers are working well or poorly?" (0-10 scale, 0=not at all easy to see and 10=very easy to see), GSS mean=7.74, s.d.=3.16, n=2192, NBER mean=6.81, s.d.=2.73, n=40971.

**Potential employee actions against shirkers** (GSS and NBER): "If you were to see a fellow employee not working as hard or well as he or she should, how likely would you be to:

- a) Talk directly to the employee
- b) Speak to your supervisor or manager
- c) Talk about it in a work group or team
- d) Do nothing"

See distribution of answers in Table 1.

**Anti-shirking index:** Answers to above questions were coded on a 1-4 scale (1=not at all likely, 4=very likely), and scales were added for "talk directly to the employee," "speak to your supervisor or manager," and "do nothing"(reverse-scored)(3-12 scale). GSS alpha=.795, mean=7.81, s.d.=2.94, n=2115, NBER alpha=.69, mean=7.57, s.d.=2.49, n=35869.

**Past employee actions against shirkers** (NBER):

"Have you ever seen one of your fellow employees not working as hard or well as he or she should over an extended time period?" (0=no, 1=yes), Mean=.586, n=32010.

If responded "yes", then "What action, if any, did you take?"

- a) Talk directly to the employee,
- b) Speak to your supervisor or manager,
- c) Talk about it in a work group or team,
- d) Do nothing"

See distribution of answers in Table 2.

"What was the outcome of your actions?"

- Employee not working well resented it
- Other employees appreciated it
- Supervisor appreciated it
- Employee not working well improved
- Other"

See distribution of answers in Table 9.

**Why people do or do not act against shirkers** (NBER):

"Why might you be *likely to do something* when a fellow employee is not working as hard or well as he or she should? (Mark all that apply)

I like helping others

Employee might help me in the future

Poor performance will cost me and other employees in bonus or stock value

Other employees appreciate it when someone steps forward

Want to keep work standards high

Employees poor performance could affect my own job

Other (What?)

Why might you be *likely to do nothing* when a fellow employee is not working as hard or well as he or she should? (Mark all that apply)

Employee not working well would resent it

Other employees would react poorly

It's the supervisor's job, not mine

Some other employee will probably take action

Some other employee could take care of it

There's no financial benefit for me

Nothing in it for me personally

Other (What?)"

See distribution of answers in Table 8.

## COMPENSATION

**Shared capitalism index (GSS):** 8-point index with one point each for profit sharing eligibility, gain sharing eligibility, owning any company stock, holding any stock options, receiving a profit sharing bonus in the past year, receiving a gain sharing bonus in the past year, having an above-median profit- and gain sharing bonus as a percent of pay, and having an above-median company stock holding as a percent of pay. Mean=1.48, s.d.=2.14, n=1919

**Shared capitalism index (NBER):** 10-point index with all items in GS index, plus one point each for receiving a stock option grant in the past year, and having above-median stock option holdings as a percent of pay. Mean=3.60, s.d.=2.65, n=40522

**Profit sharing (GSS and NBER):** "In your job are you eligible for any type of performance-based pay, such as individual or group bonuses, or any type of profit-sharing? What does the size of these performance-based payments depend on? Company profits or performance" (0=no, 1=yes), GSS mean=.372, n=2184, NBER mean=.713, n=41018

**Profit sharing as % of pay (GSS and NBER):** If "yes" to profit sharing, answer to "What was the approximate total dollar value of the payment(s) you received [in the most

recent year of bonuses]?" divided by basepay+overtime, otherwise 0. GSS mean=.024, s.d.=.066, n=1944, NBER mean=.068, s.d.=.124, n=40485

**Gainsharing** (GSS and NBER): "In your job are you eligible for any type of performance-based pay, such as individual or group bonuses, or any type of profit-sharing? What does the size of these performance-based payments depend on? Workgroup or department performance" (0=no, 1=yes), GSS mean=.257, n=2184, NBER mean=.207, n=41023

**Gainsharing as % of pay** (GSS and NBER): If "yes" to gainsharing, answer to "What was the approximate total dollar value of the payment(s) you received [in the most recent year of bonuses]?" divided by basepay+overtime, otherwise 0. GSS mean=.017, s.d.=.061, n=2013, NBER mean=.033, s.d.=.106, n=40767

**Individual bonus** (GSS and NBER): "In your job are you eligible for any type of performance-based pay, such as individual or group bonuses, or any type of profit-sharing? What does the size of these performance-based payments depend on? Individual performance" (0=no, 1=yes). GSS mean=.290, n=2184, NBER mean=.290, n=41019

**Individual bonus as % of pay** (NBER): If "yes" to individual bonus, answer to "What was the approximate total dollar value of the payment(s) you received [in the most recent year of bonuses]?" divided by basepay+overtime, otherwise 0. Mean=.050, s.d.=.125, n=40547

**Hold employer stock** (GSS): "Do you own any shares of stock in the company where you now work, either directly or through some type of retirement or stock plan?" (0=no, 1=yes), mean=.212, n=2202

**Employer stock as % of pay** (GSS): If "yes" to "hold employer stock," answer to "Please give a general estimate of how much cash you would get if all this stock were sold today?" divided by annual earnings, otherwise 0, mean=.111, s.d.=.977, n=2186

**Hold employer stock** (NBER): Any employer stock held through ESOP, Employee Stock Purchase Plan, 401(k), exercised stock options, or open market purchases (0=no, 1=yes), mean=.640, n=41206

**Employer stock as % of pay** (NBER): If "yes" to "Hold employer stock," the sum of answers to questions about value of stock held in different plans, divided by basepay+overtime, otherwise 0. NBER mean=.398, s.d.=.808, n=40367

**Hold stock options** (GSS and NBER): "Do you currently hold any stock options in your company (vested or unvested)?" (0=no, 1=yes), GSS mean=.123, n=2188, NBER mean=.219, n=41166.

**Stock options as % of pay** (NBER): If "yes" to "Hold stock options," the sum of answers to questions about value of vested and unvested stock, divided by basepay+overtime, otherwise 0. NBER mean=.395, s.d.=1.490, n=40922

## **EMPLOYEE PARTICIPATION IN DECISIONS**

**Make decisions with others** (GSS): "In your job, how often do you take part with others in making decisions that affect you?" (1-4 scale, 1=never, 4=often), mean=3.08, s.d.=.93, n=2211

**Help set way things done on job** (GSS): "How often do you participate with others in helping set the way things are done on your job?" (1-4 scale, 1=never, 4=often), mean=3.14, s.d.=.92, n=2210

**High participation in decisions** (GSS): This measure has a score of 1 if the sum of scales of the above two items is 7 or 8, and 0 otherwise. Mean=.466, n=2226.

**Lot of participation in job decisions** (NBER): "How much involvement and direct influence do YOU have in: Deciding HOW to do your job and organize the work" (coded 1 if "a lot", 0 otherwise) mean=0.51, n=40750

**Lot of participation in department goals** (NBER): "How much involvement and direct influence do YOU have in: Setting GOALS for your work group or department" (coded 1 if "a lot", 0 otherwise) mean=0.21, n=40594

**Lot of participation in company decisions** (NBER): "How much involvement and direct influence do YOU have in: Overall company decisions" (coded 1 if "a lot", 0 otherwise) mean=0.04, n=40520

**EI team** (NBER): "Some companies have organized workplace decision-making in ways to get more employee input and involvement. Are you personally involved in any team, committee or task force that addresses issues such as product quality, cost cutting, productivity, health and safety, or other workplace issues?" (0=no, 1=yes), mean=.35, n=40122

## OTHER VARIABLES

**Co-worker effort** (NBER): "At your workplace, how hard would you say that people work?" (0-10 scale, 0=not at all hard, 10=very hard), mean=7.07, s.d.=2.10, n=40738.

**Fixed pay at or above mkt.** (NBER): "Do you believe your fixed annual wages are higher or lower than those of employees with similar experience and job descriptions in other companies in your region?" (coded 0 if <3 on 1-5 scale, and 1 if 3 or greater) mean=.59, n=35860

**High performance policies** (NBER): Additive index of EI team, training, and job security measures. Mean=1.77, s.d.=.86, n=37125

**How closely supervised** (NBER): "Are you closely supervised, or do you work fairly independently of close supervision?" (0-10 scale, 0=independent of close supervision, 10= closely supervised), mean=3.35, s.d.=2.63, n=40845

**Job security** (NBER): "Thinking about the next twelve months, how likely do you think it is that you will lose your job or be laid off?" (coded 0 if somewhat or very likely, and 1 if not at all likely or not very likely), mean=.843, n=38510

**Task variety** (GSS): "I get to do a number of different things on my job." (1-4 scale, 1=strongly disagree, 4=strongly agree), mean=3.24, s.d.=.71, n=2210.

**Training** (NBER): "In the last 12 months have you received any formal training from your current employer, such as in classes or seminars sponsored by the employer?" (0=no, 1=yes), mean=.564, n=40460

**Mgt. is trustworthy** (GSS): "I trust the management at the place where I work." (1-4 scale, 1=strongly disagree, 4=strongly agree), mean=2.97, s.d.=0.85, n=2201

**Work as part of team** (GSS and NBER): "In your job, do you normally work as part of a team or group, or do you work mostly on your own?" (coded 1 if part of team, 0 otherwise), GSS mean=.58, n=2206, n=, NBER mean=.59, n=32301.

## **APPENDIX B: The shared capitalist thermometer index**

As a first step in assessing the relation of shared capitalism to employee outcomes, we constructed a thermometer-style index of shared capitalism. This index assigns one point each when the worker was covered by any of the shared capitalist forms of compensation about which the survey asked, with additional points for recent bonuses or grants, and for large bonuses or stock holdings. For questions with a continuous numeric answer, we gave the item a value of 1 if the respondent had a value greater than the median value. Because there is no natural ordering of shared capitalist systems in the sense that a firm first introduces profit-sharing, then adds employee ownership, and then gain-sharing, the index is not a Guttman scale. It is a simple summated rating (Bartholomew et al, 2002; Bartholomew, 1996), using dichotomous scoring.

In the GSS, there are eight variables in the index: profit sharing eligibility, gain sharing eligibility, owning any company stock, holding stock options, receiving a profit sharing bonus in the past year, receiving a gain sharing bonus in the past year, having an above-median profit- and gain sharing bonus as a percent of pay, and having an above-median company stock holding as a percent of pay. In the NBER data there are ten variables in the index: all of the above items plus one point each for receiving a stock option grant in the past year, and having above-median stock option holdings (including unvested options if they could be exercised today) as a percent of pay.

Indices of this style have both advantages and disadvantages. On the plus side, they provide a quick and ready measure of the extent of shared capitalist arrangements that makes it easy to compare results across surveys and to summarize the broad thrust of findings. Since our firm surveys covered only firms with some shared capitalist arrangements, the index allows us to differentiate workers with differing degrees of incentive to their firm's programs. On the

negative side, the index treats different programs the same even though they potentially have different effects on particular outcomes. It postulates a single scale with equal weights rather than using factor analysis or other statistical modelling to obtain weights for given factors. To deal with these problems, we estimated the relationship of the outcomes to the different types of shared capitalism, introduced as dummy or continuous variables in regressions.<sup>16</sup> Appendix B gives the results of those calculations. By comparing the results in the appendix tables with those in the text, we can assess the loss of information due to the amalgamation of the measures into a single index.

Figure B1 shows the distribution of our shared capitalism index in the GSS. This survey estimates that 40% of US workers have some form of shared capitalist program. This estimate is close to that obtained by Dube and Freeman in the WRPS. The mean score of the index is 1.48 – a figure greatly affected by the substantial number of workers without shared capitalism systems. Conditional on having a program, most workers report scores in the range of 2 to 5, with 6% reporting scores of 6 or greater. Figure B2 gives the distribution of the index in the NBER survey data. It also shows a non-normal distribution, with the most common scores as 2 to 4 but a sizeable number of workers scoring 7 or above. There is sufficient variation in the index to differentiate the extent of the shared capitalist “treatment” on workers.

---

<sup>16</sup> There are statistical techniques to deal with the formation of latent variable indices from questions of the sort that we are amalgamating into a single summated rating. See Bartholomew et al. (2002) and Spector (1992).



## References

- Appelbaum, Eileen, Thomas Bailey, Peter Berg, and Arne Kalleberg. 2000. Manufacturing Advantage: Why High-Performance Work Systems Pay Off. Ithaca, NY: Cornell University Press.
- Axelrod, Robert M. 1984. The Evolution of Cooperation. New York: Basic Books.
- Bailey, Richard M. 1970. "Economies of Scale in Medical Practice," in Empirical Studies in Health Economics. H. Klarman. Baltimore: Johns Hopkins Press.
- Bartholomew, David. 1996. The Statistical Approach to Social Measurement. San Diego: Academic Press.
- Bartholomew, David, J. Galbraith, Irini Moustkaki, Fionay Steele. 2002. The Analysis and Interpretation of Multivariate Data for Social Scientists. Chapman and Hall/CRC.
- Bebchuk, Lucian, and Jesse Fried. 2004. Pay Without Performance: The Unfulfilled Promise of Executive Compensation. Boston, MA: Harvard University Press.
- Becker, B.E., M. Huselid, and D. Ulrich. The HR Scorecard: Linking People, Strategy, and Performance. Boston, MA: Harvard Business School Press.
- Ben-Ner, Avner, and Derek C. Jones. 1995. "Employee Participation, Ownership, and Productivity: A Theoretical Framework," Industrial Relations. Vol. 34 (4). p 532-54.
- Blair, Margaret, Douglas Kruse, and Joseph Blasi. 2000. "Is Employee Ownership an Unstable Form? Or a Stabilizing Force?" in Thomas Kochan and Margaret Blair, eds., The New Relationship: Human Capital in the American Corporation. Washington, D.C.: The Brookings Institution.
- Blasi, Joseph R. and Douglas Kruse. 1991. The New Owners. New York: HarperCollins. 2004.
- 2006. "High Performance Work Practices at Century's End: Incidence, Diffusion, Industry Group Differences and the Economic Environment," Industrial Relations, Volume 45, Number 4 (October), pp. 547-578.
- Blasi, Joseph R., Michael Conte, and Douglas Kruse. 1996. "Employee Stock Ownership and Corporate Performance Among Public Companies," Industrial & Labor Relations Review, Volume 50, Issue 1, pp. 60-79.

- Boning, Brent, Casey Ichniowski, and Kathryn Shaw. 2001. "Opportunity Counts: Teams and the Effectiveness of Production Incentives," National Bureau of Economic Research Working Paper 8306.
- Blasi, Joseph, Douglas Kruse, and Aaron Bernstein. 2003. In the Company of Owners. New York: Basic Books.
- Blasi, Joseph, Douglas Kruse, and Richard Freeman. 2006. "Shared Capitalism at Work: Impacts and Policy Options," in America at Work, edited by Edward Lawler and James O'Toole. New York: Palgrave/Macmillan, 275-296.
- Carpenter, Jeffrey. 2004. "Punishing Free Riders: How Group Size Affects Mutual Monitoring and the Provision of Public Goods," IZA Discussion Paper No. 1337, Institute for the Study of Labor.
- Collins, Denis. 1998. Gainsharing and Power: Lessons from Six Scanlon Plans. Ithaca and London: Cornell University Press, ILR Press.
- Craig B. and J. Pencavel. 1992. "The Behavior of Worker Cooperatives: The Plywood Companies of The Pacific Northwest," American Economic Review, 82, 1083-1105.
- 1993. "The Objectives of Worker Cooperatives," Journal of Comparative Economics, Vol. 17(2), June, pp. 288-308.
- 1995. "Participation and Productivity: A Comparison of Worker Cooperatives and Conventional Firms in The Plywood Industry," Brookings Papers on Economic Activity, 212-160.
- Fehr, Ernst, and Simon Gächter. 2000. "Cooperation and Punishment in Public Goods Experiments," American Economic Review 90, pp. 980-994.
- Freeman, Richard, and Arin Dube. 2000. "Shared Compensation Systems and Decision Making in the U.S. Job Market," Draft, Harvard University Department of Economics.
- Freeman, R and Joel Rogers. 1999. What Workers Want. New York: Russell Sage and Cornell University Press.
- Fudenberg, Drew, and Eric Maskin. 1986. "The Folk Theorem in Repeated Games with Discounting or with Incomplete Information." Econometrica, Vol. 54, No. 3 (May), pp. 533-54.

- Gaynor, Martin and M. Pauly 1990. "Compensation and Productive Efficiency in Partnerships: Evidence from Medical Group Practice," Journal of Political Economy, 98, pps. 544-574.
- Hirshleifer, David, and Eric Rasmusen. 1989. "Cooperation in a Repeated Prisoners' Dilemma With Ostracism," Journal of Economic Behavior and Organization 12 (August): 87-106.
- Huselid, M. 1995. The impact of human resource management practices on the turnover, productivity, and corporate financial performance. Academy of Management Journal, 38: 635-672.
- Ichniowski, Casey, Kathryn Shaw, and Giovanni Prennushi. 1997. The Effects of Human resource Management Practices on Productivity: A Study of Steel Finishing Lines," American Economic Review, 87 (3), 291-313.
- Jensen, Michael C. ,and William H. Meckling. 1976. "Theory of the Firm: Managerial Behavior, Agency Costs and Ownership Structure," Journal of Financial Economics, Vol. 3, No. 4.
- Jones, Derek, and Takeo Kato. 1995. "The Productivity Effects of Employee-Stock Ownership Plans and Bonuses," American Economic Review, 83 (3), 391-415.
- Kandel, Eugene, and Edward P. Lazear. 1992. "Peer Pressure and Partnerships," Journal of Political Economy, Vol. 100, No. 4 (August), pp. 801-17.
- Knez, Marc, and Duncan Simester. 1997. "Firm-wide Incentives and Mutual Monitoring at Continental Airlines," mimeo, University of Chicago.
- , 2001. "Firm-Wide Incentives and Mutual Monitoring at Continental Airlines," Journal of Labor Economics, Vol. 19, No. 4. (Oct., 2001), pp. 743-772.
- Kruse, D. 1993. Profit Sharing: Does It Make A Difference? Kalamazoo, MI: W.E. Upjohn Institute for Employment Research.
- , 1998. "Profit Sharing and the Demand for Low-Skill Workers," in Richard Freeman and Peter Gottschalk, eds., Generating Jobs: Increasing the Demand for Low-Skill Workers. New York: Russell Sage Foundation, 1998, pp. 105-153.
- , and Joseph Blasi. 1997. "Employee Ownership, Employee Attitudes, and Firm Performance: A Review of the Evidence," in The Human Resources Management Handbook, Part 1. Edited by David Lewin, Daniel J.B. Mitchell, and Mahmood A. Zaidi. Greenwich, CT.: JAI Press.

- Leibowitz, Arlene and Robert Tollison. 1980. "Free Riding, Shirking, and Team Production in Legal Partnerships," Economic Inquiry, 18, pps. 380-394.
- Morgenson, Gretchen. 2002. "When Options Rise to Top, Guess Who Pays," The New York Times, Money & Business Section.
- Newhouse, Joseph. 1973. "The Economics of Group Practice," Journal of Human Resources, 8, pps. 37-56.
- New York Stock Exchange. 2004. "Section 303a Corporate Governance Rules (of the NYSE Listed Company Manual)," (Final Standards Approved by the SEC), November 3.  
Available at: [http://www.nyse.com/pdfs/section303A\\_final\\_rules.pdf](http://www.nyse.com/pdfs/section303A_final_rules.pdf)
- Prendergast, Canice. "The Provision of Incentives in Firms," Journal of Economic Literature, Vol. 37, No. 1. (Mar., 1999), pp. 7-63.
- Prietula, M.J., K.M. Carley, and L. Gasser. 1998. Simulating Organizations: Computational Models of Institutions and Groups. Cambridge: MIT Press.
- Smith, Adam. 2003. The Wealth of Nations. New York: Bantam Books.
- , 1776. An Inquiry Into The Nature and Causes of the Wealth of Nations. London: W. Strahan; and T. Cadell.
- Spector, Paul E. 1992. Summated Rating Scale Construction: An Introduction, Sage, London, Quantitative Applications in Social Sciences, 82
- Rapoport, Anatol, and A. M. Chammah. 1965. Prisoners' Dilemma. Ann Arbor: University of Michigan Press.
- Stiglitz, Joseph E. 1990. "Peer Monitoring and Credit Markets," World Bank Economic Review, 4(3): 351-366.
- Tesfatsion, Leigh. 2002 Agent-Based Computational Economics. Ames, Iowa: ISU Economics Working Paper Number 1.
- Weitzman, Martin, and Douglas Kruse. 1990. "Profit Sharing and Productivity." In A. S. Blinder, ed., Paying for Productivity: A Look at the Evidence. Washington, D.C.: Brookings Institution, pp. 95-141.

Figure 1a: GSS Distribution of Workers by How Well They Can See Whether Co-workers are Working Well or Poorly

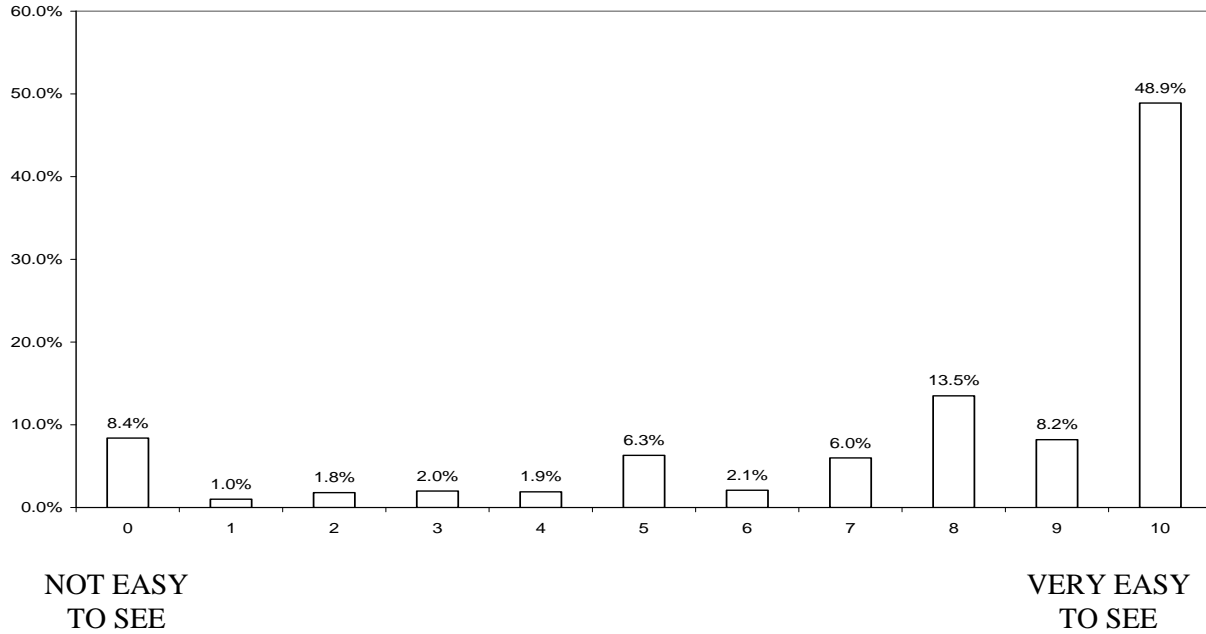


Figure 1b: NBER Distribution of Workers by How Well They Can See Whether Co-workers are Working Well or Poorly

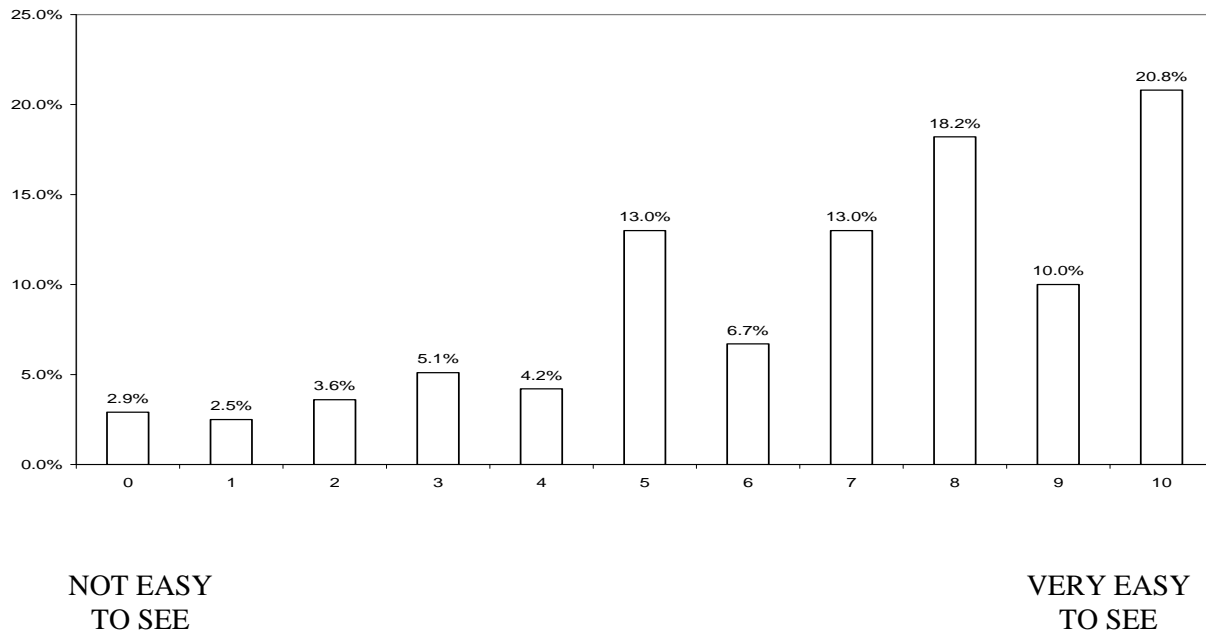


Figure 2a: GSS Distribution of Anti-shirking Index

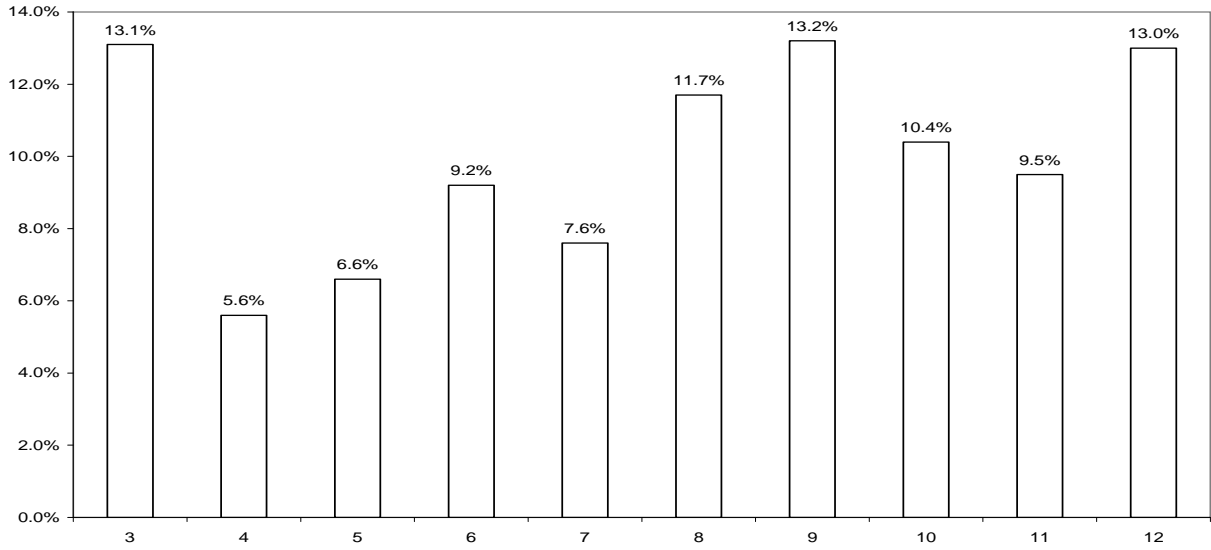


Figure 2b: NBER Frequency Distribution of Anti-shirking Index

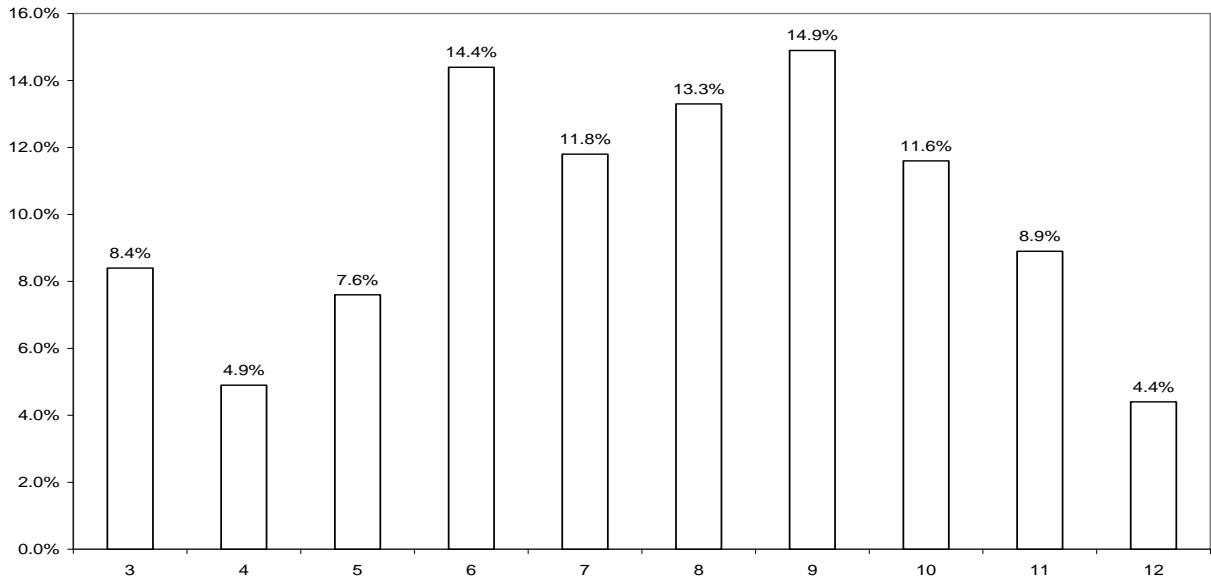


Figure 3: The Contingent Effects of Shared Capitalism on Anti-Shirking Activity

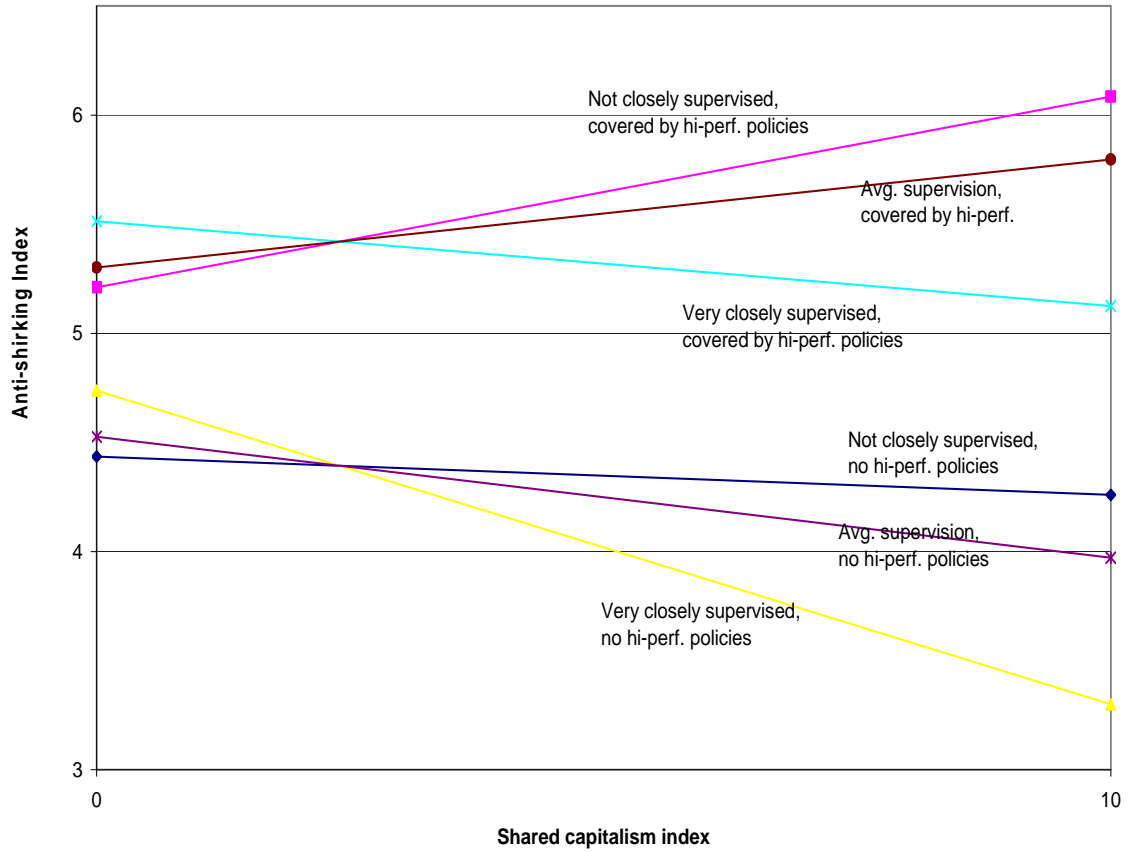
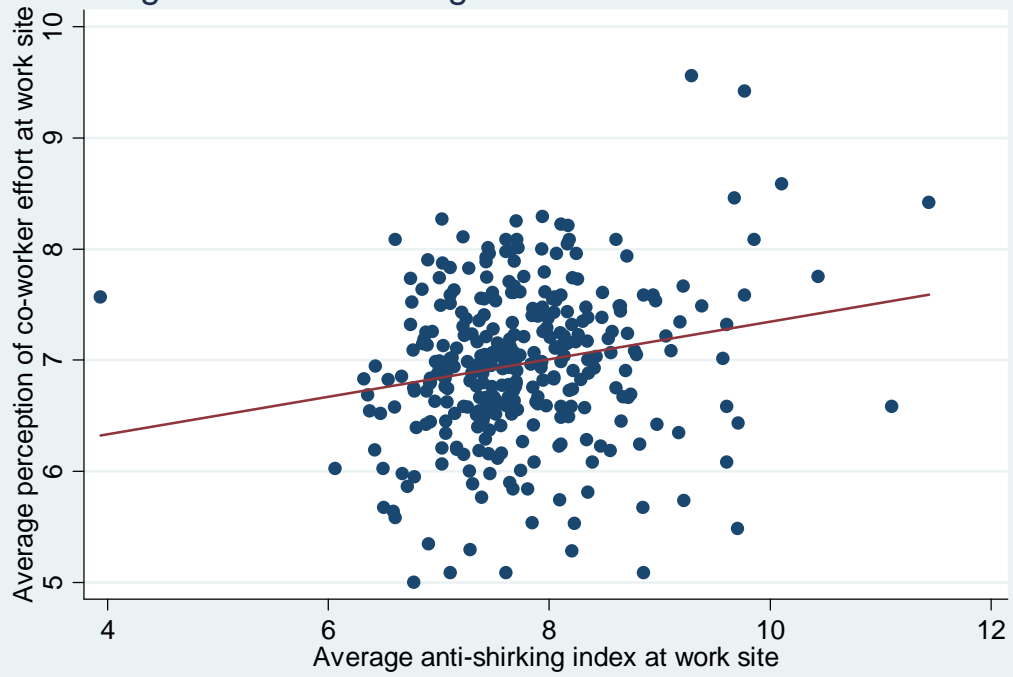
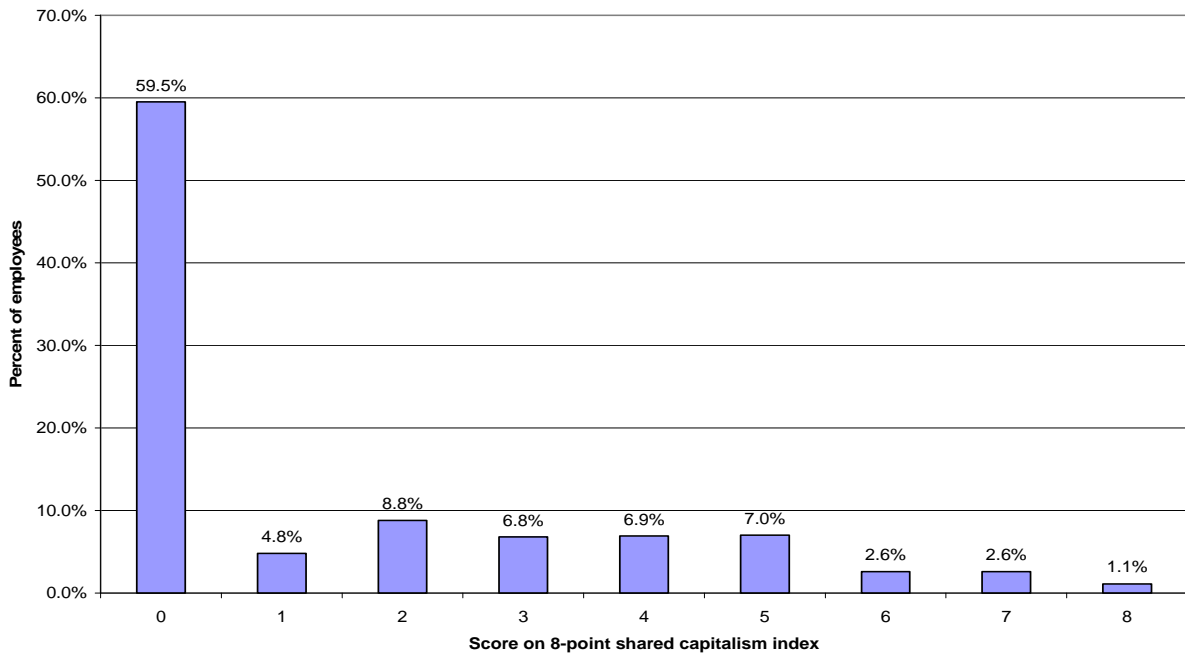


Figure 4: Anti-shirking and Worker Effort at Site Level

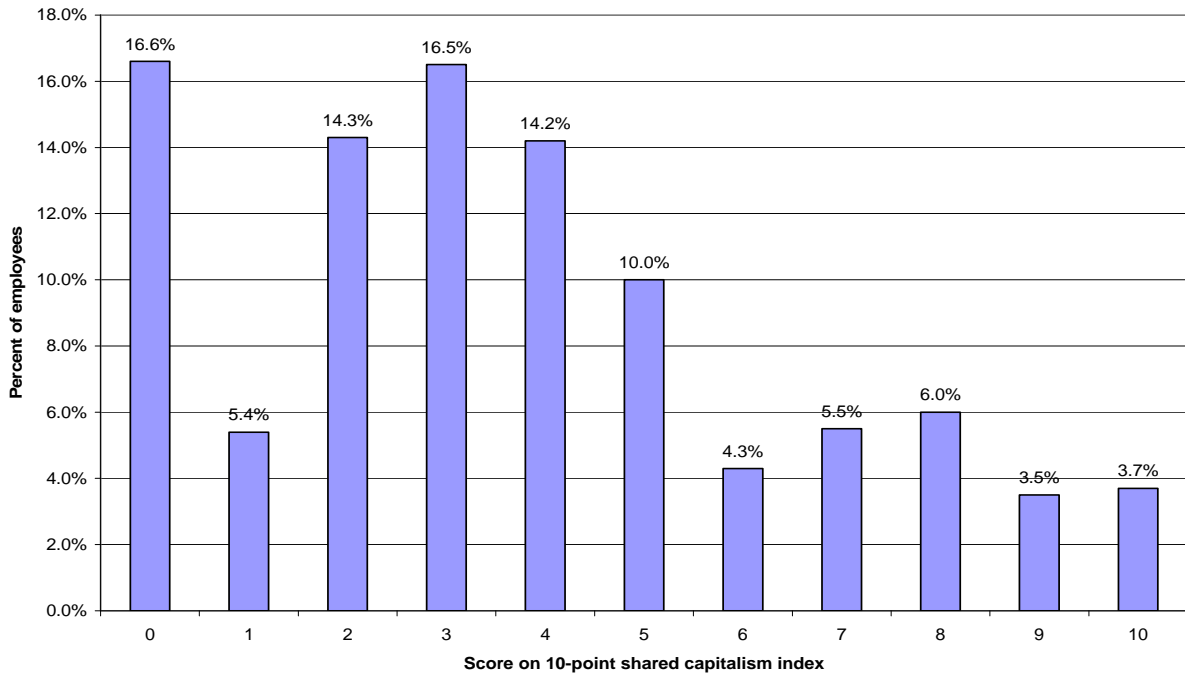




**Figure B1: Distribution of Shared Capitalism Index in GSS**



**Figure B2: Distribution of Shared Capitalism Index in NBER Companies**



**Table 1: Potential Employee Actions Against Shirkers**

		Talk to employee (1)	Talk to supervisor or manager (2)	Talk about it in work group or team (3)	Do Nothing (4)
<b>Response to fellow worker not working as hard or well as he or she should:</b>					
<b>GSS</b>					
	<b>Not at all likely</b>	<b>26.0%</b>	<b>28.0%</b>	<b>36.1%</b>	<b>38.8%</b>
	<b>Not very likely</b>	<b>17.2%</b>	<b>22.4%</b>	<b>20.3%</b>	<b>20.5%</b>
	<b>Somewhat likely</b>	<b>24.4%</b>	<b>25.1%</b>	<b>24.0%</b>	<b>17.6%</b>
	<b>Very likely</b>	<b>32.4%</b>	<b>24.4%</b>	<b>19.7%</b>	<b>23.0%</b>
	<b>n</b>	<b>2183</b>	<b>2137</b>	<b>1058</b>	<b>2173</b>
<b>NBER</b>					
	<b>Not at all likely</b>	<b>28.1%</b>	<b>21.5%</b>	<b>28.6%</b>	<b>36.7%</b>
	<b>Not very likely</b>	<b>25.4%</b>	<b>26.8%</b>	<b>26.5%</b>	<b>24.1%</b>
	<b>Somewhat likely</b>	<b>29.9%</b>	<b>34.8%</b>	<b>31.3%</b>	<b>22.4%</b>
	<b>Very likely</b>	<b>16.7%</b>	<b>17.0%</b>	<b>13.5%</b>	<b>16.8%</b>
	<b>n</b>	<b>38228</b>	<b>37767</b>	<b>29336</b>	<b>36979</b>

**Table 2: Past Employee Actions Against Shirkers**

<b>NBER Survey</b>				
	<b>Talk to employee (1)</b>	<b>Talk to supervisor or manager (2)</b>	<b>Talk about it in work group or team (3)</b>	<b>Do Nothing (4)</b>
<b>Actions actually taken when saw fellow worker not working as hard or well as he or she should^</b>	<b>33.5%</b>	<b>46.0%</b>	<b>20.3%</b>	<b>29.3%</b>
<b>If said likelihood of this action was:</b>				
<b>Not at all likely</b>	<b>6.1%</b>	<b>12.4%</b>	<b>3.9%</b>	<b>14.8%</b>
<b>Not very likely</b>	<b>13.9%</b>	<b>26.6%</b>	<b>9.1%</b>	<b>17.0%</b>
<b>Somewhat likely</b>	<b>54.6%</b>	<b>65.3%</b>	<b>34.0%</b>	<b>41.9%</b>
<b>Very likely</b>	<b>81.7%</b>	<b>84.9%</b>	<b>52.8%</b>	<b>72.4%</b>
<b>n</b>	<b>18744</b>	<b>18744</b>	<b>18744</b>	<b>18744</b>

Workers were asked "Have you ever seen one of your fellow employees not working as hard or well as he or she should over an extended time period?" The above answers are based on the 58.6% who responded "yes". They were then asked "What action, if any, did you take?" In addition to the actions listed above, 5.2% said they would do "something else".

**Table 3: Effects of Shared Capitalism on Anti-shirking Index**

	GSS data			GSS data			NBER data		
<b>Shared capitalism index</b>	<b>0.115</b>	<b>(.035)</b>	<b>***</b>	<b>0.072</b>	<b>(0.034)</b>	<b>**</b>	<b>0.027</b>	<b>(0.009)</b>	<b>***</b>
<b>Ease of seeing how well co-worker is working</b>	<b>0.086</b>	<b>(.024)</b>	<b>***</b>	<b>0.061</b>	<b>(0.024)</b>	<b>**</b>	<b>0.130</b>	<b>(0.005)</b>	<b>***</b>
<b>Work as part of team</b>	<b>1.060</b>	<b>(.059)</b>	<b>***</b>	<b>0.766</b>	<b>(0.157)</b>	<b>***</b>			
<b>High participation in decisions</b>				<b>1.207</b>	<b>(0.153)</b>	<b>***</b>			
<b>Task variety</b>				<b>0.308</b>	<b>(0.103)</b>	<b>***</b>			
<b>Any individual bonuses</b>							<b>0.199</b>	<b>(0.036)</b>	<b>***</b>
<b>Employee involvement team</b>							<b>0.571</b>	<b>(0.028)</b>	<b>***</b>
<b>Formal training</b>							<b>0.235</b>	<b>(0.028)</b>	<b>***</b>
<b>Job security</b>							<b>0.445</b>	<b>(0.037)</b>	<b>***</b>
<b>How closely supervised</b>							<b>-0.013</b>	<b>(0.006)</b>	<b>**</b>
<b>Size 1-9 ees.</b>	<b>1.255</b>	<b>(.278)</b>	<b>***</b>	<b>1.015</b>	<b>(0.271)</b>	<b>***</b>			
<b>10-49 ees.</b>	<b>1.211</b>	<b>(.259)</b>	<b>***</b>	<b>1.073</b>	<b>(0.250)</b>	<b>***</b>			
<b>59-99 ees.</b>	<b>0.933</b>	<b>(.280)</b>	<b>***</b>	<b>0.858</b>	<b>(0.269)</b>	<b>**</b>			
<b>100-999 ees.</b>	<b>0.427</b>	<b>(.244)</b>	<b>*</b>	<b>0.412</b>	<b>(0.235)</b>				
<b>1000+ ees. (excl.)</b>									
<b>n</b>	<b>1634</b>			<b>1633</b>			<b>32099</b>		
<b>R-sq.</b>	<b>0.131</b>			<b>0.176</b>			<b>0.192</b>		

The GSS regressions include controls for occupation (7 dummies), age, years of tenure, female, black, Hispanic, education (4 dummies), full-time status, ln(yearly earnings), and dummy for survey year 2006. The NBER regressions include controls for occupation (5 dummies), mgt. level (3 dummies), hourly pay status, supervisory status, years of tenure, hours worked per week, union status, country (27 dummies), age, gender, marital status (2 dummies), family size, college graduate, graduate degree, number of kids, race (4 dummies), disability status, ln(fixed pay), and company fixed effects.

**Table 4a: Specific Responses to Shirking, GSS**

Based on ordered probits

	Likelihood of talking to shirker (1)			Likelihood of talking to sup./manager (2)			Likelihood of talking in work group (3)		
Shared capitalism index	0.038	(0.015)	***	0.038	(0.014)	***	-0.011	(0.022)	
Ease of seeing how well co-worker is working	0.033	(0.010)	***	0.022	(0.010)	**	0.029	(0.016)	*
Work as part of team	0.426	(0.063)	***	0.298	(0.062)	***	0.138	(0.099)	
Size 1-9 ees.	0.469	(0.112)	***	0.448	(0.111)	***	-0.393	(0.165)	**
10-49 ees.	0.432	(0.104)	***	0.417	(0.104)	***	-0.166	(0.150)	
59-99 ees.	0.293	(0.111)	***	0.390	(0.110)	***	-0.304	(0.163)	
100-999 ees.	0.086	(0.101)		0.208	(0.100)	**	0.007	(0.143)	
1000+ ees. (excl.)									
n	1676			1641			800		
(Pseudo) R-sq.	0.058			0.034			0.019		
Cut point 1	0.886	(0.379)		-0.020	0.370		-1.365	0.562	
Cut point 2	1.407	(0.380)		0.598	0.371		-0.818	0.561	
Cut point 3	2.077	(0.382)		1.325	0.371		-0.094	0.560	

The regressions include controls for occupation (7 dummies), age, years of tenure, female, black, Hispanic, education (4 dummies), full-time status, ln(yearly earnings), and dummy for survey year 2006.

**Table 4b: Specific Responses to Shirking, NBER**

Based on ordered probits

	Likelihood of talking to shirker (1)			Likelihood of talking to sup./manager (2)			Likelihood of talking in work group (3)		
<b>Shared capitalism index</b>	<b>0.010</b>	<b>(0.004)</b>	<b>**</b>	<b>0.007</b>	<b>(0.004)</b>	<b>*</b>	<b>0.009</b>	<b>(0.005)</b>	<b>*</b>
<b>Any individual bonuses</b>	<b>0.061</b>	<b>(0.017)</b>	<b>***</b>	<b>0.084</b>	<b>(0.017)</b>	<b>***</b>	<b>0.050</b>	<b>(0.020)</b>	<b>**</b>
<b>Ease of seeing how well co-worker is working</b>	<b>0.045</b>	<b>(0.002)</b>	<b>***</b>	<b>0.057</b>	<b>(0.002)</b>	<b>***</b>	<b>0.037</b>	<b>(0.003)</b>	<b>***</b>
<b>Employee involvement team</b>	<b>0.224</b>	<b>(0.013)</b>	<b>***</b>	<b>0.192</b>	<b>(0.013)</b>	<b>***</b>	<b>0.195</b>	<b>(0.015)</b>	<b>***</b>
<b>Formal training</b>	<b>0.146</b>	<b>(0.013)</b>	<b>***</b>	<b>0.055</b>	<b>(0.013)</b>	<b>***</b>	<b>0.065</b>	<b>(0.014)</b>	<b>***</b>
<b>Job security</b>	<b>0.132</b>	<b>(0.018)</b>	<b>***</b>	<b>0.206</b>	<b>(0.018)</b>	<b>***</b>	<b>0.084</b>	<b>(0.019)</b>	<b>***</b>
<b>How closely supervised</b>	<b>0.002</b>	<b>(0.003)</b>		<b>-0.002</b>	<b>(0.003)</b>		<b>0.007</b>	<b>(0.003)</b>	<b>**</b>
<b>n</b>	<b>33807</b>			<b>33544</b>			<b>25570</b>		
<b>(Pseudo) R-sq.</b>	<b>0.071</b>			<b>0.049</b>			<b>0.022</b>		
							<b>-</b>		
<b>Cut point 1</b>	<b>0.152</b>	<b>(0.254)</b>		<b>0.198</b>	<b>(0.252)</b>		<b>0.020</b>	<b>(0.664)</b>	
<b>Cut point 2</b>	<b>0.907</b>	<b>(0.254)</b>		<b>1.012</b>	<b>(0.252)</b>		<b>0.700</b>	<b>(0.664)</b>	
<b>Cut point 3</b>	<b>1.920</b>	<b>(0.255)</b>		<b>2.104</b>	<b>(0.252)</b>		<b>1.715</b>	<b>(0.664)</b>	

The regressions include controls for occupation (5 dummies), mgt. level (3 dummies), hourly pay status, supervisory status, years of tenure, hours worked per week, union status, country (27 dummies), age, gender, marital status (2 dummies), family size, college graduate, graduate degree, number of kids, race (4 dummies), disability status, ln(fixed pay), and company fixed effects.

**Table 5: Effects of Particular Forms of Shared Capitalist Compensation on Anti-shirking Index**

	GSS (1)	NBER (2)	NBER (3)
<b>PROFIT &amp; GAIN SHARING</b>			
Profit sharing or gain sharing eligibility	0.344 (0.183) *	0.010 (0.040)	
Profit sharing-gain sharing bonus as % of base pay	0.742 (0.887)	1.424 (0.143) ***	
Profit sharing eligibility			-0.181 (0.045) ***
Profit sharing bonus as % of base pay			0.596 (0.202) ***
Gain sharing eligibility			0.099 (0.056) *
Gain sharing bonus as % of base pay			0.675 (0.223) ***
Individual bonus eligibility			0.250 (0.053) ***
Individual bonus as % of base pay			-0.480 (0.230) **
<b>STOCK OPTIONS</b>			
Stock option holding	0.237 (0.293)	0.440 (0.075) ***	-0.043 (0.110)
Stock option value as % of base pay			0.001 (0.011)
Stock option grant last year			0.212 (0.108) **
Stock option grant as % of avg. grant			0.014 (0.023)
<b>EMPLOYEE OWNERSHIP</b>			
Co. stock ownership	0.020 (0.298)	0.182 (0.038) ***	0.051 (0.042)
Co. stock as % of base pay	0.141 (0.101)	0.027 (0.018)	-0.023 (0.019)
R-squared	.132	.113	.195
N	1645	34379	30933

**Based on OLS regressions**

The GSS regression includes controls for occupation (7 dummies), age, years of tenure, female, black, Hispanic, education (4 dummies), full-time status, ln(yearly earnings), co. size (4 dummies), ease of observing co-workers, and dummy for survey year 2006.

The NBER regression in column 2 contains the GSS controls from column 1 except co. size, plus company and country fixed effects.

The NBER regression in column 3 includes the controls from column 2 plus hourly pay status, supervisory status, hours worked per week, union status, marital status (2 dummies), family size, number of kids, race (4 dummies), disability status, ln(fixed pay), closeness of supervision, employee involvement team, training in past year, high job security, and company fixed effects.

**Table 6: Longitudinal Evidence: Two waves of same company**

	2004 (profit sharing announced) (1)	2005 (profit sharing in place) (2)	Change	
<b>Profit sharing</b>	58.6%	87.9%	29.2%	***
<b>VERY/SOMEWHAT LIKELY TO TAKE ACTION AGAINST SHIRKER</b>				
Talk to shirking employee	42.1%	54.5%	12.4%	***
Talk to supervisor or manager	64.3%	68.1%	3.9%	
Talk about it in workgroup	47.3%	48.8%	1.5%	
Do nothing	34.1%	33.7%	-0.4%	
<b>WHY YOU ARE LIKELY TO TAKE ACTION</b>				
I like helping others	47.4%	49.6%	2.3%	
Employee might help me in the future	30.6%	33.5%	2.9%	
Poor performance will cost me and other employees in bonus or stock value	38.8%	56.1%	17.3%	***
Other employees appreciate it when someone steps forward	34.3%	34.4%	0.1%	
Want to keep work standards high	59.3%	59.6%	0.3%	
Employee's poor performance could affect my own job	57.1%	56.3%	-0.8%	
Other (What?)	14.2%	10.0%	-4.2%	
<b>N</b>	273	428		



**Table 7a: Company Size and Employee-Management Relations as Moderators of Shared Capitalism**

Dep. variable=anti-shirking index

	GSS data				NBER data	
	(1)		(2)		(3)	
Shared cap. index * co. size of:						
1-9 ees.	0.281	(0.085) ***				
10-49 ees.	0.117	(0.068) *				
59-99 ees.	0.195	(0.085) **				
100-999 ees.	0.029	(0.057)				
2000+ ees.	0.045	(0.076)				
Shared cap. index * mgt. is trustworthy						
Strongly disagree (D or F in col. 3)			0.043	(0.165)	0.048	(0.014) ***
Disagree (C in col. 3)			0.117	(0.072)	-0.001	(0.013)
Agree (B in col. 3)			0.083	(0.048) *	0.014	(0.010)
Strongly agree (A in col. 3)			0.179	(0.064) ***	0.054	(0.013) ***
Mgt. is trustworthy:						
Strongly disagree (excl.)						
Disagree	0.057	(0.181)	-0.053	(0.414)	0.499	(0.064) ***
Agree	-0.249	(0.210)	0.122	(0.374)	0.710	(0.065) ***
Strongly agree	-0.199	(0.313)	0.208	(0.398)	0.838	(0.081) ***
Size 1-9 ees.	0.855	(0.345) **	1.179	(0.283) ***		
10-49 ees.	1.005	(0.336) ***	1.143	(0.259) ***		
59-99 ees.	0.585	(0.366)	0.885	(0.281) ***		
100-999 ees.	0.403	(0.317)	0.407	(0.244) *		
1000+ ees. (excl.)						
n	1631		1627		31770	
(Pseudo) R-sq.	0.137		0.132		0.205	

\* p<.10 \*\* p<.05 \*\*\* p<.01 (s.e. in parentheses)

The GSS regression includes controls for occupation (7 dummies), age, years of tenure, female, black, Hispanic, education (4 dummies), full-time status, ln(yearly earnings), ease of observing co-workers, work as part of team, and dummy for survey year 2006.

The NBER regressions include controls for occupation (5 dummies), mgt. level (3 dummies), hourly pay status, supervisory status, years of tenure, hours worked per week, union status, country (27 dummies), age, gender, marital status (2 dummies), family size, college graduate, graduate degree, number of kids, race (4 dummies), disability status, ln(fixed pay), employee involvement team, training in past year, job security, ease of observing co-workers, closeness of supervision, individual bonuses, and company fixed effects.

**Table 7b: Company Policies as Moderators of Shared Capitalism**

Dep. variable=anti-shirking index

	(1)			(2)		
Shared capitalism index	0.028	(0.010)	***	-0.018	(0.018)	
Employee involvement team	0.544	(0.030)	***			
Formal training	0.232	(0.029)	***			
Job security	0.431	(0.040)	***			
High perf. policy index				0.259	(0.030)	***
* shared capitalism index				0.035	(0.006)	***
How closely supervised	-0.014	(0.006)	**	0.030	(0.010)	***
* shared capitalism index				-0.013	(0.002)	***
Fixed pay at or above market	0.181	(0.028)	***	0.043	(0.050)	
* shared capitalism index				0.034	(0.010)	***
n	28424			28424		
(Pseudo) R-sq.	0.193			0.194		

\* p<.10 \*\* p<.05 \*\*\* p<.01 (s.e. in parentheses)

Based on NBER data. The regressions include controls for occupation (5 dummies), mgt. level (3 dummies), hourly pay status, supervisory status, years of tenure, hours worked per week, union status, country (27 dummies), age, gender, marital status (2 dummies), family size, college graduate, graduate degree, number of kids, race (4 dummies), disability status, ln(fixed pay), ease of observing co-workers, individual bonuses, and company fixed effects.

**Table 8: Why People Do/Do not Act against Shirkers**

	All (1)	Position in shared capitalism <sup>^</sup>			Coeff. on SC index <sup>^^</sup> (5)
		Lower (2)	Middle (3)	Upper (4)	
<b>WHY YOU MIGHT DO SOMETHING</b>					
I like helping others	44.9%	47.2%	43.2%	42.8%	0.001
Employee might help me in the future	31.0%	32.0%	30.5%	29.7%	0.003
Poor performance will cost me and other employees in bonus or stock value	42.9%	32.0%	48.5%	58.2%	0.038***
Other employees appreciate it when someone steps forward	23.9%	19.9%	24.9%	32.0%	0.008***
Want to keep work standards high	46.6%	41.6%	46.6%	58.9%	0.015***
Employee's poor performance could affect my own job	55.9%	53.2%	56.9%	61.3%	0.010***
Other (What?)	6.8%	5.7%	7.0%	8.9%	0.003***
n	32386	13991	12514	5463	
<b>WHY YOU MIGHT DO NOTHING</b>					
Employee not working well would resent it	41.3%	37.9%	43.2%	44.7%	0.015***
Other employees would react poorly	23.4%	24.3%	23.3%	21.8%	0.000
It's the supervisor's job, not mine	44.7%	45.0%	46.8%	39.7%	0.001
Some other employee will probably take action	8.4%	10.5%	7.2%	6.1%	0.000
There's no financial benefit for me	7.7%	10.2%	6.6%	4.9%	-0.003***
Nothing in it for me personally	11.0%	13.3%	10.1%	8.0%	-0.003**
Other (What?)	12.4%	8.8%	13.3%	19.0%	0.007***
<b>N</b>	<b>30363</b>	<b>12236</b>	<b>12284</b>	<b>5444</b>	

Based on NBER data

<sup>^</sup> Shared capitalism index of 5 or greater="upper", 3 to 4="middle", and 0 to 2="lower"

<sup>^^</sup> Based on linear probability models predicting whether employee checked this reason, controlling for ease of observing co-worker, closeness of supervision, occupation (5 dummies), mgt. level (3 dummies), hourly pay status, supervisory status, tenure in years, hours worked per week, union status, age, gender, marital status (2 dummies), family size, college graduate, graduate degree, number of kids, race (4 dummies), disability status, ln(fixed pay), and company fixed effects.

**Table 9: Responses to Anti-Shirking Actions**

	<u>Yes</u>	<u>No</u>	<u>Don't know</u>	<u>n</u>
<b>What was the outcome of your actions?</b>				
<b>Employee not working well resented it</b>	<b>34.7%</b>	<b>19.1%</b>	<b>46.2%</b>	<b>14125</b>
<b>Other employees appreciated it</b>	<b>45.0%</b>	<b>11.4%</b>	<b>43.6%</b>	<b>13676</b>
<b>Supervisor appreciated it</b>	<b>40.1%</b>	<b>15.5%</b>	<b>44.4%</b>	<b>13845</b>
<b>Employee not working well improved</b>	<b>35.7%</b>	<b>38.9%</b>	<b>25.4%</b>	<b>14254</b>
<b>Other</b>	<b>28.3%</b>	<b>9.9%</b>	<b>61.8%</b>	<b>2923</b>

Based on NBER data.

Workers were asked "Have you ever seen one of your fellow employees not working as hard or well as he or she should over an extended time period?" If yes, they were then asked "What action, if any, did you take?" Those who reported taking some action (see Table 2) were then asked the above question about the outcome.

**Table 10: Relation of Anti-shirking Behavior to Co-worker Performance**

A. Average ratings of co-worker effort (0-10 scale)				
Anti-shirking action				
	Talk to shirker	Talk to sup./man.	Do nothing	
Not at all likely	6.7	6.8	7.2	
Not very likely	7.0	7.1	7.1	
Somewhat likely	7.3	7.2	7.0	
Very likely	7.5	7.1	6.6	

B. Anti-shirking index as predictor of workplace performance				
Dep. var.	Summated rating coeff.	(s.e.)	T or Z	n
Rating of co-worker effort (0-10 scale, OLS)	0.109	(0.004)	25.24	35637
Workers encourage each other (-1, 0, 1, ordered probit)	0.135	(0.005)	27.14	12659
Grade of facility performance (0-4 scale, OLS):				
A. Getting the job done that has to get done efficiently	0.050	(0.002)	21.12	22810
B. Practicing accountability	0.066	(0.003)	23.32	22705
C. Delivering customers' products on time.	0.021	(0.003)	7.68	22700
D. Delivering highest quality customer products.	0.044	(0.003)	17.69	22704
E. Being the market leader in its products.	0.032	(0.003)	13.18	22569

Based on NBER data

**Table A-1 – Current Prevalence of Shared Capitalism Plans**

	Source:	GSS	GSS	NOS
	Year:	2002	2006	2002
	Type of data:	Employee survey (1)	Employee survey (2)	Firm survey (3)
<b>PROFIT SHARING</b>				
<b>Percent of employees covered</b>				
Eligible for bonuses based on company performance		34%	38%	46%
Received bonus last year based on company performance		24%	30%	
<b>Percent of firms with plans</b>				
Any employees eligible for bonuses based on company performance				62%
<b>GAINSHARING</b>				
<b>Percent of employees covered</b>				
Eligible for bonuses based on department or team performance		23%	27%	23%
Received bonus last year based on department or team performance		17%	21%	
<b>Percent of firms with plans</b>				
Any employees eligible for bonuses based on department or team performance				35%
<b>EMPLOYEE OWNERSHIP</b>				
<b>Percent of employees covered</b>				
Own company stock		21%	18%	16%
<b>Percent of firms</b>				
Any employees own company stock				33%
<b>STOCK OPTIONS</b>				
<b>Percent of employees covered</b>				
Hold stock options			9%	
Granted stock options last year			5%	
<b>Percent of firms</b>				
Any employees granted stock options last year				14%
<b>COMBINATIONS</b>				
Any of above		43%	47%	
Just one form:				
Rec'd profit- or gainsharing bonus last year		14.6%	21.2%	
Hold company stock		5.0%	3.8%	
Hold stock options		0.7%	0.7%	
Two forms:				
Hold co. stock and rec'd profit- or gainsharing bonus last year		3.7%	5.3%	
Hold co. stock and stock options		6.1%	3.2%	
Hold stock options and rec'd profit- or gainsharing bonus last year		0.4%	0.6%	
All three forms		6.1%	4.6%	
Sample size		1257	1173	312

**TABLE A-2: Shared capitalism types and intensities in GSS and NBER datasets**

	General Social Survey 2002-2006	NBER company dataset	Sample sizes	
			GSS	NBER
Bonus eligibility				
Profit sharing	35.9%	71.3%	2386	41018
Gainsharing	24.9%	20.7%	2386	41023
Size of most recent bonus, if eligible for any				
Mean dollar value	\$6,265	\$11,329	693	26113
Median dollar value	\$1,500	\$2,000	693	26113
Mean % of pay	8.9%	12.1%	645	22019
Median % of pay	4.6%	5.7%	645	22019
Employee ownership				
Own employer stock in any form	19.4%	64.0%	2406	41206
Own employer stock through:				
Employee Stock Ownership Plan		8.1%		41109
Employee Stock Purchase Plan		17.6%		40990
401(k) plan		33.5%		40885
Exercising options and keeping stock		5.0%		41032
Open market purchase		7.3%		41145
Value of employer stock, if own stock				
Dollar value: Mean	\$63,130	\$60,078	318	25447
Median	\$10,000	\$14,375	318	25447
% of pay: Mean	81.7%	65.0%	302	22715
Median	23.0%	30.6%	302	22715
% of wealth: Mean		19.6%		23141
Median		10.0%		23141
Stock options				
Currently hold stock options	11.3%	21.9%	2392	41166
Ever granted stock options		22.3%		41166
Granted stock options last year		20.4%		41158
Value of stock options, if hold options:				
Mean dollar value of unvested options		\$112,882		8390
Mean dollar value of vested options		\$143,117		8497
Total dollar value: Mean		\$249,901		8656
Median		\$75,000		8656
% of pay: Mean		183.7%		8403
Median		100.0%		8403
% of wealth: Mean		60.3%		8104
Median		28.6%		8104
Any of above programs	44.9%	85.7%	2430	41206