

NBER WORKING PAPER SERIES

SCHOOL MARKETS: THE IMPACT OF INFORMATION APPROXIMATING SCHOOLS'
EFFECTIVENESS

Alejandra Mizala
Miguel Urquiola

Working Paper 13676
<http://www.nber.org/papers/w13676>

NATIONAL BUREAU OF ECONOMIC RESEARCH
1050 Massachusetts Avenue
Cambridge, MA 02138
November 2007

For useful comments we are grateful to Ken Chay, David Lee, Henry Levin, Bentley MacLeod, Ofer Malamud, and Jonah Rockoff. For generous funding we thank the Institute of Latin American Studies at Columbia University. The views expressed herein are those of the author(s) and do not necessarily reflect the views of the National Bureau of Economic Research.

© 2007 by Alejandra Mizala and Miguel Urquiola. All rights reserved. Short sections of text, not to exceed two paragraphs, may be quoted without explicit permission provided that full credit, including © notice, is given to the source.

School Markets: The Impact of Information Approximating Schools' Effectiveness
Alejandra Mizala and Miguel Urquiola
NBER Working Paper No. 13676
November 2007
JEL No. I2

ABSTRACT

The impact of competition on academic outcomes is likely to depend on whether parents are informed about schools' effectiveness or valued added (which may or may not be correlated with absolute measures of their quality), and on whether this information influences their school choices, thereby affecting schools' market outcomes. To explore these issues, this paper considers Chile's SNED program, which seeks to identify effective schools, selecting them from within "homogeneous groups" of arguably comparable institutions. Its results are widely disseminated, and the information it generates is quite different from that conveyed by a simple test-based ranking of schools (which in Chile, turns out to largely resemble a ranking based on socioeconomic status). We rely on a sharp regression discontinuity to estimate the effect that being identified as a SNED winner has on schools' enrollment, tuition levels, and socioeconomic composition. Through five applications of the program, we find no consistent evidence that winning a SNED award affects these outcomes. This suggests that information on school effectiveness -- at least as it is calculated and delivered by the SNED -- might not much affect school markets.

Alejandra Mizala
Center for Applied Economics
Department of Industrial Engineering
University of Chile
Avenida Republica 701
Santiago, Chile
amizala@dii.uchile.cl

Miguel Urquiola
Columbia University
SIPA and Economics Department
1022 IAB, MC 3308
420 West 118th Street
New York, NY 10027
and NBER
msu2101@columbia.edu

I. Introduction

The school choice debate has long recognized that the impact of competition on academic outcomes may depend on the extent to which parents are informed about and value school quality. Hanushek (1981) states, for instance, that “if the efficiency of our school systems is due to poor incentives for teachers and administrators coupled with poor decision-making by consumers, it would be unwise to expect much from programs that seek to strengthen ‘market forces’ in the selection of schools.” Moe (1995) notes that school choice critics have therefore argued that “parents—especially low income parents—supposedly care about practical concerns, such as how close the school is or whether it has a good sports team, and put little emphasis on academic quality and other properties of *effective* schooling.” (emphasis added)¹

Since these statements were made, the economics literature has produced fairly clear evidence that parents do care about school quality as measured by test scores. Black (1999) and Figlio and Lucas (2004), for instance, present quasi-experimental evidence suggesting that consumers are willing to pay more for houses tied to schools with higher mean scores.² More recently, Hastings, Van Weelden, and Weinstein (2007) present results from a randomization suggesting that even lower income parents’ school choices respond to test score data. This is also consistent with logit and structural estimates of parental preferences and demand responses.³

A drawback of this evidence, however, is that test scores conflate peer quality and school effectiveness or value added—indeed, perhaps the clearest finding in the economics of education is that socioeconomic status and academic achievement are strongly correlated. This matters because if parents react to testing data simply because it informs them as to which schools contain “better” children, then it is not clear that giving them greater choice would be the best way to provide schools with incentives to become more effective. Schools might respond, for instance, by seeking better ways to attract

¹ An extensive literature indeed raises the possibility that parents are either uninformed about school quality, or else select schools using other criteria; there is less consistent evidence that such behavior is more prevalent among lower income households. See for instance Henig (1994), Ascher et al. (1996), Armour and Peiser (1998), Kleitz et al. (2000), Lubienski (2003), and Elacqua and Fabrega (2004).

² See also Bogart and Cromwell (1997), Brunner et al. (2001), and Downes and Zabel (2002).

³ See for instance Hastings, Kane, and Staiger (2006), Bayer, Ferreira and McMillan (2007), and Gallego and Hernando (2007). These studies suggest that parents also value school traits like proximity.

wealthy parents, rather than by exploring better teaching techniques. This possibility is relevant because other research suggests that parents care about peer quality in itself, and that school choice can facilitate stratification.⁴

Thus a gap in the literature relates to whether parental choices, and thereby schools' market outcomes, would respond to signals of school effectiveness per se, even if these were not necessarily correlated with peer quality. This paper attempts to address this gap. To do so, we consider how Chilean schools' (enrollment) market shares, their tuition, and their student composition react when they are identified as performing well *relative to schools that serve similar children*. Specifically, we analyze the SNED,⁵ a program which relies mainly on schools' test score levels and inter-cohort gains to select good performers from within more than one hundred "homogeneous groups" constructed such that they contain institutions used by arguably comparable children.

While isolating school effectiveness is ultimately very difficult, the SNED thus aims to approximate it in a simple manner which shares elements with approaches used elsewhere, including New Jersey, New York City, and North Carolina. Its results are disseminated via newspaper publications, the internet, PTA meetings, and in some municipalities, by placing banners close to school entry-ways.⁶

This setting is interesting for several reasons. First, the information the SNED generates is indeed quite different from that conveyed by a simple test-based ranking of schools. This is important because as Mizala et al. (2007) point out, in Chile such a ranking turns out to be close to one based on schools' average socioeconomic status.

Second, within each homogeneous group, the SNED selects "winners" after ranking schools based on an index. The top-ranked schools are chosen such that winners account for about 25 percent of enrollments, resulting in clear group-specific cutoff scores. Parents are informed of schools' status (winner or non-winner), but not of their index values. These facts allow us to use a regression discontinuity design to evaluate the

⁴ See for instance Henig (1990), Epple and Romano (1998), Schneider and Buckley (2002), Bayer and McMillan (2005), Urquiola (2005), Hsieh and Urquiola (2006), Rothstein (2006), Card, Mas, and Rothstein (2007), and Gallego and Hernando (2007).

⁵ *Sistema Nacional de Evaluación del Desempeño de los Establecimientos Educativos Subvencionados*.

⁶ New Jersey uses school report cards allowing parents to match schools to *district factor groups* made up of institutions in districts of similar socioeconomic status. New York City places schools in "peer horizons" containing about 40 similar institutions. North Carolina's ABCs accountability model also uses test scores changes and relies on the placement of banners to identify award-winning schools.

effects of selection among arguably similar schools. Further, the SNED has distributed awards six times since 1996, providing reasonable sample sizes.

Third, along several dimensions, Chile has the most liberalized school market in the world, one which might actually give parents the ability to react to data on school effectiveness. In urban areas, more than half of all schools are private, and most of these are run for-profit. About 90 percent of all schools, religious and secular, are voucher-funded, and about half of the private ones charge tuition in addition to the voucher.

We study the effect that being identified as a SNED winner has on a number of schools' outcomes. First, we consider their 1st and 9th grade enrollments, as well as the number of classes they operate at these levels. We focus on these grades because they are the entry points into most schools, and thus perhaps more sensitive to changing demand. Second, we study the probability that schools charge tuition, and the amount they charge. This reflects that schools might respond to increased demand not by expanding but by raising their prices, a possibility we investigate in part because we do not have measures of excess demand. Third, we consider schools' socioeconomic composition measured using a vulnerability index, household income, and parental schooling. This reflects that schools could leverage the awards and increased demand by becoming more selective.

The key finding is that through five rounds of the program, there is no consistent evidence that SNED awards affect any of these outcomes. Our point estimates are often close to zero, although for some outcomes they are sometimes consistent with non-trivial effects. Nevertheless, the lack of evidence of a positive impact holds despite data from multiple allocations and through three robustness checks.

First, we address the possibility that the SNED's (more than one hundred) homogeneous groups might not identify sets of schools that are effectively in competition with each other. To do so, we consider sets of schools that in addition to belonging to the same group, operate in the same municipality. This results in smaller comparison groups, since there are 341 municipalities in Chile, and in urban areas they often identify compact and homogeneous neighborhoods. Second, to explore the possibility that more educated parents are more sensitive to data on school quality, we restrict attention to homogeneous groups of higher socioeconomic status. Third, we restrict attention to the two most recent

SNED rounds, addressing the possibility that parents need time to understand such schemes, and the fact that the dissemination of SNED results has increased over time.

In short, our results suggest that information on school effectiveness—at least as it is delivered by the SNED—does not seem to substantially affect schools’ market outcomes. This finding is consistent with several possibilities. First, while parents might value effectiveness, information on it might ultimately not affect school selections based on characteristics like proximity or peer quality. Second, the SNED might not have sufficiently registered with parents, despite its decade-long existence. Third, the scheme might not produce “news” if parents are able to deduce its essential results on their own. Such sophisticated parents, further, might discount noisier inputs into the index. Whichever is the case, our findings suggest caution in reaching conclusions on the impact of information related to school effectiveness.

By way of closing this introduction, we note that the SNED was designed in part as a teacher incentive scheme—in addition to being identified as effective, winning schools’ teachers are paid an annual bonus equal to about half a monthly salary. Previous work on the SNED has focused on evaluating the impact of these bonuses on testing achievement. We do not attempt such an analysis here, mainly because our regression discontinuity approach is likely not suited to this purpose, as the existence of the bonus could affect behavior at schools that end up on either side of the cutoffs that determine selection. We note, however, that to the extent that these bonus payments render winning schools more desirable, they provide further reasons to expect positive effects of the awards on their market outcomes, making our failure to find these all the more surprising.

The rest of the paper proceeds as follows. Section II provides background on Chile’s school system, and Section III discusses the SNED. Section IV presents the identification strategy, Section V reviews results, and Section VI concludes.

II. Chile’s school system

In 1981, Chile introduced school finance reforms creating one of the most liberalized school markets in the world. Three types of schools operate in Chile:

- 1) *Public* or *municipal* schools are run by 341 municipalities or communes,⁷ which receive a per-student subsidy from the central government. These schools cannot turn away students unless oversubscribed, and are the suppliers of last resort.
- 2) *Private subsidized* or *voucher* schools are independent religious or secular institutions that receive the same per student subsidy as public schools. Unlike the latter, they have wide latitude regarding student selection.
- 3) *Private unsubsidized* schools are also independent, but receive no public funding.

In 2003, private institutions accounted for about 45 percent of all schools, and voucher schools alone for about 36 percent. In urban areas, these shares were 62 and 48 percent, respectively. All private schools can be explicitly for-profit, and Elacqua (2005) calculates that about 70 percent of them are indeed operated as such. Some are run by privately or publicly-held corporations that control chains of schools, but the modal one seems to be owned and managed by a principal/entrepreneur. There are few legal barriers to entry,⁸ and while we have no estimate on the frequency of transactions, it is not rare to see classified ads offering private schools for sale.

While initially subsidized schools were not allowed to charge tuition to supplement the voucher subsidy, this restriction was eased in 1994. At present about 50 percent of private voucher schools charge tuition, and back of the envelope calculations suggest that they raise resources equal to about 20 percent of their State funding. Public schools are allowed to charge fees only at the secondary level, although in practice few of them do.

III. The SNED

As the government liberalized the educational sector, it began exploring mechanisms to provide information that might aid parental school choice. In 1988 the SIMCE⁹ testing system came into existence, and as of the mid-1990s its results had been widely disseminated, partially through listings of schools' performance in newspapers.¹⁰ The government also began using SIMCE results to allocate resources. For instance, in

⁷ Municipalities in Chile are generally called communes, and we henceforth use this terminology.

⁸ Hsieh and Urquiola (2006), for instance, indicate that roughly one thousand private schools entered the market in the decade following the introduction of voucher financing.

⁹ *Sistema Nacional de Medición de la Calidad de la Educación*.

¹⁰ A previous testing system, the *Programa de Evaluación del Rendimiento Escolar*, was discontinued.

1990, it started using 4th grade scores to assign aid to under-performing schools (Chay et al., 2005).

A. The SNED: Basic details

In the 1990s, the government also began to consider using test scores to promote accountability and transmit incentives. This resulted in the introduction of the SNED, a system which seeks to identify outstanding public or subsidized private schools, and which distributed awards in 1996, 1998, 2000, 2002, 2004, and 2006.

In an initial step, the SNED assigns schools to “homogeneous groups” constructed in two stages. First, schools are placed into groups based on three characteristics: i) which of Chile’s thirteen administrative regions they operate in, ii) whether they are in the rural or urban area, and iii) the type of schooling they offer (primary only, secondary and primary, or special needs). In a second stage, each group is further subdivided using a cluster analysis methodology that groups schools according to the socioeconomic status of their students. This relies on data on parental schooling, household income, and a government-calculated vulnerability index.¹¹

Table 1 (Column 1, Panel A) shows that in 1998, for example, this resulted in schools being assigned to 114 homogeneous groups containing an average of 80 institutions. Among primary schools, these groups accounted for 57 and 72 percent of the variation in income and mothers’ schooling, respectively. The total number of groups has remained roughly stable since then; the first SNED round, 1996, used a different methodology that resulted in only 8 groups, and this is one reason we ignore it below.¹²

The second step in the implementation of the SNED is the calculation of the six sub-indices detailed in Table 2. These are aggregated to a single SNED index with a weighting scheme that gives the greatest importance to testing performance. Specifically, schools’ test score levels and their inter-cohort changes receive weights of 37 and 28 percent, respectively. Retention and promotion rates also enter into the calculation, as do

¹¹ This measure (the JUNAEB index) is calculated at the school level to target school lunch-type subsidies.

¹² The main reason for the smaller number of groups is that in 1996 these were constructed on a national rather than regional basis. Additionally, in other parts of the methodology (discussed below) the 1996 round relied on different data. For instance, it did not use 4th grade test scores, repetition, or drop out rates.

data from surveys that seek to measure parental involvement and working conditions. Figure 1 (Panel A) plots smoothed values of the relationship between the SNED index—and each of its six sub-indices—and schools’ average mothers’ schooling. As visually clear, it is largely the test score level component (the top segment) which induces a positive relationship between the overall index and socioeconomic status (SES).¹³

In a third step, the schools within each homogeneous group are ordered according to their aggregate index, and those above a given cutoff are given awards. Each group’s cutoff is set such that winning schools account for about 25 percent of total enrollments.¹⁴

B. SNED: The treatment

For the two years the award is in force, SNED-winning schools are subject to two treatments. First, teachers in selected schools are paid an annual bonus that presently averages about 1,000 dollars.¹⁵ Second, winning schools are publicly identified as performing well relatively to an arguably meaningful comparison group. Importantly, only information on schools award status, and not on their index values, is made public.¹⁶

There are several ways in which the list of winners is publicized. Since the SNED’s inception, it has been announced (by the Minister of Education) in a press conference, and then published in a national newspaper the following day. Administrators at winning schools, particularly at profit or prestige-maximizing institutions, might be expected to inform parents, with subsequent word-of-mouth dissemination.

Table 3 summarizes the results from a Ministry of Education survey in which schools were asked whether they apprise parents regarding their performance in the

¹³ In linear specifications, only the sub-index that measures test score levels, and the overall SNED index, are significantly related to mothers’ schooling or household income.

¹⁴ In the last SNED round, 2006, this was expanded to 35 percent of schools, an issue we return to below.

¹⁵ The real value of this payment has increased over time. In 1996 it was about 470 dollars, but climbed to 565 and 1,070 dollars by 2000 and 2006, respectively. These figures are averages. In practice, a global allocation is made to each school, and 90 percent of it is distributed according to hours worked. The administration has discretion over how the remainder is split; in practice most schools seem to distribute it evenly among instructors. Additionally, as noted, in 2006 the SNED was expanded such that schools accounting for 35 rather than 25 percent of enrollments receive the award—schools accounting for the first 25 percent receive a full bonus, while the rest receive only 60 percent of the full amount. Below, we ignore this issue, treating all schools as if they received the full bonus. We do so because parents only find out whether schools receive an award or not. Additionally, the distinction does not affect our key results.

¹⁶ With significant effort motivated parents could get a sense of 65 percent of the index, since test score levels (and implicitly, changes) are public (but not in the normalized form eventually used in the SNED).

SNED and the SIMCE tests more generally. Although one must keep in mind these data are self-reported in an environment in which administrators are encouraged to make information available, they suggest that by 2003 between 80 and 90 percent of schools engaged in dissemination by way of informing their parents' association, sending notes home, or raising the issue during PTA-type meetings.

Second, since 2002 (i.e., for the last three rounds) a Ministry of Education website has allowed parents to determine multiple schools' SNED status. Figure 2 shows an image of this site, which after parents select a given commune, returns a listing of all the schools within it, and indicates whether they won an award.

Third, since 2004 (for the two most recent rounds), some communes have intervened in the process by helping winning schools to advertise their status in a uniform way. For instance, Figures 3a and 3b present pictures of schools in the communes of *Santiago* and *Providencia*, respectively.¹⁷ These pictures display standardized banners that these municipalities posted at winning schools during the 2006-2007 round. The images show close-ups of the banners and illustrate their placement in visible places.

Further, information regarding the SNED is not released into a vacuum, since the 1990s afforded the public with exposure to school performance data. Figure 4 illustrates this by showing the front page of a newspaper announcing the edition contains the scores of all schools in a given region. Further, Figure 5 contains the headline and initial text of a story on the SNED itself, including a synopsis of its methodology.

We underline that to the extent that the SNED seeks to control for SES, the information it generates is quite different from that which simple test scores transmit. For instance, Mizala et al. (2007) show that about 80 percent of the variation in school-level test scores in Chile can be explained by parental schooling and household income, which implies that rankings based on testing performance largely reflect socioeconomic status. For instance, two programs that chose the top fifth of schools based on their mean language score and their average mothers' schooling would agree on the selection or non-selection of about 85 percent of all schools. By design, the SNED produces qualitatively different information, since it selects schools from both "rich" and "poor" homogeneous

¹⁷ By population, *Santiago* is the largest commune in Chile. Both *Santiago* and *Providencia* are in the *Santiago* metropolitan area, which contains about 50 communes.

groups. For a simple exercise, compare the 2002 SNED allocation with an award given for having language scores in the top quartile in the same year. 63 percent of schools would receive neither, and 8 percent both; 29 percent would receive one but not the other.

Further, each SNED round in some sense produces new information. Among about 8,300 schools in the five rounds we focus on, 50 percent of schools either never or always received an award (48 and 2 percent, respectively). 22 percent were selected once, and 15, 10, and 4 percent won awards 2, 3, and 4 times, respectively.¹⁸

Finally, it is important to be clear that the SNED only seeks to approximate school effectiveness. One way to isolate schools' value added would be to run a large number of randomized experiments, something which is all but impossible for most educational systems to do once, let alone on a sustained basis. The bottom line is that while one could envision better ways of generating data on effectiveness, the SNED represents a reasonable and feasible approach (as mentioned, New Jersey, New York City, and North Carolina generate and use information in broadly similar ways).

We nevertheless mention, purely as a descriptive result, that winning an award is positively and significantly correlated with subsequent performance even controlling for observable characteristics. For instance, Column 1 in Table 4 shows that primary schools that received an award in 2002 had higher math scores in 2004, even after controlling for mothers' schooling and household income (Column 2), and for homogenous group dummies and testing performance in the previous two years for which scores are available (columns 3 and 4).¹⁹ Columns 5-8 suggest a similar conclusion for secondary schools.

¹⁸ The following table shows the distribution of schools according to the number of awards received.

Total number of awards	All six rounds	Five rounds considered below
0	48.0	48.0
1	22.7	21.8
2	13.6	14.9
3	8.2	8.7
4	4.4	4.5
5	2.3	2.1
6	0.8	--
Total	100.0	100.0

¹⁹ We postpone a discussion of the data to Section IV.B.

IV. Empirical strategy

The manner in which the SNED is assigned makes feasible a regression discontinuity (henceforth, RD) design. Figure 6 illustrates this among urban and primary-level homogeneous groups. Panel A describes the allocation for 12,496 school/year observations that combine data from the 1998, 2000, 2002, 2004, and 2006 SNED waves. It plots SNED index-cell means of a dummy indicating whether schools obtained an award, where the index is measured relative to the cutoff in each school's homogeneous group. We normalize each group's cutoff to zero so that we can combine data across groups and years. Additionally, for visual clarity index values are in 0.1 point bins (Imbens and Lemieux, 2007). Panel A makes clear that the probability of selection jumps discretely at the cutoff scores—the small amount of (barely visible) noncompliance is due to the first round, 1998 (we present regression evidence below).

This discontinuous relationship can be used to investigate the effect of the SNED on schools' market outcomes. Following van der Klaauw (2002) one could implement:

$$y_{igt} = \beta E(SNED_{igt} | index_{igt}) + f(index_{igt}) + \varepsilon_{igt} \quad (1)$$

$$E(SNED_{igt} | index_{igt}) = \gamma I\{index_{igt} \geq cutoff_{gt}\} + g(index_{igt}) + \zeta_{igt} \quad (2)$$

where y is an outcome of interest, i indexes schools, g orders homogeneous groups, and t stands for different SNED rounds. $E(SNED_{igt} | index_{igt})$ is the probability of receiving an award conditional on having a given index value, f and g are flexible functions of the index, and $I\{index_{igt} \geq cutoff_{gt}\}$ is a dummy that takes on a value of one if a school's index is greater than or equal to the cutoff in its respective homogeneous group. If f and g are continuous at $cutoff_{gt}$ and $E(SNED_{igt} | index_{igt})$ is discontinuous (Figure 6), then β is non-parametrically identified at that point. Intuitively, under the mentioned continuity assumptions, other factors affecting y will be similar for schools just above and below the cutoff, and their comparison will mimic a randomized design. Discrete differences in outcomes at the cutoff can then be attributed to the award itself.

Below we assume we have a sharp rather than a fuzzy design, and instead of implementing (1)-(2), use a reduced form approach:

$$y_{igt} = b I\{index_{igt} \geq cutoff_{gt}\} + h(index_{igt}) + e_{igt} \quad (3)$$

We do this in view of the fact that in our data, satisfying $I\{Index_{igt} \geq Cutoff_{gt}\}$ and actually receiving an award are almost equivalent—in all but the first SNED round we use, the correspondence is indeed perfect. Additionally, we specify h as a quadratic in the index, and also estimate (3) within arbitrarily narrow bands close to the cutoff scores.

A. What can an RD design identify in this context?

While Figure 6 (Panel A) shows that the SNED produces a “clean” RD, it is relevant to ask what this can identify in our context. As detailed in Section III, the SNED treatment has two components: teachers in winning schools receive bonuses, and these schools are identified as performing well relative to a specific reference group.

Previous work on the SNED has analyzed the effects of the bonuses on testing achievement (Contreras, Flores, and Lobato, 2003). We do not attempt this because our sense is that the RD approach is not suited to it, since the SNED’s existence might affect the behavior of teachers who know their school is within range of winning, regardless of whether this eventually happens or not. In this case, the intensity of the incentives would not vary discretely at the cutoff, even though the bonus payment of course would.

We focus instead on the effect of the awards on schools’ market outcomes. Schools’ award status of course does vary discretely at the cutoff (particularly since as stated, index values are not publicized). As stated, to the extent that bonus payments render winning schools more desirable, they provide a further reason to expect positive estimates from reduced form approaches like (3).

B. Outcomes, hypotheses, and data

We explore how SNED selection affects the following school level outcomes:

- 1) *1st and 9th grade enrollments*. To the extent that selected schools experience higher demand, they might end up with greater enrollment shares. We focus on these grades

because they are the entry points into most schools, and school choice might therefore be least constrained at these junctures.²⁰

- 2) *Number of 1st and 9th grade classes operated.* Urquiola and Verhoogen (2006) suggest that profit-maximizing Chilean schools view the choice of the number of classrooms to operate as a serious one, if only because it influences their fixed costs. Additionally, they present evidence suggesting that higher quality schools experience higher demand and operate more classrooms. One might expect, therefore, that SNED winners would be more likely to open an additional classroom. For this and the previous outcome, we rely on annual 1997-2007 administrative data collected at the beginning of each academic year (around February).
- 3) *Tuition.* Since 1994, private voucher schools have been allowed to charge tuition add-ons, and at present about 50 percent of them do. Using 1997-2006 administrative data, we study whether schools charge tuition at all, as well as the average amount they charge. We consider the former for two reasons. First, simply charging tuition is a signal of perceived quality in Chile, as parents can always use municipal schools for no charge. Second our tuition data are not grade-specific, and may therefore only slowly reflect SNED-induced increases that might first affect lower grades. In contrast, it is easier to observe if a SNED award induces a school that did not charge tuition to begin doing so.
- 4) *Socioeconomic composition.* Finally, we explore whether winning an award affects schools' socioeconomic composition, something one might expect if a perception of higher quality allowed schools to attract a "better" clientele. For this we rely on two types of data. The first is a government-calculated school-level vulnerability index that considers variables like parental schooling and employment, for which we have annual 1st and 9th grade (1997-2007) observations.²¹ For more direct measures, we also use data from the SIMCE system, which at times of testing sends a questionnaire to students' homes. This provides information on household income and parental

²⁰ We explored results for the 7th grade, as some secondary schools begin operations at this grade. We omit them because they produce conclusions similar to those for the 9th grade, while providing smaller samples.

²¹ The index is calculated by JUNAEB, an agency which uses it to target school-lunch type subsidies. The variables it uses are: a) the percentage of mothers with less than eight years of schooling, b) the percentage of household heads with less than eight years of schooling, c) the employment category of the household head, d) the percentage of children who receive welfare payments, e) the percentage of children without access to adequate sewerage systems, and f) the percentage of students in households classified as poor.

schooling. As part of the testing system, however, these data are available only for the 4th, 8th, and 10th grades, and each grade is tested (about) only every third year. We discuss further adjustments this necessitates in the results section below.

C. Comparison groups

The most natural way to implement an RD design in our setting is to compare—within homogeneous groups—the outcomes of schools that just qualify for an award with those of schools that just miss receiving one. Such are the main results we review below. To further the probability that we analyze sets of schools effectively in competition with each other, we present other results in which we apply the strategy not within homogeneous groups, but rather among schools that in addition to being in the same group, are located in the same commune. This is feasible because communes are subsets of regions (the basic geographical unit used in the construction of the homogeneous groups), and is useful because they come closer to identifying areas where school choice might take place. For instance, the metropolitan area of *Santiago*, the largest in Chile, has about 50 communes, and although children can in principle attend school in any of these, in practice many stay in their commune of residence.²²

Figure 7 illustrates the spirit of this analysis by showing a hypothetical homogeneous group that includes schools in three communes, labeled A-C. The cutoff score—a single one for the whole group—separates schools that get an award from those that do not. We use the schools in each of these communes as a *commune/homogeneous group*—i.e. Figure 7 would yield three rather than one quasi-experiment. Table 1 shows the impact this has on the number of groups considered. Column 1 (Panel A) shows that while for 1998 there were a total of 114 homogenous groups, the combination with roughly 314 communes results in 1,784 commune/homogenous groups.²³ As Figure 7 suggests, the latter continue to produce a “clean” first stage (Figure 6, Panel B).

²² The 2002 SIMCE data suggest that about 89 percent of 4th graders using subsidized institutions go to school in the commune in which they live. In Metropolitan Santiago, this figure goes down to 79 percent. As elsewhere, it is also more common for children in secondary school to travel further to school, and they therefore cross commune lines more frequently.

²³ To include a commune/homogeneous group, we require that it contain both winning and losing schools.

From the point of view of an RD design, this exercise involves a tradeoff. On the one hand, communes facilitate sorting, and so produce even more homogeneous sets of comparison schools. For instance, in 2002 a full set of homogeneous group dummies accounted for 57 percent of the variation in income at the 4th grade level, and 72 percent of the variation in average mothers' schooling. Using commune/homogeneous group dummies, these numbers increase to 68 and 81 percent, respectively. The intuition is also illustrated in Figure 7, where we have arbitrarily drawn commune A to be the one with the highest average performance within the homogeneous group, followed by B and C.

On the other hand, moving to commune/homogeneous groups comes at the cost of making comparison groups smaller. For example, while in the urban area primary homogeneous groups contain an average of about 71 schools, commune/homogeneous groups have an average of 7 (Table 1), such that the density of observations close to the cutoffs can go down significantly (also illustrated in the hypothetical case of Figure 7).

D. Samples and analyses windows

Two final issues define the samples analyzed below. First, we restrict attention to urban comparison groups, since urban parents enjoy greater school choice and therefore more opportunities to leverage information on school quality. Second, there is the issue of what chronological windows to analyze.

We consider two alternatives. First, we use what we label a “2-year sample” (Table 1, Panel B) designed to study award effects in two year windows, the most natural timeframe to the extent that the SNED waves are two years apart. In this sample, we include schools with valid indices in each round we consider (1998, 2000, 2002, 2004, and 2006), and for which there are at least enrollment outcomes one year prior to each allocation (to check for continuity), as well as two years after. To include the 2006 round, we use the 2007 outcomes as if they were for 2008. We could have omitted this last round, but opted to retain it so that we can consider the longest possible timeframe and largest possible samples. This issue arises only for enrollment and vulnerability, for which we have 2007 data (collected early in the academic year). For all other outcomes, we only have data up to 2006. For the sake of larger samples, we also combine

observations from different rounds (clustering standard errors at the school level), and the resulting “stacked” data are described in Column 6 (Table 1, Panel B). Using such data implies that in looking at outcomes two years after each round, for instance, we are asking if schools that received an award in 1998 had higher enrollments in 2000; whether those that received one in 2000 had higher enrollments in 2002, and so on.²⁴

Additionally, Panel C (Table 1) describes a “4-year” sample which allows us to explore effects four years after the 1998, 2000, 2002, and 2004 rounds.²⁵ This is useful in looking at outcomes that might be slower to change, but raises a caveat because in general the fact that a school wins an award one year increases the probability that it will do so again.²⁶ This means that while schools that just make and just miss an award may be comparable at baseline (as shown below), four years later some of the former will have received two awards, while the latter will have at most one. This is likely to bias results toward finding positive effects in the 4-year samples.

V. Results

We first present results for primary-level homogeneous groups, then consider primary commune/homogeneous groups, and finally turn to the secondary level.

A. First stage

Table 5 presents the first stage results when we analyze the program’s allocation among homogeneous groups. Panel A focuses on the 2-year sample (defined in section IV.D), and Column 1 shows that among the 12,496 school/year observations it contains, having a baseline index greater than or equal to zero—the normalized cutoff score in schools’ respective groups—raises the probability of receiving an award by about one. Not surprisingly (in light of Figure 6), the R^2 in this regression is close to one.

²⁴ We also carried out our analyses considering outcomes measured one rather than two years after each allocation. We omit these to save space, as they produce similar results.

²⁵ Again, using the last of these requires assuming the 2007 outcomes are actually for 2008.

²⁶ This is despite the fact that some of the SNED sub-indices are measured with some noise, e.g., the inter-cohort changes—see Kane and Staiger (2002), Chay et al. (2005), and Mizala et al. (2007).

While the first stage results are stable in the remaining columns, we nonetheless discuss them because these describe the specifications and samples used in the tables below. First, Column 2 includes a quadratic in schools' baseline index as a control, and Column 3 restricts the sample to schools with indices within 0.50 points of their cutoffs, reducing the sample by about half.²⁷ The remaining columns further restrict the sample in two ways. First, to study the possibility that more educated households are more responsive to data on school quality, column 4 considers only schools in higher socioeconomic status homogeneous groups.²⁸ Second, column 5 only uses data from the last two (2004 and 2006) SNED waves. This investigates the possibility that parents might need an adjustment period to understand and utilize the information the SNED delivers, and takes into account the fact that the intensity of dissemination has increased over time. The fit is strong throughout, and the R^2 reaches one in the final column. This reflects that the small amount of "slippage" in the allocation took place in 1998. Panel B describes analogous results for the 4-year sample (Section IV.D), which requires excluding the 2006 wave, thereby reducing the sample from 12,496 to 9,659 schools. The first stage fit remains strong across all specifications.

Finally, still considering the 4-year sample, Panel C explores whether the probability of winning *additional* awards varies discretely at the cutoffs. Column 1 shows that schools with a baseline index greater than or equal to zero are 35 percent more likely to win another award two years later.²⁹ Adding a quadratic in the index (Column 2) reduces the estimate by about half, but it is still significant there and in columns 3 and 5 (not in the higher socioeconomic status sample, Column 4). Significance is of course consistent with some persistence in SNED awards, which as stated, should bias our results toward revealing significant effects four years after each allocation.

A. Enrollment

²⁷ We experimented with narrower bands, and with requiring that schools be one of, for example, four of the institutions closest to the cutoff. These exercises produced qualitatively similar conclusions.

²⁸ That is, we use only homogeneous groups which the SNED methodology itself catalogued as higher SES.

²⁹ This is to be expected in only given that schools' test score levels (an input into the aggregate index) are correlated with their socioeconomic composition, which is likely to remain fairly stable over time.

Turning to the results for enrollment, we first implement a “continuity check” by studying whether enrollment prior to the allocation was greater among schools that obtained an award. Such a difference, if it existed close to the cutoffs, would question an RD approach. Figure 8a (Panel A) first presents the graphical evidence for the 2-year sample. It plots index cell means of schools’ 1st grade enrollment one year before the baseline allocations, along with the fitted values of locally weighted regressions estimated separately for institutions with negative and non-negative index values. The figure shows an overall positive association between enrollment and schools’ relative index, illustrating that even within homogeneous groups, schools that received an award tended to be larger prior to doing so. Table 6 (Panel A) illustrates this in regression form, showing this difference was equal to about eight 1st grade students, equivalent to about 20 percent of a standard deviation.³⁰ Columns 2-6 show, however, that this difference falls to less than one student and ceases to be significant when we use a quadratic of the SNED index as a control, or when we focus on more restricted samples. Graphically, this is reflected in that there is no visible break at the cutoff in Figure 8a, Panel A. In short, as required by the RD design, enrollment prior to each allocation appears to be smoothly related to the index in the vicinity of the cutoffs.³¹

Panel B (Table 6) considers enrollment two years after awards are made. While there is again a substantial difference in the simplest specification (Column 1), this becomes small and insignificant in columns 2 and 3; in the latter (which controls for the index and restricts the sample to schools closer to the cutoff scores), the point estimate suggests that on average, schools that just received an award had about one *less* 1st grader two years after doing so (relative to institutions that just missed an award). Column 4 replicates the sample from column 3, but controls for enrollment one year prior to the awards.³² The point estimate is now -0.2, and we can rule out differences greater than about 1.5 students. Columns 5 and 6 (higher SES groups and recent rounds) suggest similar conclusions, although with somewhat smaller samples and higher standard errors.

³⁰ As stated, we selected the samples such that they would include schools with valid *enrollment* information in all relevant years. This is why the 12,496 observations in Table 5 match those for the 1st stage, in Table 4. For other outcomes, the sample sizes are generally slightly smaller due to missing data.

³¹ We also note that the density of observed SNED index levels (Figure 1, Panel B) does not suggest that schools or administrators in any way manipulate the running variable (see McCrary, forthcoming).

³² We could also compare changes, implicitly restricting the coefficient on prior enrollment to be one; we opt instead for the more flexible specification in column 4.

Thus, the regressions provide no evidence that SNED awards led schools to experience greater enrollment growth. This is also illustrated in Figure 8a (Panel B), which plots the fitted values from Panel A (one year prior to the awards) and adds a similar plot using data from two years after. The plots shifted down over three year spans, which could reflect declining cohort sizes or changes in data collection procedures. There is no evidence, however, of a change in the relationship close the cutoffs. Finally, panels C and D in Table 6 present analogous regression evidence for the 4-year sample with similar results, despite the fact that we expect these estimates to be biased upward.

B. Number of classes in operation

We now ask whether award winners were more likely to open additional classrooms. To some extent this is a robustness check, since given the absence of evidence of changes in enrollment, increases in the number of classes would correspond to costly class size reductions. Panels C and D in Figure 8 present the graphical evidence, which not surprisingly is quite similar to that for enrollment in panels A and B.

The regression results are in Table 7. Beginning with a continuity check using data one year prior to each allocation, Column 1 (panels A and C for the 2- and 4-year samples, respectively) shows that even among homogeneous groups schools that eventually received an award operated 0.11 more 1st grades, equivalent to a tenth of a standard deviation. In both samples, the differences become smaller and insignificant as we add a quadratic in the index or restrict the sample (columns 2-6). The lack of a size advantage for winning schools, further, holds whether we look at outcomes two or four (panels B and D, respectively) years after each allocation. In short, we find no evidence that schools that received an award were more likely to grow.

C. Tuition

The above results suggest that schools selected by the SNED either do not experience higher demand, or else choose to turn away students rather than expand. While it would be surprising for schools to entirely resist the opportunity to increase their

revenues, doing so might reflect that raising class sizes or opening new classrooms involves risk. Additionally, schools might have made implicit commitments to parents regarding class and school size.

We unfortunately do not have measures of excess demand, but in this and the next section we study two other ways in which schools could leverage increased demand: by raising their prices or by becoming more selective in terms of socioeconomic status. The first is relevant because the period we analyze was one in which the prevalence and magnitude of tuition charges were increasing. For instance, in 1997, 38 percent of voucher schools charged add-on tuition, and the average was about 3 monthly dollars. By 2006, these figures had increased to 50 percent and 14 dollars, respectively.

We first consider whether schools charge tuition at all,³³ which is useful partially because we do not observe grade-specific tuition, and average charges may move slowly if schools raise prices only for entering cohorts. In contrast, going from zero to positive tuition is an outcome that is easily observed. Figure 8a presents the graphical evidence, which is suggestive of no effect—there is no break in the relationship one year prior to the allocation (Panel E), and the fitted values one year prior and two years later essentially overlap (Panel F), particularly close to the cutoff. For more detail, Table 8 (Column 1) suggests that even within homogeneous groups, schools that receive an award are on average more likely to charge tuition, although the difference is not great. Controlling for the SNED index or restricting samples close to the cutoffs, however, eliminates significant differences—the point estimates in Column 4, our preferred specification, are essentially zero. In the two year sample (Panels B) they rule out that awards increase the probability of charging tuition by more than two percent.

The evidence on absolute tuition (panels A and B of Figure 8b, and Table 9) points to similar conclusions. Whether we consider outcomes prior to the allocation or two or four years thereafter, award winners on average collect higher tuition (about 500 more pesos per month, equivalent to roughly a tenth of a standard deviation). This is expected, if only given the positive correlation between the SNED index and socioeconomic status

³³ As stated, primary municipal schools cannot charge tuition. We verified that close to the discontinuities, there are no differences in the proportion of schools that are municipal (as opposed to private voucher).

(Figure 1). As before, however, these differences become small and insignificant when we control for the SNED index or restrict the sample.

D. Socioeconomic composition

Turning to socioeconomic composition, we first analyze whether winning an award lowers schools' vulnerability indices, which range from 0 (highest socioeconomic status) to 100 (lowest). Table 10 (column 1) and Figure 8b (panels C and D) illustrate that even within homogeneous groups, winning schools have lower average vulnerability indices—about four percentage points so (equivalent to one fifth of a standard deviation). These estimates become smaller and insignificant as one adds controls or restricts samples close to the cutoffs (visually, there is no break at the cutoffs). In short, the evidence does not suggest that SNED awards improved schools' SES, although these estimates are somewhat less precise than those for enrollment, for instance, and in some cases do produce positive point estimates.

We complement this evidence with direct measures of SES, although this raises several data-related issues. Specifically, students' socioeconomic characteristics are measured at the 4th, 8th, and 10th grades (through the SIMCE testing system) and each of these grades is surveyed only every third year.³⁴ Adapting these data to regressions like those above therefore requires significant adjustments. First, we assume 4th grade information is representative of primary-aged children, ignoring the 8th grade (if awards mainly impact the composition of entering cohorts, capturing changes using 8th grade data would require longer time series than we have). Second, we use only the 2000, 2002, and 2004 SNED waves. For the first two, we are able to look at outcomes two and four years later; for the last, only two years after each allocation.³⁵

With these caveats, Figure 8b (panels E-H) and tables 11 and 12 present results on average mothers' schooling and household income, respectively. In each table, column 1

³⁴ More specifically, we have 4th grade observations for the 1999, 2000, 2002, 2005, and 2006 rounds.

³⁵ Specifically, we use the 1999 data as the “pre” observation for both the 2000 and 2002 waves; and the 2002 tests as the pre-observation for the 2004 wave. For the 2000 wave, the outcome two years later is naturally provided by the 2002 round; we use the 2005 test for the 4-years later outcome (as if it had been collected in 2004). For the 2002 and 2004 waves, outcomes two years later are provided by the 2005 (again, as if it had been collected in 2004) and 2006 waves.

indicates that even within homogeneous groups, SNED-winning schools have “better” peer groups—they contain children whose mothers have about 0.6 more years of schooling, and whose household income is about 20 thousand pesos higher (about 0.3 and 0.4 of a standard deviation, respectively). These differences mostly cease to be significant, however, when we restrict the sample to schools close to the cutoff; they mostly also become smaller, and in some cases even suggest negative award effects.

We underline that these results should be viewed with greater caution. The sample sizes are smaller than those above, and the data are collected using questionnaires which parents sometimes do not send back.

E. Robustness checks: Commune/homogeneous groups and secondary schools

The estimates presented thus far rely on the SNED-constructed homogeneous groups. As a robustness check (described in Section IV), we carry out similar exercises comparing schools that are in the same commune in addition to being in the same homogenous group. Appendix tables A.1-A.4 (Panel A) implement this exercise, although for the sake of space we limit the discussion and focus on only three outcomes: enrollment, whether schools charge tuition, and vulnerability.³⁶ The conclusions are similar to those above save for two differences. First, the estimates are somewhat less precise in part because the exercise results in smaller samples close to the cutoff scores. This may be behind a few estimates suggesting significantly positive and negative effects, although there is not consistent evidence in either direction. Second, even more than among homogenous groups, there is persistence in SNED awards.

Finally, Tables A.1 (Panel B) and A.5-A.7 consider the effects of the SNED at the secondary level. We also limit these tables to three outcomes: enrollment (in this case at the 9th grade level), whether schools charge tuition, and vulnerability (also measured at the 9th grade level). The same two caveats raised with respect to commune/homogeneous groups apply: relatively less precision and greater persistence in SNED awards. That said, the conclusions are again qualitatively similar.

³⁶ More specifically, Table A.1 (Panel A) presents the first stage. Tables A.2, A.3, and A.4 present the enrollment, tuition, and vulnerability results, respectively. We omitted the remaining outcomes because they produce similar conclusions—the associated tables are available upon request.

VI. Discussion

A longstanding debate in the economics of education concerns to what extent improving educational quality, say as measured by test scores, could be achieved simply by relying on competition, and to what extent it would necessitate intervention through initiatives ranging from accountability (e.g., *No child left behind*) to raising expenditure.

Researchers have noted that for competition alone to really deliver, it must be that parents' choices, and therefore schools' outcomes, depend on schools' effectiveness in producing academic attainment. If in contrast households view school choice as a means to obtain better peer groups or reduce travel time, then competition might encourage schools to improve on dimensions other than academic value added.

Over the past decade the literature has produced evidence that parental school choice is indeed influenced by information on school quality, at least as measured by test scores. Yet this does not answer the question at hand because, going back to the Coleman (1966) report, it is clear that test scores conflate school effectiveness and peer quality. In the specific case of Chile, in fact, a ranking of schools based on their test scores is quite close to one based on their socioeconomic status.

A key gap in our understanding of school markets, therefore, concerns whether parental choices and schools' outcomes would respond to data on effectiveness per se, even if it were not necessarily correlated with peer quality. This paper has attempted to begin filling that gap by analyzing Chile's SNED, a scheme that seeks to measure effectiveness in a manner the public might understand. Perhaps surprisingly, we fail to find systematic evidence that SNED awards impact schools' market outcomes.

These results are consistent with several possibilities. First, while parents might value school effectiveness, information on it might in the end not sway school choices based on characteristics like peer composition. This would rationalize stronger reactions to data on average performance than to information approximating effectiveness. It would also be consistent with markets getting "stuck" in configurations in which wealthier parents, essentially due to coordination failures, are unable to access the most productive schools (Rothstein, 2006). These issues might be particularly relevant in Chile, where school choice has likely given schools ample opportunities to differentiate.

Another potential explanation for our findings is that the SNED might not have registered with households, despite the fact that the program is eleven years old and there are many ways for parents to find out about it. Alternately, the information it produces might be not “news”—parents might be able to deduce it on their own. Such sophisticated parents might also realize that some of the information contained in the SNED might be noisy, and decide to discount it. Finally, schools might respond to awards in ways that precisely counteract demand responses (for instance, by becoming more selective as demand increases), although one would expect this to show up in our measures of socioeconomic composition or tuition, and there is no clear evidence of that.

Regardless of the explanation, our results have multiple policy implications. Most immediately, “shaking” school markets through the provision of information might be harder than is commonly assumed. More specifically, policy makers would like competition to reward and weed out firms along dimensions they value, and this may be hard to achieve regarding educational effectiveness. If this is the case (and on a more speculative note), Chile might want to consider using test scores to more aggressively provide incentives for schools.

More broadly, this raises a contrast between “American” and “Chilean” style accountability. The U.S. has never implemented a national K-12 performance exam, and in some states households still have difficulty accessing data to compare achievement in their school with that in other (let alone comparable) institutions. Nonetheless, through *No Child Left Behind* and their own initiatives, many states use test scores to offer schools carrots and sticks. In contrast, while over the past two decades Chile has aggressively collected and disseminated school performance data, it has mainly exploited this information to inform consumers, offering schools few test-based incentives.

In part, these differences reflect that many policy makers in the U.S. have seen accountability as an alternative way to generate incentives, in view of difficulties in expanding school choice. In contrast, one could say many policy makers in Chile have seen the successful expansion of school choice as the key intervention, with accountability-type initiatives playing a secondary role.

The impact of these approaches in their respective settings is controversial. Our reading is that in the U.S. there is an emerging consensus that accountability can change

performance, albeit with, at times, unintended or distributional consequences.³⁷ In contrast, our sense is that in Chile there is greater disappointment regarding the impact reforms have had on average academic performance (which is not at all to say these might not have raised average welfare). Because the approaches described are not exclusive, this suggests Chile might want to consider further emphasizing the provision of direct American-style incentives.

This point is related to a broader discussion regarding possible routes to improving social services in developing countries. The World Bank (2004), for instance, suggests that information provision in itself can be quite effective, allowing users to better select and monitor providers. Other work, like Banerjee and Duflo (2006) and Duflo and Hanna (2006), is consistent with assigning a greater role to direct incentives, and the results here would tend to support the latter.

Last but not least, having invested extensively in testing information and schemes like the SNED, the Chilean government might choose to explore alternate ways of disseminating their results. For instance, our sense is that economists and policy makers should devote more thought to better ways of transmitting information on school performance. In Chile, this discussion has focused (and entailed some advances) on letting schools know where their results are relatively strong, where they are particularly weak, and what this may reflect. This should also extend to letting parents know what test scores mean beyond a number that is higher or lower in this or that school. Additionally, Chile might find it worthwhile to invest in obtaining the type of data—such as that collected in a handful of U.S. states—that allows calculation of individual-level gains as students progress through the school system.

The bottom line is that as so many interventions in education, the provision of information might not be a “silver bullet” even when combined with extensive school choice. As elsewhere, success might depend on the specifics of program design.

³⁷ For instance, there is debate on whether accountability produces knowledge gains that generalize to various testing instruments, or rather leads schools to emphasize “teaching to the test” that impacts performance on only high-stakes exams; see Jacob (2007) for a review. There is also concern that *No Child Left Behind* leads schools to focus on students at the margin of attaining given levels of proficiency, leading them to ignore low or high-achievers; See Reback (2006) and Neal and Whitmore Schanzenbach (2007).

References

Armour, D. and B. Peiser (1998) *Interdistrict choice in Massachusetts*, in P. Peterson and B. Hassel (eds.) **Learning from school choice**. Washington, D.C.: Brookings Institution Press.

Ascher, C., N. Fruchter, and R. Berne (1996) *Hard lessons: Public schools and privatization*. New York: Twentieth Century School Fund.

Banerjee, A., and E. Duflo (2006) *Addressing absence*. **Journal of Economic Perspectives**, 20(1), 117-132.

Bayer, P. and R. McMillan (2005) *Racial sorting and neighborhood quality*. NBER Working Paper No. 11813.

Bayer, P., F. Ferreira, and R. McMillan (2007) *A unified framework for measuring preferences for schools and neighborhoods*. Mimeo, Duke University.

Black, S. (1999) *Do better schools matter? Parental valuation of Elementary Education*, **Quarterly Journal of Economics**, 114(2), 577-599.

Bogart, W. and B. Cromwell (1997) *How much more is a good school district worth?* **National Tax Journal**, 50(2), 215-232.

Brunner, E., J. Sonstelie, and M. Thayer (2001) *Capitalization and the voucher: An analysis of precinct returns from California's proposition 174*, **Journal of Urban Economics**, 50, 517-536.

Card, D., A. Mas, and J. Rothstein (2007) *Tipping and the dynamics of segregation*, NBER Working Paper No. 13052.

Chay, K., P. McEwan, and M. Urquiola (2005) *The central role of noise in evaluating interventions that use test scores to rank schools*, **American Economic Review**, 95(4), 1237-1258.

Clark, D. (2005) *Politics, markets, and schools: Quasi-experimental estimates of the impact of autonomy and competition, from a truly revolutionary UK reform*. Mimeo, University of Florida.

Coleman, J.S., Campbell, E., Hobson, C., McPartland, J., Mood, A., Weinfeld, R., & York, R. (1966). *Equality of Educational Opportunity*. Washington, DC: Government Printing Office.

Contreras, D., L. Flores, and F. Lobato (2003) *Monetary incentives for teachers and school performance: The evidence for Chile*. Mimeo, Department of Economics, University of Chile.

Downes, T. and J. Zabel (2002) *The impact of school quality on house prices: Chicago 1987-1991*, **Journal of Urban Economics**, 52, 1-25.

Duflo, E. and R. Hanna (2006) *Monitoring works: getting teachers to come to school*. Mimeo, Massachusetts Institute of Technology.

Elacqua, G. and R. Fabrega (2004) *El consumidor de la educación: El actor olvidado en la libre elección de colegios en Chile*. Mimeo, Universidad Adolfo Ibañez.

Elacqua, G. (2005) *How do for-profit schools respond to voucher funding? Evidence from Chile*. Occasional Paper Series, National Center for the Study of Privatization in Education, Teachers College, Columbia University.

Epple, D. and R. Romano (1998) *Competition between private and public schools, vouchers, and peer group effects*, **American Economic Review**, 88(1), 33-62.

Figlio, D. and M. Lucas (2004) *What's in a grade? School report cards and the housing market*, **American Economic Review**, 94(3), 591-604.

Gallego, F. and A. Hernando (2007) *School choice in Chile: Looking at the demand side*. Mimeo. Economics Department, Universidad Católica de Chile.

Hanushek, E. (1981) *Throwing money at schools*, **Journal of Policy Analysis and Management**, 1(1), 19-41.

Hastings, J., T. Kane, and D. Staiger (2006) *Parental preferences and school competition: Evidence from a public school choice program*. NBER Working Paper No. 11805.

Hastings, J., R. Van Weelden, and J. Weinstein (2007) *Preferences, information, and parental choice behavior in public school choice*. Mimeo, Yale University.

Henig, J. (1990) *Choice in public schools: An analysis of transfer requests among magnet schools*, **Social Science Quarterly**, 71(1), 69-82.

Henig, J. (1994) **Rethinking school choice: Limits of the market metaphor**. Princeton: Princeton University Press.

Hsieh, C.-T. and M. Urquiola (2006) *The effects of generalized school choice on achievement and stratification: Evidence from Chile's school voucher program*, **Journal of Public Economics**, 90, 1477-1503.

Jacob, B. (2007) *Test-based accountability and student achievement: An investigation of differential performance on NAEP and state assessments*. NBER Working Paper No. 12817.

Imbens, G. and T. Lemieux (2007) *Regression discontinuity designs: A guide to practice*. NBER Technical Working Paper No. 0337.

Kane, T. and D. Staiger (2002) *The promise and pitfalls of using imprecise school accountability measures*, **Journal of Economic Perspectives**, 16(4), 91-114.

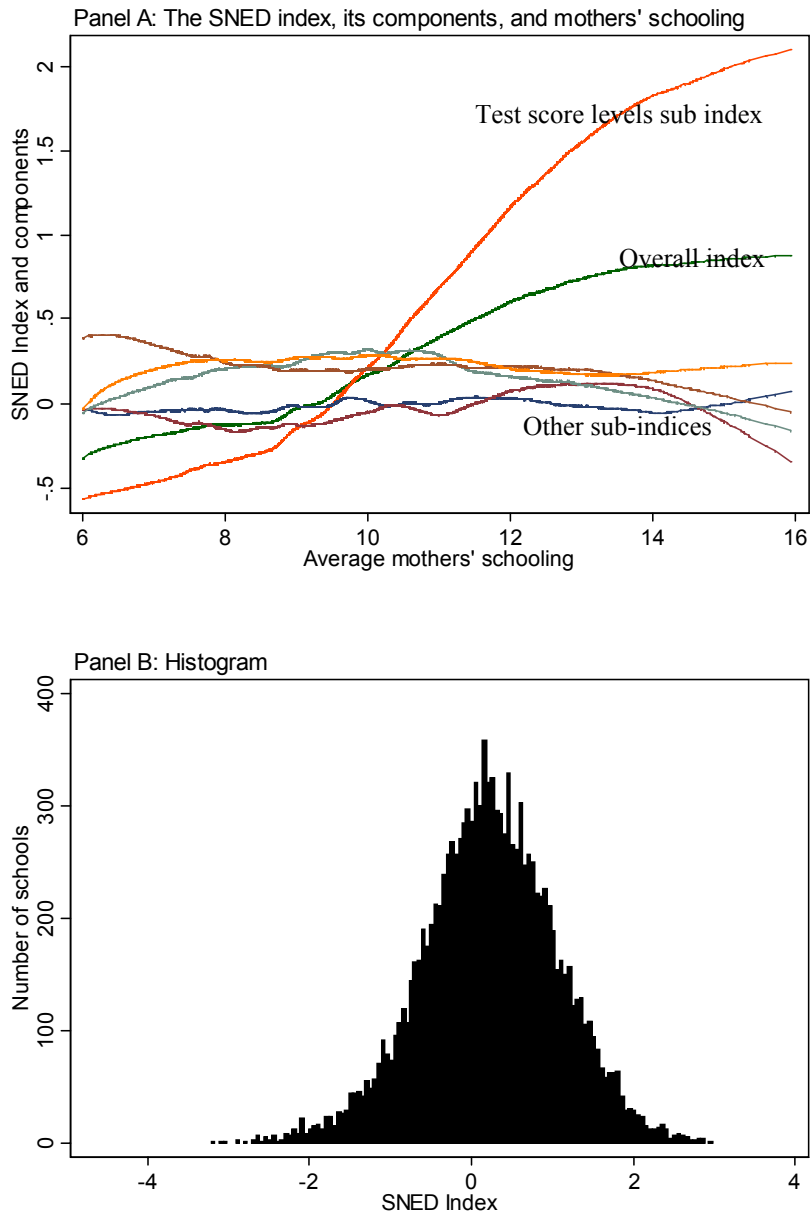
Kleitz, B., G. Weiher, K. Tedin, and R. Matland (2000) *Choice, charter schools, and household preferences*. **Social Science Quarterly**, 81, 846-854.

Lee, D. and D. Card (2006) *Regression discontinuity inference with specification error*. **Journal of Econometrics**, forthcoming.

Levin, H. (2005) *Market behavior and charter schools*. Mimeo, National Center for the Study of Privatization in Education.

- Lubienski, C. (2003) *Innovation in education markets: Theory and evidence on the impact of competition and choice in charter schools*, **American Educational Research Journal**, 40(2), 395-443.
- McCrary, J. (forthcoming) *Manipulation of the running variable in the regression discontinuity design: A density test*. **Journal of Econometrics**.
- Mizala, A., P. Romaguera, and M. Urquiola (2007) *Socioeconomic status or noise? Tradeoffs in the generation of school quality information*, **Journal of Development Economics**, 84, 61-75.
- Mizala, A., and P. Romaguera (2004) *School and teacher performance incentives: The Latin American experience*, **International Journal of Education Development**, 24, 739-754.
- Moe, T. (1995) *Private vouchers*, in Moe, T. (Ed.) **Private vouchers**. Stanford, CA: Hoover Institution Press.
- Neal, D. and D. Whitmore Schanzenbach (2007) *Left behind by design: Proficiency counts and test-based accountability*. Mimeo, University of Chicago.
- Reback, R. (2006) *Teaching to the rating: School accountability and the distribution of student achievement*. Mimeo, Barnard College.
- Rothstein, J. (2006) *Good principals or good peers: Parental valuation of school characteristics, Tiebout equilibrium, and the incentive effects of competition among jurisdictions*, **American Economic Review**, 96(4), pp. 1333-1350.
- Schneider, M. and J. Buckley (2002) *What do parents want from schools? Evidence from the internet*. **Educational Evaluation and Policy Analysis** 24(2), 133-44.
- Urquiola (2005) *Does school choice lead to sorting? Evidence from Tiebout variation*, **American Economic Review**, 95(4), 1310-1326.
- Urquiola, M., and E. Verhoogen, (2006) *Class Size and Sorting in Market Equilibrium: Theory and Evidence*, mimeo, Columbia University.
- van der Klaauw, W. (2002). *Estimating the effect of financial aid offers on college enrollment: A regression-discontinuity approach*. **International Economic Review**, 43(4), 1249- 1287.
- The World Bank (2004) **Making services work for poor people: World Development Report**, Washington, D.C.

Figure 1: The SNED index among primary schools



Note: Panel A plots fitted values of locally weighted regressions of schools' SNED index (and subindex) values on their average mothers' schooling. Panel B plots a histogram of observed SNED index values, using a bin size of 0.05. Both panels cover 12,496 school/year observations from the 1998, 2000, 2002, 2004, and 2006 SNED rounds (this is the 2-year primary sample, see Section IV.D and Table 1, panel B).

Figure 2: Ministry of Education website output, 2007

COMUNIDAD ESCOLAR
Información a tu Alcance

RESULTADOS DEL SISTEMA NACIONAL DE EVALUACION DEL DESEMPEÑO DE LOS ESTABLECIMIENTOS EDUCACIONALES SUBVENCIÓNADOS (SNED 2006-2007)

Usted está en: Resultados SNED 2006-2007 | Detalle por Comuna

[VOLVER AL INICIO DE SUS CONSULTAS](#) [IMPRIMIR AQUÍ](#)

Detalle por Comuna

COLEGIOS DE LA COMUNA
LO PRADO

RBD	NOMBRE DEL ESTABLECIMIENTO	LETRA	Nro.	SELECCIONADO SNED
10140	FRINGS COLLEGE	*	672	SI
10171	ESCUELA VILLA LOURDES	*	1026	SI
10156	ESCUELA BASICA JARDIN LO PRADO	*	1356	SI
11835	ROYAL SCHOOL	*	1261	SI
10147	ESCUELA BASICA BABILONIA	*	1159	SI
10149	RAPA NUI	*	371	NO
10160	BIENVENIDO AUBA UGALDE	*	910	NO
10142	DOCTORA VICTORIA GARCIA	*	611	NO
10103	ESCUELA BASICA SOR TERESA DE LOS ANDES	D	414	NO
10091	ESCUELA BASICA PROFESORA GLADYS VALENZUE	D	403	NO
25744	ESCUELA DE PARVULOS HEYDDIE II	*	1942	NO
25838	ESCUELA DE PARVULOS MY GARDEN SCHOOL	*	1991	NO
25800	ESCUELA DE PARV PARTI ARCA DE NOE DE LO	*	1969	NO
10010	ESCUELA BASICA CIUDAD DE CARACAS	F	293	SI
10097	ESCUELA BASICA MARISCAL DE AYACUCHO	D	409	SI
10119	ESCUELA BASICA POETA VICENTE HUIDOBRO	E	420	SI
10106	ESCUELA BASICA POETA PABLO NERUDA	D	417	SI
10095	ESCUELA BASICA IGNACIO CARRERA PINTO	D	408	NO
10118	ESCUELA BASICA ATATURK	E	419	NO
10092	ESCUELA BASICA GOLDA MEIER	D	404	NO
10089	ESCUELA BASICA JAIME E. GOMEZ GARCIA	D	400	NO
10114	ESCUELA BASICA ESTADOS UNIDOS	E	389	NO
10128	ESCUELA BASICA DE ADULTOS	F	425	NO
10176	ESCUELA BASICA RENACER	*	934	NO
24730	COLEGIO ADVENTISTA SANTIAGO PONIENTE	*	0	NO
10162	TENIENTE DAGOBERTO GODDY N.3	*	0	SI
10076	COMPLEJO EDUCACIONAL PEDRO PRADO	A	66	NO
10127	ESCUELA DIFERENCIAL QUILLAHUA	F	423	SI
25433	ESCUELA ESPECIAL RUCAMALEN	*	1799	NO
25839	ESC ESP PART CENTRO DE ESTUDIOS DEL LENG	*	1988	NO

[VOLVER AL INICIO DE SUS CONSULTAS](#)

Note: The figure shows an image of a Ministry of Education website which allows parents to type in a given commune (*Lo Prado*, in this example). The site returns a listing of all the schools in the commune, including unique administrative identifiers (Column 1), their name (Column 2), and their SNED status (Column 6, which labels selected schools with a “SI” and non-selected schools with a “NO”).

Figure 3a: Pictures of SNED winners in the municipality of *Santiago*, 2006

Panel A: *República de México* school



Panel B: *República de México* school



Panel C: *Instituto Nacional* high school



Panel D: *Barros Arana* boarding school



Panel E: *Barros Borgoño* high school



Note: The figure displays pictures of banners announcing the featured schools' selection in the 2006 SNED round. These banners were posted at winning schools by the government of the Commune of *Santiago*.

Figure 3b: Pictures of SNED winners in the municipality of *Providencia*, 2006

Panel A: *Juan Pablo Duarte* school



Panel B: *Juan Pablo Duarte* school



Panel C: *Tajamar* high school



Panel D: *Lastarria* school



Note: The figure displays pictures of banners announcing the featured schools' selection in the 2006 SNED round. These banners were posted at winning schools by the government of the Commune of *Providencia*.

Figure 4: Newspaper headlines and articles on SIMCE performance, 2000

“La Segunda” te invita al cine a precios rebajados
CUPONES EN PAGINA 46

Segunda

EXCLUSIVO En la Región Metropolitana

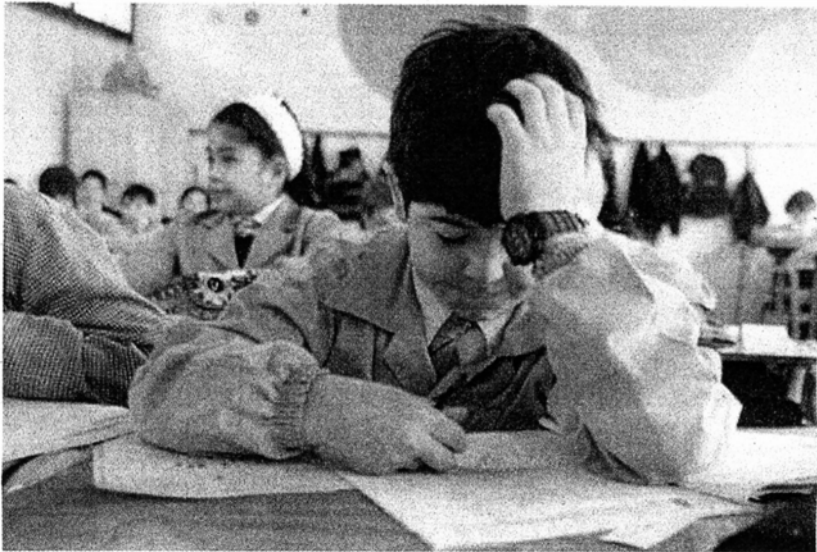
RESULTADOS DEL SIMCE

COLEGIO POR COLEGIO

La Segunda entrega a sus lectores el listado oficial del Ministerio de Educación con los resultados para las comunas de la Región Metropolitana del Sistema de Medición de la Calidad de la Educación aplicado a los alumnos de Octavo Básico el 15 y 16 de

noviembre del 2000. Junto al nombre del establecimiento aparece su dependencia (municipal, subvencionado, particular) la cantidad de alumnos que rindió la prueba y los puntajes obtenidos en Matemática, Castellano, Historia y Ciencias Naturales.

Establecimiento	Dpcia	N° Alum	PUNTAJES PRUEBA 2000			
			MAT	CAST	HIST	C.NAT
ALHUE						
Liceo Municipal Sara Troncoso	MD	67	243	237	253	253
Escuela G 121	MD	12	210	238	241	233
Escuela G 123	MD	8	225	226	250	244
BUIN						
Liceo A 131	MC	297	256	265	253	266
Escuela Rayen Mapu D 807	MC	63	220	226	228	236
Colegio De Mapo E 803	MC	76	224	238	235	251
Escuela Ato Jahuei E 811	MC	103	236	247	231	243
Liceo Los Guindos Polivalente E 814	MC	23	220	216	223	231
Escuela Vilaseca F 802	MC	28	212	207	232	254
Escuela Fco. Javier Kruger A. F 805	MC	56	227	230	230	239
Escuela Valdivia De Paiva F 806	MC	56	239	229	235	240
Escuela Lo Salinas F 809	MC	21	237	252	240	263
Escuela Humberto Monino Ramirez F 810	MC	44	206	216	221	215
Escuela Los Rosales Del Bajo F 816	MC	31	215	222	228	232
Escuela Viluco F 817	MC	36	225	227	231	237
Escuela Andres Puig Ferrer G 808	MC	15	261	256	253	251
Escuela Los Aromos De El Recurso G 813	MC	19	209	216	229	231
Liceo Poliv. Moderno Cardenal Caro	PSC	179	243	251	250	256
Saint Mary College 60	PS	17	224	224	222	236
Colegio Buin	PP	10	277	275	290	289
Colegio San Isidro	PP	35	310	309	320	321
Colegio Particular Saint James School	PP	27	313	311	293	297
CALERA DE TANGO						
Colegio Poetisa Gabriela Mistral 796	MC	62	213	208	228	227
Colegio Calera De Tango F 798	MC	54	218	209	223	213
Escuela Lonquén F 800	MC	35	240	235	241	241
Colegio San Ignacio 8	PS	37	260	267	277	279
Esc. Bas. Part. San Felipe Diacono 92	PP	26	281	281	309	291
CERRILLOS						
Escuela Pedro Aguirre C. D 33	MD	84	220	219	224	212
Escuela Part. Amor De Dios 281	PS	43	250	247	237	252
Liceo Dr. Luis Vargas Salcedo B 69	MD	67	226	226	230	234
Escuela Condones De Plata D 259	MD	58	216	216	217	223
Escuela Lohar Kommer B. D 262	MD	63	207	222	220	216
Escuela D 271	MD	100	219	229	230	226
Escuela Jose J. Prieto V. D 279	MD	111	229	228	237	241
Colegio Estrella Reina de Chile E 267	MD	53	232	223	220	225
Escuela Santa Adela E 269	MD	39	241	246	250	269
Chilean Eagles College 2	PSC	117	241	243	253	249
Colegio Los Conquistadores	PSC	119	269	273	284	260
Colegio Master Del	PSC	70	275	273	269	265
Escuela Industrial y Básica Don Orión	PSC	130	267	271	272	269
Saint Rodric College 943	PS	64	253	262	258	261
Ramé Laurina's 904	PRC	91	246	270	264	278



Establecimiento	Dpcia	N° Alum	PUNTAJES PRUEBA 2000			
			MAT	CAST	HIST	C.NAT
Escuela Bás. Particular Carlos Pezoa Veliz 387	PS	33	217	224	237	231
Escuela Básica Particular N 1095 La Frontera	PSC	42	238	238	223	220
Colegio Polivalente Saint Orión 3	PSC	90	236	241	241	238
Escuela Basica Anexo La Frontera 1095	PSC	40	239	251	229	250
COLINA						
Escuela Bas.Marcos Goycoolea Cortes D 360	MC	95	235	225	227	221
Sta. Teresa Del Carmelo E 367	MC	69	238	238	249	243
Establecimiento						
Colegio Cristobal Colon	PSC	42	257	259	260	267
Liceo Avenida Principal 918	PSC	103	232	229	222	224
Colegio Libertador San Martín	PSC	91	236	240	238	253
Escuela El Carmen 270	PSC	129	257	254	258	249
Colegio Patrocinio El Sembrador #2 1231	PS	26	244	242	244	265
Escuela San Diego 402	PSC	114	275	260	271	270
Heller's College 680	PSC	74	257	260	237	260
Colonia Ines De Suarez 816	PR	57	261	264	263	260

Note: The figure presents an image from *La Segunda*, a national newspaper. The headline reads: “Exclusive in the Metropolitan Region—SIMCE results school by school.” The tables then report, by commune, each school’s name, its type (municipal, voucher private, etc.), its enrollment, and its test scores in Math, Language, History, and Natural Sciences.

Figure 5: Newspaper article on the SNED allocation, calculation, and teacher bonuses

EMOL | El Mercurio | Las Últimas Noticias | La Segunda | Diarios Regionales | Anisios Económicos

Inicio

INFO MERCURIO
INFORMACIÓN A SU ALCANCE
www.infomercurio.com

Cuerpo: Cuerpo C, Nacional
Sección: El País
Página: C03
Diario: El Mercurio

EL MERCURIO
No existe fecha publicación

Usuario: Mizala [Logout]
Impresión Amistosa

**EN COLEGIOS DE SANTIAGO:
DESTACAN SISTEMA PARA EVALUAR EL DESEMPEÑO**

Premio a la Excelencia consulta un bono trimestral por jornadas de 30 y 44 horas de trabajo con promedios de 35 mil y de 55 mil a 64 mil pesos, según la extensión de la labor.

Un grupo de maestros de colegios de la Región Metropolitana recibieron ayer los diplomas que acreditan a esos establecimientos con el Premio a la Excelencia, inserto en el Sistema Nacional de Evaluación de Desempeño (SNED), que distingue cada dos meses la labor de colegios para mejorar su calidad y nivel del quehacer académico.

El Secretario Regional Ministerial de Educación, Antonio Pacheco dijo que la iniciativa se suma a los puntos básicos de la reforma educacional que propicia el Gobierno, especialmente en favor de los sectores de más bajos ingresos.

El SNED integra ahora el premio con incentivos remuneracionales a los profesores de colegios que exhiban el mejor desempeño en todo el país, además de recibir cada establecimiento, a futuro, fondos especiales para sus propios programas educacionales.

Para ello, dijo, el Ministerio de Educación y las secretarías regionales respectivas asignarán a cada plantel un puntaje especial, según la efectividad de sus servicios, su propia superación, nuevas iniciativas, así como integración y participación del magisterio en sus proyectos; todo ello, sobre la base del nivel socioeconómico del colegio y su condición de urbano o rural, entre otros aspectos.

En cuanto a la aplicación del sistema en la Región Metropolitana, cada profesor favorecido por el buen rendimiento de los planteles respectivos ha recibido un bono de excelencia, en forma trimestral, con un promedio de \$ 35.000 a \$ 44.000 por jornada de 30 horas y de \$ 55.000 a \$ 64.000 por jornada de 44 horas.

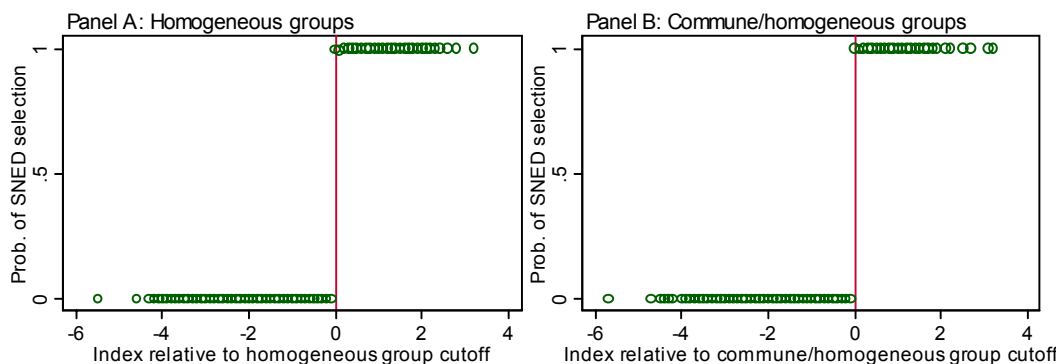
En la oportunidad, el Seremi resaltó que el récord de mayor bono en la región fue el liceo politécnico Sagrado Corazón, de Lo Espejo, en donde un maestro recibió trimestralmente casi 95.000 pesos, logrando 380.000 pesos en total durante el año pasado.

Respecto a las principales condiciones para aplicar el nuevo sistema, el Seremi metropolitano de Educación destacó, entre otras, la capacidad del colegio para incorporar innovaciones educativas y fijar condiciones académicas con mayor participación docente, así como una plena participación de padres y apoderados.

En tal sentido, añadió Pacheco, se ordenará la prelación de los planteles con indicaciones de matrículas de mayor a menor puntaje, para entregarles la

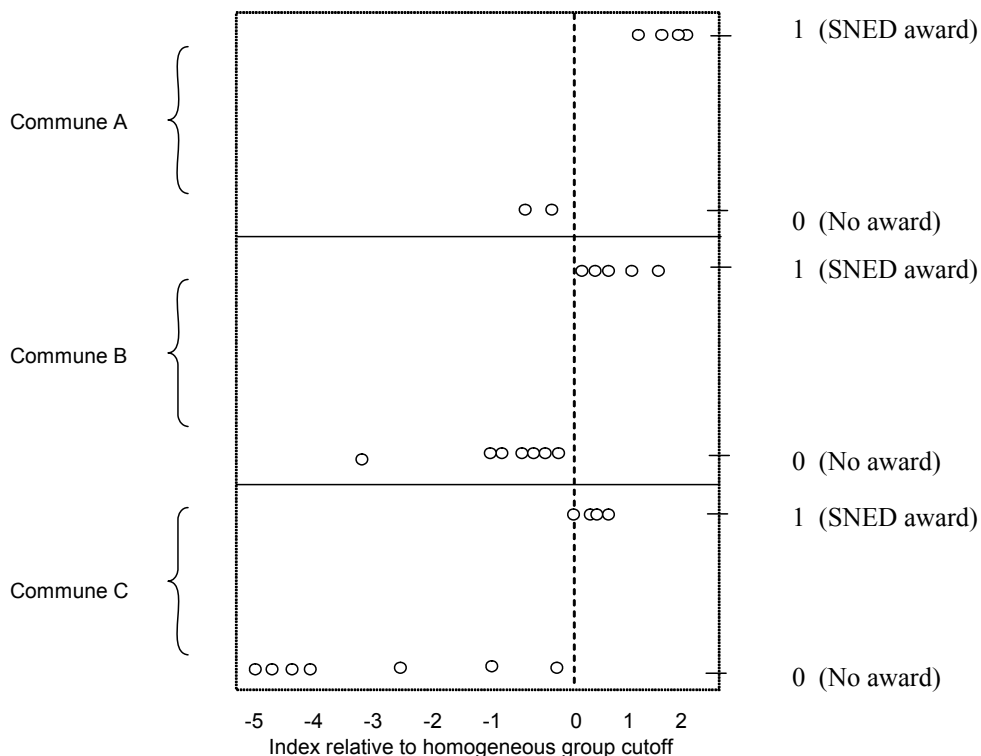
Note: The figure presents an online version of a story in *El Mercurio*, a national newspaper. It describes the implementation of the SNED in the metropolitan region, and notes the fact that teachers can receive non-negligible bonuses as a result of the scheme. It highlights the fact that one specific teacher received an annual bonus of about 600 dollars.

Figure 6: 1st stage



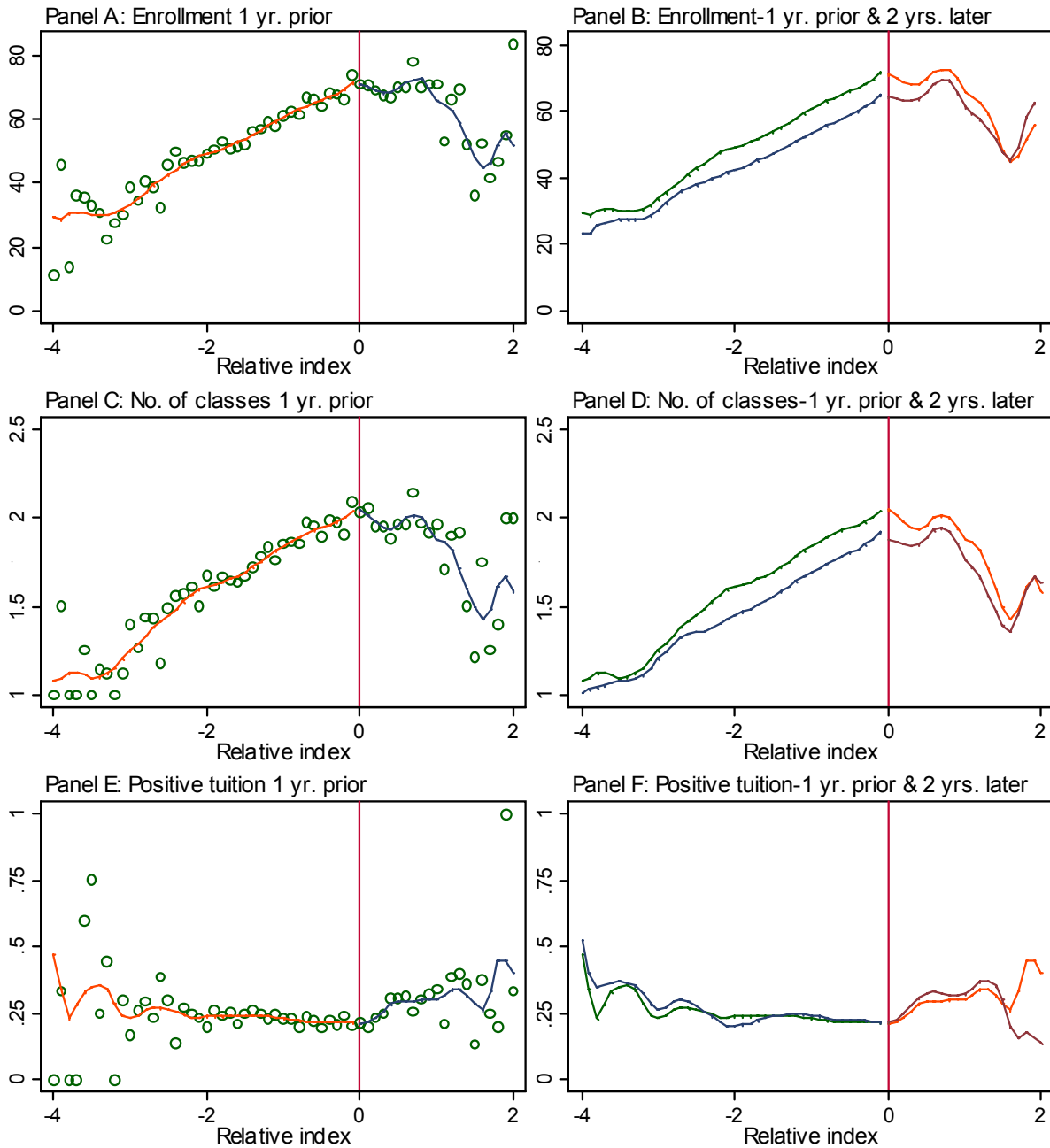
Note: Panel A plots index-cell means of a dummy indicating whether schools obtained a SNED award. Each school's index is expressed relative to the normalized cutoff (the vertical line) in its respective homogeneous group. For visual clarity index values are in 0.1 wide bins (Imbens and Lemieux, 2007). Panel B repeats the exercise where the index is measured relative to commune/homogeneous group cutoffs. Both panels describe the 1998, 2000, 2002, 2004, and 2006 rounds. Panel A is based on 12,496 school/year observations, and panel B on 9,878 observations—the 2-year homogeneous groups and commune/homogeneous group samples, respectively (see Section IV.D and Table 1, Panel B).

Figure 7: Division of a homogenous group into three commune/homogeneous groups



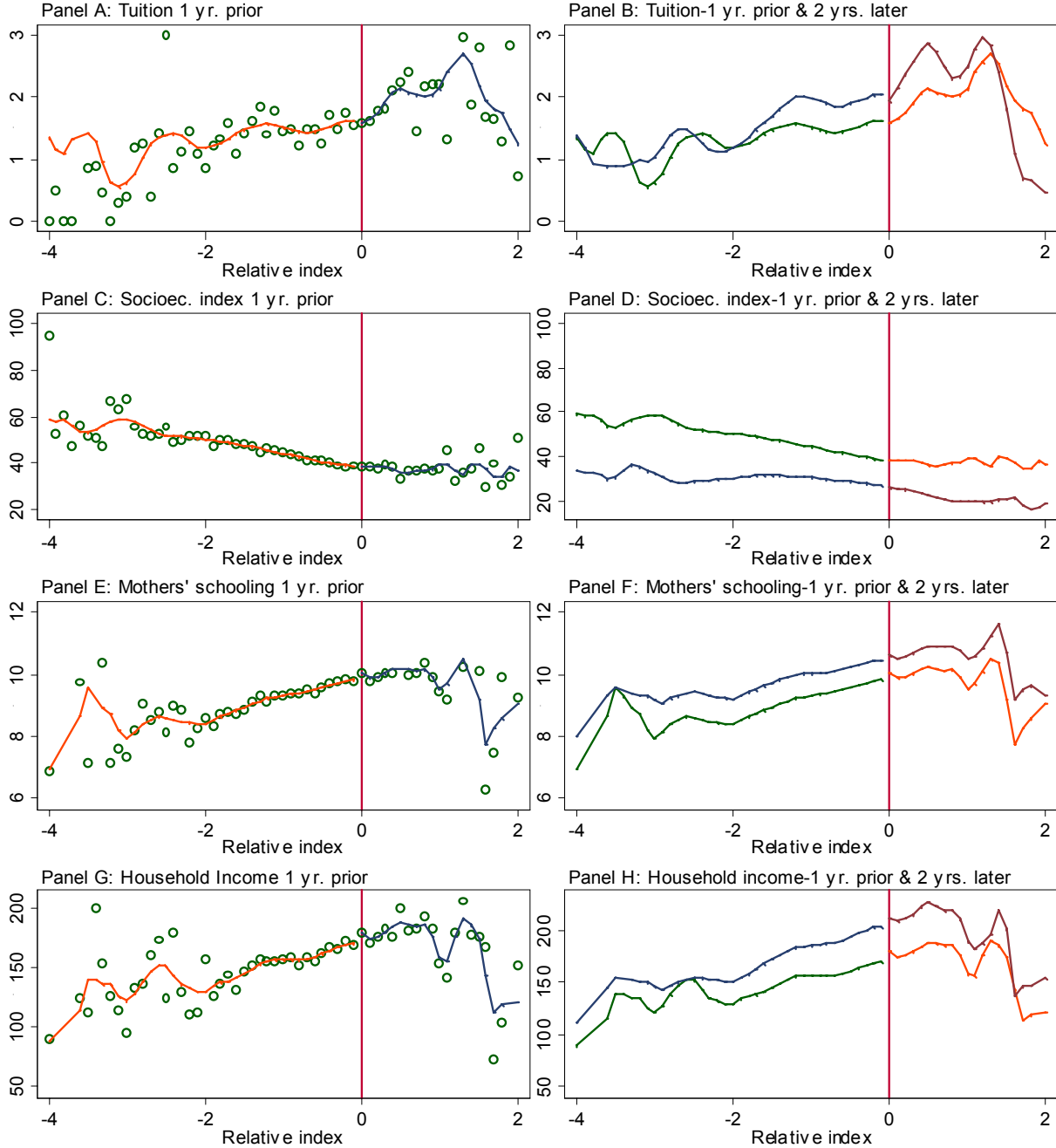
Note: The figure illustrates the construction of commune/homogeneous groups. In this hypothetical case, a homogeneous group contains three communes (communes are fully contained in regions, the basic geographical unit used in the construction of homogeneous groups). The homogenous group-wide cutoff score is common to all three resulting commune/homogeneous groups. For details, see Section IV.C.

Figure 8a: Outcomes at baseline and two years after (2-year primary samples)



Note: The left hand side panels plot index-cell means of schools' outcomes one year prior to each round. Each school's index is expressed relative to the normalized cutoff (the vertical line) in its respective homogeneous group. For clarity, index values are in 0.1 wide bins (see Imbens and Lemieux, 2007). The curves in these panels plot fitted values of locally weighted regressions of schools' outcomes on their relative index values (estimated separately for schools with negative and non-negative values, both with a bandwidth of 0.2). The right hand side panels replicate the fitted values from the left hand side, and add similar plots for outcomes two years after each round. All estimates are for the primary school 2-year homogeneous group (see Section IV.D and Table 1, Panel B).

Figure 8b: Outcomes at baseline and two years after (2-year primary samples)



Note: The left hand side panels plot index-cell means of schools' outcomes one year prior to each round. Each school's index is expressed relative to the normalized cutoff (the vertical line) in its respective homogeneous group. For clarity, index values are in 0.1 wide bins (see Imbens and Lemieux, 2007). The curves in these panels plot fitted values of locally weighted regressions of schools' outcomes on their relative index values (estimated separately for schools with negative and non-negative values, both with a bandwidth of 0.2). The right hand side panels replicate the fitted values from the left hand side, and add similar plots for outcomes two years after each round. All estimates are for the primary school 2-year homogeneous group sample (see Section IV.D and Table 1, Panel B).

Table 1: Homogenous groups, commune/homogenous groups, and sample sizes

Sample and type of group	SNED wave					Stacked data (6)
	1998 (1)	2000 (2)	2002 (3)	2004 (4)	2006 (5)	
Panel A: Full sample						
Homogeneous groups	114	104	109	110	110	--
Total number of schools	9,060	9,247	9,465	9,681	9,681	--
Avg. no. of schools per group	79.5	88.9	86.8	88.0	88.0	--
Commune/homogeneous groups	1,784	1,584	1,669	1,721	1,721	--
Total number of schools	8,355	8,380	8,496	8,536	8,536	--
Avg. no. of schools per group	4.7	5.3	5.1	5.0	5.0	--
Panel B: 2 year sample-Urban primary schools						
Homogeneous groups	34	32	32	31	31	160
Total number of schools	2,422	2,460	2,527	2,484	2,603	12,496
Avg. no. of schools per group	71.2	76.9	79.0	80.1	84.0	78.1
Commune/homogeneous groups	255	206	233	235	267	1,196
Total number of schools	1,892	1,893	2,015	1,964	2,114	9,878
Avg. no. of schools per group	7.4	9.2	8.6	8.4	7.9	8.3
Panel C: 4 year sample-Urban primary schools						
Homogeneous groups	34	32	32	31	--	129
Total number of schools	2,378	2,378	2,461	2,442	--	9,659
Avg. no. of schools per group	69.9	74.3	76.9	78.8	--	74.9
Commune/homogeneous groups	252	202	232	234	--	920
Total number of schools	1,847	1,819	1,959	1,928	--	7,553
Avg. no. of schools per group	7.3	9.0	8.4	8.2	--	8.2
Panel D: 2 year sample-Urban secondary schools						
Homogeneous groups	29	28	28	28	30	143
Total number of schools	1,026	1,081	1,170	1,314	1,687	6,278
Avg. no. of schools per group	35.4	38.6	41.8	46.9	56.2	43.9
Panel E: 4 year sample-Urban secondary schools						
Homogeneous groups	29	28	28	28	--	113
Total number of schools	1,008	1,041	1,153	1,295	--	4,497
Avg. no. of schools per group	34.8	37.2	41.2	46.3	--	39.8

Note: Panel A describes all (primary and secondary) homogenous groups and commune/homogeneous groups in the country. Panel B describes *urban* and *primary* level groups, covering only schools with valid indices for each SNED allocation, and for which there are at least enrollment outcomes one year prior and two years thereafter—we label this the 2-year sample. Panel C describes urban and primary level groups, covering schools with valid indices for each allocation, and for which there are at least enrollment outcomes one year prior and four years thereafter—we label this the 4-year sample. Panels D and E describe analogous 2 and 4-year samples for secondary level schools. See Section IV.D.

Table 2: Inputs and data sources for each of the SNED's six sub-indices

Sub-index	Weight (%)	Measurement / Data source
<i>Effectiveness</i>	37	- SIMCE test score <i>levels</i> in Language and Math, measured at the 4th, 8th, and 10th grade levels, for the latest testing round available
<i>Improvement</i>	28	- SIMCE inter-cohort gains for the 4th, 8th, and 10th grade levels, measured using the two most recently available testing rounds
<i>Equality of opportunity</i>	22	- Repetition and dropout rates (account for 50 percent of the total Equality of Opportunity component); measured using administrative data - Absence of discriminatory practices, such as removing children who fail a grade or become pregnant, or rejecting students when vacancies exist (this accounts for 40 percent of the total Equality of Opportunity component); measured via a questionnaire administered to Ministry of Education inspectors. - Integration of physically challenged students, measured via a school-level survey; absence of improper punishments, measured via a survey administered to Ministry of Education school inspectors; (these account for 10 percent of the total Equality component)
<i>Initiative</i>	6	- Schools' educational activities and initiatives, measured using a survey given to administrators
<i>Parent/teacher participation</i>	5	- Parental participation and information availability; measured via a school-level survey - Parents' perceptions about the quality of the school; measured via a SIMCE survey
<i>Working conditions</i>	2	- Schools' placement in a Ministry of Education inspection system

Source: Authors' preparation and Mizala and Romaguera (2004).

Table 3: Information on schools' dissemination efforts, 2003

How does the school inform parents regarding its:	Type of school	The school does not inform parents (1)	The school informs only if parents request data (2)	The school informs the board of the parents' association (3)	The school informs via notes or other written media sent home (4)	The schools holds information meetings with parents (5)
SNED status	Public	8.3	9.4	36.8	16.7	28.7
	Private voucher	3.9	6.8	35.9	27.0	26.4
SIMCE results	Public	1.0	3.7	27.5	45.6	22.2
	Private voucher	0.2	3.1	26.3	49.3	21.1

Note: The information is based on a survey of schools collected by the Ministry of Education in 2003.

Table 4: Dependent variable—schools average (math and language) test score

	Dep. Var.: 8th grade math score in 2004				Dep. Var.: 10th grade math score in 2003			
	(1)	(2)	(3)	(4)	(5)	(6)	(7)	(8)
SNED winner in 2002	12.39 *** (0.63)	10.32 *** (0.62)	7.22 *** (0.61)	1.50 *** (0.62)	29.96 *** (1.74)	21.69 *** (1.70)	4.35 *** (1.21)	2.65 *** (1.18)
Mothers' schooling in 2002/2001		3.80 *** (0.32)	2.01 *** (0.31)	1.40 *** (0.29)		9.06 *** (0.87)	1.65 *** (0.61)	1.39 *** (0.59)
Household income in 2002/2001		0.03 ** (0.01)	0.03 *** (0.01)	0.02 *** (0.01)		0.03 ** (0.01)	-0.01 (0.01)	-0.01 (0.01)
Math test score in 2002/2001			0.29 *** (0.01)	0.21 *** (0.01)			1.05 *** (0.03)	0.89 *** (0.04)
Math test score in 2000/1998				0.38 *** (0.02)				0.27 *** (0.04)
Homogeneous group dummies	No	No	Yes	Yes	No	No	Yes	Yes
R2	0.435	0.475	0.528	0.584	0.611	0.673	0.860	0.867
N	4,108	4,108	4,108	4,108	1,137	1,137	1,137	1,137

Note: Columns 1-4 refer to primary level information and columns 5-8 to secondary data. The mothers' schooling, income, and previous score controls are for 2002 and 2000 for the primary schools, and 2001 and 1998 for the secondary ones. The controls and test scores for 2002 and 2000 are at the 4th and 8th grade, respectively, and the those for 2001 and 1998 are at the 10th grade level.

Table 5: First stage regressions

	All schools subject to sample selections:			Higher SES groups only	2004 and 2006 rounds ¹
	All	All	Within 0.50 points of the cutoff	Within 0.50 points of the cutoff	Within 0.50 points of the cutoff
	(1)	(2)	(3)	(4)	(5)
Panel A: 2-year sample; Dep. var.: Dummy for receiving an award at baseline					
1 {Index \geq 0}	0.998 *** (0.001)	0.997 *** (0.001)	0.995 *** (0.002)	0.985 *** (0.007)	1.000 *** (0.000)
Quadratic in index	No	Yes	Yes	Yes	Yes
R ²	0.997	0.997	0.996	0.983	1.000
N	12,496	12,496	5,755	1,257	2,571
Panel B: 4-year sample; Dep. var.: Dummy for receiving an award at baseline					
1 {Index \geq 0}	0.997 *** (0.001)	0.996 *** (0.002)	0.994 *** (0.003)	0.981 *** (0.009)	1.000 *** (0.000)
Quadratic in index	No	Yes	Yes	Yes	Yes
R ²	0.997	0.997	0.994	0.979	1.000
N	9,659	9,659	4,508	1,000	1,389
Panel C: 4-year sample; Dep. var.: Dummy for receiving an award 2 years after the baseline					
1 {Index \geq 0}	0.347 *** (0.012)	0.166 *** (0.018)	0.071 ** (0.027)	0.003 (0.057)	0.131 ** (0.049)
Quadratic in index	No	Yes	Yes	Yes	Yes
R ²	0.112	0.138	0.063	0.089	0.173
N	9,659	9,659	4,508	1,000	1,389

Note: The table presents 1st stage regressions based on cutoff scores at the homogeneous group level. The dependent variable indicates whether schools received an award, and the key independent variable indicates if their index was greater than or equal to their respective group's cutoff. Panels A and B-C refer to the 2- and 4-year samples respectively (See Section IV.D and Table 1). ***, **, and * denote significance at the 1, 5, and 10 percent level, respectively.

¹ For the 4-year sample, the table excludes the 2006 SNED wave, since outcomes are not available.

Table 6: 1st grade enrollment

	All schools subject to sample selections:				Higher SES groups only	2004 and 2006 rounds ¹
	All	All	Within 0.5 points of the cutoff	Within 0.5 points of the cutoff	Within 0.5 points of the cutoff	Within 0.5 points of the cutoff
	(1)	(2)	(3)	(4)	(5)	(6)
Panel A: 2-year sample; Dep. var.: Enrollment 1 year prior to allocation						
1 {Index≥0}	7.5 *** (1.2)	-0.8 (1.8)	-0.4 (2.1)		0.9 (4.5)	0.3 (2.7)
Quadratic in index	No	Yes	Yes		Yes	Yes
R ²	0.006	0.027	0.003		0.002	0.003
N	12,496	12,496	5,755		1,257	2,571
Panel B: 2-year sample; Dep. var.: Enrollment 2 years after allocation						
1 {Index≥0}	9.3 *** (1.1)	-0.3 (1.7)	-0.9 (1.9)	-0.2 (0.8)	-0.6 (1.8)	-1.7 (1.1)
Enrollment 1 year prior to allocation				0.83 *** (0.01)	0.86 *** (0.02)	0.85 *** (0.01)
Quadratic in index	No	Yes	Yes	Yes	Yes	Yes
R ²	0.011	0.034	0.004	0.812	0.808	0.820
N	12,496	12,496	5,755	5,755	1,257	2,571
Panel C: 4-year sample; Dep. var.: Enrollment 1 year prior to allocation						
1 {Index≥0}	7.2 *** (1.3)	-0.2 (1.9)	0.2 (2.4)		0.6 (4.9)	2.1 (3.8)
Quadratic in index	No	Yes	Yes		Yes	Yes
R ²	0.005	0.022	0.004		0.006	0.004
N	9,659	9,659	4,508		1,000	1,389
Panel D: 4-year sample; Dep. var.: Enrollment 4 years after allocation						
1 {Index≥0}	9.4 *** (1.2)	0.0 (1.7)	-0.0 (2.1)	-0.2 (1.0)	0.7 (2.5)	0.7 (1.7)
Enrollment 1 year prior to allocation				0.76 *** (0.01)	0.80 *** (0.02)	0.81 *** (0.02)
Quadratic in index	No	Yes	Yes	Yes	Yes	Yes
R ²	0.012	0.034	0.004	0.743	0.757	0.781
N	9,659	9,659	4,508	4,508	1,000	1,389

Note: The table presents regressions of schools' 1st grade enrollment on a dummy for whether their SNED index was greater than or equal to the cutoff score in their respective homogeneous group. Panels A-B and C-D refer to the 2- and 4-year samples, respectively (See Section IV.D and Table 1). ***, **, and * denote significance at the 1, 5, and 10 percent level, respectively.

¹ For the 4-year sample, the table excludes the 2006 SNED wave, since outcomes are not available. In addition, both samples treat the 2007 observations as if they had been taken in 2008—see Section IV.D.

Table 7: Number of 1st grade classes

	All schools subject to sample selections:				Higher SES groups only	2004 and 2006 rounds ¹
	All	All	Within 0.5 points of the cutoff	Within 0.5 points of the cutoff	Within 0.5 points of the cutoff	Within 0.5 points of the cutoff
	(1)	(2)	(3)	(4)	(5)	(6)
Panel A: 2-year sample; Dep. var.: No. of classes 1 year prior to allocation						
1 {Index≥0}	0.11 *** (0.03)	-0.02 (0.04)	0.01 (0.05)		0.06 (0.10)	0.03 (0.06)
Quadratic in index	No	Yes	Yes		Yes	Yes
R ²	0.002	0.017	0.002		0.001	0.002
N	12,077	12,077	5,666		1,246	2,536
Panel B: 2-year sample; Dep. var.: No. of classes 2 years after allocation						
1 {Index≥0}	0.13 *** (0.03)	-0.03 (0.04)	-0.04 (0.05)	-0.05 ** (0.02)	-0.05 (0.05)	-0.08 ** (0.03)
1st grades 1 year prior to allocation				0.79 *** (0.01)	0.85 *** (0.03)	0.79 *** (0.01)
Quadratic in index	No	Yes	Yes	Yes	Yes	Yes
R ²	0.004	0.021	0.002	0.725	0.743	0.707
N	12,077	12,077	5,666	5,666	1,246	2,536
Panel C: 4-year sample; Dep. var.: No. of classes 1 year prior to allocation						
1 {Index≥0}	0.11 *** (0.03)	-0.02 (0.04)	0.02 (0.06)		0.05 (0.11)	0.05 (0.09)
Quadratic in index	No	Yes	Yes		Yes	Yes
R ²	0.001	0.014	0.003		0.004	0.002
N	9,264	9,264	4,413		983	1,371
Panel D: 4-year sample; Dep. var.: No. of classes 4 years after allocation						
1 {Index≥0}	0.14 *** (0.03)	-0.03 (0.04)	-0.03 (0.05)	-0.04 (0.03)	-0.04 (0.07)	-0.03 (0.05)
1st grades 1 year prior to allocation				0.72 *** (0.01)	0.79 *** (0.03)	0.75 *** (0.02)
Quadratic in index	No	Yes	Yes	Yes	Yes	Yes
R ²	0.005	0.020	0.002	0.660	0.689	0.673
N	9,264	9,264	4,413	4,413	983	1,371

Note: The table presents regressions of the number of 1st grades schools operate on a dummy for whether their SNED index was greater than or equal to the cutoff score in their respective homogeneous group. Panels A-B and C-D refer to the 2- and 4-year samples, respectively (See Section IV.D and Table 1). ***, **, and * denote significance at the 1, 5, and 10 percent level, respectively.

¹ For the 4-year sample, the table excludes the 2006 SNED wave, since outcomes are not available. In addition, both samples treat the 2007 observations as if they had been taken in 2008—see Section IV.D.

Table 8: Positive tuition

	All schools subject to sample selections:				Higher SES groups only	2004 and 2006 rounds ¹
	All	All	Within 0.5 points of the cutoff	Within 0.5 points of the cutoff	Within 0.5 points of the cutoff	Within 0.5 points of the cutoff
	(1)	(2)	(3)	(4)	(5)	(6)
Panel A: 2-year sample; Dep. var.: Positive tuition 1 year prior to allocation						
1 {Index≥0}	0.03 ** (0.01)	0.01 (0.02)	-0.02 (0.02)		-0.03 (0.06)	0.03 (0.04)
Quadratic in index	No	Yes	Yes		Yes	Yes
R ²	0.001	0.002	0.003		0.007	0.002
N	9,893	9,893	4,585		1,019	1,401
Panel B: 2-year sample; Dep. var.: Positive tuition 2 years after allocation						
1 {Index≥0}	0.04 *** (0.01)	0.01 (0.02)	-0.02 (0.02)	0.00 (0.01)	0.01 (0.01)	-0.01 (0.01)
Positive tuition 1 year prior to allocation				0.97 *** (0.00)	0.94 *** (0.01)	0.99 *** (0.00)
Quadratic in index	No	Yes	Yes	Yes	Yes	Yes
R ²	0.001	0.003	0.003	0.907	0.884	0.943
N	9,893	9,893	4,585	4,585	1,019	1,401
Panel C: 4-year sample; Dep. var.: Positive tuition 1 year prior to allocation						
1 {Index≥0}	0.04 *** (0.01)	0.01 (0.02)	-0.04 (0.03)		-0.06 (0.07)	--
Quadratic in index	No	Yes	Yes		Yes	--
R ²	0.002	0.004	0.004		0.010	--
N	7,217	7,217	3,119		710	--
Panel D: 4-year sample; Dep. var.: Positive tuition 4 years after allocation						
1 {Index≥0}	0.05 *** (0.01)	0.02 (0.02)	-0.03 (0.03)	0.01 (0.01)	0.01 (0.02)	--
Positive tuition 1 year prior to allocation				0.95 *** (0.01)	0.92 *** (0.02)	--
Quadratic in index	No	Yes	Yes	Yes	Yes	--
R ²	0.003	0.005	0.004	0.868	0.847	--
N	7,217	7,217	3,119	3,119	710	--

Note: The table presents regressions of an indicator for whether schools charge tuition on a dummy for whether their SNED index was greater than or equal to the cutoff score in their respective homogeneous group. Panels A-B and C-D refer to the 2- and 4-year samples, respectively (See Section IV.D and Table 1). ***, **, and * denote significance at the 1, 5, and 10 percent level, respectively.

¹ Because we only have tuition data up to 2006 (inclusive), for the 2-year sample the analysis in Column 6 refers only to the 2004 wave. For the 4-year sample (panels C and D), this specification is not feasible.

Table 9: Tuition

	All schools subject to sample selections:				Higher SES groups only	2004 2006 rounds ¹
	All	All	Within 0.5 points of the cutoff	Within 0.5 points of the cutoff	Within 0.5 points of the cutoff	Within 0.5 points of the cutoff
	(1)	(2)	(3)	(4)	(5)	(6)
Panel A: 2-year sample; Dep. var.: Tuition 1 year prior to allocation						
1 {Index \geq 0}	0.35 *** (0.12)	0.15 (0.14)	-0.17 (0.20)		-0.65 (0.69)	0.09 (0.41)
Quadratic in index	No	Yes	Yes		Yes	Yes
R ²	0.004	0.002	0.002		0.006	0.003
N	9,893	9,893	4,585		1,019	1,401
Panel B: 2-year sample; Dep. var.: Tuition 2 years after allocation						
1 {Index \geq 0}	0.51 *** (0.15)	0.20 (0.18)	-0.25 (0.26)	-0.05 (0.10)	0.09 (0.32)	-0.19 (0.16)
Tuition 1 year prior to allocation				1.19 *** (0.04)	1.17 *** (0.05)	1.35 *** (0.03)
Quadratic in index	No	Yes	Yes	Yes	Yes	Yes
R ²	0.002	0.003	0.002	0.846	0.840	0.927
N	9,893	9,893	4,585	4,585	1,019	1,401
Panel C: 4-year sample; Dep. var.: Tuition 1 year prior to allocation						
1 {Index \geq 0}	0.39 ** (0.13)	0.18 (0.16)	-0.25 (0.23)		-0.68 (0.79)	--
Quadratic in index	No	Yes	Yes		Yes	--
R ²	0.002	0.003	0.003		0.006	--
N	7,217	7,217	3,119		710	--
Panel D: 4-year sample; Dep. var.: Tuition 4 years after allocation						
1 {Index \geq 0}	0.78 *** (0.19)	0.30 (0.23)	-0.39 (0.34)	-0.06 (0.15)	-0.02 (0.46)	--
Tuition 1 year prior to allocation				1.32 *** (0.05)	1.23 *** (0.07)	--
Quadratic in index	No	Yes	Yes	Yes	Yes	--
R ²	0.004	0.006	0.004	0.807	0.798	--
N	7,217	7,217	3,119	3,119	710	--

Note: The table presents regressions of schools' tuition on a dummy for whether their SNED index was greater than or equal to the cutoff score in their respective homogeneous group. Panels A-B and C-D refer to the 2- and 4-year samples, respectively (See Section IV.D and Table 1). ***, **, and * denote significance at the 1, 5, and 10 percent level, respectively.

¹ Because we only have tuition data up to 2006 (inclusive), for the 2-year sample the analysis in Column 6 refers only to the 2004 wave. For the 4-year sample (panels C and D), this specification is not feasible.

Table 10: Vulnerability index measured at the 1st grade

	All schools subject to sample selections:				Higher SES groups only	2004 and 2006 rounds ¹
	All	All	Within 0.5 points of the cutoff	Within 0.5 points of the cutoff	Within 0.5 points of the cutoff	Within 0.5 points of the cutoff
	(1)	(2)	(3)	(4)	(5)	(6)
Panel A: 2-year sample; Dep. var.: Vulnerability index 1 year prior to allocation						
1 {Index \geq 0}	-5.4 *** (0.5)	-0.4 (0.7)	0.2 (1.0)		0.9 (1.6)	-0.5 (1.1)
Quadratic in index	No	Yes	Yes		Yes	Yes
R ²	0.014	0.040	0.004		0.020	0.003
N	10,640	10,640	4,970		760	2,201
Panel B: 2-year sample; Dep. var.: Vulnerability index 2 years after allocation						
1 {Index \geq 0}	-1.5 *** (0.5)	0.5 (0.8)	-0.2 (1.2)	-0.3 (1.1)	-1.4 (2.4)	0.0 (1.8)
Vulnerability 1 year prior to allocation				0.36 *** (0.02)	0.20 *** (0.04)	0.56 *** (0.02)
Quadratic in index	No	Yes	Yes	Yes	Yes	Yes
R ²	0.001	0.015	0.002	0.093	0.020	0.118
N	10,640	10,640	4,970	4,970	760	2,201
Panel C: 4-year sample; Dep. var.: Vulnerability index 1 year prior to allocation						
1 {Index \geq 0}	-5.0 *** (0.6)	0.8 (0.8)	0.1 (1.1)		2.2 (2.0)	-1.1 (1.5)
Quadratic in index	No	Yes	Yes		Yes	Yes
R ²	0.011	0.043	0.002		0.022	0.001
N	7,953	7,953	3,744		531	1,149
Panel D: 4-year sample; Dep. var.: Vulnerability index 4 years after allocation						
1 {Index \geq 0}	-3.6 *** (0.6)	-2.5 (1.0)	-1.8 (1.5)	1.8 (1.5)	-0.8 (3.0)	-1.0 (1.1)
Vulnerability 1 year prior to allocation				0.23 *** (0.02)	0.20 *** (0.04)	0.47 *** (0.02)
Quadratic in index	No	Yes	Yes	Yes	Yes	Yes
R ²	0.005	0.006	0.005	0.038	0.040	0.282
N	7,953	7,953	3,744	3,744	531	1,149

Note: The table presents regressions of schools' vulnerability index values on a dummy for whether their SNED index was greater than or equal to the cutoff score in their respective homogeneous group. Panels A-B and C-D refer to the 2- and 4-year samples, respectively (See Section IV.D and Table 1). ***, **, and * denote significance at the 1, 5, and 10 percent level, respectively.

¹ For the 4-year sample, the table excludes the 2006 SNED wave, since outcomes are not available. In addition, both samples treat the 2007 observations as if they had been taken in 2008—see Section IV.D.

Table 11: Average mothers' schooling

	All schools subject to sample selections:				Higher SES groups only	2004 and 2006 rounds ¹
	All	All	Within 0.5 points of the cutoff	Within 0.5 points of the cutoff	Within 0.5 points of the cutoff	Within 0.5 points of the cutoff
	(1)	(2)	(3)	(4)	(5)	(6)
Panel A: 2-year sample; Dep. var.: Avg. mothers' schooling 1 year prior to allocation						
1 {Index \geq 0}	0.56 *** (0.05)	0.14 ** (0.07)	0.09 (0.10)		-0.23 (0.15)	0.25 (0.17)
Quadratic in index	No	Yes	Yes		Yes	Yes
R ²	0.020	0.046	0.006		0.037	0.008
N	7,102	7,102	3,612		655	1,381
Panel B: 2-year sample; Dep. var.: Avg. mothers' schooling 2 years after allocation						
1 {Index \geq 0}	0.53 *** (0.05)	0.11 (0.08)	0.03 (0.10)	-0.06 (0.05)	-0.16 (0.10)	-0.06 (0.08)
Mothers' sch. 1 year prior to allocation				0.86 *** (0.01)	0.74 *** (0.03)	0.89 *** (0.01)
Quadratic in index	No	Yes	Yes	Yes	Yes	Yes
R ²	0.018	0.039	0.006	0.754	0.524	0.766
N	7,102	7,102	3,612	3,612	655	1,381
Panel C: 4-year sample; Dep. var.: Avg. mothers' schooling 1 year prior to allocation						
1 {Index \geq 0}	0.59 *** (0.06)	0.11 (0.09)	0.02 (0.13)		-0.40 *** (0.20)	--
Quadratic in index	No	Yes	Yes		Yes	--
R ²	0.022	0.047	0.008		0.050	--
N	4,565	4,565	2,190		357	--
Panel D: 4-year sample; Dep. var.: Avg. mothers' schooling 4 years after allocation						
1 {Index \geq 0}	0.59 *** (0.06)	0.10 (0.10)	-0.01 (0.13)	-0.02 (0.07)	-0.04 (0.14)	--
Mothers' sch. 1 year prior to allocation				0.86 *** (0.01)	0.91 *** (0.05)	--
Quadratic in index	No	Yes	Yes	Yes	Yes	--
R ²	0.022	0.044	0.008	0.742	0.641	--
N	4,565	4,565	2,190	2,190	357	--

Note: The table presents regressions of schools' average mothers' schooling on a dummy for whether their SNED index was greater than or equal to the cutoff score in their respective homogeneous group. Panels A-B and C-D refer to the 2- and 4-year samples, respectively (See Section IV.D and Table 1). ***, **, and * denote significance at the 1, 5, and 10 percent level, respectively.

¹ Because we only have mothers' schooling data up to 2006 (inclusive), for the 2-year sample the analysis in Column 6 refers only to the 2004 wave. For the 4-year sample (panels C and D), this specification is not feasible.

Table 12: Household income

	All schools subject to sample selections:				Higher SES groups only	2004 and 2006 rounds ¹
	All	All	Within 0.5 points of the cutoff	Within 0.5 points of the cutoff	Within 0.5 points of the cutoff	Within 0.5 points of the cutoff
	(1)	(2)	(3)	(4)	(5)	(6)
Panel A: 2-year sample; Dep. var.: Avg. hhld. income 1 year prior to allocation						
1 {Index≥0}	19.9 *** (2.8)	10.2 *** (3.7)	8.1 (5.6)		-0.9 (17.8)	14.3 * (8.5)
Quadratic in index	No	Yes	Yes		Yes	Yes
R ²	0.011	0.018	0.004		0.014	0.004
N	7,104	7,104	3,612		655	1,381
Panel B: 2-year sample; Dep. var.: Avg. hhld. income 2 years after allocation						
1 {Index≥0}	25.4 *** (3.4)	10.1 ** (4.4)	5.3 (6.3)	-3.0 (3.1)	-7.6 (9.7)	-8.9 * (4.8)
Hhld. income 1 year prior to allocation				1.02 *** (0.02)	0.94 *** (0.03)	1.09 *** (0.03)
Quadratic in index	No	Yes	Yes	Yes	Yes	Yes
R ²	0.012	0.024	0.004	0.748	0.679	0.765
N	7,104	7,104	3,612	3,612	655	1,381
Panel C: 4-year sample; Dep. var.: Avg. hhld. income 1 year prior to allocation						
1 {Index≥0}	21.9 *** (3.2)	8.6 * (4.8)	5.6 (7.4)		-8.1 (26.5)	--
Quadratic in index	No	Yes	Yes		Yes	--
R ²	0.014	0.021	0.007		0.026	--
N	4,566	4,566	2,190		357	--
Panel D: 4-year sample; Dep. var.: Avg. hhld. income 4 years after allocation						
1 {Index≥0}	28.6 *** (4.2)	10.3 * (6.0)	4.9 (9.1)	-1.3 (4.2)	3.5 (14.6)	--
Hhld. income 1 year prior to allocation				1.10 *** (0.07)	1.06 *** (0.05)	--
Quadratic in index	No	Yes	Yes	Yes	Yes	--
R ²	0.014	0.024	0.006	0.748	0.718	--
N	4,566	4,566	2,190	2,190	357	--

Note: The table presents regressions of schools' average household income on a dummy for whether their SNED index was greater than or equal to the cutoff score in their respective homogeneous group. Panels A-B and C-D refer to the 2- and 4-year samples, respectively (See Section IV.D and the notes to Table 1). ***, **, and * denote significance at the 1, 5, and 10 percent level, respectively.

¹ Because we only have household income data up to 2006 (inclusive), for the 2-year sample the analysis in Column 6 refers only to the 2004 wave. For the 4-year sample (panels C and D), this specification is not feasible.

Table A.1: 1st stage regressions for primary level commune/homogeneous groups and secondary level homogeneous groups

	All schools subject to sample selections:			Higher SES groups only	2004 and 2006 rounds ¹
	All	All	Within 0.50 points of the cutoff	Within 0.50 points of the cutoff	Within 0.50 points of the cutoff
	(1)	(2)	(3)	(5)	(6)
Primary level commune/homogeneous groups					
Panel A: 2-year sample; Dep. var.: Dummy for receiving an award at baseline					
1 {Index \geq 0}	1.000 *** (0.000)	1.000 *** (0.000)	1.000 *** (0.000)	0.999 *** (0.001)	1.000 *** (0.000)
Quadratic in index	No	Yes	Yes	Yes	Yes
R ²	0.999	1.000	0.999	0.996	1.000
N	9,878	9,878	4,116	927	1,858
Panel B: 4-year sample; Dep. var.: Dummy for receiving an award at baseline					
1 {Index \geq 0}	1.000 *** (0.000)	0.999 *** (0.001)	1.000 *** (0.000)	0.999 *** (0.001)	1.000 *** (0.000)
Quadratic in index	No	Yes	Yes	Yes	Yes
R ²	0.999	0.999	0.999	0.995	1.000
N	7,553	7,553	3,198	742	986
Panel C: 4-year sample; Dep. var.: Dummy for receiving an award 2 years after the baseline					
1 {Index \geq 0}	0.352 *** (0.013)	0.237 *** (0.016)	0.128 *** (0.031)	0.115 * (0.062)	0.117 ** (0.053)
Quadratic in index	No	Yes	Yes	Yes	Yes
R ²	0.124	0.141	0.063	0.070	0.174
N	7,553	7,553	3,198	742	986
Secondary level homogeneous groups					
Panel D: 2-year sample; Dep. var.: Dummy for receiving an award at baseline					
1 {Index \geq 0}	0.999 *** (0.001)	0.999 *** (0.001)	0.997 *** (0.003)	0.992 *** (0.008)	1.000 *** (0.000)
Quadratic in index	No	Yes	Yes	Yes	Yes
R ²	0.999	0.999	0.998	0.994	1.000
N	6,278	6,278	2,524	665	1,255
Panel E: 4-year sample; Dep. var.: Dummy for receiving an award at baseline					
1 {Index \geq 0}	0.999 *** (0.001)	0.998 *** (0.002)	0.997 *** (0.003)	0.989 *** (0.011)	1.000 *** (0.000)
Quadratic in index	No	Yes	Yes	Yes	Yes
R ²	0.999	0.999	0.998	0.992	1.000
N	4,497	4,497	1,897	498	652
Panel F: 4-year sample; Dep. var.: Dummy for receiving an award 2 years after the baseline					
1 {Index \geq 0}	0.460 *** (0.017)	0.303 *** (0.026)	0.148 *** (0.042)	0.149 * (0.078)	0.136 * (0.071)
Quadratic in index	No	Yes	Yes	Yes	Yes
R ²	0.200	0.219	0.140	0.108	204.000
N	4,497	4,497	1,897	498	652

Note: The table presents 1st stage regressions for primary level commune/homogeneous groups (panels A-C) and secondary level homogeneous groups (panels D-F). The dependent variable indicates whether schools received a SNED award, and the key independent variable indicates if their index was greater than or equal to their reference groups. ***, **, and * denote significance at the 1, 5, and 10 percent level, respectively.

¹ For the 4-year sample, the table excludes the 2006 SNED wave, since outcomes are not available.

Table A.2: 1st grade enrollment among commune/homogeneous groups

	All schools subject to sample selections:				Higher SES groups only	2004 and 2006 rounds ¹
	All	All	Within 0.5 points of the cutoff	Within 0.5 points of the cutoff	Within 0.5 points of the cutoff	Within 0.5 points of the cutoff
	(1)	(2)	(3)	(4)	(5)	(6)
Panel A: 2-year sample; Dep. var.: Enrollment 1 year prior to allocation						
1 {Index≥0}	8.5 *** (1.3)	-0.9 (2.0)	-3.1 (2.6)		1.7 (5.1)	-5.9 * (3.2)
Quadratic in index	No	Yes	Yes		Yes	Yes
R ²	0.008	0.026	0.002		0.001	0.005
N	9,878	9,878	4,116		927	1,858
Panel B: 2-year sample; Dep. var.: Enrollment 2 years after allocation						
1 {Index≥0}	10.2 *** (1.2)	-0.3 (1.9)	-2.4 (2.4)	0.2 (0.9)	-1.7 (2.1)	0.0 (1.3)
Enrollment 1 year prior to allocation				0.86 *** (0.01)	0.89 *** (0.03)	0.87 *** (0.01)
Quadratic in index	No	Yes	Yes	Yes	Yes	Yes
R ²	0.014	0.034	0.003	0.825	0.806	0.838
N	9,878	9,878	4,116	4,116	927	1,858
Panel C: 4-year sample; Dep. var.: Enrollment 1 year prior to allocation						
1 {Index≥0}	8.0 *** (1.4)	-0.4 (2.1)	-3.1 (2.9)		-0.7 (5.6)	8.2 * (4.4)
Quadratic in index	No	Yes	Yes		Yes	Yes
R ²	0.007	0.021	0.003		0.002	0.009
N	7,553	7,553	3,198		742	986
Panel D: 4-year sample; Dep. var.: Enrollment 4 years after allocation						
1 {Index≥0}	10.3 *** (1.3)	-0.4 (2.0)	-2.7 (2.6)	-0.2 (1.2)	-3.5 (2.7)	1.4 (2.0)
Enrollment 1 year prior to allocation				0.79 *** (0.01)	0.82 *** (0.03)	0.83 *** (0.02)
Quadratic in index	No	Yes	Yes	Yes	Yes	Yes
R ²	0.015	0.036	0.005	0.769	0.760	0.803
N	7,553	7,553	3,198	3,198	742	986

Note: The table presents regressions of schools' 1st grade enrollment on a dummy for whether their SNED index was greater than or equal to the cutoff score in their respective commune/homogeneous group. Panels A-B and C-D refer to the 2- and 4-year samples, respectively (See Section IV.D and Table 1). ***, **, and * denote significance at the 1, 5, and 10 percent level, respectively.

¹ For the 4-year sample, the table excludes the 2006 SNED wave, since outcomes are not available. In addition, both samples treat the 2007 observations as if they had been taken in 2008—see Section IV.D.

Table A.3: Positive tuition among commune/homogeneous groups

	All schools subject to sample selections:				Higher SES groups only	2004 and 2006 rounds ¹
	All	All	Within 0.5 points of the cutoff	Within 0.5 points of the cutoff	Within 0.5 points of the cutoff	Within 0.5 points of the cutoff
	(1)	(2)	(3)	(4)	(5)	(6)
Panel A: 2-year sample; Dep. var.: Positive tuition 1 year prior to allocation						
1 {Index \geq 0}	0.03 ** (0.01)	0.02 (0.02)	-0.00 (0.03)		0.05 (0.07)	0.00 (0.05)
Quadratic in index	No	Yes	Yes		Yes	Yes
R ²	0.001	0.002	0.004		0.008	0.003
N	7,764	7,764	3,252		750	994
Panel B: 2-year sample; Dep. var.: Positive tuition 2 years after allocation						
1 {Index \geq 0}	0.03 *** (0.01)	0.03 (0.02)	0.00 (0.03)	0.00 (0.01)	0.03 * (0.01)	0.00 (0.02)
Positive tuition 1 year prior to allocation				0.97 *** (0.00)	0.95 *** (0.01)	0.98 *** (0.01)
Quadratic in index	No	Yes	Yes	Yes	Yes	Yes
R ²	0.001	0.002	0.005	0.913	0.913	0.940
N	7,764	7,764	3,252	3,252	750	994
Panel C: 4-year sample; Dep. var.: Positive tuition 1 year prior to allocation						
1 {Index \geq 0}	0.04 *** (0.02)	0.01 (0.02)	0.00 (0.03)		0.03 (0.08)	--
Quadratic in index	No	Yes	Yes		Yes	--
R ²	0.002	0.002	0.005		0.125	--
N	5,625	5,625	2,212		524	--
Panel D: 4-year sample; Dep. var.: Positive tuition 4 years after allocation						
1 {Index \geq 0}	0.05 *** (0.02)	0.05 ** (0.02)	0.02 (0.03)	0.02 (0.01)	0.06 (0.02)	--
Positive tuition 1 year prior to allocation				0.96 *** (0.01)	0.94 *** (0.02)	--
Quadratic in index	No	Yes	Yes	Yes	Yes	--
R ²	0.003	0.003	0.006	0.882	0.893	--
N	5,625	5,625	2,212	2,212	524	--

Note: The table presents regressions of an indicator for whether schools charge tuition on a dummy for whether their SNED index was greater than or equal to the cutoff score in their respective commune/homogeneous group. Panels A-B and C-D refer to the 2- and 4-year samples, respectively (See Section IV.D and Table 1). ***, **, and * denote significance at the 1, 5, and 10 percent level, respectively.

¹ Because we only have tuition data up to 2006 (inclusive), for the 2-year sample the analysis in Column 6 refers only to the 2004 wave. For the 4-year sample (panels C and D), this specification is not feasible.

Table A.4: Vulnerability (at the 1st grade) among commune/homogeneous groups

	All schools subject to sample selections:				Higher SES groups only	2004 and 2006 rounds ¹
	All	All	Within 0.5 points of the cutoff	Within 0.5 points of the cutoff	Within 0.5 points of the cutoff	Within 0.5 points of the cutoff
	(1)	(2)	(3)	(4)	(5)	(6)
Panel A: 2-year sample; Dep. var.: Vulnerability index 1 year prior to allocation						
1 {Index≥0}	-5.3 *** (0.6)	0.6 (0.9)	4.2 (1.1)		1.3 (1.6)	3.0 ** (1.4)
Quadratic in index	No	Yes	Yes		Yes	Yes
R ²	0.015	0.043	0.008		0.016	0.013
N	8,333	8,333	3,539		567	1,580
Panel B: 2-year sample; Dep. var.: Vulnerability index 2 years after allocation						
1 {Index≥0}	-2.0 *** (0.6)	0.8 (0.9)	2.4 * (1.3)	0.8 (1.3)	0.9 (2.6)	3.6 * (2.1)
Vulnerability 1 year prior to allocation				0.38 *** (0.02)	0.16 *** (0.05)	0.56 *** (0.03)
Quadratic in index	No	Yes	Yes	Yes	Yes	Yes
R ²	0.002	0.015	0.001	0.098	0.011	0.120
N	8,333	8,333	3,539	3,539	567	1,580
Panel C: 4-year sample; Dep. var.: Vulnerability index 1 year prior to allocation						
1 {Index≥0}	-4.9 *** (0.6)	1.7 * (1.0)	0.1 (1.1)		1.0 (1.9)	3.8 ** (1.7)
Quadratic in index	No	Yes	Yes		Yes	Yes
R ²	0.012	0.047	0.002		0.007	0.011
N	6,145	6,145	2,638		392	808
Panel D: 4-year sample; Dep. var.: Vulnerability index 4 years after allocation						
1 {Index≥0}	-4.1 *** (0.7)	-5.0 *** (1.1)	-3.1 * (1.8)	-4.3 *** (1.7)	-4.6 (3.8)	-2.7 (1.2)
Vulnerability 1 year prior to allocation				0.27 *** (0.02)	0.27 *** (0.07)	0.49 *** (0.03)
Quadratic in index	No	Yes	Yes	Yes	Yes	Yes
R ²	0.006	0.007	0.014	0.058	0.050	0.310
N	6,145	6,145	2,638	2,638	392	808

Note: The table presents regressions of schools' vulnerability index values on a dummy for whether their SNED index was greater than or equal to the cutoff score in their respective commune/homogeneous group. Panels A-B and C-D refer to the 2- and 4-year samples, respectively (See Section IV.D and Table 1). ***, **, and * denote significance at the 1, 5, and 10 percent level, respectively.

¹ For the 4-year sample, the table excludes the 2006 SNED wave, since outcomes are not available. In addition, both samples treat the 2007 observations as if they had been taken in 2008—see Section IV.D.

Table A.5: 9th grade enrollment among secondary schools

	All schools subject to sample selections:				Higher SES groups only	2004 and 2006 rounds ¹
	All	All	Within 0.5 points of the cutoff	Within 0.5 points of the cutoff	Within 0.5 points of the cutoff	Within 0.5 points of the cutoff
	(1)	(2)	(3)	(4)	(5)	(6)
Panel A: 2-year sample; Dep. var.: Enrollment 1 year prior to allocation						
1 {Index≥0}	-31.1 *** (5.9)	-28.7 *** (6.4)	-12.7 (10.1)		7.2 (11.8)	-19.7 (13.0)
Quadratic in index	No	Yes	Yes		Yes	Yes
R ²	0.009	0.009	0.010		0.002	0.016
N	6,278	6,278	2,524		665	1,255
Panel B: 2-year sample; Dep. var.: Enrollment 2 years after allocation						
1 {Index≥0}	-25.2 *** (5.7)	-29.1 *** (6.6)	-10.8 (10.0)	1.2 (3.2)	-3.2 (3.9)	4.6 (3.9)
Enrollment 1 year prior to allocation				0.95 *** (0.02)	0.96 *** (0.03)	0.91 *** (0.02)
Quadratic in index	No	Yes	Yes	Yes	Yes	Yes
R ²	0.006	0.007	0.010	0.875	0.918	0.902
N	6,278	6,278	2,524	2,524	665	1,255
Panel C: 4-year sample; Dep. var.: Enrollment 1 year prior to allocation						
1 {Index≥0}	-37.2 *** (6.8)	-24.7 *** (7.7)	-9.5 (12.1)		-1.8 (13.4)	-15.9 (19.8)
Quadratic in index	No	Yes	Yes		Yes	Yes
R ²	0.011	0.013	0.013		0.001	0.037
N	4,497	4,497	1,897		498	652
Panel D: 4-year sample; Dep. var.: Enrollment 4 years after allocation						
1 {Index≥0}	-30.9 *** (6.6)	-18.8 ** (7.9)	-7.6 (11.7)	1.0 (4.0)	-3.2 (5.0)	-0.6 (5.6)
Enrollment 1 year prior to allocation				0.91 *** (0.02)	0.97 *** (0.03)	0.86 *** (0.03)
Quadratic in index	No	Yes	Yes	Yes	Yes	Yes
R ²	0.009	0.011	0.010	0.847	0.888	0.870
N	4,497	4,497	1,897	1,897	498	652

Note: The table presents regressions of schools' 9th grade enrollment on a dummy for whether their SNED index was greater than or equal to the cutoff score in their respective homogeneous group. Panels A-B and C-D refer to the 2- and 4-year samples, respectively (See Section IV.D and Table 1). ***, **, and * denote significance at the 1, 5, and 10 percent level, respectively.

¹ For the 4-year sample, the table excludes the 2006 SNED wave, since outcomes are not available. In addition, both samples treat the 2007 observations as if they had been taken in 2008—see Section IV.D.

Table A.6: Positive tuition at the secondary level

	All schools subject to sample selections:				Higher SES groups only	2004 and 2006 rounds ¹
	All	All	Within 0.5 points of the cutoff	Within 0.5 points of the cutoff	Within 0.5 points of the cutoff	Within 0.5 points of the cutoff
	(1)	(2)	(3)	(4)	(5)	(6)
Panel A: 2-year sample; Dep. var.: Positive tuition 1 year prior to allocation						
1 {Index \geq 0}	0.12 *** (0.02)	0.09 *** (0.03)	0.08 (0.04)		-0.02 (0.06)	0.15 ** (0.07)
Quadratic in index	No	Yes	Yes		Yes	Yes
R ²	0.011	0.012	0.008		0.000	0.010
N	4,591	4,591	1,928		502	659
Panel B: 2-year sample; Dep. var.: Positive tuition 2 years after allocation						
1 {Index \geq 0}	0.12 *** (0.02)	0.08 (0.03)	0.10 ** (0.04)	0.03 (0.02)	0.01 (0.03)	0.01 (0.01)
Positive tuition 1 year prior to allocation				0.91 *** (0.01)	0.73 *** (0.06)	0.96 *** (0.01)
Quadratic in index	No	Yes	Yes	Yes	Yes	Yes
R ²	0.010	0.012	0.008	0.835	0.671	0.932
N	4,591	4,591	1,928	1,928	502	659
Panel C: 4-year sample; Dep. var.: Positive tuition 1 year prior to allocation						
1 {Index \geq 0}	0.14 *** (0.03)	0.09 (0.03)	0.05 (0.05)		-0.06 (0.08)	--
Quadratic in index	No	Yes	Yes		Yes	--
R ²	0.014	0.015	0.010		0.003	--
N	3,202	3,202	1,245		323	--
Panel D: 4-year sample; Dep. var.: Positive tuition 4 years after allocation						
1 {Index \geq 0}	0.13 *** (0.03)	0.08 (0.03)	0.07 (0.05)	0.02 (0.02)	-0.04 (0.05)	--
Positive tuition 1 year prior to allocation				0.87 *** (0.02)	0.66 *** (0.07)	--
Quadratic in index	No	Yes	Yes	Yes	Yes	--
R ²	0.012	0.013	0.008	0.765	0.600	--
N	3,202	3,202	1,245	1,245	323	--

Note: The table presents regressions of an indicator for whether schools charge tuition on a dummy for whether their SNED index was greater than or equal to the cutoff score in their respective homogeneous group. Panels A-B and C-D refer to the 2- and 4-year samples, respectively (See Section IV.D Table 1). ***, **, and * denote significance at the 1, 5, and 10 percent level, respectively.

¹ Because we only have tuition data up to 2006 (inclusive), for the 2-year sample the analysis in Column 6 refers only to the 2004 wave. For the 4-year sample (panels C and D), this analysis is not feasible.

Table A.7: Vulnerability at the secondary level

	All schools subject to sample selections:				Higher SES groups only	2004 and 2006 rounds ¹
	All	All	Within 0.5 points of the cutoff	Within 0.5 points of the cutoff	Within 0.5 points of the cutoff	Within 0.5 points of the cutoff
	(1)	(2)	(3)	(4)	(5)	(6)
Panel A: 2-year sample; Dep. var.: Vulnerability index 1 year prior to allocation						
1 {Index≥0}	-8.3 *** (0.9)	-6.8 *** (1.3)	-3.6 * (1.9)		-4.3 (4.3)	1.0 (2.1)
Quadratic in index	No	Yes	Yes		Yes	Yes
R ²	0.031	0.032	0.030		0.064	0.061
N	4,145	4,145	1,617		216	724
Panel B: 2-year sample; Dep. var.: Vulnerability index 2 years after allocation						
1 {Index≥0}	-4.2 *** (0.9)	-0.1 *** (1.4)	-0.6 (2.1)	0.6 (2.0)	-6.6 (5.0)	2.6 (3.0)
Vulnerability 1 year prior to allocation				0.32 *** (0.03)	0.08 (0.08)	0.41 *** (0.04)
Quadratic in index	No	Yes	Yes	Yes	Yes	Yes
R ²	0.006	0.015	0.003	0.087	0.020	0.089
N	4,145	4,145	1,617	1,617	216	724
Panel C: 4-year sample; Dep. var.: Vulnerability index 1 year prior to allocation						
1 {Index≥0}	-5.8 *** (1.0)	-5.9 *** (1.5)	-3.5 (2.3)		-6.8 (6.6)	3.2 (3.1)
Quadratic in index	No	Yes	Yes		Yes	Yes
R ²	0.015	0.015	0.017		0.120	0.040
N	2,614	2,614	1,050		100	303
Panel D: 4-year sample; Dep. var.: Vulnerability index 4 years after allocation						
1 {Index≥0}	-5.4 *** (1.1)	-7.6 *** (1.8)	-3.2 (2.8)	-2.3 (2.7)	-8.3 (7.0)	-2.4 (2.2)
Vulnerability 1 year prior to allocation				0.25 *** (0.04)	0.29 ** (0.11)	0.47 *** (0.04)
Quadratic in index	No	Yes	Yes	Yes	Yes	Yes
R ²	0.009	0.028	0.023	0.066	0.139	0.040
N	2,614	2,614	1,050	1,050	100	303

Note: The table presents regressions of schools' vulnerability index values (measured at the secondary level) on a dummy for whether their SNED index was greater than or equal to the cutoff score in their respective homogeneous group. Panels A-B and C-D refer to the 2- and 4-year samples, respectively (See Section IV.D and Table 1). ***, **, and * denote significance at the 1, 5, and 10 percent level, respectively.

¹ For the 4-year sample, the table excludes the 2006 SNED wave, since outcomes are not available. In addition, both samples treat the 2007 observations as if they had been taken in 2008—see Section IV.D.